

# User Manual

## OG-GSM

### 1 、 Introduction

### 2 、 phone introducing

### 3 、 How to use the phone

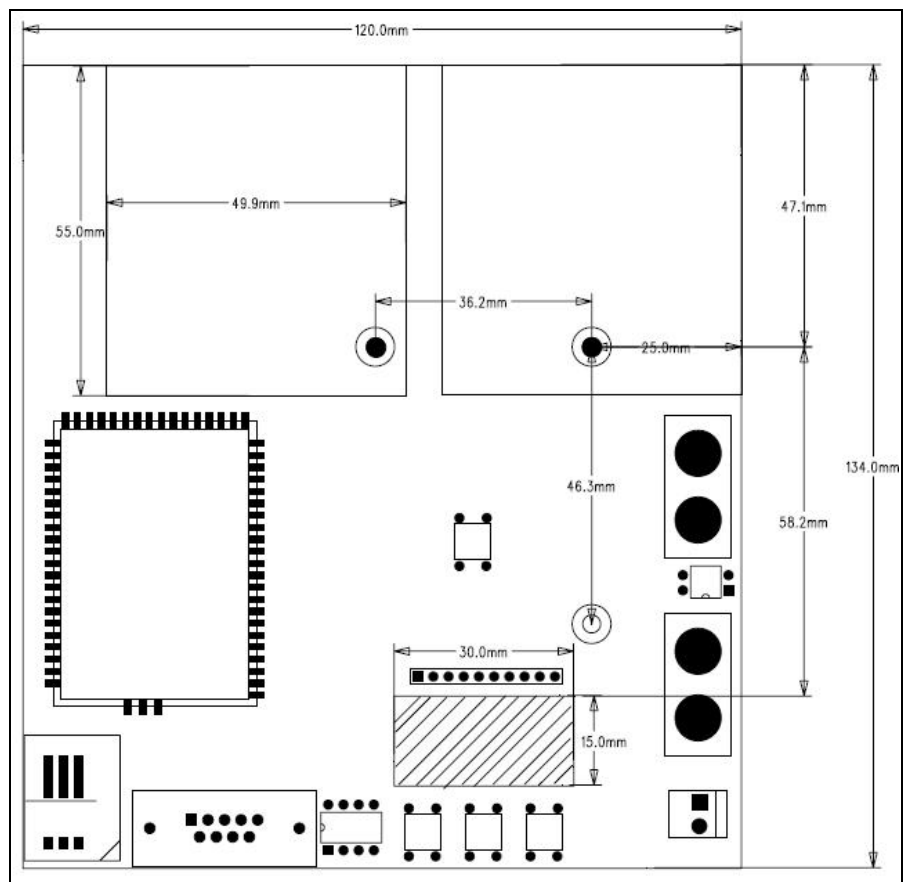
### 4 、 The phone feature set introduced

### 1 、 Introduction

In order to provide GSM wireless emergency telephone call to provide GSM call program control board to support the button dialing, handset state, recording, playback, echo cancellation technology, hands-on add-free version, built-in antenna, external antenna connector, the phone handset interface To support the toner-type and active type of microphone, programmable software updates. You can use solar battery, Lithium Battery And 12V-24V DC adapter

## 2 the motherboard description

### 2.1 Appearance



### 2.2 Terminal Description

1. SIM Card
2. RS-232 9PIN
3. 6x1 DIP switches
4. play button
5. erase button
6. external play button
7. key pay wire terminal
8. handset
9. handset terminal
10. Carbon Type / electronic selector switch terminals
11. Reset button
12. power board connector
13. Antenna terminal

## 2.3 Install

1. Install SIM Card SIM card must be installed after the pin code disable
2. Install the lithium battery to 3.7V version of the battery into the power socket
3. Installation of DC transformers, attention must be voltage above 12V-24V 1A adapter joints on the +, - cable into and then tighten the screws
4. Note to install solar battery voltage 6V-12V, the solar electric wire connector on the +, - insert and then tighten the screws
5. Grounding line, the machine must be grounded for safety, the ground of the cable into the ground position, insert the screws will tighten

## 3 functions

### 3.1 Memory dial

- ◆ Direct dial 10 groups
- ◆ Memory dialing 10 groups
- ◆ No. 10 group can be allocated
- ◆ A code switching and memory B code switch to 10 groups (when the received code system into B A code allocated)

### 3.2 Record / playback function

- ◆ Recording
- ◆ Playback
- ◆ Automatic playback
- ◆ Delete

### 3.3 Call function

- ◆ Set aside
- ◆ Answer
- ◆ Direct Dial
- ◆ Memory dial
- ◆ Dial-up adapter
- ◆ Call playback

### 3.4 Setup

- ◆ Memory number set
- ◆ Password Settings

## 4 How to use

### 4.1 Recording into the setting mode (Slide off the s1.4 type your password "1968")

- ◆ Clear recording press the delete key, etc. Erase 7-8 seconds after the completion of the recording removed Erase
- ◆ Recording press the record button recording through the microphone most 120 seconds
- ◆ Stop recording

### 4.2 Playback

- ◆ Start playback **play** key
- ◆ To stop playback during playback press the **Play** button
- ◆ Slide the S1.2 playback automatically when a call is automatically **on** playback

### 4.3 Call out

- ◆ A Lifting the handset, and you hear a dial tone Enter the phone number to be allocated. Press "#" key to make a call, if you do not press "#" key, the phone will automatically dial, after 6 seconds later automatically allocated.
- ◆ Hang up call after putting down the telephone.
- ◆ Pick up Calls
  - ◆ Hear the phone ring state, can pick up the handset to answer call
- ◆ Direct Dial (10 groups) by lifting the handset and you hear a dial tone. Press "#" key to make a call.
- ◆ Memory dialing 10 groups, lifting the handset, hears dial tone. Enter \* 0 -\* 9. "#" Key to make a call.
- ◆ Can allocate number (10 groups) by lifting the handset, and can hear the dial tone. Enter the phone number to be allocated. Press "#" key to make a call.
- ◆ A code of 10 group B code switch, lifting the handset, hears dial tone. Enter the phone number to be

allocated. Press "#" key to make a call. B

## 5 Setup

### 5.1 Start the setup process for the first time

- Toggle off the motherboard SW4.1 location
- Will bring the handset (must be linked to the handset from the handset to mention), issued after the handset beep tone (turn off the handset into the program to set the power)
- Enter the user password (default setting is "9999")
- To enter set mode to issue beep TWO
- Input error given busy tone, the handset must be linked back to

### 5.2 定 After the start the start the second set-up process

- The board of the SW4 (reference motherboard location map) Slide off position
- Will bring the handset (must be linked to the handset from the handset to mention), 1 second after the handset issue beep tone (enter program settings, turn off the handset power)
- Enter the user password such as 1234
- To enter set mode to issue beep beep TWO
- Input error given busy tone, the handset must be linked back to

### 5.3 Change Password ("0 \* 0 \*")

- Enter the Change Password command string "0 \*"
- Enter the update command "0 \*"
- Then enter the new 4 password "xxxx"
- Input end of the code "#"
- Beep beep's continued success to issue other settings
- Input error given busy tone, the handset must be linked back to

Example: If you want to change the password to "1234", enter "0 \* 0 \* 1234 #"

### 5.4 Remove the password back to factory setting 9999 ("0 \*\*\*")

- Enter the Change Password command string "0 \*"
- Enter to delete the string "\*\*\*"
- Enter the string end of the code "#"
- Beep beep's continued success to issue other settings
- Input error given busy tone, the handset must be linked back to

Example: If you want to remove the password, enter "0 \*\*\*#", back to factory settings

### 5.7 ("1 \* N \*")

- Enter the Change Password command string "1 \*"
- Enter group "N \*" (N is 0-9)
- Then enter the phone number "nnnnnnnnnnnnnnnnnnnn"
- Enter the string end of the code "#"
- Beep beep's continued success to issue other settings
- Input error given busy tone, the handset must be linked back to

Example: If you want to dial, then enter code ("18884663669")

Direct Input 1 \* 0 \* 18884663669 #

#### 5.7 Remove direct dial setting ("1 \*\*\*)

- Remove the automatic dialing direct dial input command ("1 \*")
- Enter delete command code "\*\*\*"
- Enter completion code "#"
- Beep beep's continued success to issue other settings
- Input error given **busy tone**, the handset must be linked back to

Plus if you want to remove direct dial memory dial settings directly into a \*\*\* #

Direct dial memory is cleared

#### 5.7 Can set aside a number of settings (Group 10) (2 \* N \*)

- Enter order number can be set aside 2 \*
- Enter group "N \*" (N is 0-9)
- Enter the phone number can be set aside "nnnnnnnnnnnnnnnnnn"
- Enter completion code "#"
- Beep beep's continued success to issue other settings
- Input error given **busy tone**, the handset must be linked back to

Examples of these groups you want to enter the number of 911,411,958, 611, 958, 18,002,425,855 to be allocated

Input 2 \* 1 \* 911 # number of the first group can be allocated

Input 2 \* 2 \* 411 #

Input 2 \* 4 \* 958 #

Input 2 \* 5 \* 18002425885 #

Input 2 \* 6 \* NNNNNNNN #

Input 2 \* 6 \* xxxxx #

Input 2 \* 7 \* xxxx #

Input 2 \* 8 \* xxxxx #

Input 2 \* 9 \* xxxxx #

Input 2 \* 0 \* xxxxxxxx

#### 5.8 You can delete the settings for outgoing calls ("2 \*\*\*)

- Enter order number can be set aside ("2 \*")



- Enter delete command code "\*\*\*"
- Enter completion code "#"
- Beep beep's continued success to issue other settings
- Input error given **busy tone**, the handset must be linked back to

Do you want to delete the number that can be allocated directly to set # 2 \*\*\*

Can be emptied of all allocation of numbers

## 5.9 Memory dial numbers set (3 \* n \*)

- Memory dialing command input 3 \*
- Enter group "N \*" (N is 0-9)
- Input can allocate memory dialing the telephone number "nnnnnnnnnnnnnnnnnn"
- Enter completion code "#"
- Beep beep's continued success to issue other settings
- Input error given **busy tone**, the handset must be linked back to

Set memory dial phone number

Enter 3 \* 1 \* 18005604652 # the first group

Enter 3 \* 2 \* 18007722289 # II

Enter 3 \* 3 \* 18003399911 # the third group

Enter 3 \* 4 \* 180 048 345 222 # the fourth group

Enter 3 \* 5 \* 18007278686 #

Enter 3 \* 6 \* xxxxxxxxxxxx #

Enter 3 \* 7 \* xxxxxxxxxxxx #

Enter 3 \* 8 \* xxxxxxxx #

Enter 3 \* 9 \* 011886229331400 #

Enter 3 \* 0 \* 18004279977 # 10th Group

## 5.10 Memory dialing Dial deletion set ("3 \*\*\*")

- Enter memory dial number command ("3 \*")
- Enter delete command code "\*\*\*"
- Enter completion code "#"
- Beep beep's continued success to issue other settings
- Input error given **busy tone**, the handset must be linked back to

Do you want to delete all memory dial numbers input # 3 \*\*\*

Memory dial-up number is cleared

#### 5.11 Dial end of the time setting ("4 \* 0 \* n")

- Enter the end time setting dial 4 \*
- Enter a wait seconds "0 \* N" (N is 0-9) record phone numbers of less than 3 or 3 seconds
- Enter completion code "#"
- Beep beep's continued success to issue other settings
- Input error given **busy tone**, the handset must be linked back to

Factory setting is 6 seconds

Dial-end time will be set at 4 secondsEnter "4 \* 0 \* 4 #"

The following settingsDial-up is A, but is allocated a total of 10 group B

A: called number

B: Transfer Code

Because the called number (A) has a fixed four groups 911, \* 911, \* 091, \* 0987654321

#### 5.12 Adapter code setting ("6 \* n \*")

- Enter code adapter command 6 \*
- Enter group "N \*" (N is 0-9)
- Enter code called 911, \* 911, \* 091, \* 0987654321 ....., \*
- Enter forwarding phone number "nnnnnnnnnnnnnnnnnn"
- Enter completion code "#"
- Beep beep's continued success to issue other settings
- Input error given **busy tone**, the handset must be linked back to "

#### 5.13 Remove adapter code set ("6 \*\*\*\*")

- Enter code adapter command 6 \*
- Enter delete "\*\*\*"
- Enter completion code "#"
- Beep beep's continued success to issue other settings
- Input error given **busy tone**, the handset must be linked back to "

Example: Remove all adapter code Input # 6 \*\*\*

The entire switching yard is removed

#### 5.14 Called number set ("7 \*\* n \*")

- Enter the called number command 7 \*\*
- Enter the called number group number (0-9) \*
- Enter the phone number called number nnnnnnnnnnnnn
- Enter complete memory dial code "#"
- Beep beep's continued success to issue other settings
- Input error given **busy tone**, the handset must be linked back to

Factory must be set to 1,2,3,4 group called number.

Group 1 called No. 911

No. 2 group called \* 911,

No. 3 group called \* 091,

No. 4 group called \* 0987654321

Examples amended as follows:

Replace the fourth group \* 0987654321 1234567890 1234567890 input # 7 \*\* 4 \*

#### 5.15 Remove back to the default setting called number ("7 \*\*\*\*")

- Enter the called number command 7 \*\*
- Delete command input
- Enter complete memory dial code "#"
- Beep beep's continued success to issue other settings
- Input error given **busy tone**, the handset must be linked back to

Example: Called number back to factory settings. Input 7 \*\*\*\*#

Example: 911 phone call to allocate 1234

Input 6 \* 1 \* 911 \* 1234 #

ExamplePhone dial \* 911 to allocate 5678

Input 6 \* 2 \*\* 911 \* 5678 #

Example: Phone dial \* 091 to allocate 0000

Input 6 \* 3 \*\* 091 \* 0000 #

Example Phone dial \* 0987654321911 allocated 9999

Input 6 \* 4 \*\* 0987654321 \* 9999 #

## **FCC Warning Statement**

This device complies with Part 15 of the FCC Rules. Operation is subject to the following two conditions:

- (1) this device may not cause harmful interference, and
- (2) this device must accept any interference received, including interference that may cause undesired operation.

This equipment has been tested and found to comply with the limits for a class B digital device, pursuant to part 15 of the FCC Rules. These limits are designed to provide reasonable protection against harmful interference in a residential installation.

This equipment generates, uses and can radiate radio frequency energy and, if not installed and used in accordance with the instructions, may cause harmful interference to radio communications. However, there is no guarantee that interference will not occur in a particular installation. If this equipment does cause harmful interference to radio or television reception, which can be determined by turning the equipment off and on, the user is encouraged to try to correct the interference by one or more of the following measures:

- Reorient or relocate the receiving antenna.
- Increase the separation between the equipment and receiver.
- Connect the equipment into an outlet on a circuit different from that to which the receiver is connected.
- Consult the dealer or an experienced radio/TV technician for help.

**Any changes or modifications not expressly approved by the party responsible for compliance could void the user's authority to operate the equipment.**

## **Prohibition of Co-location**

This device and its antenna(s) must not be co-located or operating in conjunction with any other antenna or transmitter

## **Safety Information**

To maintain compliance with FCC's RF exposure guidelines, this equipment should be installed and operated with minimum distance 20cm between the radiator and your body. Use on the supplied antenna. **Use on the supplied antenna. Unauthorized antenna, modification, or attachments could damage the transmitter and may violate FCC regulations.**