

# **Multifunctional Digital Photo Frame With Speaker Stand**

## **Operating Instructions Model: Boom Boom**



Please read these instructions carefully before use  
and retain it for future reference

Federal Communications Commission(FCC)Statement  
You are cautioned that changes or modifications not expressly approved by the part responsible for compliance could void the use's authority to operate the equipment

#### FCC-Class B

This equipment has been test and found to comply with the limits for a class B digital device pursuant to part 15 of the FCC Rules.These limits are designed to provide reasonable protection against harmful interference in a communications.However,there is no guarantee that interference will not occur in particular installation .If this equipment does,cause harmful interference to radio or television reception, which can be determined by turning the equipment off and on,the user is encouraged to try to correct the interference by one or more of the following measure:

Reorient or relocate the receiving antenna.

Increase the separation between the equipment and receiver Connect the equipment into an outlet on a circuit different from that to wihich the receiveris connected.

# TABLE OF CONTENTS

Safety instructions	2
Features	4
Technical Specifications	4
Checking accessories	5
Location of controls	6
Remote control operation	8
Operation	10
Preparation	10
Begin to use	10
Playing Photos	11
Playing Music	12
Playing Movie	13
Files Management	13
Source	14
Calendar	14
Setting	15
PC Sync Display Function	16
Trouble shooting	17
Regulation & Compliance	19
Limited Warranty	20

# SAFETY INSTRUCTIONS

## WARNING

TO PREVENT FIRE OR SHOCK HAZARD, DO NOT USE THE PLUG WITH AN EXTENSION CORD, RECEPTACLE OR OTHER OUTLET UNLESS THE BLADES CAN BE FULLY INSERTED TO PREVENT BLADE EXPOSURE. TO REDUCE THE RISK OF FIRE OR ELECTRIC SHOCK, DO NOT EXPOSE THIS APPLIANCE TO RAIN OR MOISTURE. TO PREVENT ELECTRICAL SHOCK, MATCH WIDE BLADE PLUG TO WIDE SLOT, FULLY INSERT.



The lightning flash with arrowhead symbol, within an equilateral triangle, is intended to alert the user to the presence of uninsulated dangerous voltage within the product enclosure that may be of sufficient magnitude to constitute a risk of electric shock to persons.

### CAUTION

**RISK OF ELECTRIC SHOCK  
DO NOT OPEN**

**WARNING: TO REDUCE THE RISK OF ELECTRIC SHOCK, DO NOT REMOVE COVER (OR BACK). NO USER SERVICEABLE PARTS INSIDE. REFER SERVICING TO QUALIFIED SERVICE PERSONNEL.**



The exclamation point within an equilateral triangle is intended to alert the user to the presence of important operating and maintenance (servicing) instructions in the literature accompanying the appliance.

## IMPORTANT SAFETY INSTRUCTIONS

1. Read these instructions.
2. Keep these instructions.
3. Heed all warnings.
4. Follow all instructions.
5. Do not use this apparatus near water.
6. Clean only with dry cloth.
7. Do not block any ventilation openings, install in accordance with the manufacturers instructions.
8. Do not install near any heat sources such as radiators, heat registers, stoves, or other apparatus (including amplifiers) that produce heat.
9. Do not defeat the safety purpose of the polarized or grounding-type plug. A polarized plug has two blades with one wider than the other. A grounding type plug has two blades and a third grounding prong. The wide blade or the third prong are provided for your safety. If the provided plug does not fit into your outlet, consult an electrician for replacement of the obsolete outlet.
10. Protect the power cord from being walked on or pinched particularly at plugs, convenience receptacles, and the point where they exit from the apparatus.
11. Only use attachments/accessories specified by the manufacturer.
12. Use only with the cart, stand, tripod, bracket, or table specified by the manufacturer, or sold with the apparatus. When a cart is used, use caution when moving the cart/apparatus combination to avoid injury from tip-over.
13. Unplug this apparatus during lightning storms or when unused for long periods of time.
14. Refer all servicing to qualified service personnel. Servicing is required when the apparatus has been damaged in any way, such as power-supply cord or plug is damaged, liquid has been spilled or objects have fallen into the apparatus, the apparatus has been exposed to rain or moisture, does not operate normally or has been dropped.
15. This appliance shall not be exposed to dripping or splashing water and that no object filled with liquid such as vases shall be placed on the apparatus.
16. Plug this apparatus to the proper wall outlet and make the plug to be disconnected readily operable.

## FEATURES

Thank you for purchasing this Multifunctional Digital Photo Frame. This deluxe Multifunctional Digital Photo Frame will bring more happiness to your colorful life.

1. Playing photos by slide show with music background.
2. Playing Music
3. Playing Movies
4. Calendar function
5. Files management
6. 2.1 channel stereo Speaker stand (can be used as speaker of other Audio device connected to the set using supplied audio cable).
7. Other memory storage compatibility (connecting to the set using supplied USB cable).
8. Memory cards compatibility
9. PC Sync Display Function
10. Deluxe easy-to-use remote control included.

## TECHNICAL SPECIFICATIONS

Screen size: 8 inches 800\*600 4:3 ratio

Speaker Output: 8W (2W\*2+4W)RMS

Supported file format: JPEG/BMP/JPEG Progressive/EXIF/MP3/WMA/AAC/WAV/M-Jpeg/Mpeg4/H.264(D1)

Acceptable photo cards: MS, MS Pro, MMC, SD, XD

USB ports: USB 1.1 and USB 2.0

Internal memory storage: 1GB

Power supply: AC 110V-240V~60/50Hz (DC 9V2A)

Max power consumption: 15 W

Dimensions (with frame): 260(L) x 230(W) x 244(H) mm

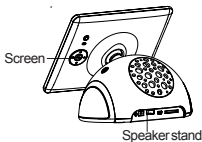
Weight: 1016 g

## CHECKING ACCESSORIES

After unpacking, make sure the following accessories are supplied with your unit. If you find something missing or broken, contact the local dealer in your area.

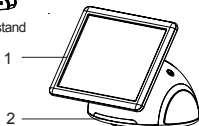
1. Digital photo frame with speaker stand
2. AC adaptor
3. Remote control
4. USB cable
5. 1 set of audio cable with 3.5mm plug
6. Installation CD
7. Operating Instructions

## LOCATION OF CONTROLS



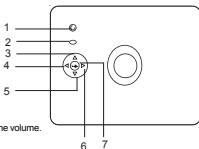
### Front view of screen

1. LCD screen
2. Remote sensor

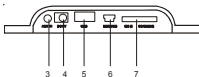


### Rear view of screen

1. ESC button-Press to return to upper menu.
2. Menu button-Press to show the edit menu.
3. Up button- For menu selection and raising the volume.
4. Left button-For menu selection.
5. Down button-For menu selection and reducing the volume.
6. Right button-For menu selection.
7. Enter/play button- Press to confirm the selection.



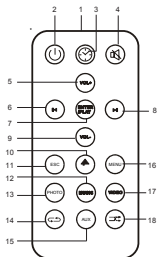
### Speaker stand



1. Power button-press to switch the set on or off.
2. Built-in speakers- For audio out put.
3. Aux in jack-Connecting to the component audio out put.
4. DC in jack-Connecting to the attached AC/DC adaptor.
5. USB port-Connecting to other storage using USB cable.
6. Mini USB jack-Connecting to PC using USB cable.
7. SD/MMC/MS card slot-For inserting memory cards.

## Remote control

1. IR diode - Sends single to the set.
2. Power ON/OFF button-Switch set on or off.
3. Calendar button-Press to enter calendar mode.
4. Mute button-Press to turn off the volume. Press again to restore.
5. Volume + and UP button
6. Left button
7. Enter/Play button-Enter or play your selection.
8. Right button
9. Volume - and down button
10. Home button-Return to home menu.
11. ESC-Return to the upper menu.
12. Music-Press to enter music mode.
13. Photo-Press to enter photo mode.
14. Music repeat play button.
15. AUX-Press to select audio source.
16. Menu-Press to show edit menu.
17. Video-Press to enter video mode
18. Music shuffle play button.



## REMOTE CONTROL OPERATION

To use the remote control for the first time, please pull out the tab on the remote control.

## Replacing the remote control battery

Open the battery door as per illustration 1 and insert one CR2025 size battery (3V) into it according to the + marking as per illustration 2.

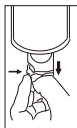


illustration 1

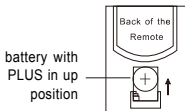


illustration 2

## OPERATION

### Preparation

For the first time you use this digital photo frame, you need to store some files (music, photo, video) into the internal memory or insert a card with music, photo files into the card slot.

1. Connect your set to AC power using the attached AC adaptor.
2. Press the POWER button on the speaker to turn on the set.
3. Connect the set and your compute by USB cord.
4. Store some picture, music, video files you like into the internal memory.
5. You can also insert the card into the card slot if you want to play the files on your card.

### Begin to use

Complete above steps, right picture will show on the screen, and you are ready to enjoy this multifunctional digital photo frame. You can adjust to your favorite watching angle by press or pull the screen.

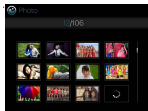


The home menu includes 7 selections, you can select the functions by pressing left or right buttons, then press ENTER/PLAY button to confirm or directly press the function buttons (PHOTO, MUSIC, VIDEO, Calendar) on the remote control to complete your operation. Press ESC button to return to upper menu. Press home button to return to home menu directly. Press up and down buttons to adjust the volume during play.

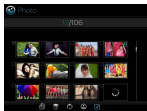
### Playing photos

1. Viewing the thumbnails

Enter the photo menu. The thumbnails of first 12 photos show on the screen. You can press left and right buttons to select the photo. Press ENTER/PLAY button to start the slide show play.



Thumbnail



Thumbnail menu

In thumbnail screen, you can press MENU button on the remote to show the edit menus, then use left and right and ENTER/PLAY buttons to edit the photos. Copy: Copy selected photo to the memory storage you like.

Delete: Delete selected photo.

Rotate: Rotate selected photo.

Photo effect: Adjust the hue of the photo.

Select: Select the photos you like to play, press enter again to abstain the selection.

2. Slide show playing

During pictures play by slide show, the music you stored in the memory will play together. You can press up or down button to adjust the volume, press ENTER/PLAY button to pause or return the play.



During play, press MENU button to show slide show menu. Press direction and Enter/play buttons to adjust the screen's hue, brightness, contrast, slide show speed, slide show display mode, full screen or normal screen, background music on or off.

### Playing Music

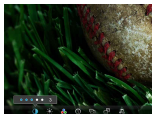
Enter the music menu. Select the music you want to start to play by left or right button, press the ENTER/PLAY button to play or pause the playback.

Press up or down button to adjust the volume.

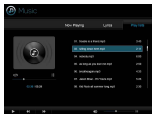
Press Repeat button to play the music repeatedly.

Press shuffle button to play the music in random order.

Press menu to switch to Playing list, music detail or lyric mode (only when lyric file exists).



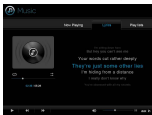
Slideshow menu



Playing list



Now Playing



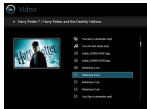
Lyric

### Playing Movie

Enter the movie menu. Select the movie you want to play by left or right button, press the ENTER/PLAY button to play. Press up or down button to adjust the volume.

### File Management

Enter the file menu. The detail of the files in the current source shows on the screen. You can press left or right button to select the file, press MENU button to toggle from COPY, DELETE, or return to the file, press ENTER/PLAY button to confirm.



### Source (Selecting the play source, internal memory storage, memory card, or device connected to the set by USB cable)

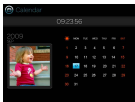
When your set has several file sources. You need to choose one source you like to play (internal memory storage, memory card, or device connected to the set by the USB cable).

Enter the Source screen, and select the source you want to play by direction buttons, press ENTER/PLAY button to confirm. Then, when you use the Photo, Music, or Video function, all the files are from the storage you selected.



### Viewing Clock and Calendar (you should set the correct date in advance. Please see next section)

Enter the calendar screen. Date and time show on the screen. Green frame highlight intraday date. The photos play on the left small window as slide show. You can press the left or right button to check the date on the previous or next month. Press ENTER button to toggle from calendar and clock.



### Changing Setting

Enter the setting screen. Press up or down button to select the item you want to set. Press ENTER/PLAY button to confirm. Press ESC to return to upper selection.

#### A. Date and Time

Setting the calendar date and clock.

#### B. General setting

Setting the smart energy, brightness, language, default and software updating.

For smart energy function:

When you select OFF, this unit will operate at full power mode, can't save power.

When you select Scheduler 50% or Scheduler 100%, it will automatically work as power saving 50% or 100% during nighttime (21:00~7:00), and will resume normal power mode during daytime (7:00 ~21:00).

When you select Save 20% or Save 50%, it will operate at that indicated power consumption rate in the full day.

#### C. Audio setting

Setting the music playing mode, shuffle on or off. Repeat one music, repeat all music or no repeat.

#### D. Information

Show this set's version, memory total storage and free storage.



## PC Sync Display Function

We have a PC sync display software in the driver disc of this set. File name: EZ display.

You can install the software to your computer as the way you install any software. After installation, the computer may remind you to restart the computer, do as the instruction. Then connect the DPF set and your computer by USB cable, run the software, below soft-ware surface will show on you computer.



Click DISPLAY DEVICE, the display on your computer will also show on the screen of DPF set. Using this function, two people can watch photos or movies on your computer and DPF set together. But no sound come out from the DPF set. Select the selections under Mirror Display and Extension Display to adjust the display of the DPF screen. Select STORAGE DEVICE, computer screen will disappear from the DPF screen, the DPF set will restore to a removable device for you to transfer files.

## Trouble shooting

In case you meet some problems when you use this set, please read below informations before you call for technical assistance or return the set.

Symptom	Remedy
No power.	<ol style="list-style-type: none"><li>1. Please only use the attached AC adaptor.</li><li>2. Please check if the AC adaptor firmly plugged into the power outlet. Make sure your out let has power.</li><li>3. Please remember to press the power button on the speaker to turn on the set.</li><li>4. One of the safety mechanisms may be operating. In this event, unplug the set from power outlet and plug it again.</li></ol>
The set doesn't work.	<ol style="list-style-type: none"><li>1. Verify that there are correct files in the internal storage or you have inserted a memory card or other component device into the proper slot. Only JPEG/BMP/JPEG Progressive/ EXIF/MP3/WMA/AAC/WAV/M-Jpeg/ Mpeg4/H.264(D1) files can be played.</li><li>2. Enter to Source menu to select source.</li></ol>
The remote control does not work.	<ol style="list-style-type: none"><li>1. The distance is too long or the angle exceeds 30 degrees.</li><li>2. The battery of the remote control is no power.</li><li>3. The remote sensor is perturbed by another luminous source</li></ol>
Your set dies or goes back to its welcome screen.	This may be caused by an electrostatic environment. Please disconnect the set from the power and reconnect it.
It can't be detected when connect the set to PC.	<ol style="list-style-type: none"><li>1. Please turn on the set when connect it to PC.</li><li>2. Please reconnect the set and your PC.</li><li>3. Please try to plug the big plug of the USB cable to another USB port of your PC.</li></ol>

## Regulation & Compliance

### Federal Communications Commission (FCC) Notice

This device complies with Part 15 of the FCC Rules. Operation is subject to the following two conditions: (1) This device may not cause harmful interference, and (2) This device must accept any interference received, including interference that may cause undesirable operation.

### Warning:

Changes or modifications to this unit not expressly approved by the party responsible for compliance could void the users authority to operate the equipment.

**NOTE:** This equipment has been tested and found to comply with the limits for a Class B digital device, pursuant to Part 15 of the FCC Rules. These limits are designed to provide reasonable protection against harmful interference in a residential installation. This equipment generates, uses, and can radiate radio frequency energy and, if not installed and used in accordance with the instructions, may cause harmful interference to radio communications. However, there is no guarantee that interference will not occur in a particular installation. If this equipment does cause harmful interference to radio or television reception, which can be determined by turning the equipment off and on, the user is encouraged to try to correct the interference by one or more of the following measures:

- Reorient or relocate the receiving antenna.
- Increase the separation between the equipment and receiver.
- Connect the equipment into an outlet on a circuit different from that to which the receiver is connected.
- Consult the dealer or an experienced radio/TV technician for help.

## Limited Warranty

Please read this Limited Warranty carefully. The limited warranty set forth below is given by GiiNii, the maker of your new digital picture frame, when purchased in the United States of America through an authorized retailer and used for non-commercial purposes. We warrant this product against manufacturing and material defects for a period of 90 days from the date of purchase. Do not return your product to the retailer for warranty claims.

1. Please maintain the Warranty Statement in a safe place along with your dated sales receipt. Please retain the original box in the event you need to make a warranty claim. Returning your product for a warranty claim in best done in the original box or an alternative package that ensure its safe return to GiiNii. Please contact our Customer Service team about the appropriate return-shipping package.
2. GiiNii Customer Service and Technical Support: 1-866-909-3550. Or, on line at: [www.giini.com](http://www.giini.com).
3. Parts and Labor Coverage. During the first 90 days of ownership, GiiNii will repair or replace the product, at its option, at no charge if the product is found to be defective due to material or manufacturing defects. GiiNii will provide a new product of similar or greater value at its discretion. Or, provide new or rebuilt replacement parts at its sole discretion. Replacement or repair of one part of the product does not constitute replacement or repair of other parts of the product. The customer bears the responsibility to ship the product back to GiiNii, at their cost. Pending review

of the product, that shipping cost will be refunded to the customer. To make a warranty claim, you must first contact Customer Service and receive a Return Authorization Code. No repairs or replacements can be made without a Return Authorization Code. After the first 90 days of ownership, repair costs are the responsibility of the owner.

4. Excluded Items Not Covered by the Warranty:
  - a Cosmetic damage or damages due to accident, misuse, abuse or negligence;
  - b Commercial use of the product;
  - c Damage due to improper operation, improper maintenance, improper power supply;
  - d Customer inability to read, understand the provided instructions on how to properly use the product;

- e Modifications of any part of the product in any way; f Damage resulting from unauthorized attempted repair of the product;
- g Damage resulting from acts of nature or God.

To make a Warranty Claim please have the following items:

- a Your original dated proof of purchase from an authorized retailer in the United States;
- b Your original package that your product was sold in. Your warranty claim will not be honored without the original purchase receipt. If you do not have the original package, please consult with our Customer Service team to determine the best way to return your product to us. GiiNii cannot be responsible for damages incurred during return shipping; insurance is highly recommended.
- c Please provide written statement (typed or printed in block letters) that describes why your product is defective. On this document, you will need to include the Return Authorization Code provided by Customer Service, as well as your Name, return address, and a daytime phone number. Return shipments to GiiNii should be insured and sent via Registered Mail with proof of delivery.

#### Warranty Disclaimers

GiiNii and its parent company, affiliates or subsidiaries shall not be liable for any incidental or consequential damages for breach of any expressed or implied warranty on this product. Except to the extent prohibited by applicable law, any implied warranty of merchantability or fitness for a particular purpose on this product is limited in duration to the duration of this warranty. Application of this warranty may vary by state; this warranty gives you specific legal rights and you may have others based on the state you live in.

#### Replacement Parts

If you need a replacement part for your GiiNii Digital Picture Frame, call us at 1-866-909-3550 or write to us at: [customerservice@giiinii.com](mailto:customerservice@giiinii.com).

### Warning

Changes or modifications to this unit not expressly approved by GiiNii voids this warranty and may result in personal injury and/or property.