

USERS' MANUAL

MODEL: MO-368CR

Intended use

The product is intended for connection to a computer (USB port) and can be used as a card reader for SIM card and SD card.

Scope of delivery

- 1pc USB mouse
- 1pc users'manual
- 1pc CD driver

Features

- Mouse size: 98.5(L)*55.5(W)*36mm (H) (± 2 mm)
- Mouse Weight: 80g (± 5 g)
- High resolution: 800DPI
- USB optical mouse with card reader function (for SIM card and SD card)
- For cards like MMC, RS-MMC, MINI SD, MICRO SD, T-F card, with a cover and change to be a standard SD card, they are be able to be read too

Driver Installation

Driver is only for SIM card needed.


Step 1: put the CD into the CD-ROOM. And you' ll find an icon as below



PIC1

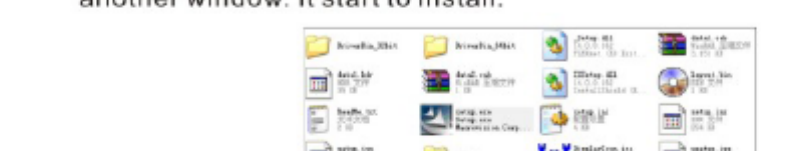
THIS DEVICE COMPLIES WITH PART 15 OF THE FCC RULES. OPERATION IS SUBJECT TO THE FOLLOWING TWO CONDITIONS: (1) THIS DEVICE MAY NOT CAUSE HARMFUL INTERFERENCE, AND (2) THIS DEVICE MUST ACCEPT ANY INTERFERENCE RECEIVED, INCLUDING INTERFERENCE THAT MAY CAUSE UNDESIRED OPERATION.

Open it and you' ll find the window as below



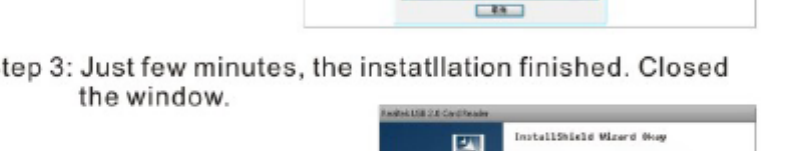
PIC2

Step 2: Double click the file “ setup. exe” . and you' ll ento into another window. It start to install.



PIC3


Step 3: Just few minutes, the instatllation finished. Closed the window.



PIC4

Function instruction:

- 1). For normal mouse function, just plug and play
- 2). To read SD card: Click the small button on the mouse surface, the case will be opened.



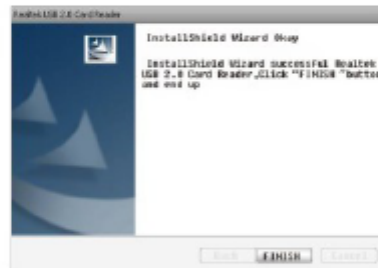
PIC5



PIC3



PIC4

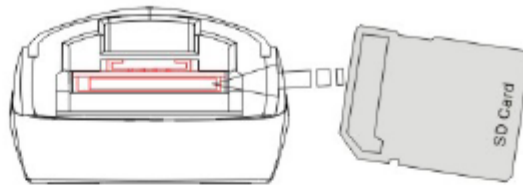


- 1). For normal mouse function, just plug and play
- 2). To read SD card: Click the small button on the mouse surface, the case will be opened.



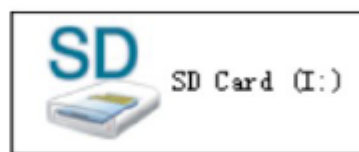
Put the SD card into underside of the slot.(do as the picture) ;

PIC6



Seconds later, it' s okay and you' ll find an icon in your computer which means it' s successful.

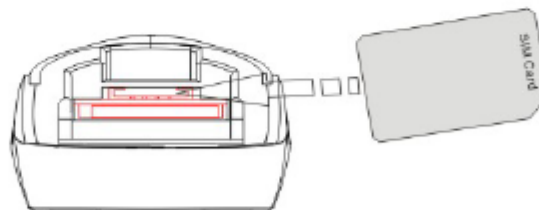
PIC7



3). To read SIM card:

- a. Click the small button on the mouse surface, the case will be opened. (as PIC 5)
- b. Put the SIM card into upside of the slot.(do as the picture)

PIC8

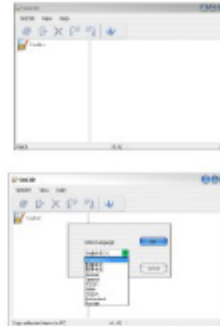


- c. Find and open the file “ USB 2.0 Card Reader Software-SimEdit” in your procedure.



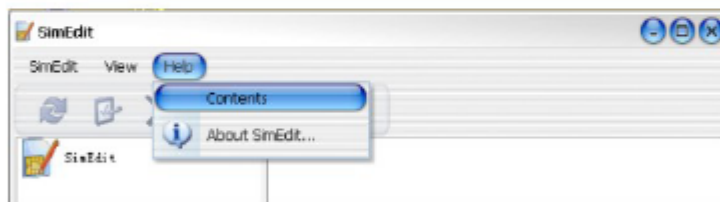
PIC9

- d. You'll end the window and select language (10 kinds of languages included)



PIC 10

- e. You can Read, Edit, and Delete the data in SIM card, such as Tel No. Contact Name, Message..
f. Any questions, you can click " Help--- Contents" .



PIC 11

Tips and notes

- Take away the card (SD or SIM card) once you finish your work.
- In case some unreadable icon occurred, pull out the mouse and minutes later plug it into the computer again.
- Don't open the upper case if no use for card reader

Compatible: IBM PC and Win95/98/ME/2000/XP/NT/Vista/ Win7

Note: This equipment has been tested and found to comply with the limits for a Class B digital device, pursuant to part 15 of the FCC Rules. These limits are designed to provide reasonable protection against harmful interference in a residential installation. This equipment generates, uses and can radiate radio frequency energy and, if not installed and used in accordance with the instructions, may cause harmful interference to radio communications. However, there is no guarantee that interference will not occur in a particular installation. If this equipment does cause harmful interference to radio or television reception, which can be determined by turning the equipment off and on, the user is encouraged to try to correct the interference by one or more of the following measures:

- Reorient or relocate the receiving antenna.
- Increase the separation between the equipment and receiver.
- Connect the equipment into an outlet on a circuit different from that to which the receiver is connected.
- Consult the dealer or an experienced radio/TV technician for help.

INFORMATION TO USER: THE USER'S MANUAL OR INSTRUCTION MANUAL FOR AN INTENTIONAL OR UNINTENTIONAL RADIATOR SHALL CAUTION THE USER THAT CHANGES OR MODIFICATIONS NOT EXPRESSLY APPROVED BY THE PARTY RESPONSIBLE FOR COMPLIANCE COULD VOID THE USER'S AUTHORITY TO OPERATE THE EQUIPMENT.

A SAMPLE STATEMENT IS BELOW:

NOTE: THE MANUFACTURER IS NOT RESPONSIBLE FOR ANY RADIO OR TV INTERFERENCE CAUSED BY UNAUTHORIZED MODIFICATIONS TO THIS EQUIPMENT. SUCH MODIFICATIONS COULD VOID THE USER'S AUTHORITY TO OPERATE THE EQUIPMENT.