

Hidden-Retractable Optical Mouse

User's Manual

Model:MC-318A



Thank you for use our products.

THIS DEVICE COMPLIES WITH PART 15 OF THE FCC RULES. OPERATION IS SUBJECT TO THE FOLLOWING TWO CONDITIONS: (1) THIS DEVICE MAY NOT CAUSE HARMFUL INTERFERENCE, AND (2) THIS DEVICE MUST ACCEPT ANY INTERFERENCE RECEIVED, INCLUDING INTERFERENCE THAT MAY CAUSE UNDESIRE OPERATION.

Main Features:

- .Space saving on desk, idea for travelers
- .Work on most surface, including wood and plastic
- .New style, latest design, for notebook users
- .Retract and stow away mechanism makes it easier for travellers and laptop users
- .Suitable for both right and left hand users and efficiently relief from physical stress
- .Basic 4 buttoned design
- .Super long working life
- .Tracking resolution:800/1600dpi

Safety Notice

1. This product complies with FCC and CE rules.
2. This product has no serviceable parts.Use of controls or adjustments of procedures other than the user guide may result in danger.

Function Introduction



Retractable Cable

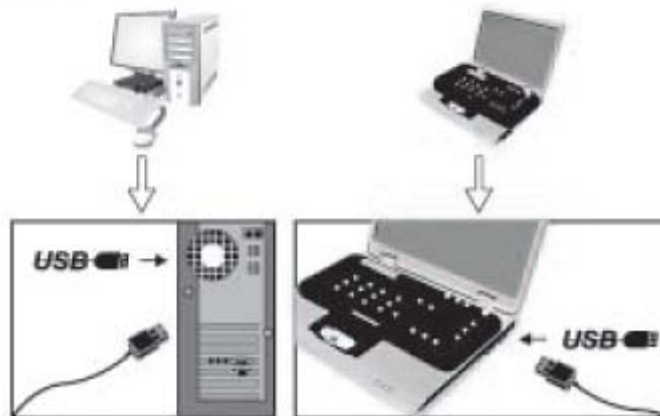
1. Extend the cord: Flip the mouse over and open the cap in the back. Pull out the USB cord and adjust to your desired length. Make sure to place the cord in the hold properly and lock the cap.
2. Retract the cord: Open the cap. Slightly pull out the USB cord and the embedded reel will wind the cord automatically.

Adjustable Resolution

Just click the DPI button and the resolution will change between 800dpi and 1600 dpi freely.
(default setting: 800dpi)



Installation



Plug the mouse into the computer by USB port.

Note: This equipment has been tested and found to comply with the limits for a Class B digital device, pursuant to part 15 of the FCC Rules. These limits are designed to provide reasonable protection against harmful interference in a residential installation. This equipment generates, uses and can radiate radio frequency energy and, if not installed and used in accordance with the instructions, may cause harmful interference to radio communications. However, there is no guarantee that interference will not occur in a particular installation. If this equipment does cause harmful interference to radio or television reception, which can be determined by turning the equipment off and on, the user is encouraged to try to correct the interference by one or more of the following measures:

- Reorient or relocate the receiving antenna.
- Increase the separation between the equipment and receiver.
- Connect the equipment into an outlet on a circuit different from that to which the receiver is connected.
- Consult the dealer or an experienced radio/TV technician for help.

INFORMATION TO USER: THE USER'S MANUAL OR INSTRUCTION MANUAL FOR AN INTENTIONAL OR UNINTENTIONAL RADIATOR SHALL CAUTION THE USER THAT CHANGES OR MODIFICATIONS NOT EXPRESSLY APPROVED BY THE PARTY RESPONSIBLE FOR COMPLIANCE COULD VOID THE USER'S AUTHORITY TO OPERATE THE EQUIPMENT.

A SAMPLE STATEMENT IS BELOW:

NOTE: THE MANUFACTURER IS NOT RESPONSIBLE FOR ANY RADIO OR TV INTERFERENCE CAUSED BY UNAUTHORIZED MODIFICATIONS TO THIS EQUIPMENT. SUCH MODIFICATIONS COULD VOID THE USER'S AUTHORITY TO OPERATE THE EQUIPMENT.