

2.4GHz Notebook Cordless Optical Mouse

User's Manual

MC-315RG



Thank you for use our products.

THIS DEVICE COMPLIES WITH PART 15 OF THE FCC RULES. OPERATION IS SUBJECT TO THE FOLLOWING TWO CONDITIONS: (1) THIS DEVICE MAY NOT CAUSE HARMFUL INTERFERENCE, AND (2) THIS DEVICE MUST ACCEPT ANY INTERFERENCE RECEIVED, INCLUDING INTERFERENCE THAT MAY CAUSE UNDESIRE OPERATION.

Specifications

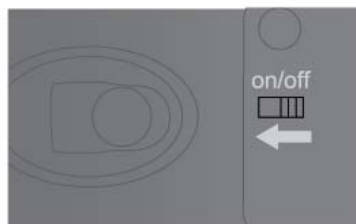
- . Wireless frequency: 2402 MHz—2480 MHz
- . Sensor report rate: 3500 frames/sec (Mouse)
- . Operation angle: 360°
- . Power requirement: 5V for USB port (Receiver)
- . ID number: 256 random ID
- . Resolutions: 800DPI
- . Sensor tracking speed: 14 inches/sec
- . Operation distance: 7-15m
- . USB vision: USB 1.1
- . Service voltage: 3V
- . Working current: 17 mA

Setup and Use

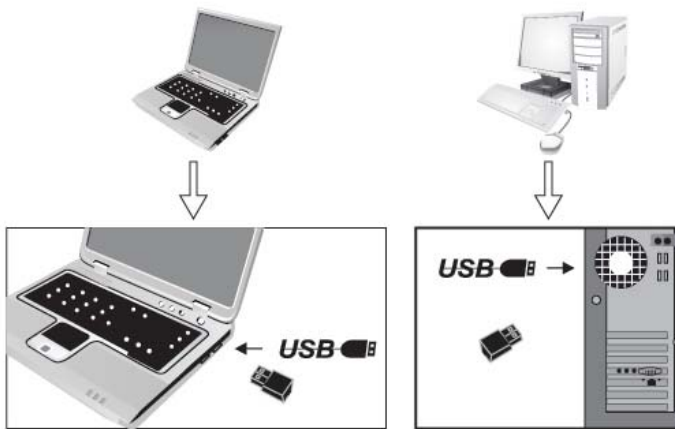
1. Push the upper case according to the indication of the following picture, the batteries case opened
2. Put the 2*AAA batteries into the slot according the polarity mark



3. Push the switch on the “on” position of the bottom



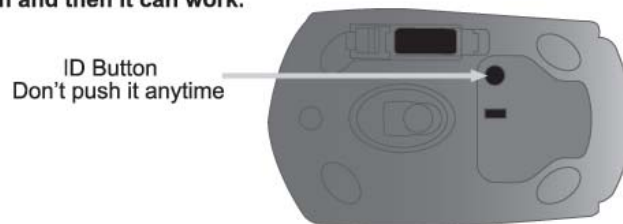
4.Plug the Nano receiver into the available USB port of computer



5.Wireless setup is ok. You can work freely

6.The small circle button near the lens is ID button,Don't puch it anytime.

In case you click it unintentionally,perhaps the mouse will stop working,you just need to click it again and then it can work.

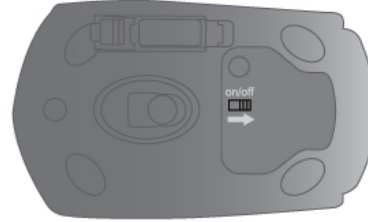


7.When you feels very slowly to move the mouse, it should be the batteries's power running low. Please consider to take the new batteries instead.

8.For the nano receiver, as suggestion it's better to be inserted it in the computer and don't get away. Of course, you can store the receiver into the mouse too.



9. There is a switch on the bottom of mouse. When you don't use it for a long time, you can switch it off to save the power. When working again, then just switch on.



Package Contents:

- . 1PC wireless & Optical Mouse
- . 1PC Nano USB Receiver
- . 1PC User Manual
- . 2*AAA batteries

System Requirements

- . Windows Me, Windows2000 or Windows XP or Vista operating system
- . IBM PC compatible system
- . USB Port

Tips and Notes

- . Don't use it on the reflecting and uneven surfaces which will effect the mouse function.
- . Don't put the nano receiver to stay with any bluetooth receivers together
- . Don't open and repair the mouse and receiver by yourself
- . Pls take the dry and soft cotton fabrics to clean the mouse
- . Remember to throw away the old batteries to the waste battery recycle bin.

In case, you find no function for the mouse, perhaps it's wrong matching ID between the mouse and the receiver. You can setup ID again by yourself: re-plug the receiver to the USB port of your computer and click the ID button within 3 seconds.

Note: This equipment has been tested and found to comply with the limits for a Class B digital device, pursuant to part 15 of the FCC Rules. These limits are designed to provide reasonable protection against harmful interference in a residential installation. This equipment generates, uses and can radiate radio frequency energy and, if not installed and used in accordance with the instructions, may cause harmful interference to radio communications. However, there is no guarantee that interference will not occur in a particular installation. If this equipment does cause harmful interference to radio or television reception, which can be determined by turning the equipment off and on, the user is encouraged to try to correct the interference by one or more of the following measures:

- Reorient or relocate the receiving antenna.
- Increase the separation between the equipment and receiver.
- Connect the equipment into an outlet on a circuit different from that to which the receiver is connected.
- Consult the dealer or an experienced radio/TV technician for help.

INFORMATION TO USER: THE USER'S MANUAL OR INSTRUCTION MANUAL FOR AN INTENTIONAL OR UNINTENTIONAL RADIATOR SHALL CAUTION THE USER THAT CHANGES OR MODIFICATIONS NOT EXPRESSLY APPROVED BY THE PARTY RESPONSIBLE FOR COMPLIANCE COULD VOID THE USER'S AUTHORITY TO OPERATE THE EQUIPMENT.

A SAMPLE STATEMENT IS BELOW:

NOTE: THE MANUFACTURER IS NOT RESPONSIBLE FOR ANY RADIO OR TV INTERFERENCE CAUSED BY UNAUTHORIZED MODIFICATIONS TO THIS EQUIPMENT. SUCH MODIFICATIONS COULD VOID THE USER'S AUTHORITY TO OPERATE THE EQUIPMENT.