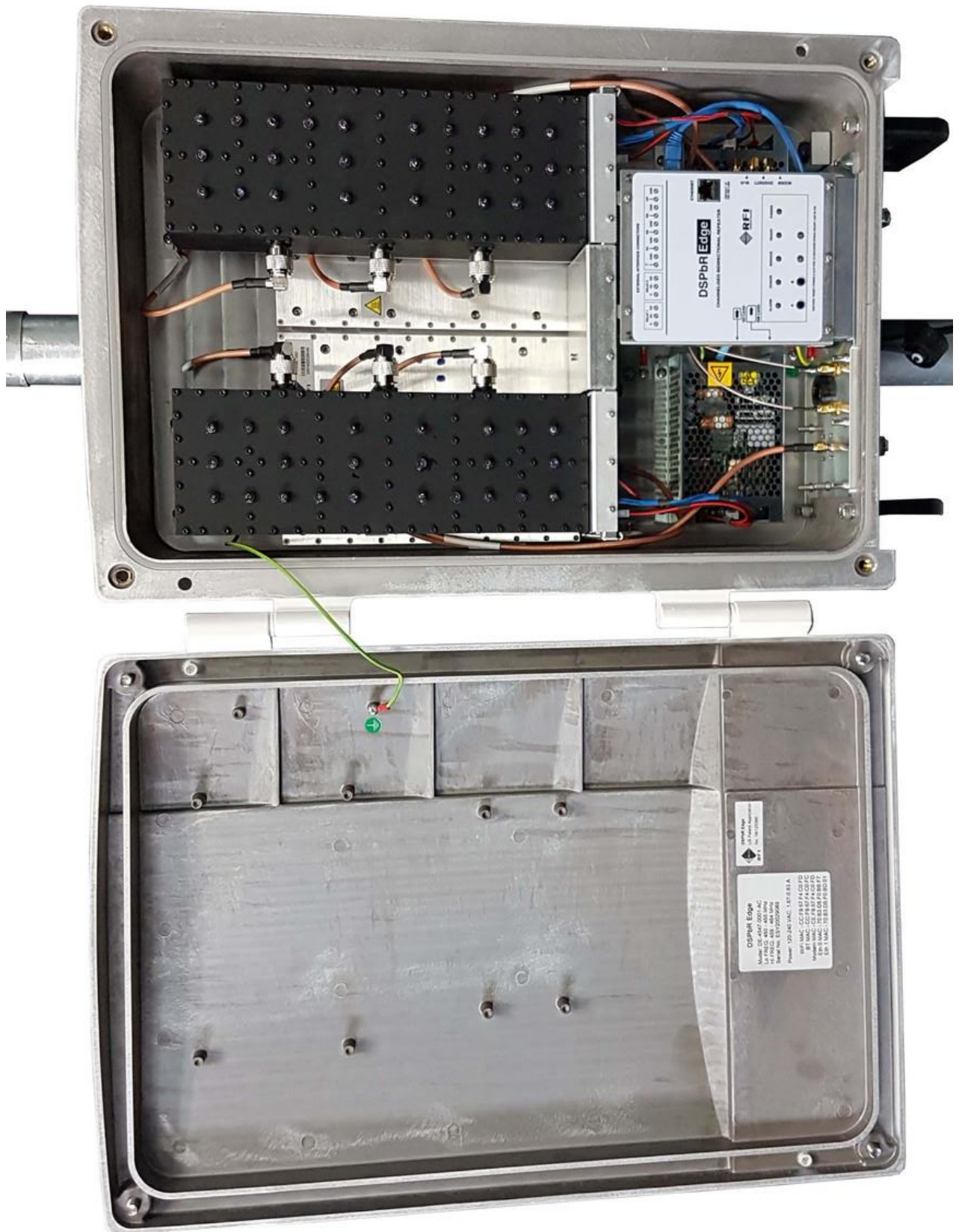


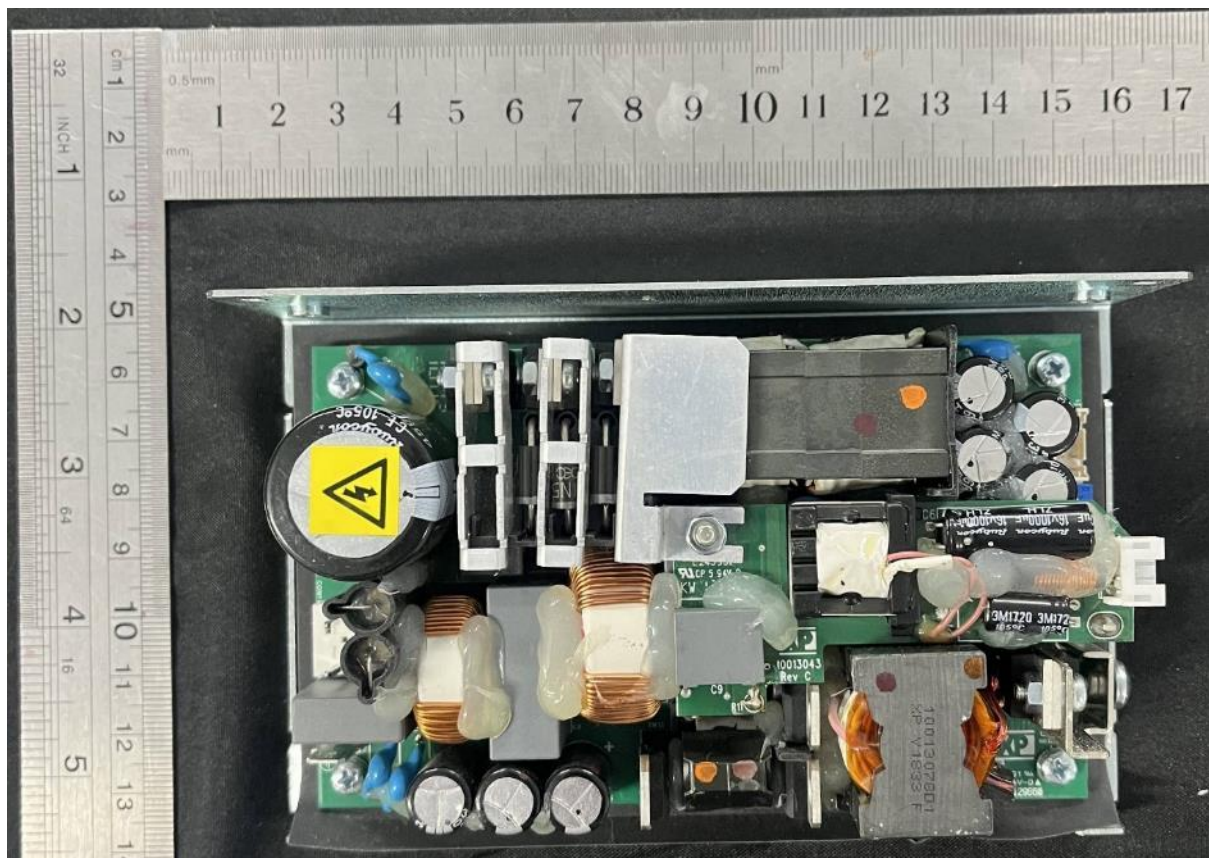
DSPbR Edge – Internal duplexers, AC PSUs.



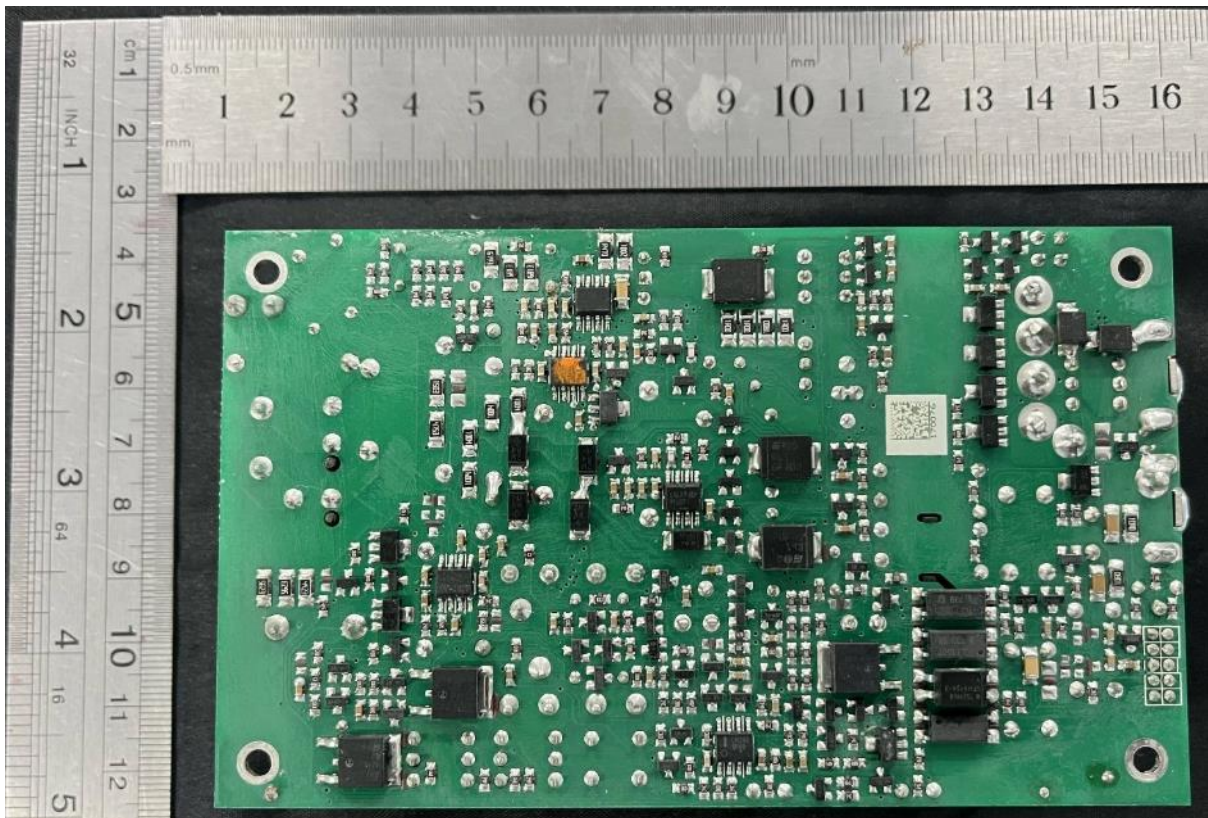
AC PSU – OEM component.



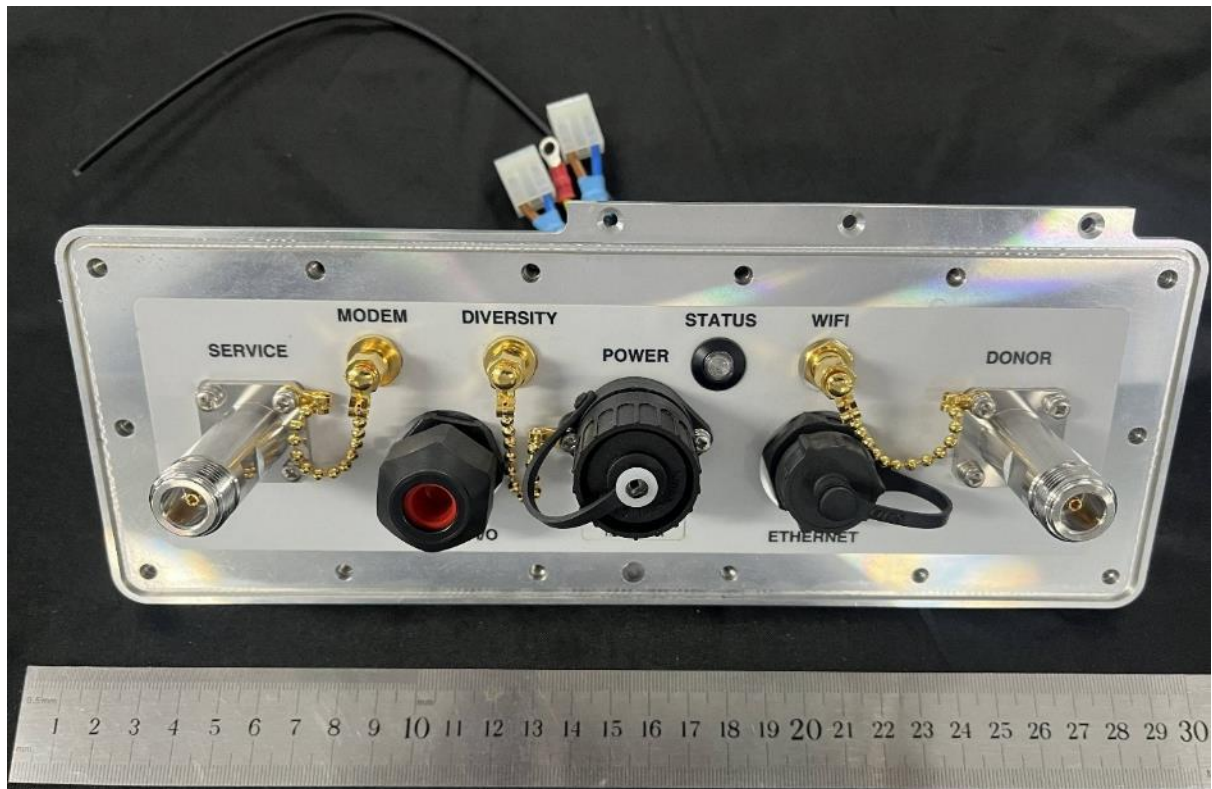
AC PSU – OEM component, Top view, cover off.



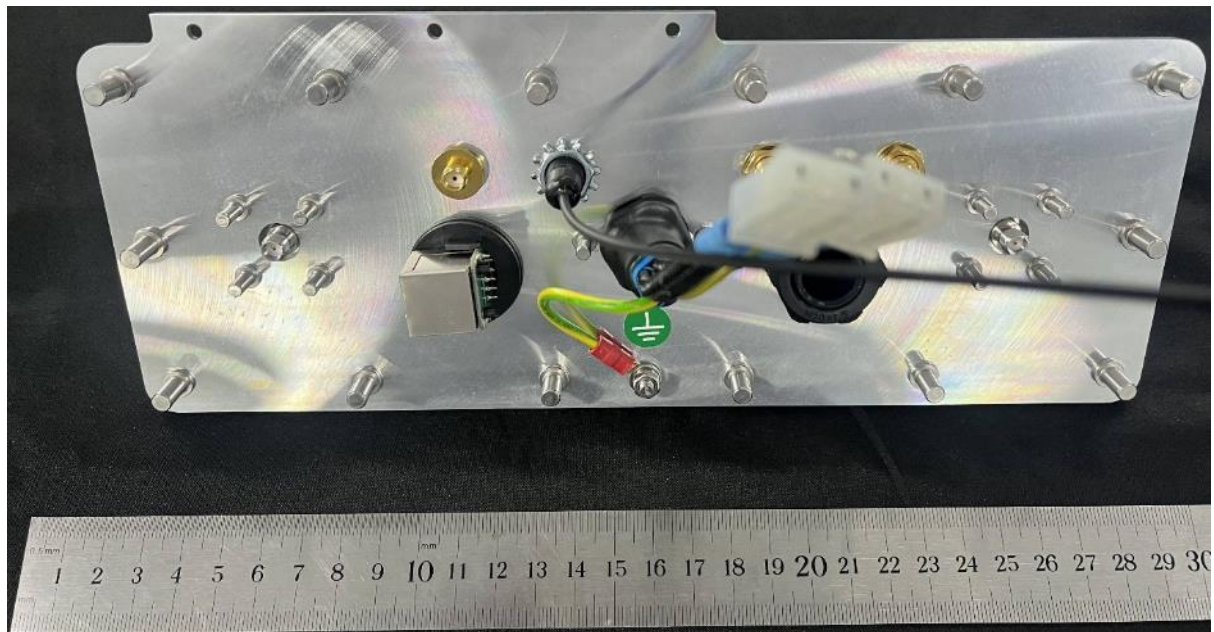
AC PSU – OEM component, PCB assembly, Bottom view.



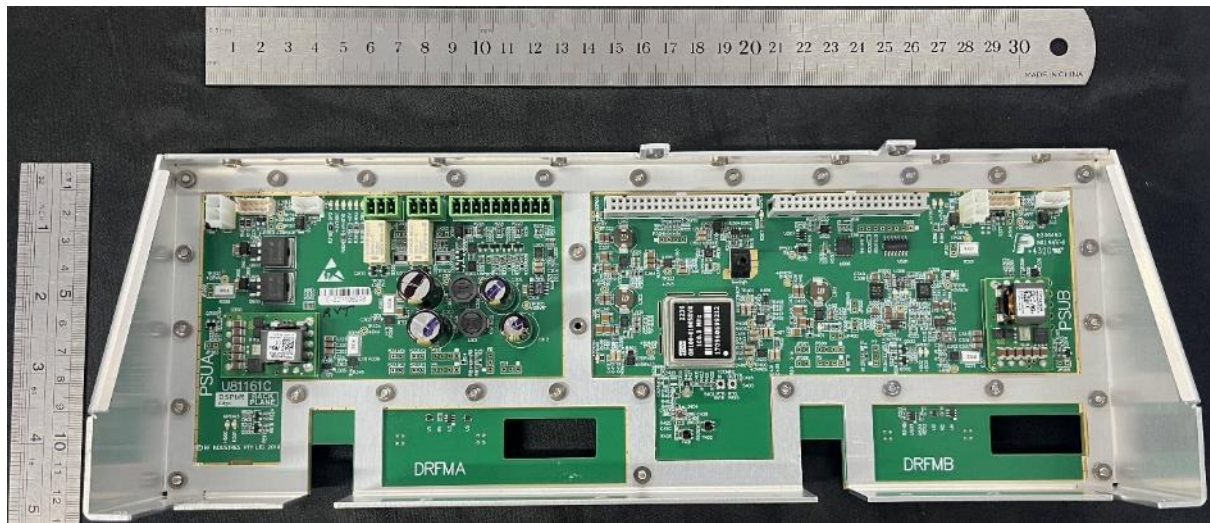
CONNECTOR PLATE ASSEMBLY – Front view.



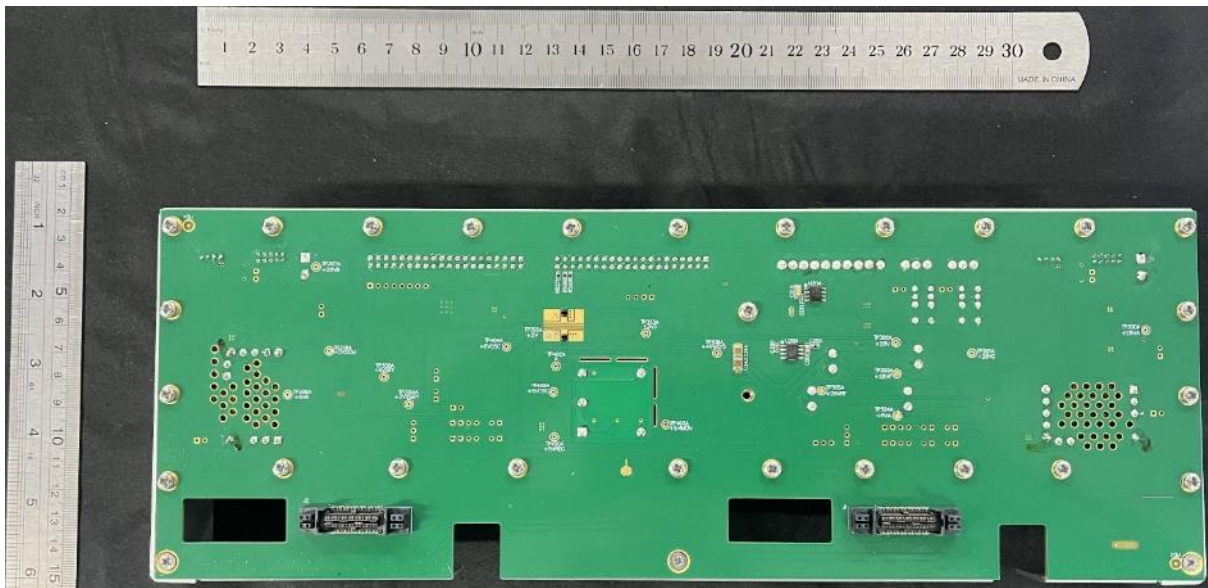
CONNECTOR PLATE ASSEMBLY – Rear view 1.



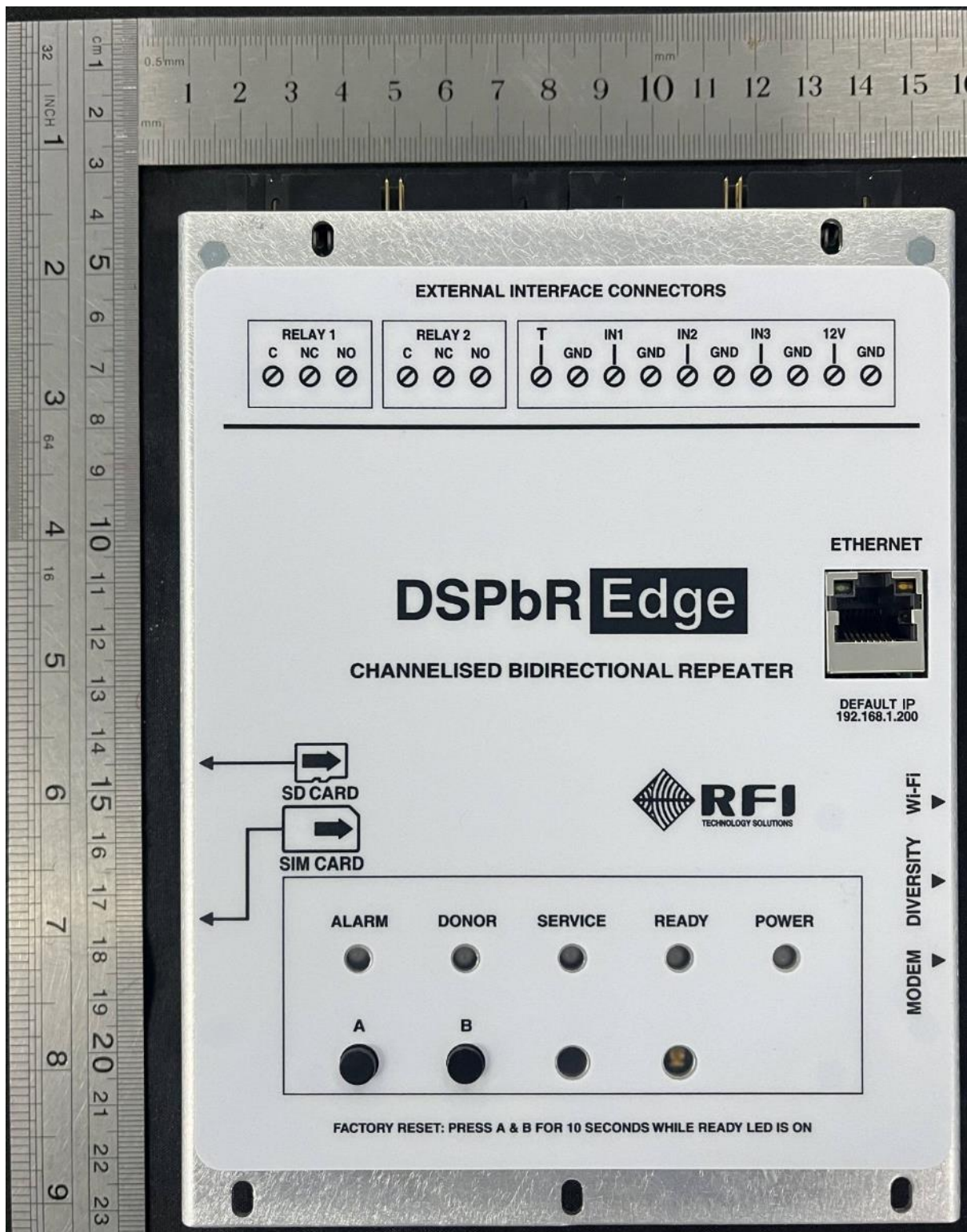
Backplane assembly in frame, Front view.



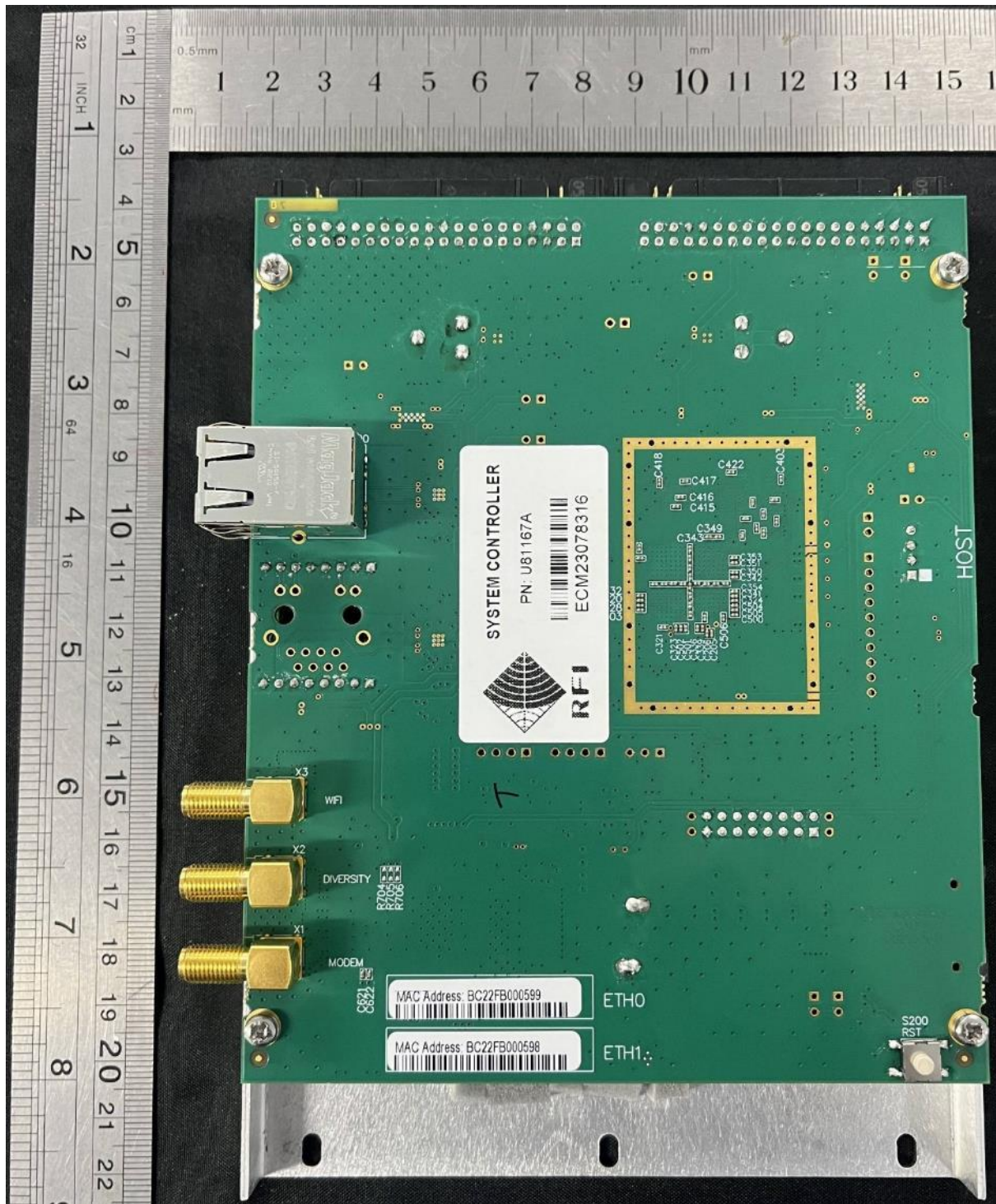
Backplane assembly in frame, Rear view.



SCM – Final assembly, Top view.



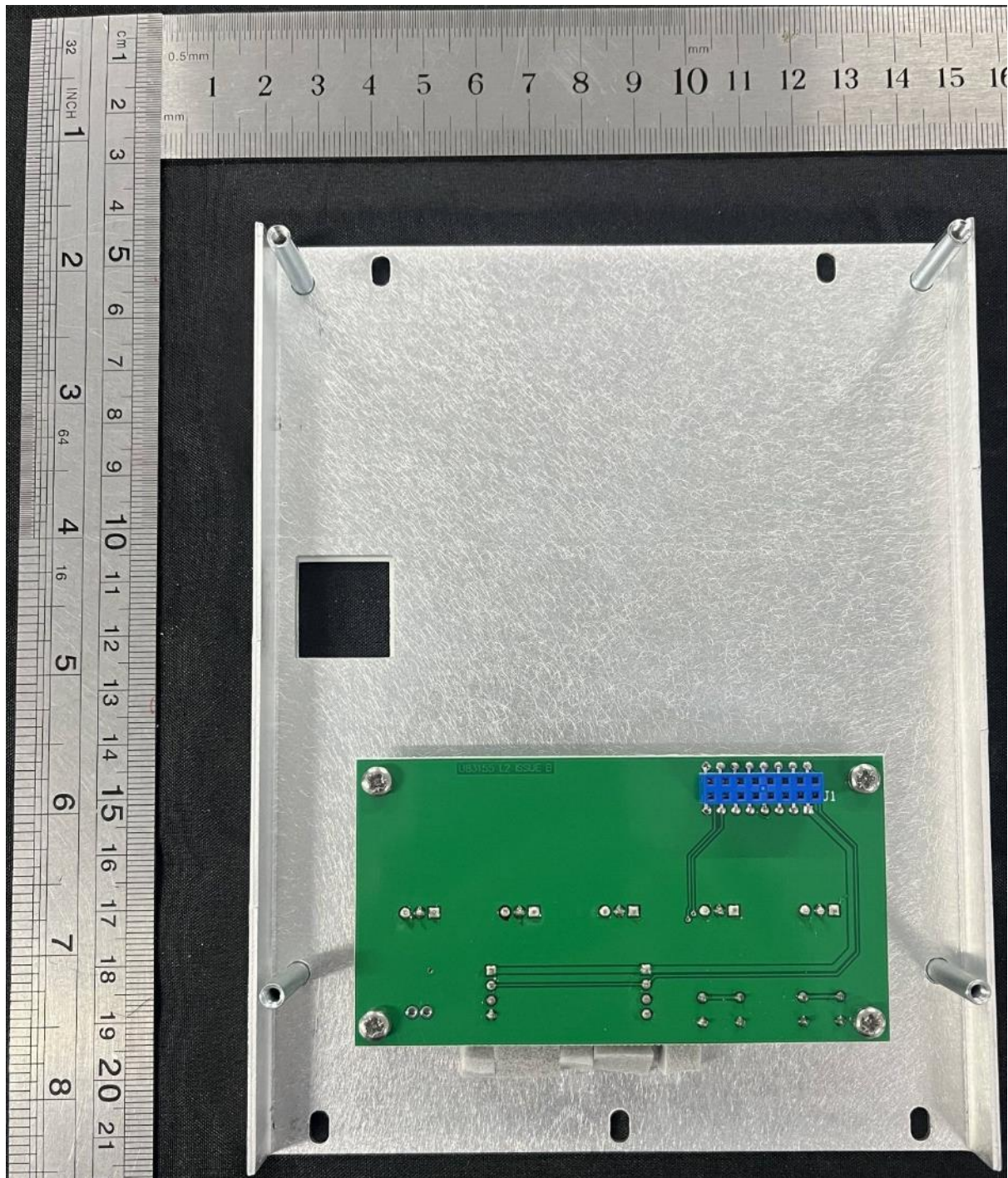
SCM – Final assembly, Bottom view.



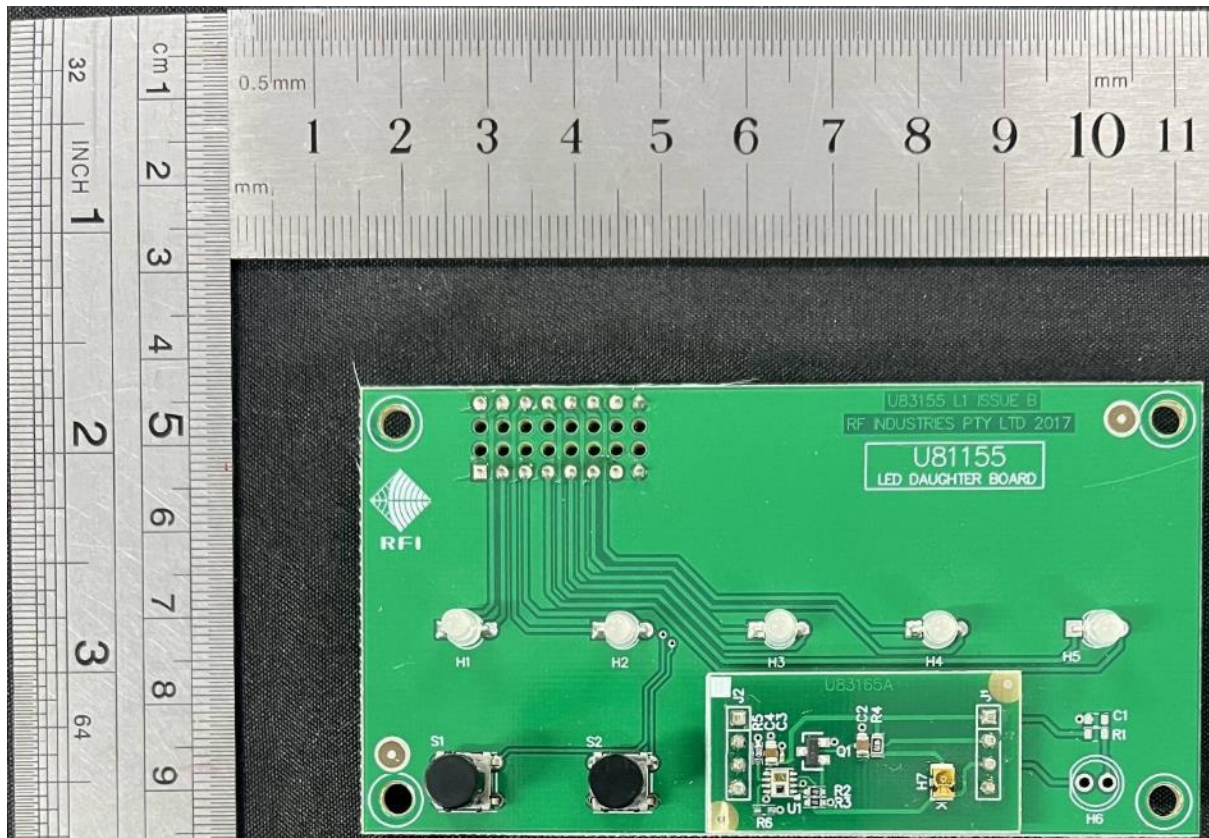
SCM – PCB Final assembly, Top view, Battery in.



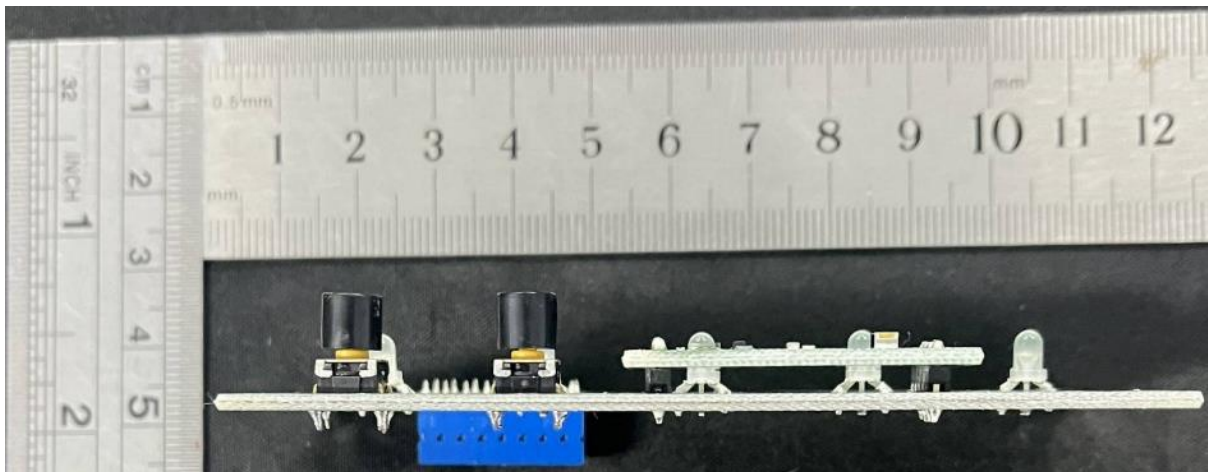
SCM – Cover plate assembly, Bottom view showing LED, switches & door sensor PCB Final assembly
Bottom view.



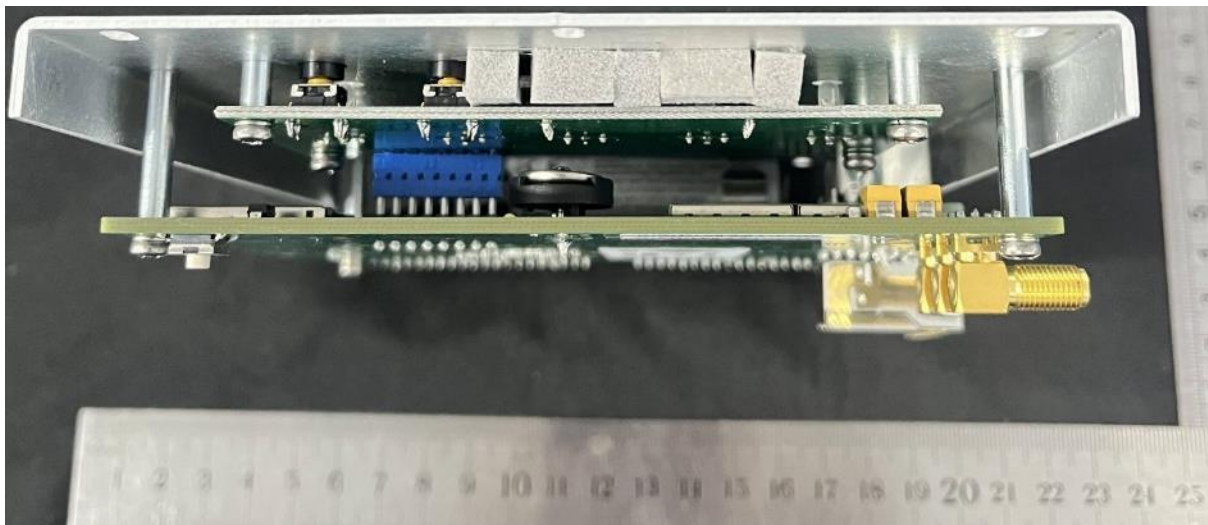
SCM – LED, switches & door sensor PCB Final assembly, Top view.



SCM – LED, switches & door sensor PCB Final assembly, Side view.



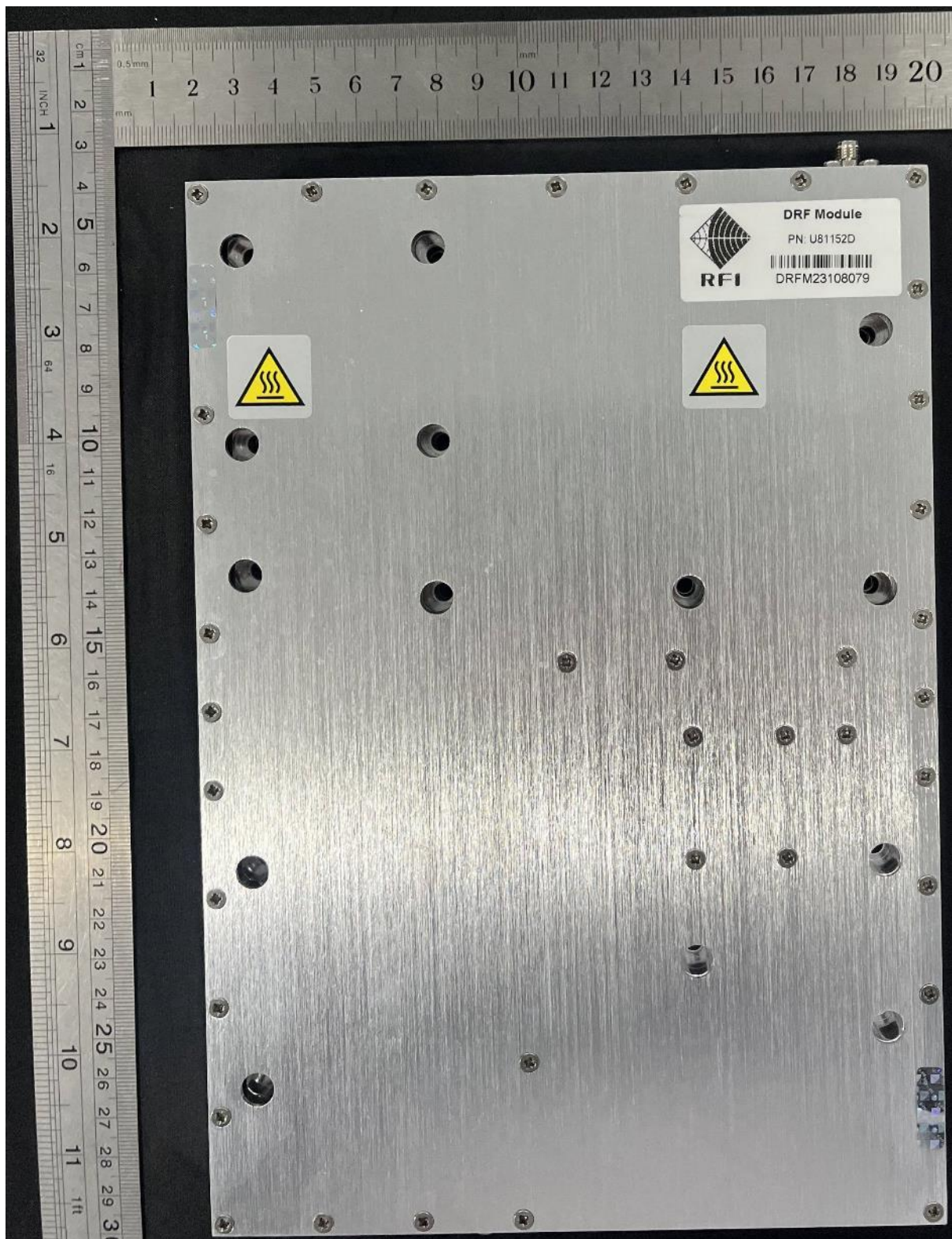
SCM – Final assembly, Side view, connector plate end.



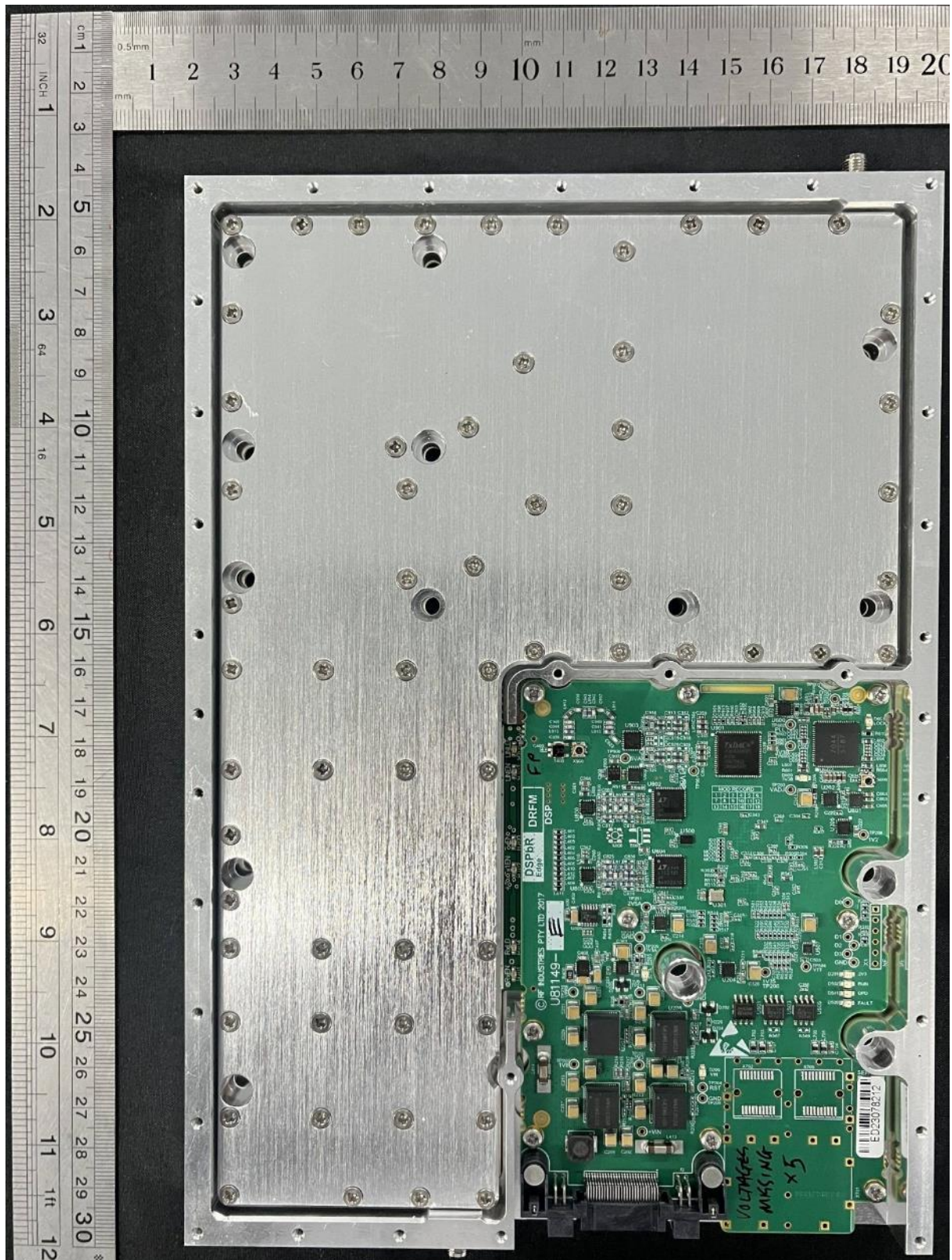
SCM – Final assembly, External interface connector side view.



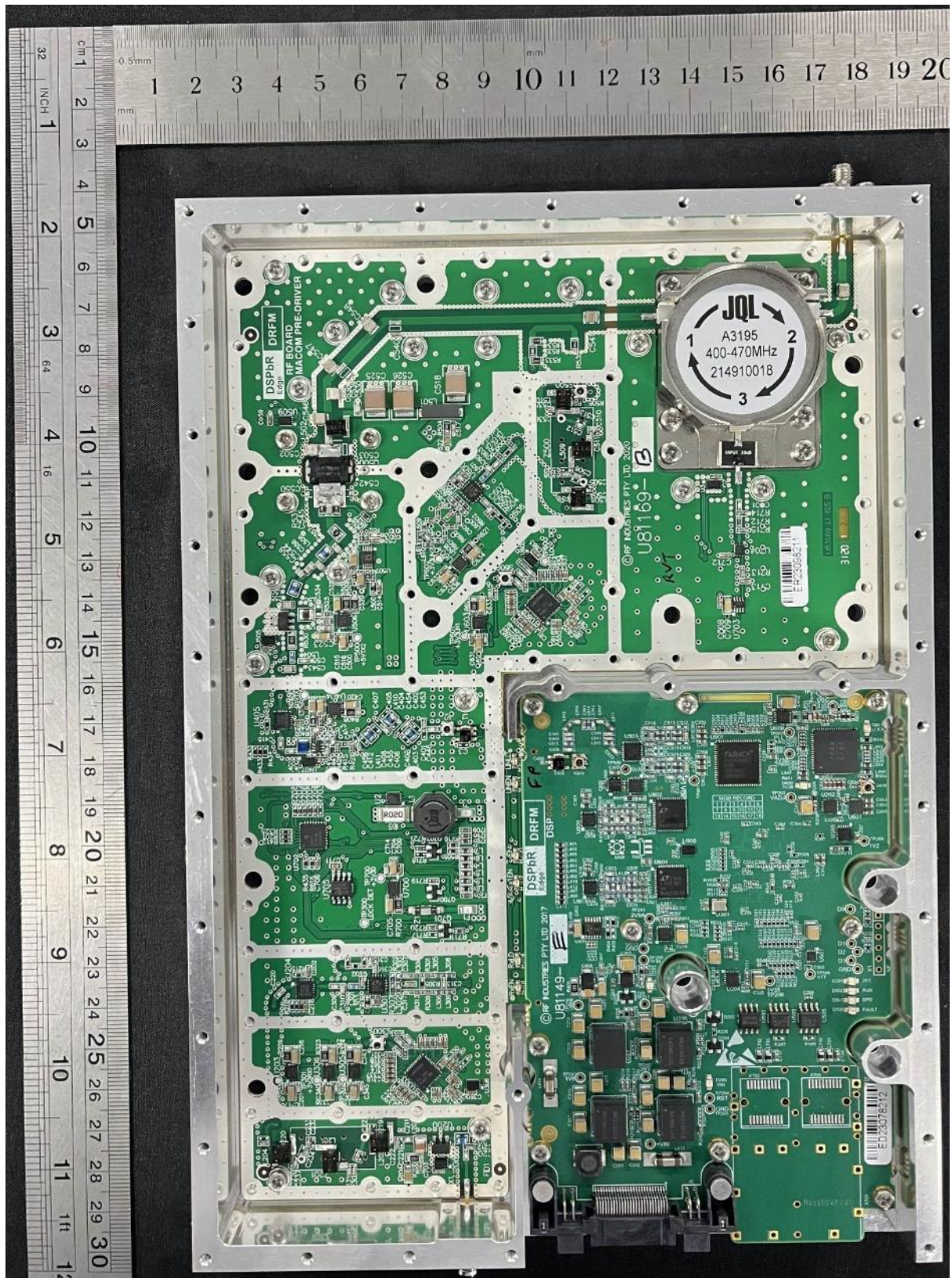
DRFM ASSEMBLY – Top view.



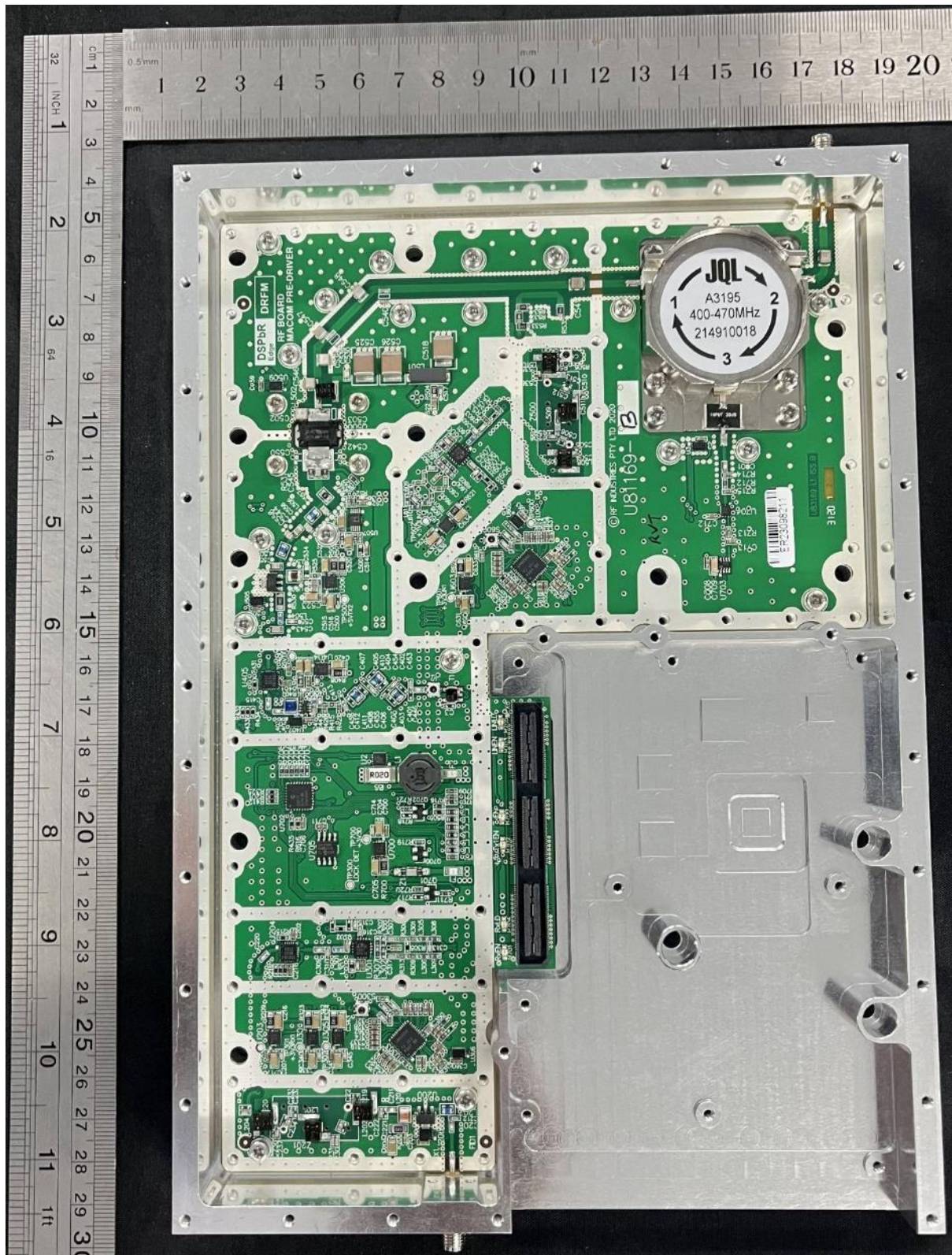
DRFM ASSEMBLY – Top cover off, internal screen on.



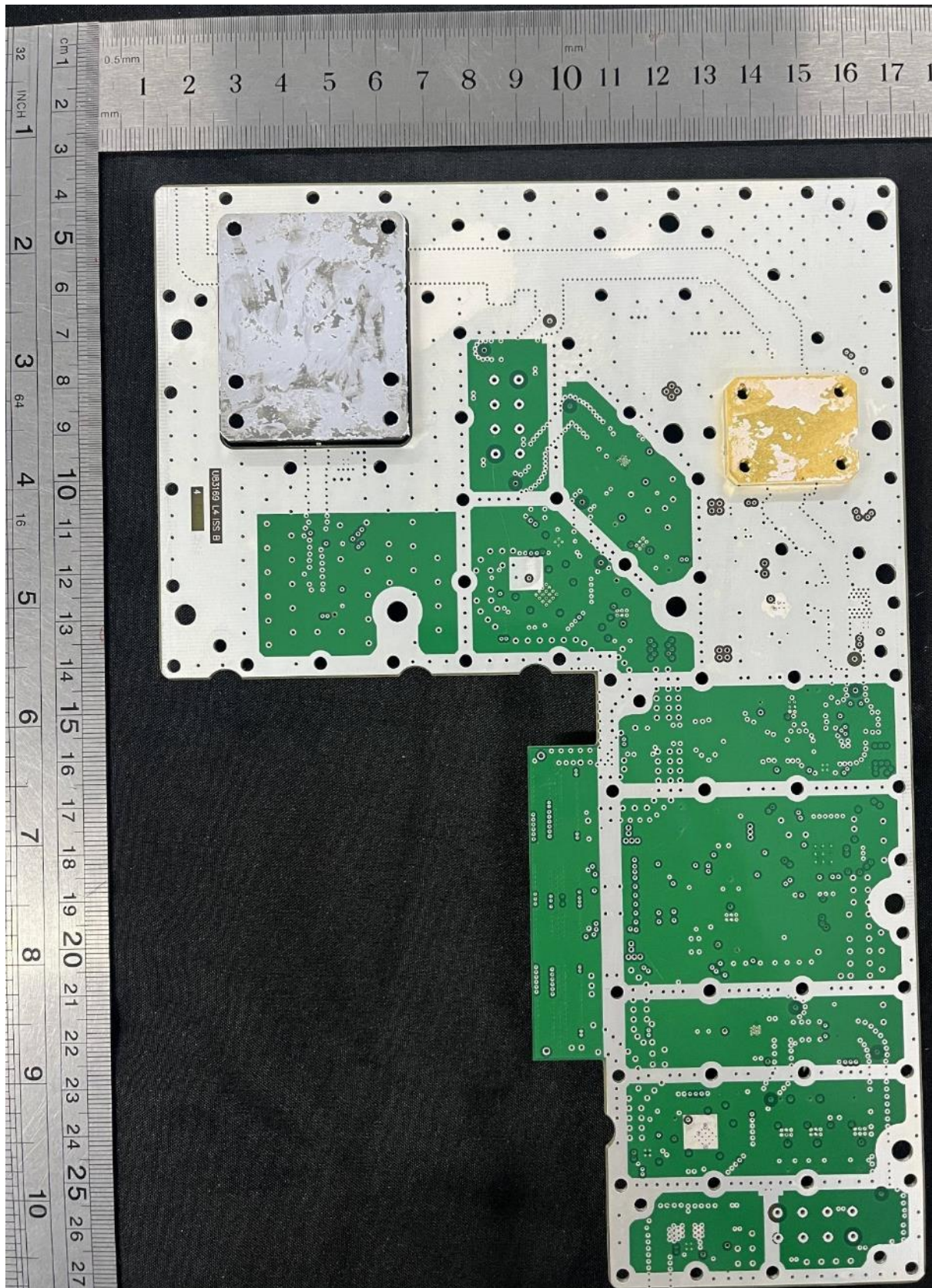
DRFM ASSEMBLY – Top cover off, internal screen off.



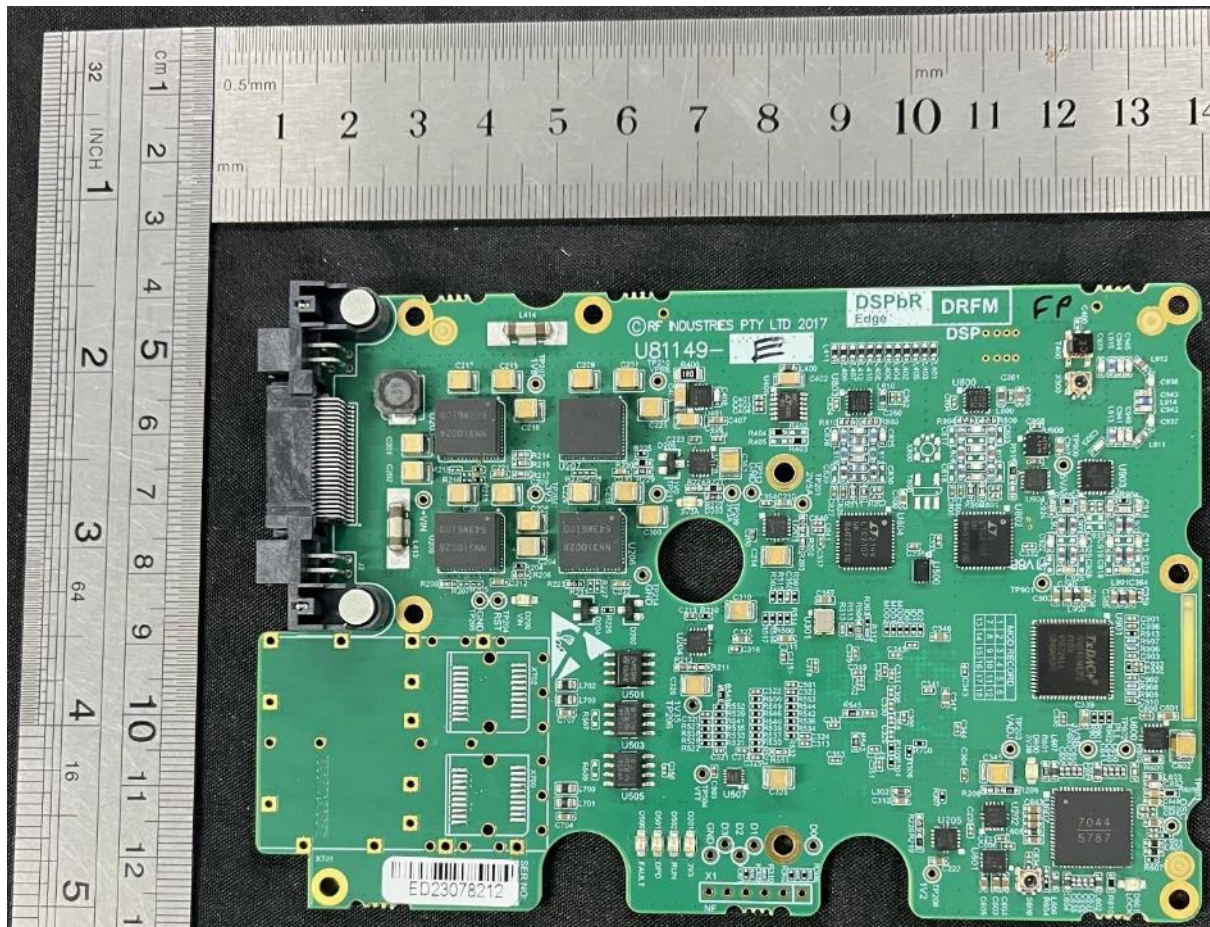
DRFM ASSEMBLY – RF PCB assembly, in chassis, Top view.



DRFM RF PCB ASSEMBLY – RF PCB assembly, Bottom view.



DRFM - DSP PCB ASSEMBLY, Top view.



DRFM - DSP PCB ASSEMBLY, Bottom view.

