

Welcome

Thank you for selecting this product! Your RF wireless optical mouse uses a newly developed RF wireless technology 27MHz that replaces the traditional wired mouse. You can use your wireless optical mouse freely and improve your efficiency and enjoy your beautiful life from the high technology. The receiver of this mouse can be put into its transmitter, and it is an outstanding design.

Product Features

1. Radio frequency 27MHz, enjoy your freely wireless space
2. It has 256 ID code, there is no interference even many mice being used at the same time.
3. Automatically save power sleeping functions, battery life be prolonged.
4. 5 buttons and free definition functions .

Systems Compatibility

IBM PC and Win 95/98/Me/2000/XP, Vista, No need driver

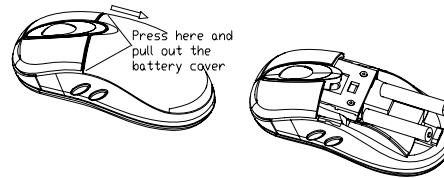
The Steps of Install Battery

1. Please prepare for two PCS new AA alkaline batteries
2. Press the two sides of the mouse transmitter and pull the battery cover rearward (Please see the reference picture)
3. Please insert the batteries correctly according to the polarity marks of the battery grooves.
4. Pull the battery covers forward, when you hear "crack" sound

which shows the battery cover is locked successfully.。

Receiver Installation

1. please use extended cable, and put the receiver and transmitter on one desktop, in this way, you may have higher working efficiency.



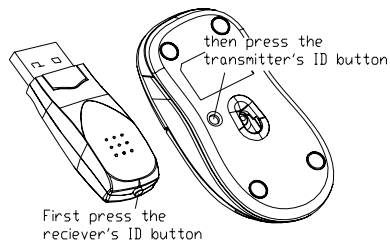
2. If you use PS/2 connector, please use the USB to PS/2 adaptor and connect with the connector before your computer start-up For laptop, you may connect the receiver directly with the USB connector.

ID Setup

1. Please move the mouse near to the receiver
2. press the ID button I the front of the receiver,the light of the receiver begins to flicker.
3. Press the ID button of the mouse bottom with some hard and acuate object within 10 seconds, the receiver light will flash very fast, a few seconds later it will be on which shows it is

successfully to finish the digital transmission between the mouse and the receiver. You may start to use it.

4. Working distance: within 1-2 m.

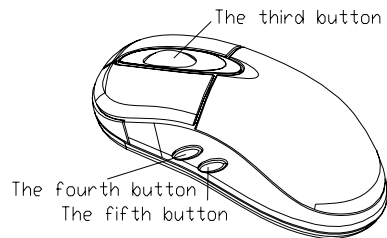


user-defined buttons

after the installation of drive program, users can self define the buttons freely, as long as to press the button predefined, we can turn on the preset function. before use self defined buttons, please install drive program first, so that we can use software to define functions

Installation of drive program

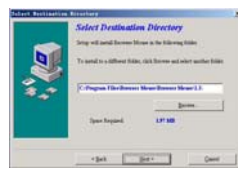
put the drive program disk into the CD-room, unfold the disk and run the file named setup.exe. The system will run files automatically and appear the picture below



click "next" button



choose "5 Button Mouse" and click the "next" button



the system requires the address of installation, we can choose windows default and then click "next" button



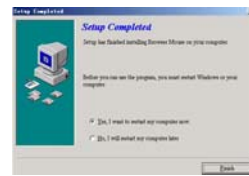
system requires the catalog of installation, click "next" to use the windows default




information of copy files appears, click "next" to copy files



when copy finished, system requires to restart PC. choose "finish" and PC begins to restart



settings of self-defined buttons

after PC restarted, there is a  icon appeared in taskbar, double click this icon and enter the picture of self-definition for scroll wheel and buttons



as this picture show,the upside is for setting mode of scroll wheel,the underside is for setting speed of scroll wheel

System default(Intelli-Mouse) mode

Enhanced scroll mode

Scroll ** lines per scroll unit

Scroll one page scroll unit

Click "button setting"and enter the picture below



in this setting,the third,forth,fifth buttons can be defined freely,click the little triangle at the right side can select functions below

Auto scroll

Back space

Close Application

Connect To Internet

Control Lock

Control Panel

Copy

Cut

Delete

Double click

Down

Drag Lock

End

Enter

Esc

Explorer

F1~F10

Find computer

Find File

Home

Horizontal wheel

Internet Explorer Backward

Internet Explorer forward

Launch Default Browser

Launch Default E-mail

Left

Maximize Window

Middle Button

Minimize All Windows

Minimize windows

Page Down

Page Up

Paste

Redo

Right

Run

Shift Lock
 Space
 Start Menu
 System Default
 System Help
 System Property
 Tab
 Undo
 Undo Minimize All Windows
 Universal Scroll
 Universal Zoom
 Up

Attention Please

- 1, Please don't make the mouse far away from the receiver in order to work more smoothly.
- 2, You'd better use the mouse on the white desk, in this way the batteries can be used longer time. Please remove the batteries if the mouse will not be used for a long time.
- 3, This mouse with save power sleeping functions, please press any key or scroll the wheel to wake up the mouse when it is sleeping.
- 4, you want to take off the mouse power, please continue to press the ID switch of the mouse bottom over 3 seconds. If you want to take on the power, please click the ID switch once again.
- 5, The optical mouse will not work freely on a smooth desk ,glass, any reflecting surface, 3D mouse pad.
6. No need to check the digital connection within 10 seconds when

change the batteries, if more than that please according to the above way to re-operate.

Caution

Any changes or modifications not expressly approved by the party responsible for compliance could void the user's authority to operate the equipment.

Note

FCC STATEMENT

1. This device complies with Part 15 of the FCC Rules. Operation is subject to the following two conditions:

- (1) This device may not cause harmful interference.
 - (2) This device must accept any interference received, including interference that may cause undesired operation.
2. Changes or modifications not expressly approved by the party responsible for compliance could void the user's authority to operate the equipment.

NOTE: This equipment has been tested and found to comply with the limits for a Class B digital device, pursuant to Part 15 of the FCC Rules. These limits are designed to provide reasonable protection against harmful interference in a residential installation.

This equipment generates uses and can radiate radio frequency energy and, if not installed and used in accordance with the instructions, may cause harmful interference to radio communications. However, there is no guarantee that interference will not occur in a particular installation. If this equipment does cause harmful interference to radio or television reception, which can be determined by turning the equipment off and on, the user is encouraged to try to correct the interference by one or more of the following measures:

? Reorient or relocate the receiving antenna.

? Increase the separation between the equipment and receiver.

? Connect the equipment into an outlet on a circuit different from that to which the receiver is connected.

? Consult the dealer or an experienced radio/TV technician for help.