

LOOXCIE

Be there.

Get Started

- 1 Charge Looxcie
- 2 Download the Looxcie App
- 3 Pair Looxcie to Your Smartphone
- 4 Adjust the Fit of Looxcie
- 5 Operate Looxcie as a Camcorder
- 6 Operate Looxcie as a Bluetooth® Headset
- 7 Review Looxcie Controls



1 Charge Looxcie

Fully charge Looxcie before use. The Looxcie Indicator light will flash green while charging and remain green when fully charged.

Charge by Plugging into a Power Outlet

1. Plug the USB Power Adapter into a power outlet
2. Plug the USB Cable into the USB Socket on the USB Power Adapter
3. Plug the USB Cable into the Micro USB Connector on Looxcie, pushing firmly to establish a complete connection



Charge by Plugging into a PC

1. Plug the USB Cable into the USB Socket on your PC
2. Plug the USB Cable into the Micro USB Connector on Looxcie, pushing firmly to establish a complete connection



2 Download the Looxcie App

You must use the Looxcie App to view, edit, and share your Looxcie moments.

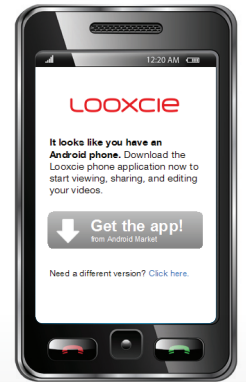
The Looxcie App turns your smartphone into a controller so you can:

- Use your smartphone as a viewfinder
- Review stored video and clips
- Edit and create video clips of various lengths
- Share clips via Facebook, YouTube, and more

Download the Looxcie App

1. Turn on your smartphone
2. Open the web browser and link to www.looxcie.com/m
3. Follow instructions to download and install the App on your smartphone

Visit www.looxcie.com to register and learn more about all the ways you can use the Looxcie App to capture and share all of your important Looxcie moments.



3 Pair Looxcie to Your Smartphone

You must pair Looxcie to your Bluetooth®-enabled smartphone. The first time you turn on Looxcie, it automatically enters pairing mode.

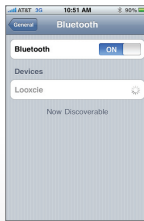
Pair Looxcie to Smartphone

1. Press the Power/Call button on Looxcie for three seconds
2. Confirm that the green Indicator light and the red Video On light are flashing, indicating pairing mode is active
3. Turn on phone's Bluetooth® feature ("Settings/Tools" on most phones)
4. Select "Looxcie" when phone displays "Search for Devices" results
5. When the pairing is successful, the red Video On light will turn off and the green Indicator light will flash more slowly
6. See your phone's user guide for more information on connecting to Bluetooth® devices

Pair Looxcie Manually

If Looxcie does not automatically enter pairing mode or you want to pair an additional smartphone with your camcorder, you'll need to pair it manually.

1. Simultaneously hold and press the Volume and Power/Call buttons until the green Indicator light and red Video On light start flashing
2. If prompted for PIN or passkey, enter "0000"



4 Adjust the Fit of Looxcie

Choose Your Earbud

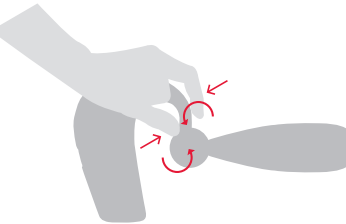
Looxcie comes with a medium earbud installed on the earbud post. If it does not fit securely and comfortably, replace it with the small or large earbuds provided.

1. Gently pull the earbud off the earbud post to remove
2. Press the new earbud firmly on the post

Adjust Bendable Earloop

1. Decide whether you'll wear Looxcie on your right or left ear; turn the 180° Rotating Earpiece to wear it on your left ear
2. Put the Bendable Earloop around your ear – it will hold its shape and keep the camcorder stable
3. Twist and shape it until it fits comfortably and securely

Note: Don't hesitate to exert pressure on the earloop as you twist and turn it. It's designed to withstand extensive twisting and turning.



5 Operate Looxcie as a Camcorder

Video Looxcie Moments

1. Turn on Looxcie (Indicator light will flash green)
2. Press the Video button (Video On light will glow red)
3. Launch the Looxcie App on your smartphone
4. Look at viewfinder on phone to confirm video is level
5. If not level, rotate camcorder boom and twist and bend earloop until Looxcie is filming level at your line of sight
6. Join the action! (Looxcie will video everything you see)
7. Press the Video button to stop filming

Note: For best results, use the viewfinder on your phone to confirm that you're videoing what you see.



Create Instant Clips

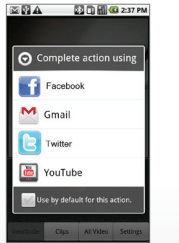
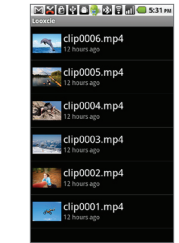
Looxcie stores more than five hours of video.

- Press and release the Instant Clip button to save a clip of the last thirty seconds
- Press and hold the Instant Clip button for three seconds to create and immediately share a thirty-second clip with a pre-designated recipient (requires setup of Instant Share recipients in Looxcie App)
- Create longer clips by running the Looxcie App on your smartphone – you can view, edit, and create clips of any length from stored video

Share Looxcie Moments

Once you create a clip, use your smartphone to email or post it to social media sites.

Visit www.looxcie.com for more information on how to use the Looxcie App to save and share your Looxcie moments.



6 Operate Looxcie as a Bluetooth® Headset

Looxcie is more than a wearable camcorder; it's also a Bluetooth® headset you can use to make and receive calls once you've paired it with your smartphone.

To use Looxcie as a Bluetooth® headset, loop it over your ear and press the Power/Call button to turn it on.

Headset Controls

Answer a Call

Press the Power/Call button

End a Call

Press the Power/Call button or use your phone

Make a Call

Enter a phone number on your phone and press "Send" – the call will transfer to Looxcie

Redial

Press and hold the Volume button

Change the Volume

Click the Volume button repeatedly until you reach the desired volume

7 Review Looxcie Controls



LOOXCIE

For more information, visit www.looxcie.com.

Designed in Silicon Valley.
©2010 Looxcie, Inc. All rights reserved.
US and international patents pending.

Looxcie is a registered trademark of Looxcie, Inc.
All other trademarks are the property of their respective owners.