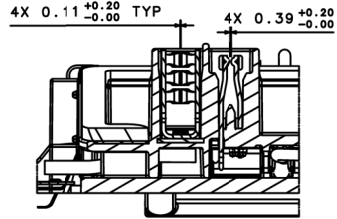
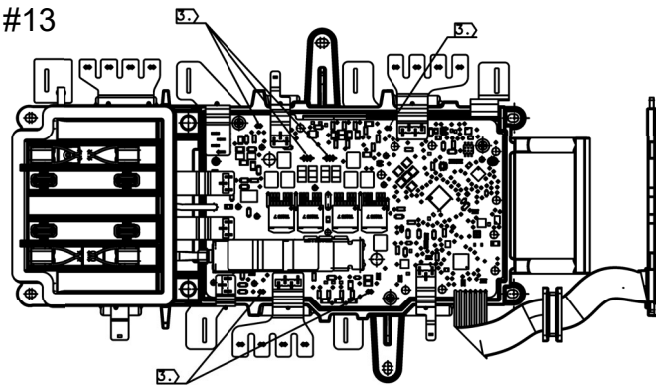


Label Location see note and figure #13

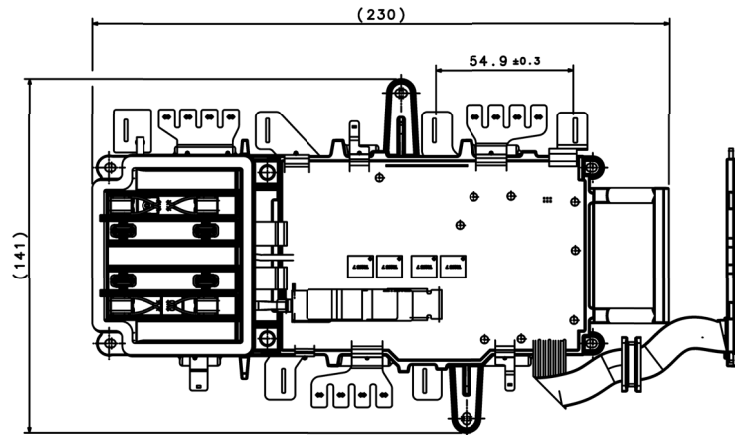


DETAIL B  
SCALE: 2:1

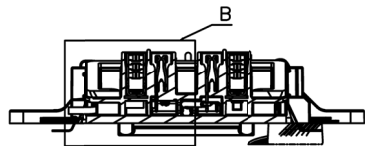


FRONT VIEW

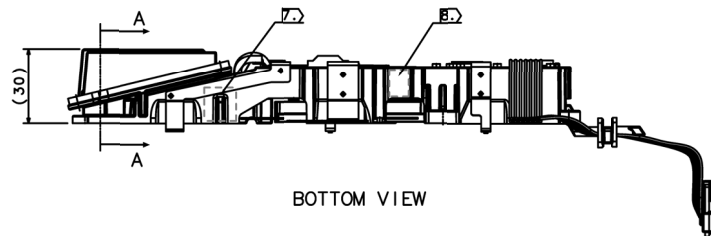
PICTURE



FRONT VIEW



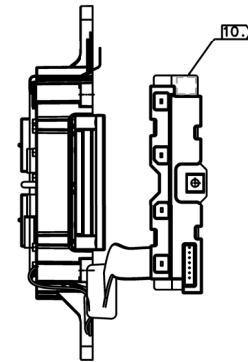
SECTION VIEW A-A



BOTTOM VIEW

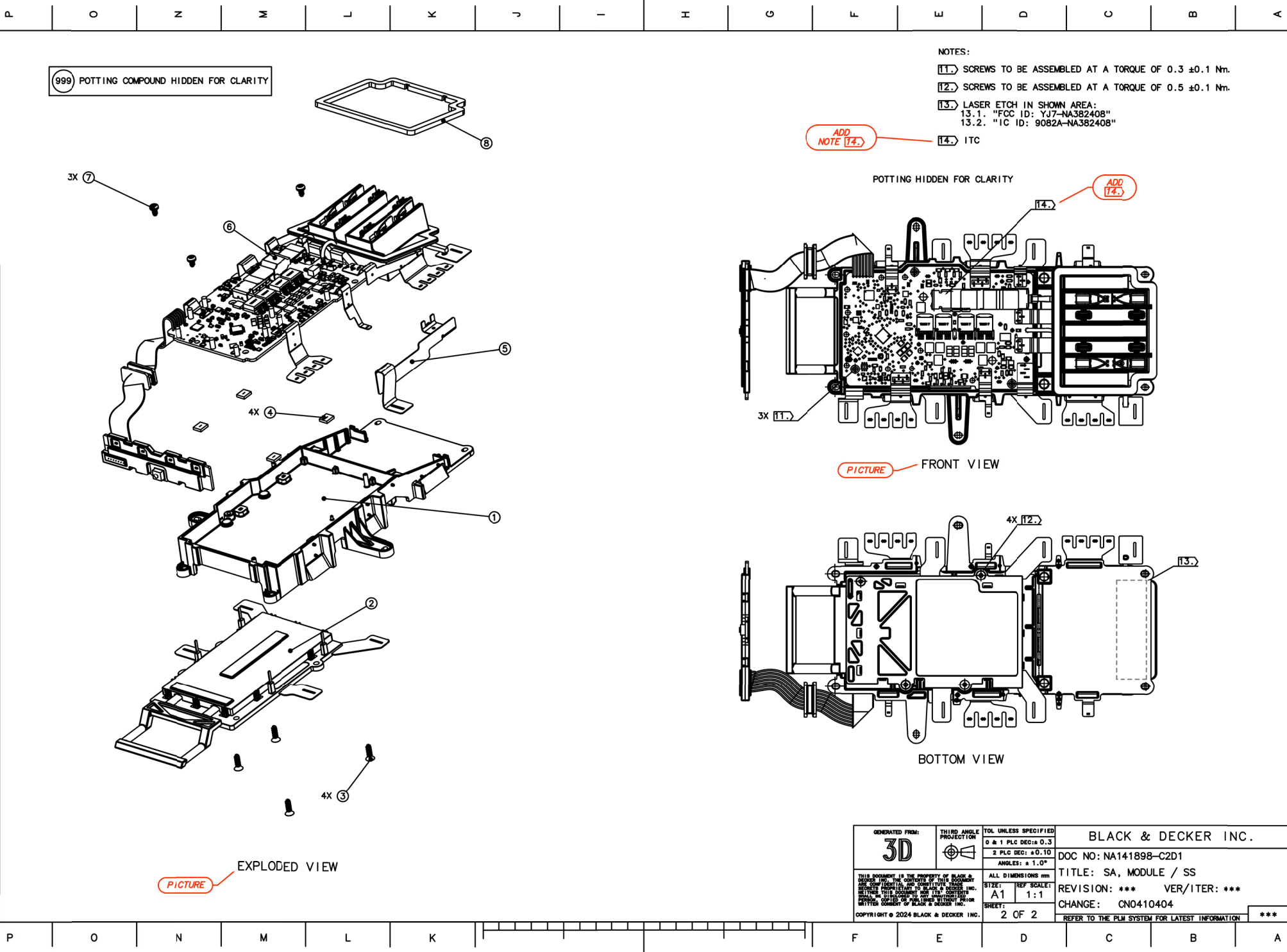
NOTES:

1. ALL MATERIALS MUST COMPLY WITH ES100118.
  2. THIS DRAWING IS BASED ON ONE OR MORE REFERENCE 3D MODELS WHICH DEFINE ANY UNDIMENSIONED FEATURE.
  3. SOLDERED CONNECTIONS; COMPLIANCE REQUIRED TO ES100008.
  4. ALL TINNING AND SOLDERING PROCESSES TO BE LEAD-FREE. USE ONLY MATERIALS IN COMPLIANCE WITH THE LATEST ROHS/WEEE DIRECTIVE. CERTIFICATE SHALL BE ATTACHED ON SAMPLE ANALYSIS REPORT/SAR OR FPI.
  5. FLEX CIRCUITS SHOWN IN BENT STATE.
  6. PART(S) DEFINED BY THIS DRAWING MUST COMPLY WITH SPPAP/PR-00429-DOC AND MUST HAVE AN ESTABLISHED QUALITY INSPECTION PROCESS.
  7. MARK TO INDICATE MODULE PASSED PRE-POTTED FUNCTIONAL TEST. MARKING MUST BE VISUALLY DISTINCT AND IDENTIFYABLE UNDER NORMAL LIGHTING CONDITIONS AT A VISUAL DISTANCE OF NO LESS THAN 20CM.
  8. MARK TO INDICATE MODULE PASSED POST-POTTED FUNCTIONAL TEST. MARKING MUST BE DIFFERENT AND VISUALLY DISTINCT FROM PRE-POTTING FUNCTIONAL TEST PASS INDICATOR. MARKING MUST BE VISUALLY DISTINCT AND IDENTIFYABLE UNDER NORMAL LIGHTING CONDITIONS AT A VISUAL DISTANCE OF NO LESS THAN 20CM.
  9. POTTING COMPOUND (999) ADDED ACCORDING TO SBD ENGINEERING APPROVED PROFILE.
  10. STANLEY BLACK & DECKER PART NUMBER AND DATE CODE TO BE LOCATED ON TOP SURFACE SHOWN VIA DM CODE. MARKING MUST COMPLY WITH EP69.
- NOTES CONTINUE ON SHEET 2.



RIGHT VIEW

GENERATED FROM: <b>3D</b>	THIRD ANGLE PROJECTION	TOL UNLESS SPECIFIED 0 & 1 PLC DEC: ±0.3 2 PLC DEC: ±0.10 ANGLES: ±1.0°	BLACK & DECKER INC.
THIS DOCUMENT IS THE PROPERTY OF BLACK & DECKER INC. THE CONTENTS OF THIS DOCUMENT ARE CONFIDENTIAL AND NOT TO BE REPRODUCED OR DISCLOSED TO ANY OTHER PARTY WITHOUT THE WRITTEN PERMISSION OF BLACK & DECKER INC. COPYRIGHT © 2024 BLACK & DECKER INC.			DOC NO: NA141898-C2D1
ALL DIMENSIONS IN SIZE: A1 REF SCALE: 1:1 SHEET: 1 OF 2			TITLE: SA, MODULE / SS REVISION: *** VER/ITER: *** CHANGE: CN0410404
			REFER TO THE PLM SYSTEM FOR LATEST INFORMATION ***



999 POTTING COMPOUND HIDDEN FOR CLARITY

- NOTES:
- [11] SCREWS TO BE ASSEMBLED AT A TORQUE OF 0.3 ±0.1 Nm.
  - [12] SCREWS TO BE ASSEMBLED AT A TORQUE OF 0.5 ±0.1 Nm.
  - [13] LASER ETCH IN SHOWN AREA:  
13.1. "FCC ID: YJ7-NA382408"  
13.2. "IC ID: 9082A-NA382408"
  - [14] ITC

POTTING HIDDEN FOR CLARITY

PICTURE FRONT VIEW

BOTTOM VIEW

PICTURE EXPLODED VIEW

GENERATED FROM: <b>3D</b>		THIRD ANGLE PROJECTION	TOL. UNLESS SPECIFIED 0 & 1 PLC DEC: ±0.3 2 PLC DEC: ±0.10 ANGLES: ±1.0°	BLACK & DECKER INC.	
THIS DOCUMENT IS THE PROPERTY OF BLACK & DECKER INC. THE CONTENTS OF THIS DOCUMENT ARE CONFIDENTIAL AND NOT TO BE REPRODUCED OR DISCLOSED TO ANY OTHER PARTY WITHOUT THE WRITTEN CONSENT OF BLACK & DECKER INC. COPYRIGHT © 2024 BLACK & DECKER INC.			ALL DIMENSIONS IN: SIZE: A1 REF SCALE: 1:1 SHEET: 2 OF 2	DOC NO: NA141898-C2D1 TITLE: SA, MODULE / SS REVISION: *** VER/ITER: *** CHANGE: CN0410404 REFER TO THE PLM SYSTEM FOR LATEST INFORMATION	