

ASSEMBLY INSTRUCTIONS & USER GUIDE

IONFLOW 50 AIR PURIFIER

ENGLISH

DEUTSCH

FRANÇAIS

ESPAÑOL

ITALIANO

NEDERLANDS

SVENSKA

DANSK

NORSK

SUOMI

العربية

РУССКИЙ

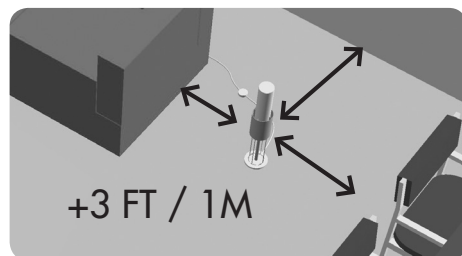
日本語

中文



SAFETY INSTRUCTIONS

- Please read through the instructions before using this air purifier and keep this instruction manual in a safe place.
- This appliance is not intended for use by children and persons with reduced physical, sensory or mental capabilities, or lack of experience and knowledge of the product, unless they are supervised and have been given instructions concerning use of the appliance by a person responsible for their safety.
- Children should be supervised to ensure that they do not play with the appliance.
- Ensure that the connected voltage supply is the same as marked on the rating label.
- The air purifier is an electrical appliance and should be treated as such. Be particularly careful to avoid accidents during installation, use, and maintenance.
- The air purifier should be installed and cleaned by adults.
- The air purifier should be installed according to the instructions, at the correct distance from a wall and placed on a secured and stable surface. If incorrectly placed, the air purifier may fall and cause injury to people or damage to its surroundings.
- We recommend that you place the Style/Surface/Sky models at least 3 feet (1 meter) away from all walls and furniture and that you hang the Sky model 1.5 feet (0.5 meter) down from the ceiling. If these recommendations are not followed, nearby walls and/or furniture may become somewhat dirty.



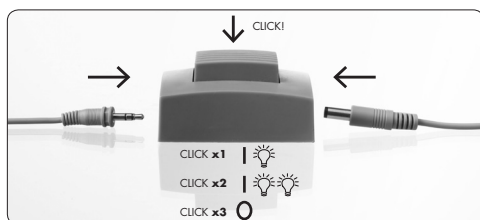
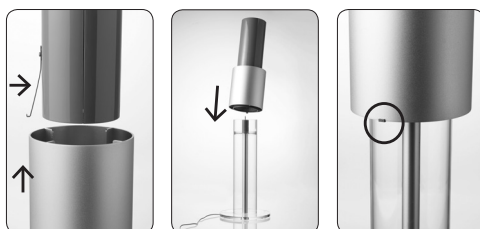
- Never use the air purifier with a damaged power cable, damaged transformer or damaged electronics.
- If the main lead is damaged it must be replaced by a qualified person.
- To prevent from electric shock, fire, personal injury and any other hazard do not immerse the air purifier including the transformer into water or any other liquid.
- Do not place the air purifier or cable near a heat source.
- Do not use the air purifier outdoors.

- Do not use the air purifier in damp rooms.
- Do not use the air purifier in conjunction with coloured or oil-based candles, as they emit soot which can become attached to walls and furniture.
- You may experience a small electric discharge when touching the collector. This is harmless! If you find this discharge unpleasant, unplug the appliance before handling it and use the protective guard when the air purifier is on. Note that the protective guard is optional and not necessary from a safety perspective.

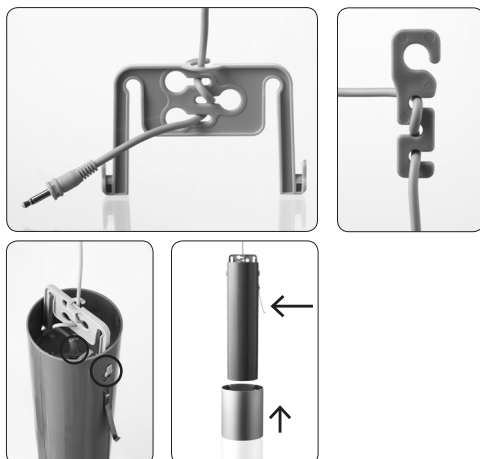
Note: LightAir cannot be held responsible for any damage caused as a result of failure to follow the recommendations.

ASSEMBLY INSTRUCTIONS

IONFLOW 50 STYLE & SURFACE



IONFLOW 50 SKY



CLEANING AND MAINTENANCE

- You MUST disconnect the power supply and turn off the air purifier before cleaning.
- Do NOT wash the collector in the dishwasher.
- Do NOT use cleaning products that contain alcohol solutions, ammonia, or alkaline substances, as these products may damage the air purifier.
- The collector should be cleaned approx. once every two weeks or when needed. The collector may require more frequent cleaning if used in highly contaminated environments.

CLEANING THE COLLECTOR:

1. Clean the collector with washing-up liquid, water, and a soft sponge.
2. Dry the collector with a dish towel.
3. Put the collector back on the ion generator according to the above instructions.

If you have followed the above instructions but the collector is still not clean, try the following:

1. Spray detergent onto the collector and let it work for 5 minutes.
2. Use a damp sponge and rub any remaining spots until they disappear.
3. Dry the collector with a dish towel and place it back on the ion generator according to the above instructions.
4. Repeat the above procedure if necessary.

CLEANING THE ION GENERATOR, CORONA NEEDLES AND ACRYLIC STAND:

- Once every four months you may need to carefully clean the fragile corona needles. Use a small brush (e.g. a toothbrush) and carefully brush away the thin layer of white lime scale and dirt which may have become attached to the needles. Do not use pressure or water when you clean the needles.
- Clean the ion generator and the acrylic stand with a damp cloth or sponge. Wipe clean and rub away any remaining dirt and dry with a towel. Do not allow the top and bottom of the ion generator to come into contact with water and be careful with the corona needles.

PRODUCT DESCRIPTION

IONFLOW 50 STYLE & 50 SURFACE:

- 1 ion generator (above= 3 corona needles, below=outlet and metal hook)
- 1 collector
- 1 acrylic stand
- 1 switch
- 1 transformer
- 8 decorative lights (4 in the appliance & 4 extra)
- 1 protective guard (32 slots and 2 assembly rings)

IONFLOW 50 SKY:

- 1 ion generator (above=outlet and metal hook, below=3 corona needles)
- 1 collector
- 1 extension lead
- 1 transformer
- 1 pressure relief device
- 1 pressure relief hook

ACCESSORIES
IONFLOW 50
STYLE & SURFACE:

- 8 Decorative lights
- Protective guard



Warning: Changes or modifications to this unit not expressly approved by the party responsible for compliance could void the user's authority to operate the equipment.

NOTE: This equipment has been tested and found to comply with the limits for a Class B ISM equipment, pursuant to Part 18 of the FCC Rules. These limits are designed to provide reasonable protection against harmful interference in a residential installation. This equipment generates, uses, and can radiate radio frequency energy and, if not installed and used in accordance with the instructions, may cause harmful interference to radio communications. However, there is no guarantee that interference will not occur in a particular installation. If this equipment does cause harmful interference to radio or television reception, which can be determined by turning the equipment off and on, the user is encouraged to try to correct the interference by one or more of the following measures:

- Reorient or relocate the receiving antenna.
- Increase the separation between the equipment and receiver.
- Connect the equipment into an outlet on a circuit different from that to which the receiver is connected.
- Consult the dealer or an experienced radio TV technician for help.



CERTIFIED ACCORDING TO UL 867

This appliance complies with the European Directives for electromagnetic compatibility (EMC) 2004/108/EC and its revisions, as well as Low Voltage Directive (LVD) 2006/95/EC and its revisions.

This appliance complies with the WEEE-Directive 2002/96/EC on the disposal of electrical and electronic equipment (WEEE).

This product should not be disposed with other household wastes throughout the EU. To prevent possible harm to the environment or human health from uncontrolled waste disposal, recycle it responsibly to promote the sustainable reuse of material resources. To return your used device, please use the return and collection systems or contact the retailer where the product was purchased. They can take this product for environmental safe recycling.

Electrical rating: 12VDC (with class II AC/DC adaptor,
input: 100 – 240VAC 50/60Hz 0.4A max.,
output: 12VDC 600 – 800mA)

