



Shenzhen CTL Electromagnetic Technology Co., Ltd.  
Tel: +86-755-89486194 Fax: +86-755-89486194-805

## FCC PART 15 SUBPART C TEST REPORT

### FCC Part 15.249

Report Reference No.....: CTL1212121567-WF

Compiled by

( position+printed name+signature)...: File administrators Jacky Chen

Jacky Chen

Name of the organization performing the tests

Test Engineer Tracy Qi

Tracy Qi

( position+printed name+signature)...:

Approved by

( position+printed name+signature)...: Manager Tracy Qi

Tracy Qi

Date of issue.....: Jan. 26, 2013

Representative Laboratory Name : Shenzhen CTL Electromagnetic Technology Co., Ltd.

Address.....: Zone B, 4/F, Block 20, Guangqian Industrial Park, Longzhu Road, Nanshan, Shenzhen 518055 China.

Test Firm.....: Bontek Compliance Testing Laboratory Ltd

Address.....: 1/F, Block East H-3, OCT Eastern Ind. Zone, Qiaocheng East Road, Nanshan, Shenzhen, China

Applicant's name.....: Shenzhen Riitek Technology Co., Ltd

Address.....: A1-4, A Zone, Baoyunda Logistic Center, Avenue Xixiang, BaoAn District, Shenzhen, China

#### Test specification:

Standard.....: FCC Part 15.249: Operation within the bands 920-928 MHz, 2400-2483.5 MHz, 5725-5850 MHz and 24.0 - 24.25 GHz.

TRF Originator.....: Shenzhen CTL Electromagnetic Technology Co., Ltd.

Master TRF.....: Dated 2011-01

**Shenzhen CTL Electromagnetic Technology Co., Ltd. All rights reserved.**

This publication may be reproduced in whole or in part for non-commercial purposes as long as the Shenzhen CTL Electromagnetic Technology Co., Ltd. is acknowledged as copyright owner and source of the material. Shenzhen CTL Electromagnetic Technology Co., Ltd. takes no responsibility for and will not assume liability for damages resulting from the reader's interpretation of the reproduced material due to its placement and context.

Test item description .....: RT-MWK13 2.4G Air Mouse Keyboard

Trade Mark .....: /

Models/Type reference.....: RT-K13, RII-K13, RiiminiK13, ZWP-51013

Modulation .....: GFSK

Work Frequency.....: 2403 MHz~2479 MHz

Antenna Type.....: PCB Antenna

FCC ID .....: YIZRT-K13

Result.....: Positive

**TEST REPORT**

<b>Test Report No. :</b> CTL1212121567-WF	Jan. 26, 2013 Date of issue
---	--------------------------------

**Equipment under Test** : RT-MWK13

**Model /Type** : RT-K13

**Listed Models** : RII-K13,RiiminiK13,ZWP-51013

**Applicant** : Shenzhen Riitek Technology Co., Ltd

**Address** : A1-4, A Zone, Baoyunda Logistic Center, Avenue Xixiang,  
BaoAn District, Shenzhen, China

**Manufacturer** Shenzhen Riitek Technology Co., Ltd

**Address** A1-4, A Zone, Baoyunda Logistic Center, Avenue Xixiang,  
BaoAn District, Shenzhen, China

<b>Test Result</b> according to the standards on page 4:	<b>Positive</b>
--	-----------------

The test report merely corresponds to the test sample.

It is not permitted to copy extracts of these test result without the written permission of the test laboratory.

## Contents

<b>1. TEST STANDARDS .....</b>	<b>4</b>
<b>2. SUMMARY .....</b>	<b>5</b>
2.1. General Remarks .....	5
2.2. Equipment Under Test .....	5
2.3. Short description of the Equipment under Test (EUT) .....	5
2.4. EUT operation mode .....	5
2.5. EUT configuration .....	6
2.6. Related Submittal(s) / Grant (s) .....	6
2.7. Modifications .....	6
<b>3. TEST ENVIRONMENT .....</b>	<b>7</b>
3.1. Address of the test laboratory .....	7
3.2. Test Facility .....	7
3.3. Environmental conditions .....	7
3.4. Configuration of Tested System .....	7
3.5. Statement of the measurement uncertainty .....	8
3.6. Equipments Used during the Test .....	8
<b>4. TEST CONDITIONS AND RESULTS .....</b>	<b>9</b>
4.1. Conducted Emissions Test .....	9
4.2. Radiated Emission Test .....	12
4.3. Band Edge Measurement .....	17
<b>5. ANTENNA REQUIREMENT .....</b>	<b>21</b>
<b>6. TEST SETUP PHOTOS OF THE EUT .....</b>	<b>22</b>
<b>7. EXTERNAL AND INTERNAL PHOTOS OF THE EUT .....</b>	<b>24</b>

## **1. TEST STANDARDS**

The tests were performed according to following standards:

[\*\*FCC Rules Part 15.249:\*\*](#) Operation within the bands 902 - 928 MHz, 2400 - 2483.5 MHz, 5725 - 5875 MHz, and 24.0 - 24.25 GHz.

[\*\*ANSI C63.4-2003\*\*](#)



## 2. SUMMARY

### 2.1. General Remarks

Date of receipt of test sample : Dec. 17, 2012

Testing commenced on : Dec. 18, 2012

Testing concluded on : Jan. 09, 2013

### 2.2. Equipment Under Test

#### Power supply system utilised

Power supply voltage : ☐ 120V / 60 Hz ☐ 115V / 60Hz  
☐ 12 V DC ☐ 24 V DC  
☒ Other (specified in blank below)  
 DC 3.7V from battery

### 2.3. Short description of the Equipment under Test (EUT)

The EUT is a 2.4GHz Air Mouse Keyboard, work at 2403~2479 MHz.

Channel List:

<b>1CH</b>	2403 GHZ	<b>14CH</b>	2429 GHZ	<b>27CH</b>	2455 GHZ
<b>2CH</b>	2405 GHZ	<b>15CH</b>	2431 GHZ	<b>28CH</b>	2457 GHZ
<b>3CH</b>	2407 GHZ	<b>16CH</b>	2433 GHZ	<b>29CH</b>	2459 GHZ
<b>4CH</b>	2409 GHZ	<b>17CH</b>	2435 GHZ	<b>30CH</b>	2461 GHZ
<b>5CH</b>	2411 GHZ	<b>18CH</b>	2437 GHZ	<b>31CH</b>	2463 GHZ
<b>6CH</b>	2413 GHZ	<b>19CH</b>	2439 GHZ	<b>32CH</b>	2465 GHZ
<b>7CH</b>	2415 GHZ	<b>20CH</b>	2441 GHZ	<b>33CH</b>	2467 GHZ
<b>8CH</b>	2417 GHZ	<b>21CH</b>	2443 GHZ	<b>34CH</b>	2469 GHZ
<b>9CH</b>	2419 GHZ	<b>22CH</b>	2445 GHZ	<b>35CH</b>	2471 GHZ
<b>10CH</b>	2421 GHZ	<b>23CH</b>	2447 GHZ	<b>36CH</b>	2473 GHZ
<b>11CH</b>	2423 GHZ	<b>24CH</b>	2449 GHZ	<b>37CH</b>	2475 GHZ
<b>12CH</b>	2425 GHZ	<b>25CH</b>	2451 GHZ	<b>38CH</b>	2477 GHZ
<b>13CH</b>	2427 GHZ	<b>26CH</b>	2453 GHZ	<b>39CH</b>	2479 GHZ

Power Range: -5dBm~0dBm

For more details, refer to the user's manual of the EUT.

Serial number: Prototype

### 2.4. EUT operation mode

Test Mode(TM)	Description	Remark
TM1	Bottom Channel Transmitting	/
TM2	Middle Channel Transmitting	/
TM3	Top Channel Transmitting	/
TM4	Charging	USB power by PC

The field strength of radiation emission was measured in the following position: EUT stand-up position (Y axis), lie-down position (X, Z axis).

The following data show only with the worst case setup.

The worst case of Y axis was reported.

Based on client request, all normal using modes of the normal function were tested but only the worst test data of the worst mode is reported by this report.



## 2.5. EUT configuration

The following peripheral devices and interface cables were connected during the measurement:

o - supplied by the manufacturer

● - supplied by the lab

● Notebook PC

Manufacturer : DELL

Model No. : PP26L

## 2.6. Related Submittal(s) / Grant (s)

This submittal(s) (test report) is intended for FCC ID: **YIZRT-K13** filing to comply with Section 15.249 of the FCC Part 15, Subpart C Rules.

## 2.7. Modifications

No modifications were implemented to meet testing criteria.



### **3. TEST ENVIRONMENT**

#### **3.1. Address of the test laboratory**

Bontek Compliance Testing Laboratory Ltd  
1/F, Block East H-3, OCT Eastern Ind. Zone, Qiaocheng East Road, Nanshan, Shenzhen, China

The sites are constructed in conformance with the requirements of ANSI C63.7, ANSI C63.4 (2003) and CISPR Publication 22.

#### **3.2. Test Facility**

The test facility is recognized, certified, or accredited by the following organizations:

##### **IC Registration No.: 7631A**

The 3m alternate test site of Bontek Compliance Testing Laboratory Ltd EMC Laboratory has been registered by Certification and Engineer Bureau of Industry Canada for the performance of with Registration NO.: 7631A on March, 2011.

##### **FCC-Registration No.: 338263**

Bontek Compliance Testing Laboratory Ltd EMC Laboratory has been registered and fully described in a report filed with the (FCC) Federal Communications Commission. The acceptance letter from the FCC is maintained in our files. Registration 338263, March 24, 2008.

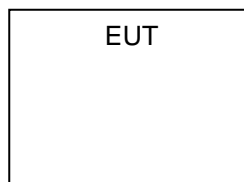
#### **3.3. Environmental conditions**

During the measurement the environmental conditions were within the listed ranges:

Temperature:	<u>15-35 ° C</u>
Humidity:	<u>30-60 %</u>
Atmospheric pressure:	<u>950-1050mbar</u>

#### **3.4. Configuration of Tested System**

**Fig. 2-1 Configuration of Tested System**



### 3.5. Statement of the measurement uncertainty

The data and results referenced in this document are true and accurate. The reader is cautioned that there may be errors within the calibration limits of the equipment and facilities. The measurement uncertainty was calculated for all measurements listed in this test report acc. to CISPR 16 - 4 „Specification for radio disturbance and immunity measuring apparatus and methods – Part 4: Uncertainty in EMC

Measurements“ and is documented in the Bontek Compliance Testing Laboratory Ltd quality system acc. to DIN EN ISO/IEC 17025. Furthermore, component and process variability of devices similar to that tested may result in additional deviation. The manufacturer has the sole responsibility of continued compliance of the device.

Hereafter the best measurement capability for Bontek laboratory is reported:

Test	Range	Measurement Uncertainty	Notes
Radiated Emission	30~1000MHz	4.10dB	(1)
Radiated Emission	1~26.5GHz	4.32dB	(1)
Conducted Disturbance	0.15~30MHz	3.20dB	(1)

- (1) This uncertainty represents an expanded uncertainty expressed at approximately the 95% confidence level using a coverage factor of  $k=2$ .

### 3.6. Equipments Used during the Test

Item	Test Equipment	Manufacturer	Model No.	Last Cal.	Due. Date
1	EMI Test Receiver	ROHDE & SCHWARZ	ESCI	2012/04/14	2013/04/13
2	Radio Communication Tester	ROHDE & SCHWARZ	CMU200	2012/04/14	2013/04/13
3	Dual Directional Coupler	Agilent	778D	2012/04/14	2013/04/13
4	10dB attenuator	SCHWARZBECK	MTAIMP-136	2012/04/14	2013/04/13
5	Tunable Bandreject filter	K&L	3TNF-800	2012/04/14	2013/04/13
6	Tunable Bandreject filter	K&L	5TNF-1700	2012/04/14	2013/04/13
7	High-Pass Filter	K&L	9SH10-2700/X12750-O/O	2012/04/14	2013/04/13
8	High-Pass Filter	K&L	41H10-1375/U12750-O/O	2012/04/14	2013/04/13
9	Coaxial Cable	Huber+Suhner	AC4-RF-H	2012/04/14	2013/04/13
10	AC Power Supply	IDRC	CF-500TP	2012/04/14	2013/04/13
11	DC Power Supply	IDRC	CD-035-020PR	2012/04/14	2013/04/13
12	RF Current Probe	FCC	F-33-4	2012/04/14	2013/04/13
13	Temperature /Humidity Meter	zhicheng	ZC1-2	2012/04/14	2013/04/13
14	MICROWAVE AMPLIFIER	HP	8349B	2012/04/14	2013/04/13
15	Amplifier	HP	8447D	2012/04/14	2013/04/13
16	SIGNAL GENERATOR	HP	8647A	2012/04/14	2013/04/13
17	Log Periodic Antenna	ELECTRO-METRICS	EM-6950	2012/04/14	2013/04/13
18	Horn Antenna	Schwarzbeck	BBHA9120A	2012/04/14	2013/04/13
19	EMI Test Receiver	R&S	ESPI	2012/04/14	2013/04/13
20	Loop Antenna	ZHINAN	ZN30900A	2012/04/14	2013/04/13
21	Horn Antenna	Schwarzbeck	BBHA9120D	2012/04/14	2013/04/13
22	Horn Antenna	Schwarzbeck	BBHA9170	2012/04/14	2013/04/13



## **4. TEST CONDITIONS AND RESULTS**

### **4.1. Conducted Emissions Test**

#### **TEST CONFIGURATION**



#### **TEST PROCEDURE**

- 1 The equipment was set up as per the test configuration to simulate typical actual usage per the user's manual. The EUT is a tabletop system, a wooden table with a height of 0.8 meters is used and is placed on the ground plane as per ANSI C63.4.
- 2 Support equipment, if needed, was placed as per ANSI C63.4.
- 3 All I/O cables were positioned to simulate typical actual usage as per ANSI C63.4.
- 4 If a EUT received DC power from the USB Port of Notebook PC, the PC's adapter received AC120V/60Hz power through a Line Impedance Stabilization Network (LISN) which supplied power source and was grounded to the ground plane.
- 5 All support equipments received AC power from a second LISN, if any.
- 6 The EUT test program was started. Emissions were measured on each current carrying line of the EUT using a spectrum Analyzer / Receiver connected to the LISN powering the EUT. The LISN has two monitoring points: Line 1 (Hot Side) and Line 2 (Neutral Side). Two scans were taken: one with Line 1 connected to Analyzer / Receiver and Line 2 connected to a 50 ohm load; the second scan had Line 1 connected to a 50 ohm load and Line 2 connected to the Analyzer / Receiver.
- 7 Analyzer / Receiver scanned from 150 KHz to 30MHz for emissions in each of the test modes.
- 8 During the above scans, the emissions were maximized by cable manipulation.

**CONDUCTED POWER LINE EMISSION LIMIT**

For unintentional device, according to § 15.107(a) Line Conducted Emission Limits is as following :

Frequency (MHz)	Maximum RF Line Voltage (dBµV)			
	CLASS A		CLASS B	
	Q.P.	Ave.	Q.P.	Ave.
0.15 - 0.50	79	66	66-56*	56-46*
0.50 - 5.00	73	60	56	46
5.00 - 30.0	73	60	60	50

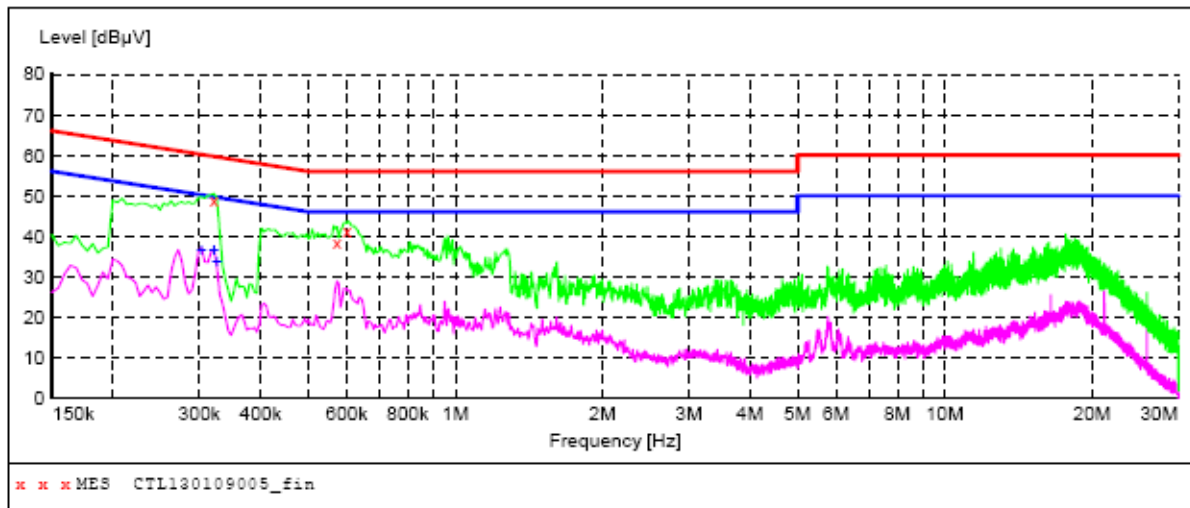
\* Decreasing linearly with the logarithm of the frequency

For intentional device, according to §15.207(a) Line Conducted Emission Limit is same as above table.

**TEST RESULTS**

Test mode: TM4

SCAN TABLE: "Voltage (9K-30M) FIN"  
Short Description: 150K-30M Voltage

**MEASUREMENT RESULT: "CTL130109005\_fin"**

1/9/2013 9:49AM

Frequency MHz	Level dBµV	Transd dB	Limit dBµV	Margin dB	Detector	Line	PE
0.321000	48.80	10.2	60	10.9	QP	L1	GND
0.573000	38.40	10.2	56	17.6	QP	L1	GND
0.600000	41.20	10.2	56	14.8	QP	L1	GND

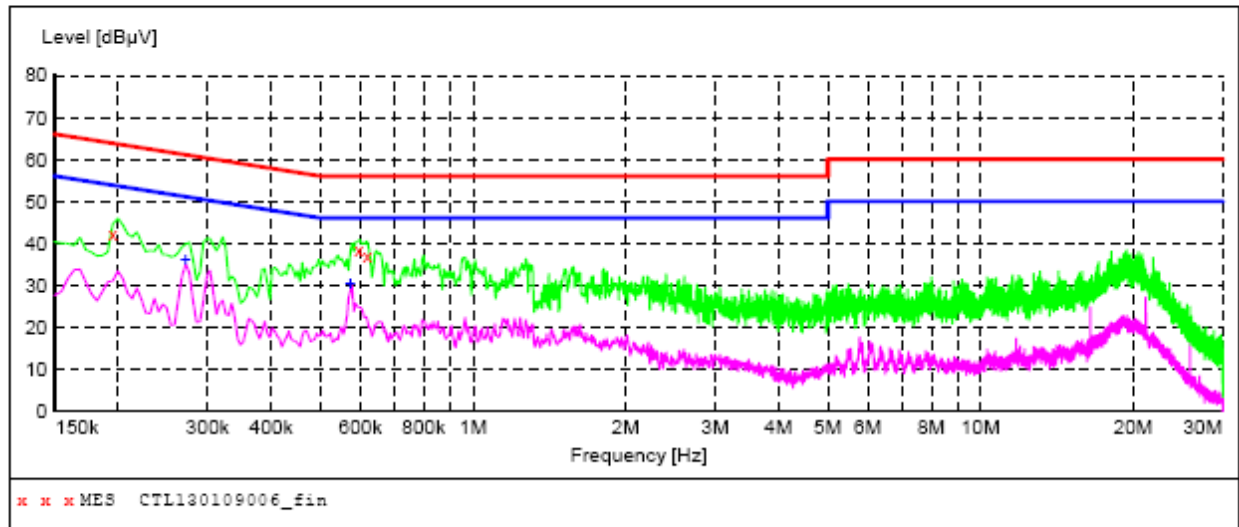
**MEASUREMENT RESULT: "CTL130109005\_fin2"**

1/9/2013 9:49AM

Frequency MHz	Level dBµV	Transd dB	Limit dBµV	Margin dB	Detector	Line	PE
0.303000	36.60	10.2	50	13.6	AV	L1	GND
0.321000	36.30	10.2	50	13.4	AV	L1	GND
0.325500	33.70	10.2	50	15.9	AV	L1	GND

**SCAN TABLE: "Voltage (9K-30M)FIN"**

Short Description: 150K-30M Voltage

**MEASUREMENT RESULT: "CTL130109006\_fin"**

1/9/2013 9:52AM

Frequency MHz	Level dBμV	Transd dB	Limit dBμV	Margin dB	Detector	Line	PE
0.195000	42.00	10.2	64	21.8	QP	N	GND
0.595500	38.50	10.2	56	17.5	QP	N	GND
0.618000	37.10	10.2	56	18.9	QP	N	GND

**MEASUREMENT RESULT: "CTL130109006\_fin2"**

1/9/2013 9:52AM

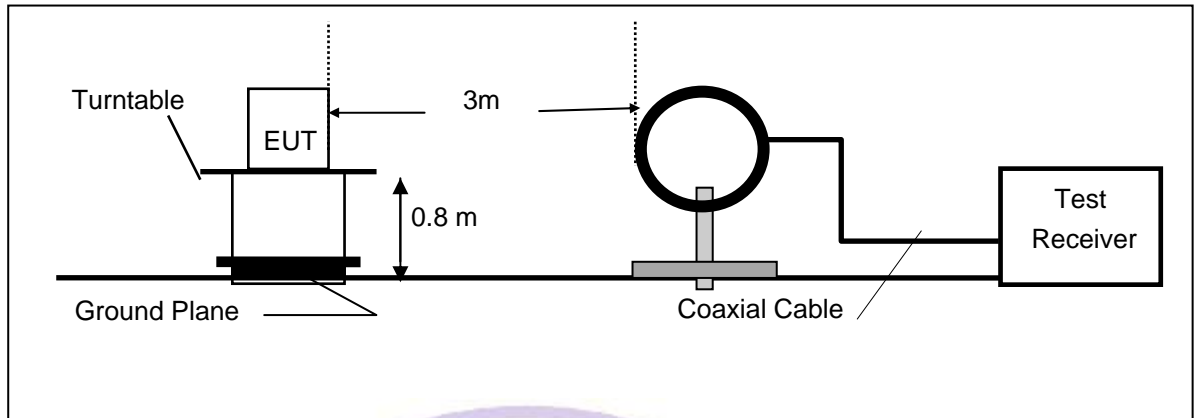
Frequency MHz	Level dBμV	Transd dB	Limit dBμV	Margin dB	Detector	Line	PE
0.271500	35.90	10.2	51	15.2	AV	N	GND
0.573000	30.20	10.2	46	15.8	AV	N	GND

Electromagnetic Test

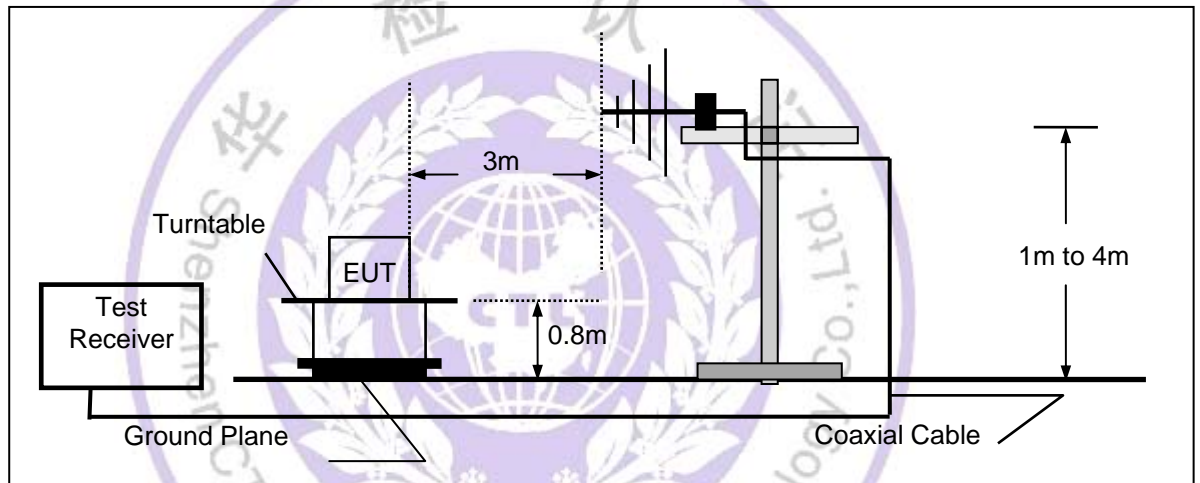
## 4.2. Radiated Emission Test

### TEST CONFIGURATION

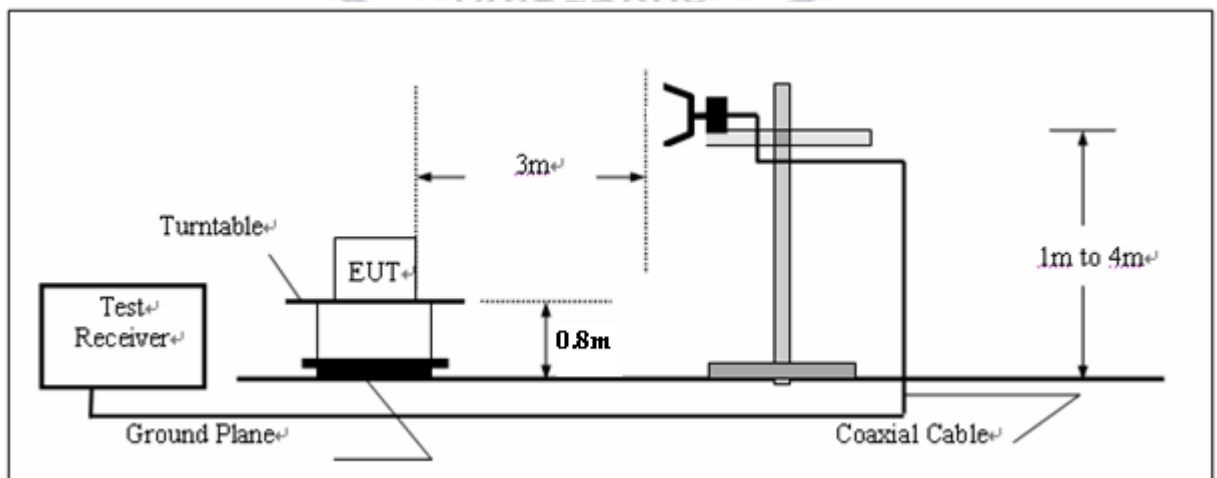
(A) Radiated Emission Test Set-Up, Frequency Below 30MHz



(B) Radiated Emission Test Set-Up, Frequency below 1000MHz



(C) Radiated Emission Test Set-Up, Frequency above 1000MHz



**FIELD STRENGTH CALCULATION**

The field strength is calculated by adding the Antenna Factor and Cable Factor and subtracting the Amplifier Gain and Duty Cycle Correction Factor(if any) from the measured reading. The basic equation with a sample calculation is as follows:

$$FS = RA + AF + CL - AG$$

Where FS = Field Strength	CL = Cable Attenuation Factor (Cable Loss)
RA = Reading Amplitude	AG = Amplifier Gain
AF = Antenna Factor	

**RADIATION LIMIT**

For unintentional device, according to § 15.109(a), except for Class A digital devices, the field strength of radiated emissions from unintentional radiators at a distance of 3 meters shall not exceed the following values:

Frequency (MHz)	Distance (Meters)	Radiated (dBµV/m)	Radiated (µV/m)
30-88	3	40.0	100
88-216	3	43.5	150
216-960	3	46.0	200
Above 960	3	54.0	500

For intentional device, according to § 15.209(a), the general requirement of field strength of radiated emissions from intentional radiators at a distance of 3 meters shall not exceed the above table.

**TEST PROCEDURE**

1. The EUT is placed on a turntable, which is 0.8m above ground plane.
2. The turntable shall be rotated for 360 degrees to determine the position of maximum emission level.
3. EUT is set 3m away from the receiving antenna, which is varied from 1m to 4m to find out the highest emissions.
4. Maximum procedure was performed on the six highest emissions to ensure EUT compliance.
5. And also, each emission was to be maximized by changing the polarization of receiving antenna both horizontal and vertical.
6. Repeat above procedures until the measurements for all frequencies are complete.
7. Based on the Frequency Generator in the device include 16MHz. The test frequency range from 9KHz to 25GHz per FCC PART 15.33(a).

**Note:**

Three axes are chosen for pretest, the Z axis is the worst mode for final test.

For battery operated equipment, the equipment tests shall be performed using a new battery.



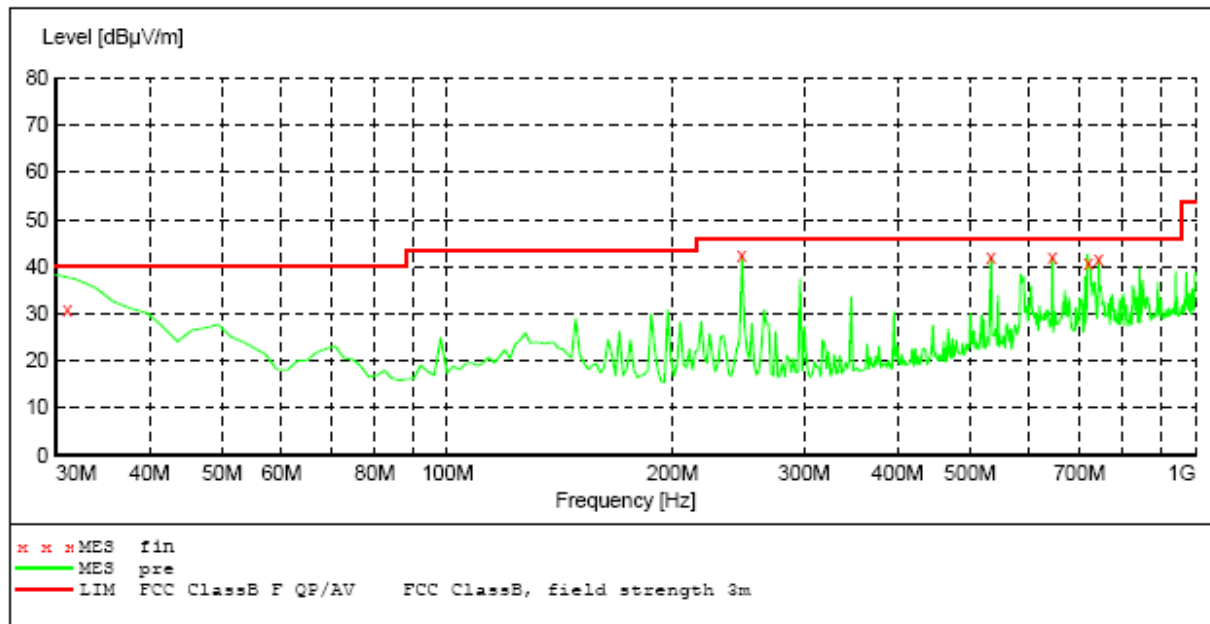
**TEST RESULTS**

All the test modes (TM1, TM2, TM3 and TM4) completed for test. The worst case of Radiated Emission is TM4; the test data of this mode was reported.

Below 1GHz Test Results:

**SCAN TABLE: "test Field(30M-1G)OP"**

Short Description:		Field Strength(30M-1G)				
Start	Stop	Step	Detector	Meas.	IF	Transducer
Frequency	Frequency	Width		Time	Bandw.	
30.0 MHz	1.0 GHz	60.0 kHz	QuasiPeak	1.0 s	120 kHz	HL562 09

**MEASUREMENT RESULT:**

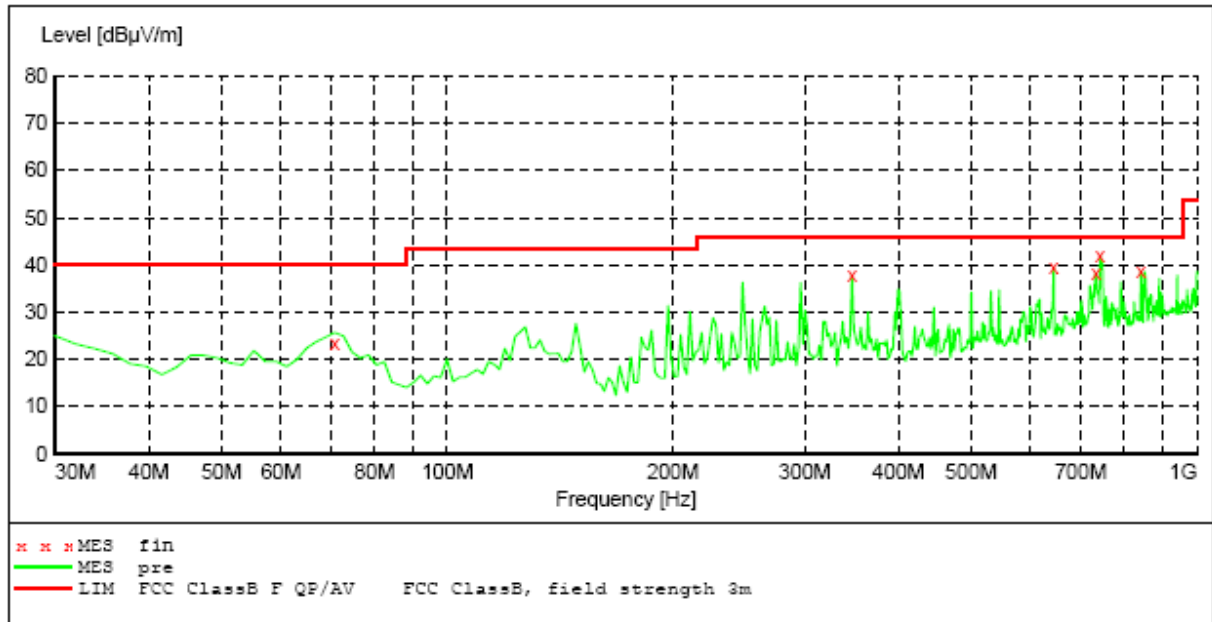
Frequency MHz	Level dBμV/m	Transd dB	Limit dBμV/m	Margin dB	Det.	Height cm	Azimuth deg	Polarization
31.080000	30.80	-5.3	40.0	9.2	QP	100.0	89.00	VERTICAL
247.710000	42.50	-12.5	46.0	3.5	QP	100.0	137.00	VERTICAL
533.460000	41.90	-5.8	46.0	4.1	QP	100.0	352.00	VERTICAL
644.260000	42.00	-3.2	46.0	4.0	QP	100.0	130.00	VERTICAL
720.060000	40.60	-2.9	46.0	5.4	QP	100.0	184.00	VERTICAL
743.400000	41.70	-2.2	46.0	4.3	QP	100.0	137.00	VERTICAL

Remark:

- (1) Measuring frequencies from 9 KHz to the 1 GHz, Radiated emission test from 9KHz to 30MHz was verified, and no any emission was found except system noise floor.
- (2) \* denotes emission frequency which appearing within the Restricted Bands specified in provision of 15.205, then the general radiated emission limits in 15.209 apply.
- (3) The IF bandwidth of EMI Test Receiver between 25MHz to 1GHz was 120KHz, 1 MHz for measuring above 1 GHz, below 30MHz was 10KHz.

**SCAN TABLE: "test Field(30M-1G)QP"**

Short Description: Field Strength(30M-1G)  
 Start Stop Step Detector Meas. IF Transducer  
 Frequency Frequency Width Time Bandw.  
 30.0 MHz 1.0 GHz 60.0 kHz QuasiPeak 1.0 s 120 kHz HL562 09

**MEASUREMENT RESULT:**

Frequency MHz	Level dBμV/m	Transd dB	Limit dBμV/m	Margin dB	Det.	Height cm	Azimuth deg	Polarization
70.820000	23.50	-4.8	40.0	16.5	QP	100.0	48.00	HORIZONTAL
346.850000	37.90	-9.8	46.0	8.1	QP	100.0	167.00	HORIZONTAL
644.260000	39.40	-3.2	46.0	6.6	QP	100.0	53.00	HORIZONTAL
733.680000	38.20	-2.6	46.0	7.8	QP	100.0	227.00	HORIZONTAL
743.400000	42.00	-2.2	46.0	4.0	QP	100.0	207.00	HORIZONTAL
842.540000	38.70	-0.7	46.0	7.3	QP	100.0	187.00	HORIZONTAL

**Remark:**

- (1) Measuring frequencies from 9 KHz to the 1 GHz, Radiated emission test from 9KHz to 30MHz was verified, and no any emission was found except system noise floor.
- (2) \* denotes emission frequency which appearing within the Restricted Bands specified in provision of 15.205, then the general radiated emission limits in 15.209 apply.
- (3) The IF bandwidth of EMI Test Receiver between 25MHz to 1GHz was 120KHz, 1 MHz for measuring above 1 GHz, below 30MHz was 10KHz.

## Above 1 GHz Test Results:

Freq. (MHz)	Ant.Pol. H/V	Detected Mode (PK/AV)	Reading (dBuV)	Ant./CU/ Amp. CF(dB)	Actual FS (dBuV/m)	Limit3m (dBuV/m)	Safe Margin (dB)	Note
2479	V	Peak	76.45	-3.30	73.15	113.98	-40.83	F
2479	H	Peak	69.62	-3.30	66.32	113.98	-47.66	F
4950	V	Peak	46.26	3.90	50.16	74.00	-23.84	H
4950	H	Peak	39.59	3.90	43.49	74.00	-30.51	H
7437	V		—					H
7437	H		—					H
Others			—					

Freq. (MHz)	Ant.Pol. H/V	Detected Mode (PK/AV)	Reading (dBuV)	Ant./CU/ Amp. CF(dB)	Actual FS (dBuV/m)	Limit3m (dBuV/m)	Safe Margin (dB)	Note
2443	V	Peak	74.73	-3.40	71.33	113.98	-42.65	F
2443	H	Peak	68.43	-3.40	65.03	113.98	-48.95	F
4886	V	Peak	46.32	3.70	50.02	74.00	-23.98	H
4886	H	Peak	42.62	3.70	46.32	74.00	-27.68	H
7329	V		—					H
7329	H		—					H
Others			—					

Freq. (MHz)	Ant.Pol. H/V	Detected Mode (PK/AV)	Reading (dBuV)	Ant./CU/ Amp. CF(dB)	Actual FS (dBuV/m)	Limit3m (dBuV/m)	Safe Margin (dB)	Note
2483	V	Peak	74.66	-3.30	71.36	113.98	-42.62	F
2483	H	Peak	68.66	-3.30	65.36	113.98	-48.62	F
4886	V	Peak	48.86	3.90	51.56	74.00	-22.44	H
4886	H	Peak	41.53	3.90	45.03	74.00	-28.97	H
7289	V		—					H
7289	H		—					H
Others			—					

## Remark:

- (1) Measuring frequencies from 1 GHz to the 25 GHz.
- (2) "F" denotes fundamental frequency; "H" denotes spurious frequency. "E" denotes band edge frequency.
- (3) \* denotes emission frequency which appearing within the Restricted Bands specified in provision of 15.205, then the general radiated emission limits in 15.209 apply.
- (4) Data of measurement within this frequency range shown "---" in the table above means the reading of emissions are attenuated more than 20dB below the permissible limits or the field strength is too small to be measured.
- (5) The IF bandwidth of EMI Test Receiver between 25MHz to 1GHz was 120KHz, 1 MHz for measuring above 1 GHz, below 30MHz was 10KHz.
- (6) When the test results of Peak Detected below the limits of Average Detected, the Average Detected is not need completed. For example: Top Channel at Fundamental 73.15dBuV/m(PK Value) <93.98(AV Limit), at harmonic 50.16 dBuV/m(PK Value) <54 dBuV/m(AV Limit), the Average Detected not need to completed.

### 4.3. Band Edge Measurement

#### TEST CONFIGURATION

Same as Section 4.2

#### TEST PROCEDURE

The band edge compliance of RF radiated emission should be measured by following the guidance in ANSI C63.4 with respect to maximizing the emission by rotating the EUT, measuring the emission while the EUT is situated in three orthogonal planes (if appropriate), adjusting the measurement antenna height and polarization etc. Set RBW to 100KHz and VBM to 300KHz to measure the peak field strength and set RBW to 1MHz and VBW to 10Hz to measure the average radiated field strength.

The conducted RF band edge was measured by using a spectrum analyzer. Set span wide enough to capture the highest in-band emission and the emission at the band edge. Set RBW to 100 KHz and VBM to 300 KHz, to measure the conducted peak band edge.

#### LIMIT

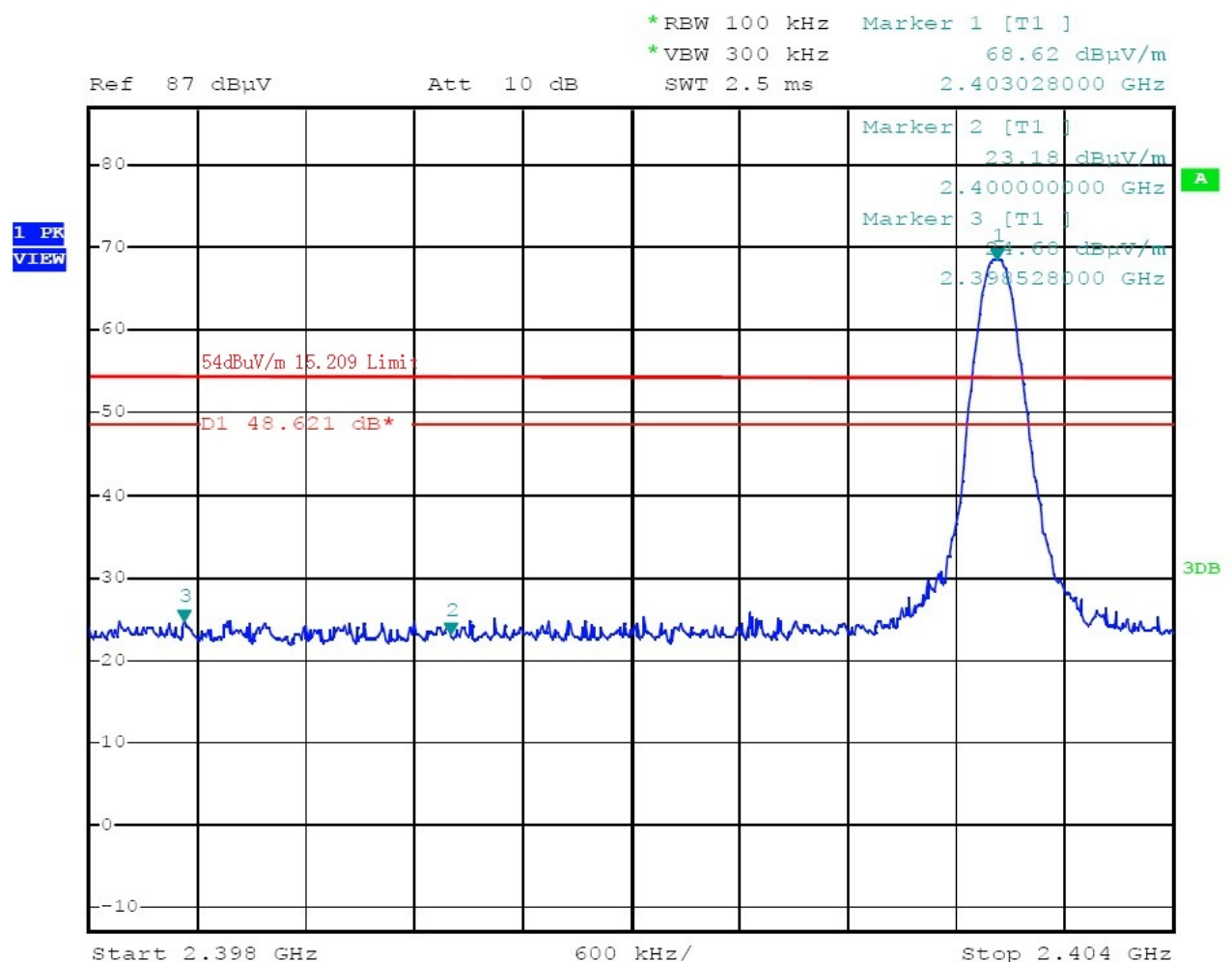
FCC PART 15.249(d) Emissions radiated outside of the specified frequency bands, except for harmonics, shall be attenuated by at least 50 dB below the level of the fundamental or to the general radiated emission limits in §15.209, whichever is the lesser attenuation.

#### TEST RESULTS

##### **Radiated Test:**

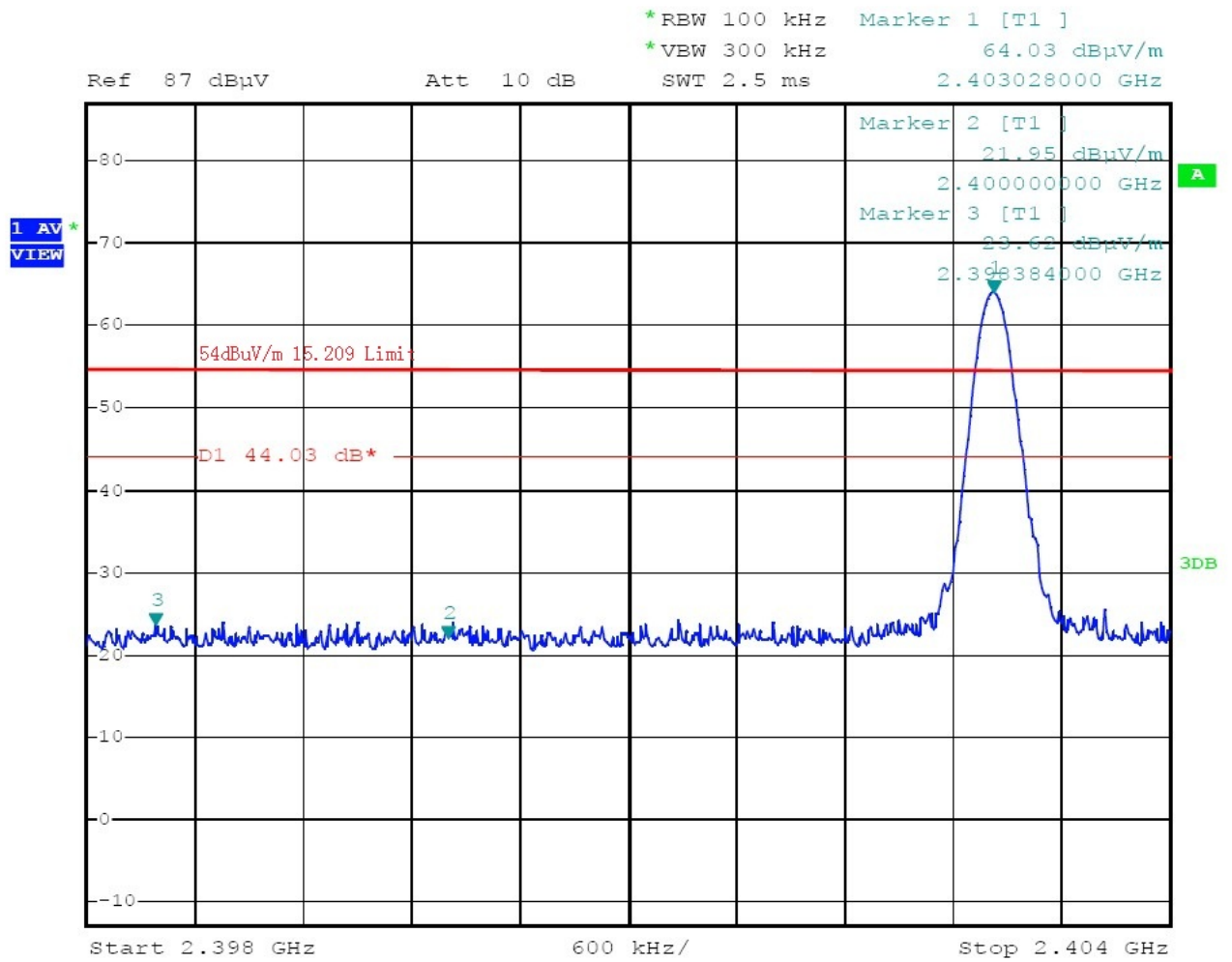
Operation Mode: TX on Bot Channel

Polarity: Hor.



Operation Mode: TX on Bot Channel

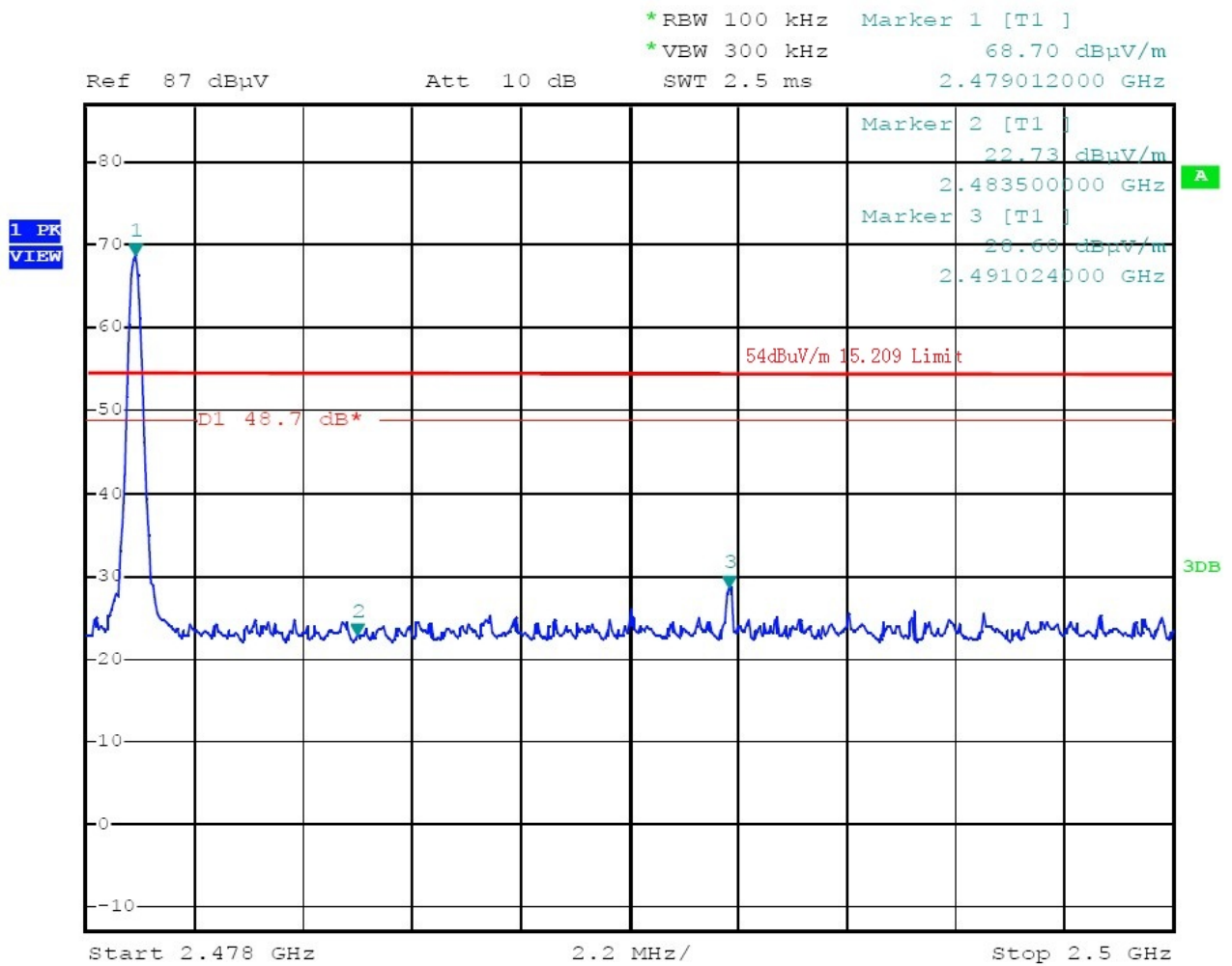
Polarity: Ver.





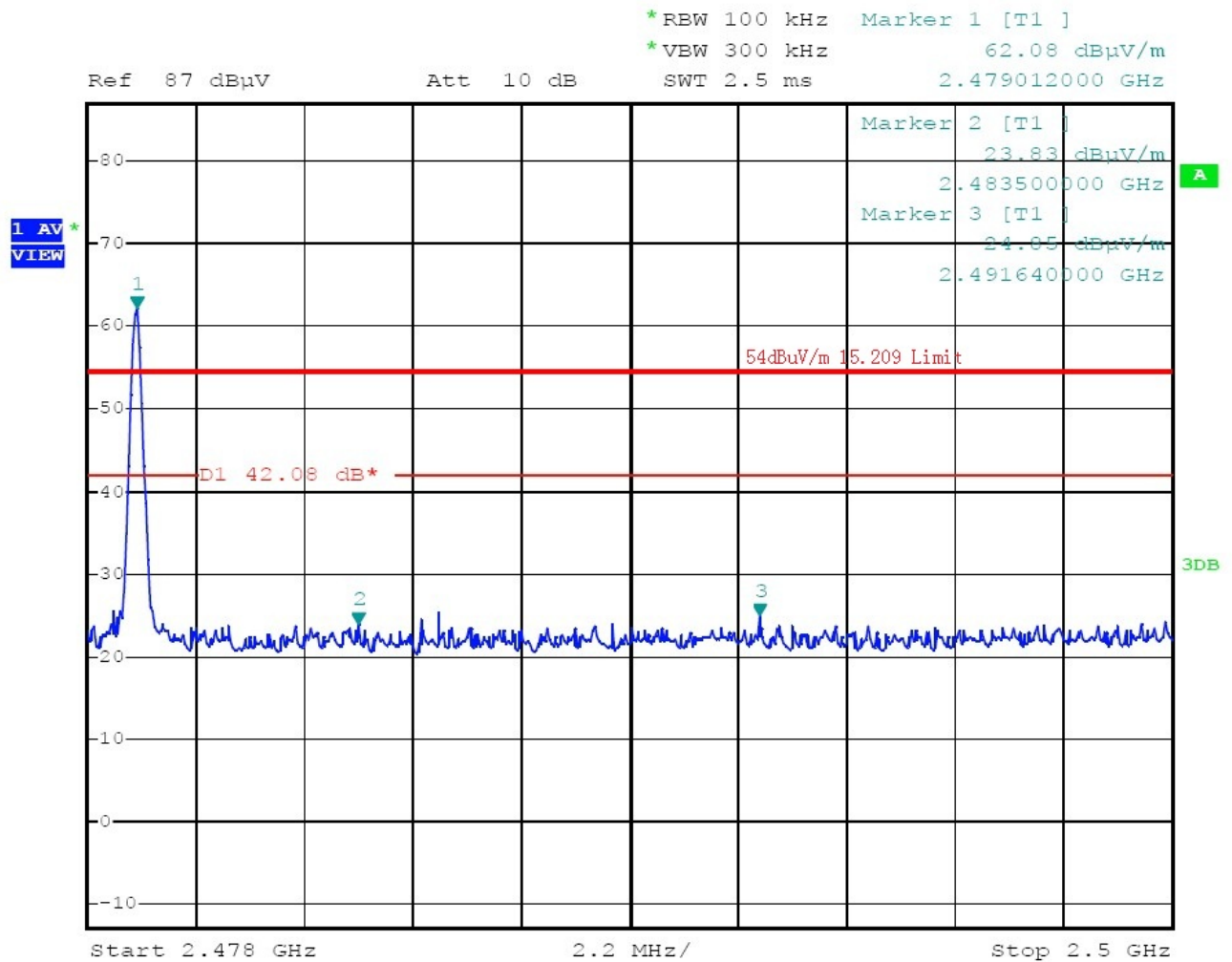
Operation Mode: TX on Top Channel

Polarity: Hor.



Operation Mode: TX on Top Channel

Polarity: Ver.



Note:

1. The field strength of any emissions which appear outside of this band shall not exceed the general radiated emission limits in Section 15.209.
2. The average measurement was not performed when the peak measured data under the limit of average detection.

## **5. Antenna Requirement**

### **Standard Applicable**

For intentional device, according to FCC 47 CFR Section 15.203, an intentional radiator shall be designed to ensure that no antenna other than that furnished by the responsible party shall be used with the device.

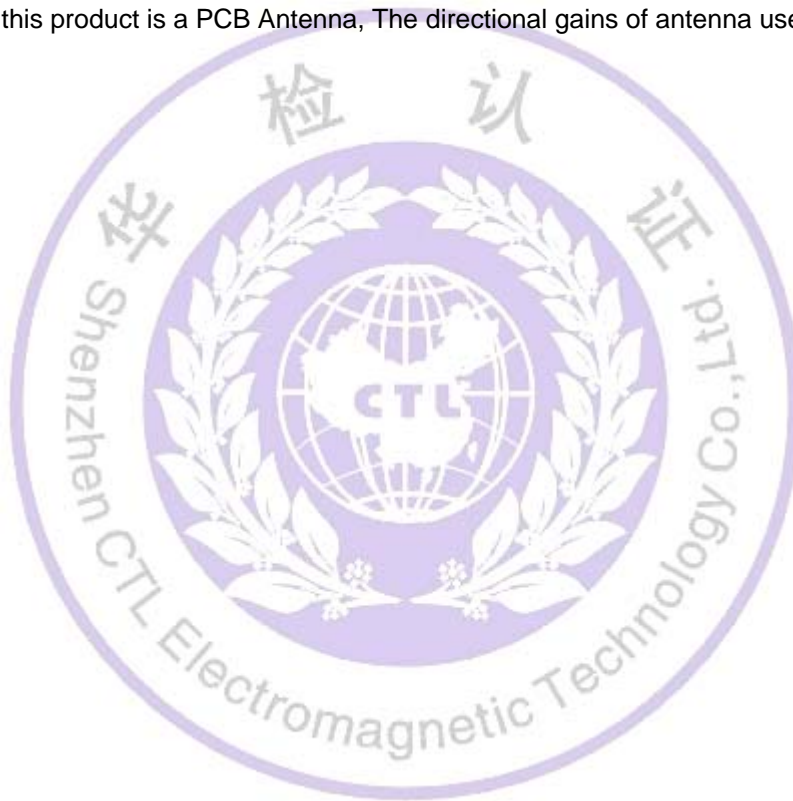
And according to FCC 47 CFR Section 15.247 (c), if transmitting antennas of directional gain greater than 6dBi are used, the power shall be reduced by the amount in dB that the directional gain of the antenna exceeds 6dBi.

### **Refer to statement below for compliance.**

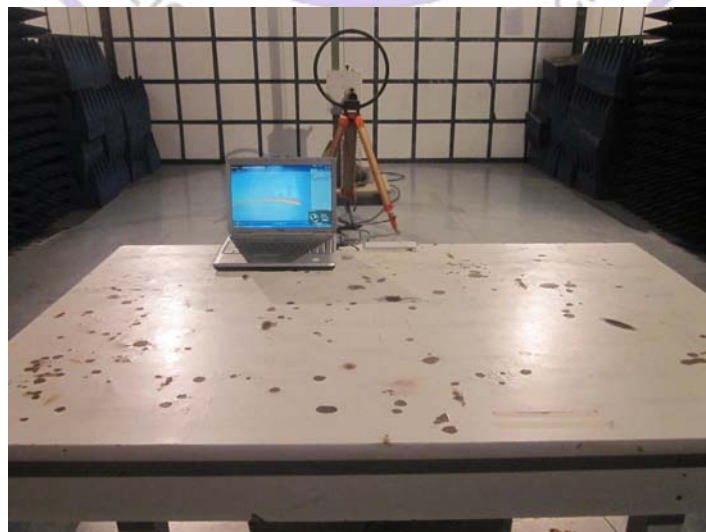
The manufacturer may design the unit so that the user can replace a broken antenna, but the use of a standard antenna jack or electrical connector is prohibited. Further, this requirement does not apply to intentional radiators that must be professionally installed.

### **Antenna Connected Construction**

The antenna used in this product is a PCB Antenna, The directional gains of antenna used for transmitting is -1.0 dBi.



## 6. Test Setup Photos of the EUT

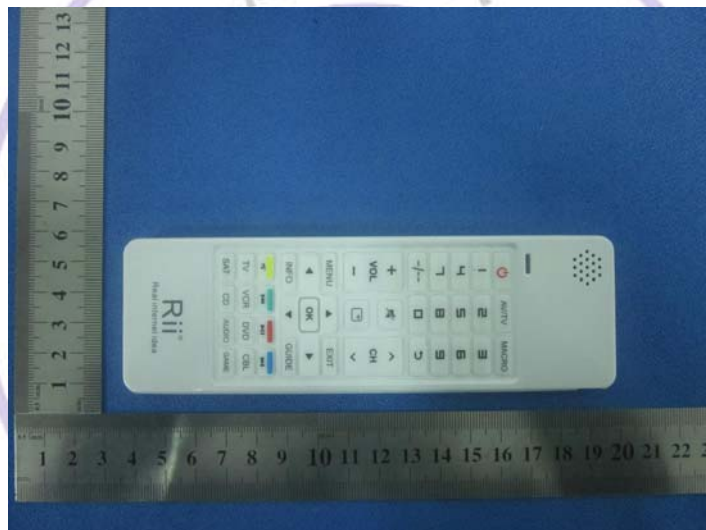




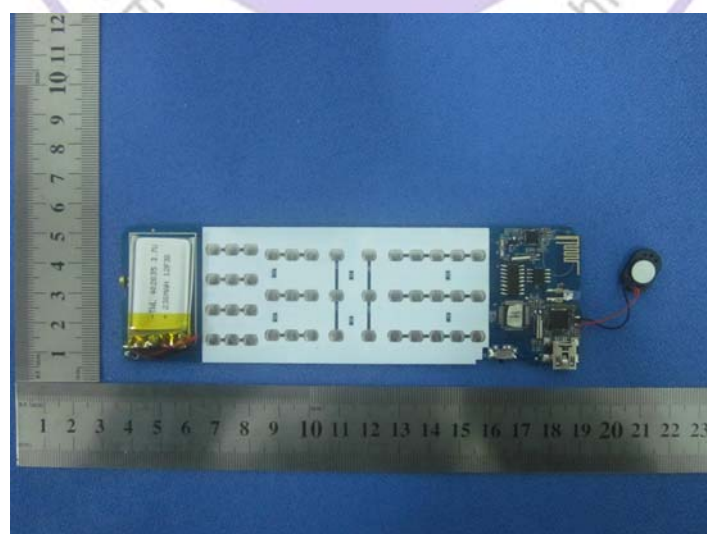


## 7. External and Internal Photos of the EUT

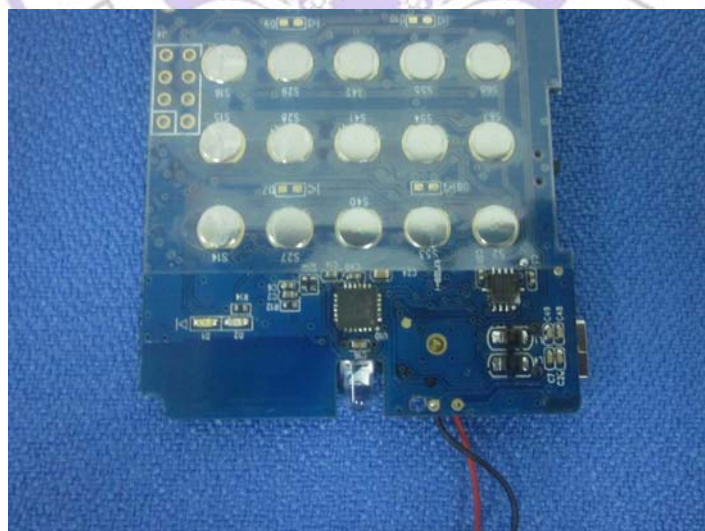
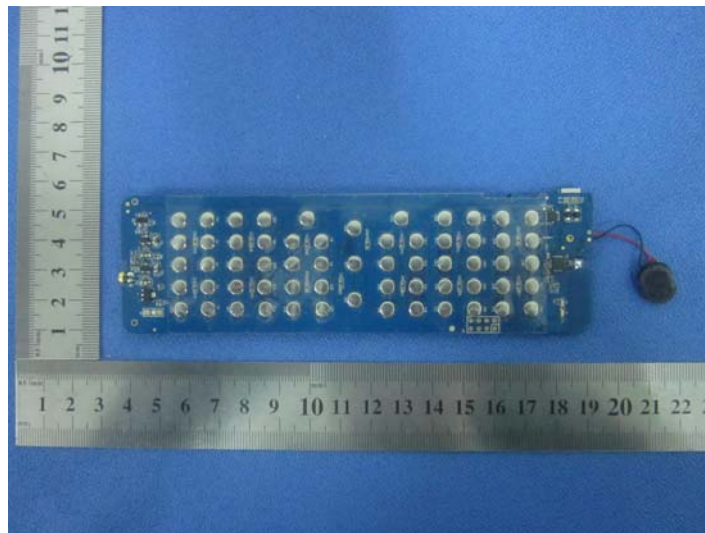
### External Photos

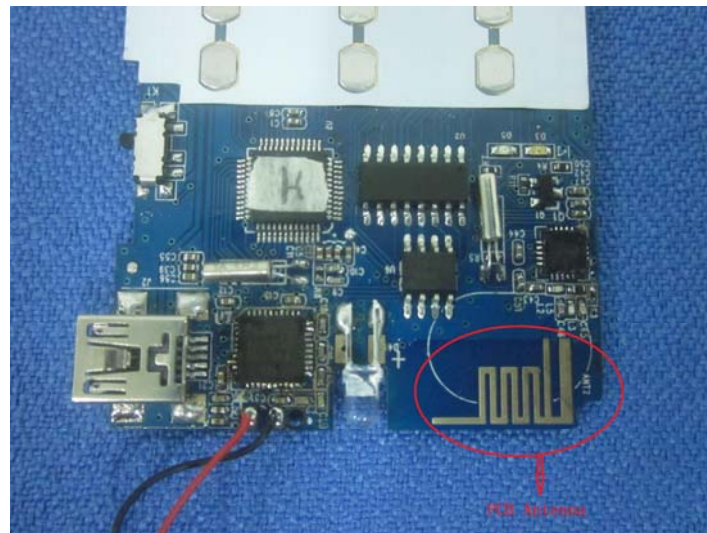




Internal Photos







.....End of Report.....

