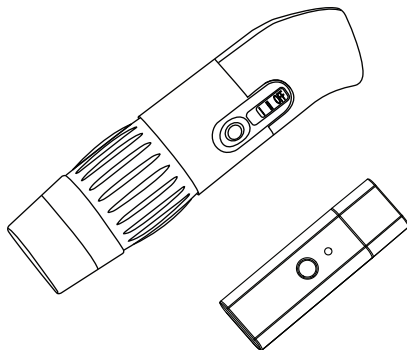


eScope Instruction Manual



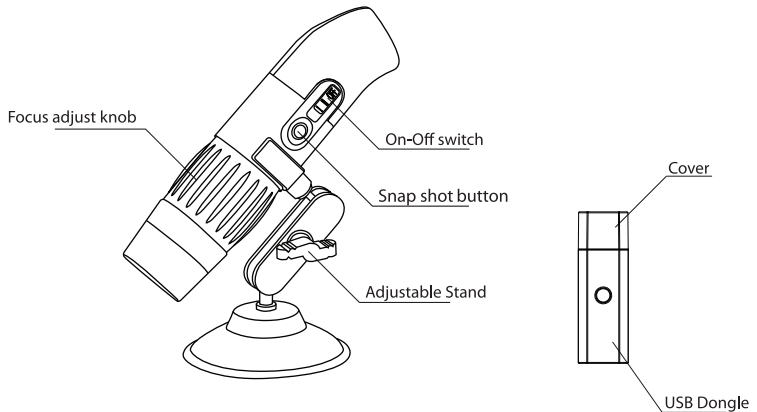
Computer System Requirement

Microsoft Windows XP, Vista or Windows 7
Pentium® 4 or AMD Athlon™ processor or Higher
100MB free hard disk space
512MB RAM or more
16Bit color Display
USB interface
CD or DVD Drive

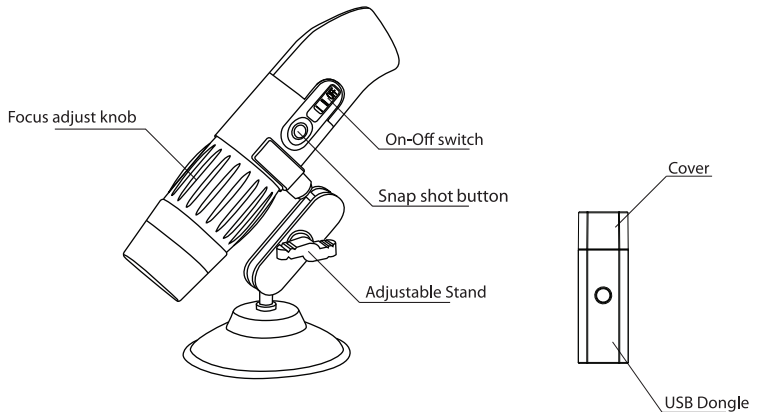
Accessories

Adjustable Stand
User Guide
CD ROM
USB Cable

Product overview



Product overview



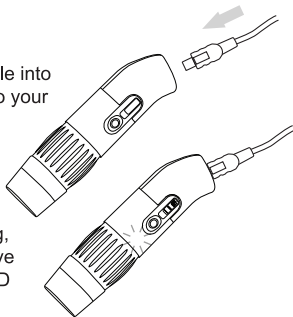
Copy Amcap Tool

1. Insert enclosed CD into CD-ROM driver, Copy the "Amcap .exe" to your desktop or other location of your Computer. Then you can use the tool Capture photo and video.



Battery re-charge

Plug the small end of the USB cable into the eScope, plug the large end into your working computer.



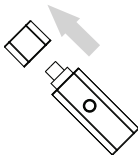
Blue LED light up when recharging, approximately 3hours ,eScope have been fully charge and the Blue LED will be turn off.

When you recharge without using eScope, your should push the slide swith to off position, you can continue use eScope when recharging.

When the battery is empty, the main unit and USB Dongle is synchronize, the main unit RED LED flashing slowly, you should recharge the battery.

USB Dongle Connection

Remove the dongle cover then plug it to your computer USB slot



When the Dongle RED light flashing, turn on your eScope main unit.



After synchronize, Dongle & main unit LED light up continuity.

* First time connect USB Dongle to PC, PC will find new device and install the software of device automatically. Then prompt the device is ready to use.

Viewing

1. Open “AMCap” icon in your PC.



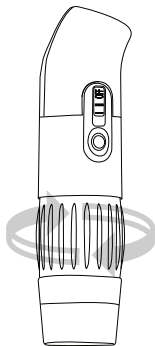
2. If your computer has another webcam, you can select eScope from pull down menu “Devices”



3. In the pull down menu > option, you can select “Video Capture Filter” or “Video Capture Pin” which to set properties that you want.

Focusing

Put eScope on the subject and turn Focus adjust knob slightly to find the sharpest focus position.

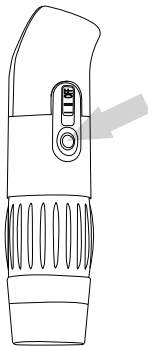


Capture image

a) After focusing, you can capture image by Snap shot button .
A Windows(PhotoDisplay) will appear,you click "SavePhoto" save the captured image to destination path.

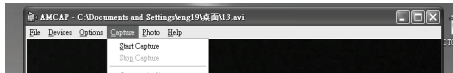
b) Click Photo>Start photo, A Windows (PhotoDisplay)will appear, you click "SavePhoto" save the captured image to destination path.

Save the photo is BMP format.

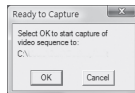


capture video

1. Click “Capture > start capture” on the pull down menu.



2. Confirm or change the video destination folder, click OK.



3. Confirm or change the video file name.
4. Capture start, until you stop it by pull down menu “Capture > stop capture”.



Specifications:

Image Sensor	0.3Mega Pixels
Video Capture Resolution	640x480
Photo Capture Resolution	640x480
Prevrew Resolution	640x480,320x240,160x120
Color	24bit RGB
Magnification Rate	Microscope Lens 10X-20X,120X
Focus Range	Manual Focus From 10mm to 500mm
Main Device Power Supply	Built-in Li-on 3.7V 400mAH
Dongle Power Supply	5V DC from USB Port
Battery Continues Working time	2Hour
Transport distance	10M
Load Frequency	2.4G
Flicker Frequency	50Hz/60Hz
Frame Rate	15fps@VGA

LED	Main:2pcs; Red-working indication, Blue-Charge Indication Dongle:1pc; Red-working indication
Button	Main: 1pc For Snap shot & Pair, Dongle: 1pc For Pair
Photo Format	BMP; JPEG
Video Format	AVI format
White Balance	Auto
Exposure	Auto
Light Source	8 LED White Lights (High /Low)
Dongle Interface	USB 1.1
Operation System	Windows XP/Vista/Windows 7
Size & Weight	Main:130mm(L) x37mm(D) Dongle: 80mm(L) x26mm(w)x9.5mm(H)

This device complies with part 15 of the FCC Rules. Operation is subject to the following two conditions: (1) this device may not cause harmful interference, and (2) this device must accept any interference received, including interference that may cause undesired operation.

NOTE:

Changes or Modifications not expressly approved by the party responsible could void the user's authority to operate this device.

NOTE: This equipment has been tested and found to comply with the limits for a Class B digital device, pursuant to Part 15 of the FCC Rules. These limits are designed to provide reasonable protection against harmful interference in a residential installation. This equipment generates, uses and can radiate radio frequency energy and, if not installed and used in accordance with the instructions, may cause harmful interference to radio communications. However, there is no guarantee that interference will not occur in a particular installation. If this equipment does cause harmful interference to radio or television reception, which can be determined by turning the equipment off and on, the user is encouraged to try to correct the interference by one or more of the following measures:

- Reorient or relocate the receiving antenna.
- Increase the separation between the equipment and receiver.
- Connect the equipment into an outlet on a circuit different from that to which the receiver is connected.
- Consult the dealer or an experienced radio/TV technician for help.



www.oi.com.hk