

Operation Description

After connecting the receiver to other required equipment, turn on the receiver, there should be no channel information available at the first startup; you need to follow the procedure to setup your receiver to search the channel

Main Menu

Press MENU button to activate main menu, main menu consists of Installation, service organization, STB setting ,STB status, USB Menu, Ethernet Setting, CA Menu.

Use UP/DOWN button to select your subject and press OK to confirm your selection and enter that sub menu, press EXIT button you can return to the previous menu.

1 Installation

Select Installation, press OK button to activate Installation menu, the Installation window will be displayed.



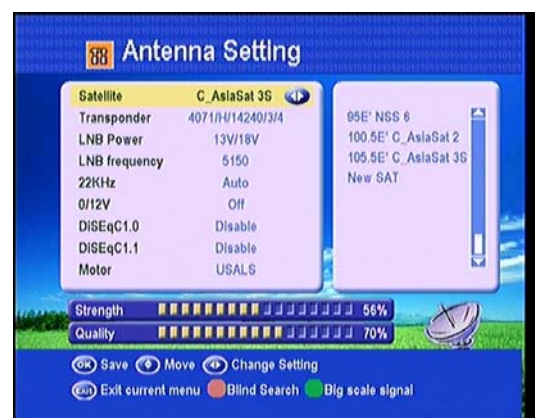
1.1 Antenna Setting

Press OK to Enter Antenna Setting; here you can make Satellite Search, TP search, blind Search and other Functions.



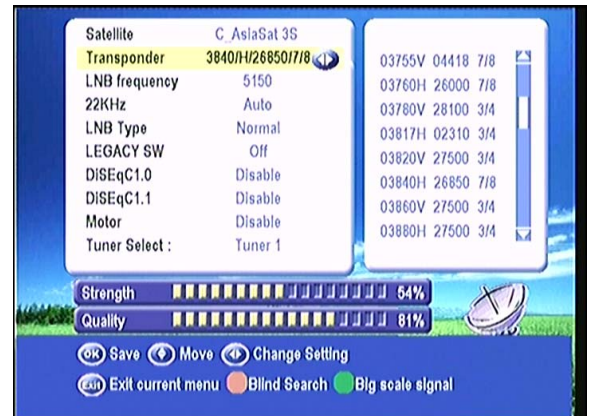
a: Satellite List

Enter this picture, you can see the presorted Satellite list, in this menu, you can press the UP/DOWN keys choose the satellite which you want to use, then press the OK to confirm the setting, you can setting other parameters.



b: Transponder List

If you change the satellite, the transponder will be changed automatically. You will find the transponder list of selected satellite here. Choose TP which you want to use, then press the OK to confirm the setting, you can setting other parameters.



c: LNB frequency and power

Here you need to check the LNB frequency according to your antenna, set the correct frequency or define yourself, and keep LNB power to be 13/18V.

d: 22KHz

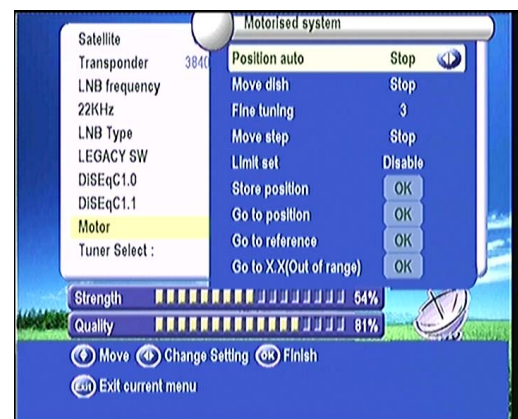
In case you are using two antennas connected to a 22KHz tone switch box. You can supply either 22KHz by setting “ON” or “OFF” to select antenna.

e: DiSEqC1.0 DiSEqC1.1

If you connect antenna to DiSEqC Switch, you need to specify the DiSEqC input to which your selected satellite have been configured.

f Motor

When you Enable this option, and press OK, you will get this window to show you how to adjust position of the dish.



➤Move Auto [W/E]

Press RIGHT/LEFT button, the dish will be motorized to East/West continuously, it will stop until it find the best signal.

➤Move west-east

Push RIGHT/LEFT button, the dish will be motorized to East/West step by step until you find the best signal showed on the signal bar.

➤Fine Tuning(1)

Input digital button to set the moving step; Press RIGHT/LEFT button to move steps.

➤Store Position

Save the current position you searched.

➤Go to Position

Press OK button to move the dish to the stored position.

➤Go to Reference

Press OK button to move the dish to 0 position.

Press Exist after setup, and you can search channel now

➤Set West Limit

Enable West limit.

➤Set East Limit

Enable East limit.

➤Disable Limit

Disable West limit and East limit.

USALS: If you use USALS and select the Motor Mode to USALS, here one more option you can move the dish to exact position of the satellite.

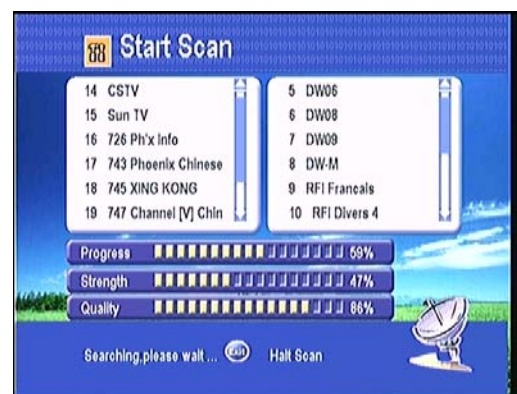
g. Tuner Select

Enter this menu, select tuner which one you input the signal, tuner1 or tuner2 supply change

NOTE: If you don't know any message about the satellite you can press the RED key using blind search.

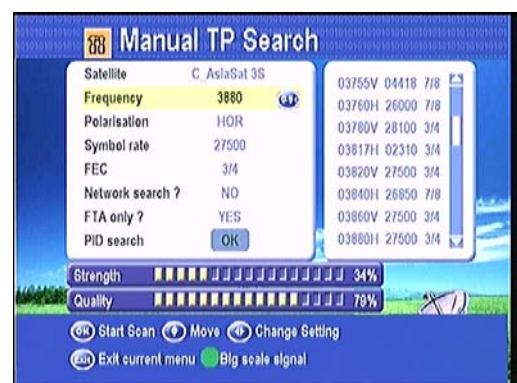
4.1.2 Automatic Satellites Search

Selecting one satellite, and press OK to mark, you can select more satellite at this time, but make sure they are all configured to your DiSEqC Switch, after this step , select all channel scan, free channel scan or blind search, Pressing OK will start searching, During searching the TV Channel and Radio Channel will be listed separately.



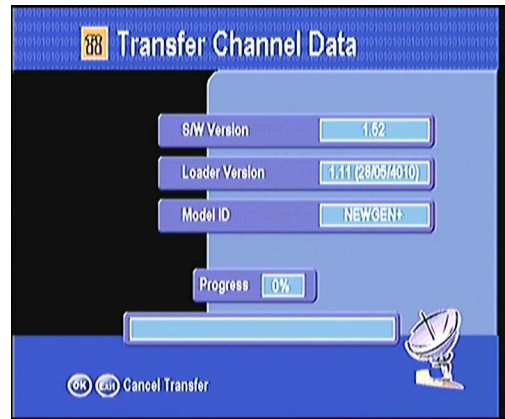
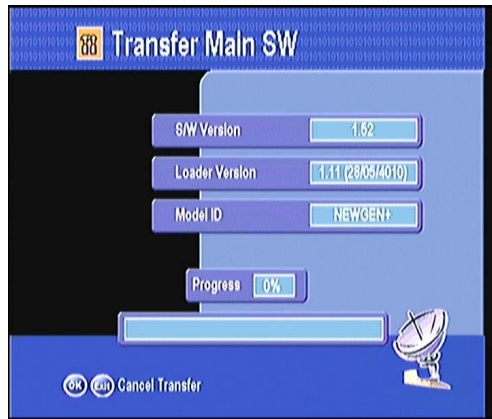
4.1.3 Manual TP Search

Here you need to select one satellite which your dish pointed, then select the frequency, you need to setup the Polarization of that selected transponder, symbol rate, FEC, Network search (if the transponder contains this function), if you know the PID figure for that channel, you can input and search by this way.



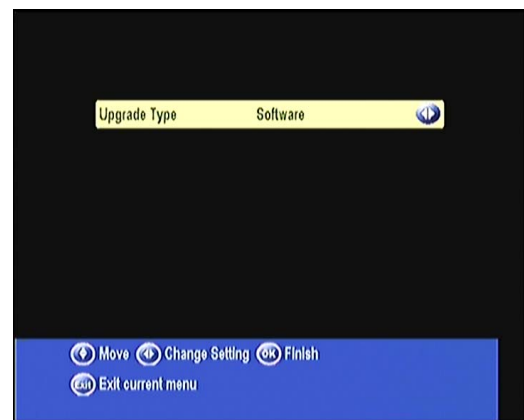
4.1.4 Transfer Data

Here you can transfer main sw or channel data from pc to STB



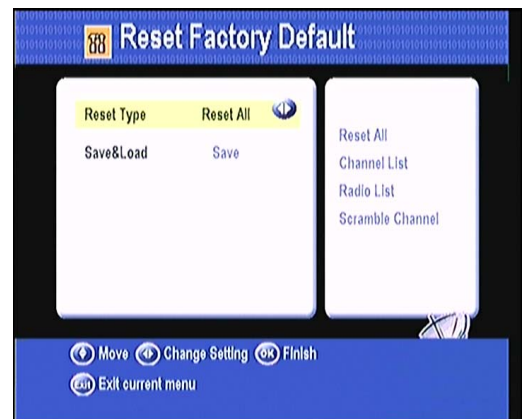
FTP Download

VFTP download some receiver like message, sw, channel list, so you should connect the Ethernet, then connect FTP servers.



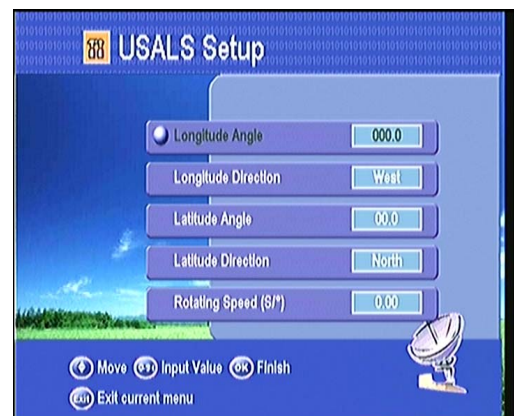
4.1.5 Reset Factory Default

You can erase all the channels and settings you made by selecting ALL, if you only want to erase the channels you searched and stored, please select Channel List. You also can save or load channels



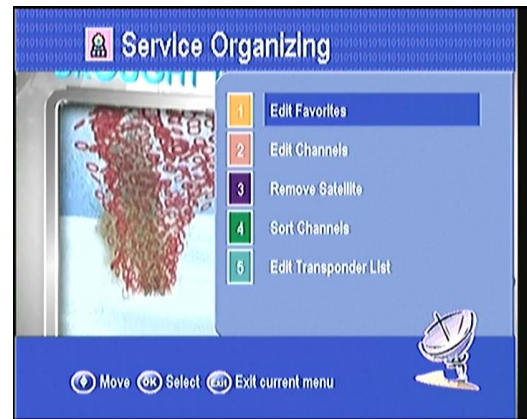
4.1.6 USALS Setup

You can setup the Dish position to the satellite you want to search, you need to check the detailed information from internet and input the accurate parameters about your local position.



4.2 Service Organizing

Enter the service organizing; you can set channel fav, edit channels, like lock, rename, delete, and so on.



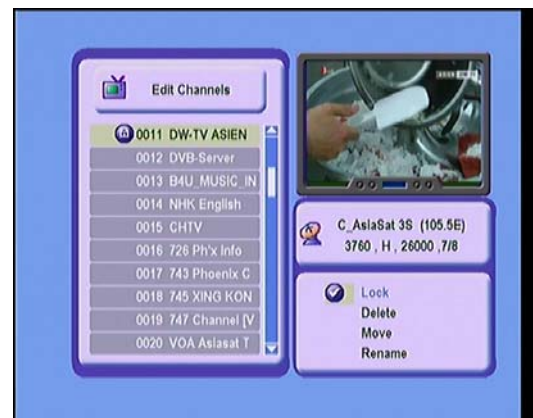
4.2.1 Edit Favorites

Here you can select your favorite channel and mark them set 8 fav, Press the FAV button, you can classify the favorites categories.



4.2.2 Edit Channels

In this menu you can delete, rename, lock and move the selected channel.



4.2.3 Remove Satellite

Select one satellite and press OK to mark, after you exit this menu, you will be asked to confirm whether delete the satellite or not. If you select YES, all the channels in the selected satellite will be deleted.



4.2.4 Sort channels

You can sort the channels in different sequence; press OK on viewing mode you can check the sorting result.



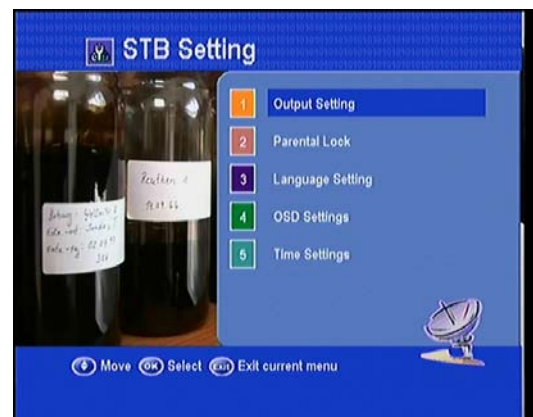
4.2.5 Edit Transponder list

Here if you press OK on the left you can rename Delete, Move, and Add satellite. If you are on the right and press OK, you can Delete, Edit and add transponder



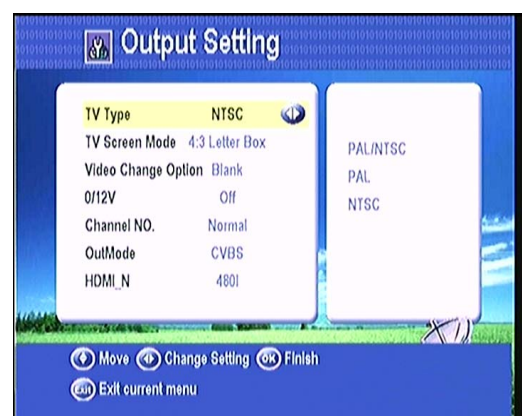
4.3 STB Setting

Here you can setup Menu Language, audio Language, TV output and Time setting according to your country



4.3.1 Output Setting

You can setup TV type PAL/NTSC, select TV screen mode either 4:3 or 16:9 according to the TV type and choose Scart output either CVBS or RGB according to the Standard of your country. You also can set the video change.



4.3.2 Parent Lock

This function prevents children or unauthorized persons from watching programs. You can select if need the password or not for Installation, Service and System, also you can change the Password, the default password is 0000.. When you choose yes, you can “change the password option to unlock or lock some menu enter



4.3.3 Language Setting

You can setup the menu language, audio language according to the standard of your country



4.3.4 OSD Setting

Here you can setup the menu background, transparency and color, and help information for menu, Time out means the duration of the information bar.



4.3.5 Timer Setting

Here you can set Timer, Event Timer and Sleep Timer.

a: Time Setting

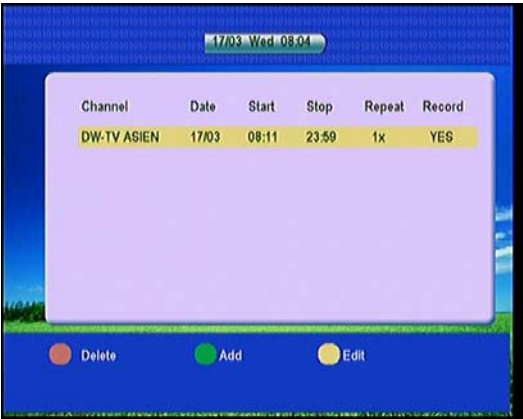
The default time setup is auto, you can select manual and input the by hand, select the time zone according you



country and you will get the correct current time which is based on TDT (Time and Data Table) in the stream of the current channel service.

b: Event Timer

Here you can set your favorite channel to begin broadcasting at future time you set, including both TV and Radio, you can add, edit and delete the event you set.



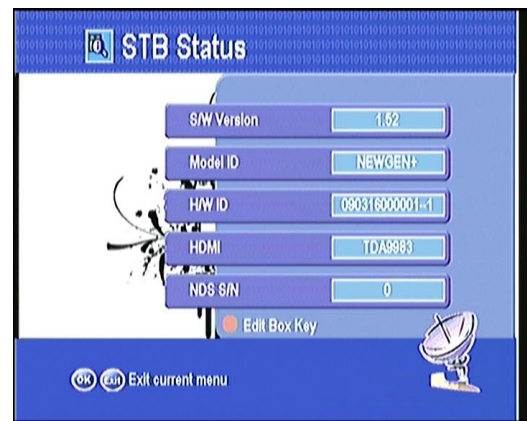
c: Sleep Timer

Here you can set Sleep timer and this will enable receiver to sleep automatically according to the time you set.



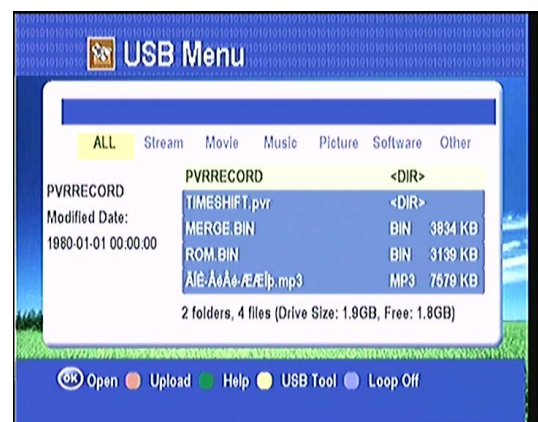
4.4 STB Status

In this window, you can get the information about the STB, such as product name, software & hardware ver, loader ver and so on. When you need service from the dealer you need to submit this information in order to get the correct and fast after sales service.



4.5 USB menu

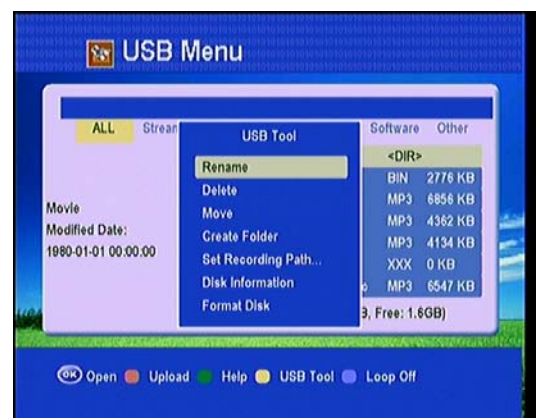
Press USB key to enter USB menu. The current directory path display on the top part of the menu. The default file list is composed of all files and subfolders in the current path.



All supported files can be opened by pressing "OK" key, and these files such as *.mp3, *.jpg, *.bmp, *.dat, *.mpg, *.VOB, can also be opened by pressing ► key.

- 1) Press ◀/▶ key to switch to a specific file list of the current folder
- 2) Press OK key to play the selected file

- 1) Press Blue button change loop off/on.
- 2) Press Green button get help message.
- 3) Press RED button upload the software.
- 4) Press the Yellow key, enter USB tool, you can rename & delete & move the file or format the disk and other's function, select one which you want.



A-1 : Play Stream

- **OK** : View play list / Play the selected file in play list
- **▶** : Play the selected file in play list / Resume playing file
- **■** : Stop playing file
- **⏮** : Play the previous item
- **⏭** : Play the next item
- **⏸ / PAUSE** : Pause
- **◀ / ▶** : Adjust volume
- **EXIT** : Exit play list menu / Exit playing state and return to file list menu.

A-2 : Play Movie

- **OK** : View play list / Play the selected file in play list
- **▶** : Play the selected file in play list
- **■** : Stop playing
- **⏸ / PAUSE** : Pause
- **⏮** : Fast backward
- **⏭** : Fast forward
- **⏮** : Play the previous item
- **⏭** : Play the next item
- **EXIT** : Exit playing state and return to file list menu

A-3: Play Music

- **OK** : View play list / Play the selected file in play list
- **▶** : Play the selected file in play list
- **■** : Stop playing
- **⏸ / PAUSE** : Pause
- **⏮** : Fast backward
- **⏭** : Fast forward
- **⏮** : Play the previous item
- **⏭** : Play the next item
- **EXIT** : Exit playing state and return to file list menu

A-4: View picture

- **OK** : View play list / Play the selected file in play list
- **⏮** : Play the previous item
- **⏭** : Play the next item
- **▲/▼** : Play the previous/ next item
- **EXIT** : Exit playing state and return to file list menu

A-5: Download Software/Database

- 1) Press **◀ / ▶** key to switch to “Software” file list of the current folder
- 2) Press OK key to open and download the selected file

USB PVR:

If the event timer record status is YES, the channel will be recorded in PIP mode .Use USB devices such as USB memory stick, or USB interface hard-disk drive (HDD) with this receiver,



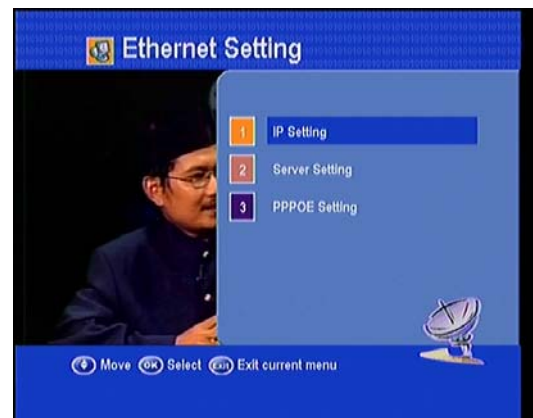
the start time is coming, For example, A is currently view, B set to recording, you will be meet two situation

- 1) A and B are same channels, the view will be play/record at the same time.
- 2) A and B under same TP, the view will be play A channel, and recording B at same time.

In any way you set record as what is said above, Watching one channel and recording another channel you can switch the channel

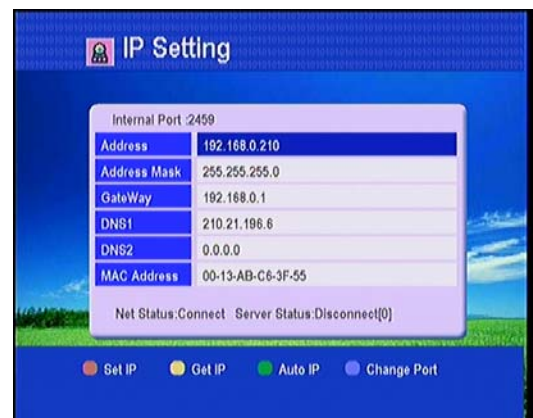
4.6 Ethernet Setting

Enter this view, you can set some net parameter. press the Green key, start auto search IP, the receiver will reboot. Press Blue key, change the net port, and press Red key can set IP by hand



4.6.1 IP Setting

press the Green key, start auto search IP, the receiver will reboot. Press Blue key, change the net port, and press Red key can set IP by hand



4.7 CA Menu

Press OK enter the CA menu in this view, you can find some CA message

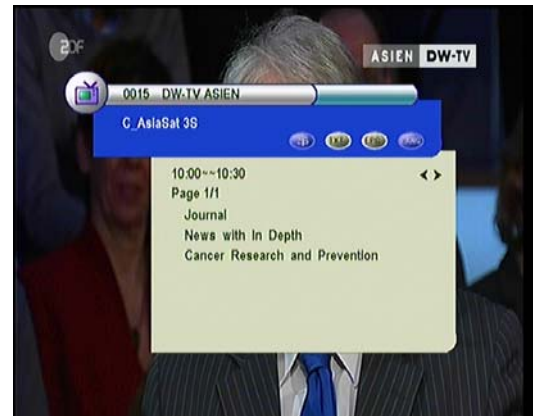


4.8 Other Useful Information

This will guide you on how to use general info while watching TV program or listening Radio program.

➤ **i:**

In the viewing mode when you press **INFO** button, the info bar will pop up, it contains satellite and channel information, detailed EPG info will display in the menu if press **INFO** again.



➤ **SAT**

Press **SAT** button on the remote control, you will get this menu which contains the satellites you searched and stored, select one satellite and press **OK**, all channels will be listed under that satellite you selected



➤ **Recall**

Press **Recall** button and you can get the viewed history channel. maximum it can list channels that you recently viewed.




➤ **ZOOM**

Picture zooming function.



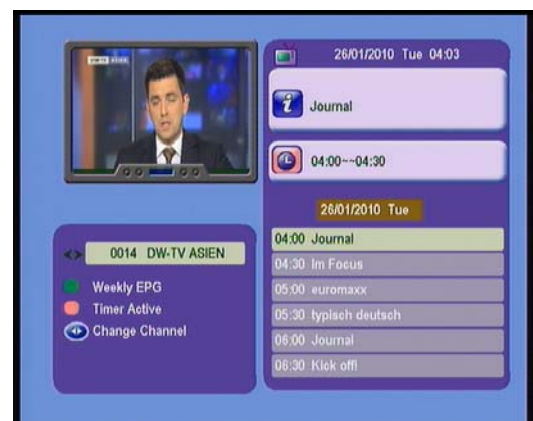
➤Fav

In viewing mode, you can get the favorite channel group by pressing FAV, press  to change category. Press RED Key you can move the channels. Press GREEN key you can rename favors



➤EPG

Press EPG button on remote control, you can get the electronic program guide if pliable. You can get the detailed information bout that program by pressing INFO. Press RED key to go to timer Active, timer Active's operation similar to the above Event Timer's functions.



➤ You can Switch Day EPG and Weekly EPG by Pressing Green Key. In this menu, press Right/Left button, you can view the different time EPG of one day. In the end, you can get the detailed information about that program by pressing INFO Key.



➤AUDIO

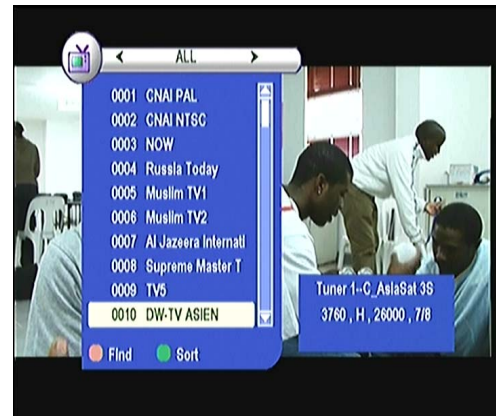
In viewing mode press AUDIO button and you will get this window. You can set the Audio mode here.(stereo, left, right).



➤ Channel List-OK

In viewing mode press OK button and you will get this window.

Press ◀ / ▶ to view channel in different type, ALL, FTA, Scramble.



- 1) Press the Red button, you can put in the channel name and quickly find the channel you want .
- 2) Press the Green button; you can watch the channels sort by alphabet A-Z

➤ TXT:

Show the teletext content if teletext is transmitted.



➤Recording

Press the ● Start recording, you will be asked record the current channel ,select “YES” or “NO” of you mind, when you select yes ,enter the USB recording, press F1 button then you can view the current channel in big window and selected channel in small windows

In this menu, some special operation like this.

- 1)press F1 button. enter PIP menu,
- 2)Press F1/F2 button ,zoom in/out the small picture.
- 3)Press ◀ / ▶ or ▼ / ▲ move small windows.
- 4)Press INFO button, show or hide the info bar



➤Time shift

Press the **pause** button, enter the time shift function. can pause and resume a live television program, and even rewind and replay it. When you are watching a program and you miss something, you can rewind and replay it. Or when your attention is needed elsewhere, you can pause it and resume it a short time later without losing any of it. When you do this, you are no longer watching the



live program; instead you are watching a delayed presentation of it. This is called time shifted television., you can skip commercials until you catch up to the live broadcast.

With time shift enabled, the following operations are possible: To go back in time, hold down the ◀◀ button; to go forward, hold down the ▶▶ button.

📄 Press the **pause** button again, pause the channels

📄 Press the **Exit** button, you will be asked whether exit or save the program data, select yes or no you want.

