

**Test Plot 1#: GSM 850\_Head Left Cheek\_Middle Channel****DUT: Mobile phone; Type: JOY; Serial: 16081900421**

Communication System: Generic GSM; Frequency: 836.6 MHz; Duty Cycle: 1:8

Medium parameters used: 836.6 MHz;  $\sigma = 0.895$  S/m;  $\epsilon_r = 43.121$ ;  $\rho = 1000$  kg/m<sup>3</sup>

Phantom section: Left Section

DASY5 Configuration:

- Probe: EX3DV4 - SN7431; ConvF(9.84, 9.84, 9.84); Calibrated: 2016/10/4;
- Sensor-Surface: 4mm (Mechanical Surface Detection)
- Electronics: DAE3 Sn379; Calibrated: 2016/10/4
- Phantom: SAM 1; Type: QD000P40CC; Serial: TP:1412
- Measurement SW: DASY52, Version 52.8 (8);

**Area Scan (61x101x1):** Interpolated grid: dx=1.500 mm, dy=1.500 mm

Maximum value of SAR (interpolated) = 0.492 W/kg

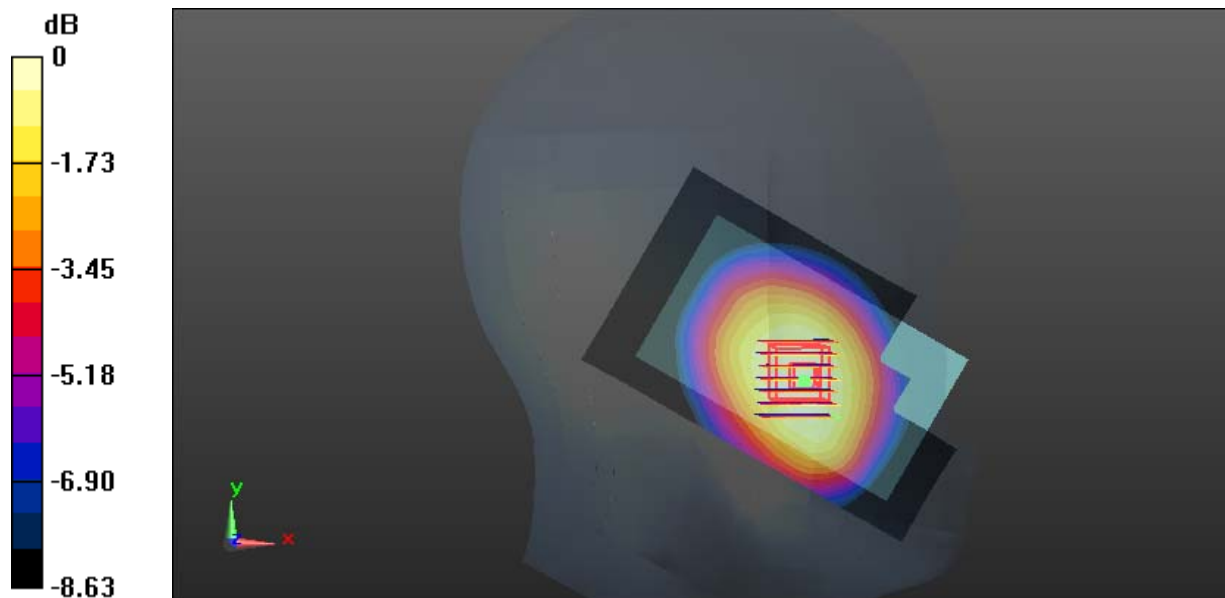
**Zoom Scan (7x7x7)/Cube 0:** Measurement grid: dx=5mm, dy=5mm, dz=5mm

Reference Value = 8.852 V/m; Power Drift = 0.06 dB

Peak SAR (extrapolated) = 0.589 W/kg

**SAR(1 g) = 0.466 W/kg; SAR(10 g) = 0.352 W/kg**

Maximum value of SAR (measured) = 0.491 W/kg



0 dB = 0.491 W/kg = -3.09 dBW/kg

**Test Plot 2#: GSM 850\_Head Left Tilt\_Middle Channel****DUT: Mobile phone; Type: JOY; Serial: 16081900421**

Communication System: Generic GSM; Frequency: 836.6 MHz; Duty Cycle: 1:8

Medium parameters used: 836.6 MHz;  $\sigma = 0.895$  S/m;  $\epsilon_r = 43.121$ ;  $\rho = 1000$  kg/m<sup>3</sup>

Phantom section: Left Section

DASY5 Configuration:

- Probe: EX3DV4 - SN7431; ConvF(9.84, 9.84, 9.84); Calibrated: 2016/10/4;
- Sensor-Surface: 4mm (Mechanical Surface Detection)
- Electronics: DAE3 Sn379; Calibrated: 2016/10/4
- Phantom: SAM 1; Type: QD000P40CC; Serial: TP:1412
- Measurement SW: DASY52, Version 52.8 (8);

**Area Scan (61x101x1):** Interpolated grid: dx=1.500 mm, dy=1.500 mm

Maximum value of SAR (interpolated) = 0.294 W/kg

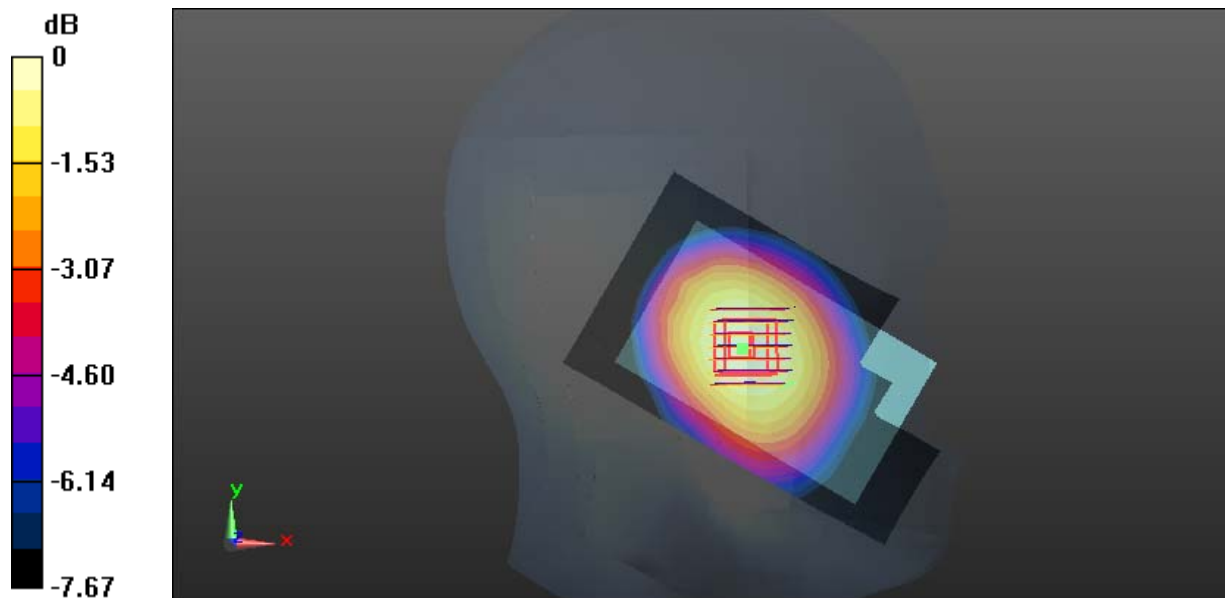
**Zoom Scan (7x7x7)/Cube 0:** Measurement grid: dx=5mm, dy=5mm, dz=5mm

Reference Value = 11.26 V/m; Power Drift = 0.04 dB

Peak SAR (extrapolated) = 0.349 W/kg

**SAR(1 g) = 0.278 W/kg; SAR(10 g) = 0.210 W/kg**

Maximum value of SAR (measured) = 0.293 W/kg



0 dB = 0.293 W/kg = -5.33 dBW/kg

**Test Plot 3#: GSM 850\_Head Right Cheek\_Middle Channel****DUT: Mobile phone; Type: JOY; Serial: 16081900421**

Communication System: Generic GSM; Frequency: 836.6 MHz; Duty Cycle: 1:8

Medium parameters used: 836.6 MHz;  $\sigma = 0.895$  S/m;  $\epsilon_r = 43.121$ ;  $\rho = 1000$  kg/m<sup>3</sup>

Phantom section: Right Section

DASY5 Configuration:

- Probe: EX3DV4 - SN7431; ConvF(9.84, 9.84, 9.84); Calibrated: 2016/10/4;
- Sensor-Surface: 4mm (Mechanical Surface Detection)
- Electronics: DAE3 Sn379; Calibrated: 2016/10/4
- Phantom: SAM 1; Type: QD000P40CC; Serial: TP:1412
- Measurement SW: DASY52, Version 52.8 (8);

**Area Scan (61x101x1):** Interpolated grid: dx=1.500 mm, dy=1.500 mm

Maximum value of SAR (interpolated) = 0.362 W/kg

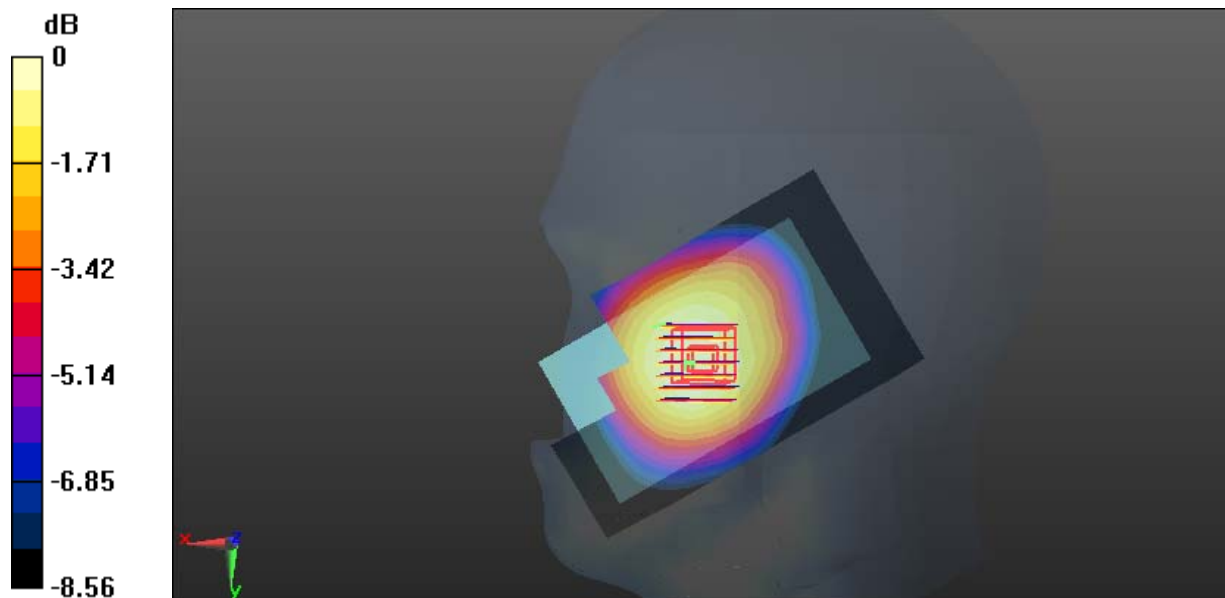
**Zoom Scan (7x7x7)/Cube 0:** Measurement grid: dx=5mm, dy=5mm, dz=5mm

Reference Value = 8.053 V/m; Power Drift = 0.11 dB

Peak SAR (extrapolated) = 0.416 W/kg

**SAR(1 g) = 0.345 W/kg; SAR(10 g) = 0.265 W/kg**

Maximum value of SAR (measured) = 0.365 W/kg



0 dB = 0.365 W/kg = -4.38 dBW/kg

**Test Plot 4#: GSM 850\_Head Right Tilt\_Middle Channel****DUT: Mobile phone; Type: JOY; Serial: 16081900421**

Communication System: Generic GSM; Frequency: 836.6 MHz; Duty Cycle: 1:8

Medium parameters used: 836.6 MHz;  $\sigma = 0.895$  S/m;  $\epsilon_r = 43.121$ ;  $\rho = 1000$  kg/m<sup>3</sup>

Phantom section: Right Section

DASY5 Configuration:

- Probe: EX3DV4 - SN7431; ConvF(9.84, 9.84, 9.84); Calibrated: 2016/10/4;
- Sensor-Surface: 4mm (Mechanical Surface Detection)
- Electronics: DAE3 Sn379; Calibrated: 2016/10/4
- Phantom: SAM 1; Type: QD000P40CC; Serial: TP:1412
- Measurement SW: DASY52, Version 52.8 (8);

**Area Scan (61x101x1):** Interpolated grid: dx=1.500 mm, dy=1.500 mm

Maximum value of SAR (interpolated) = 0.228 W/kg

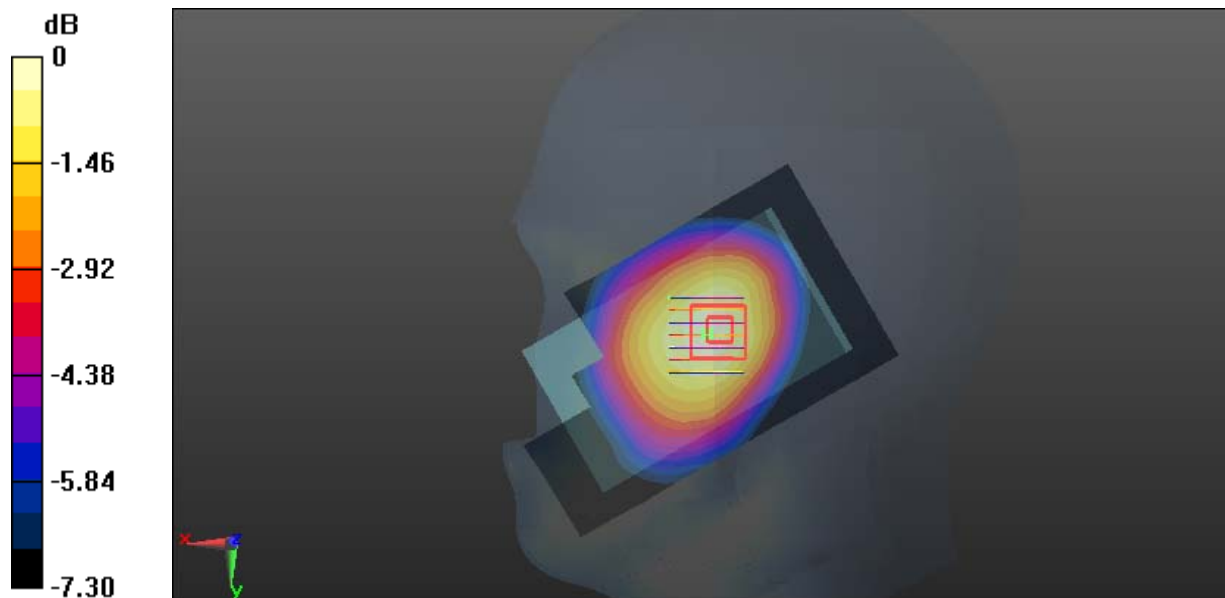
**Zoom Scan (7x7x7)/Cube 0:** Measurement grid: dx=5mm, dy=5mm, dz=5mm

Reference Value = 8.303 V/m; Power Drift = 0.01 dB

Peak SAR (extrapolated) = 0.286 W/kg

**SAR(1 g) = 0.230 W/kg; SAR(10 g) = 0.177 W/kg**

Maximum value of SAR (measured) = 0.241 W/kg



0 dB = 0.241 W/kg = -6.18 dBW/kg

**Test Plot 5#: GSM 850\_Body Back\_Low Channel****DUT: Mobile phone; Type: JOY; Serial: 16081900421**

Communication System: Generic GSM; Frequency: 824.2 MHz; Duty Cycle: 1:8

Medium parameters used: 824.2 MHz;  $\sigma = 0.958$  S/m;  $\epsilon_r = 55.467$ ;  $\rho = 1000$  kg/m<sup>3</sup>

Phantom section: Right Section

DASY5 Configuration:

- Probe: EX3DV4 - SN7431; ConvF(9.89, 9.89, 9.89); Calibrated: 2016/10/4;
- Sensor-Surface: 4mm (Mechanical Surface Detection)
- Electronics: DAE3 Sn379; Calibrated: 2016/10/4
- Phantom: Triple Flat Phantom 5.1C; Type: QD 000 P51 CA; Serial: 1130
- Measurement SW: DASY52, Version 52.8 (8);

**Area Scan (91x61x1):** Interpolated grid: dx=1.500 mm, dy=1.500 mm

Maximum value of SAR (interpolated) = 0.760 W/kg

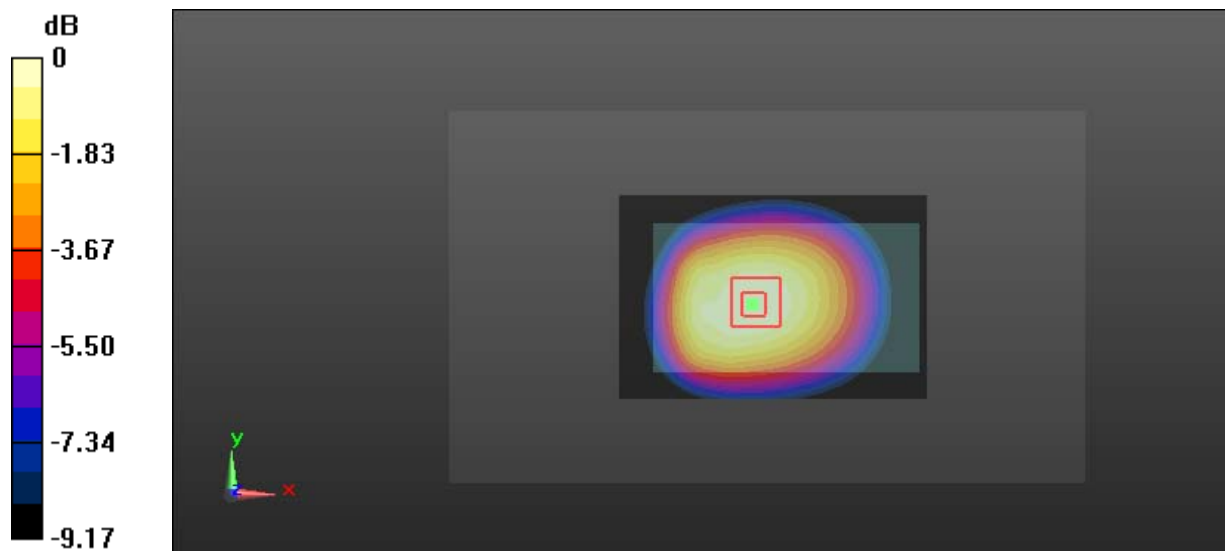
**Zoom Scan (7x7x7)/Cube 0:** Measurement grid: dx=5mm, dy=5mm, dz=5mm

Reference Value = 27.82 V/m; Power Drift = 0.04 dB

Peak SAR (extrapolated) = 0.915 W/kg

**SAR(1 g) = 0.715 W/kg; SAR(10 g) = 0.529 W/kg**

Maximum value of SAR (measured) = 0.756 W/kg



0 dB = 0.756 W/kg = -1.21 dBW/kg

**Test Plot 6#: GSM 850\_Body Back\_Middle Channel****DUT: Mobile phone; Type: JOY; Serial: 16081900421**

Communication System: Generic GSM; Frequency: 836.6 MHz; Duty Cycle: 1:8

Medium parameters used: 836.6 MHz;  $\sigma = 0.948$  S/m;  $\epsilon_r = 55.401$ ;  $\rho = 1000$  kg/m<sup>3</sup>

Phantom section: Right Section

DASY5 Configuration:

- Probe: EX3DV4 - SN7431; ConvF(9.89, 9.89, 9.89); Calibrated: 2016/10/4;
- Sensor-Surface: 4mm (Mechanical Surface Detection)
- Electronics: DAE3 Sn379; Calibrated: 2016/10/4
- Phantom: Triple Flat Phantom 5.1C; Type: QD 000 P51 CA; Serial: 1130
- Measurement SW: DASY52, Version 52.8 (8);

**Area Scan (91x61x1):** Interpolated grid: dx=1.500 mm, dy=1.500 mm

Maximum value of SAR (interpolated) = 0.894 W/kg

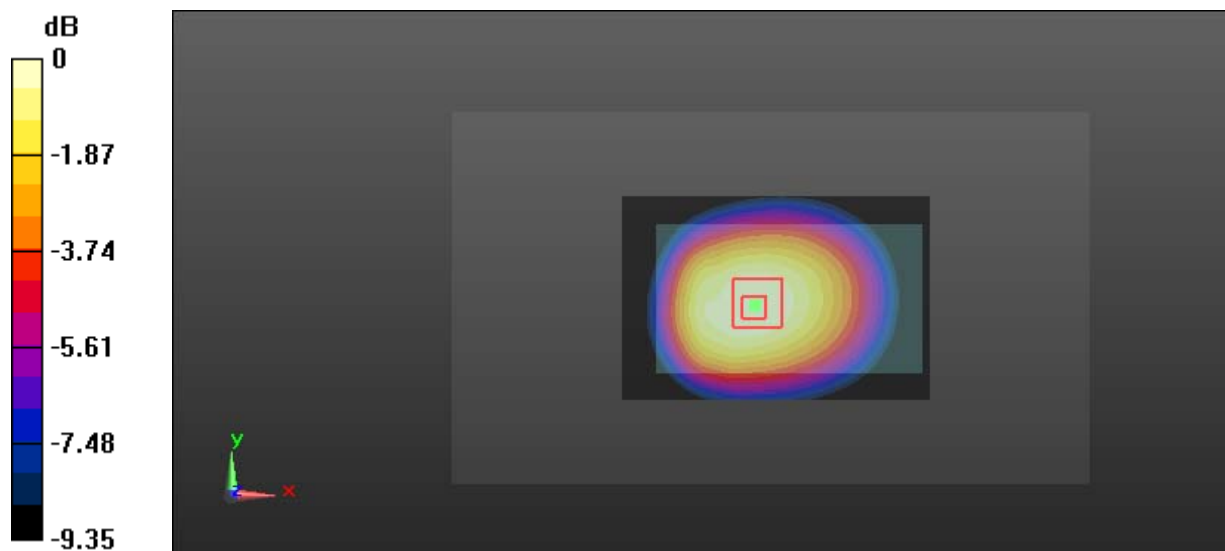
**Zoom Scan (7x7x7)/Cube 0:** Measurement grid: dx=5mm, dy=5mm, dz=5mm

Reference Value = 30.10 V/m; Power Drift = -0.04 dB

Peak SAR (extrapolated) = 1.09 W/kg

**SAR(1 g) = 0.838 W/kg; SAR(10 g) = 0.616 W/kg**

Maximum value of SAR (measured) = 0.883 W/kg



0 dB = 0.883 W/kg = -0.54 dBW/kg

**Test Plot 7#: GSM 850\_Body Back\_High Channel****DUT: Mobile phone; Type: JOY; Serial: 16081900421**

Communication System: Generic GSM; Frequency: 848.8 MHz; Duty Cycle: 1:8

Medium parameters used: 848.8 MHz;  $\sigma = 0.986$  S/m;  $\epsilon_r = 55.243$ ;  $\rho = 1000$  kg/m<sup>3</sup>

Phantom section: Right Section

DASY5 Configuration:

- Probe: EX3DV4 - SN7431; ConvF(9.89, 9.89, 9.89); Calibrated: 2016/10/4;
- Sensor-Surface: 4mm (Mechanical Surface Detection)
- Electronics: DAE3 Sn379; Calibrated: 2016/10/4
- Phantom: Triple Flat Phantom 5.1C; Type: QD 000 P51 CA; Serial: 1130
- Measurement SW: DASY52, Version 52.8 (8);

**Area Scan (91x61x1):** Interpolated grid: dx=1.500 mm, dy=1.500 mm

Maximum value of SAR (interpolated) = 0.820 W/kg

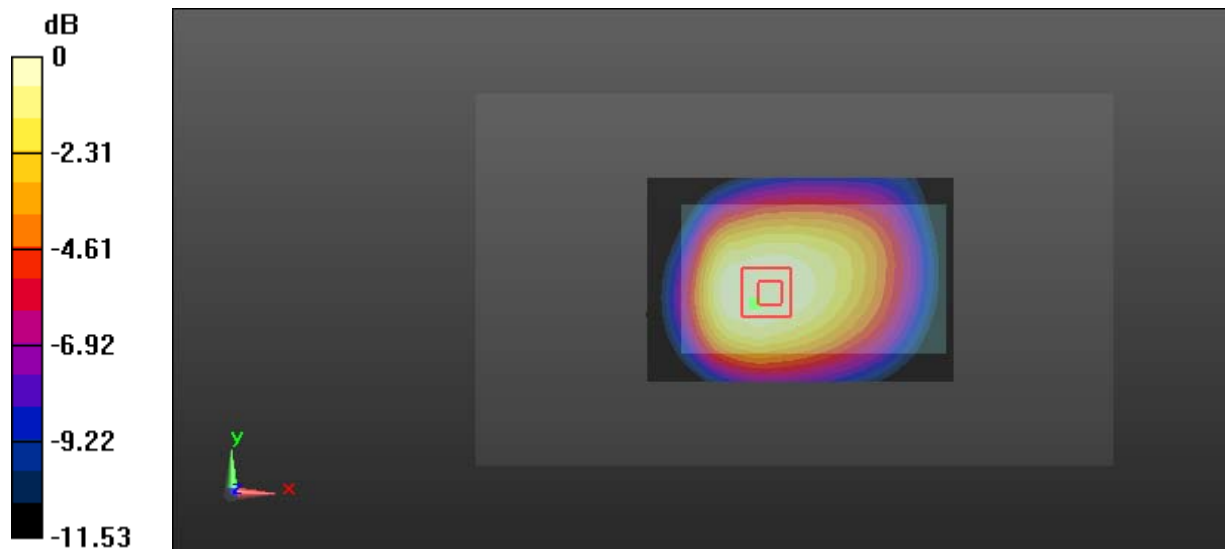
**Zoom Scan (7x7x7)/Cube 0:** Measurement grid: dx=5mm, dy=5mm, dz=5mm

Reference Value = 28.05 V/m; Power Drift = -0.06 dB

Peak SAR (extrapolated) = 1.08 W/kg

**SAR(1 g) = 0.776 W/kg; SAR(10 g) = 0.557 W/kg**

Maximum value of SAR (measured) = 0.820 W/kg



0 dB = 0.820 W/kg = -0.86 dBW/kg

**Test Plot 8#: GSM 1900\_Head Left Cheek\_Middle Channel****DUT: Mobile phone; Type: JOY; Serial: 16081900421**

Communication System: Generic GSM; Frequency: 1880 MHz; Duty Cycle: 1:8  
Medium parameters used: 1880 MHz;  $\sigma = 1.438$  S/m;  $\epsilon_r = 40.074$ ;  $\rho = 1000$  kg/m<sup>3</sup>  
Phantom section: Left Section

DASY5 Configuration:

- Probe: EX3DV4 - SN7431; ConvF(8.18, 8.18, 8.18); Calibrated: 2016/10/4;
- Sensor-Surface: 4mm (Mechanical Surface Detection)
- Electronics: DAE3 Sn379; Calibrated: 2016/10/4
- Phantom: SAM 1; Type: QD000P40CC; Serial: TP:1412
- Measurement SW: DASY52, Version 52.8 (8);

**Area Scan (61x101x1):** Interpolated grid: dx=1.500 mm, dy=1.500 mm

Maximum value of SAR (interpolated) = 0.354 W/kg

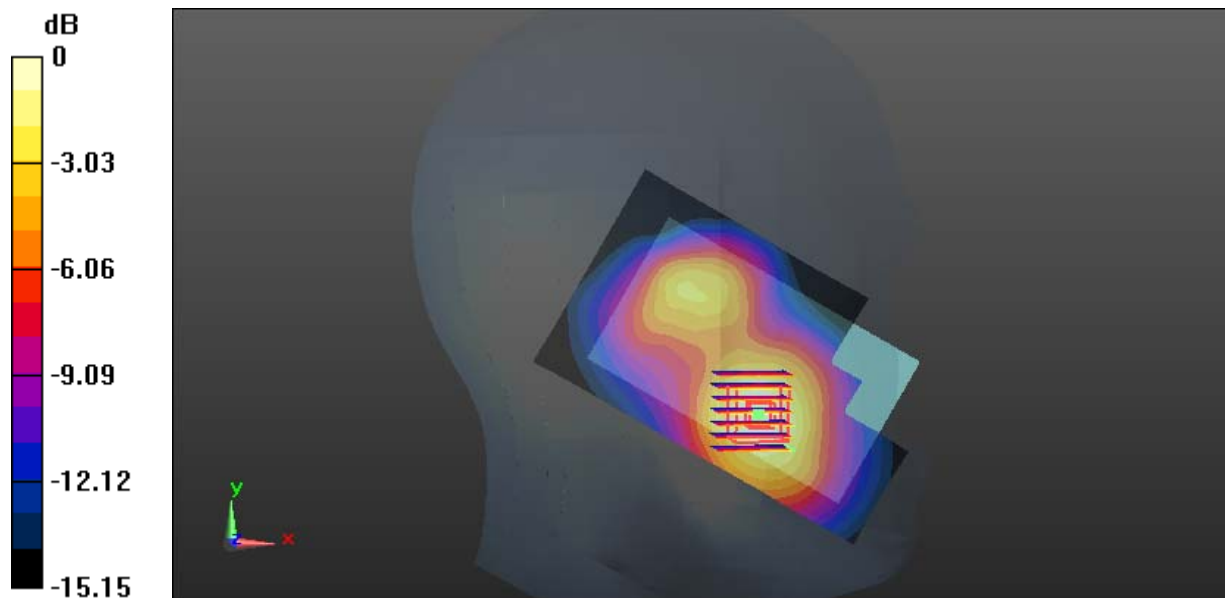
**Zoom Scan (7x7x7)/Cube 0:** Measurement grid: dx=5mm, dy=5mm, dz=5mm

Reference Value = 6.683 V/m; Power Drift = 0.08 dB

Peak SAR (extrapolated) = 0.506 W/kg

**SAR(1 g) = 0.323 W/kg; SAR(10 g) = 0.192 W/kg**

Maximum value of SAR (measured) = 0.356 W/kg



0 dB = 0.356 W/kg = -4.49 dBW/kg



**Test Plot 9#: GSM 1900\_Head Left Tilt\_Middle Channel****DUT: Mobile phone; Type: JOY; Serial: 16081900421**

Communication System: Generic GSM; Frequency: 1880 MHz; Duty Cycle: 1:8

Medium parameters used: 1880 MHz;  $\sigma = 1.438$  S/m;  $\epsilon_r = 40.074$ ;  $\rho = 1000$  kg/m<sup>3</sup>

Phantom section: Left Section

DASY5 Configuration:

- Prprobe: EX3DV4 - SN7431; ConvF(8.18, 8.18, 8.18); Calibrated: 2016/10/4;
- Sensor-Surface: 4mm (Mechanical Surface Detection)
- Electronics: DAE3 Sn379; Calibrated: 2016/10/4
- Phantom: SAM 1; Type: QD000P40CC; Serial: TP:1412
- Measurement SW: DASY52, Version 52.8 (8);

**Area Scan (61x101x1):** Interpolated grid: dx=1.500 mm, dy=1.500 mm

Maximum value of SAR (interpolated) = 0.187 W/kg

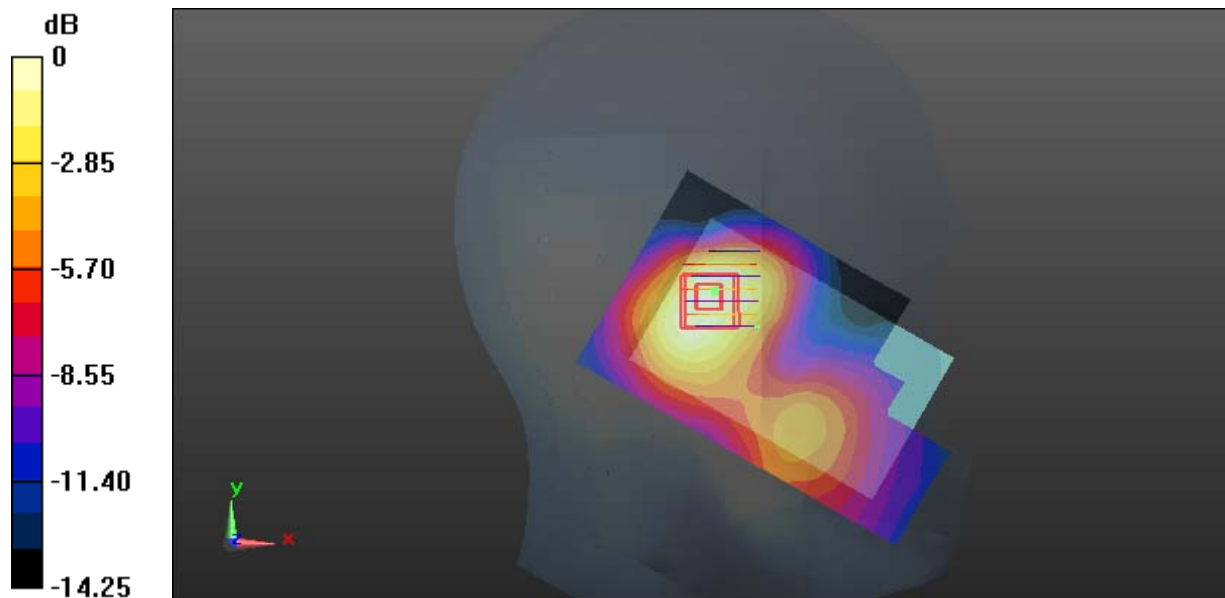
**Zoom Scan (7x7x7)/Cube 0:** Measurement grid: dx=5mm, dy=5mm, dz=5mm

Reference Value = 9.250 V/m; Power Drift = -0.01 dB

Peak SAR (extrapolated) = 0.228 W/kg

**SAR(1 g) = 0.148 W/kg; SAR(10 g) = 0.090 W/kg**

Maximum value of SAR (measured) = 0.160 W/kg



0 dB = 0.160 W/kg = -7.96 dBW/kg

**Test Plot 10#: GSM 1900\_Head Right Cheek\_Middle Channel****DUT: Mobile phone; Type: JOY; Serial: 16081900421**

Communication System: Generic GSM; Frequency: 1880 MHz; Duty Cycle: 1:8

Medium parameters used: 1880 MHz;  $\sigma = 1.438$  S/m;  $\epsilon_r = 40.074$ ;  $\rho = 1000$  kg/m<sup>3</sup>

Phantom section: Right Section

DASY5 Configuration:

- Probe: EX3DV4 - SN7431; ConvF(8.18, 8.18, 8.18); Calibrated: 2016/10/4;
- Sensor-Surface: 4mm (Mechanical Surface Detection)
- Electronics: DAE3 Sn379; Calibrated: 2016/10/4
- Phantom: SAM 1; Type: QD000P40CC; Serial: TP:1412
- Measurement SW: DASY52, Version 52.8 (8);

**Area Scan (61x101x1):** Interpolated grid: dx=1.500 mm, dy=1.500 mm

Maximum value of SAR (interpolated) = 0.212 W/kg

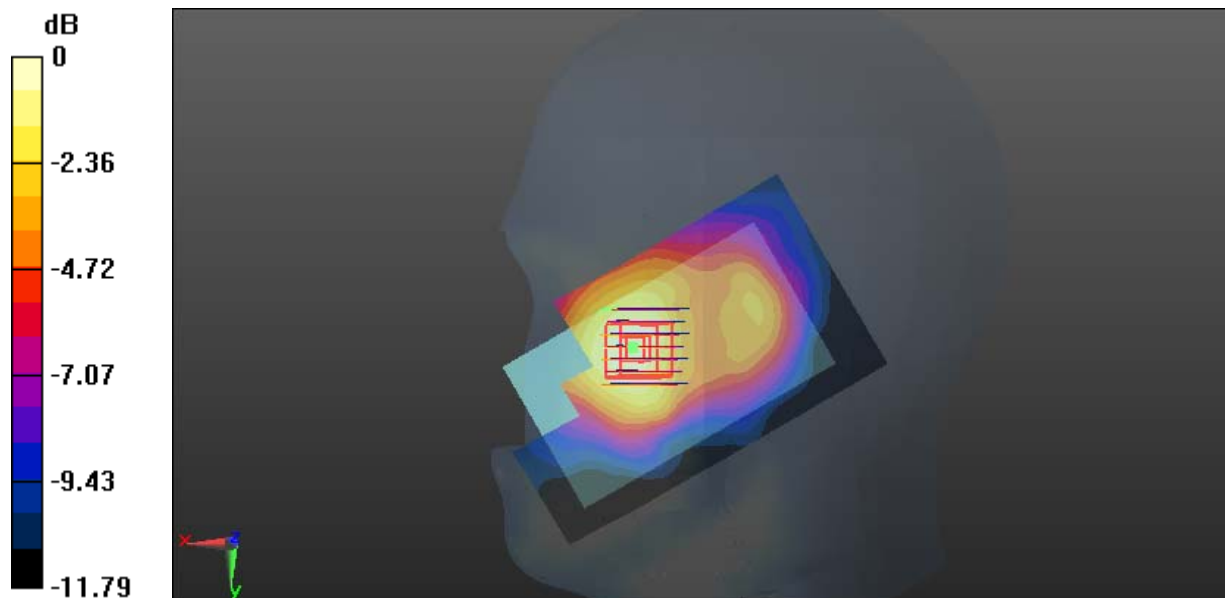
**Zoom Scan (7x7x7)/Cube 0:** Measurement grid: dx=5mm, dy=5mm, dz=5mm

Reference Value = 6.403 V/m; Power Drift = 0.03 dB

Peak SAR (extrapolated) = 0.306 W/kg

**SAR(1 g) = 0.205 W/kg; SAR(10 g) = 0.132 W/kg**

Maximum value of SAR (measured) = 0.219 W/kg



0 dB = 0.219 W/kg = -6.60 dBW/kg

**Test Plot 11#: GSM 1900\_Head Right Tilt\_Middle Channel****DUT: Mobile phone; Type: JOY; Serial: 16081900421**

Communication System: Generic GSM; Frequency: 1880 MHz; Duty Cycle: 1:8

Medium parameters used: 1880 MHz;  $\sigma = 1.438$  S/m;  $\epsilon_r = 40.074$ ;  $\rho = 1000$  kg/m<sup>3</sup>

Phantom section: Right Section

DASY5 Configuration:

- Probe: EX3DV4 - SN7431; ConvF(8.18, 8.18, 8.18); Calibrated: 2016/10/4;
- Sensor-Surface: 4mm (Mechanical Surface Detection)
- Electronics: DAE3 Sn379; Calibrated: 2016/10/4
- Phantom: SAM 1; Type: QD000P40CC; Serial: TP:1412
- Measurement SW: DASY52, Version 52.8 (8);

**Area Scan (61x101x1):** Interpolated grid: dx=1.500 mm, dy=1.500 mm

Maximum value of SAR (interpolated) = 0.169 W/kg

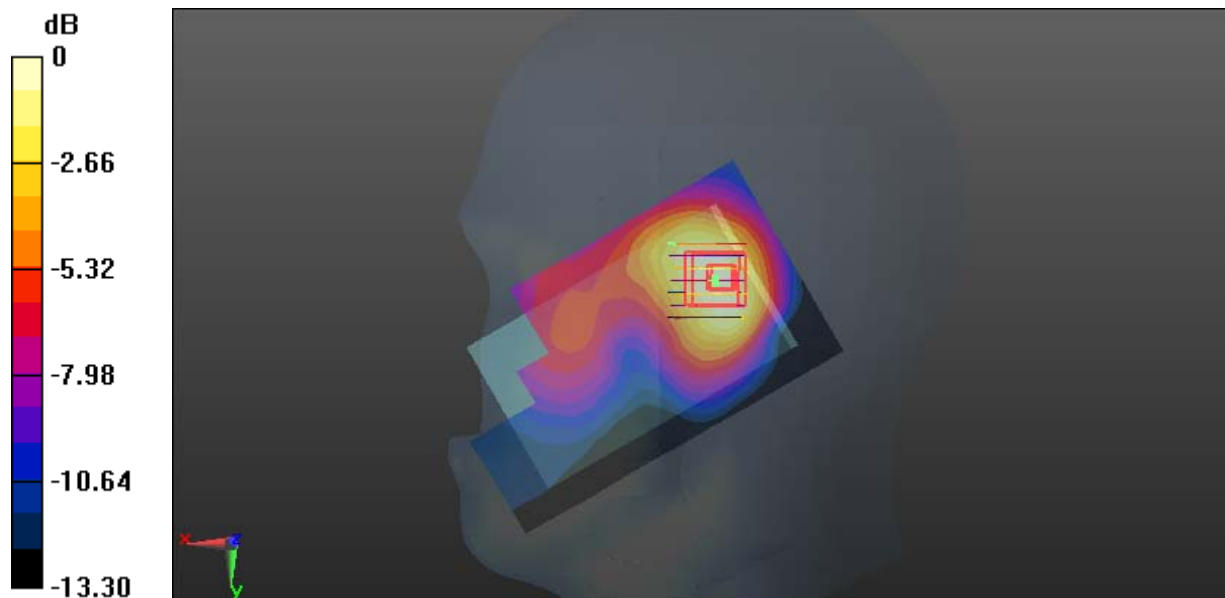
**Zoom Scan (7x7x7)/Cube 0:** Measurement grid: dx=5mm, dy=5mm, dz=5mm

Reference Value = 9.637 V/m; Power Drift = 0.01 dB

Peak SAR (extrapolated) = 0.234 W/kg

**SAR(1 g) = 0.147 W/kg; SAR(10 g) = 0.088 W/kg**

Maximum value of SAR (measured) = 0.159 W/kg



0 dB = 0.159 W/kg = -7.99 dBW/kg

**Test Plot 12#: GSM 1900\_Body Back\_Middle Channel****DUT: Mobile phone; Type: JOY; Serial: 16081900421**

Communication System: Generic GSM; Frequency: 1880 MHz; Duty Cycle: 1:8  
Medium parameters used: 1880 MHz;  $\sigma = 1.557$  S/m;  $\epsilon_r = 51.692$ ;  $\rho = 1000$  kg/m<sup>3</sup>  
Phantom section: Left Section

DASY5 Configuration:

- Probe: EX3DV4 - SN7431; ConvF(7.98, 7.98, 7.98); Calibrated: 2016/10/4;
- Sensor-Surface: 4mm (Mechanical Surface Detection)
- Electronics: DAE3 Sn379; Calibrated: 2016/10/4
- Phantom: Triple Flat Phantom 5.1C; Type: QD 000 P51 CA; Serial: 1130
- Measurement SW: DASY52, Version 52.8 (8);

**Area Scan (91x61x1):** Interpolated grid: dx=1.500 mm, dy=1.500 mm

Maximum value of SAR (interpolated) = 0.823 W/kg

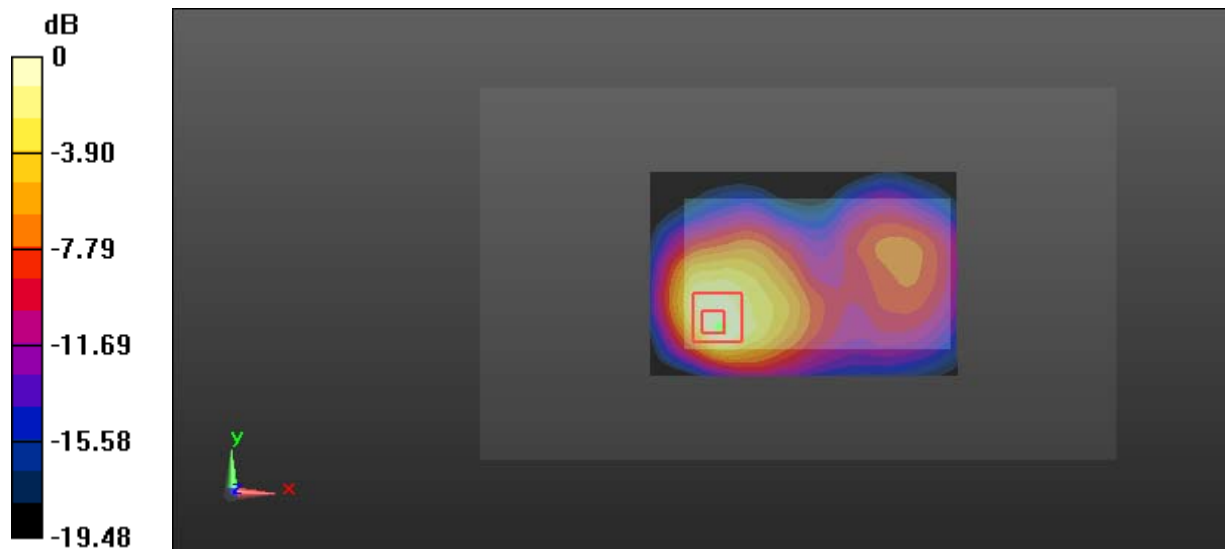
**Zoom Scan (7x7x7)/Cube 0:** Measurement grid: dx=5mm, dy=5mm, dz=5mm

Reference Value = 8.607 V/m; Power Drift = 0.06 dB

Peak SAR (extrapolated) = 1.34 W/kg

**SAR(1 g) = 0.674 W/kg; SAR(10 g) = 0.338 W/kg**

Maximum value of SAR (measured) = 0.758 W/kg



0 dB = 0.758 W/kg = -1.20 dBW/kg