

FCC TEST REPORT

Product Name: Feature Phone
Trade Mark: BLU
Model No.: JENNY 2.4
Report Number: 180714002RFM-1
Test Standards: FCC 47 CFR Part 22 Subpart H
FCC 47 CFR Part 2
FCC ID: YHLBLUJENNY24
Test Result: PASS
Date of Issue: July 24, 2018

Prepared for:

BLU Products, Inc.
10814 NW 33rd St#100 Doral, FL33172

Prepared by:

Shenzhen UnionTrust Quality and Technology Co., Ltd.
16/F, Block A, Building 6, Baoneng Science and Technology Park,
Qingxiang Road No.1, Longhua New District, Shenzhen, China
TEL: +86-755-2823 0888
FAX: +86-755-2823 0886

Tested by: Henry Lu
Henry Lu
Project Engineer

Reviewed by: Kevin Liang
Kevin Liang
Assistant Manager

Approved by: Billy Li
Billy Li
Technical Director

Date: July 24, 2018



Shenzhen UnionTrust Quality and Technology Co., Ltd.

Version

| Version No. | Date | Description |
|-------------|---------------|-------------|
| V1.0 | July 24, 2018 | Original |

**Shenzhen UnionTrust Quality and Technology Co., Ltd.**

Address: 16/F, Block A, Building 6, Baoneng Science and Technology Park, Qingxiang Road No.1, Longhua New District, Shenzhen, China

Tel: +86-755-28230888

Fax: +86-755-28230886

E-mail: info@uttlab.com

[Http://www.uttlab.com](http://www.uttlab.com)

CONTENTS

| | |
|--------------------------------------------------------------------|-----------|
| 1. GENERAL INFORMATION | 4 |
| 1.1 CLIENT INFORMATION | 4 |
| 1.2 EUT INFORMATION | 4 |
| 1.2.1 GENERAL DESCRIPTION OF EUT | 4 |
| 1.2.2 DESCRIPTION OF ACCESSORIES..... | 4 |
| 1.3 PRODUCT SPECIFICATION SUBJECTIVE TO THIS STANDARD | 5 |
| 1.4 DESCRIPTION OF SUPPORT UNITS | 5 |
| 1.5 TEST LOCATION | 5 |
| 1.6 TEST FACILITY | 5 |
| 1.7 DEVIATION FROM STANDARDS | 6 |
| 1.8 ABNORMALITIES FROM STANDARD CONDITIONS | 6 |
| 1.9 OTHER INFORMATION REQUESTED BY THE CUSTOMER | 6 |
| 1.10 MEASUREMENT UNCERTAINTY | 6 |
| 2. TEST SUMMARY | 7 |
| 3. EQUIPMENT LIST | 8 |
| 4. TEST CONFIGURATION | 9 |
| 4.1 ENVIRONMENTAL CONDITIONS FOR TESTING | 9 |
| 4.1.1 NORMAL OR EXTREME TEST CONDITIONS | 9 |
| 4.2 TEST SETUP | 10 |
| 4.2.1 FOR RADIATED EMISSIONS TEST SETUP | 10 |
| 4.2.2 FOR CONDUCTED RF TEST SETUP | 12 |
| 4.3 TEST CHANNELS | 13 |
| 4.4 SYSTEM TEST CONFIGURATION | 13 |
| 4.5 PRE-SCAN | 13 |
| 5. RADIO TECHNICAL REQUIREMENTS SPECIFICATION | 14 |
| 5.1 REFERENCE DOCUMENTS FOR TESTING | 14 |
| 5.2 EFFECTIVE RADIATED POWER (ERP) | 14 |
| 5.3 CONDUCTED OUTPUT POWER | 16 |
| 5.4 PEAK-TO-AVERAGE RATIO | 17 |
| 5.5 99%&26dB BANDWIDTH | 19 |
| 5.6 BAND EDGE AT ANTENNA TERMINALS | 21 |
| 5.7 SPURIOUS EMISSIONS AT ANTENNA TERMINALS | 23 |
| 5.8 FIELD STRENGTH OF SPURIOUS RADIATION | 25 |
| 5.9 FREQUENCY STABILITY | 32 |
| APPENDIX 1 PHOTOS OF TEST SETUP | 33 |
| APPENDIX 2 PHOTOS OF EUT CONSTRUCTIONAL DETAILS | 33 |

1. GENERAL INFORMATION

1.1 CLIENT INFORMATION

| | |
|---------------------------------|-------------------------------------|
| Applicant: | BLU Products, Inc. |
| Address of Applicant: | 10814 NW 33rd St#100 Doral, FL33172 |
| Manufacturer: | BLU Products, Inc. |
| Address of Manufacturer: | 10814 NW 33rd St#100 Doral, FL33172 |

1.2 EUT INFORMATION

1.2.1 General Description of EUT

| | | |
|-------------------------------|-----------------------------------------------------------------------|--------------------|
| Product Name: | Feature Phone | |
| Model No.: | JENNY 2.4 | |
| Add. Model No.: | N/A | |
| Trade Mark: | BLU | |
| DUT Stage: | Identical Prototype | |
| EUT Supports Function: | GSM Bands: | GSM850/1900 |
| | 2.4 GHz ISM Band: | Bluetooth V2.1+EDR |
| Software Version: | BLU_J070_V03.00_GENERIC_ANATEL_20180702 | |
| Hardware Version: | FF253-41B | |
| IMEI Code: | 869748022383073, 869748022383081; 869748022383057, 869748022383065 | |
| Sample Received Date: | July 15, 2018 | |
| Sample Tested Date: | July 15, 2018 to July 23, 2018 | |

1.2.2 Description of Accessories

| Adapter | |
|--------------------|-------------------------------------|
| Trade Mark: | BLU |
| Model No.: | US-NB-0700 |
| Input: | 100-240 V~50/60 Hz 0.15 A |
| Output: | 5.0 V = 700 mA |
| AC Cable: | N/A |
| DC Cable: | 1 Meter, Unshielded without ferrite |

| Battery | |
|------------------------|----------------------------------|
| Trade Mark: | BLU |
| Model No.: | N5C100L |
| Battery Type: | Lithium-ion Rechargeable Battery |
| Rated Voltage: | 3.7 Vdc |
| Rated Capacity: | 1000 mAh |

1.3 PRODUCT SPECIFICATION SUBJECTIVE TO THIS STANDARD

| | | |
|----------------------------------|------------------|-----------------|
| Support Networks: | GSM, GPRS | |
| Type of Modulation: | GSM/GPRS: | GMSK |
| Frequency Range: | GSM/GPRS 850: | 824.2-848.8 MHz |
| Max RF Output Power: | GSM/GPRS 850: | 32.27dBm |
| Type of Emission: | GSM/GPRS 850: | 245KGXW |
| Antenna Type: | PIFA Antenna | |
| Antenna Gain: | -0.66 dBi | |
| GPRS Class: | Class 12 | |
| Normal Test Voltage: | 3.7 Vdc | |
| Extreme Test Voltage: | 3.5 to 4.25Vdc | |
| Extreme Test Temperature: | -30 °C to +50 °C | |

1.4 DESCRIPTION OF SUPPORT UNITS

The EUT has been tested with associated equipment below.

1) Support Equipment

| Description | Manufacturer | Model No. | Serial Number | Supplied by |
|-------------|--------------|-----------|---------------|-------------|
| N/A | N/A | N/A | N/A | N/A |

2) Support Cable

| Cable No. | Description | Connector | Length | Supplied by |
|-----------|---------------|-----------|------------|-------------|
| 1 | Antenna Cable | SMA | 0.30 Meter | UnionTrust |

1.5 TEST LOCATION

Shenzhen UnionTrust Quality and Technology Co., Ltd.

Address: 16/F, Block A, Building 6, Baoneng Science and Technology Park, Qingxiang Road No.1, Longhua New District, Shenzhen, China 518109
 Telephone: +86 (0) 755 2823 0888
 Fax: +86 (0) 755 2823 0886

1.6 TEST FACILITY

The test facility is recognized, certified, or accredited by the following organizations:

CNAS-Lab Code: L9069

The measuring equipment utilized to perform the tests documented in this report has been calibrated once a year or in accordance with the manufacturer's recommendations, and is traceable under the ISO/IEC/EN 17025 to international or national standards. Equipment has been calibrated by accredited calibration laboratories.

IC-Registration No.: 21600-1

The 3m Semi-anechoic chamber of Shenzhen UnionTrust Quality and Technology Co., Ltd. has been registered by Certification and Engineering Bureau of Industry Canada for radio equipment testing with Registration No.: 21600-1.

A2LA-Lab Certificate No.: 4312.01

Shenzhen UnionTrust Quality and Technology Co., Ltd.

Address: 16/F, Block A, Building 6, Baoneng Science and Technology Park, Qingxiang Road No.1, Longhua New District, Shenzhen, China
 Tel: +86-755-28230888 Fax: +86-755-28230886 E-mail: info@uttlab.com

[Http://www.uttlab.com](http://www.uttlab.com)

Shenzhen UnionTrust Quality and Technology Co., Ltd. has been accredited by A2LA for technical competence in the field of electrical testing, and proved to be in compliance with ISO/IEC 17025: 2005 General Requirements for the Competence of Testing and Calibration Laboratories and any additional program requirements in the identified field of testing.

FCC Accredited Lab.

Designation Number: CN1194

Test Firm Registration Number: 259480

1.7 DEVIATION FROM STANDARDS

None.

1.8 ABNORMALITIES FROM STANDARD CONDITIONS

None.

1.9 OTHER INFORMATION REQUESTED BY THE CUSTOMER

None.

1.10 MEASUREMENT UNCERTAINTY

Where relevant, the following measurement uncertainty levels have been estimated for tests performed on the Product as specified in CISPR 16-4-2. This uncertainty represents an expanded uncertainty expressed at approximately the 95% confidence level using a coverage factor of k=2.

| No. | Item | Measurement Uncertainty |
|-----|---------------------------------|-------------------------|
| 1 | Conducted emission 9KHz-150KHz | ±3.8 dB |
| 2 | Conducted emission 150KHz-30MHz | ±3.4 dB |
| 3 | Radiated emission 9KHz-30MHz | ±4.9 dB |
| 4 | Radiated emission 30MHz-1GHz | ±4.7 dB |
| 5 | Radiated emission 1GHz-18GHz | ±5.1 dB |
| 6 | Radiated emission 18GHz-26GHz | ±5.2 dB |
| 7 | Radiated emission 26GHz-40GHz | ±5.2 dB |

2. TEST SUMMARY

| FCC 47 CFR Part 22 Subpart H Test Cases | | | |
|-----------------------------------------|-------------------------------------------------------|-----------------------------------------|--------|
| Test Item | Test Requirement | Test Method | Result |
| Effective Radiated Power (ERP) | FCC 47 CFR Part 2.1046(a) & FCC 47 CFR Part 22.913(a) | ANSI/TIA-603-E-2016 & KDB 971168 D01v03 | PASS |
| Conducted Output Power | FCC 47 CFR Part 2.1046(a) & FCC 47 CFR Part 22.913(a) | ANSI/TIA-603-E-2016 & KDB 971168 D01v03 | PASS |
| Peak-to-average ratio | FCC 47 CFR Part 22.913(a) | ANSI/TIA-603-E-2016 & KDB 971168 D01v03 | PASS |
| 99%&26dB Bandwidth | FCC 47 CFR Part 2.1049(h) | ANSI/TIA-603-E-2016 & KDB 971168 D01v03 | PASS |
| Band Edge at antenna terminals | FCC 47 CFR Part 2.1051 & FCC 47 CFR Part 22.917(a) | ANSI/TIA-603-E-2016 & KDB 971168 D01v03 | PASS |
| Spurious emissions at antenna terminals | FCC 47 CFR Part 2.1051 & FCC 47 CFR Part 22.917(a)(b) | ANSI/TIA-603-E-2016 & KDB 971168 D01v03 | PASS |
| Field strength of spurious radiation | FCC 47 CFR Part 2.1053 & FCC 47 CFR Part 22.917(a)(b) | ANSI/TIA-603-E-2016 & KDB 971168 D01v03 | PASS |
| Frequency stability | FCC 47 CFR Part 2.1055 & FCC 47 CFR Part 22.355 | ANSI/TIA-603-E-2016 & KDB 971168 D01v03 | PASS |

3. EQUIPMENT LIST

| Radiated Emission Test Equipment List | | | | | | |
|---------------------------------------|-------------------------------------|--------------|-----------|----------------------------|-------------------------|-----------------------------|
| Used | Equipment | Manufacturer | Model No. | Serial Number | Cal. date (mm dd, yyyy) | Cal. Due date (mm dd, yyyy) |
| <input checked="" type="checkbox"/> | 3M Chamber & Accessory Equipment | ETS-LINDGREN | 3M | N/A | Dec. 20, 2015 | Dec. 19, 2018 |
| <input checked="" type="checkbox"/> | Receiver | R&S | ESIB26 | 100114 | Dec. 10, 2017 | Dec. 10, 2018 |
| <input type="checkbox"/> | EXA Spectrum Analyzer | KEYSIGHT | N9010A | MY51440197 | Dec.10, 2017 | Dec. 10, 2018 |
| <input type="checkbox"/> | Loop Antenna | ETS-LINDGREN | 6502 | 00202525 | Dec. 22, 2017 | Dec. 22, 2018 |
| <input checked="" type="checkbox"/> | Broadband Antenna | ETS-LINDGREN | 3142E | 00201566 | Dec. 17, 2017 | Dec. 17, 2018 |
| <input checked="" type="checkbox"/> | Preamplifier | HP | 8447F | 2805A02960 | Dec. 10, 2017 | Dec. 10, 2018 |
| <input checked="" type="checkbox"/> | Broadband Antenna (Pre-amplifier) | ETS-LINDGREN | 3142E-PA | 00201891 | May 19, 2018 | May 19, 2019 |
| <input checked="" type="checkbox"/> | Horn Antenna | ETS-LINDGREN | 3117 | 00164202 | Dec. 17, 2017 | Dec. 17, 2018 |
| <input checked="" type="checkbox"/> | Horn Antenna (Pre-amplifier) | ETS-LINDGREN | 3117-PA | 00201874 | May 22, 2018 | May 22, 2019 |
| <input type="checkbox"/> | Horn Antenna | ETS-LINDGREN | 3116C | 00200180 | May 20, 2018 | May 20, 2019 |
| <input type="checkbox"/> | Horn Antenna (Pre-amplifier) | ETS-LINDGREN | 3116C-PA | 00202652 | Dec. 17, 2017 | Dec. 17, 2018 |
| <input checked="" type="checkbox"/> | Multi device Controller | ETS-LINDGREN | 7006-001 | 00160105 | N/A | N/A |
| <input checked="" type="checkbox"/> | Wideband Radio Communication Tester | R&S | CMW500 | 116254 | June 07, 2018 | June 07, 2019 |
| <input checked="" type="checkbox"/> | Test Software | Audix | e3 | Software Version: 9.160323 | | |

| 2/3/4G RF Test System Equipment List | | | | | | |
|--------------------------------------|--------------------------------------|--------------|--------------|------------------------|-------------------------|-----------------------------|
| Used | Equipment | Manufacturer | Model No. | Serial Number | Cal. date (mm dd, yyyy) | Cal. Due date (mm dd, yyyy) |
| <input type="checkbox"/> | Spectrum Analyzer | R&S | FSP 13 | 1164.4391.13 | June 06, 2018 | June 06, 2019 |
| <input checked="" type="checkbox"/> | Receiver | R&S | ESR7 | 1316.3003K07-101181-K3 | Dec. 10, 2017 | Dec. 10, 2018 |
| <input checked="" type="checkbox"/> | EXA Spectrum Analyzer | KEYSIGHT | N9010A | MY51440197 | Dec.10, 2017 | Dec. 10, 2018 |
| <input checked="" type="checkbox"/> | Wideband Radio Communication Tester | R&S | CMW500 | 116254 | June 07, 2018 | June 07, 2019 |
| <input type="checkbox"/> | Universal Radio Communication Tester | R&S | CMU200 | 114713 | Dec. 10, 2017 | Dec. 10, 2018 |
| <input checked="" type="checkbox"/> | DC Source | KIKUSUI | PWR400L | LK003024 | Sep. 14, 2017 | Sep. 13, 2018 |
| <input type="checkbox"/> | Temp & Humidity chamber | Espec | GL(U)04KA(W) | 16921H201P3 | Sep. 14, 2017 | Sep. 13, 2018 |
| <input checked="" type="checkbox"/> | Temp & Humidity chamber | Votisch | VT4002 | 58566133290020 | June 05, 2018 | June 05, 2019 |

4. TEST CONFIGURATION

4.1 ENVIRONMENTAL CONDITIONS FOR TESTING

4.1.1 Normal or Extreme Test Conditions

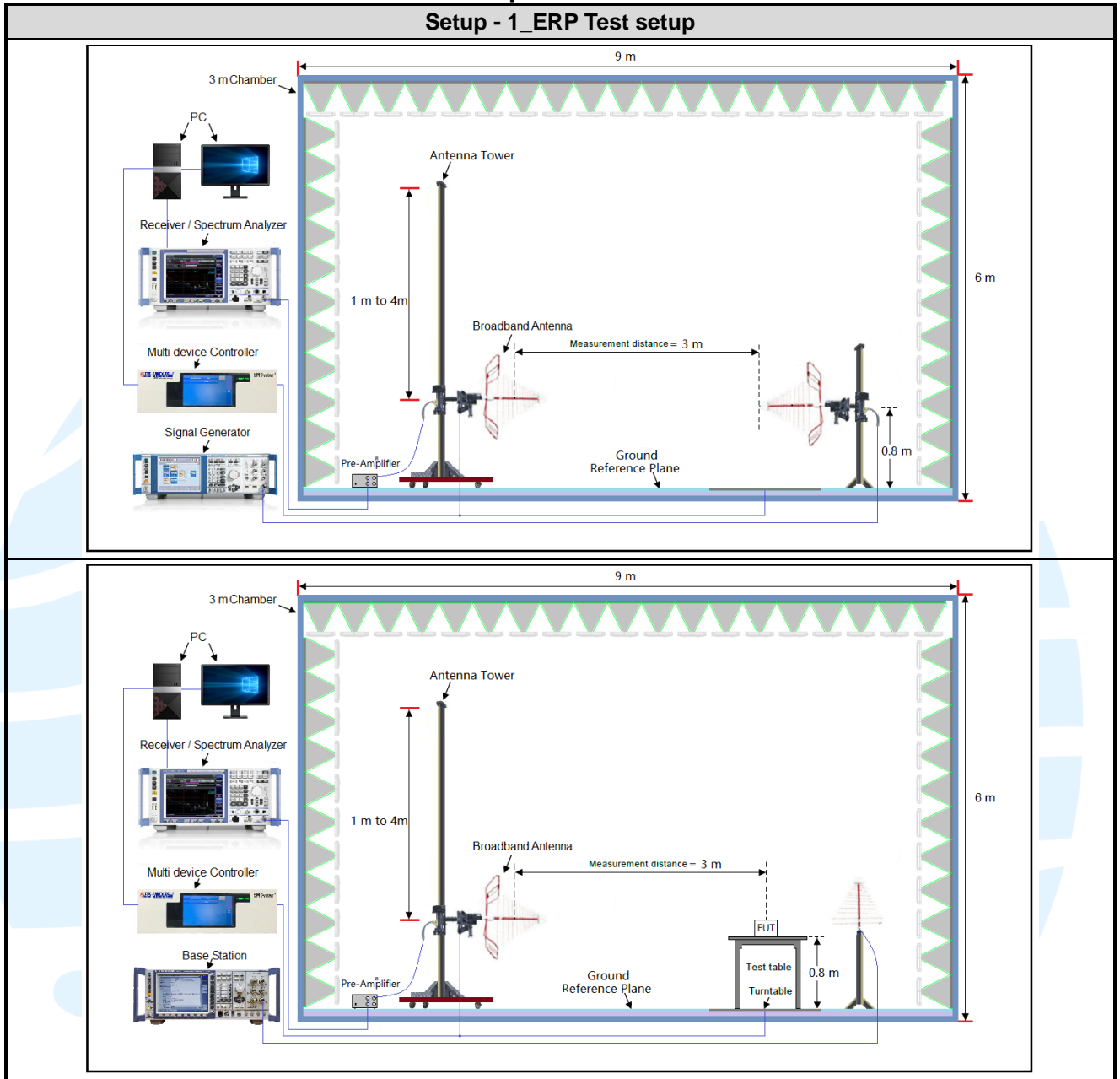
| Test Environment | Selected Values During Tests | | |
|------------------|------------------------------|-------------|-----------------------|
| Test Condition | Ambient | | |
| | Temperature (°C) | Voltage (V) | Relative Humidity (%) |
| TN/VN | +15 to +35 | 3.7 | 20 to 75 |
| TL/VL | -30 | 3.5 | 20 to 75 |
| TH/VL | +50 | 3.5 | 20 to 75 |
| TL/VH | -30 | 4.25 | 20 to 75 |
| TH/VH | +50 | 4.25 | 20 to 75 |

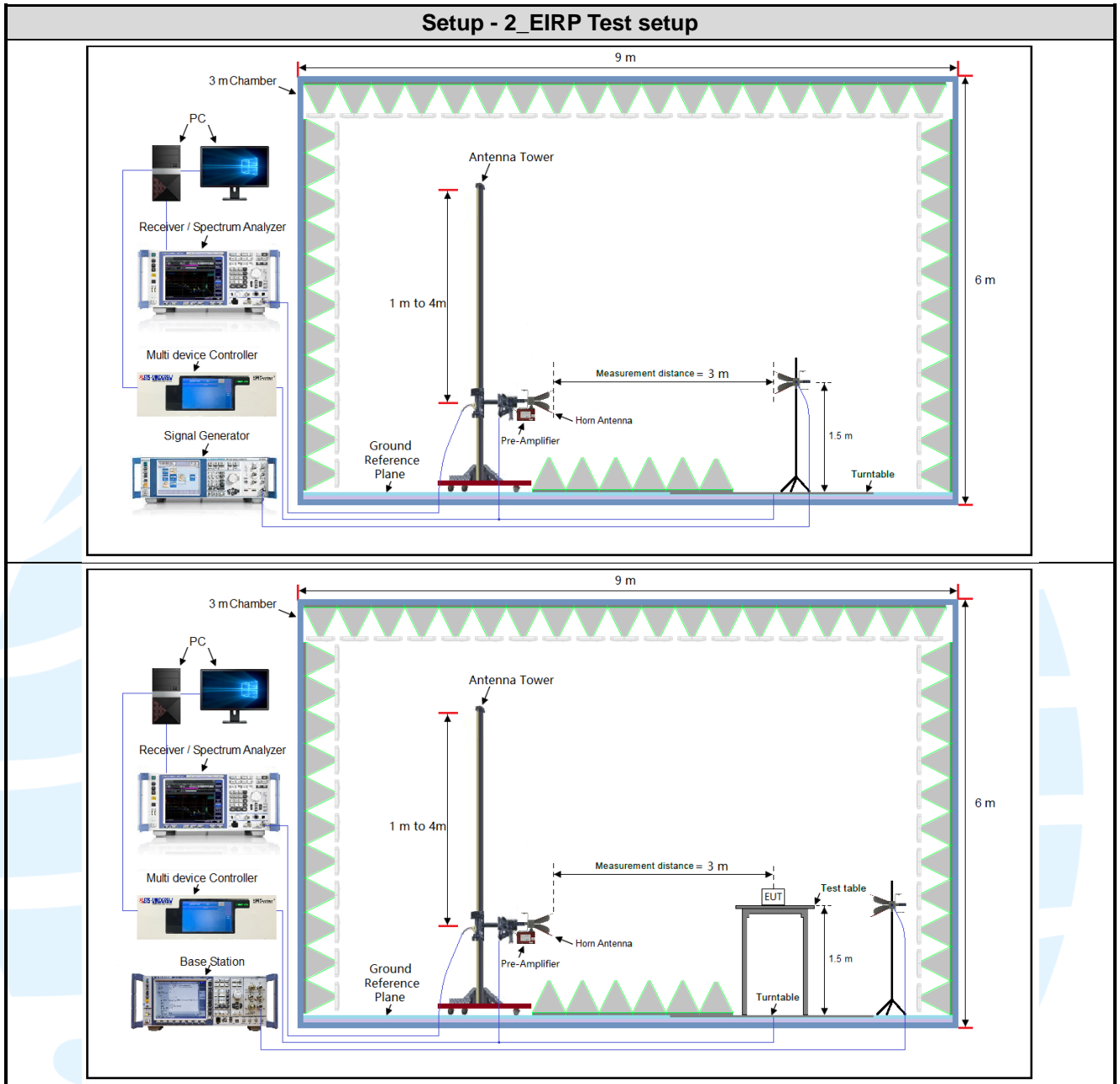
Remark:

- 1) The EUT just work in such extreme temperature of -30 °C to +50 °C and the extreme voltage of 3.5 V to 4.25 V, so here the EUT is tested in the temperature of -30 °C to +50 °C and the voltage of 3.5 V to 4.25 V.
- 2) VN: Normal Voltage; TN: Normal Temperature;
 TL: Low Extreme Test Temperature; TH: High Extreme Test Temperature;
 VL: Low Extreme Test Voltage; VH: High Extreme Test Voltage.

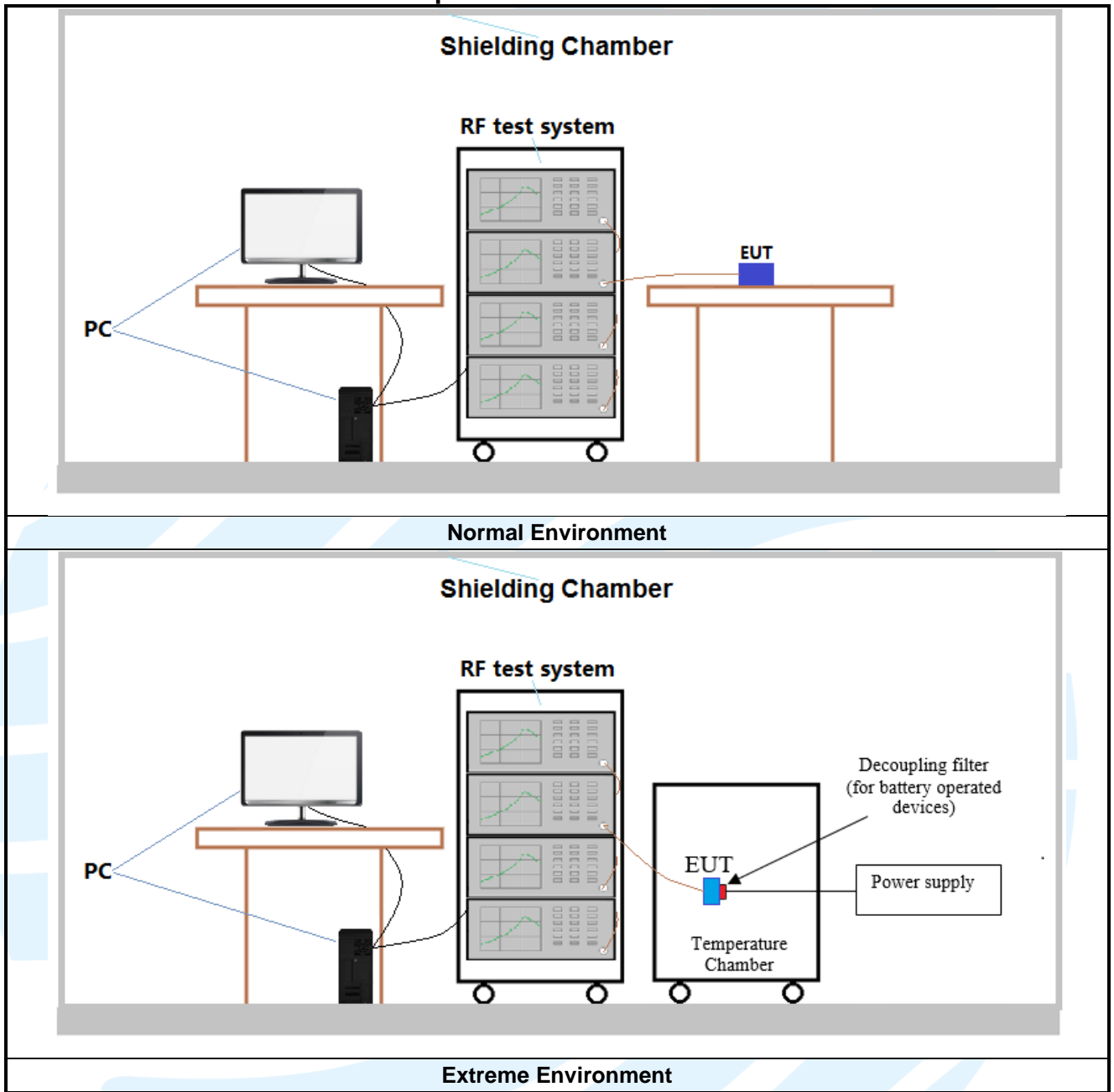
4.2 TEST SETUP

4.2.1 For Radiated Emissions test setup





4.2.2 For Conducted RF test setup



4.3 TEST CHANNELS

| Band | Tx/Rx Frequency | RF Channel | | |
|----------|---------------------------|-------------|-------------|-------------|
| | | Low(L) | Middle(M) | High(H) |
| GSM/GPRS | Tx (824 MHz ~ 849 MHz) | Channel 128 | Channel 190 | Channel 251 |
| | | 824.2 MHz | 836.6 MHz | 848.8 MHz |

4.4 SYSTEM TEST CONFIGURATION

For emissions testing, the equipment under test (EUT) setup to transmit continuously to simplify the measurement methodology. Care was taken to ensure proper power supply voltages during testing. During testing, radiated emission were performed with the EUT set to transmit at the channel with highest output power as worst-case scenario. It was powered by a 3.7Vdc rechargeable Li-on battery. Only the worst case data were recorded in this test report.

Pre-Scan has been conducted to determine the worst-case mode from all possible combinations between available modulations, data rates, X/Y/Z axis, and antenna ports.

All readings are extrapolated back to the equivalent three meter reading using inverse scaling with distance. Analyzer resolution is 100 kHz or greater for frequencies below 1000MHz. The resolution is 1 MHz or greater for frequencies above 1000MHz. The spurious emissions more than 20 dB below the permissible value are not reported.

Radiated emission measurement were performed from the lowest radio frequency signal generated in the device which is greater than 9 kHz to the tenth harmonic of the highest fundamental frequency or to 40 GHz, whichever is lower.

4.5 PRE-SCAN

Pre-scan under all rate at lowest middle and highest channel, find the transmitter power as below:
SIM 1 Card Conducted transmitter power measurement result.

| GSM 850 Maximum Average Power (dBm) | | | |
|-------------------------------------|-----------|-----------|--------------|
| Channel | 128 | 190 | 251 |
| Frequency(MHz) | 824.2 MHz | 836.6 MHz | 848.8 MHz |
| GSM (GMSK, 1Tx-slot) | 32.23 | 32.26 | 32.27 |
| GPRS (GMSK, 1Tx-slot) | 32.19 | 32.23 | 32.21 |
| GPRS (GMSK, 2Tx-slot) | 30.55 | 30.62 | 30.65 |
| GPRS (GMSK, 3Tx-slot) | 29.26 | 29.31 | 29.33 |
| GPRS (GMSK, 4Tx-slot) | 27.78 | 27.84 | 27.86 |

Pre-scan all bandwidth and RB, find worse case mode are chosen to the report, the worse mode applicability and tested channel detail as below:

| Band | Radiated | Conducted |
|----------|---------------------------------------------------------------|--------------------------------------------------------------|
| GSM/GPRS | 1) GSM (GMSK, 1Tx-slot) Link 2) GPRS (GMSK, 1Tx-slot) Link | 1) GSM (GMSK,1Tx-slot) Link 2) GPRS (GMSK, 1Tx-slot) Link |

5. RADIO TECHNICAL REQUIREMENTS SPECIFICATION

5.1 REFERENCE DOCUMENTS FOR TESTING

| No. | Identity | Document Title |
|-----|------------------------------|-------------------------------------------------------------------------------------|
| 1 | FCC 47 CFR Part 2 Subpart J | Frequency allocations and radio treaty matters; general rules and regulations |
| 2 | FCC 47 CFR Part 22 Subpart H | Cellular Radiotelephone Service |
| 3 | ANSI/TIA-603-E-2016 | Land Mobile FM or PM Communications Equipment Measurement and Performance Standards |
| 4 | KDB 971168 D01 | KDB 971168 D01 Power Meas License Digital Systems v03 |

5.2 EFFECTIVE RADIATED POWER (ERP)

Test Requirement: FCC 47 CFR Part 2.1046(a) & FCC 47 CFR Part 22.913(a)

Test Method: KDB 971168 D01v03& ANSI/TIA-603-E-2016

Limit:

The ERP of mobile transmitters and auxiliary test transmitters must not exceed 7 Watts.

Test Procedure:

Test procedure as below:

- 1) The EUT was powered ON and placed on a 0.8/1.5m high table at a 3 meter semi/fully Anechoic Chamber. The antenna of the transmitter was extended to its maximum length. Modulation mode and the measuring receiver shall be tuned to the frequency of the transmitter under test.
- 2) The EUT was set 3 meters away from the interference-receiving antenna, which was mounted on the top of a variable-height antenna tower.
- 3) The disturbance of the transmitter was maximized on the test receiver display by raising and lowering from 1m to 4m the receive antenna and by rotating through 360° the turntable. After the fundamental emission was maximized, a field strength measurement was made.
- 4) Steps 1) to 3) were performed with the EUT and the receive antenna in both vertical and horizontal polarization.
- 5) The transmitter was then removed and replaced with another antenna. The center of the antenna was approximately at the same location as the center of the transmitter.
- 6) A signal at the disturbance was fed to the substitution antenna by means of a non-radiating cable. With both the substitution and the receive antennas horizontally polarized, the receive antenna was raised and lowered to obtain a maximum reading at the test receiver. The level of the signal generator was adjusted until the measured field strength level in step 3) is obtained for this set of conditions.
- 7) The output power into the substitution antenna was then measured.
- 8) Steps 6) and 7) were repeated with both antennas polarized.
- 9) Calculate power in dBm by the following formula:

$$\begin{aligned} \text{ERP(dBm)} &= \text{Pg(dBm)} - \text{cable loss (dB)} + \text{antenna gain (dBd)} \\ \text{EIRP(dBm)} &= \text{Pg(dBm)} - \text{cable loss (dB)} + \text{antenna gain (dBi)} \\ \text{EIRP} &= \text{ERP} + 2.15\text{dB} \end{aligned}$$

where:

Pg is the generator output power into the substitution antenna.

- 10) Test the EUT in the lowest channel, the middle channel the Highest channel
- 11) The radiation measurements are performed in X, Y, Z axis positioning for EUT operation mode, and found the Y axis positioning which it is worse case.
- 12) Repeat above procedures until all frequencies measured was complete.

Receiver Setup:

| Frequency | Detector | RBW | VBW | Remark |
|------------|----------|--------|--------|--------|
| 30MHz-1GHz | Peak | 100kHz | 300kHz | Peak |
| Above 1GHz | Peak | 1MHz | 3MHz | Peak |

Test Setup: Refer to section 4.2.1 for details.

Instruments Used: Refer to section 3 for details

Test Mode: Link mode

Test Results: Pass

Test Data: See table below

| Maximum ERP (dBm) | | | |
|-------------------|-----------------|----------------|--------|
| Channel | GSM 1Tx-slot | Limit (dBm) | Result |
| Lowest | 26.21 | 38.45 | Pass |
| Middle | 27.45 | 38.45 | Pass |
| Highest | 28.31 | 38.45 | Pass |



5.3 CONDUCTED OUTPUT POWER

Test Requirement: FCC 47 CFR Part 2.1046(a) & FCC 47 CFR Part 22.913(a)

Test Method: ANSI/TIA-603-E-2016 & KDB 971168 D01v03

Limit:

The ERP of mobile transmitters and auxiliary test transmitters must not exceed 7 Watts.

Test Procedure:

The EUT was set up for the maximum power with GSM, GPRS, EDGE, WCDMA, CDMA2000, and LTE link data modulation and link up with simulator. Set the EUT to transmit under low, middle and high channel and record the power level shown on simulator.

Note: The cable loss and attenuator loss were offset into measure device as an amplitude offset.

Test Setup: Refer to section 4.2.2 for details.

Instruments Used: Refer to section 3 for details

Test Mode: Link mode

Test Results: Pass

Test Data: The full result refer to section 4.5 for details.

5.4 PEAK-TO-AVERAGE RATIO

Test Requirement: FCC 47 CFR Part 22.913(a)

Test Method: KDB 971168 D01v03

Limit: In measuring transmissions in this band using an average power technique, the peak-to-average ratio (PAR) of the transmission may not exceed 13 dB

Test Procedure:

The transmitter output was connected to a calibrated coaxial cable and coupler, the other end of which was connected to a spectrum analyzer.

- a) Set resolution/measurement bandwidth \geq signal's occupied bandwidth
- b) Set the number of counts to a value that stabilizes the measured CCDF curve
- c) Record the maximum PAPR level associated with a probability of 0.1 %

Note: The cable loss and attenuator loss were offset into measure device as an amplitude offset.

Test Setup: Refer to section 4.2.2 for details.

Instruments Used: Refer to section 3 for details

Test Mode: Link mode

Test Results: Pass

Test Data: See table below

| Peak-to-average ratio (dB) | | | | | |
|----------------------------|-----------------|------------------|------------------|----------------|--------|
| Channel | GSM 1Tx-slot | GPRS 1Tx-slot | EDGE 1Tx-slot | Limit (dBm) | Result |
| Lowest | 0.28 | 0.27 | N/A | 13 | Pass |
| Middle | 0.30 | 0.36 | N/A | 13 | Pass |
| Highest | 0.48 | 0.33 | N/A | 13 | Pass |

The test plot as follows:



5.5 99%&26DB BANDWIDTH

Test Requirement: FCC 47 CFR Part 2.1049(h) & FCC 47 CFR Part 22.917(b)

Test Method: ANSI/TIA-603-E-2016 & KDB 971168 D01v03

Limit: No Limit

Test Procedure:

The transmitter output was connected to a calibrated coaxial cable and coupler, the other end of which was connected to a spectrum analyzer. The occupied bandwidth was measured with the spectrum analyzer at the low, middle and high channel in each band. The 99% and -26dB bandwidths was also measured and recorded.

Note: The cable loss and attenuator loss were offset into measure device as an amplitude offset.

Test Setup: Refer to section 4.2.2 for details.

Instruments Used: Refer to section 3 for details

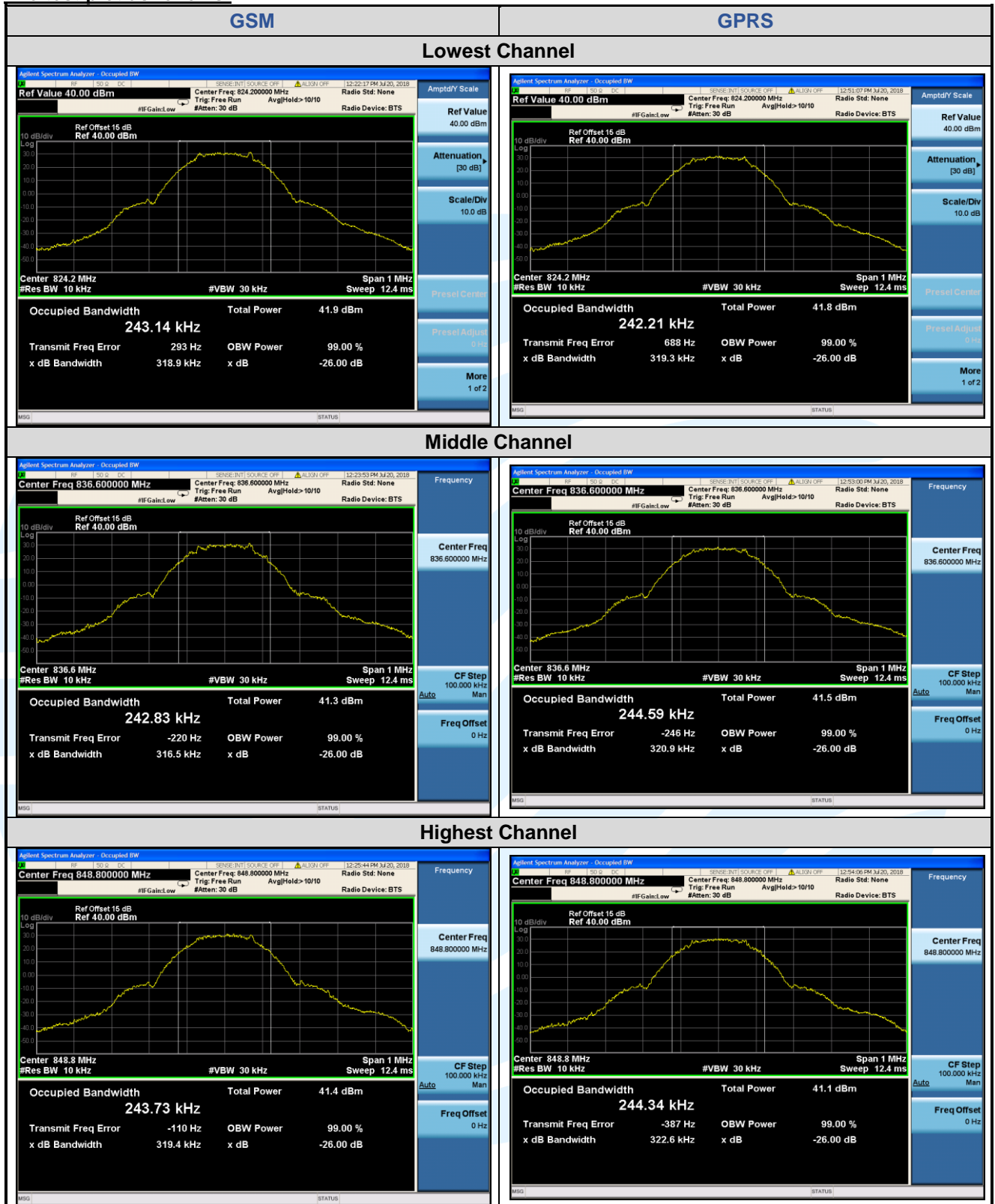
Test Mode: Link mode

Test Results: Pass

Test Data: See table below

| 99% & 26 dB Bandwidth | | | | |
|-----------------------|---------|-----------------|----------------|--------------|
| Test Mode | Channel | Frequency (MHz) | 26 dB BW (kHz) | 99% BW (kHz) |
| GSM 1Tx-slot | 128 | 824.2 | 318.9 | 243.14 |
| | 190 | 836.6 | 316.5 | 242.83 |
| | 251 | 848.8 | 319.4 | 243.73 |
| GPRS 1Tx-slot | 128 | 824.2 | 319.3 | 242.21 |
| | 190 | 836.6 | 320.9 | 244.59 |
| | 251 | 848.8 | 322.6 | 244.34 |

The test plot as follows:



5.6 BAND EDGE AT ANTENNA TERMINALS

Test Requirement: FCC 47 CFR Part 2.1051 & FCC 47 CFR Part 22.917(a)

Test Method: ANSI/TIA-603-E-2016 & KDB 971168 D01v03

Limit:

The power of any emission outside of the authorized operating frequency ranges must be attenuated below the transmitting power (P) by a factor of at least $43 + 10 \log(P)$ dB. The emission limit equal to -13 dBm.

Test Procedure:

The transmitter output was connected to a calibrated coaxial cable and coupler, the other end of which was connected to a spectrum analyzer.

For each band edge measurement:

- 1) Set the spectrum analyzer span to include the block edge frequency.
- 2) Set a marker to point the corresponding band edge frequency in each test case.
- 3) Set display line at -13 dBm
- 4) Set resolution bandwidth to at least 1% of emission bandwidth.
- 5) Set spectrum analyzer with RMS detector.
- 6) Record the max trace plot into the test report

Note: The cable loss and attenuator loss were offset into measure device as an amplitude offset.

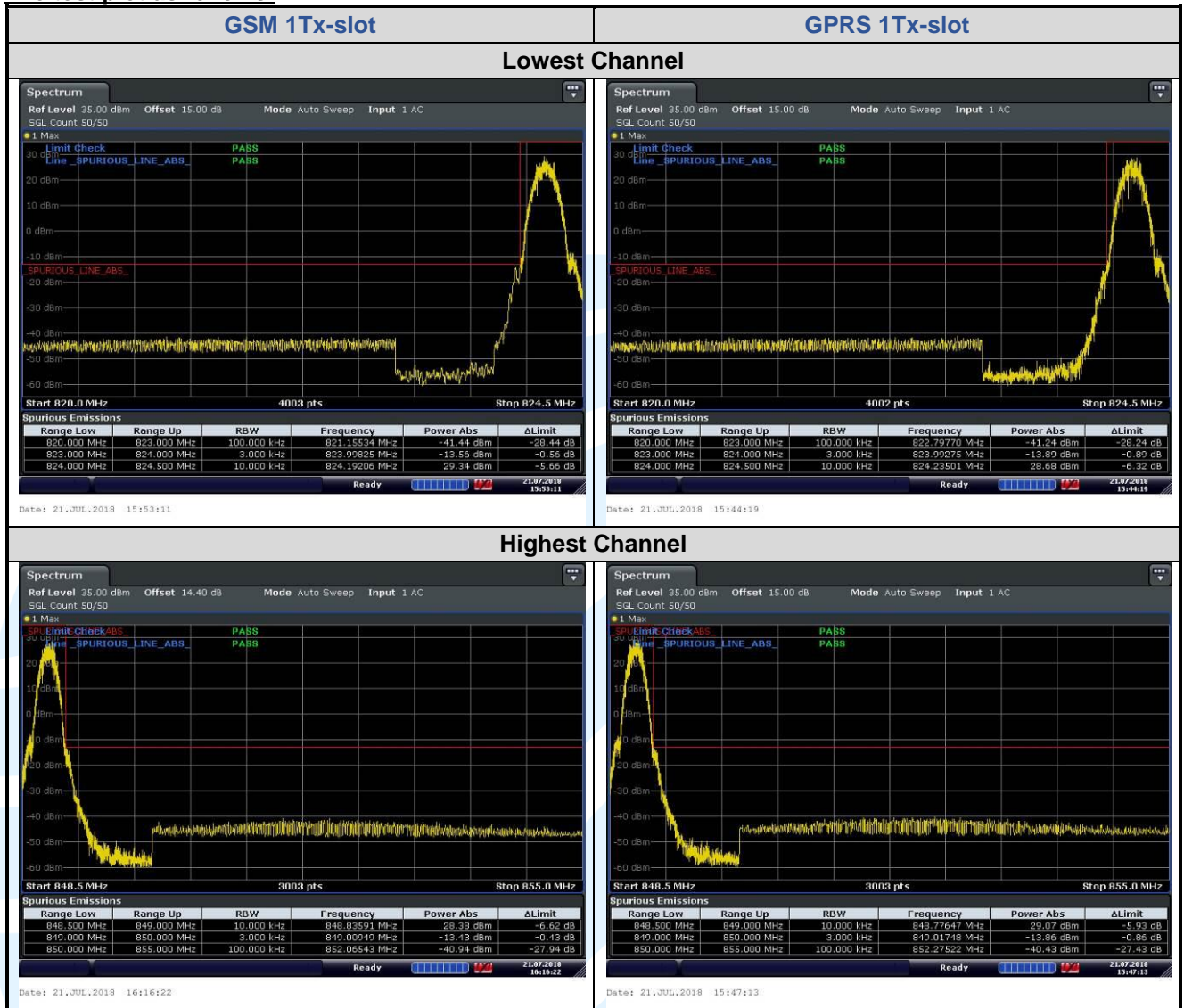
Test Setup: Refer to section 4.2.2 for details.

Instruments Used: Refer to section 3 for details

Test Mode: Link mode

Test Results: Pass

The test plot as follows:



5.7 SPURIOUS EMISSIONS AT ANTENNA TERMINALS

Test Requirement: FCC 47 CFR Part 2.1051 & FCC 47 CFR Part 22.917(a)(b)

Test Method: ANSI/TIA-603-E-2016 & KDB 971168 D01v03

Limit:

The power of any emission outside of the authorized operating frequency ranges must be attenuated below the transmitting power (P) by a factor of at least $43 + 10 \log(P)$ dB. The emission limit equal to -13 dBm.

Test Procedure:

The EUT makes a phone call to the communication simulator. All measurements were done at low, middle and high operational frequency range. b. Measuring frequency range is from 30 MHz to the tenth harmonic of the highest fundamental frequency or to 40 GHz, whichever is lower. Set RBW & VBW to 100 kHz for the measurement below 1 GHz, and 1 MHz for the measurement above 1 GHz.

Note: The cable loss and attenuator loss were offset into measure device as an amplitude offset.

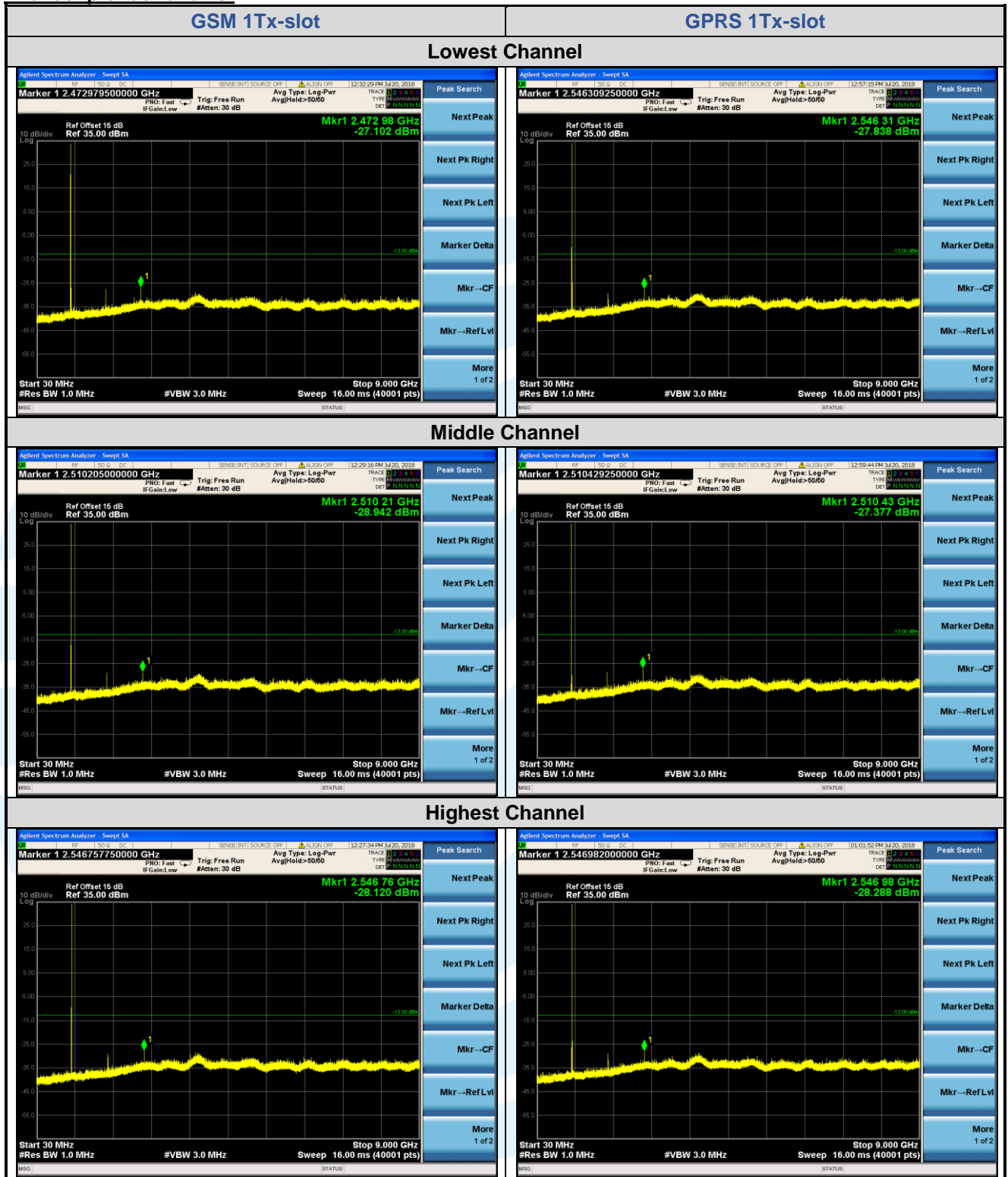
Test Setup: Refer to section 4.2.2 for details.

Instruments Used: Refer to section 3 for details

Test Mode: Link mode

Test Results: Pass

The test plot as follows:



5.8 FIELD STRENGTH OF SPURIOUS RADIATION

Test Requirement: FCC 47 CFR Part 2.1053 & FCC 47 CFR Part 22.917(a)(b)

Test Method: ANSI/TIA-603-E-2016 & KDB 971168 D01v03

Receiver Setup:

| Frequency | Detector | RBW | VBW | Remark |
|------------------|------------|---------|---------|--------|
| 0.009 MHz-30 MHz | Peak | 10 kHz | 30 KHz | Peak |
| 30 MHz-1 GHz | Quasi-peak | 100 kHz | 300 KHz | Peak |
| Above 1 GHz | Peak | 1 MHz | 3 MHz | Peak |

Limits:

The power of any emission outside of the authorized operating frequency ranges must be attenuated below the transmitting power (P) by a factor of at least $43 + 10 \log(P)$ dB. The emission limit equal to -13 dBm.

Test Setup: Refer to section 4.2.1 for details.

Test Procedures:

1. Scan up to 10th harmonic, find the maximum radiation frequency to measure.
2. The technique used to find the Spurious Emissions of the transmitter was the antenna substitution method. Substitution method was performed to determine the actual ERP/EIRP emission levels of the EUT.

Test procedure as below:

- 1) The EUT was powered ON and placed on a 0.8/1.5m high table at a 3 meter semi/fully Anechoic Chamber. The antenna of the transmitter was extended to its maximum length. Modulation mode and the measuring receiver shall be tuned to the frequency of the transmitter under test.
- 2) The EUT was set 3 meters away from the interference-receiving antenna, which was mounted on the top of a variable-height antenna tower.
- 3) The disturbance of the transmitter was maximized on the test receiver display by raising and lowering from 1m to 4m the receive antenna and by rotating through 360° the turntable. After the fundamental emission was maximized, a field strength measurement was made.
- 4) Steps 1) to 3) were performed with the EUT and the receive antenna in both vertical and horizontal polarization.
- 5) The transmitter was then removed and replaced with another antenna. The center of the antenna was approximately at the same location as the center of the transmitter.
- 6) A signal at the disturbance was fed to the substitution antenna by means of a non-radiating cable. With both the substitution and the receive antennas horizontally polarized, the receive antenna was raised and lowered to obtain a maximum reading at the test receiver. The level of the signal generator was adjusted until the measured field strength level in step 3) is obtained for this set of conditions.
- 7) The output power into the substitution antenna was then measured.
- 8) Steps 6) and 7) were repeated with both antennas polarized.
- 9) Calculate power in dBm by the following formula:

$$ERP(dBm) = Pg(dBm) - \text{cable loss (dB)} + \text{antenna gain (dBd)}$$

$$EIRP(dBm) = Pg(dBm) - \text{cable loss (dB)} + \text{antenna gain (dBi)}$$

$$EIRP = ERP + 2.15dB$$

where:

Pg is the generator output power into the substitution antenna.

- 10) Test the EUT in the lowest channel, the middle channel the Highest channel
- 11) The radiation measurements are performed in X, Y, Z axis positioning for EUT operation mode, and found the Y axis positioning which it is worse case.
- 12) Repeat above procedures until all frequencies measured was complete.

Equipment Used: Refer to section 3 for details.

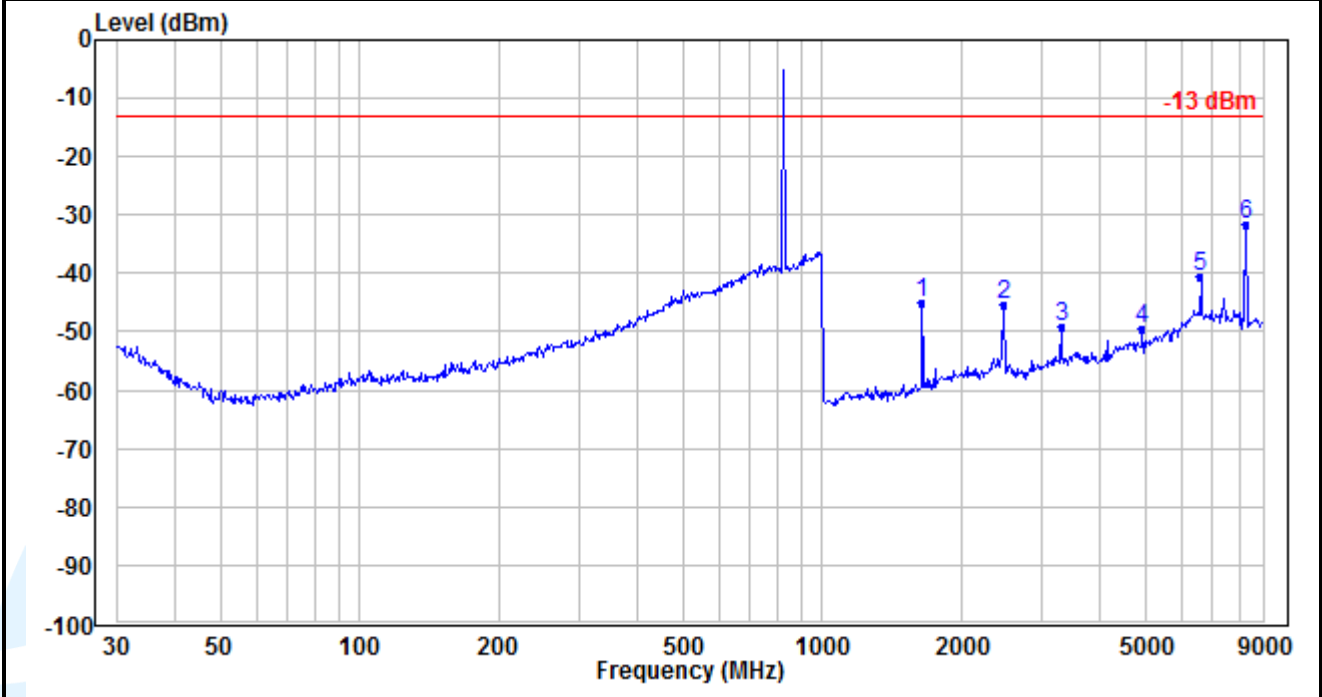
Test Result: Pass

The measurement data as follows:

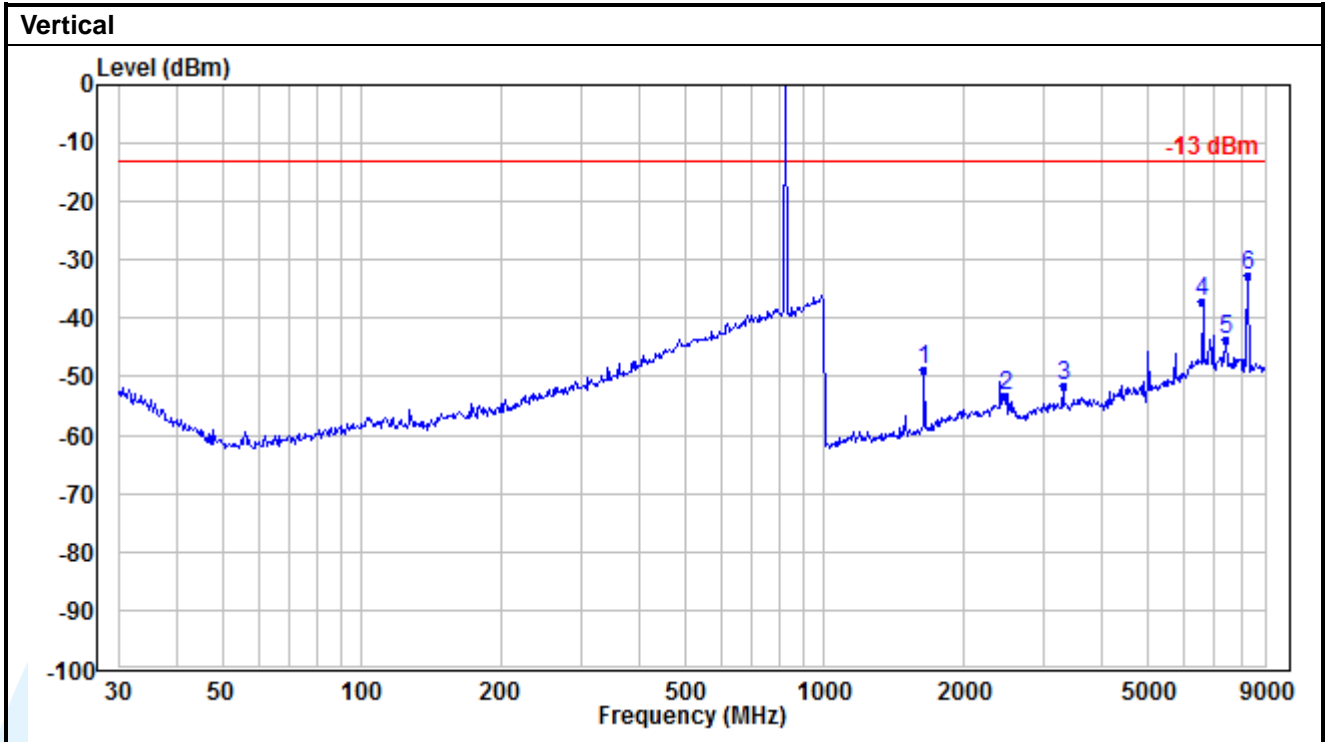
Radiated Emission Test Data

GSM 1Tx-slot_Lowest Channel

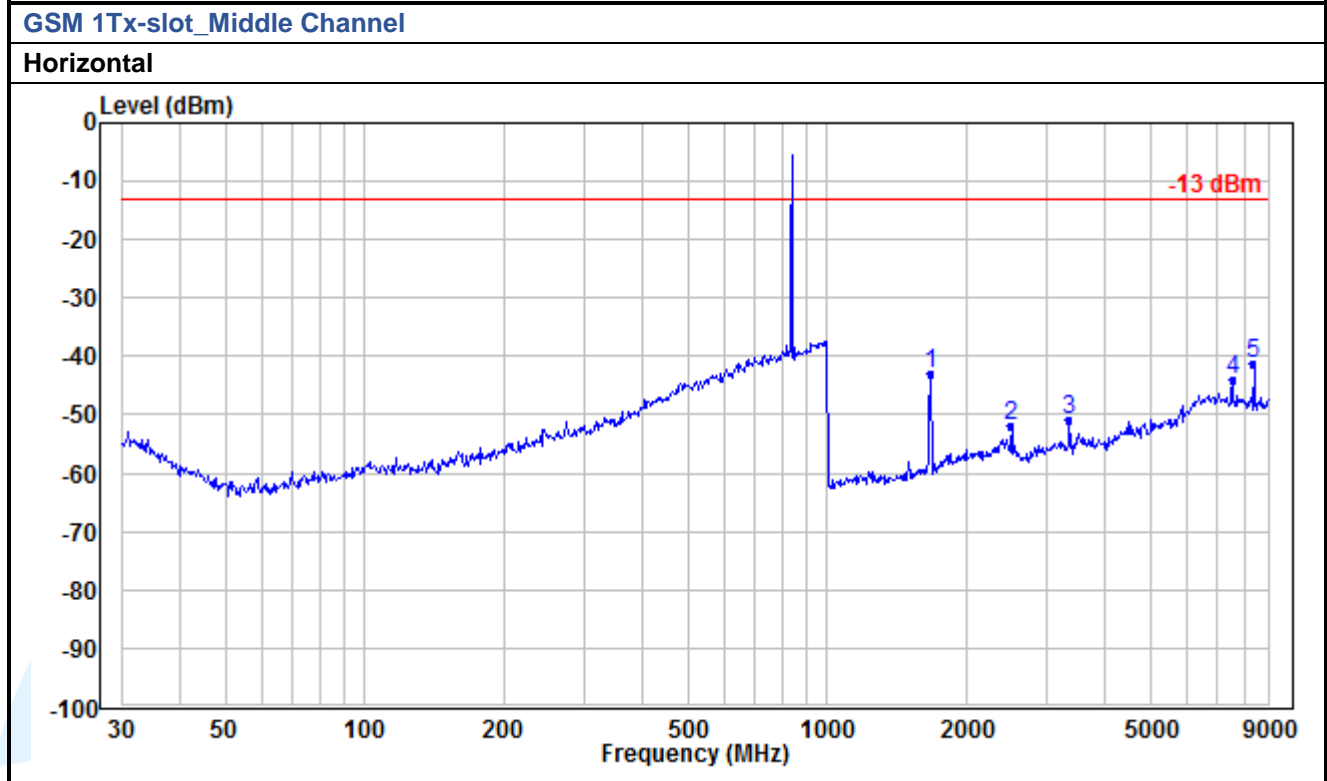
Horizontal



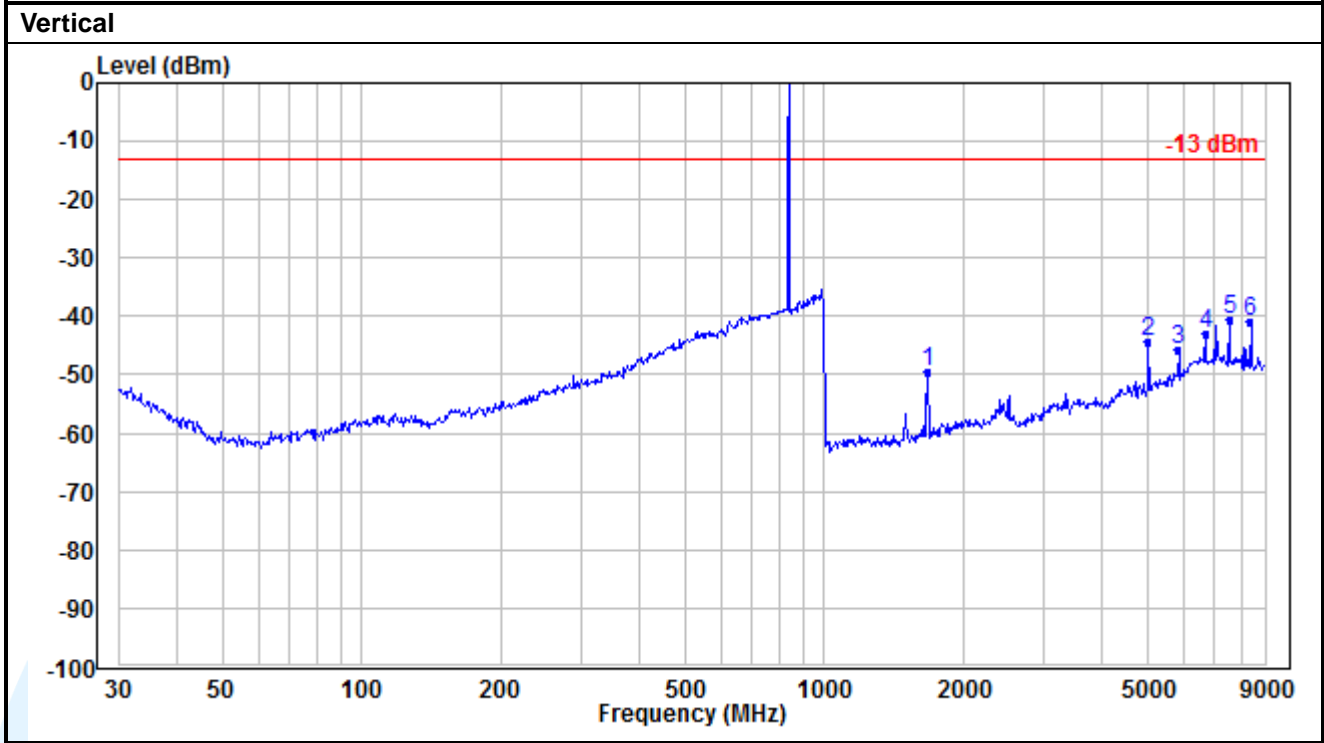
| No. | Frequency (MHz) | Reading (dBm) | Correction factor (dB) | Result (dBm) | Limit (dBm) | Margin (dB) | Remark |
|-----|-----------------|---------------|------------------------|--------------|-------------|-------------|--------|
| 1 | 1648.400 | -48.48 | 3.59 | -44.89 | -13.00 | -31.89 | Peak |
| 2 | 2472.600 | -56.58 | 11.19 | -45.39 | -13.00 | -32.39 | Peak |
| 3 | 3296.800 | -61.88 | 12.82 | -49.06 | -13.00 | -36.06 | Peak |
| 4 | 4945.200 | -63.96 | 14.43 | -49.53 | -13.00 | -36.53 | Peak |
| 5 | 6593.600 | -59.66 | 19.11 | -40.55 | -13.00 | -27.55 | Peak |
| 6 | 8242.000 | -49.94 | 18.37 | -31.57 | -13.00 | -18.57 | Peak |



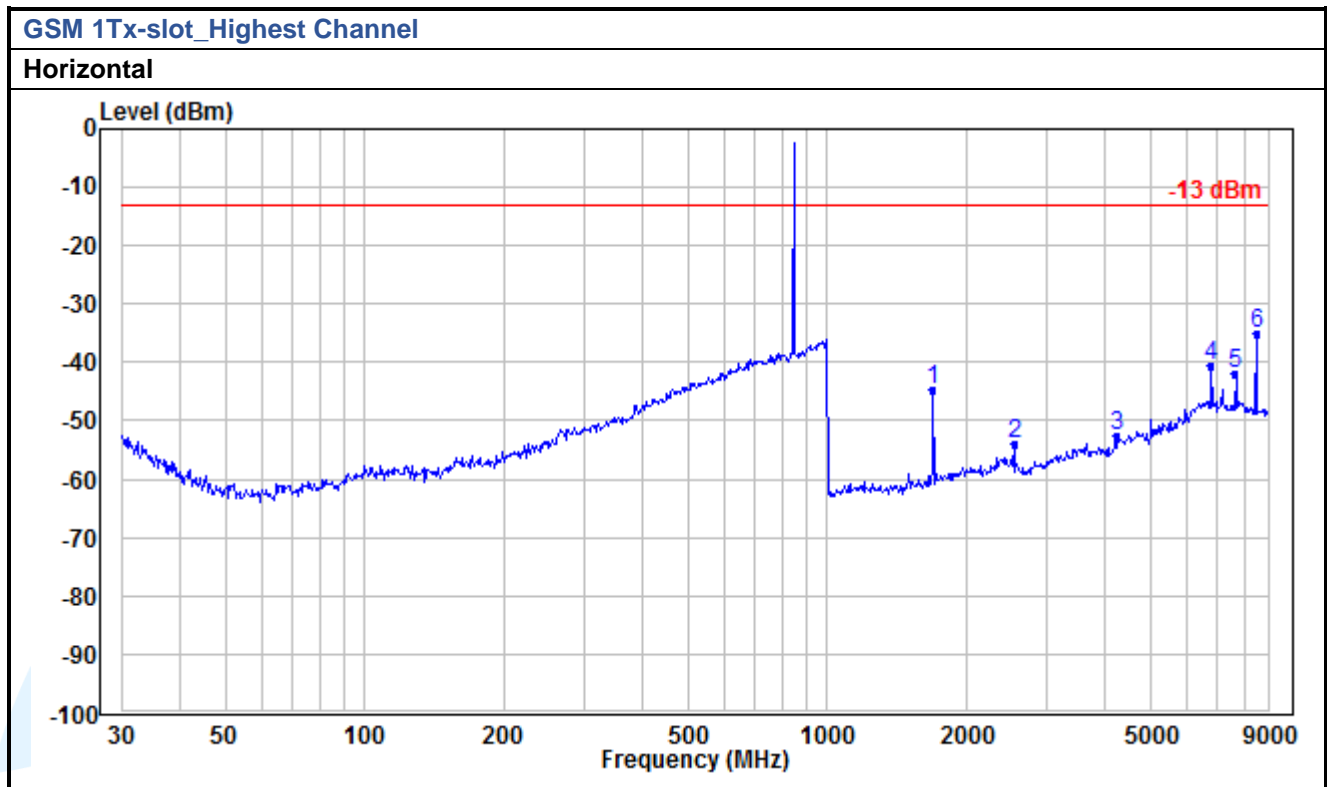
| No. | Frequency (MHz) | Reading (dBm) | Correction factor (dB) | Result (dBm) | Limit (dBm) | Margin (dB) | Remark |
|-----|-----------------|---------------|------------------------|--------------|-------------|-------------|--------|
| 1 | 1648.400 | -52.54 | 3.59 | -48.95 | -13.00 | -35.95 | Peak |
| 2 | 2472.600 | -64.49 | 11.19 | -53.30 | -13.00 | -40.30 | Peak |
| 3 | 3296.800 | -64.30 | 12.82 | -51.48 | -13.00 | -38.48 | Peak |
| 4 | 6593.600 | -56.18 | 19.11 | -37.07 | -13.00 | -24.07 | Peak |
| 5 | 7417.800 | -61.95 | 18.30 | -43.65 | -13.00 | -30.65 | Peak |
| 6 | 8242.000 | -51.16 | 18.37 | -32.79 | -13.00 | -19.79 | Peak |



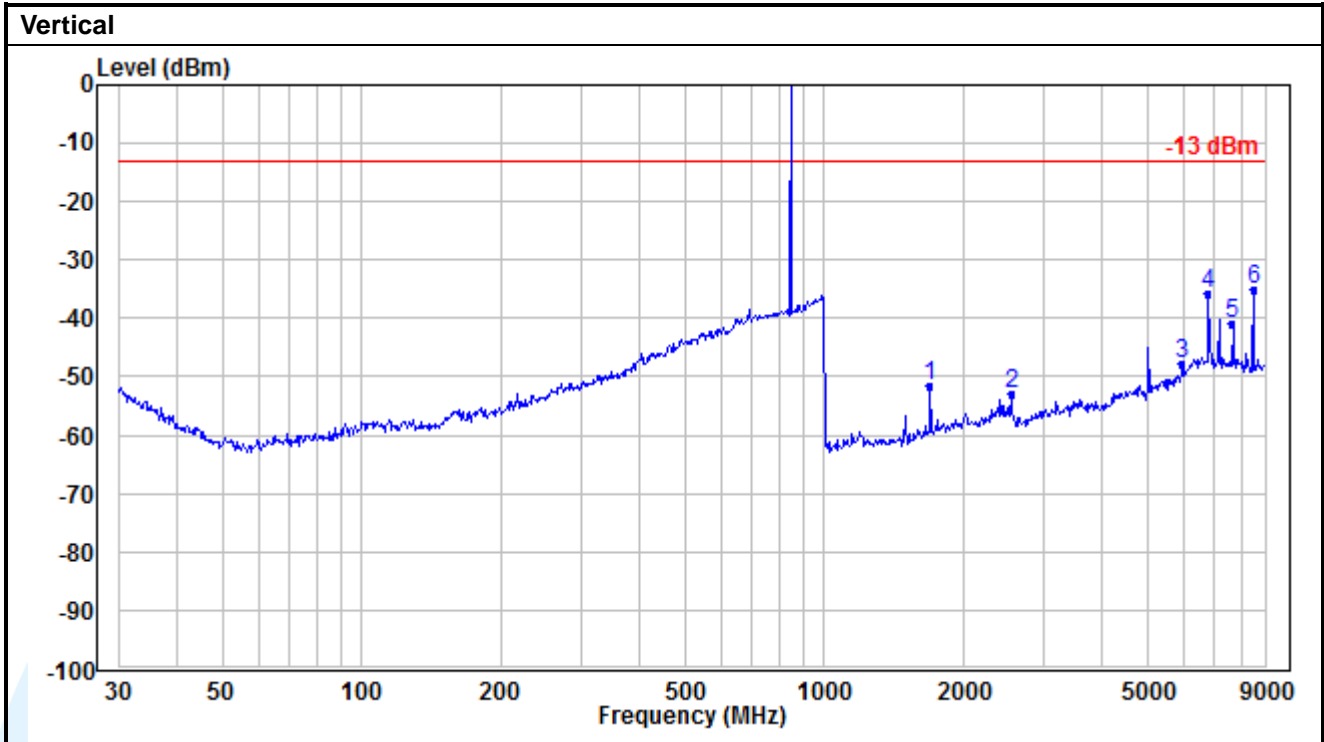
| No. | Frequency (MHz) | Reading (dBm) | Correction factor (dB) | Result (dBm) | Limit (dBm) | Margin (dB) | Remark |
|-----|-----------------|---------------|------------------------|--------------|-------------|-------------|--------|
| 1 | 1673.200 | -46.74 | 3.88 | -42.86 | -13.00 | -29.86 | Peak |
| 2 | 2509.800 | -63.14 | 11.16 | -51.98 | -13.00 | -38.98 | Peak |
| 3 | 3346.400 | -63.88 | 12.97 | -50.91 | -13.00 | -37.91 | Peak |
| 4 | 7529.400 | -62.41 | 18.31 | -44.10 | -13.00 | -31.10 | Peak |
| 5 | 8366.000 | -59.43 | 18.27 | -41.16 | -13.00 | -28.16 | Peak |



| No. | Frequency (MHz) | Reading (dBm) | Correction factor (dB) | Result (dBm) | Limit (dBm) | Margin (dB) | Remark |
|-----|-----------------|---------------|------------------------|--------------|-------------|-------------|--------|
| 1 | 1673.200 | -53.30 | 3.88 | -49.42 | -13.00 | -36.42 | Peak |
| 2 | 5019.600 | -58.87 | 14.46 | -44.41 | -13.00 | -31.41 | Peak |
| 3 | 5856.200 | -62.73 | 17.12 | -45.61 | -13.00 | -32.61 | Peak |
| 4 | 6692.800 | -61.92 | 18.96 | -42.96 | -13.00 | -29.96 | Peak |
| 5 | 7529.400 | -58.91 | 18.31 | -40.60 | -13.00 | -27.60 | Peak |
| 6 | 8366.000 | -59.00 | 18.27 | -40.73 | -13.00 | -27.73 | Peak |



| No. | Frequency (MHz) | Reading (dBm) | Correction factor (dB) | Result (dBm) | Limit (dBm) | Margin (dB) | Remark |
|-----|-----------------|---------------|------------------------|--------------|-------------|-------------|--------|
| 1 | 1697.600 | -48.73 | 4.17 | -44.56 | -13.00 | -31.56 | Peak |
| 2 | 2546.400 | -65.13 | 11.14 | -53.99 | -13.00 | -40.99 | Peak |
| 3 | 4244.000 | -66.37 | 13.88 | -52.49 | -13.00 | -39.49 | Peak |
| 4 | 6790.400 | -59.36 | 18.81 | -40.55 | -13.00 | -27.55 | Peak |
| 5 | 7639.200 | -60.51 | 18.42 | -42.09 | -13.00 | -29.09 | Peak |
| 6 | 8488.000 | -53.38 | 18.26 | -35.12 | -13.00 | -22.12 | Peak |



| No. | Frequency (MHz) | Reading (dBm) | Correction factor (dB) | Result (dBm) | Limit (dBm) | Margin (dB) | Remark |
|-----|-----------------|---------------|------------------------|--------------|-------------|-------------|--------|
| 1 | 1697.600 | -55.63 | 4.17 | -51.46 | -13.00 | -38.46 | Peak |
| 2 | 2546.400 | -64.14 | 11.14 | -53.00 | -13.00 | -40.00 | Peak |
| 3 | 5941.600 | -64.96 | 17.36 | -47.60 | -13.00 | -34.60 | Peak |
| 4 | 6790.400 | -54.54 | 18.81 | -35.73 | -13.00 | -22.73 | Peak |
| 5 | 7639.200 | -59.28 | 18.42 | -40.86 | -13.00 | -27.86 | Peak |
| 6 | 8488.000 | -53.21 | 18.26 | -34.95 | -13.00 | -21.95 | Peak |

Remark:

1) All the above radiation data, the fundamental frequency is not marked, it may exceed the limit, please ignore it.

5.9 FREQUENCY STABILITY

Test Requirement: FCC 47 CFR Part 2.1055 & FCC 47 CFR Part 22.355

Test Method: ANSI/TIA/EIA-603-D 2010 & KDB 971168 D01v02r02

Limits: The carrier frequency shall not depart from the reference frequency in excess of ± 2.5 ppm for mobile stations.

Test Setup: Refer to section 4.2.2 for details.

Test Procedures:

- 1) Use CMW 500 or CMU 200 with Frequency Error measurement capability.
 - a) Temp. = -30° to $+50^{\circ}$ C
 - b) Voltage = low voltage, 3.5 Vdc, Normal, 3.7 Vdc and High voltage, 4.25 Vdc.
- 2) Frequency Stability vs Temperature:

The EUT is placed inside a temperature chamber. The temperature is set to 20° C and allowed to stabilize. After sufficient soak time, the transmitting frequency error is measured. The temperature is increased by 10 degrees, allowed to stabilize and soak, and then the measurement is repeated. This is repeated until $+50^{\circ}$ C is reached.

- 3) Frequency Stability vs Voltage:

The peak frequency error is recorded (worst-case).

Equipment Used: Refer to section 3 for details.

Test Result: Pass

| Modulation | Channel/ Frequency (MHz) | Voltage | Temperature | Deviation | Deviation | Limit | Pass/ Fail |
|---------------------|--------------------------------|---------|-----------------|-----------|-----------|-----------|------------|
| | | (Vdc) | ($^{\circ}$ C) | (Hz) | (ppm) | (ppm) | |
| GSM 1Tx-slot | | | | | | | |
| GMSK | 190 / 836.6 | VL | TN | -16 | -0.0191 | ± 2.5 | Pass |
| | | VN | | -14 | -0.0167 | ± 2.5 | Pass |
| | | VH | | -13 | -0.0155 | ± 2.5 | Pass |
| | | VN | 50 | -17 | -0.0203 | ± 2.5 | Pass |
| | | | 40 | -16 | -0.0191 | ± 2.5 | Pass |
| | | | 30 | -14 | -0.0167 | ± 2.5 | Pass |
| | | | 20 | -10 | -0.0120 | ± 2.5 | Pass |
| | | | 10 | -16 | -0.0191 | ± 2.5 | Pass |
| | | | 0 | -9 | -0.0108 | ± 2.5 | Pass |
| | | | -10 | -12 | -0.0143 | ± 2.5 | Pass |
| | | | -20 | -13 | -0.0155 | ± 2.5 | Pass |
| | | | -30 | -14 | -0.0167 | ± 2.5 | Pass |

APPENDIX 1 PHOTOS OF TEST SETUP

See test photos attached in Appendix 1 for the actual connections between Product and support equipment.

APPENDIX 2 PHOTOS OF EUT CONSTRUCTIONAL DETAILS

Refer to Appendix 2 for EUT external and internal photos.

*** End of Report ***

The test report is effective only with both signature and specialized stamp. The result(s) shown in this report refer only to the sample(s) tested. Without written approval of UnionTrust, this report can't be reproduced except in full.
