

## HD5310 Anchor Antenna

The Anchor antenna is a custom copper antenna, P/N 067843-002.

- 067843-001 was used prior to FCC compliance and the addition of the QM33 and it didn't support UWB CH 9.
- 067843-002 changed the design to support UWB Channel 9 as required for the QM33.
- 067843 does not have a released drawing. See the 172159 PCB design files for copper layout.

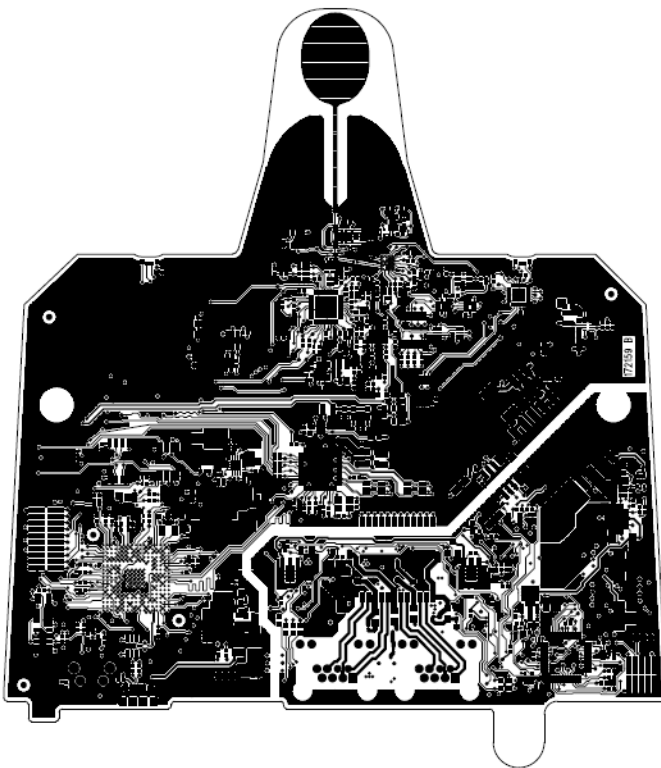
Antenna Model: 067843-002

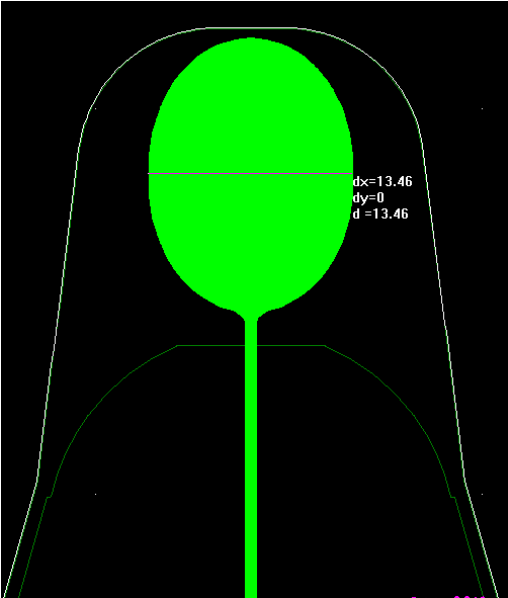
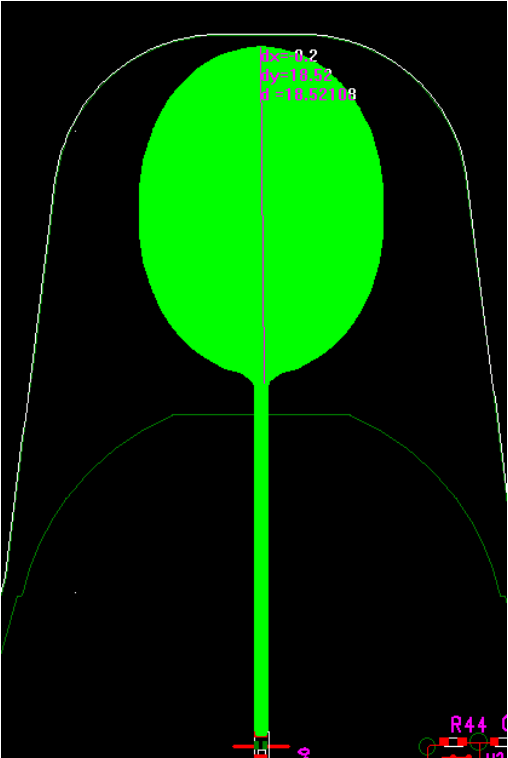
Style: Omnidirectional

Antenna Gain: 0 dBi

The 067843-002 is an integrated PCB antenna. The antenna is not removable or modifiable.

Crown did not hire a lab to create a detailed pattern analysis. We used a modification of a consultants existing design. We decided that the compliance lab finding the strongest radiated direction was good enough along with field history of an existing product.





Frequency range is 3.0 to 9.0 GHz.

Module operating range is 4.243.2 – 8.236.8 GHz

The S11 plot showing that is attached. In this plot, values of -10 or less are considered "good", so the antenna flirts with that line for much of the intended band. The fact that the antenna bandwidth stays below -10 dB into the 2.4 GHz wifi band is part of the reason why we have the high pass ceramic filter in the design.

