

**SGS-CSTC Standards
Technical Services Co., Ltd.**

588 West Jindu Road, Songjiang District, Shanghai, China

Telephone: +86 (0) 21 6191 5666
Fax: +86 (0) 21 6191 5655
Tino.Pan@sgs.com

Report No.: SHEMO10050056505
Page 1 of 14

TEST REPORT
Mobiles /Fixed Base Station
Maximum Permissible Exposure (MPE)

Application No. : SHEMO10050056505
Applicant: Jiangsu Shinco Digital Technology Co., Ltd.
FCC ID: YGLSH7601
Fundamental Frequency : 2.4GHz ISM Band
Equipment Under Test (EUT):
Name: LCD COLOR TV&BD PLAYER
Model No.: NS-32LB451A11
Standards: FCC PART 15 SUBPART C, Section 15.247
Date of Receipt: May 17, 2010
Date of Test: May 18, 2010 to July 15, 2010
Date of Issue: July 16, 2010
Test Result : PASS *

* In the configuration tested, the EUT complied with the standards specified above.

Approved by:



Tino Pan
E&E Section Manager

Tested By:



San Yuan
EMC TEST Engineer

SGS-CSTC Standards Technical Services Co., Ltd.

588 West Jindu Road, Songjiang District, Shanghai, China

Telephone: +86 (0) 21 6191 5666
Fax: +86 (0) 21 6191 5655
Tino.Pan@sgs.com

Report No.: SHEMO10050056505
Page 2 of 14

2 Contents

	Page
1 COVER PAGE.....	1
2 CONTENTS	2
3 GENERAL INFORMATION.....	3
3.1 CLIENT INFORMATION	3
3.2 DETAILS OF E.U.T.	3
3.3 TEST LOCATION.....	3
3.4 OTHER INFORMATION REQUESTED BY THE CUSTOMER	3
3.5 TEST FACILITY	4
4 MAXIMUM PERMISSIBLE EXPOSURE(MPE)EVALUATION	5
4.1 STANDARD APPLICABLE	5
4.2 PEAK POWER MEASUREMENT RESULT:	6
4.3 MPE PREDICTION(802.11B/G/N)	7
5 APPENDIX A: EUT CONSTRUCTION PHOTOGRAPHS.....	8

This document is issued by the Company subject to its General Conditions of Service printed overleaf, available on request or accessible at www.sgs.com/terms_and_conditions.htm and, for electronic format documents, subject to Terms and Conditions for Electronic Documents at www.sgs.com/terms_e-document.htm. Attention is drawn to the limitation of liability, indemnification and jurisdiction issues defined therein. Any holder of this document is advised that information contained hereon reflects the Company's findings at the time of its intervention only and within the limits of Client's instructions, if any. The Company's sole responsibility is to its Client and this document does not exonerate parties to a transaction from exercising all their rights and obligations under the transaction documents. This document cannot be reproduced except in full, without prior written approval of the Company. Any unauthorized alteration, forgery or falsification of the content or appearance of this document is unlawful and offenders may be prosecuted to the fullest extent of the law. Unless otherwise stated the results shown in this test report refer only to the sample(s) tested and such sample(s) are retained for 90 days only

SGS-CSTC Standards Technical Services Co., Ltd.

588 West Jindu Road, Songjiang District, Shanghai, China

Telephone: +86 (0) 21 6191 5666
Fax: +86 (0) 21 6191 5655
Tino.Pan@sgs.com

Report No.: SHEMO10050056505
Page 3 of 14

3 General Information

3.1 Client Information

Applicant : Jiangsu Shinco Digital Technology Co.,Ltd.
Applicant Address: 5 West Waihuan Road, New District Changzhou ,Jiangsu 213022
China
Manufacturer: Best Buy Co.,Inc. and its subsidiaries and affiliates
Manufacturer Address: 7601 Penn Avenue South Richfield, MN55423 USA

3.2 Details of E.U.T.

Name: LCD COLOR TV&BD PLAYER
Model No.: NS-32LB451A11
Power Supply: ~120VAC 60Hz
Power Cord: N/A
Frequency Band : About 1.5
Modulation type CCK,DQPSK,DBPSK for DSSS
64QAM,16QAM,QPSK,BPSK for OFDM
Spread Spectrum: IEEE 802.11b:DSSS
IEEE 802.11g/n :OFDM
Frequency Range& Channel number 802.11b/g/n_20MHz:2412-2462MHz,11 channels
802.11 n_40MHz:2422-2452 MHz, 7 channels

3.3 Test Location

Tests were performed at:
SGS-CSTC Standards Technical Services (Shanghai) Co., Ltd.
No.588 West Jindu Road, Songjiang District, Shanghai, China. 201612.
Tel: +86 21 6191 5666 Fax: +86 21 6191 5655
No tests were sub-contracted.

3.4 Other Information Requested by the Customer

None.

SGS-CSTC Standards Technical Services Co., Ltd.

588 West Jindu Road, Songjiang District, Shanghai, China

Telephone: +86 (0) 21 6191 5666
Fax: +86 (0) 21 6191 5655
Tino.Pan@sgs.com

Report No.: SHEMO10050056505
Page 4 of 14

3.5 Test Facility

The test facility is recognized, certified, or accredited by the following organizations:

- **CNAS (No. CNAS L0599)**

CNAS has accredited SGS-CSTC Standards Technical Services (Shanghai) Co., Ltd. to ISO/IEC 17025:2005 General Requirements for the Competence of Testing and Calibration Laboratories (CNAS-CL01 Accreditation Criteria for the Competence of Testing and Calibration Laboratories) for the competence in the field of testing. Date of expiry: 2011-07-29.

- **FCC – Registration No.: 402683**

SGS-CSTC Standards Technical Services (Shanghai) Co., Ltd. has been registered and fully described in a report filed with the Federal Communications Commission (FCC). The acceptance letter from the FCC is maintained in our files. Registration No.: 402683, Expiry Date: 2012-03-17.

- **Industry Canada (IC) – IC Assigned Code: 8617A**

The 3m Semi-anechoic chamber of SGS-CSTC Standards Technical Services (Shanghai) Co., Ltd. has been registered by Certification and Engineering Bureau of Industry Canada for radio equipment testing with Registration No.: 8617A. Expiry Date: 2011-09-29.

- **VCCI (Member No.: 3061)**

The 3m Semi-anechoic chamber and Shielded Room of SGS-CSTC Standards Technical Services (Shanghai) Co., Ltd. has been registered in accordance with the Regulations for Voluntary Control Measures with Registration No.: R-3172 and C-3514 respectively. Date of Registration: 2009-11-30. Date of Expiry: 2012-03-17.

SGS-CSTC Standards Technical Services Co., Ltd.

588 West Jindu Road, Songjiang District, Shanghai, China

Telephone: +86 (0) 21 6191 5666
Fax: +86 (0) 21 6191 5655
Tino.Pan@sgs.com

Report No.: SHEMO10050056505
Page 5 of 14

4 Maximum Permissible Exposure(MPE)Evaluation

4.1 Standard Applicable

According to §1.1307(b)(1), systems operating under the provisions of this section shall be operated in a manner that ensure that the public is not exposed to radio frequency energy level in excess of the Commission's guideline.

This is a Mobile device, the MPE is required.

According to §1.1310 and §2.1093 RF exposure is calculated.

Limits for Maximum Permissible Exposure (MPE)

Frequency Range (MHz)	Electric Field Strength (V/m)	Magnetic Field Strength (A/m)	Power Density (mW/cm ²)	Averaging Time (minute)
Limits for General Population/Uncontrolled Exposure				
0.3-1.34	614	1.63	*(100)	30
1.34-30	824/f	2.19/f	*(180/f ²)	30
30-300	27.5	0.073	0.2	30
300-1500	/	/	F/1500	30
1500-15000	/	/	1.0	30

F = frequency in MHz

* = Plane-wave equipment power density

SGS-CSTC Standards Technical Services Co., Ltd.

588 West Jindu Road, Songjiang District, Shanghai, China

Telephone: +86 (0) 21 6191 5666
Fax: +86 (0) 21 6191 5655
Tino.Pan@sgs.com

Report No.: SHEMO10050056505
Page 6 of 14

4.2 Peak Power Measurement Result:

Mode	CH	Frequency (MHz)	Chain 1	Chain2	Total Power (dBm)	Limit (dBm)	Result
			Output Power (dBm)	Output Power (dBm)			
802.11b (1Mbps)	Low	2412	12.72	12.55	N/A	30	PASS
	Mid	2437	12.63	12.34	N/A	30	PASS
	High	2462	12.31	12.25	N/A	30	PASS
802.11g (6Mbps)	Low	2412	17.67	17.74	N/A	30	PASS
	Mid	2437	18.56	18.43	N/A	30	PASS
	High	2462	18.19	18.65	N/A	30	PASS
802.11n_HT20 (6.5Mbps)	Low	2412	18.74	18.86	21.81	30	PASS
	Mid	2437	18.96	18.76	21.87	30	PASS
	High	2462	18.10	18.21	21.16	30	PASS
802.11n_HT40 (13.5Mbps)	Low	2422	18.16	18.11	21.15	30	PASS
	Mid	2437	17.94	18.32	21.14	30	PASS
	High	2452	17.56	18.45	21.04	30	PASS

This document is issued by the Company subject to its General Conditions of Service printed overleaf, available on request or accessible at www.sgs.com/terms_and_conditions.htm and, for electronic format documents, subject to Terms and Conditions for Electronic Documents at www.sgs.com/terms_e-document.htm. Attention is drawn to the limitation of liability, indemnification and jurisdiction issues defined therein. Any holder of this document is advised that information contained hereon reflects the Company's findings at the time of its intervention only and within the limits of Client's instructions, if any. The Company's sole responsibility is to its Client and this document does not exonerate parties to a transaction from exercising all their rights and obligations under the transaction documents. This document cannot be reproduced except in full, without prior written approval of the Company. Any unauthorized alteration, forgery or falsification of the content or appearance of this document is unlawful and offenders may be prosecuted to the fullest extent of the law. Unless otherwise stated the results shown in this test report refer only to the sample(s) tested and such sample(s) are retained for 90 days only

SGS-CSTC Standards Technical Services Co., Ltd.

588 West Jindu Road, Songjiang District, Shanghai, China

Telephone: +86 (0) 21 6191 5666
Fax: +86 (0) 21 6191 5655
Tino.Pan@sgs.com

Report No.: SHEMO10050056505
Page 7 of 14

4.3 MPE Prediction(802.11b/g/n)

Prediction of MPE limit at a given distance

Equation from page 18 of OET Bulletin 65, Edition 97-01

$$S = PG / 4\pi R^2$$

Where: S = Power density

P = Power input to antenna

G = Power gain of the antenna in the direction of interest relative to an isotropic radiator

R = Distance to the center of radiation of the antenna

The Worst Case at Mid channel of 802.11n_HT20 mode:

Maximum peak output power at antenna input terminal:	21.87	dBm
Maximum peak output power at antenna input terminal:	153.82	mW
Duty cycle	100	%
Maximum Pav:	153.82	mW
Antenna gain:	2	dBi
Prediction distance	20	cm
Prediction frequency:	2437	MHz
MPE limit for uncontrolled exposure at prediction	1	mW/cm ²
Power density at predication frequency 2462MHz at 20(cm)distance	0.0485	mW/cm ²
The predicted power density level at 20cm is	0.485	W/m ²)

Measurement Result

The predicted power density level at 20 cm is 0.0485 mW/cm². This is below the uncontrolled exposure limit of 1 mW/cm² at 2437 MHz.

SGS-CSTC Standards Technical Services Co., Ltd.

588 West Jindu Road, Songjiang District, Shanghai, China

Telephone: +86 (0) 21 6191 5666
Fax: +86 (0) 21 6191 5655
Tino.Pan@sgs.com

Report No.: SHEMO10050056505
Page 8 of 14

5 Appendix A: EUT Construction Photographs



This document is issued by the Company subject to its General Conditions of Service printed overleaf, available on request or accessible at www.sgs.com/terms_and_conditions.htm and, for electronic format documents, subject to Terms and Conditions for Electronic Documents at www.sgs.com/terms_e-document.htm. Attention is drawn to the limitation of liability, indemnification and jurisdiction issues defined therein. Any holder of this document is advised that information contained hereon reflects the Company's findings at the time of its intervention only and within the limits of Client's instructions, if any. The Company's sole responsibility is to its Client and this document does not exonerate parties to a transaction from exercising all their rights and obligations under the transaction documents. This document cannot be reproduced except in full, without prior written approval of the Company. Any unauthorized alteration, forgery or falsification of the content or appearance of this document is unlawful and offenders may be prosecuted to the fullest extent of the law. Unless otherwise stated the results shown in this test report refer only to the sample(s) tested and such sample(s) are retained for 90 days only.

SGS-CSTC Standards Technical Services Co., Ltd.

588 West Jindu Road, Songjiang District, Shanghai, China

Telephone: +86 (0) 21 6191 5666
Fax: +86 (0) 21 6191 5655
Tino.Pan@sgs.com

Report No.: SHEMO10050056505
Page 9 of 14



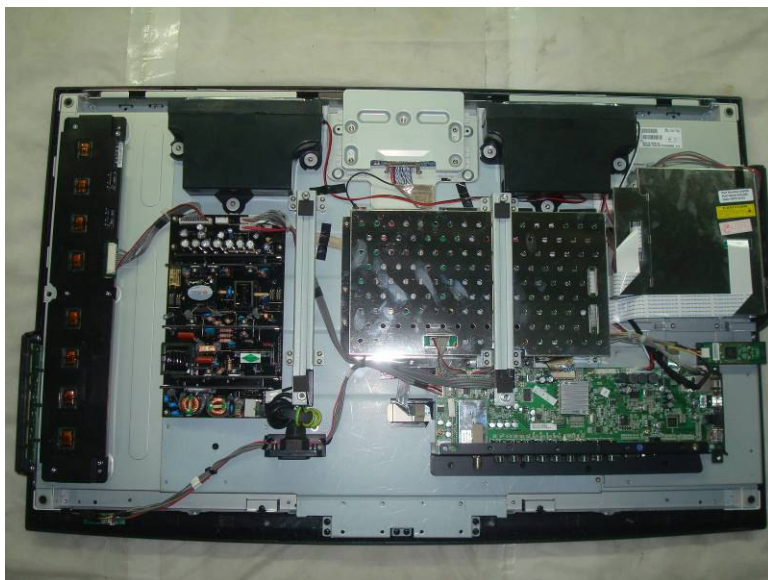
This document is issued by the Company subject to its General Conditions of Service printed overleaf, available on request or accessible at www.sgs.com/terms_and_conditions.htm and, for electronic format documents, subject to Terms and Conditions for Electronic Documents at www.sgs.com/terms_e-document.htm. Attention is drawn to the limitation of liability, indemnification and jurisdiction issues defined therein. Any holder of this document is advised that information contained hereon reflects the Company's findings at the time of its intervention only and within the limits of Client's instructions, if any. The Company's sole responsibility is to its Client and this document does not exonerate parties to a transaction from exercising all their rights and obligations under the transaction documents. This document cannot be reproduced except in full, without prior written approval of the Company. Any unauthorized alteration, forgery or falsification of the content or appearance of this document is unlawful and offenders may be prosecuted to the fullest extent of the law. Unless otherwise stated the results shown in this test report refer only to the sample(s) tested and such sample(s) are retained for 90 days only.

SGS-CSTC Standards Technical Services Co., Ltd.

588 West Jindu Road, Songjiang District, Shanghai, China

Telephone: +86 (0) 21 6191 5666
Fax: +86 (0) 21 6191 5655
Tino.Pan@sgs.com

Report No.: SHEMO10050056505
Page 10 of 14



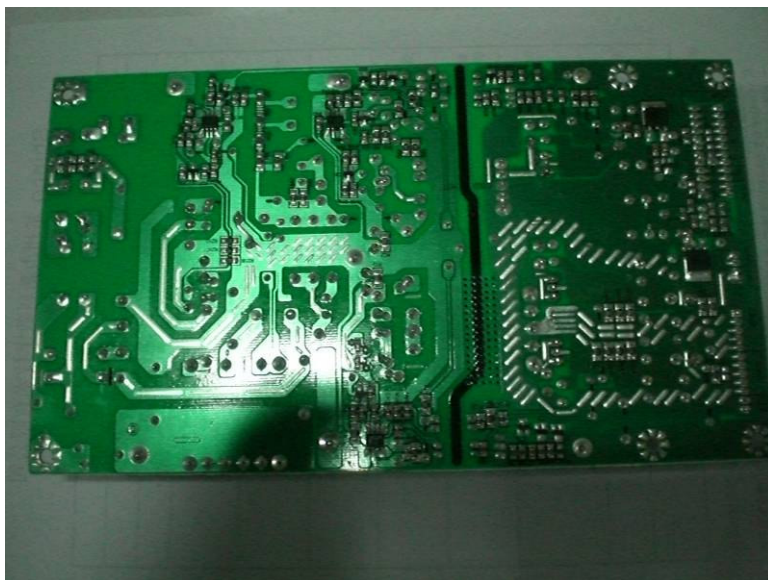
This document is issued by the Company subject to its General Conditions of Service printed overleaf, available on request or accessible at www.sgs.com/terms_and_conditions.htm and, for electronic format documents, subject to Terms and Conditions for Electronic Documents at www.sgs.com/terms_e-document.htm. Attention is drawn to the limitation of liability, indemnification and jurisdiction issues defined therein. Any holder of this document is advised that information contained hereon reflects the Company's findings at the time of its intervention only and within the limits of Client's instructions, if any. The Company's sole responsibility is to its Client and this document does not exonerate parties to a transaction from exercising all their rights and obligations under the transaction documents. This document cannot be reproduced except in full, without prior written approval of the Company. Any unauthorized alteration, forgery or falsification of the content or appearance of this document is unlawful and offenders may be prosecuted to the fullest extent of the law. Unless otherwise stated the results shown in this test report refer only to the sample(s) tested and such sample(s) are retained for 90 days only.

SGS-CSTC Standards Technical Services Co., Ltd.

588 West Jindu Road, Songjiang District, Shanghai, China

Telephone: +86 (0) 21 6191 5666
Fax: +86 (0) 21 6191 5655
Tino.Pan@sgs.com

Report No.: SHEMO10050056505
Page 11 of 14



This document is issued by the Company subject to its General Conditions of Service printed overleaf, available on request or accessible at www.sgs.com/terms_and_conditions.htm and, for electronic format documents, subject to Terms and Conditions for Electronic Documents at www.sgs.com/terms_e-document.htm. Attention is drawn to the limitation of liability, indemnification and jurisdiction issues defined therein. Any holder of this document is advised that information contained hereon reflects the Company's findings at the time of its intervention only and within the limits of Client's instructions, if any. The Company's sole responsibility is to its Client and this document does not exonerate parties to a transaction from exercising all their rights and obligations under the transaction documents. This document cannot be reproduced except in full, without prior written approval of the Company. Any unauthorized alteration, forgery or falsification of the content or appearance of this document is unlawful and offenders may be prosecuted to the fullest extent of the law. Unless otherwise stated the results shown in this test report refer only to the sample(s) tested and such sample(s) are retained for 90 days only.

SGS-CSTC Standards Technical Services Co., Ltd.

588 West Jindu Road, Songjiang District, Shanghai, China

Telephone: +86 (0) 21 6191 5666
Fax: +86 (0) 21 6191 5655
Tino.Pan@sgs.com

Report No.: SHEMO10050056505
Page 12 of 14



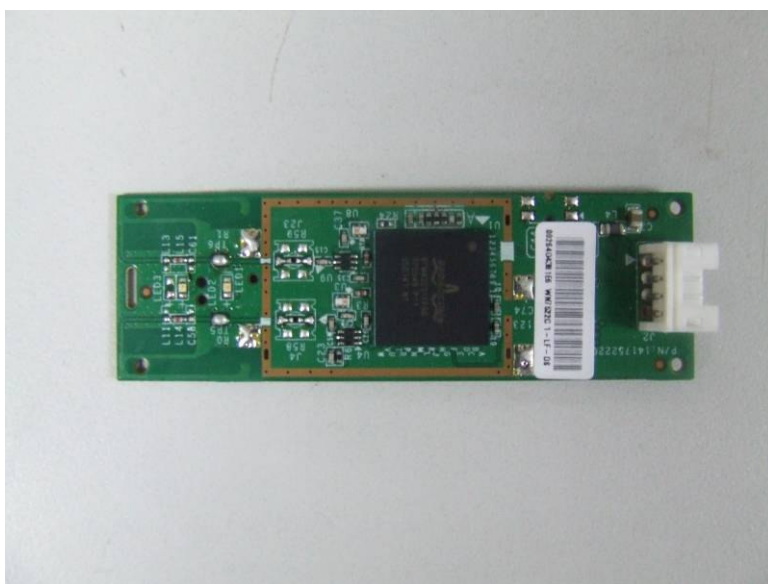
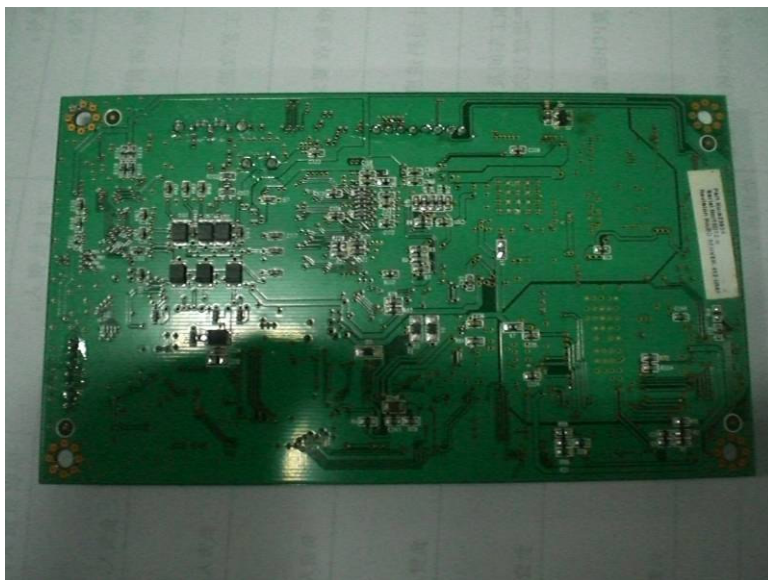
This document is issued by the Company subject to its General Conditions of Service printed overleaf, available on request or accessible at www.sgs.com/terms_and_conditions.htm and, for electronic format documents, subject to Terms and Conditions for Electronic Documents at www.sgs.com/terms_e-document.htm. Attention is drawn to the limitation of liability, indemnification and jurisdiction issues defined therein. Any holder of this document is advised that information contained hereon reflects the Company's findings at the time of its intervention only and within the limits of Client's instructions, if any. The Company's sole responsibility is to its Client and this document does not exonerate parties to a transaction from exercising all their rights and obligations under the transaction documents. This document cannot be reproduced except in full, without prior written approval of the Company. Any unauthorized alteration, forgery or falsification of the content or appearance of this document is unlawful and offenders may be prosecuted to the fullest extent of the law. Unless otherwise stated the results shown in this test report refer only to the sample(s) tested and such sample(s) are retained for 90 days only.

SGS-CSTC Standards Technical Services Co., Ltd.

588 West Jindu Road, Songjiang District, Shanghai, China

Telephone: +86 (0) 21 6191 5666
Fax: +86 (0) 21 6191 5655
Tino.Pan@sgs.com

Report No.: SHEMO10050056505
Page 13 of 14



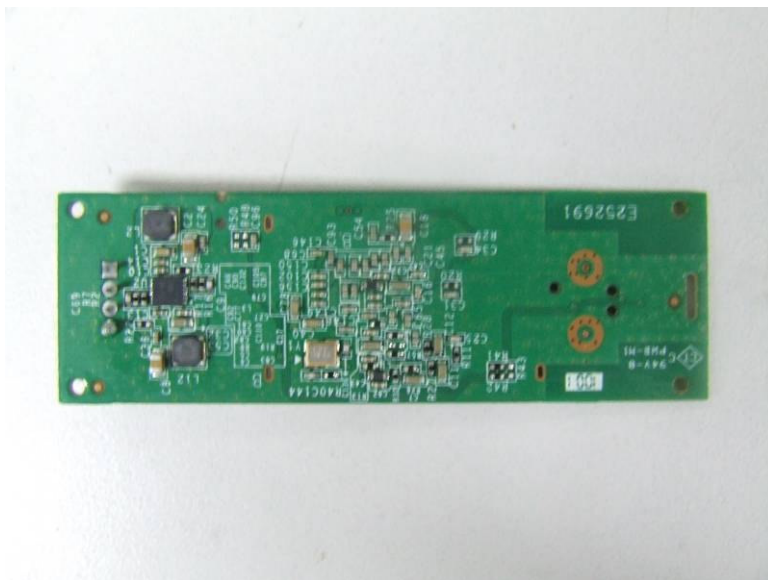
This document is issued by the Company subject to its General Conditions of Service printed overleaf, available on request or accessible at www.sgs.com/terms_and_conditions.htm and, for electronic format documents, subject to Terms and Conditions for Electronic Documents at www.sgs.com/terms_e-document.htm. Attention is drawn to the limitation of liability, indemnification and jurisdiction issues defined therein. Any holder of this document is advised that information contained hereon reflects the Company's findings at the time of its intervention only and within the limits of Client's instructions, if any. The Company's sole responsibility is to its Client and this document does not exonerate parties to a transaction from exercising all their rights and obligations under the transaction documents. This document cannot be reproduced except in full, without prior written approval of the Company. Any unauthorized alteration, forgery or falsification of the content or appearance of this document is unlawful and offenders may be prosecuted to the fullest extent of the law. Unless otherwise stated the results shown in this test report refer only to the sample(s) tested and such sample(s) are retained for 90 days only.

SGS-CSTC Standards Technical Services Co., Ltd.

588 West Jindu Road, Songjiang District, Shanghai, China

Telephone: +86 (0) 21 6191 5666
Fax: +86 (0) 21 6191 5655
Tino.Pan@sgs.com

Report No.: SHEMO10050056505
Page 14 of 14



This document is issued by the Company subject to its General Conditions of Service printed overleaf, available on request or accessible at www.sgs.com/terms_and_conditions.htm and, for electronic format documents, subject to Terms and Conditions for Electronic Documents at www.sgs.com/terms_e-document.htm. Attention is drawn to the limitation of liability, indemnification and jurisdiction issues defined therein. Any holder of this document is advised that information contained hereon reflects the Company's findings at the time of its intervention only and within the limits of Client's instructions, if any. The Company's sole responsibility is to its Client and this document does not exonerate parties to a transaction from exercising all their rights and obligations under the transaction documents. This document cannot be reproduced except in full, without prior written approval of the Company. Any unauthorized alteration, forgery or falsification of the content or appearance of this document is unlawful and offenders may be prosecuted to the fullest extent of the law. Unless otherwise stated the results shown in this test report refer only to the sample(s) tested and such sample(s) are retained for 90 days only.