



1/4-20

12.5 mm



3/8-16

25.0 mm



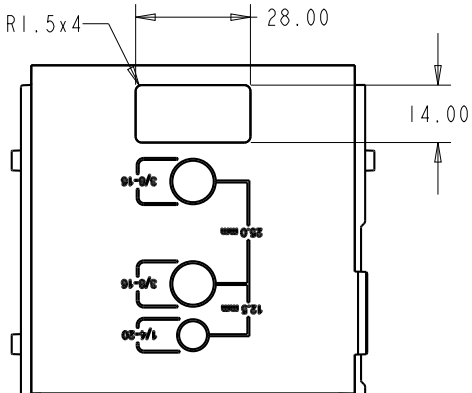
3/8-16

RED EPIC

FCC ID: YGA001

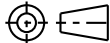
710000000000





REVISIONS				
ECO	REV	DESCRIPTION	NAME	DATE
	11	DRAWING OF LABEL DIMENSIONS	J. SANDERS	01/27/10

THIRD-ANGLE PROJECTION



PROPRIETARY AND CONFIDENTIAL

THE INFORMATION CONTAINED IN THIS DRAWING IS THE SOLE PROPERTY OF RED DIGITAL CINEMA. ANY REPRODUCTION IN PART OR AS A WHOLE WITHOUT THE WRITTEN PERMISSION OF RED DIGITAL CINEMA IS PROHIBITED.

UNLESS OTHERWISE SPECIFIED:
DIMENSIONS ARE IN MILLIMETERS
DEFAULT TOLERANCES: SEE NOTES

INTERPRET GEOMETRIC TOLERANCING PER: ASME Y14.5M-1994

MATERIAL:
SEE NOTES

FINISH:
SEE NOTES

DO NOT SCALE DRAWING

	NAME	DATE
DRAWN	ALLOY PD	08/04/10
CHECKED	REFER TO ECO	REFER TO ECO
ENG APPR	REFER TO ECO	REFER TO ECO
MFG APPR	REFER TO ECO	REFER TO ECO
O.A.	REFER TO ECO	REFER TO ECO

RED
DIGITAL CINEMA
20291 VALENCIA CIRCLE
LAKE FOREST, CA 92630

TITLE:
BOTTOM ENCLOSURE - LABEL RECESS

SIZE	DWG NO:	REV
B	125-1360	11

SCALE: 1.000 SHEET 1 OF 1

