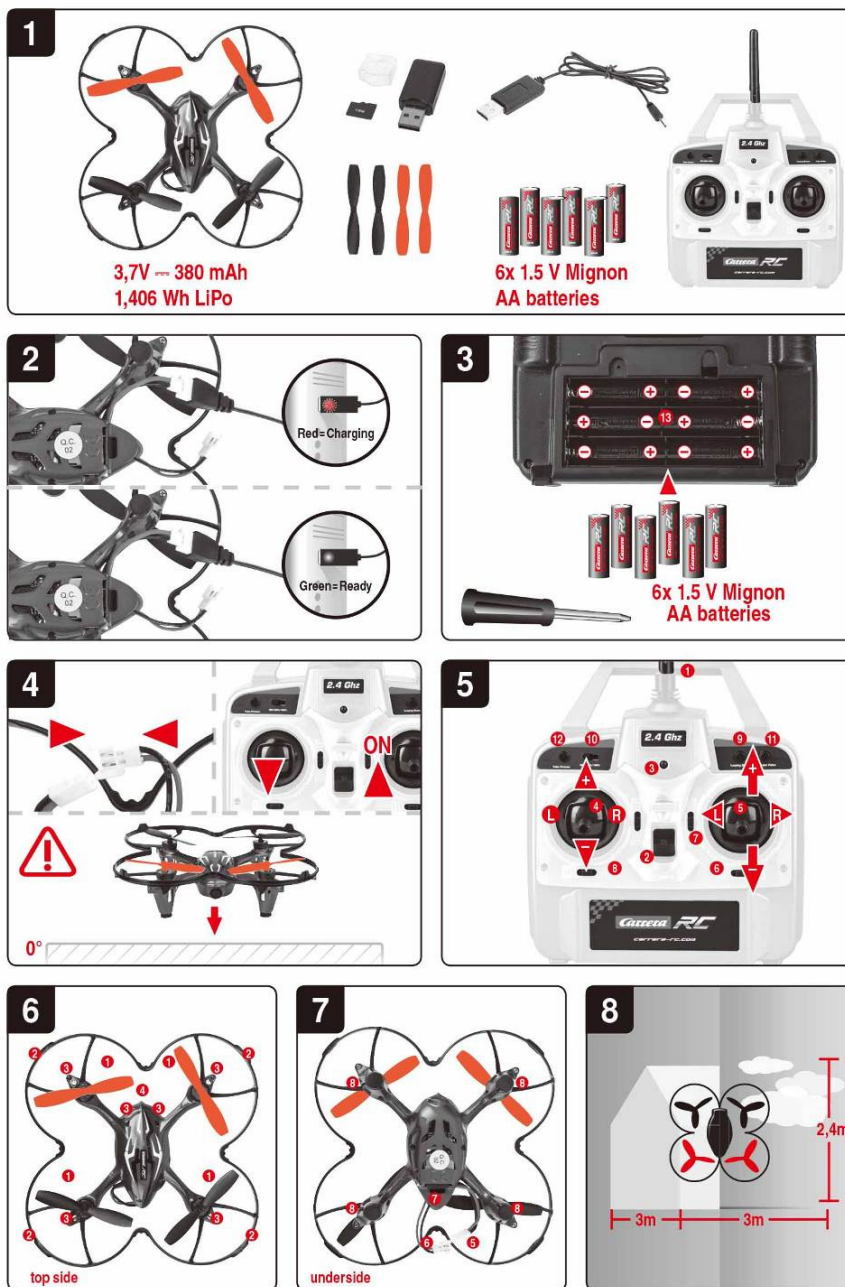


1.6 User Manual

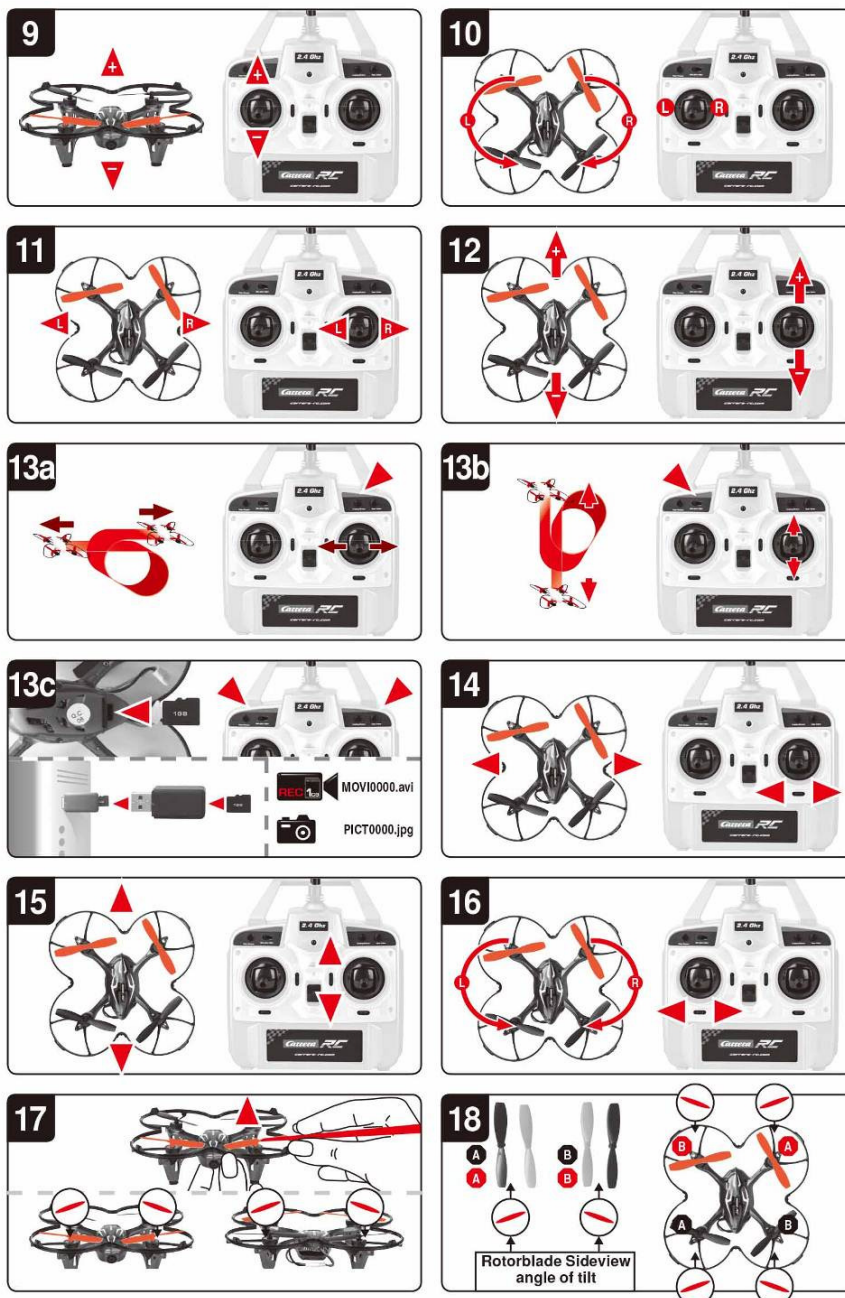


Model 503003 is a RC quadcopter model which consists of a transmitter of model 401011 and receiver of model 503003.



2

07/2014 - 1



Dear customer

Congratulations! You bought a Carrera RC Quadcopter which has been manufactured according to today's state-of-the-art technology. As it is our constant endeavour to develop and improve our products, we reserve the right to make modifications, either of a technical nature or with respect to features, materials and design, at any time, and without prior notice. For this reason, no claims will be accepted for any slight deviations in your product from the data and illustrations contained in these instructions. These operating and assembly instructions are an integral part of the product. Non-observance of these operating instructions and the safety instructions they contain will render the guarantee null and void. These instructions are to be kept for future reference and in the event that the product is passed on to a third party.

Guarantee conditions

Carrera products are technically advanced products (NO TOYS) which should be handled with care. It is important to follow the directions given in the operating instructions. All components have been subjected to careful inspection (technical modifications and alterations to the model for the purpose of product improvement are reserved).

Should any faults nevertheless occur, guarantee is assumed within the scope of the following conditions:

In accordance with the following provisions, Stadlbauer Marketing + Vertrieb GmbH (hereinafter referred to as "manufacturer") warrants to the endconsumer (hereinafter referred to as "customer") that the Carrera RC-model-Quadcopter (hereinafter referred to as "product") delivered to the customer shall be free from defects in material or workmanship for two years from the date of purchase (guarantee period). Such defects will, at the manufacturer's option, either be repaired by the manufacturer or fixed by delivering new or refurbished parts free of charge. The warranty does not cover failure due to normal wear and tear, (e.g. to batteries, rotor blades, cabin covering, gear wheels etc.), or damage as a result of improper handling/misuse or unauthorised interference. Any other customer's claims asserted against the manufacturer, especially action for damages, shall be excluded.

The contractual and statutory rights of the customer against the seller (supplementary performance, rescission of the contract, abatement, compensation) which exist with the product not having been free from defects at the time of the passing of risk, shall remain unaffected by this warranty.

Claims from this special warranty shall only be valid if:

- the defect reported has not arisen by damage caused by unintended use or misuse as specified in the instruction manual,
- the failure of the product is not due to normal wear and tear
- the product does not show any signs resulting from repairs or other interferences carried out by workshops not having been authorised by the manufacturer,
- the product has only been operated with accessories authorised by the manufacturer and
- the product is sent in together with the original proof of purchase (invoice / receipt) and the completely filled in warranty card which has not been altered in any way.

Guarantee cards cannot be replaced.

Note for EU countries: Reference is hereby made to the seller's statutory guarantee obligation, to the extent that this guarantee obligation is not restricted by the product guarantee.

The manufacturer shall bear the costs for sending in and returning the product.

This warranty shall be valid to the extent aforementioned and under the above-named circumstances (including the submission of the original proof of purchase also in case of resale) for any future owner of the product.

Declaration of conformity

Stadlbauer Marketing + Vertrieb GmbH hereby declares that this model including the controller conforms with the fundamental requirements of the following EC directives: EC Directives 2009/48 and 2004/108/EC regarding electromagnetic compatibility and the other relevant regulations of Directive 1999/5/EC (R&TTE).

The original declaration of conformity can be requested from carrera-rc.com.



Warning!

A remote-controlled Quadcopter is NOT A TOY and is only suitable for teenagers over the age of 14!

This product is not intended for use by children without supervision of a parent. Inappropriate use may result in severe injuries and/or damage to property.

It has to be operated with care and caution and requires both mechanical and mental skills. The operating instructions contain notes on safety and technical regulations as well as information on maintaining and operating the product. It is indispensable to read these instructions thoroughly before the first usage. Only this helps to avoid accidents with injuries and damage.

Only use the Quadcopter in closed rooms which provide sufficient space and follow all instructions given in this manual. Make sure that no loose objects, including clothes, or other objects like pens or screwdrivers can become entangled in the rotor blades or can get in contact with them. Especially take care that your hands DO NOT get close to the rotor blades!

As user of this product you are solely responsible for handling it safely in order to ensure that neither you nor other persons or their property suffer damages or are endangered.

- Never use your model with weak remote control batteries.
- Avoid busy areas. Always make sure that there is enough space.
- Preferably do not use your model on an open street or in public areas in order not to endanger or hurt anyone.
- Exactly observe the instructions and warnings for this product and for any possible additional equipment (battery charger, rechargeable batteries etc.) being used by you.
- Should the Quadcopter come into contact with any living thing or solid object, immediately return the gas control to zero, in other words the left-hand joystick must be at the stop at the bottom of the slide!
- Make sure that all chemicals, small parts and electrical components are out of children's reach.
- Avoid any moisture as this might do damage to the electronics.
- There is a risk to suffer severe injury or even death if you put parts of your model into your mouth or lick them.

If you do not agree to these terms please immediately return the complete Quadcopter model in new and unused condition to the retailer.

Important information concerning Lithium Polymer rechargeable batteries

Lithium-Polymer (LiPo) rechargeable batteries are significantly more sensitive than traditional alkali- or NiMH-rechargeable batteries normally used with radio control units. Therefore the instructions and warnings have to be observed in detail. In case of improper use of LiPo rechargeable batteries there is a danger of fire. Always follow the manufacturers' instructions if you dispose of LiPo rechargeable batteries.

Regulations on disposal for waste electrical and electronic equipment (WEEE)



This symbol, showing refuse bins with a cross through them, denotes that empty batteries, rechargeable batteries, button cells, rechargeable battery packs, equipment batteries, disused electrical equipment, etc. should not be disposed of in domestic refuse, as they are harmful to the environment and health.

Please help to preserve environment and health and talk to your children about the correct disposal of used batteries and disused electrical equipment. Batteries and disused electrical equipment should be handed in to the usual collection points where they can be properly recycled. Do not mix dissimilar battery types or employ new and used batteries together. Empty batteries should be removed from the product. Do not attempt to recharge non-rechargeable batteries.

WARNING! Rechargeable batteries should only be charged under adult supervision. **Never leave the battery unattended while it is charging.** Exhausted batteries are to be removed from the toy. Rechargeable batteries should be removed from the product before charging. Supply terminal are not to be short-circuited. Only use the batteries recommended or equivalent types.

If in regular use the charger must be examined for damage to the cord, plug, covers and all other parts. If any signs of damage are found the charger may only be used again after repair work has been completed.

Guidelines and warnings for the use of LiPo rechargeable batteries

- You have to charge the attached 3.7 V --- 380mAh/1,406Wh LiPo rechargeable battery in a safe place and at a safe distance to flammable material.
- Never leave the battery unattended while it is charging
- After a flight, the rechargeable battery has to cool down to the ambient air temperature before charging it.
- You must always use the corresponding LiPo charging unit (USB cable / remote control). In case of non-compliance with these directions there is a danger of fire resulting in a health risk and/or damage to property. NEVER use any other battery charger.
- Should the rechargeable battery swell or deform while discharging or recharging, you have to immediately stop charging or discharging the battery. Take the battery out as quickly and carefully as possible and place it in a safe and open area outside any inflammable material and watch it for at least 15 minutes. In case you continue charging or discharging a battery which has already started to swell or deform there is a danger of fire! Even in case of slight deforming or ballooning the rechargeable battery has to be taken out of operation.
- Store the rechargeable battery at ambient temperature in a dry place.
- Always recharge the battery immediately after use to prevent its becoming deep discharged. Please make sure to allow a pause of about 20 minutes between finishing the flight and recharging the battery. Recharge the battery occasionally (suggested every 2-3 months). Failure to treat the battery as described above can lead to its becoming defective.
- When transporting or temporarily storing the rechargeable battery the temperature should be between 5-50°C. If possible, do not store the battery or the model in a car and do not expose it to direct sunlight. In case the battery is broiled it can be damaged or catch fire.

Note: If the battery voltage/output is low you will recognise that a considerable trim and/or controlling is necessary to avoid that the Quadcopter starts trundling. This usually occurs before reaching a battery voltage of 3 V and it is a good moment to end the flight.



Contents of package

- 1**
- 1x Quadcopter
 - 1x Controller
 - 1x USB charging cable
 - 1x USB adapter
 - 1x Micro SD-card
 - 1x Set of replacement parts
 - 6x 1.5 V Mignon AA batteries (non-rechargeable)

Recharging the LiPo rechargeable battery

Make sure you only charge the LiPo rechargeable battery supplied with the LiPo charging unit also supplied (USB cable and remote control). If you try to charge the rechargeable battery with a different LiPo battery charger or any other battery charger, this might cause serious damage. Please carefully read the previous chapter with warnings and guidelines on the usage of rechargeable batteries before proceeding. Supply terminals are not to be short-circuited. You can charge the rechargeable battery fitted in the Quadcopter with its USB charging cable from a USB port on a computer:

- 2**
- Charging via computer:**
- **Rechargeable batteries are to be removed from the model before being charged.**
 - Connect the USB charging cable with the USB port of a computer. The LED on the USB charger cable lights green indicating that the charger unit is correctly connected to the computer. If you plug in a Quadcopter with a discharged battery, the LED on the USB charging cable lights up red and shows that the Quadcopter battery is being charged. The USB charging cable and the charging socket on the Quadcopter are designed to make incorrect connection impossible.
 - It takes about 60 minutes to recharge a discharged battery (but NOT a deep-discharged one). When the battery is fully charged, the LED display on the USB charger cable lights up green again.

Note: when supplied, the lipo-battery is already partially charged. So the first charging cycle may well take less time.

It is essential to follow the connection sequence given above! If you have the charger cable only connected to the quadcopter, and not to a source of electricity, a green LED display indicates that there is still power in the battery. The green LED display does not necessarily indicate the battery is still adequately charged.

Undo the plugged connection on the Quadcopter when you are not using the Quadcopter. Failure to observe this precaution may cause battery damage!

Inserting the batteries in the remote control

- 3**
- Open the battery compartment with a screwdriver and insert the batteries in the remote control. Please keep in mind the correct polarity. After having closed the compartment you can check all functions of the remote control with the help of the power-switch on the front.
- With the power switch turned ON and functioning correctly, the top centre LED on the remote control will light up red.
- When the control LED flashes rapidly, the batteries in the controller must be changed.

Frequency bind between model and remote control

- 4**
- The Carrera RC Quadcopter and the remote control are frequency bound at purchase. If initially there are any problems with communication between the Carrera RC Quadcopter and the remote control, please carry out a new frequency bind.

- Connect the battery in the model.
- The LEDs on the quadcopter light up continuously.
- Switch on the controller at the power switch.
- Push the left-hand joystick, i.e. the throttle lever, right to the top, then fully downwards into the zero position.
- The LEDs on the quadcopter now flash rhythmically. The binding has now been successfully established. The LED on the controller now lights continuously.

• WARNING! Immediately after switching it on, place the Quadcopter on a flat and level surface. The gyro-system will then set itself automatically.

Range of functions of the remote control

- 5**
1. Aerial
 2. Power switch (ON / OFF)
 3. Control LED
 4. Gas
 5. Circling
 6. Forwards / backwards right / left banking
 7. Trimmer for right / left banking
 8. Trimmer for forwards / backwards
 9. Trimmer for rotation
 10. Looping Button
 11. Beginner/Advanced switch (30% / 60% / 100%)
 12. "Take video"/record video button
 13. "Take picture"/take photo button
 13. Battery compartment

Description of the Quadcopter

- 6**
1. Rotor system
 2. Rotor protection cage
 3. LEDs
 4. Video camera
 5. Battery cable
 6. Quadcopter connecting plug
 7. SD-card slot
 8. Video LED

Choosing the flight area

- 8**
- When being prepared for the first flight you should choose a closed room which is as large as possible without any persons or obstacles. Due to its size and controllability, experienced pilots may be able to fly the Quadcopter in relatively small rooms. For your first flights we strongly recommend you choose a room with a minimum floor space of 3 x 3 metres and 2.40 metres in height. After having trimmed your Quadcopter for flight and made yourself familiar with the controller and its functions you may start flying in smaller and less open environments. Please note that in spite of calm conditions near the ground, it can be very windy a little further from the ground. If this instruction is ignored, the Quadcopter may suffer irreparable damage.

Checklist for flight preparation

This checklist is not a substitute for the contents of the operating instructions. Although it can be used as a quick-start-guide, we strongly recommend you first to read the operating instructions in detail before you proceed.

- Check the contents of the package.
- Connect the charging unit to the source of power.
- Charge the lipo-battery as described in the section "Recharging the LiPo rechargeable battery".
- Fit 6 AA batteries in the controller, making sure their polarity is correct.
- Look for a suitable environment for flying.
- Fit the Micro SD-card in the quadcopter as described in **13**.
- **WARNING! Immediately after switching it on, place the Quadcopter on a flat and level surface. The gyro-system will then set itself automatically.**
- The LEDs on the quadcopter flash red.
- Switch on the controller at the ON/OFF switch. Be sure to check the Beginner-Advanced switch (**10**). Push the left-hand joystick, i.e. the throttle lever, right to the top, then fully downwards into the zero position.
- Allow the Quadcopter a few moments until the system is correctly initialised and is ready for operation. The LED in the Quadcopter now lights continuously. The LED on the controller now lights continuously.
- Repeat the above points as required, if you wish to fly more Quadcopters at the same time.
- Check the control system.
- Make yourself familiar with the control system.
- Trim the Quadcopter as necessary as described under **14 15 16**, so that when hovering it no longer moves from the spot without a command from the controller.
- The Quadcopter is now ready to be flown.
- If the Quadcopter displays no functions, retry the above binding procedure.
- Fly the model.
- Land the model.
- **Disconnect the battery plug connection.**
- Always switch off the remote control last.

Flying the 4-channel Quadcopter

NOTE!
Take care particularly in the first few flights to move the lever on the controller very gently and not over-hurriedly. As a rule, only very small movements of the respective levers are necessary to carry out the desired control commands!

If you notice that the Quadcopter moves forwards or to the side without your touching the respective lever, please adjust the trim of the Quadcopter as described in **13 15 16**.

- 9** +/- Gas (up / down)
To start or to fly higher, push the gas lever on the left cautiously forwards. To land or fly lower, push the gas lever on the left cautiously backwards.
- 10** To make the Quadcopter circle to the left or the right on the spot, move the lever on the left cautiously to the left or the right.
- 11** To fly the Quadcopter to the left or the right, push the lever on the right cautiously to the left or the right.
- 12** To fly the Quadcopter forwards or backwards, push the lever on the right cautiously forwards or backwards.



Looping function

WARNING! ONLY FOR EXPERIENCED PILOTS!

13a When you press the looping button, an audible signal sounds until you move the right-hand joystick either up or down, or right or left. The Quadcopter then carries out the loop or roll in the respective direction. Before you do this, make sure you have ample room on all sides (about 2.5 m – 9').

Beginner/Advanced switch

WARNING! 100 % IS ONLY FOR EXPERIENCED PILOTS!

13b 30 % = beginner mode
Signal sounds once on switching over. Looping the loop and rollovers are possible as explained in **13a**.

60 % = medium mode
The quadcopter reacts more sensitively than in 30 % mode. Signal sounds twice on switching over. Looping the loop and rollovers are possible as explained in **13a**.

100 % = advanced mode -> 3D mode.
The Quadcopter reacts very sensitively to joystick movements. Signal sounds three times on switching over.

Video & photo function

13c Fit the 1GB Micro SD-card underneath at the rear in the SD card slot in the quadcopter. Make sure the metal contacts on the SD-card are facing in the right direction (see figure).
WARNING! Be certain to fit the SD-card in the quadcopter before connecting the battery!

Recording a video:
Press the "Take video" button to begin video-recording. Press the button again to stop recording. While recording, the LED on the right next to the SD-card slot on the Quadcopter flashes red. No sound is recorded.

Taking a photo:
Press the "Take picture" button on the left, and the camera takes a photo. The LED on the right next to the SD-card slot on the Quadcopter flashes red once after each photo is taken. If the SD-card is full, the LED will flash red / green. In this case, delete videos or photos from the SD-card.

Playing back the videos/looking at photos:
Plug the Micro-SD-card into the USB adapter and connect this to a computer. You will now find a removable storage device in "File Explorer". You will find the video files e.g. "MOV10000.avi" on the data carrier in the file "Video". The videos are AVI-files. This video format is supported by many video players as standard. You will find the photo files, e.g. "P10T0000.jpg" in the file folder "Photo". The photos are JPG files – a standard format for photos. If you should unintentionally delete either file "Video" or "Photo", it will be recreated on the next application in the Quadcopter.

Trimming the Quadcopter

14 When hovering, if the Quadcopter flies to the left or right without you moving the lever for left / right movement, please proceed as follows:
If the Quadcopter moves on its own fast or slow sideways to the left, press the lower right trimmer for right / left tilt in steps to the right. If the Quadcopter moves right, press the trimmer for right / left tilt in steps to the left.

15 When hovering, if the Quadcopter flies forwards or backwards without you moving the lever for forwards or backwards movement, please proceed as follows:
If the Quadcopter moves on its own fast or slow forwards, press the upper right trimmer for forwards / backwards in steps downwards. If the Quadcopter moves backwards, press the trimmer for forwards / backwards in steps upwards.

16 When hovering and without you moving the lever for circling on the spot, if the quadcopter rotates to left or right, proceed as follows: If the quadcopter rotates quickly or slowly to the left around its own axis, press the trimmer for rotation below left in steps to the right. If the quadcopter rotates to the right, press the trimmer for rotation in steps to the left.

Changing the rotor blades

17 Use a smooth narrow object to help draw off a rotor blade if necessary. Make sure that you draw the rotor blade with great care vertically upwards, and hold the motor from below to stabilise it.

18 **WARNING!**
Be sure to note the marking and colour, also the tilt angle of the rotor blades!
Front left: red – marking "B"
Front right: red – marking "A"
Rear right: black – marking "B"
Rear left: black – marking "A"

Troubleshooting

Problem: Remote control does not work.
Cause: The ON/OFF-power switch is turned "OFF".
Solution: Turn the ON/OFF-power switch "ON".
Cause: The batteries have been wrongly inserted.
Solution: Check if the batteries have been correctly inserted.
Cause: The batteries do not have enough power.
Solution: Insert new batteries.

Problem: The Quadcopter cannot be controlled with the remote control.
Cause: The power switch on the remote control is turned "OFF".
Solution: First turn the power switch on the remote control "ON".
Cause: The remote control is possibly not correctly frequency bound with the receiver on the Quadcopter.
Solution: Please carry out the binding procedure as described in "Checklist for flight preparation".

Problem: The Quadcopter does not lift.
Cause: The rotor blades rotate too slowly.
Solution: Push the throttle up.
Cause: The battery's power is not sufficient.
Solution: Charge the battery (see chapter "Charging the battery").

Problem: During flight, the Quadcopter loses speed and height without any obvious reason.
Cause: The battery is too weak.
Solution: Charge the battery (see chapter "Charging the battery").

Problem: The quadcopter only flies in a circle or turns over on starting.
Cause: Rotor blades incorrectly fitted or damaged.
Solution: Fit rotor blades / replace rotor blades as described in **17** / **18**.

For the latest version of these operating instructions and information on replacement and spare parts available, please visit carrera-rc.com in the service area.

Errors and changes excepted
Colours / final design – changes excepted
Technical changes and design-related changes excepted
Pictograms = symbolic photos

This device complies with Part 15 of the FCC Rules. Operation is subject to the following two conditions: (1) this device may not cause harmful interference, and (2) this device must accept any interference received, including interference that may cause undesired operation.

Changes or modifications not expressly approved by the party responsible for compliance could void the user's authority to operate the equipment.

This device complies with Industry Canada's licence-exempt RSS standard(s).

Operation is subject to the following two conditions:

- (1) This device may not cause interference; and
- (2) This device must accept any interference, including interference that may cause undesired operation of the device.



DISTRIBUTORS

AUSTRIA
Stadtbauer Marketing +
Vertrieb GmbH
 Rennbahn Allee 1
 A-5412 Puch / Salzburg
 Phone ++43 665 889210
 Fax ++43 609 88921510
 Internet www.carrera-rc.com

GERMANY
Stadtbauer Marketing +
Vertrieb GmbH
 Rennbahn Allee 1
 A-5412 Puch / Salzburg
 Phone ++49 911 7099 0
 Fax ++49 911 7099 119
 Internet www.carrera-rc.com

HONG KONG
Stadtbauer (HK) Ltd.
 Room 1917,
 North Tower,
 Concordia Plaza
 1 Science Museum Road,
 Tsimshatsui East,
 Kowloon Hong Kong
 Phone ++852 2722 0620
 Fax ++852 2367 0792
 Internet www.carrera-rc.com

USA / CANADA / MEXICO
Carrera of America Inc.
 2 Corporate Drive
 Cranbury,
 NJ 08512,
 USA
 Phone ++1 609 409 8510
 Fax ++1 609 409 8610
 Email reception@carrera-toys.com
 Internet www.carrera-rc.com

BENELUX
Stadtbauer Marketing +
Vertrieb GmbH
 Landsheerlaan 33
 NL-6114 MP Susteren
 Email service.benelux@carrera-toys.com
 Internet www.carrera-rc.com

FRANCE
Stadtbauer Marketing +
Vertrieb GmbH
 21 B, Route Nationale
 Domaine de l'Harcardine
 FR-55320 Ennелиeres-en-Weppes
 Email carrera-toys@orange.fr
 Internet www.carrera-rc.com

HUNGARY
Magyarország Importer
Stadtbauer Marketing +
Vertrieb GmbH
 Rennbahn Allee 1
 A-5412 Puch / Salzburg
 Phone ++36 0355550500
 Email office@stadtbauer-toys.hu
 Internet www.carrera-rc.com
Service:
 GAME PARK - VINCZE ZOLTÁN
 Berky Lili utca 36,
 1121 Budapest - Hungary
 Phone ++36 1 258-7800
 Email vinzoz@online.hu

POLAND
Stadtbauer Marketing +
Vertrieb GmbH
 Rennbahn Allee 1
 A-5412 Puch / Salzburg
 Phone ++48 22 645 14 20
 Fax ++48 22 645 14 21
 Email office@stadtbauer-toys.pl
 Internet www.carrera-rc.com
Service:
 REKMAN
 ul. Fabryczna 14
 53-609 Wrocław - Poland
 Phone ++48 71 359 46 19
 Fax ++48 71 359 46 21
 Email jbojda@rekman.com.pl

SPAIN / PORTUGAL
Stadtbauer Iberia SLU
 Calle Fluxa 97, 1º 2º
 08019 Barcelona - Spain
 Phone ++34 93 303 63 35
 Email contacto@carrera-toys.com
 Internet www.carrera-rc.com

CARRERA RC DISTRIBUTORS

AUSTRALIA
 Zimble Pty Ltd.
 893 Heidelberg Road
 Yarrhoe, Victoria 3079
 Australia
 Phone ++61 3 8481 1000
 Fax ++61 3 9497 2311
 Email sales@zimble.com.au
 Internet www.zimble.com.au

BULGARIA
 Ivantchev Ltd.
 76a, Maria Luiza Blvd.
 BG-1202 Sofia
 Phone ++359 283 20020
 Fax ++359 283 22020
 Email ivantchev@del.bg

CHINA
 Shanghai Wowgame Commercial
 Company Ltd.
 Room 110, Tower 1,
 German Centre, 88 Keyuan Road,
 (Zhangjiang Hi-Tech Park),
 Pudong, Shanghai, (Zip: 201203)
 China
 Phone ++86 21-53921692
 Mobile ++86 15577449439
 Email eddychen@wowgame.com.cn
 Internet www.wowgame.net.cn

CZECH REPUBLIC
 ConQuest entertainment a.s.
 Hloubetinska 11
 CZ-198 00 Praha 9 - Hloubetin
 Phone ++420 284 000 175
 Fax ++420 284 000 101
 Email radim.kalo@conquest.cz
 Internet www.autodrehy.cz

ESTONIA
 Anvol Ltd.
 Medikse 7
 EE-24114 Maardu
 Phone ++372 63 89 100
 Fax ++372 63 89 101
 Email anvol@anvol.ee
 Internet www.anvol.ee

HONG KONG
 Chun Lee (China) Industrial Limited
 RM. 1801-S, 18/F.,
 King Palace Plaza,
 52A Sha Tsui Road, Tsuen Wan,
 N.T. Hong Kong
 Email eddychan@yu-lee.com
 Mobile ++852 9103 6679

INDIA
 Karma Solutions
 12/A, Oshiwara Industrial Centre,
 Link RD, Goregaon (W)
 Mumbai - 400104
 India
 Phone ++91-22-66716714
 Mobile ++91 9920075400
 Email karmasolutions7e@gmail.com
 Internet www.karma-toys.com

ISRAEL
 TOP PLAY ISRAEL (TPI) LTD
 Simat, Abayor Str. 8A - Industrial Zone
 Segola - Petach Tikva, post 48691
 Israel
 Phone ++972 3 9323767
 Fax ++972 3 9086074
 Mobile ++972 52 6338966
 Email top.play@tpi.net.il
 Internet www.TopPlay-toys.com

LEBANON
 F ALJAD
 P.O. Box 1555, Jounieh Lebanon
 Twin Towers Building Flk A
 Sarba High Way
 Jounieh - Lebanon
 Phone ++961 9 840505
 Fax ++961 9 635473
 Email fawad@dm.net.lb
 nad.ajoud@fawad.com

NEW ZEALAND
 F W Cave Ltd.
 15 Old North Road
 P O Box 279
 Kumeu 0641
 Auckland - New Zealand
 Phone ++64 9 415 7766
 Fax ++64 9 415 7089
 Email sales@fwcave.co.nz
 Internet www.fwcave.co.nz

ROMANIA
 Seven Springrom srl.
 Piata 22 Decembrie nr. 19
 RO-610007 Pitesti Neamt, jud. Neamt
 Phone ++40-233-221117
 Email office@sevenroys.ro
 Internet www.seventoys.ro

RUSSIA
 Unitoy MSK Ltd.
 Mnovniki Street 7, Building 2
 RU-123308, Moscow
 Phone ++7 495 276 0286
 Fax ++7 499 946 4616
 Email office@unitoys.ru
 Internet www.unitoys.ru

SERBIA / MONTENEGRO
 Cool Play d.o.o.
 Zilka Davidovica 13
 11000 Beograd - Serbian
 Phone ++381 11 3809143
 Fax ++381 11 3809144
 Email office@coolplay.rs

SWITZERLAND
 Waldmeier AG
 Neustrasse 50
 CH-4623 Neuendorf
 Phone ++41 62 387 98 19
 Fax ++41 62 387 98 20
 Email info@waldmeier.ch
 Internet www.waldmeier.ch

UNITED KINGDOM
 The Hobby Company Ltd.
 Garforth Place, Knowlhill
 Milton Keynes MK5 8PG - UK
 Phone ++44 1908 209 480
 Fax ++44 1908 209 900
 Email enquiries@hobbyco.net
 Internet www.hobbyco.net

UNITED ARAB EMIRATES
 Toyworld Distributor
 P.O. Box 289, Gibco Building
 Al Wahda Street, Sharjah
 United Arab Emirates
 Phone ++971 6 533 7418
 Fax ++971 6 533 6892
 Email toyworld@esalholding.net



carrera-rc.com

Stadtbauer Marketing + Vertrieb GmbH - Rennbahn Allee 1 - 5412 Puch / Salzburg - Austria