

# Seed™ Smart Energy Efficiency Device

## Remote



## USER GUIDE

for #SED-10R

Customer Support:

866-377-4771

[support@goecolife.com](mailto:support@goecolife.com)

[GoECOlife.com](http://GoECOlife.com)



# Table of Contents

Product Specifications & Diagram.....	2
Caution .....	3
Technical Information .....	4-5
Introduction .....	6
Set Up Link.....	7
Operation .....	8-9
Mounting Holster .....	10
Frequently Asked Questions (FAQs).....	11-13
Limited Product & Connected Equipment Warranty .....	14-16

## Product Specification

### **SEED™ Remote & Holster**



- Remote Range..... 65 ft/20 m
- Remote Frequency ..... 433MHz
- Batteries (not included)..... Size AAA (2)
- Dimensions (L x W x H)..... 4.8 x 1.8 x 0.6 in  
..... 121 x 45 x 15 mm
- FCC ID: YF3MC-SED10R01



## CAUTION



- FOR INDOOR USE. DO NOT USE THIS PRODUCT NEAR WET AREAS SUCH AS SINKS AND NEAR AQUARIUMS.



## FCC Information

- FCC ID: YF3MC-SED10R01
- This device complies with Part 15 of the FCC Rules. Operation is subject to the following two conditions:
  1. This device may not cause harmful interference, and
  2. This device must accept any interference received, including interference that may cause undesired operation.

WARNING: DO NOT CHANGE OR MODIFY THE DEVICE. THIS COULD VOID THE USER'S AUTHORITY TO OPERATE THE DEVICE.

- This equipment has been tested and found to comply with the limits for a Class B digital device, pursuant to Part 15 of the FCC Rules. These limits are designed to provide reasonable protection against harmful interference in a residential installation. This equipment generates, uses, and can radiate radio frequency energy and, if not installed and used in accordance with the instructions, may cause harmful interference to radio communications. However, there is no guarantee that interference will not occur in a particular installation. If this equipment does cause harmful interference to radio or television reception, which can be determined by turning the equipment off and on,

## FCC Information (cont'd)

the user is encouraged to try to correct the interference by one or more of the following measures:

1. Reorient or relocate the receiving antenna.
2. Increase the separation between the equipment and receiver.
3. Connect the equipment into an outlet on a circuit different from that to which the receiver is connected.
4. Consult the dealer or an experienced radio/TV technician for help.

FCC Caution: To assure continued compliance, any changes or modifications not expressly approved by the party responsible for compliance could void the user's authority to operate this equipment. (Example - use only shielded interface cables when connecting to computer or peripheral devices).



## Introduction

Thank you for purchasing the **SEED™ Remote**. This device helps eliminate phantom power consumption by electrical devices which are powered OFF. PLEASE READ THROUGH THIS USER GUIDE CAREFULLY to ensure proper set up and operation of the SEED™ Remote.

### **PLANNING**

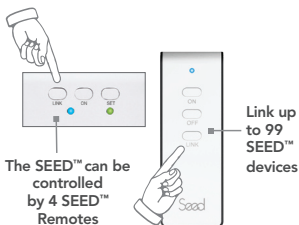
- Make sure that the electrical devices you are planning to use with the **SEED™** are NOT DEVICES WHICH REQUIRE CONTINUOUS POWER. (*i.e. Refrigerators, Clocks, Telephones.*)
- First determine which electrical devices drain the most power while turned OFF. (*i.e. Plasma TVs, Game Consoles, VCR/DVD players, Computers, Laser Printers, Monitors, Audio Systems.*)
- Locate an area for convenient access to mount the remote holster (such as near the entrance to a room or near the bed.)



## Set Up Link

- A. Press the LINK button on the SEED™ device. The indicator light will flash a blue light.
- B. Then press the LINK button on the remote. The indicator light will show a blue light for about a second. When both the flashing blue light on the SEED™ device and the blue light on the remote turns off, the remote is now linked to the SEED™ device.

**NOTE :** It is possible to link the remote to 99 SEED™ devices. Inversely, an individual SEED™ device can be controlled by 4 SEED™ Remotes. Follow the same procedure to link another SEED™ device to the remote.



## Operation

### **POWERING ON THE SEED™ DEVICE**

Before powering on the electrical devices connected to the SEED™, you must POWER ON the SEED™. To POWER ON the SEED™ with the SEED™ Remote, press the ON button on the remote.



## Operation

### **POWERING OFF THE SEED™ DEVICE**

There is only one way to manually power OFF a SEED™ device:

- Press the OFF button for 3 seconds on the remote.

NOTE: The SEED™ device is designed to automatically power OFF 5 minutes after all connected electrical devices have been turned off. Once the SEED™ device is powered OFF, all power consumption is eliminated. THIS DOES NOT APPLY TO THE "ALWAYS ON" OUTLET.



## Mounting the Holster

### **MOUNTING THE SEED REMOTE HOLSTER**

On the back of the remote holster, expose the cover of the adhesive tape and attach vertically to either the wall or furniture. Place the remote holder in a location convenient for you to turn off your devices (i.e. near existing light switches, near entrances, or near the bed.)

## Frequently Asked Questions (FAQs)

### **How does the SEED™ save energy?**

Electrical devices and appliances left plugged into outlets but turned OFF still draw electricity. This is known as “phantom load” or vampire energy consumption. Therefore, your electrical devices and appliances constantly draw and waste valuable energy from the moment you power them OFF till the moment you power them back ON. The SEED™ will passively shut off all power consumption\* to the electrical devices plugged into it 5 minutes after the last device is turned OFF. \*Does not apply to ALWAYS ON outlet.

### **The remote does not work.**

As the battery nears the end of its useful life, the remote range may start to decrease. Remove the battery cover on the back of the remote and replace the two (2) AA batteries.

PLEASE DISPOSE OF THE USED BATTERIES RESPONSIBLY.

### **What is the maximum range of the remote?**

Your remote has a range of up to 65 feet (20m). This range may vary depending on the construction of your home or office. It operates by radio frequency so a direct “line of sight” is not required.

## Frequently Asked Questions (FAQs)

### **Can I link an additional remote to the same SEED™?**

Yes. You can link 4 SEED™ Remotes to a single SEED™.

### **Can I link my remote to more than one SEED™?**

Yes. You can link your SEED™ remote to up to 99 SEED™ devices. You can also link one or multiple remotes to one or multiple SEED™ devices.

### **Why is there is no OFF button on my SEED™?**

The SEED™ operates passively so you do not need to alter your regular behavior or relearn new habits. Just power off your electrical devices or appliances as you normally would and your SEED™ will automatically power OFF 5 minutes after all connected electrical devices or appliances have been powered OFF.

### **Why is there is an OFF button on my SEED™ remote?**

In the event that you want to manually power OFF the electrical devices or appliances connected to your SEED™, you can do so by holding the OFF button on your remote for 3-5 seconds. This is particularly convenient for remote ON/OFF operation for products that do not have a power ON switch (eg. holiday lights) or for products that have a hard ON/OFF switch (eg. lamp).

## Frequently Asked Questions (FAQs)

### **What does “Certified CarbonFree®” mean?**

Your SEED™ is a carbon neutral product. It meets Carbonfund.org’s CarbonFree® Product Certification protocol which requires third-party life cycle assessment of the product’s carbon footprint, and carbon reductions in support of third-party validated renewable energy and reforestation projects. To learn more, visit [www.carbonfund.org/products](http://www.carbonfund.org/products).

### **Who is Carbonfund.org?**

Carbonfund.org is a 501(c)(3) nonprofit organization which supports renewable energy, energy efficiency and reforestation projects globally that reduce carbon dioxide emissions and the threat of climate change. For more information, visit: [www.carbonfund.org](http://www.carbonfund.org).

### **Is the SEED™ RoHS Certified? What does that mean?**

Yes, the SEED™ is RoHS certified. RoHS stands for Restriction of Hazardous Substances. It restricts the use of six hazardous materials (including Lead and Mercury) in the manufacture of various types of electrical and electronic equipment.

## Limited Product Warranty

Intek America, Inc. (the "Manufacturer") warrants to the original purchaser of the SEED™ Remote for one (1) year after the date of purchase, that the SEED™ Remote shall be free of defects in design, assembly, material, or workmanship, and will repair or replace, at its option, any defective SEED™ Remote free of charge. This is a Limited Warranty subject to the limitations and exclusions set forth herein.

The Manufacturer reserves the right to review the damaged SEED™ Remote. All costs of shipping the SEED™ Remote and the damaged equipment to the Manufacturer for inspection shall be borne solely by the purchaser. The Manufacturer reserves the right to negotiate the cost of repairs. If the Manufacturer determines, in its sole discretion, that it is impractical to ship the damaged equipment to the Manufacturer, the Manufacturer may designate, in its sole discretion, an equipment repair facility to inspect and estimate the cost to repair such equipment. The cost of shipping the equipment to and from such repair facility and of such estimate shall be borne solely by the purchaser. Damaged equipment must remain available for inspection until the claim is finalized. Whenever claims are settled, the Manufacturer reserves the right to be subrogated under any existing insurance policies the claimant may have.

All above warranties contained herein are null and void if:

- The SEED™ Remote in use during the INCIDENT is not provided to the Manufacturer for inspection upon request at the sole expense of the purchaser,
- The Manufacturer determines that the SEED™ Remote has been opened, improperly installed, altered in any way or tampered with,

THIS IS THE SOLE WARRANTY OF THE



## Limited Product Warranty

(cont'd)

MANUFACTURER. THERE ARE NO OTHER WARRANTIES, EXPRESS OR IMPLIED, EXCEPT AS REQUIRED BY LAW. IMPLIED WARRANTIES REQUIRED BY LAW INCLUDE THE IMPLIED WARRANTY OF CONDITION OF QUALITY, MERCHANTABILITY AND FITNESS FOR A PARTICULAR PURPOSE, AND SUCH IMPLIED WARRANTIES, IF ANY, ARE LIMITED IN DURATION TO THE TERM OF THIS WARRANTY.

SOME STATES DO NOT ALLOW LIMITATIONS ON HOW LONG AN IMPLIED WARRANTY LASTS, SO THE ABOVE LIMITATIONS MAY NOT APPLY.

In no event shall the Manufacturer be liable for incidental, special, direct, indirect, consequential or multiple damages such as, but not limited to, lost business or profits arising out of the sale or use of any SEED™ Remote, even if advised of the possibility of such damages. This warranty gives you specific legal rights, and you may also have other rights, which may vary from state to state. Some states do not allow the exclusion or limitation of incidental or consequential damage, so the above limitations may not apply to you.

This warranty is valid only for the original purchaser of the product. All damage claims against the product must be made within 15 days from the date of the INCIDENT and must be accompanied by a receipt for the damaged equipment of the warranty is void.

Warranty is valid in the USA, Canada, Puerto Rico, and Bermuda.

To file a claim against the Manufacturer, you

## Limited Product Warranty

(cont'd)

must take the following steps:

- Contact:  
INTEK America, Inc.  
18528 S. Dominguez Hills Drive  
Rancho Dominguez, CA 90220  
Attn: Customer Support,  
or call 866-377-4771.

All claims must be filed within 15 days from the date of the INCIDENT and must be accompanied by a receipt for the damaged equipment or the warranty is void.

- Be prepared to provide the following information:
  1. The SEED™ product name
  2. The date of the INCIDENT.
  3. Where you purchased the SEED™ Remote.
  4. When you purchased the SEED™ Remote.
  5. Copy of the original receipt.





Customer Support:  
866-377-4771  
[support@goecolife.com](mailto:support@goecolife.com)

[GoECOlife.com](http://GoECOlife.com)

Copyright © 2010 INTEK America, Inc.  
Rancho Dominguez, CA 90220.  
ALL RIGHTS RESERVED.