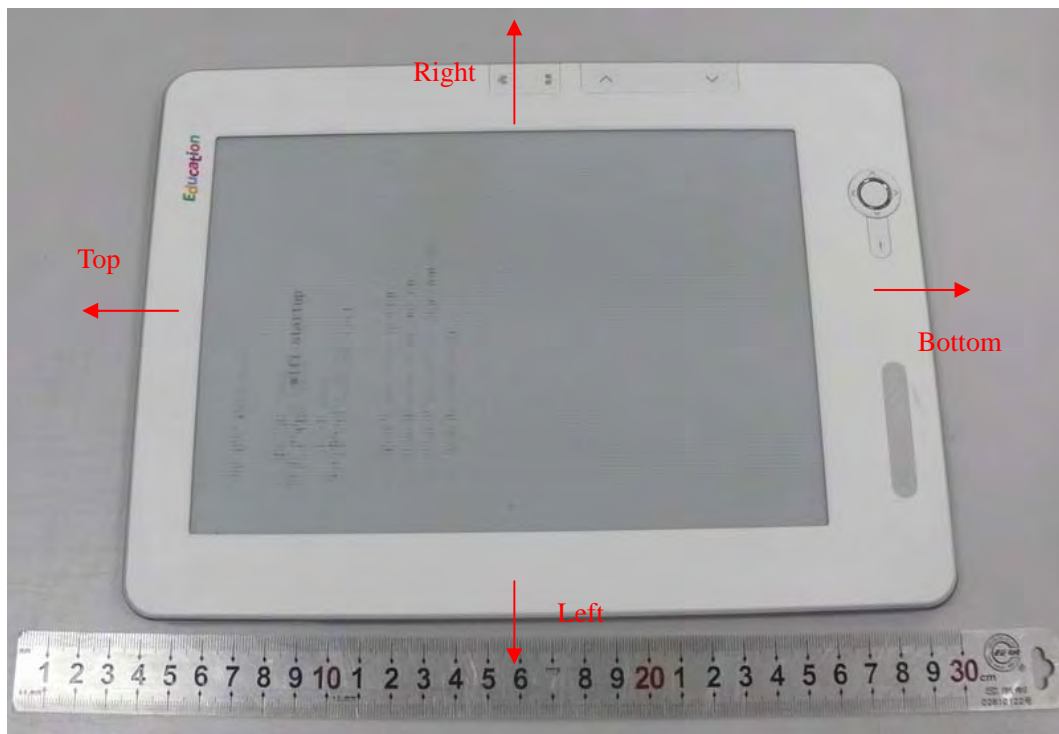


ANNEX G: The EUT Appearances



3-a: Front side

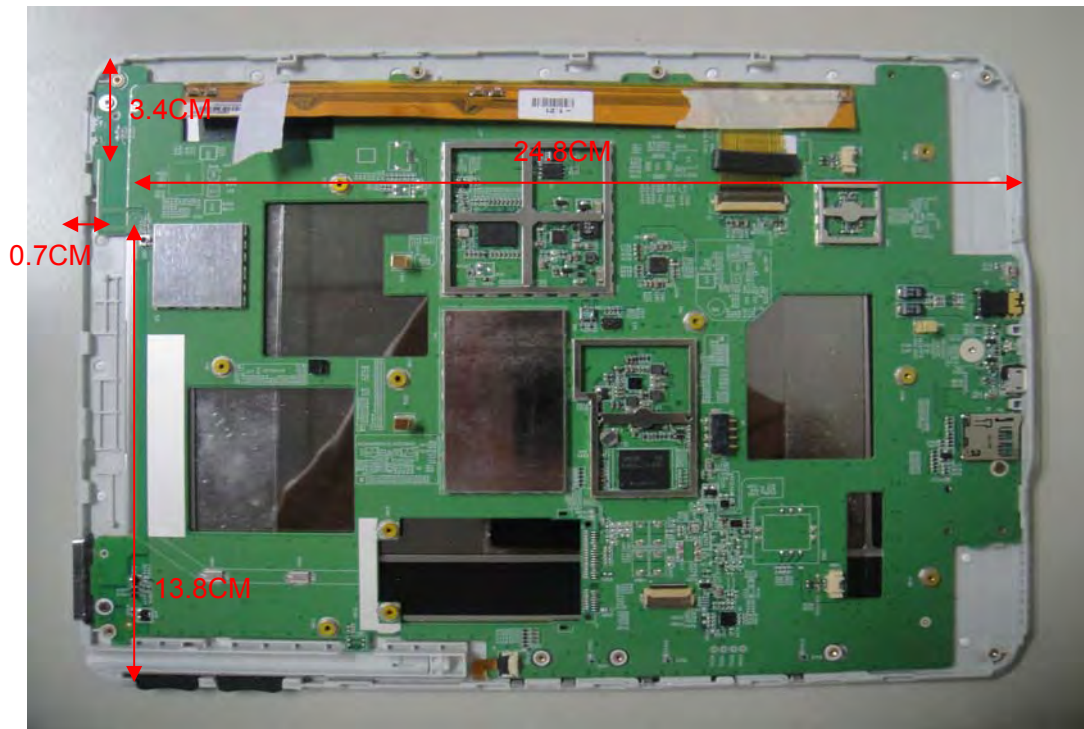


3-b: Back side

TA Technology (Shanghai) Co., Ltd.
Test Report

Report No. RZA2010-1483FCC

Page 61 of 63



3-c: Back view

Picture 3: Constituents of the EUT

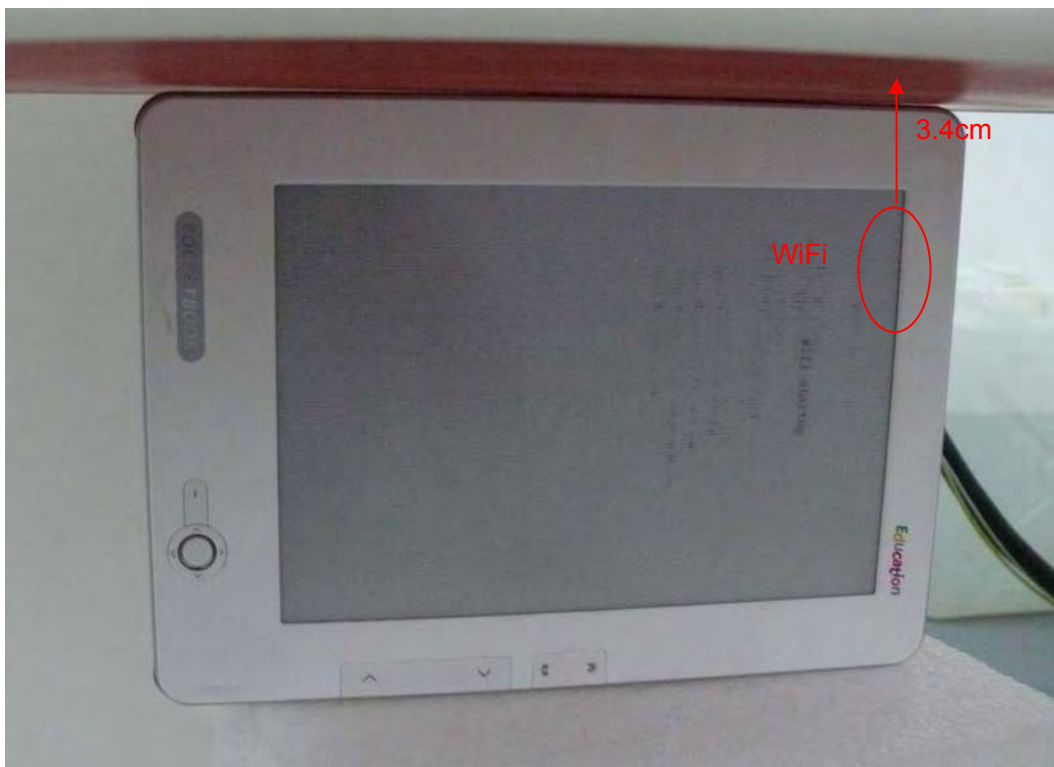


Picture 4: Test position 1

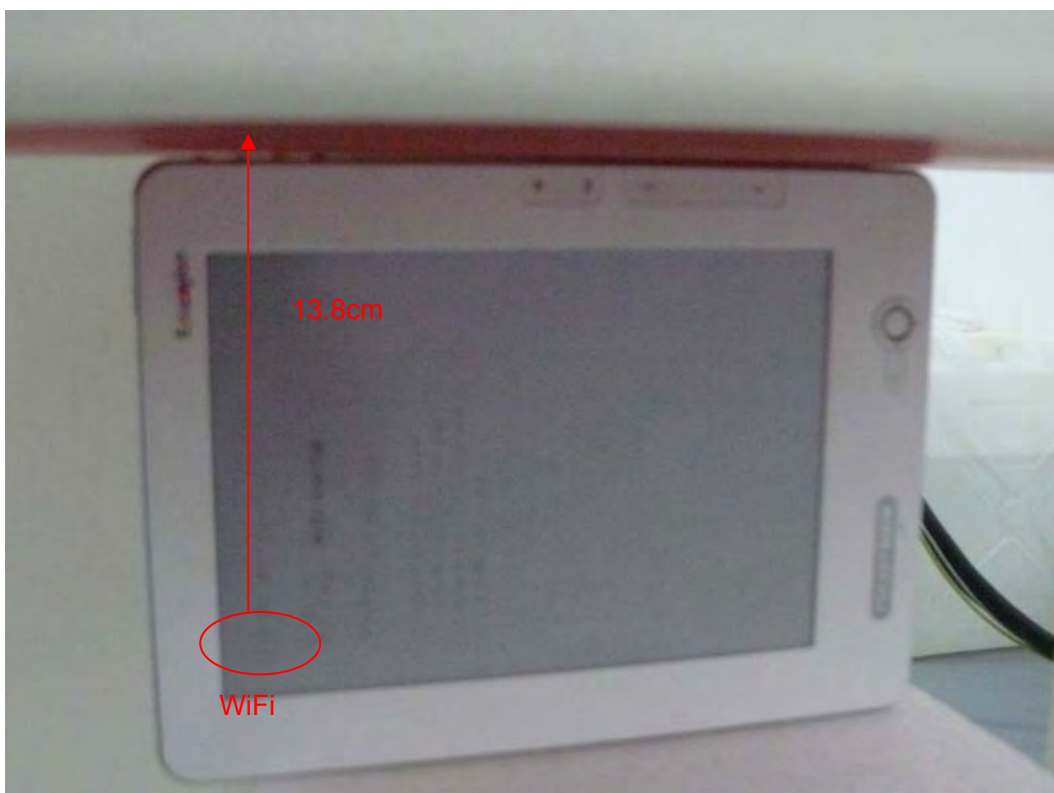
TA Technology (Shanghai) Co., Ltd.
Test Report

Report No. RZA2010-1483FCC

Page 62 of 63

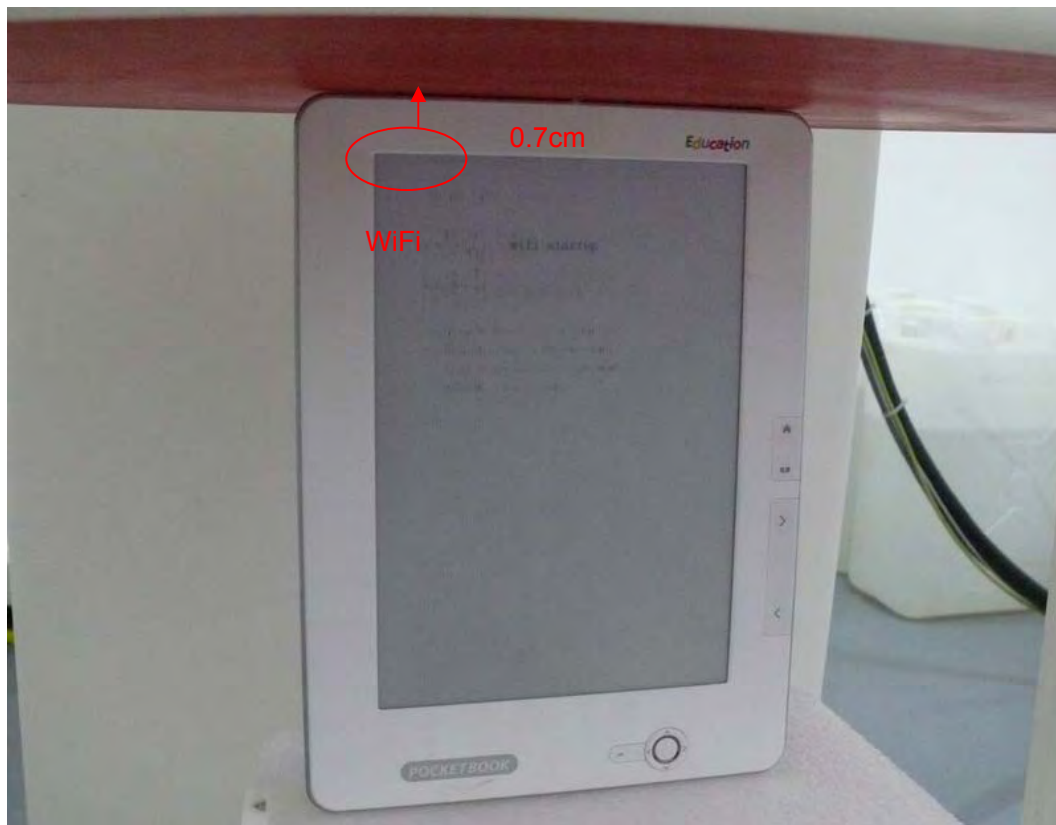


Picture 5: Test position 2

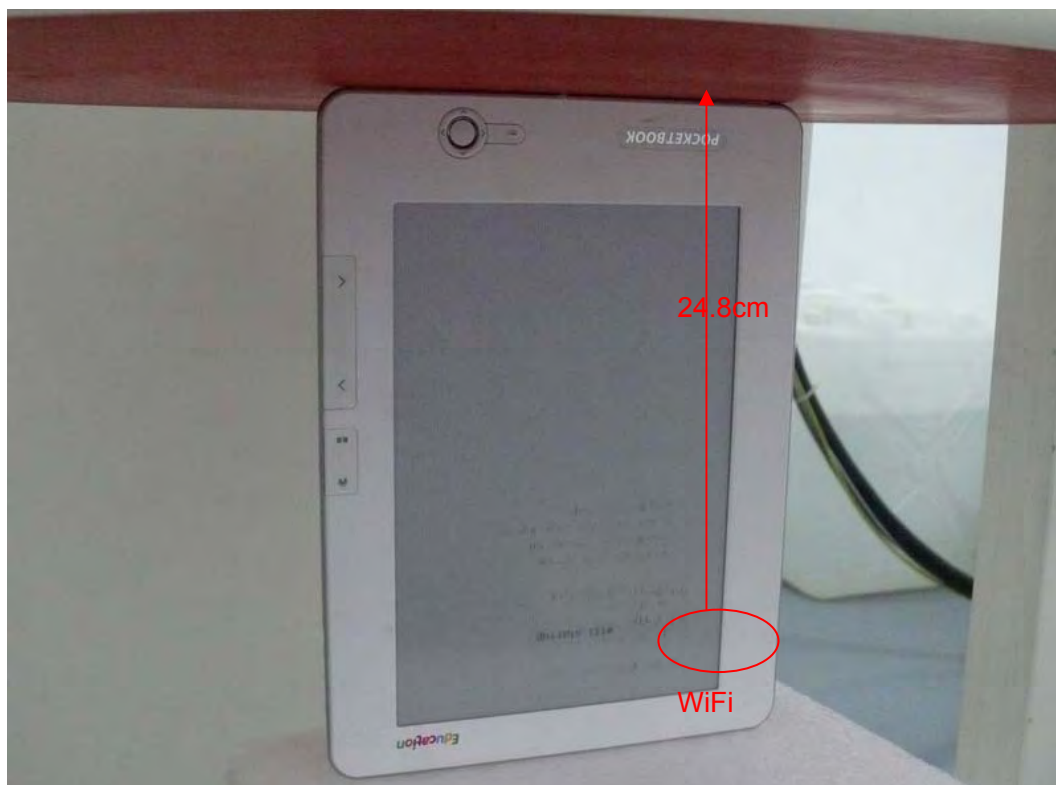


Picture 6: Test position 3

(This is not the most conservative antenna – to – user distance at edge mode. According to KDB 447498 4) ii) (2) –SAR is required only the edge with the most conservative exposure conditions, No SAR)



Picture 7: Test position 4



Picture 8: Test position 5

(This is not the most conservative antenna – to – user distance at edge mode. According to KDB 447498 4) ii) (2) –SAR is required only the edge with the most conservative exposure conditions, No SAR)