



GEELY GIDS
Wireless Automotive Diagnostic System
USER MANUAL

Version 1.0

Statement

Copyright © 2009 by SPX mechanical and electrical products (Suzhou) co., ltd (short for "SPX"). All rights reserved. No part of this publication can be reproduced, stored in a retrieval system, or transmitted in any form or by any means, electronic, mechanical, photocopying, recording or otherwise, without the prior written permission of SPX. The information contained herein is designed only for the use of this unit. SPX is not responsible for any use of this information as applied to other units.

Neither SPX nor its affiliates shall be liable to the purchaser of this unit or third parties for damages, losses, costs, or expenses incurred by purchaser or third parties as a result of: accident, misuse, or abuse of this unit, or unauthorized modifications, repairs, or alterations to this unit, or failure to strictly comply with SPX operating and maintenance instructions.

SPX shall not be liable for any damages or problems arising from the use of any options or any consumable products other than those designated as Original SPX Products or SPX Approved Products by SPX.

General Notice: Other product names used herein are for identification purposes only and may be trademarks of their respective owners. SPX disclaims any and all rights in those marks.

The GIDS can only be operated by qualified technicians.

Trade mark

SPX is a registered trademark of SPX mechanical and electrical products (Suzhou) co., ltd (short for SPX) in China and other countries. All other SPX trademarks, service marks, domain names, logos, and company names referred to in this manual are either trademarks, registered trademarks, service marks, domain names, logos, company names of or are otherwise the property of SPX or its affiliates. In countries where any of the SPX trademarks, service marks, domain names, logos and company names is not registered, SPX claims other rights associated with unregistered trademarks, service marks, domain names, logos, and company names. Other products or company names referred in this manual may be trademarks of their respective owners. You may not use any trademark, service mark, domain name, logo, or company name of SPX or any third party without permission from the owner of the applicable trademark, service mark, domain name, logo, or company name.

GIDS User Manual instructions

- Please read this user manual carefully before using the scanner.
- The current user manual is based on the current features and functions available. Any new added features and functions of GIDS will be added to the user manual in the future. Updated versions of user manual will be available to download at SPX website (<http://www.servicesolutions.com.cn>).
- When reading the manual, please pay special attention to the words “Note”, “Caution” and “Warn”. Read them carefully for appropriate operation.

GIDS main unit maintenance:

- Avoid shaking or dismantling as it may damage the internal components
- Do not use hard or sharp objects to touch it; do not use excessive force; do not expose the screen to strong sunlight for a long period
- Caution: keep it away from water, moisture, high temperature or very low temperature;
- Keep the main unit away from strong magnetic fields.



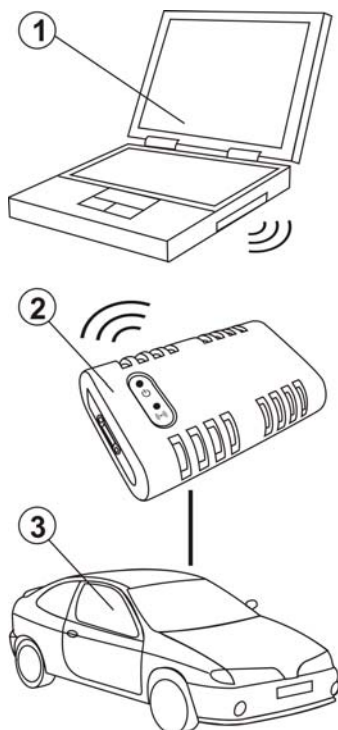
Operation Instructions

- For safe operation please follow the instructions below;
- Keep the scanner away from heat or fumes when using it;
- If the vehicle battery contains acid, Please keep your hands and skin or fire sources away from the battery during test
- Exhaust gas of vehicle contains harmful chemicals, please ensure adequate ventilation.
- Do not touch the cooling system components or exhaust manifolds when engine is running to high temperature;
- Make sure the car is securely parked and the selector is at P or N position to prevent the vehicle from moving when engine starts;
- Make sure the diagnostic link connector (DLC) is OK before starting the test; otherwise the scanner may be damaged. SPX suggests you test the Power/Earth with multi-meter first.
- Do not switch off the power or unplug the connectors during testing, otherwise you may damage the ECU or scanner;

CONTENT

1. INTRODUCTION	1
1.1 Function and Feature	1
1.2 Layout of Main Unit	1
1.3 Technical Parameters	2
1.4 Configuration	2
2. OPERATION	5
2.1 Software installation & cable connection.....	5
2.1.1 Diagnostic software installation	5
2.1.2 Cable connection	7
2.2 Interface Instruction.....	8
2.2.1 Starting Interface	8
2.2.2 Diagnostic Program	8
2.2.3 System Setting	9
2.2.3.2 Version Information	9
2.2.3.3 Display Mode	9
2.2.3.4 Unit Switch.....	9
2.2.4 Self check	10
2.2.6 Homepage.....	10
2.3 GIDS Software Register	11
2.4 Software update	12
2.4.1 Upgrading Instructions	12
3. TEST PROCEDURE	15

1. Introduction

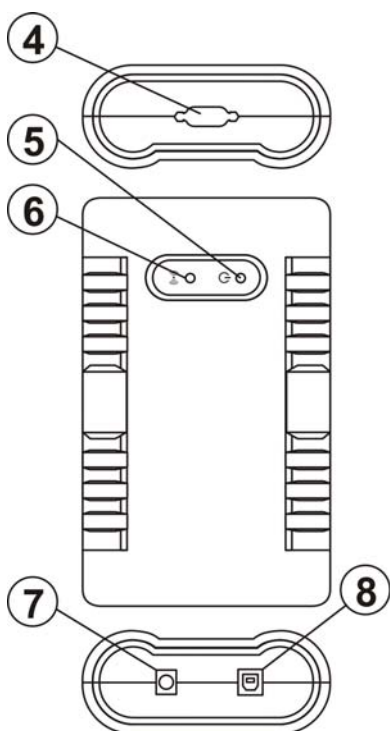


1.1 Function and Feature

- OE level coverage for Geely cars
- Supports Multi-language
- Multi-functions
- Wireless diagnosis operated on PC
- CAN-BUS with high/low speed
- One OBDII connector for all CAN bus systems
- Continuous software update online
- 6-layer electronic circuit board
- Self-check function

1.2 Layout of Main Unit

The main unit layout is as shown in left picture.



- ① PC/laptop
- ② GIDS main unit
- ③ Vehicle (ECU)
- ④ Main cable port
- ⑤ Power indicator
- ⑥ Wireless operation indicator
- ⑦ Power supply (+12V) port
- ⑧ USB port

1.3 Technical Parameters


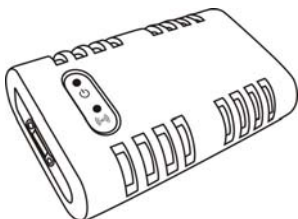

PC configuration

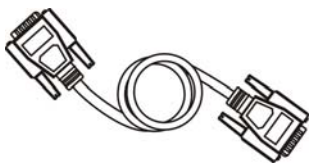
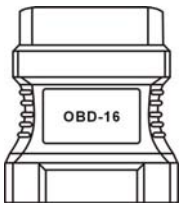
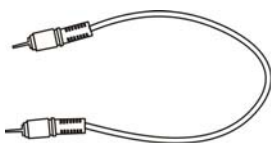


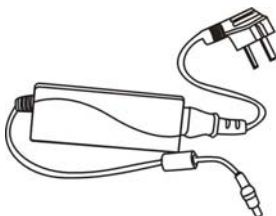
CPU: Pentium 4 (or Celeron R series) or above

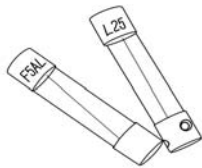
Memory: Minimum 1GB

- Operating system: WINDOWS XP SP2 or above
Power supply: DC 12V, AC 110~250V 50/60Hz;
- Power: DC 9~15V
- Wireless working frequency: 2400 MHz-2483.5 MHz. (ISM-Band)
- Wireless communication distance: around 20~100 Meters (depending on environment)
- Wireless transfer speed: max. 11Kbytes/s
- Memory temperature: -20~70°C
- Working temperature: -10~60°C
- Humidity: <90%

1.4 Configuration

Picture	Item	Description
	Name: PC/laptop Quantity: 1	Function: Used for wireless diagnosis and display
	Name: GIDS main unit Quantity: 1	Function: Data transfer connecting with vehicle
	Name: Installation CD Quantity: 1	Function: Used to install operating software in PC

Picture	Item	Description
	Name: Main Cable Quantity: 1	Function: Connect the main unit and connectors with vehicle
	Name: OBD-16 connector Quantity: 1	Function: Used for testing all vehicles compliant with OBDII, EOBD and J1962 with 16-pin DLC
	Name: Jumper Quantity: 1	Function: Short circuit test for flash code reading
	Name: Battery power cable Quantity: 1	Function: Gains power supply from battery
	Name: Cigarette lighter power cable Quantity: 1	Function: Gains power supply via cigarette lighter on car
	Name: DC adaptor Quantity: 1	Function: Used to connect with power supply of 12V DC voltage

Picture	Item	Description
	Fuse 5A 30*6	Function: Spare parts
	Fuse 5A 20*5	Function: Spare parts

NOTE: Configuration varies as per software package. For complete configuration, please refer to the relevant shipping list.

2.Operation



2.1 Software installation & cable connection

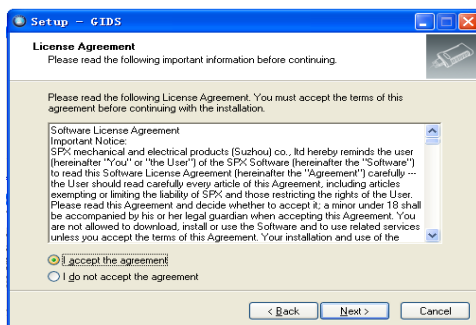
2.1.1 Diagnostic software installation

Steps for installation of GIDS diagnostic software:

(1). Put the GIDS CD into CD driver in PC.

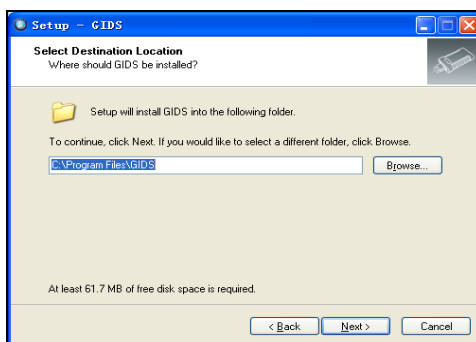
Installation information will popup.

Click on **[Next]** to continue.



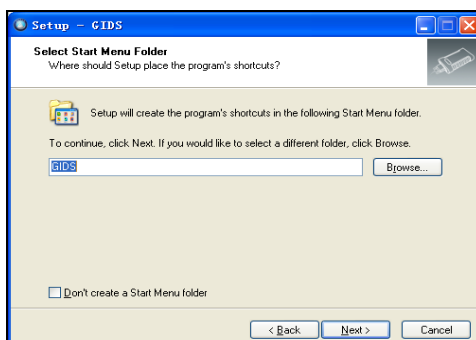
(2). In GIDS installation interface, click on

[I agree this license] and then **[Next]**.



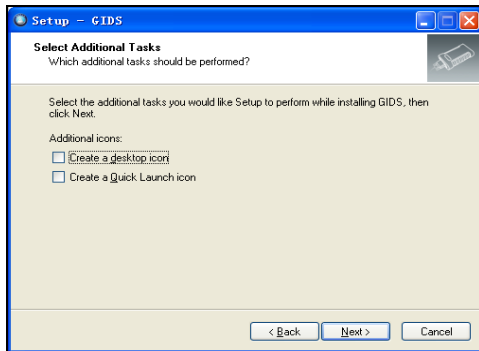
(3). Choose the path for installation. The default path is C:\Program Files\GIDS.

To continue, click on **[Next]**.

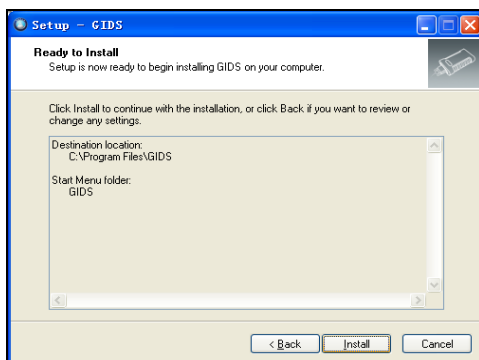


(4). Choose select start menu folder.

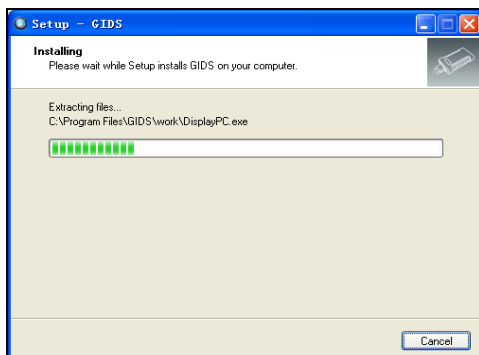
To continue, click on **[Next]**.



(5). Select Additional Tasks.
To continue, click on **[Next]**.



(6). Ready to Install.
To continue, click on **[Next]**.



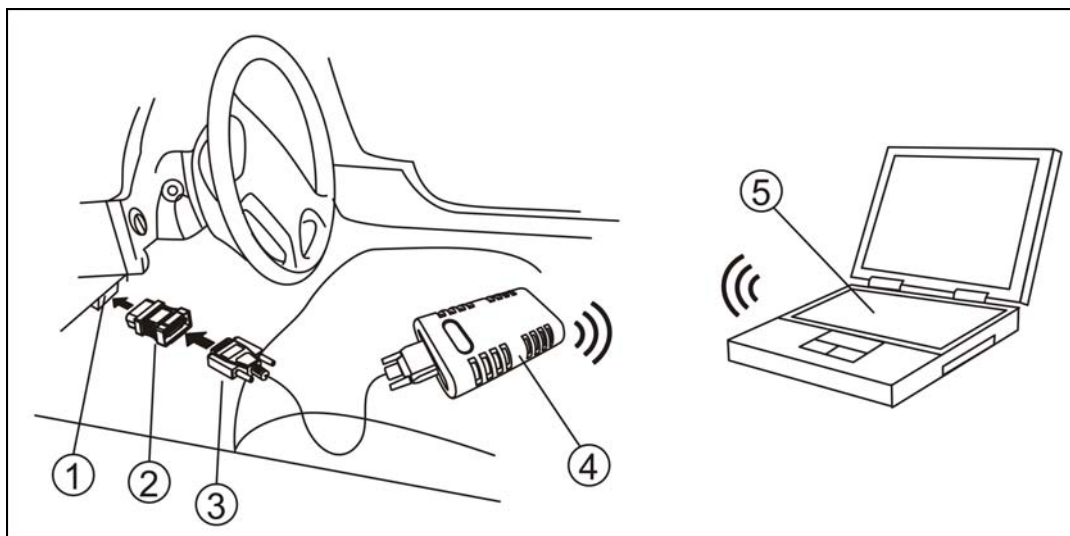
(7). Installing.
To continue, click on **[Next]**.



(8). Click on **[Finish]** to complete Installation.

2.1.2 Cable connection

Please check the following chart for connection instruction:



- 1. DLC
- 2. Connector
- 3. Main cable
- 4. Main unit of GIDS
- 5. PC/laptop

Diagnostic connection:

- ① Check the position of DLC and see if it is OK.
- ② Enable PC wireless switch.
- ③ Select corresponding connectors for car make and DLC.
- ④ Connect one end of main cable to the main unit and the other end to the connector.
- ⑤ Connect the diagnostic connector with vehicle DLC after connecting with main cable.
- ⑥ Make sure the indicator of GIDS power is on and wireless working indicator is flashing. If power is not on and working indicator is not flashing, please make sure the DLC has power supply. If it has no power, please connect the vehicle with GIDS power port (+12V) with a cigarette lighter power cable.
- ⑦ When power indicator of GIDS main unit is on and wireless working indicator is flashing. Cable connection is finished.

2.2 Interface Instruction



2.2.1 Starting Interface

The interface shown on the left picture will appear on the screen after the GIDS software is run on PC.



2.2.2 Diagnostic Program

In the diagnostic interface you can select vehicle makes including: Geely, Emgrand, Gleagle, Londontaxi.

2.2.3 System Setting

Setting	
Demo	
Country	China
Area	Shanghai
Dealer Name	Geely 4S-1
Dealer address	No.123,HuaShang Road
Dealer ID	G123456
Tel	021-68888888
Fax	021-68888888
Mail code	230000
Email	abc@spk.com

Download	
working language	English
Unit switch	the metric system
Software version	1.280000
Hardware version	0001.2000
Release date	20090507
VCI ID	P30001020
UI style	Geely Blue
Vehicle selection style	By Brand
Display mode	Full screen

Self-Check OK Cancel

Click on the button [Option] to enter settings for language, Compulsive download MCU software and DEMO selection.

2.2.3.1 Language Setting

GIDS supports Multilanguage. Choose any language needed under **[working language]** and press **[OK]** to finish language setting.

2.2.3.2 Download

If you choose this option, it will download the program again every time when you choose a car for testing in order to insure the success of test.

2.2.3.2 Version Information

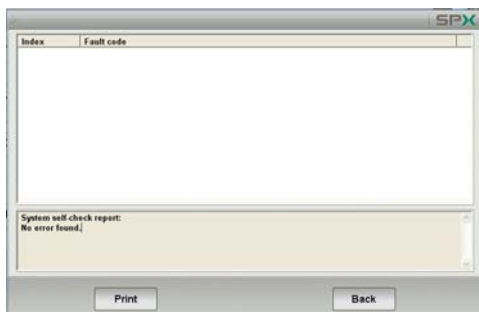
Show the version information of Hardware, Software, Serial number, Release date, etc

2.2.3.3 Display Mode

Include two mode: Full Screen, Window Screen.

2.2.3.4 Unit Switch

Include two mode: Metric, British.



2.2.4 Self check

This is for hardware checking. Click on the button **[Self-check]** in **[Option]** and any hardware faults will be displayed. Please contact local distributor if a hardware problem is reported.

If there are no hardware errors, the checking result will be like the left photo.

Note: The main cable should be disconnected when self checking. And GIDS main unit is connected with power supply.



2.2.6 Homepage

Due to certain reasons, the operating interface may freeze up. You could click on the button **[Home]** to exit and continue testing.

2.3 GIDS Software Register



Fig 1-1 Register interface

If GIDS software is unregistered, then user only use DEMO mode and can not communicate with vehicles. GIDS software can be registered step by step:

- 1). Make PC to connect to internet with cable.
- 2). Connect VCI and PC by wireless.
- 3). Run GIDS software(Fig1-1).

User register		SPX
First name	Last name	
Company name	City	
Country	Tel	
State/Province	Mob	
Fax	Email	
Street No		
Mail code		
Dealer ID		

Fig 1-2 User information interface

- 3). Press “Register” button. And show a user information screen(Fig1-2).
- 4). Input user information correctly and press “Activate” button.



Fig 1-3 Register success interface

- 5). GIDS software rerun automatically. You can see the interface shown in Fig1-3, “Register” Button is unavailable. GIDS software was registered successfully.

2.4 Software update

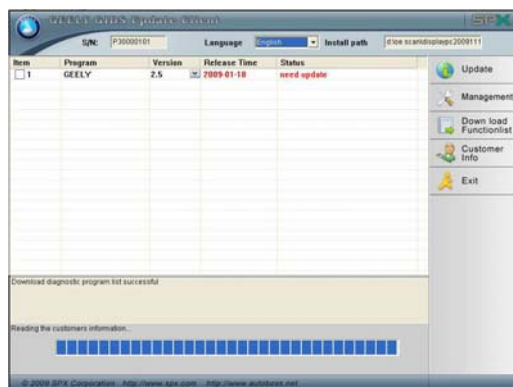


Fig 2-1 update client starting interface

Fig2-2 Input customer info interface

2.4.1 Upgrading Instructions

2.4.1.1 Run GIDS update client program

Double click to run the “GIDSCClient.exe” program under the folder named “tools” in the CD program. You will go to update interface as shown in Fig 2-1.

2.4.2.1 Input Customer Information

You must fill in your personal information when you first login to GIDS update client; otherwise you will not be able to download the diagnostic program.

Operation instruction:

Click on the button **[Customer info]** after login succeeds. You can see the interface shown in Fig2-2. Input your information in relevant space and click **[OK]** to save the information.

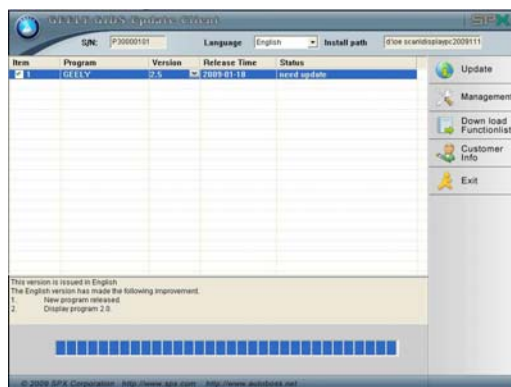


Fig.2-3 Download interface

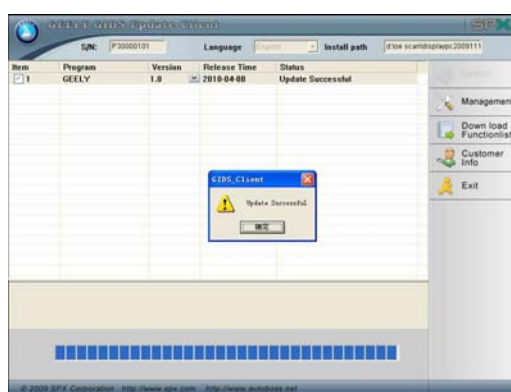


Fig.2-4 Download interface

2.4.3.1 Software Download

After user information is saved, you can download the program needed.

Operation instruction:

- (1) Choose the language version. The default path is "C:\Program Files\GIDS\work\".
- (2) Tick the small box before the relevant program as shown in Fig.2-3;
- (3) Click on the button **[Update]** in right column to enter update status. Programs that are not downloaded are in black. If download succeeds, they will be highlighted in blue. Failed downloads are highlighted in red.
- (4) The programs will be downloaded to your PC hard drive and updated automatically.

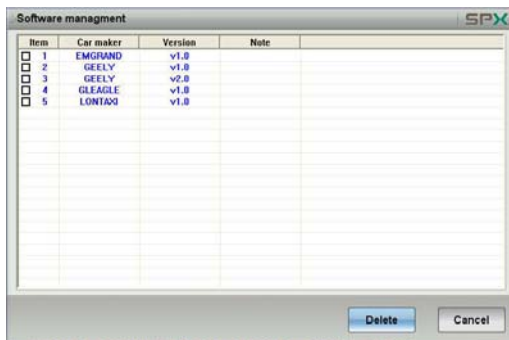


Fig.2-5 software installation interface

2.4.4.1 Software Management

You can delete old versions of software on the download list by entering software management.

Operating instruction:

Click on the button **[Management]** to enter the interface shown in Fig. 2-10. Select the software not needed and click on **[Delete]**. The selected software will be uninstalled automatically.

2.4.5.1 Exit

After finishing all of the steps, click on **[Exit]** to exit from the update client.

3.Test Procedure

1. Install the Geely application software of GIDSSetup.exe
2. Connect the vehicle and the GIDS VCI。
3. Run the installed software on PC:



For example: Emgrand--→EC715--→ Manual Choose→EMS--→Engine

1. Double click the installed Geely application software, the picture is below.



Click the icon F3 Option, the picture is below. We can make some setting. For example, the switch of Language, adjust of the color of GUI, the automatic conversion of Metric and Inch, download automotive communications software, self-test.

Setting

☐ Demo ☐ Download

Country	China	working language	English
Area	ShangHai	Unit switch	the British system
Dealer Name	Geely 4S-1	Software version	1.280000
Dealer address	No.123,HuaShang Road	Hardware version	0001.2000
Dealer ID	G123456	Release date	2009/05/07
Tel	021-68888888	VCI ID	P30001020
Fax	021-68888886	UI style	Geely Blue
Mail code	230000	Vehicle selection style	By Brand
Email	abc@spx.com	Display mode	Full screen

Self-Check OK Cancel

If we select the display of Chinese language, the picture in below.

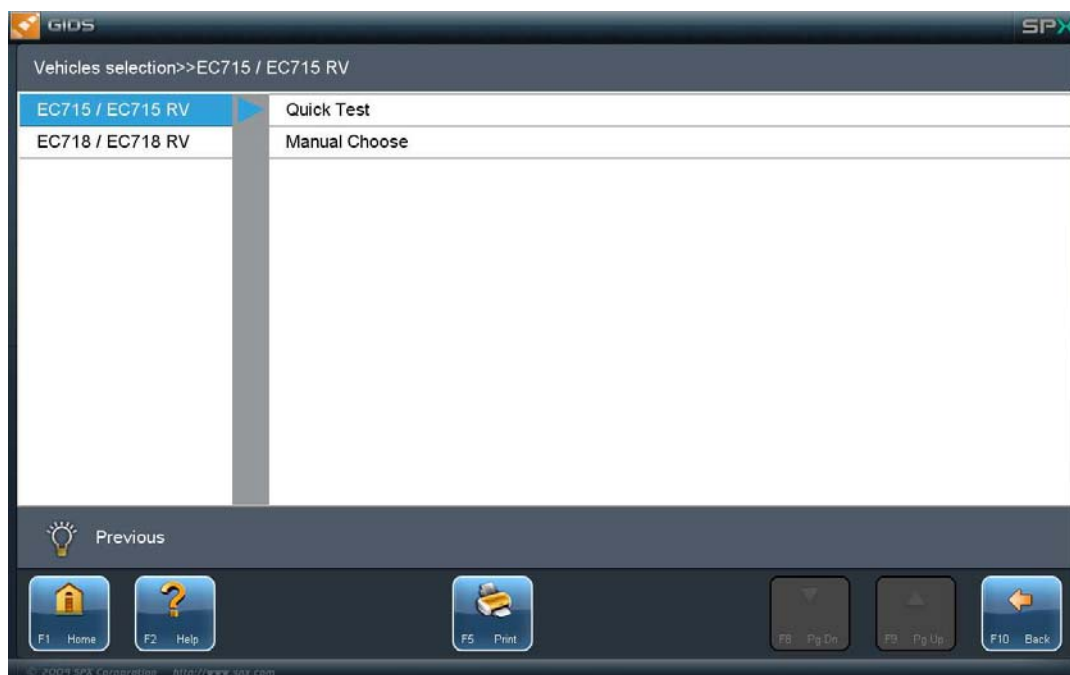


When the color of GUI changed from Geely blue to Holand orange, the picture is below.

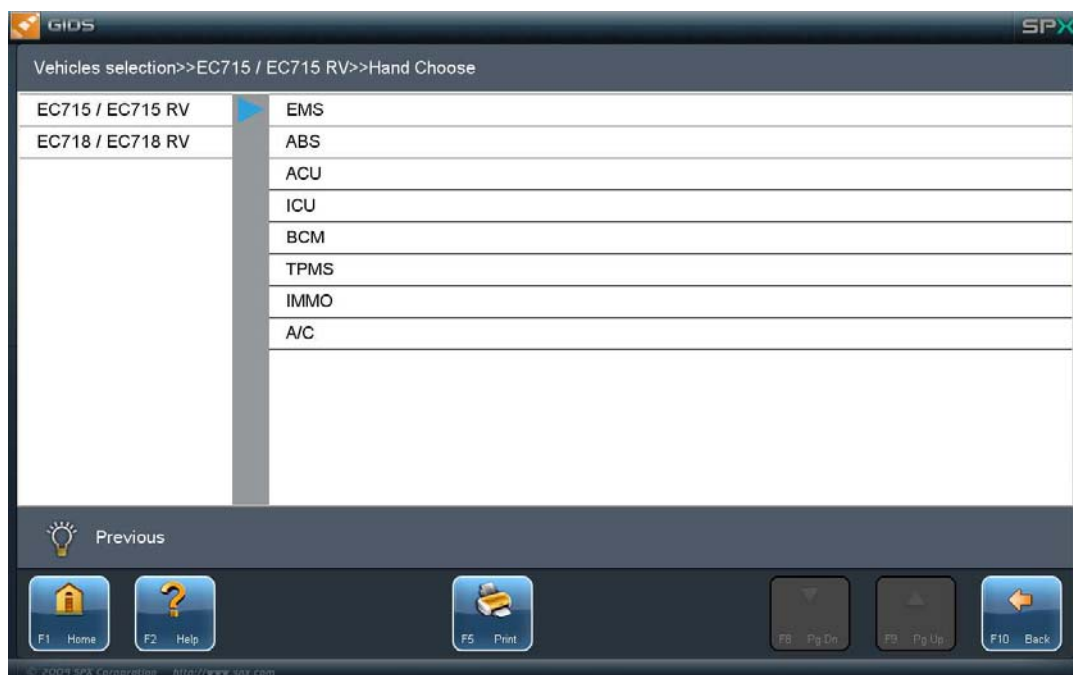


The Metric system unit is the universal standard, the Inch unit is used in Europe. In default, the GIDS use Metric system unit.

2. When the setting is finished, click "Emgrand" icon, enter the following interface: If the "demo " checked, then the software into the demo mode; If the "demo " is not checked, enter the vehicle test mode.



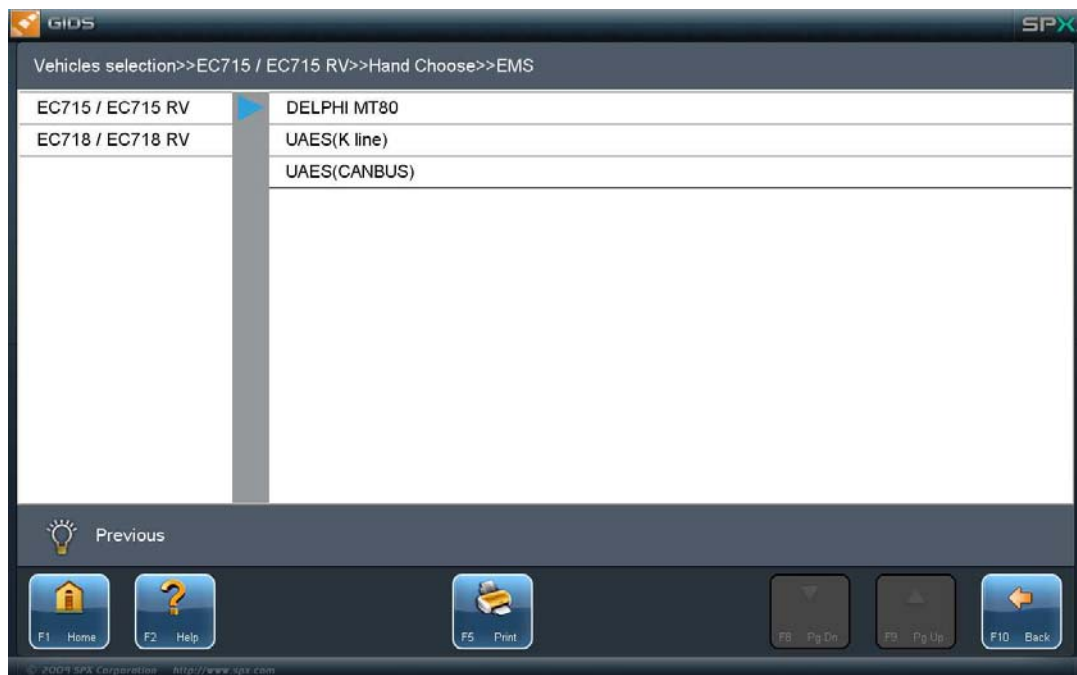
3. Press “EC715/EC715 RV” and “Manual Choose”, then enter the following interface.



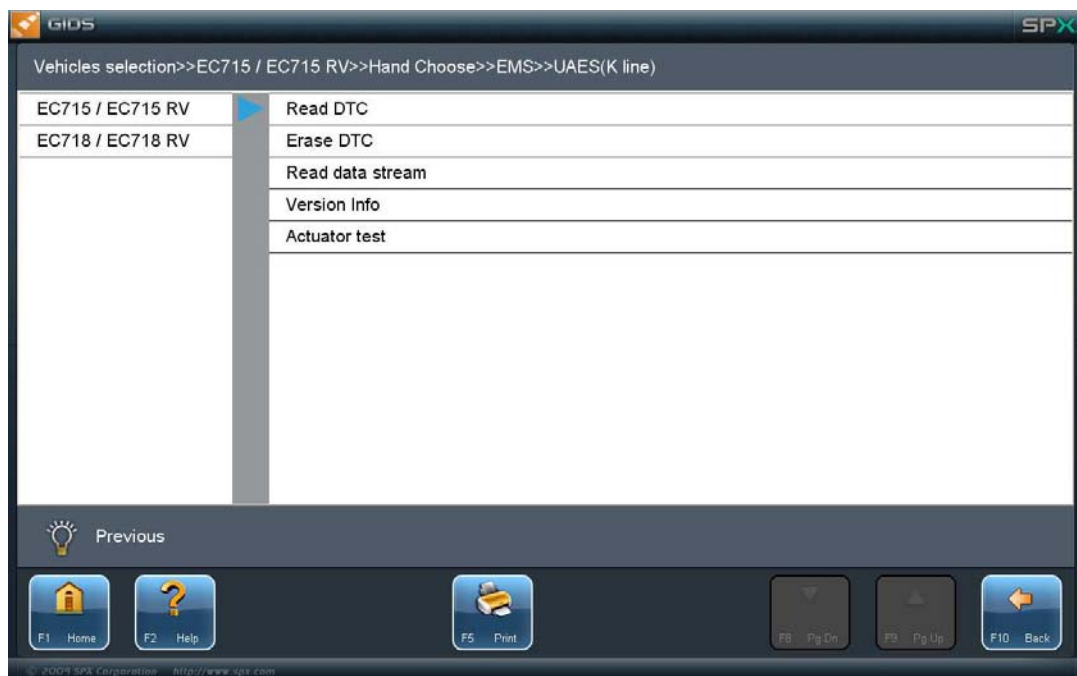
4. if Press “Quick Test”, then enter the following interface.



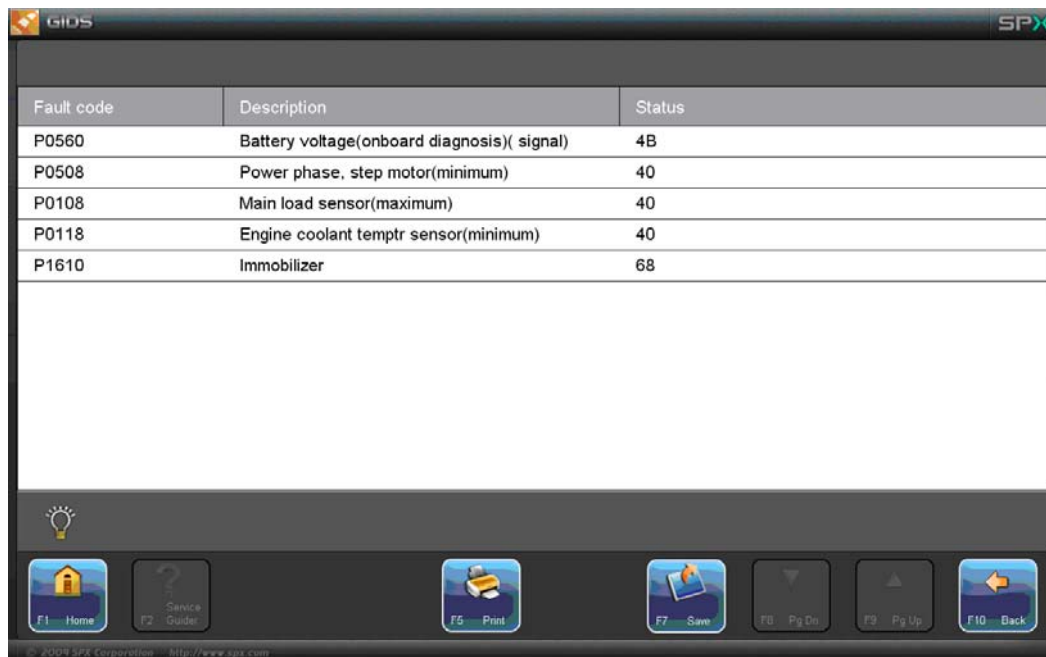
5. Click the button EMS, enter the following interface.



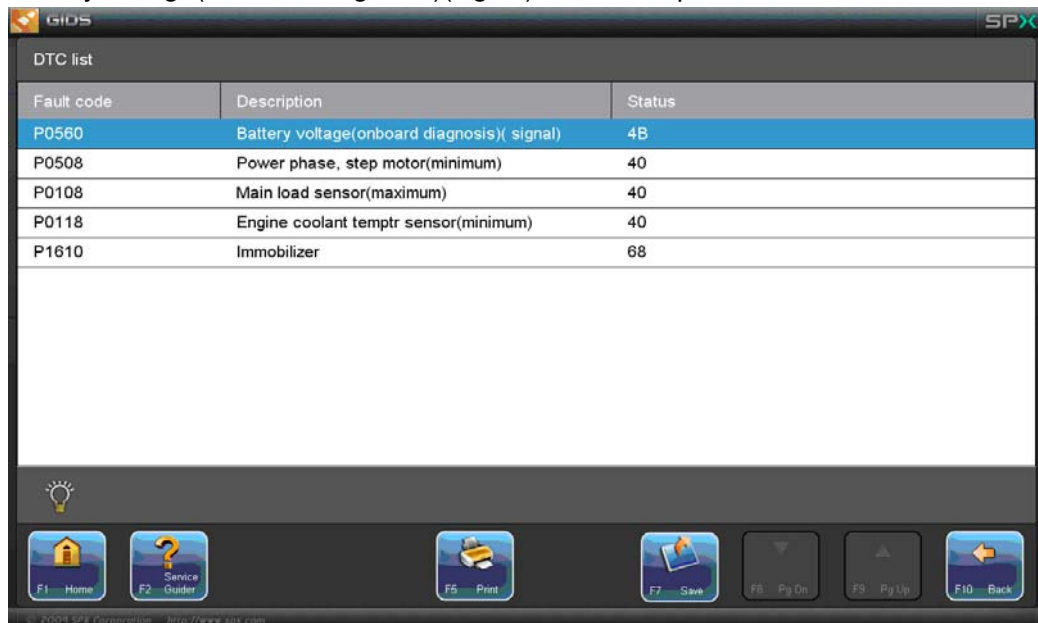
6. Press "UAES(K Line)".



7. Click the button Read DTC, We will see the picture below.



8. Click the item "P0560 Battery voltage(onboard diagnosis)(signal) 4B", then the DTC is highlighted, the "F2 Service Guider" button will be lit, here click on "P0560 Battery voltage(onboard diagnosis)(signal) 4B ", the picture is below.



9. Click the "F2 Service Guider" button, you can see the corresponding fault code P0560 help to guide the maintenance, see below.



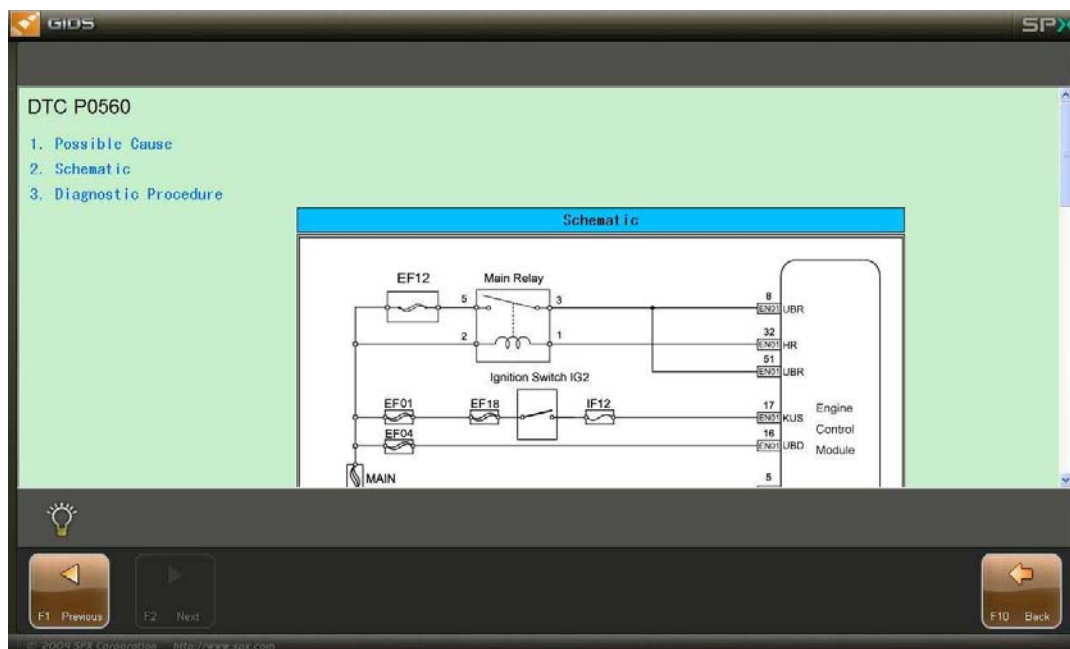
Associated with the description of the circuit description: Tips and the diagnosis-related DTC circuit information

Possible Cause: the possible reasons for the DTC

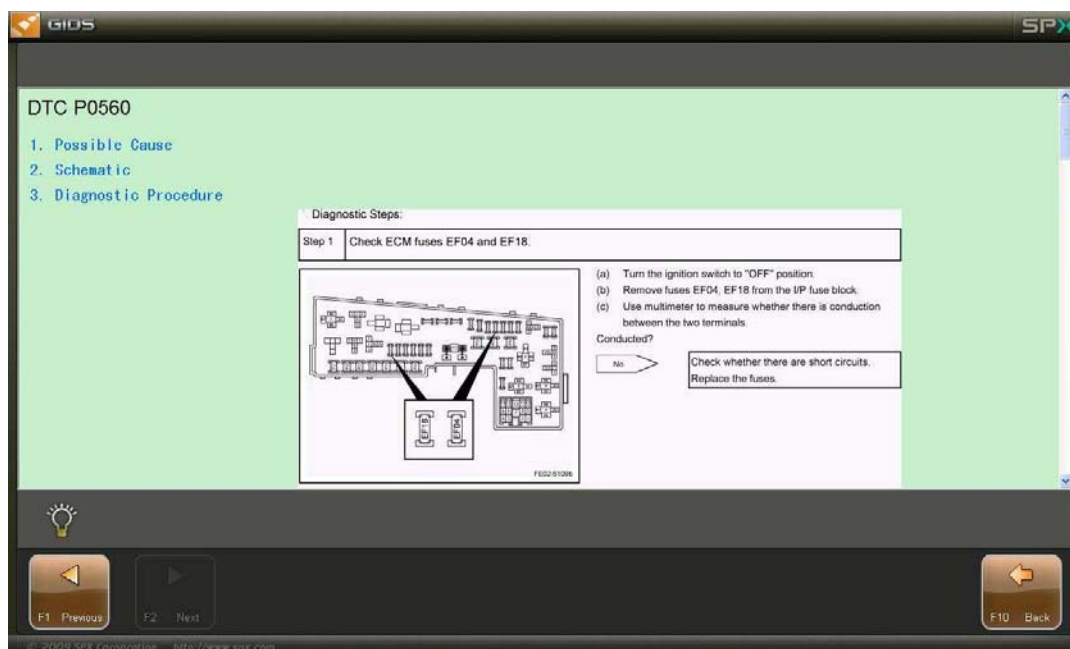
Diagnostic Procedure: Follow the steps to generate tips on how to determine the reasons for the DTC

Schematic: Tip of the fault produced DTC terminal parts of the plug or the location where we can find the fault technician position in time

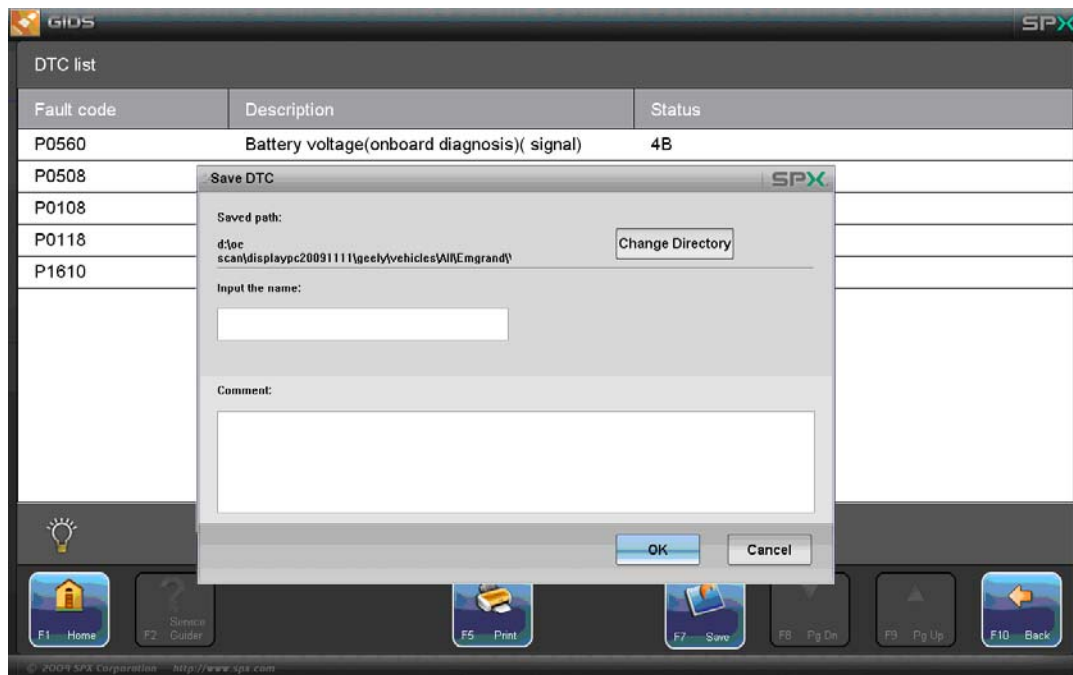
10. Click on the appropriate help guide items, you can view the corresponding help information. Such as the Click "2. Schematic", the help information following figure.



11. Such as click "3. Diagnostic Procedure", enter the following picture.



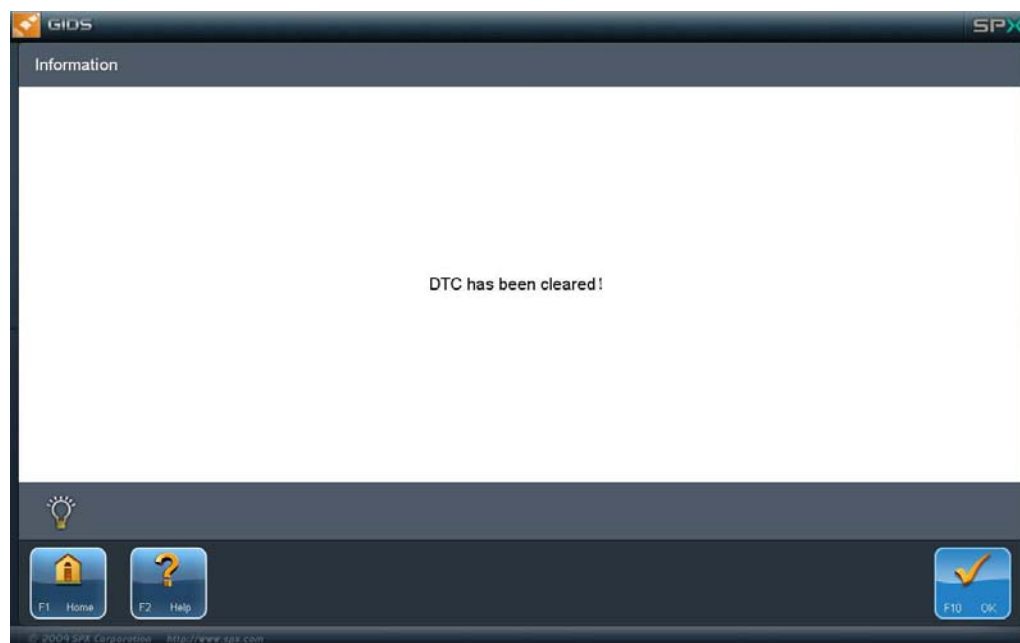
12. Trouble code information is also available by clicking on the "F5 Print" button to print out or "F7 Save" button to export to the local.



13. Click the item "Erase DTC". The tip information occur as follow.



Click the button "F10 Yes".

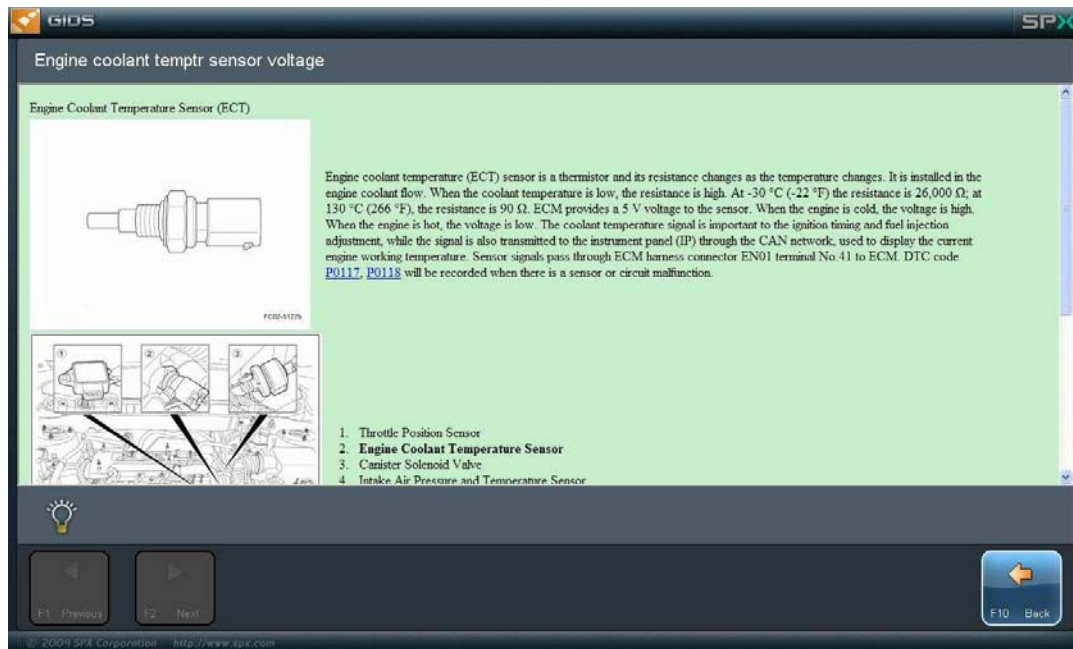


14. Click the item "Read data stream". Enter the follow picture.



15. Click the selected items you want to view the data stream, you can view the "F2 service guide" corresponding to item. For example, we select the item "Engine coolant temptr sensor voltage".

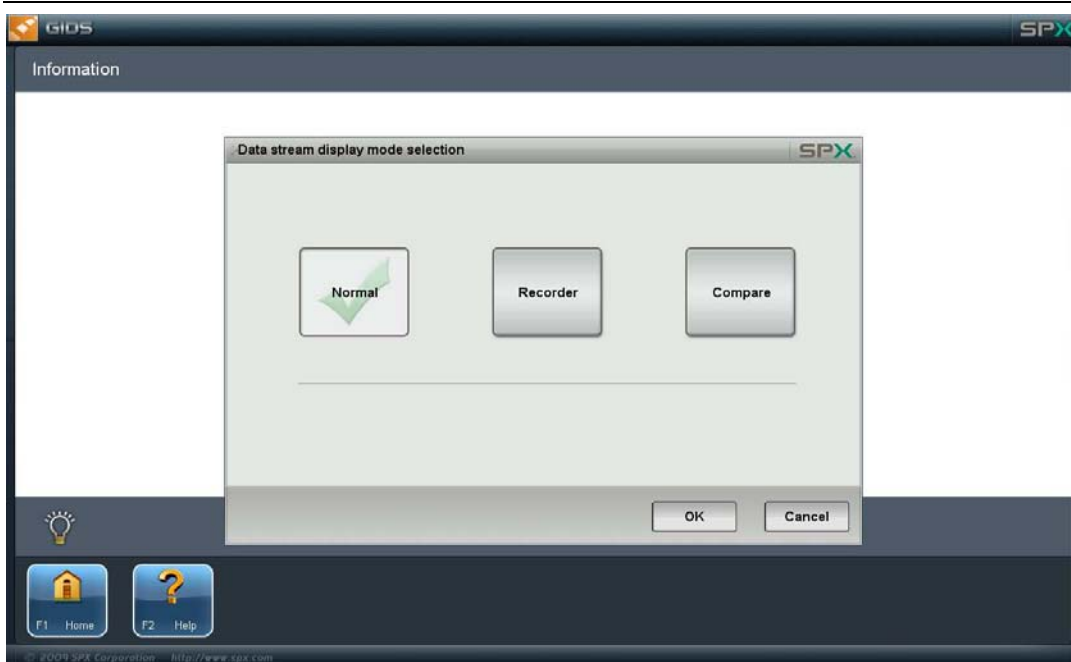




16. You can click Select to view the data flow items or click the "F6 Select All" button to select all of the data flow items, the color blue is selected, see below.



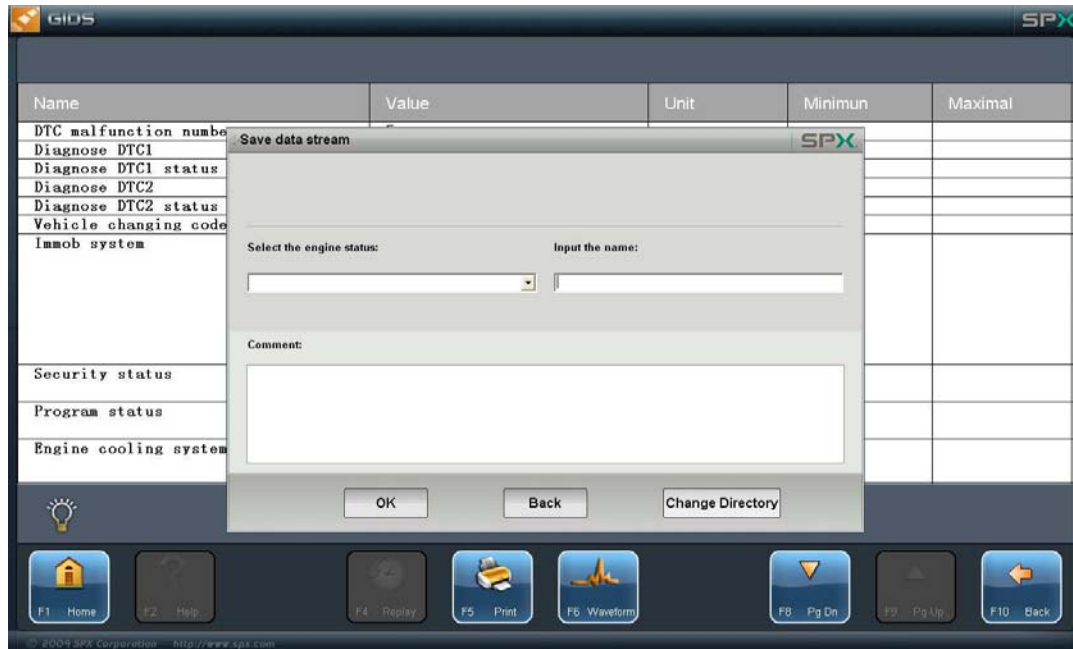
Click the button "F9 OK".



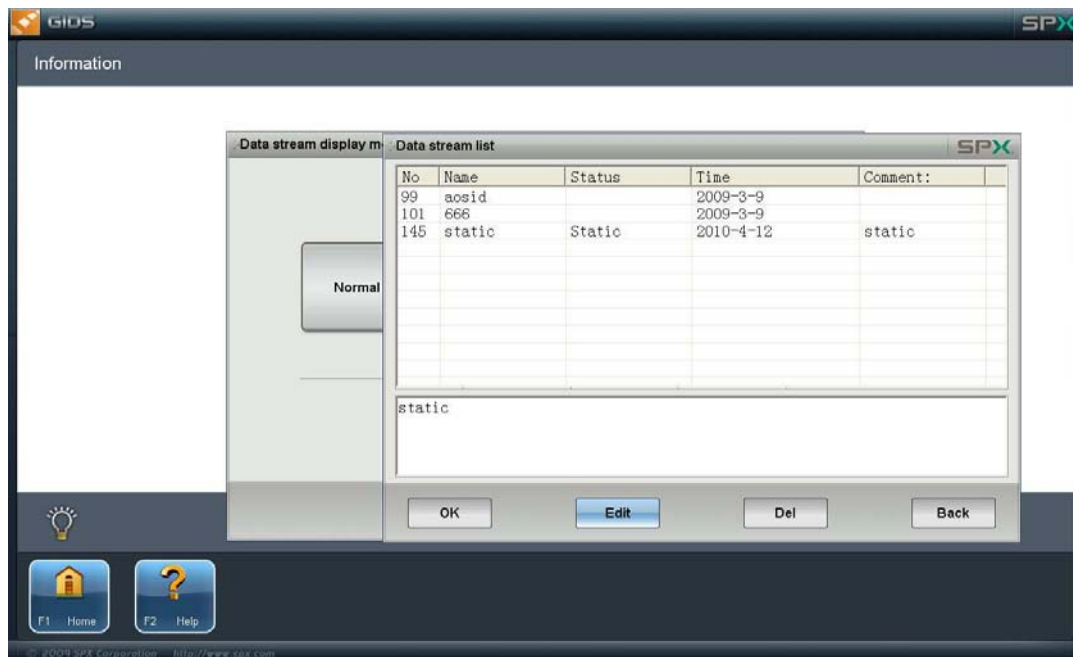
17. We can see that there are three modes: Normal mode, Recorder mode and Compare mode. Normal mode is the basic data flow items that are displayed; Recorder mode can record the data stream under the current situation that stored in the database file, it can also stored in Excel files format and convenient to keep track; Compare mode use the current data stream compared with the previous Recorder model stored in the computer database files. The below is the Normal mode.

Name	Value	Unit	Standard Value
Engine stabilization status	Ignition connecting port 15 open Main relay working		
Oxygen sensor	-----		
Engine idle	-----		
Indicator SVS/MIL	Malfunction indicating lightMIL activation SVS flash SVS malfunction		
A/C system	A/C compressor open		
Automatic transmission/torque request	-----		
Battery voltage	2.0628	Volts	0~18.7859
Engine RPM	0	rpm	0~16383.75
Target idle (no compensation)	1240	rpm	0~2550
Target idle (has compensation)	1240	rpm	0~2550
Vehicle speed	0	mph	0~255
Engine coolant temptr sensor voltage	5	volts	0~5

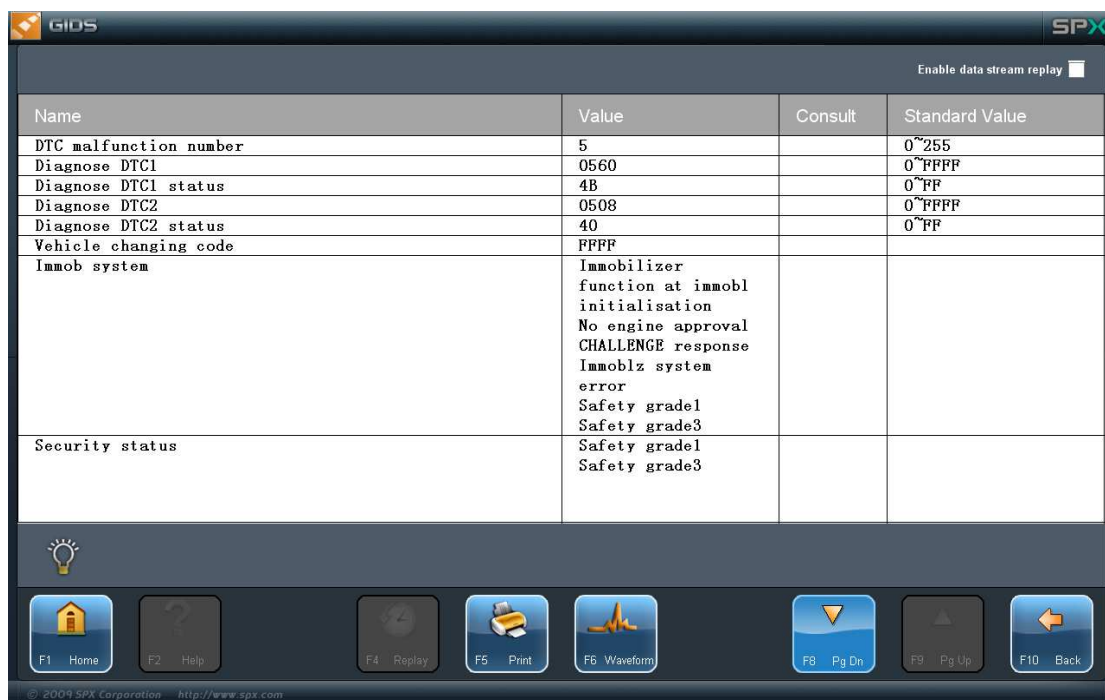
18. Next photo is the Recorder mode, click on the "F10 Back" will be prompted to save the Excel file information, the stored Excel file is used as the default file name "datastream".



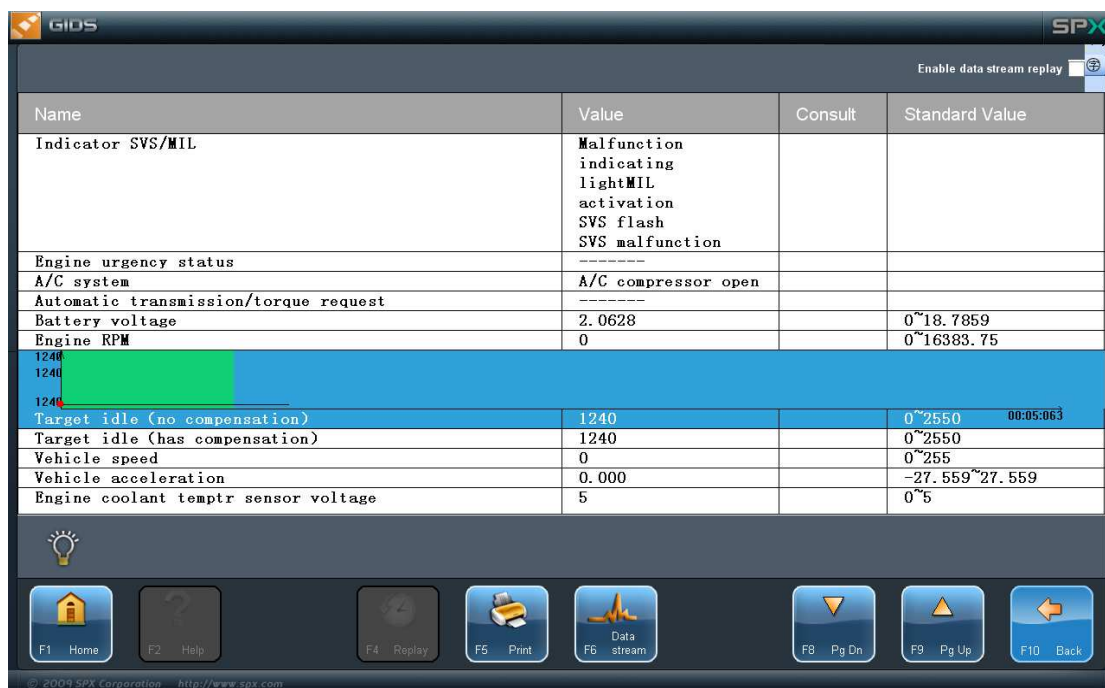
19. Select the Compare mode, the following figure, will be given in a data list dialog box used to Select the previously saved database file for comparison.



The Compare mode is below:



20. When the data stream display, we can use “F8 Pg Dn” and “F9 Pg Up” for the other page, use “F5 Print” button to print the data stream, use “F6 Data stream” to view a data stream item waveform display.



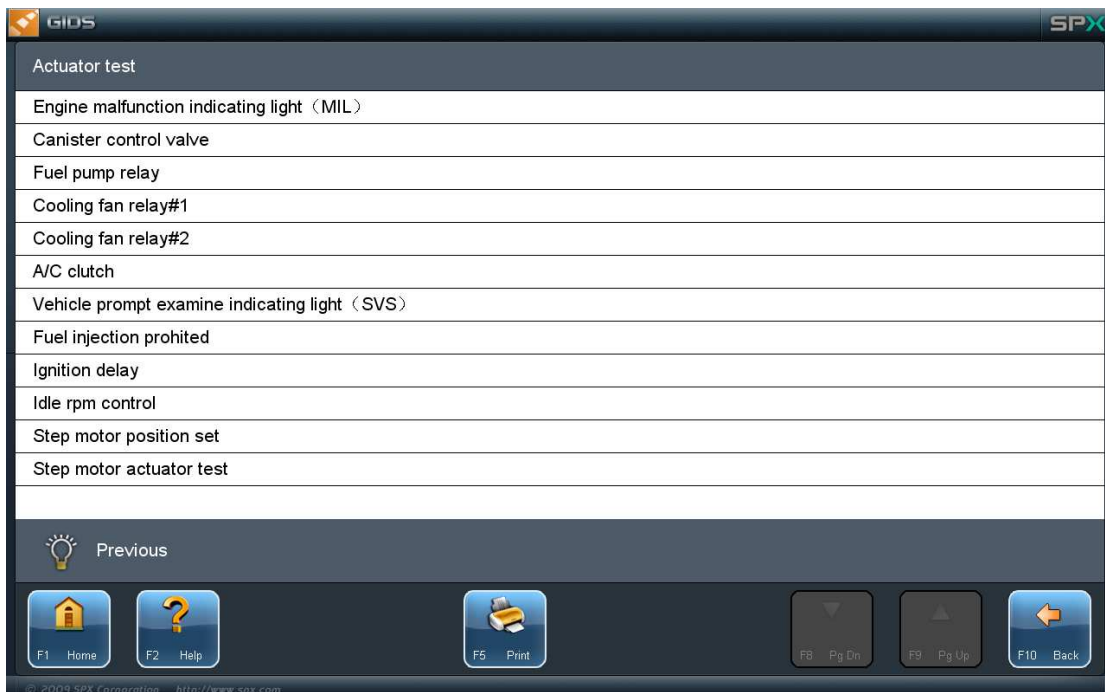
21. Click the item Version info. Enter the interface of Version info.



Version info list	
Vehicle mark serial number(VIN)	L6T7534....
Accessory number code	
ECU basic hardware serial number	BOS 01000261B08925
ECU software serial number	00QR24A222
ECU software version	0000
Finalized serial number	
System name or engine type	JL4G18
Service shop code or diagnosis serial number	123456789A
Program date	20080706
ECU diagnosis data mark(DDI)	61779d
ECU code version	00000000

© 2009 SPX Corporation http://www.spx.com

22. Click the item Actuator test. Enter the interface of Actuator test.



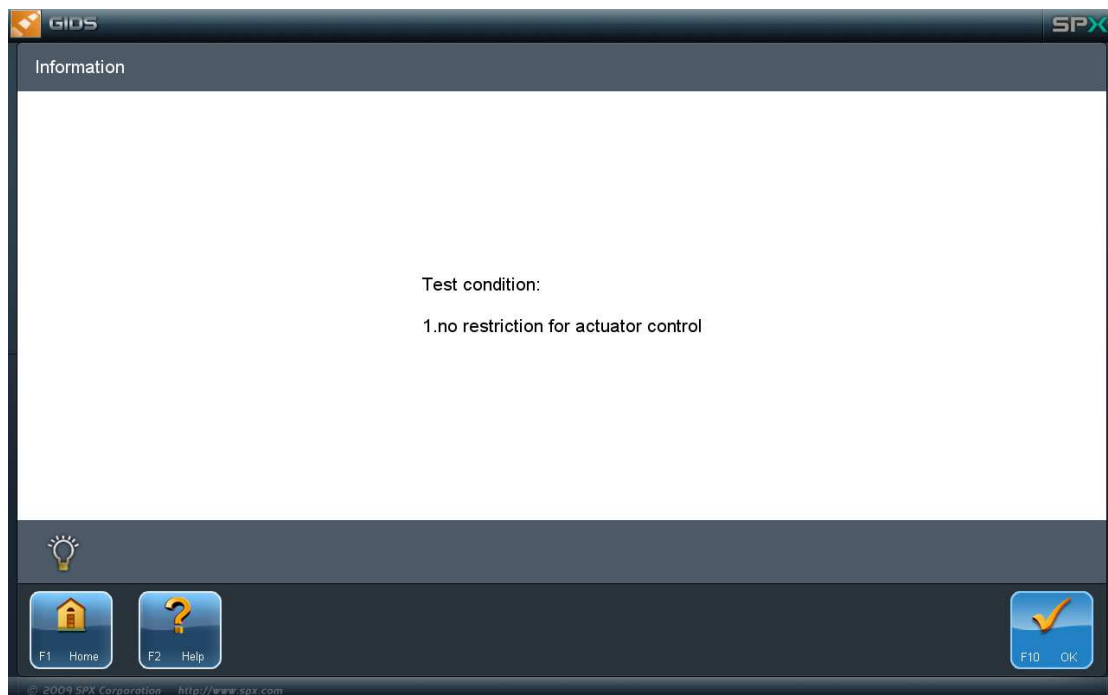
Actuator test	
Engine malfunction indicating light (MIL)	
Canister control valve	
Fuel pump relay	
Cooling fan relay#1	
Cooling fan relay#2	
A/C clutch	
Vehicle prompt examine indicating light (SVS)	
Fuel injection prohibited	
Ignition delay	
Idle rpm control	
Step motor position set	
Step motor actuator test	

© 2009 SPX Corporation http://www.spx.com

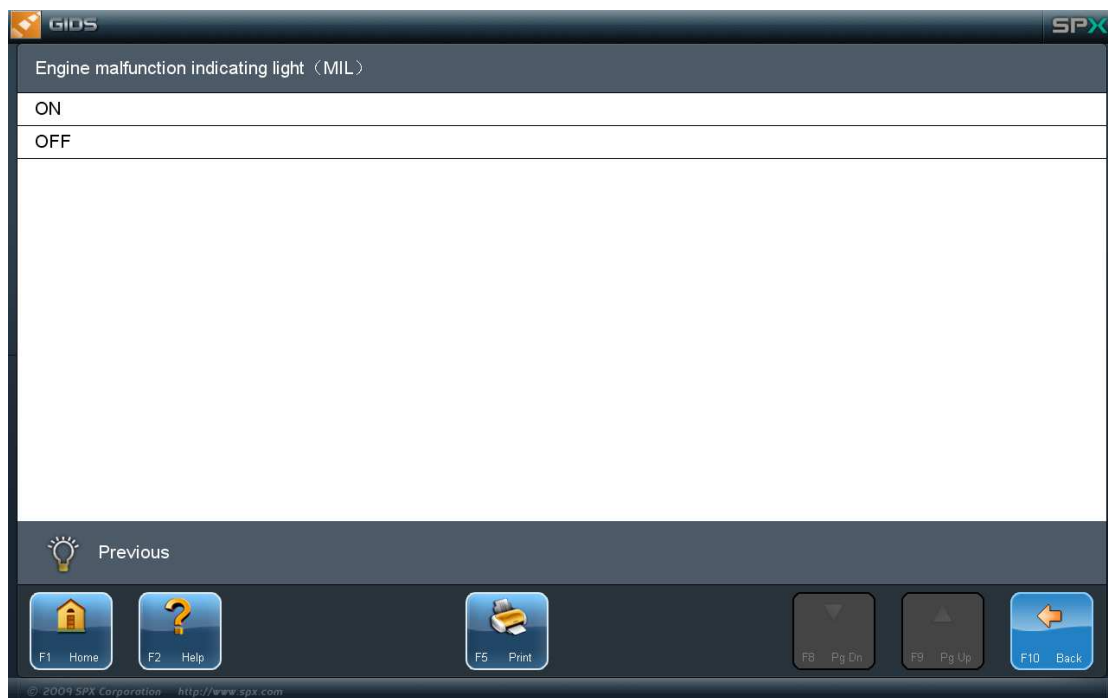
It can work when we click one Actuator test. For example, “Engine malfunction indicating light (MIL)” is used.



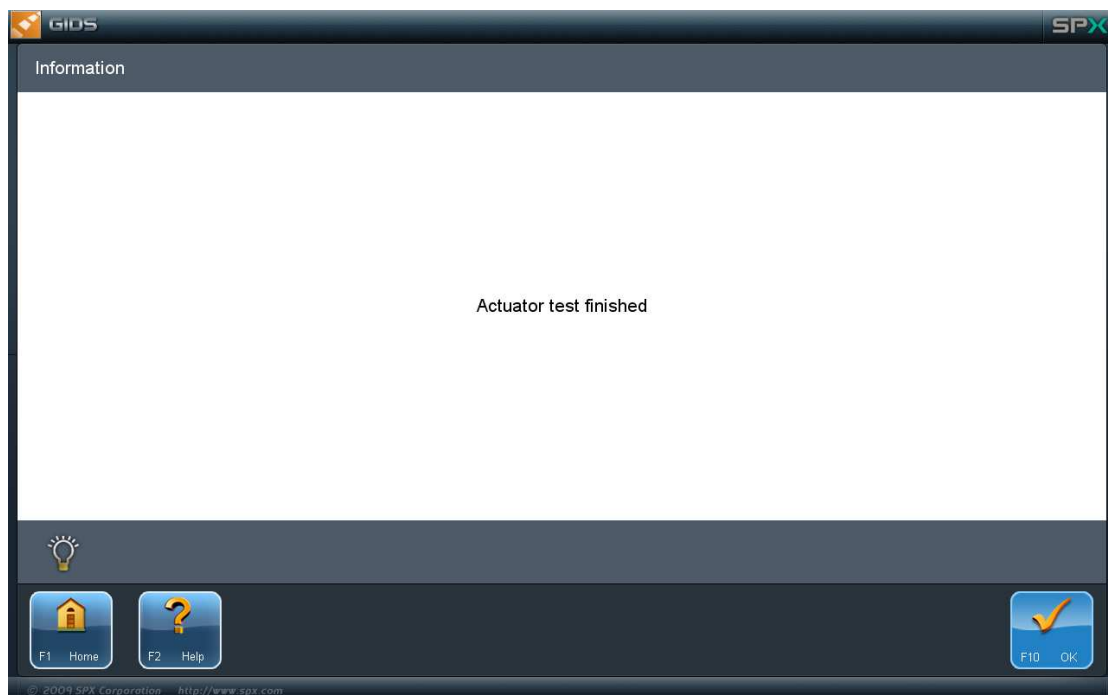
We use some test conditions indicated in the vehicle protocol to avoid damage to the vehicle caused by improper testing



Press the button “F10 OK”



Click the item “ON” or “OFF”, the test will be implemented.



FCC STATEMENT

1. This device complies with Part 15 of the FCC Rules.

Operation is subject to the following two conditions:

(1) This device may not cause harmful interference, and

(2) This device must accept any interference received, including interference that may cause undesired operation.

2. Changes or modifications not expressly approved by the party responsible for compliance could void the user's authority to operate the equipment.

FCC ID: YDJGIDSchDS

This device complies with Part 15 of the FCC Rules.

Operation is subject to the following two conditions: (1)

This device may not cause harmful interference, and (2)

This device must accept any interference received,
including interference that may cause undesired operation.

NOTE: This equipment has been tested and found to comply with the limits for a Class B digital device, pursuant to Part 15 of the FCC Rules. These limits are designed to provide reasonable protection against harmful interference in a residential installation. This equipment generates, uses and can radiate radio frequency energy and, if not installed and used in accordance with the instructions, may cause harmful interference to radio communications. However, there is no guarantee that interference will not occur in a particular installation. If this equipment does cause harmful interference to radio or television reception, which can be determined by turning the equipment off and on, the user is encouraged to try to correct the interference by one or more of the following measures:

- Reorient or relocate the receiving antenna.
- Increase the separation between the equipment and receiver.
- Connect the equipment into an outlet on a circuit different from that to which the receiver is connected.
- Consult the dealer or an experienced radio/TV technician for help.

3. FCC Radiation Exposure Statement:

This equipment complies with FCC radiation exposure limits set forth for an uncontrolled environment. In order to avoid the possibility of exceeding the FCC radio frequency exposure limits, Human proximity to the antenna shall not be less than 20cm (8 inches) during normal operation.