

□ Register BlackVue account

- Ⓐ Search for the BlackVue app in the Google Play Store or Apple App Store and install it on your smartphone.
- Ⓑ Create an account
 - (i) Select **Login** if you have an account, otherwise tap create account.
 - (ii) During sign up, you will receive an e-mail with confirmation code. Enter the confirmation code to finish creating your account.



Sign up for BlackVue Cloud to
enjoy exclusive features

• • • • •

Create account

Log in



Service 19:02

× Create account

Continue with Apple

Continue with Google

OR

First name

Last name

E-mail

Password

Create account

Already have an account? [Log in](#)

☐ Keep me posted on the latest BlackVue news, product features and software updates.

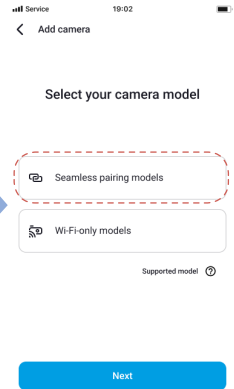
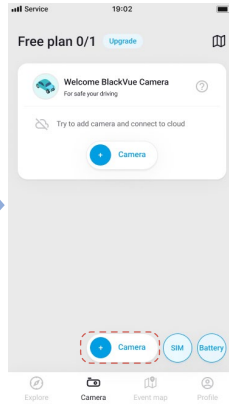
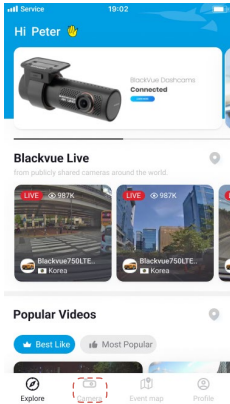
☐ I agree to the [Terms of Service](#), [Privacy Policy](#), [Information We Collect and Why](#) and [Terms of Location-Based Service Use](#).

❑ Add BlackVue dashcam to camera list

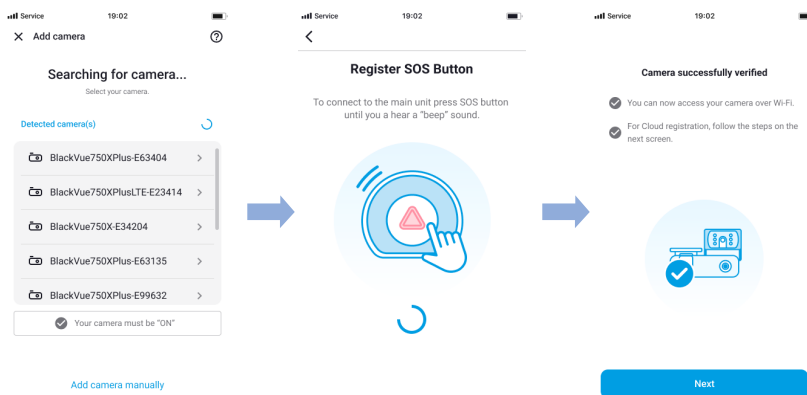
Ⓒ Choose one of the following methods to add your BlackVue dashcam to the camera list. Once your camera is added, continue to the steps in 'Connect to Blackvue Cloud'.

Ⓒ-① Add via Seamless Pairing

- (i) Select **Camera** in the Global Navigation Bar.
- (ii) Find and Press + **Camera**.
- (iii) Select **Seamless Pairing models**. Make sure smartphone's Bluetooth is turned on.

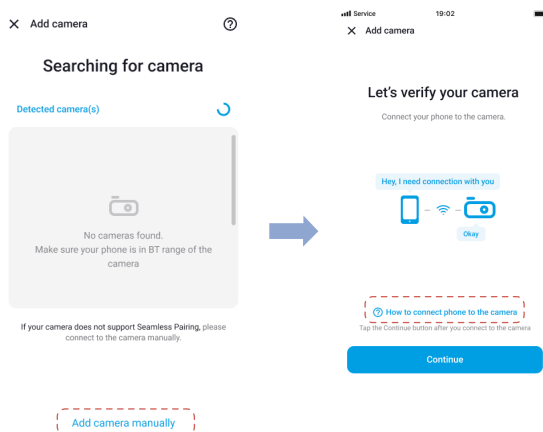


- (iv) Choose your BlackVue dashcam from the detected camera list.
- (v) To connect to the main unit press SOS button until you hear a "beep" sound.



C-2 Add manually

- (i) If you want to connect to camera manually, press **Add camera manually**.
- (ii) Press **How to connect phone to the camera** and follow the instructions.



Note

- Bluetooth and/or Wi-Fi direct has a connection range of 10m between your dashcam and smartphone.
- Dashcam SSID is printed in connectivity details label attached on your dashcam or inside the product box.

❑ Connect to BlackVue Cloud (optional)

If you don't have a mobile Wi-Fi hotspot, BlackVue connectivity module or if you don't want to use the BlackVue Cloud service, you can skip this step.

If you have a mobile Wi-Fi hotspot (also known as a portable Wi-Fi router), BlackVue connectivity module (CM100GLTE), a car-embedded wireless internet network or a Wi-Fi network near your car, you can use the BlackVue app to connect to BlackVue Cloud and see in real-time where your car is and the dashcam's live video feed.

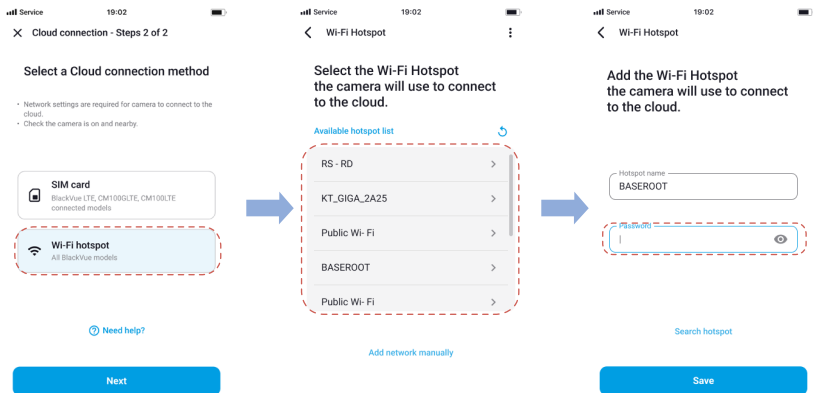
For more information about using the BlackVue app, please refer to the BlackVue App manual from <https://cloudmanual.blackvue.com>.

④ Choose one of the following methods to add your BlackVue dashcam to the camera list. Once your camera is added, continue to the steps in 'Connect to Blackvue Cloud'.

④-① Wi-Fi hotspot

(i) Select **Wi-Fi hotspot**.

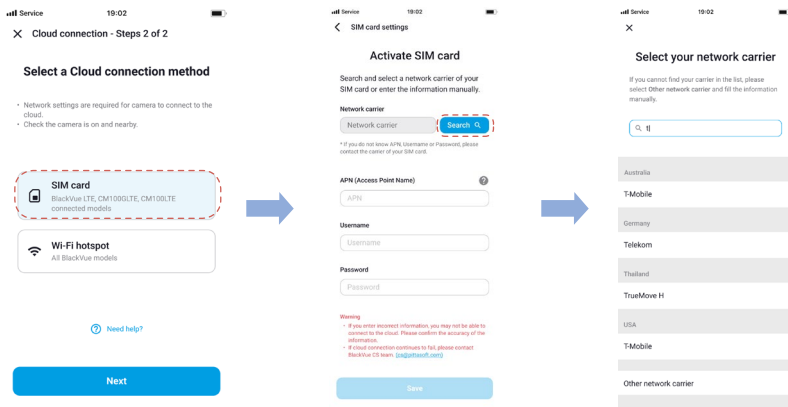
(ii) Choose your Wi-Fi hotspot from the list. Enter the password and tap Save.



D-2 SIM card (Cloud connectivity using CM100GLTE)

Make sure your connectivity module is installed as instructed by the manuals included in the CM100GLTE (sold separately) package. Then, follow the below steps for SIM registration.

- (i) Select **SIM card**.
- (ii) Configure the APN settings to activate the SIM card. For detailed information, please check "SIM activation guide" in the packaging box or visit BlackVue Help Center: www.helpcenter.blackvue.com -> **LTE connectivity guide**.



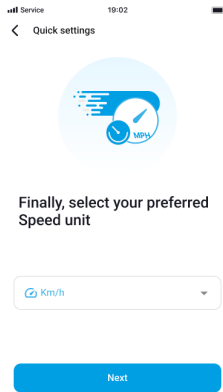
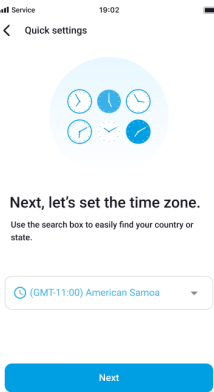
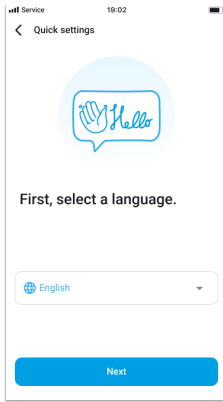
Note

- When the dashcam is connected to internet, you can use BlackVue Cloud features such as remote Live View and Video playback, Real-time location, push notification, Auto-upload, remote Firmware update etc. on BlackVue app and Web Viewer.
- The BlackVue **DR770X Box Series** is not compatible with 5GHz wireless networks.
- To use the BlackVue Cloud Service via LTE network, SIM card must be properly activated for Internet access.
- If LTE and Wi-Fi hotspot is available for internet connection, Wi-Fi hotspot will be in priority. If LTE connection is preferred at all times, please remove Wi-Fi hotspot information.
- Some Cloud features may not work when surrounding temperature is high and/or LTE speed is slow.

□ Quick settings (optional)

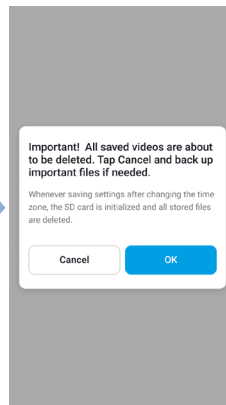
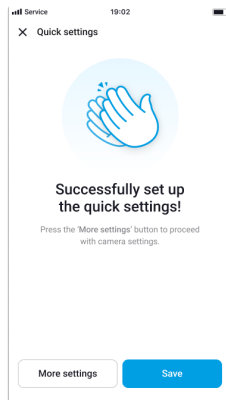
Ⓔ Choose your preferred settings. Quick settings allow you to choose your FW language, time zone, and speed unit. If you prefer to do this later, press **skip**. Otherwise, press **next**.

- (i) Select the firmware language for your BlackVue dashcam. Press **next**.
- (ii) Select a time zone of your location. Press **next**.
- (iii) Select the speed unit of your preference. Press **next**.




(iv) Press **more settings** to access all of the settings or press **save**. Your main unit will format the SD card to apply the settings. Press **OK** to confirm.

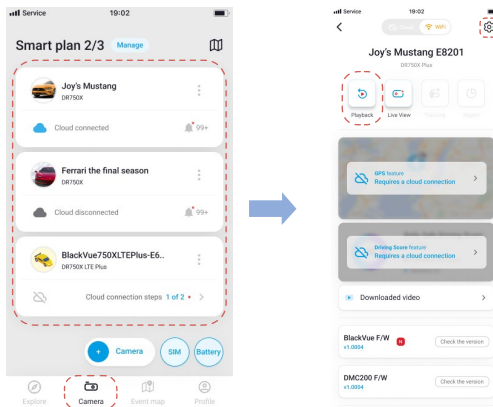
(v) BlackVue dashcam installation is complete.



□ Playing video files and changing settings

After installation is complete, follow the below steps to play video files and change settings.

- (A) Select **Camera** on your Global Navigation Bar.
- (B) Tap your dashcam model in the camera list.
- (C) To play video files, press **Playback** and tap the video you want to play.
- (D) To change the settings, press  settings.

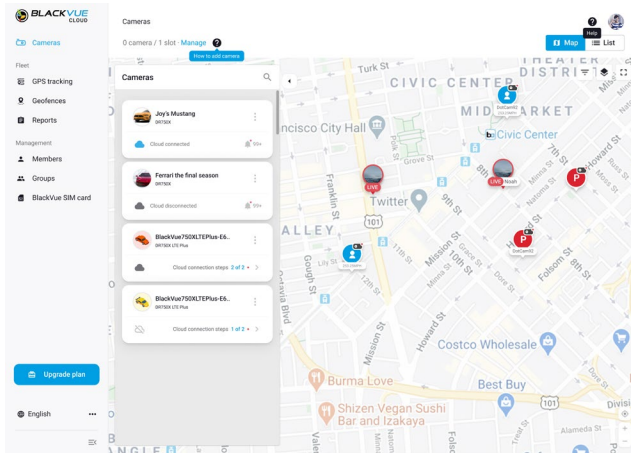


Note

- For more information about BlackVue app, go to <https://cloudmanual.blackvue.com>.

➤ Using BlackVue Web Viewer

To experience the camera features in the Web Viewer, you must create an account and your dashcam must be connected to the Cloud. For this setup, it is recommended to download the BlackVue app and follow the instructions including optional steps in [Using BlackVue App](#) prior to accessing the Web Viewer.



- A Go to www.blackvuecloud.com to access BlackVue Web Viewer.
- B Select **Start Web Viewer**. Enter the login information if you have an account, otherwise press **Sign up** and follow the guidelines in the web Viewer
- C To play video files after login, select your camera in the camera list and press **Playback**. If you have not already added your camera, press **Add camera** and follow the guidelines in the Web Viewer.
- D Select the video you want to play from the video list.

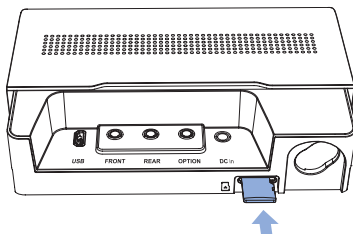
Note

- For more information about BlackVue Web Viewer features, refer to the manual from <https://cloudmanual.blackvue.com>.

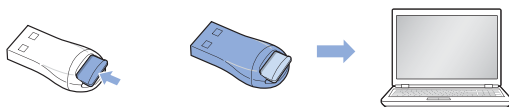
▶ Using BlackVue Viewer

□ Playing video files and changing settings

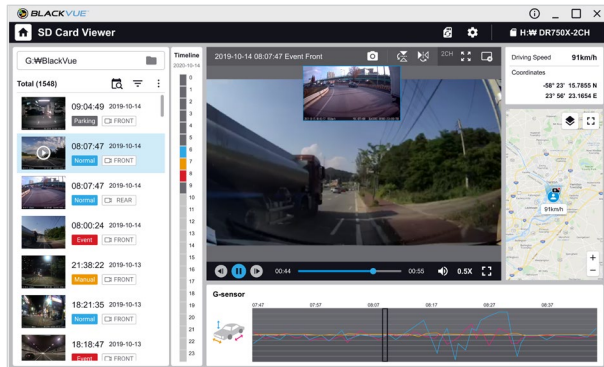
- Ⓐ Remove the microSD card from the main unit.



- Ⓑ Insert the card into the microSD card reader and connect it to a computer.



- Ⓒ Download BlackVue Viewer program from www.blackvue.com > **Support** > **Downloads** and install it on your computer.
- Ⓓ Run BlackVue Viewer. To play, select a video and click on the play button or double click the selected video.
- Ⓔ To change settings, click on the ⚙ button to open the BlackVue settings panel. Settings that can be changed include Wi-Fi SSID & password, image quality, sensitivity settings, voice recording on/off, speed unit (km/h, MPH), LEDs on/off, voice guidance volume, Cloud settings etc.





Windows/macOS Viewer

Note

- For more information about BlackVue Viewer, go to <https://cloudmanual.blackvue.com>.
- All images shown are for illustration purpose only. Actual program may differ from images shown.

» Tips for optimal performance

- (A)** For stable operation of the dashcam, it is recommended to format the microSD card once a month.
- Format using BlackVue App (Android/iOS):**
Go to **BlackVue App** > **☰** > **Format microSD card** and format the microSD card.
- Format using BlackVue Viewer (Windows):**
Download **BlackVue Windows Viewer** from www.blackvue.com > **Support** > **Downloads** and install it on your computer. Insert the microSD card into the microSD card reader and connect the reader to your computer. Launch the copy of BlackVue Viewer that is installed on your computer. Click the Format  button, select the card drive and click OK.
- Format using BlackVue Viewer (macOS):**
Download **BlackVue Mac Viewer** from www.blackvue.com > **Support** > **Downloads** and install it on your computer. Insert the microSD card into the microSD card reader and connect the reader to your computer. Launch the copy of BlackVue Viewer that is installed on your computer. Click the Format  button and select the microSD card from the list of drives in the left frame. After selecting your microSD card select the Erase tab in the main window. Select "MS-DOS (FAT)" from the Volume Format drop-down menu and click Erase.
- (B)** Only use official BlackVue microSD cards. Other cards may have compatibility issues.
- (C)** Regularly upgrade the firmware for performance improvements and updated features. Firmware updates will be made available for download at www.blackvue.com > **Support** > **Downloads**.

Customer Support

For customer support, manuals and firmware updates please visit www.blackvue.com

You can also email a Customer Support expert at cs@pittasoft.com

Product specifications:

Model Name	DR770X Box Series
Color/Size/Weight	Main unit : Black / Length 130.0 mm x Width 101.0 mm x Height 33.0 mm / 209 g Front : Black / Length 62.5 mm x Width 34.3 mm x Height 34.0 mm / 43 g Rear : Black / Length 63.5 mm x Width 32.0 mm x Height 32.0 mm / 33 g Rear Truck : Black / Length 70.4 mm x Width 56.6 mm x Height 36.1 mm / 157 g Interior IR : Black / Length 63.5 mm x Width 32.0 mm x Height 32.0 mm / 34 g EB-1 : Black / Length 45.2 mm x Width 42.0 mm x Height 14.5 mm / 23 g
Memory	microSD Card (32 GB/64 GB/128 GB/256 GB)
Recording Modes	Normal recording, Event recording (when impact is detected in normal and parking mode), Manual recording and Parking recording (when motion is detected) * When using Hardwiring Power Cable, ACC+ will trigger parking mode. When using other methods, G-sensor will trigger parking mode.
Camera	Front : STARVIS™ CMOS Sensor (Approx. 2.1 M Pixel) Rear/Rear Truck : STARVIS™ CMOS Sensor (Approx. 2.1 M Pixel) Interior IR : STARVIS™ CMOS Sensor (Approx. 2.1 M Pixel)
Viewing Angle	Front : Diagonal 139°, Horizontal 116°, Vertical 61° Rear/Rear Truck : Diagonal 116°, Horizontal 97°, Vertical 51° Interior IR : Diagonal 180°, Horizontal 150°, Vertical 93°
Resolution/Frame Rate	<Front - Rear/Rear Truck - Interior IR> Full HD (1920x1080) @ 60 fps - Full HD (1920x1080) @ 30 fps - Full HD (1920x1080) @ 30 fps *Frame rate may vary during Wi-Fi streaming.
Video Codec	H.264 (AVC)
Image Quality	Highest (Extreme): 16 + 10 + 8 Mbps Highest: 12 + 10 + 8 Mbps High: 10 + 8 + 6 Mbps Normal: 8 + 6 + 4 Mbps
Video Compression Mode	MP4
Wi-Fi	Built-in (802.11 b,g,n)
GNSS	External (Dual Band : GPS, GLONASS)
Bluetooth	Built-in (V2.1+EDR/4.2)
LTE	External (Optional)
Microphone	Built-in
Speaker (Voice Guidance)	Built-in
LED Indicators	Main unit : Recording LED, GPS LED, BT/Wi-Fi/LTE LED Front : Front & Rear Security LED Rear: Front & Rear Security LED Rear Truck: None Interior IR : Front&Rear Security LED EB-1 : Operating/Battery low voltage LED


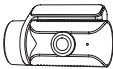
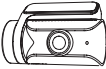
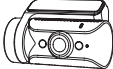




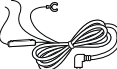

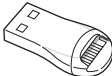

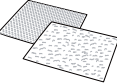

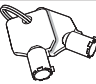

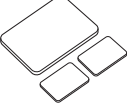

Wavelength of IR camera light	Rear Truck : 940nm (6 Infrared (IR) LEDS) Interior IR : 940nm (2 Infrared (IR) LEDS)
Button	EB-1 button : Press the button - manual recording.
Sensor	3-Axis Acceleration Sensor
Backup Battery	Built-in super capacitor
Input Power	DC 12V-24V (3 pole DC Plug(Ø3.5 x Ø1.1) to Wires (Black: GND / Yellow: B+ / Red: ACC)
Power Consumption	Normal Mode (GPS On / 3CH) : Avg. 730mA / 12V Parking Mode (GPS Off / 3CH) : Avg. 610mA / 12V * Approx. 40mA increase in current when Interior Camera IR LEDs are ON. * Approx. 60mA increase in current when Rear Truck Camera IR LEDs are ON. * Actual power consumption may vary depending on use conditions and environment.
Operation Temperature	-20°C – 70°C (-4°F – 158°F)
Storage Temperature	-20°C – 80°C (-4°F – 176°F)
High Temperature Cut-Off	Approx. 80 °C (176 °F)
Certifications	Front (with Main unit & EB-1) : FCC, IC, CE, UKCA, RCM, Telec, WEEE, RoHS Rear, Rear Truck & Interior IR : KC, FCC, IC, CE, UKCA, RCM, WEEE, RoHS
Software	BlackVue Application * Android 8.0 or higher, iOS 13.0 or higher BlackVue Viewer * Windows 7 or higher, Mac Sierra OS X (10.12) or higher BlackVue Web Viewer * Chrome 71 or higher, Safari 13.0 or higher
Other Features	Adaptive Format Free File Management System

* STARVIS is a trademark of Sony Corporation.

Комплектация изделия

Перед установкой видеорегистратора BlackVue проверьте комплектацию изделия.

□ Устройства DR770X Box (передняя камера + задняя камера + инфракрасная камера)

	Основной блок		Передняя камера
	Задняя камера		Задняя инфракрасная камера
	Кнопка тревоги (SOS)		Внешний GPS
	Кабель питания основного блока с разъемом для подключения к прикуривателю (3-штыревой)		Кабель для подключения камеры (3 шт.)
	Силовой кабель основного блока (3-штыревой)		Карта microSD
	Устройство для считывания карт microSD		Краткое руководство пользователя
	Лента с липучкой		Рычажок
	Ключ основного блока		Шестигранный ключ
	Двусторонняя клейкая лента для кронштейнов		Зapasные винты для крепления крышки защиты от несанкционированного доступа (3 шт.)

В помощь пользователю

Руководство (вместе с часто задаваемыми вопросами) и последнюю версию программной прошивки можно скачать с сайта www.blackvue.com или получить у специалиста службы технической поддержки, отправив ему сообщение по адресу cs@pittasoft.com

☐ Устройства DR770X Box для грузового автомобиля (передняя камера + инфракрасная камера + ERC1 (грузовой автомобиль))

	Основной блок		Передняя камера
	Задняя инфракрасная камера		Инфракрасная задняя камера для грузового автомобиля
	Кнопка тревоги (SOS)		Внешний GPS
	Кабель питания основного блока с разъемом для подключения к прикуривателю (3-штыревой)		Кабель для подключения камеры (2 шт.)
	Силовой кабель основного блока (3-штыревой)		Кабель для подключения задней камеры (15 м, водонепроницаемый)
	Винты для крепления камеры грузового автомобиля к кронштейнам (3 шт.)		Карта microSD
	Устройство для считывания карт microSD		Краткое руководство пользователя
	Лента с липучкой		Рычажок
	Ключ основного блока		Шестигранный ключ
	Двусторонняя клейкая лента для кронштейнов		Запасные винты для крепления крышки защиты от несанкционированного доступа (2 шт.)

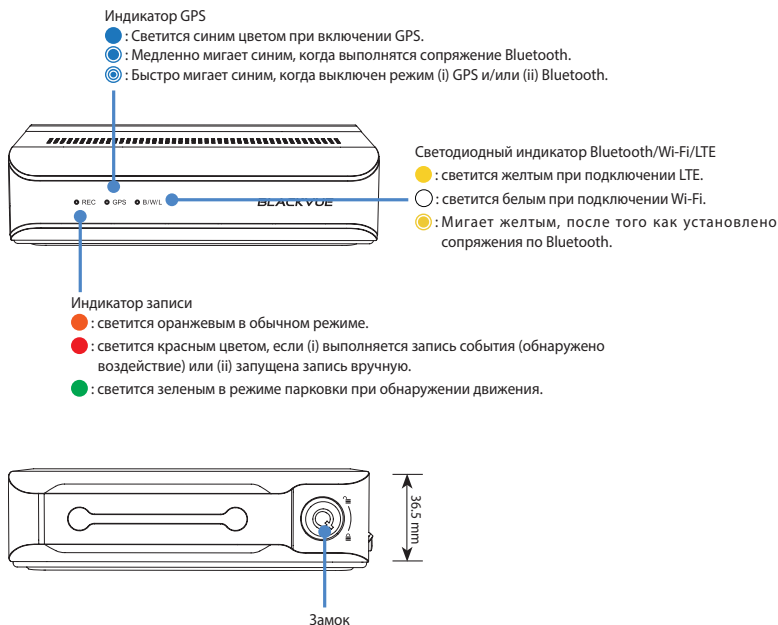
В помощь пользователю

Руководство (вместе с часто задаваемыми вопросами) и последнюю версию программной прошивки можно скачать с сайта www.blackvue.com или получить у специалиста службы технической поддержки, отправив ему сообщение по адресу cs@pittasoft.com

Внешний вид

На схемах ниже представлены все изделия DR770X Box.

Основной блок



Кнопка тревоги (SOS)

