

AC123 Transmitter Instruction V1.0.1

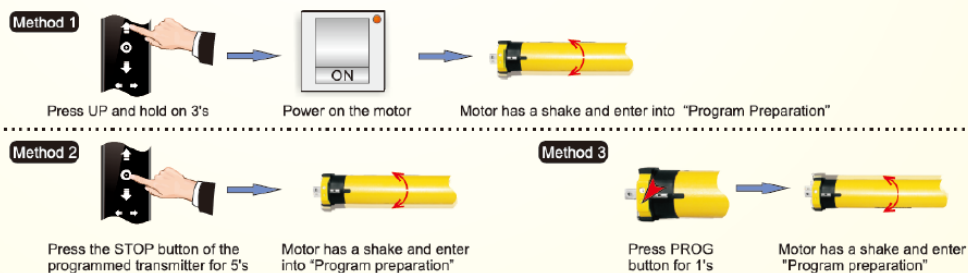


Main Features

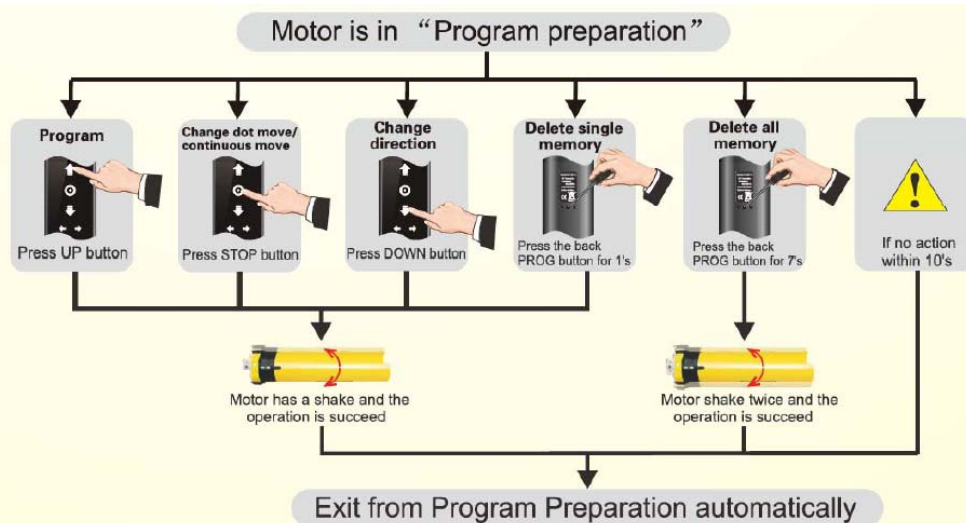
- 1.Simple trend design with acrylic screen
- 2.Luxurious piano lacquer surface treatment, honorable and elegant
- 3.Acrylic surface panel with high hardness, no scratch and flawless looking
- 4.Advanced touch technology, sensitive ad high anti-jamming
- 5.White and black color, suit to various decorations
- 6.CR2032 button battery, easy to get and replace
- 7.Lower power consumption, battery last 2-3 years

II .Operation Instruction

1.Program Preparation

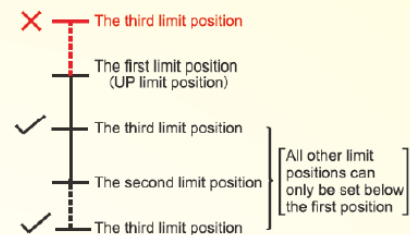


2. Program and Function setting

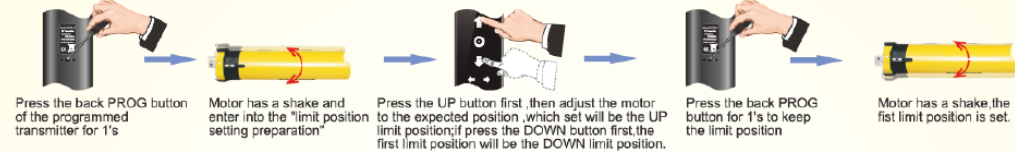


3、Remarks for limit position setting

- Maximum six different limit positions can be set, the furthest two positions called the UP and DOWN limit position, others called the middle limit positions;
- When the first limit position is the UP limit position(as right illustration), all other limit positions can only be set below this position; the same thing, when the first limit position is the DOWN limit position, all other limit positions can only be set above this position;
- Every limit position can be fine-tuned or deleted separately(The first limit position can only be fine-tuned but can't be deleted separately. It can be deleted when delete all memories);
- The motor stops at the next limit position after accepting once UP/DOWN order. When it reaches the UP limit position, the UP order is no use any more; when it reaches the DOWN limit position, the DOWN order is no use;
- Press the UP/DOWN button twice on the transmitter at the speed of once a second, motor will go directly to the UP/DOWN limit position without any stop at the middle limit



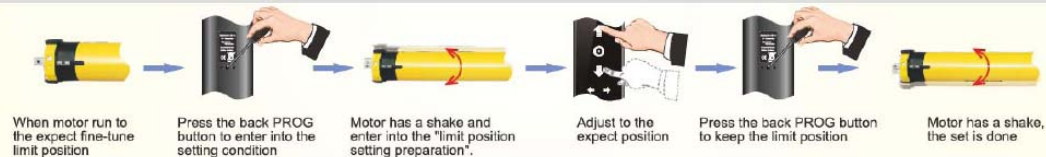
4、The first limit position setting. * (If no actions within 10's, motor exits from the limit position setting preparation automatically.)



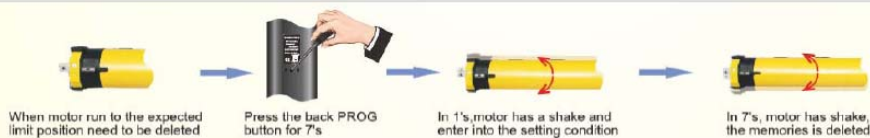
5、Other limit positions setting * (If no actions within 10's, motor exits from the limit position setting preparation automatically.)



6、Fine-tune limit position * (If no actions within 10's, motor exits from the limit position setting preparation automatically.)

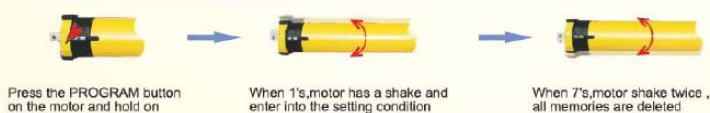


7、Delete limit position * The first limit position can't be deleted



8、Press PROG button on the motor to delete all memories

* When all memories are deleted, the motor go back to the factory settings



III . Trouble shooting

Items	Problem	Matter	Shooting
1	After connecting with the power, the motor can not work or work slowly.	a. The voltage is wrong b. Over loading c. Wrong installation cause accessories stuck	a. Change to rated voltage b. Adjust loading until safety loading c. Check accessories and ensure the correct installation
2	The motor stops running suddenly	a. The motor is in the mode of over-heat protection; precaution, over 130℃ b. Power is off	a. when temperature drops(after about 3 minutes), the motor will come back to work again b. Once connecting with the power well, the motor will come back to work

FCC Statement

This equipment has been tested and found to comply with the limits for a Class B digital device, pursuant to part 15 of the FCC rules. These limits are designed to provide reasonable protection against harmful interference in a residential installation. This equipment generates, uses and can radiate radio frequency energy and, if not installed and used in accordance with the instructions, may cause harmful interference to radio communications. However, there is no guarantee that interference will not occur in a particular installation. If this equipment does cause harmful interference to radio or television reception, which can be determined by turning the equipment off and on, the user is encouraged to try to correct the interference by one or more of the following measures:

- Reorient or relocate the receiving antenna.
- Increase the separation between the equipment and receiver.
- Connect the equipment into an outlet on a circuit different from that to which the receiver is connected.
- Consult the dealer or an experienced radio/TV technician for help.

To assure continued compliance, any changes or modifications not expressly approved by the party Responsible for compliance could void the user' s authority to operate this equipment. (Example- use only shielded interface cables when connecting to computer or peripheral devices).