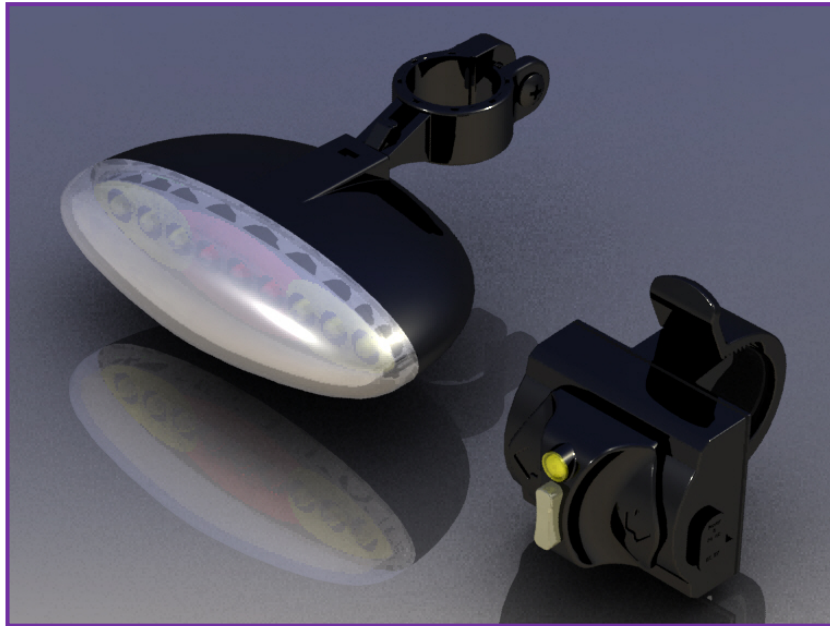


## 2.4GHz Wireless Indicator

**LANTAC**

Model No: LTC-001



**\*Wireless:** The patent design is using the communication of static electricity of long wave to control the signal to the whole bicycle. And it doesn't use any wire.

**\*Smart saving electricity:** Due to the product have light sensor, it can adjust the brightness of LEDs when the environment was light or dark. Don't worry that forget to turn off.

**\*The display of low voltage**

**\*48 hours (The operate time)**

**\*Brake light:** Automatic sensor of brake, no cable.

**\*Searching:** Searching the position of bicycle By "controller".

**\*Battery:** Rechargeable Li battery.

### 1.1 Product & Assembly

Indicator (Including fixed base & Li battery)	1 pcs	Small screw (For controller)	4 pcs
controller (Including fixed base & Li battery)	1 pcs	Instruction	1 pcs
Charge cable(USB/DC Plug) L:50cm	1 pcs	Warranty Card	1 pcs
Screw & Nut (For controller)	1 set		

## 1.2 Specification

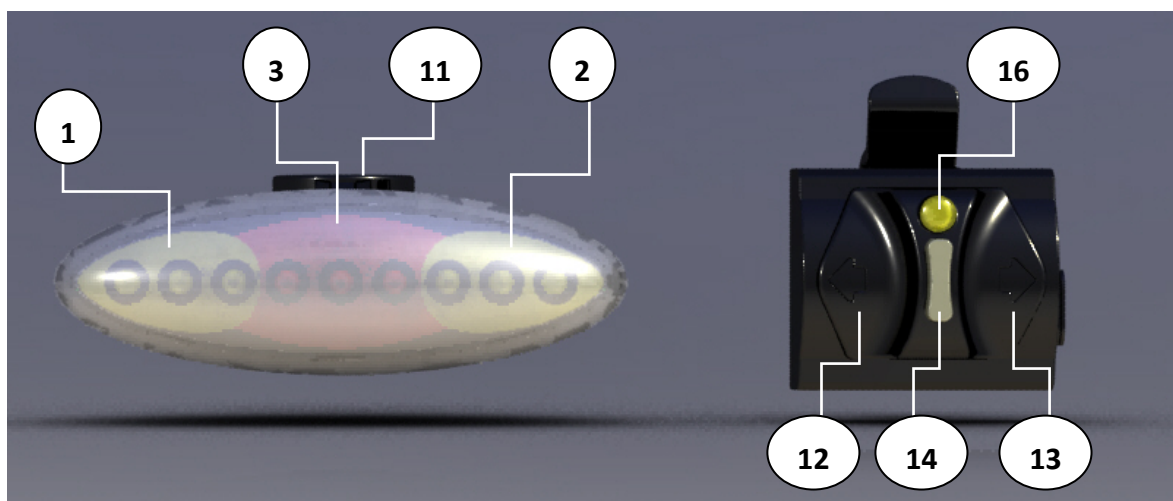
Li battery	Voltage: 3.7V	
	Battery Capacity: 560 mAh	
	Operating Temperature: 0 to 45°C (Charge), -10 to 60°C (Discharge)	
Charge cable	Input: USB-A Port 5V / 500mA	
	Output: DC Plug 5V / 300mA	
Dimension	Indicator	117.7*76.7*38.4mm
	Controller	53.4*41.1*46.1mm
Weight	Indicator	Around 130gs.
	Controller	Around 70gs.
Standby Time	Indicator	Around 240 hours.
	Controller	Around 240 hours.
Using time (Continue)	Indicator	Around 28 hours.
	Controller	Around 40 hours.

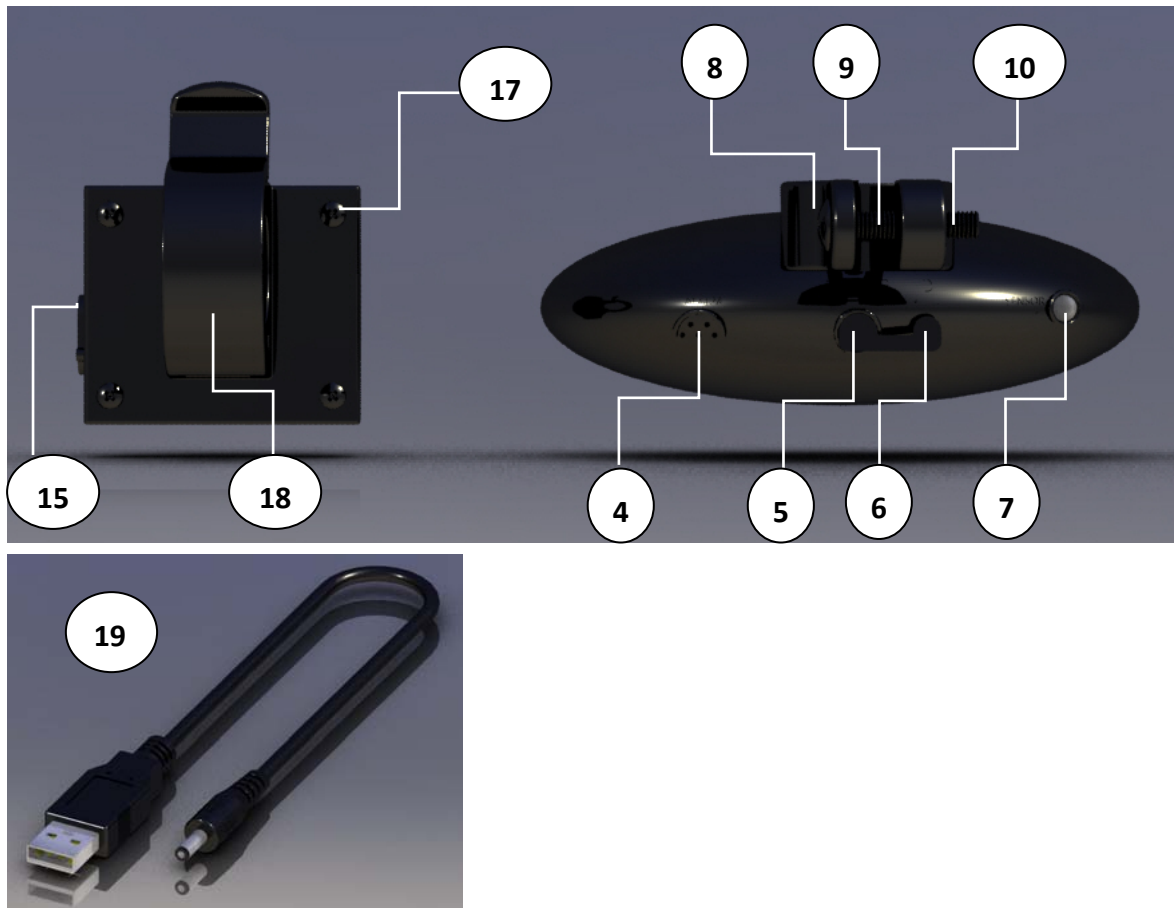
\*"Standby time" is meaning that user didn't use any function and didn't move the product.

## 1.3 Every parts name of LTC-001

1	Left indicator	11	Removable notch
2	Right indicator	12	Left button & Turn on
3	Hazard light	13	Right button & Turn off
4	The hole of alarm	14	Stop Button
5	Charge port (Indicator)	15	Charge port (controller)
6	Reset	16	Power light
7	Light sensor	17	Screw*4pcs(For controller)
8	Fixed base of indicator	18	Fixed base of controller
9	Screw (For fixed base of indicator)	19	Charge wire
10	Nut (For fixed base of indicator)		

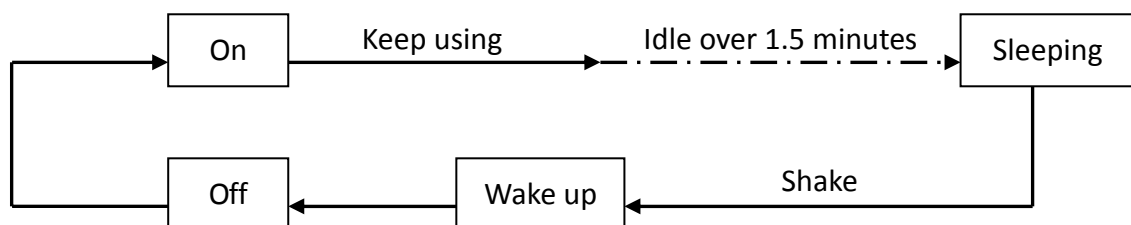
\*\*The parts of position of LTC-00188\*\*





## 2 Functions

The product has three conditions as follows,



The description of above three conditions as follows,

A	Off	The power light of controller is not glitter.
		The red light of indicator is not glitter.
B	On / Wake up	The power light of controller is glitter. (Frequency of glitter: around eight seconds two times.)
		The red light of indicator is glitter. (Frequency of glitter: around one second one times.)
C	Sleeping	The power light of controller is glitter. (Frequency of glitter: around eight seconds two times.)
		The red light of indicator is glitter "slightly". (Frequency of glitter: around two seconds two times.)

## 2.1 On / Off

**Turn On:** "Keep press" on the left button of controller and red light of controller and indicator shine.

**Turn Off:** "Keep press" on the right button of controller and red light of controller and indicator extinguish.

## 2.2 The button of turn left, turn right and stop

**The button of turn left:** When you turn left, press the button of left of controller, the indicator will show turn left.

**The button of turn right:** When you turn right, press the button of right of controller, the indicator will show turn right.

**The button of stop:** When you stop to turn left or right, press the button of stop of controller and then return to normal condition.

## 2.3 Alarm condition

\* Turn on the alarm condition:

First, please check the condition of product is "ON"(not sleeping) and "keeping press" the button of stop around 2 seconds until hearing "BI". At the same time, the light of indicator will glitter once and into alarm condition.

The sound of alarm:

If anybody moves the indicator, the sound of alarm will keep the "BI" of sound cycle that is every 1.5 seconds and total ten cycles. And if you keep to move indicator, the sound of alarm will keep "BI -----".

◆ The sound of alarm: 80 db (Distance: 10cm)

\*Cancel the condition of alarm: Keeping press the left button.

## 2.4 Automatic brake sensor

When user brake the bicycle, the indicator can reaction brake automatically around ten seconds.

In addition, the function of brake is set up priority.

◆ Warning light and brake light has the function of saving electricity. The light will be change by day and night.

## 2.5 Charged battery

### Low-electricity:

When the electricity of product is low, you have to charge it. Below condition is the show of low-electricity as follows,

Turn On: The third LED of indicator will glitter.

The LED of controller will glitter.



Turn Off: The seventh LED of indicator will glitter.

The LED of controller will glitter.



**Charge:**

When you want to charge the product, you have to turn off the product first. Below condition is the show of charge as follows,

Controller:

When the controller is charged, the power light will be keep glitter.

When the controller is finish charging, the power light will be stop glittering.

Indicator:

When the indicator is charged, the red LED will keep glitter.

When the indicator is finish charging, the red light will be stop glittering.

**2.6 RESET**

Indicator:

When the function of product is abnormal, please pressing the button of RESET around 3 seconds and then loosen it. The system will be renew and start to working again.

Controller:

When the function of product is abnormal, please pressing the button of RESET and left (ON) around 3 seconds and then loosen it. The system will be renew and start to working again.

**2.7 Light sensor**

The product can adjust the level of light and shade by light sensor, also it can achieve to save electricity.

**Warning:**

- (1) The control of one way.
- (2) Non use in the airport and other air control area.
- (3) When using the product at the control area of military, it should be depend on the restriction of regulation.
- (4) Using the remote control of aircraft of aviation model, it should compliance the aviation of aircraft of remote control of radio on the restriction of regulation.

**Diagram of assembly:**

## **Federal Communication Commission Interference Statement**

This equipment has been tested and found to comply with the limits for a Class B digital device, pursuant to Part 15 of the FCC Rules. These limits are designed to provide reasonable protection against harmful interference in a residential installation. This equipment generates, uses and can radiate radio frequency energy and, if not installed and used in accordance with the instructions, may cause harmful interference to radio communications. However, there is no guarantee that interference will not occur in a particular installation. If this equipment does cause harmful interference to radio or television reception, which can be determined by turning the equipment off and on, the user is encouraged to try to correct the interference by one of the following measures:

- Reorient or relocate the receiving antenna.
- Increase the separation between the equipment and receiver.
- Connect the equipment into an outlet on a circuit different from that to which the receiver is connected.
- Consult the dealer or an experienced radio/TV technician for help.

FCC Caution: Any changes or modifications not expressly approved by the party responsible for compliance could void the user's authority to operate this equipment.

This device complies with Part 15 of the FCC Rules. Operation is subject to the following two conditions: (1) This device may not cause harmful interference, and (2) this device must accept any interference received, including interference that may cause undesired operation.

This device and its antenna(s) must not be co-located or operating in conjunction with any other antenna or transmitter.

