

TEST REPORT N°: (5211)078-0202

TEST REPORT

To:	MAC DUE INTERNATIONAL LTD.	To:	-
Attn:	Cheng Liu	Attn:	-
Address:	Unit 2102, Greenfield Tower, Concordia Plaza, No.1 science Museum Road, Tsim Sha Tsui East Kowloon, Hong Kong	Address:	-
Fax:	0755-86317106	Fax:	-
E-mail:	cheng@innovation-hk.com	E-mail:	-
Folder No.:	BVCK11FE004MTHS-B-A1		
Factory name:	--		
Location:	--		
Product:	1:20 Aston Martin B/O Model Number: KD0725A		
		Sample No:	(5211)078-0202
		Test date:	March 23, 2011
		Test Requested:	FCC Part 15 - 2009
		Test Method:	ANSI C63.4 – 2003
		FCC ID:	YB9R-2049MHZ
The results given in this report are related to the tested specimen of the described electrical apparatus.			
CONCLUSION: The submitted sample was found to <u>COMPLY</u> with requirement of FCC Part 15 Subpart C.			
Authorized Signature:			
			
Reviewed by: Keith Yeung		Approved by: Steven Tsang	
Date: March 30, 2011		Date: March 30, 2011	



TEST REPORT N°: (5211)078-0202

Location of the test laboratory

Radiated and Conducted emissions measurements are investigated and taken pursuant to the procedures of ANSI C63.4 – 2003. An Open Area Test Site and Full Anechoic Chamber (FCC Listed Site, Registration No. 642151) are set up for investigation and located at :

BUREAU VERITAS HONG KONG LIMITED, EMC CENTRE

No. 2106-2107, 21/F., Westin Centre,
26 Hung To Road,
Kwun Tong, Kowloon,
Hong Kong

List of measuring equipment

Radiated Emission

EQUIPMENT	MANUFACTURER	MODEL NO.	SERIAL NO.	CALIBRATION DUE
EMI TEST RECEIVER	R&S	ESCI	100379	06-SEP-2011
LOOP ANTENNA	ETS-LINDGREN	6502	00102266	17-MAY-2011
BILOG ANTENNA	SCHAFFNER	CBL6112D	25229	02-AUG-2011
OPEN AREA TEST SITE	BVCPS	N/A	N/A	05-JUL-2011
ANECHOIC CHAMBER	ALBATROSS	M-CDC	80374004499B	26-OCT-2011
COAXIAL CABLE	SUHNER	N/A	N/A	19-SEP-2011

Remarks:-

N/A : Not Applicable or Not Available

The measurement instrumentation uncertainty would be taking into consideration on each of the test result

TEST REPORT N°: (5211)078-0202

Equipment Under Test [EUT]

Description of Sample:

Model Name: 1:20 Aston martin B/O
Model Number: KD0725A
Additional Model Name: 1:20 lamborghini B/O / 1:20 corvette B/O
Additional Model Number: KD0709A / KD0726A
Additional Model Information: Declare the Circuit, PCB layout and Electrical parts of the products are identical to the basic model. Except the shape and colour of shell.
Rating: 3Vd.c ("AA" size battery x 2)

Description of EUT Operation:

The Equipment Under Test (EUT) is a MAC DUE INTERNATIONAL LTD. of Radio Control toy. It is a 2 sticks and operating at 49.86MHz transmitter. The EUT continues to transmit while sticks are being pushed or pulled, Modulation by IC, and type is pulse modulation.

The transmitter has different control:

1. Left stick – control forward and backward
2. Right stick – control left and right

Antenna Requirement (Section 15.203)

The EUT is use of a screw-on type antenna. The antenna consists of 43cm long metal antenna. The antenna connector is custom-made and not be able to found in the market. It also cannot be replaced with other antenna other then the one bundled inside the package. The requirements of S15.203 are met. There are no deviations or exceptions to the specifications.

Photo of Antenna



TEST REPORT N°: (5211)078-0202

Radiated Emissions (Fundamental)

Test Requirement: FCC Part 15 Section 15.235
Test Method: ANSI C63.4
Test Date(s): 2011-03-23
Temperature: 15.0 °C
Humidity: 63.0 %
Atmospheric Pressure: 101.3 kPa
Mode of Operation: Transmission mode
Tested Voltage: 3Vd.c. ("AA" size battery x 2)

Test Procedure:

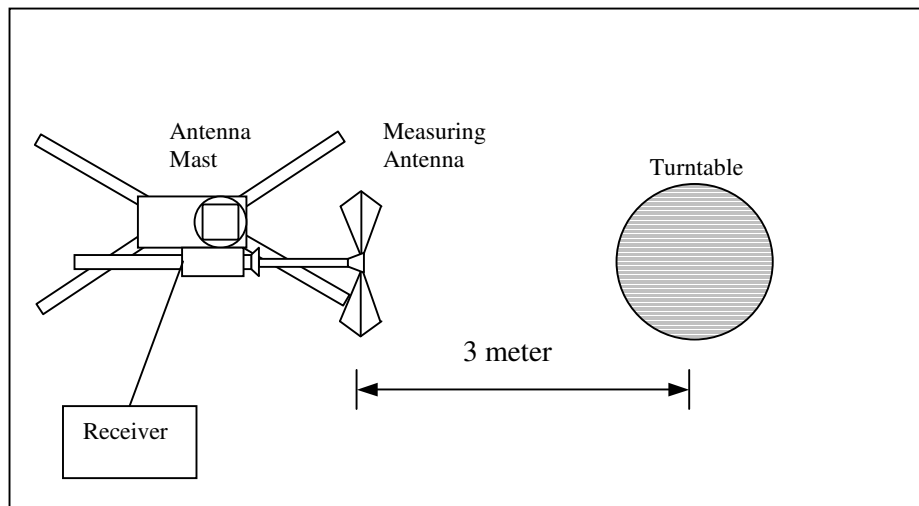
Radiated emissions measurements are investigated and taken pursuant to the procedures of ANSI C63.4 – 2003.

The equipment under test (EUT) was placed on a non-conductive turntable with dimensions of 1.5m x 1m and 0.8m high above the ground. 3m from the EUT, a broadband antenna mounting on the mast received the signal strength. During the test, each emission was maximized by: having the EUT continuously working, investigated all operating modes, rotated about all 3 axis (X, Y & Z) and considered typical configuration to obtain worst position, manipulating interconnecting cables. For battery operated equipment, the equipment tests shall be performed using new battery. The turntable was rotated to maximize the emission level. The antenna was then moving along the mast from 1m up to 4m until no more higher value was found. Both horizontal and vertical polarization of the antenna were placed and investigated.

For below 30MHz, a loop antenna with its vertical plane is placed 3m from the EUT and rotated about its vertical axis for maximum response at each azimuth about the EUT. And the centre of the loop shall be 1m above the ground.

Location: The Roof, Westin Centre, 26 Hung To Road, Kwun Tong, Kowloon, Hong Kong

Test Setup: Open Area Test Site



TEST REPORT N^o: (5211)078-0202

Limits for Field Strength of Fundamental Emissions [FCC 47CFR 15.235]:

Frequency Range of Fundamental [MHz]	Field Strength of Fundamental Emission [Peak] [μV/m]	Field Strength of Fundamental Emission [Average] [μV/m]
49.82 – 49.90	100,000 (100 dBμV/m)	10,000 (80 dBμV/m)

Measurement Data

Test Result of (Transmission mode): PASS

Detection mode: Peak

Frequency (MHz)	Polarity (H/V) and degree	Antenna Factor and Cable Loss (dB/m)	Field Strength at 3m (dBμV/m)	Limit at 3m (dBμV/m)	Margin (dB)
49.86	V	7.8	56.7	100	-43.3

Detection mode: #Average

Frequency (MHz)	Polarity (H/V) and degree	Antenna Factor and Cable Loss (dB/m)	Field Strength at 3m (dBμV/m)	Limit at 3m (dBμV/m)	Margin (dB)
49.86	V	7.8	**52.7	80.0	-27.3

For pulse modulated devices and using measuring equipment employing a peak detection mode, properly adjusted for such factor as pulse desensitisation.

**Duty Cycle Correction = $20\log(0.631) = -4.0\text{dB}$

Note: Field Strength includes Antenna Factor and Cable Loss.

Receiver setting: RBW = 100KHz
VBW = 300KHz

TEST REPORT N°: (5211)078-0202

Radiated Emissions (9kHz – 1GHz)

Test Requirement: FCC Part 15 Section 15.209
 Test Method: ANSI C63.4
 Test Date(s): 2011-03-23
 Temperature: 15.0 °C
 Humidity: 63.0 %
 Atmospheric Pressure: 101.3 kPa
 Mode of Operation: Transmission mode
 Tested Voltage: 3Vd.c. ("AA" size battery x 2)

Limits for Radiated Emissions [FCC 47 CFR 15.209]:

Frequency Range [MHz]	Quasi-Peak Limits [μV/m]
1.705-30	300
30-88	100
88-216	150
216-960	200
Above960	500

Measurement Data

Test Result of (Transmission mode): PASS

Detection mode: Quasi-Peak

Frequency (MHz)	Polarity (H/V)	Antenna Factor and Cable Loss (dB/m)	Field Strength at 3m (dBμV/m)	Limit at 3m (dBμV/m)	Margin (dB)
149.56	V	10.9	23.1	43.5	-20.4
199.44	H	10.0	30.4	43.5	-13.1
249.30	H	13.5	30.5	46.0	-15.5
299.16	H	14.4	28.6	46.0	-17.4
349.02	H	15.2	31.7	46.0	-14.3
398.88	H	17.1	29.9	46.0	-16.1
448.74	H	17.5	31.4	46.0	-14.6
498.60	H	18.6	31.8	46.0	-14.2
548.46	H	20.2	30.7	46.0	-15.3
598.32	H	19.6	32.2	46.0	-13.8

Note: Field Strength includes Antenna Factor and Cable Loss.

Receiver setting: RBW = 120KHz
 VBW = 120KHz



TEST REPORT N°: (5211)078-0202

26dB Bandwidth of Fundamental Emission

Test Requirement: FCC 47 CFR 15.235
Test Method: ANSI C63.4:2003 (Section 13.1.7)
Test Date(s): 2011-03-23
Temperature: 15.0 °C
Humidity: 63.0 %
Atmospheric Pressure: 101.3 kPa
Mode of Operation: Transmission mode
Tested Voltage: 3Vd.c. ("AA" size battery x 2)

Test Method:

The bandwidth is measured at an amplitude level reduced from the reference level by a specified ratio. The reference level is the level of the highest amplitude signal observed from the transmitter at the fundamental frequency. Once the reference level is established, the equipment is conditioned with typical modulating signal to produce the worst-case (i.e. the widest) bandwidth.

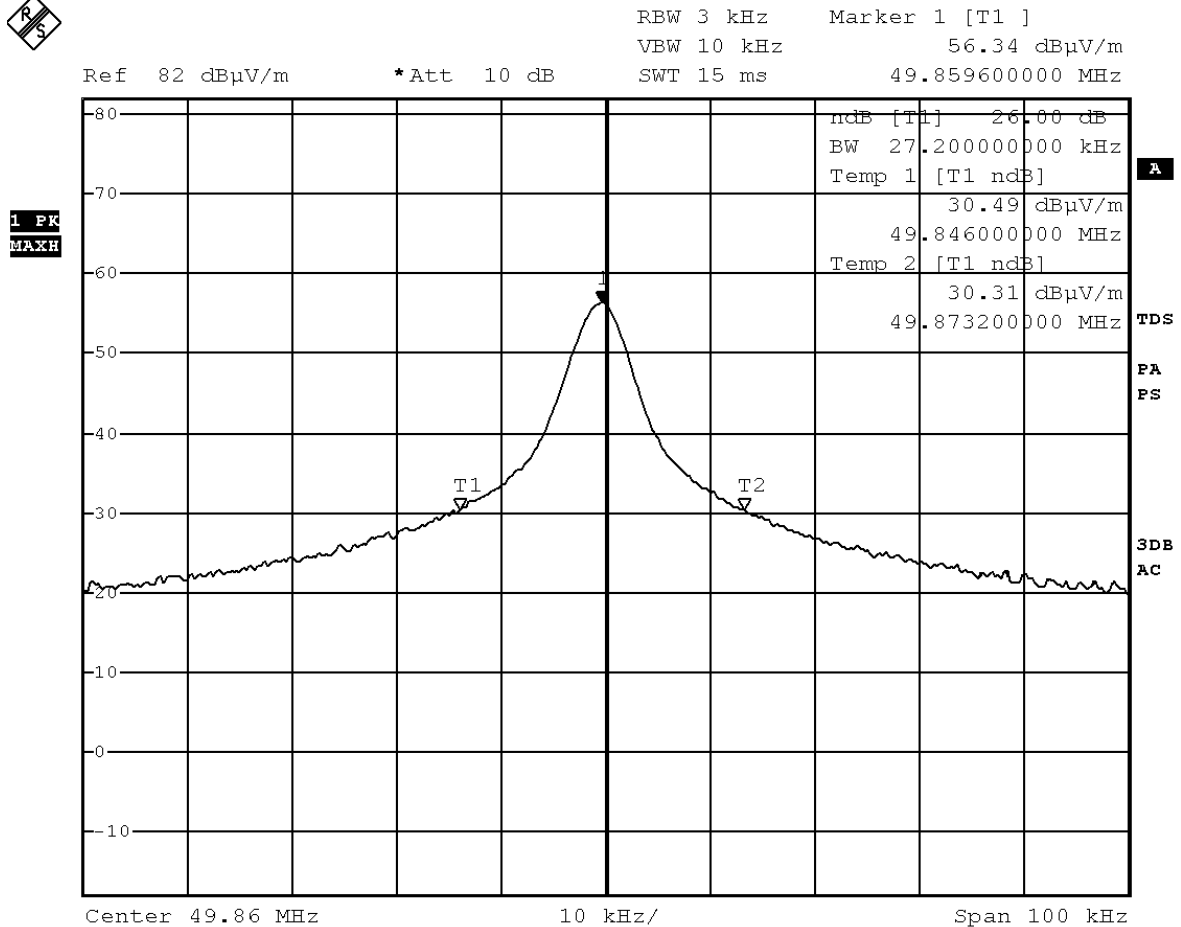
Limits for 26dB Bandwidth of Fundamental Emission:

Frequency [MHz]	20dB Bandwidth [kHz]	Limits [kHz]
49.8596	27.2	Within 49.82-49.90

TEST REPORT N°: (5211)078-0202

Measurement Data :

Test Result of 26dB Bandwidth of Fundamental Emission: PASS



Date: 23.MAR.2011 15:23:50



TEST REPORT N°: (5211)078-0202

Duty Cycle Correction During 100msec:

Each function key sends a different series of characters, but each packet period (16.8msec) never exceeds a series of 4 long (1.4msec) and 10 short (0.5msec) pulses. Assuming any combination of short or long pulses may be obtained due to encoding the worst case transmit duty cycle would be considered $[(4 \times 1.4\text{msec}) + (10 \times 0.5\text{msec})]$ per 16.8msec = 63.1% duty cycle. Figure A through C show the characteristics of the pulse train for one of these functions.

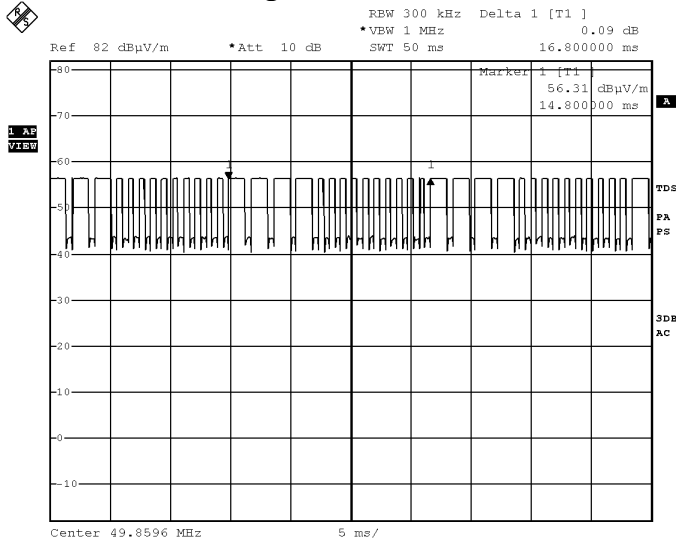
Remarks:

Duty Cycle Correction = $20\text{Log}(0.631) = -4.0\text{dB}$

The following figures [Figure A to Figure C] show the characteristics of the pulse train for one of these functions.

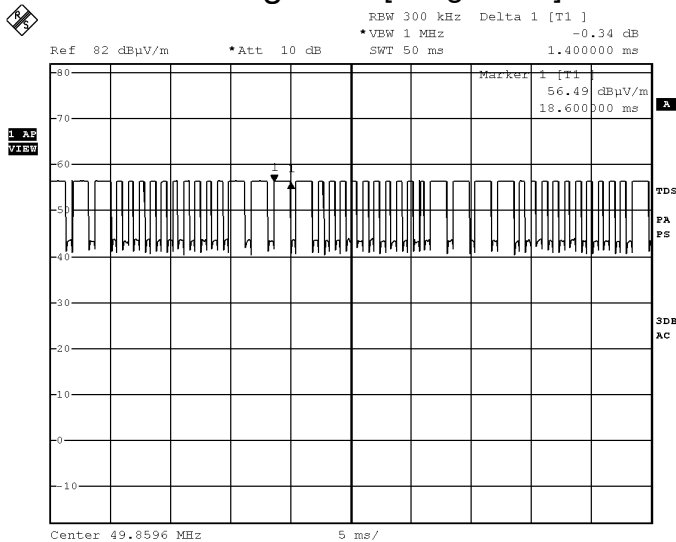
TEST REPORT N°: (5211)078-0202

Figure A [Pulse Train]



Date: 23.MAR.2011 15:25:46

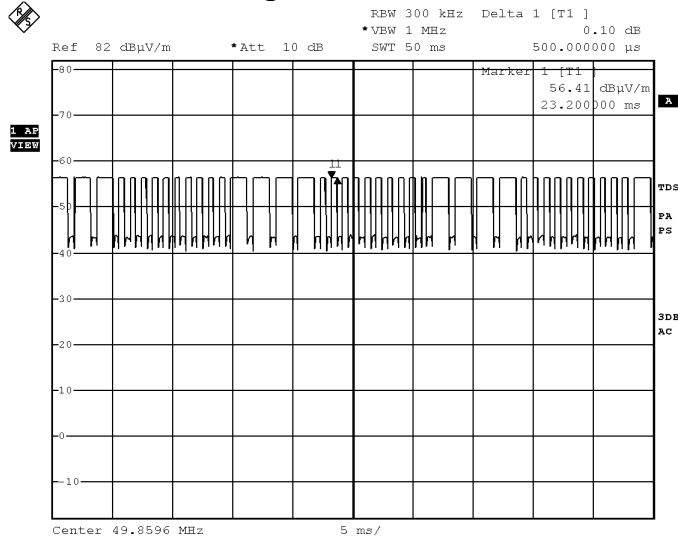
Figure B [Long Pulse]



Date: 23.MAR.2011 15:26:15

TEST REPORT N°: (5211)078-0202

Figure C [Short Pulse]



Date: 23.MAR.2011 15:26:34

TEST REPORT N°: (5211)078-0202

Photographs of EUT

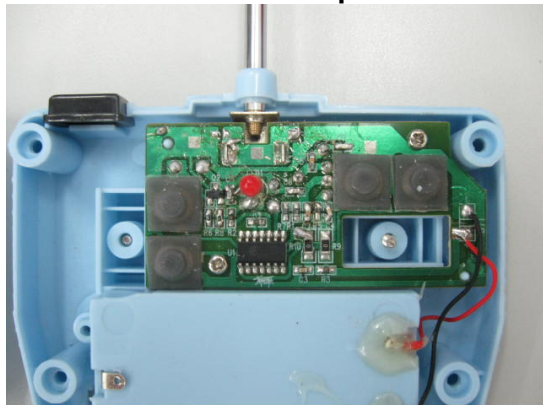
Front View of the product



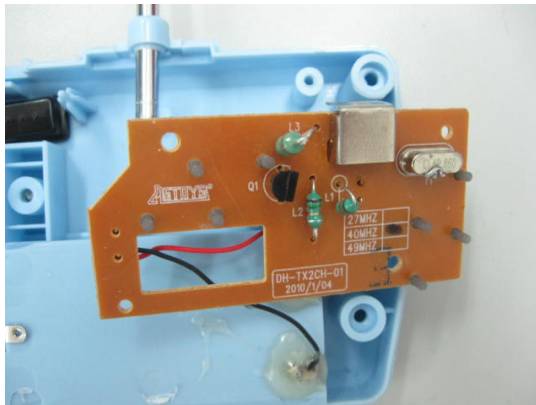
Rear View of the product



Inner Circuit Top View



Inner Circuit Bottom View

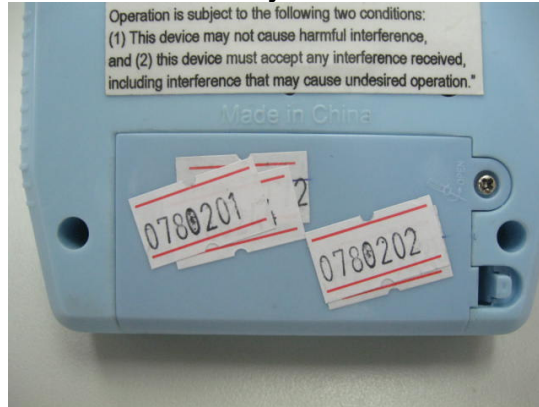


TEST REPORT N°: (5211)078-0202

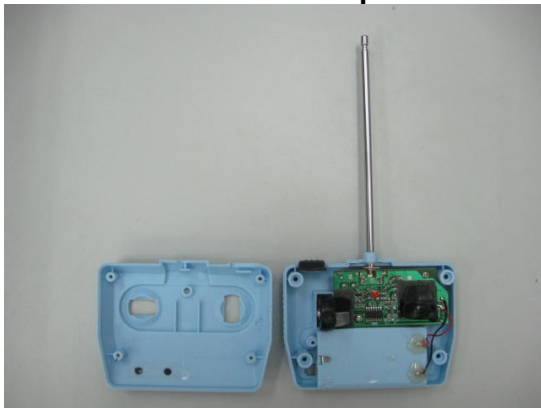
Battery compartment



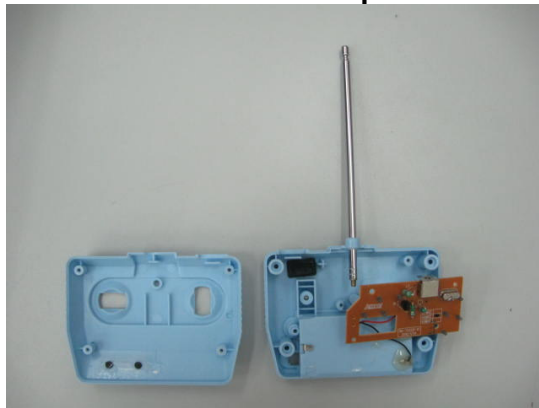
Battery Cover



Internal View of the product



Internal View of the product



Antenna



TEST REPORT N°: (5211)078-0202

Measurement of Radiated Emission Test Set Up



******* End of Report *******