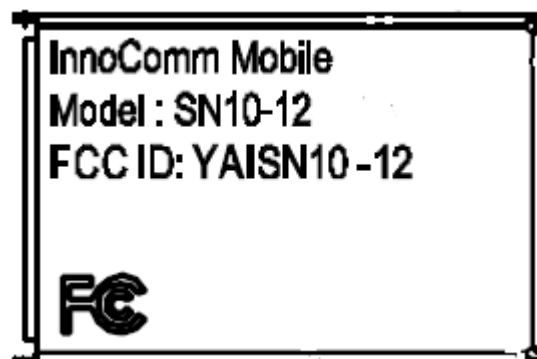
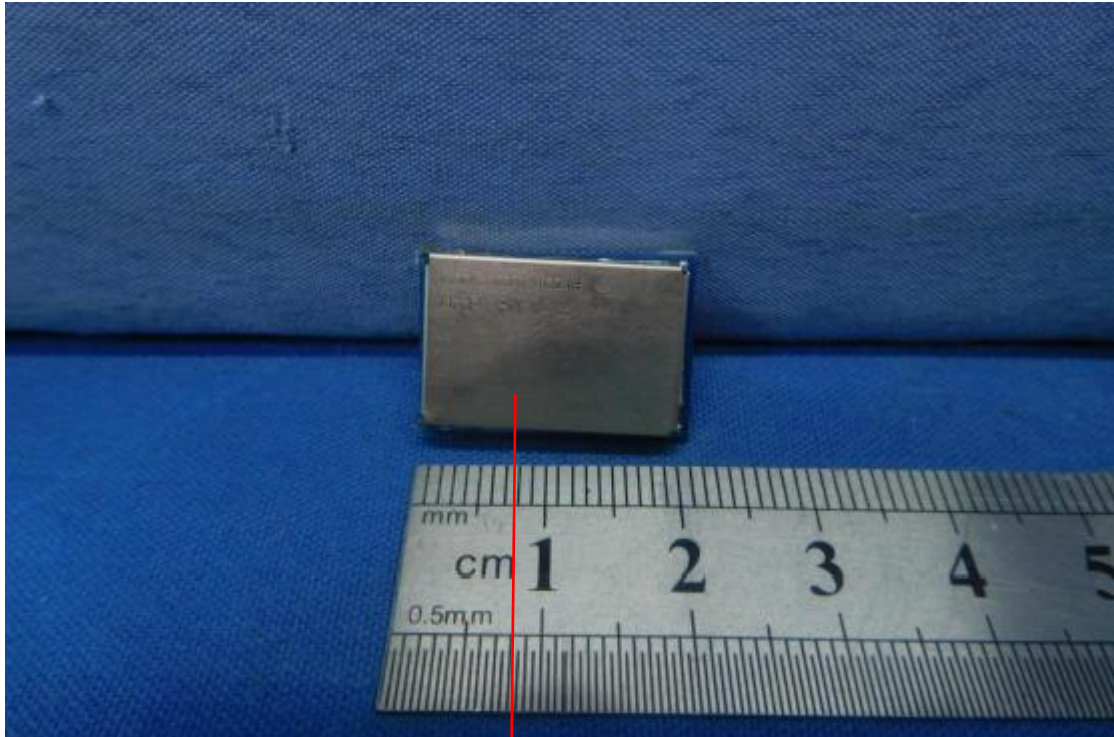


LABEL LOCATION

The label will be permanently affixed at a conspicuous location on the device.



FCC ID : YAI SN10-12

1 2 3 4 5 6

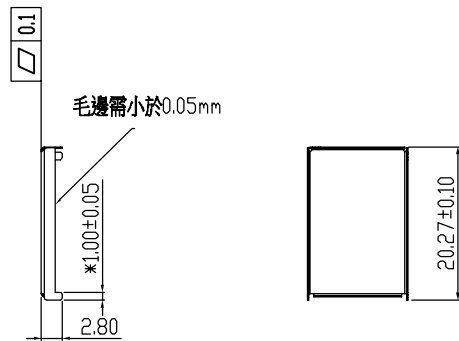
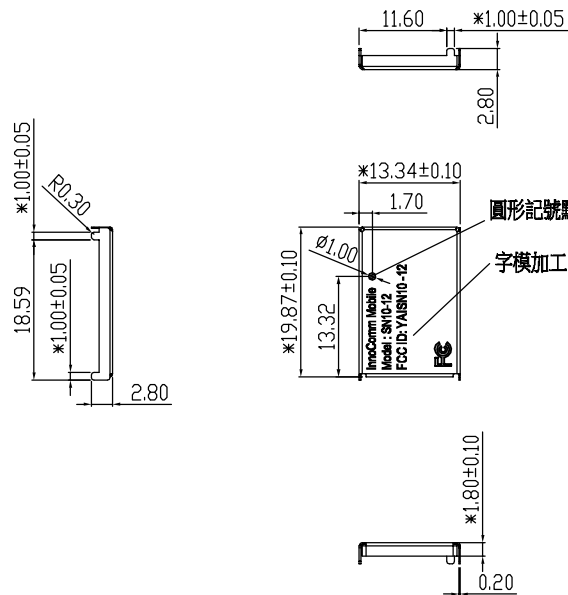
A

B

C

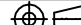
D

MODIFICATION			
VER	DESCRIPTION	DATE	ENGINEER
R01	Release	12/05'16	
R02	新增FCC ID & LOGO	03/22'17	



Note :

- 1.The general tolerance is $\pm 0.10\text{mm}$ / Angle is $\pm 1.0^\circ$
- 2."*" Critical dimensions.
- 3.Critical dimensions CPK measurement must above 1.33.
- 4.The thickness is 0.2mm
- 5.Material: 洋白銅
- 6.Burr 0.05mm max.
- 7.Need to comply with RoHS

InnoComm Mobile Technology Corp.										Drawn:		Willey Lee								
										Designed:		Willey Lee								
THESE DRAWINGS AND SPECIFICATIONS ARE THE PROPERTY OF INNOCOMM MOBILE TECHNOLOGY CORP. AND SHALL NOT BE REPRODUCED OR USED AS THE BASIS FOR THE MANUFACTURE OR DEVICES WITHOUT PERMISSION.										Checked:										
										Approved:										
DIMENSIONAL TOLERANCES±				V									Material:		THIRD ANGLE PROJECTION	DWG TITL: SMD SHIELDING CASE SN10 MODULE FOR SN10-12				
M1	M2	S1	S2	P1	P2	C														
0~6				0.05	0.10	0.15	0.20	0.05	0.10	0.5										
6~30				0.10	0.20	0.15	0.25	0.10	0.15	1.0										
30~80				0.15	0.25	0.20	0.30	0.20	0.40	2.0										
80~180				0.15	0.30	0.25	0.45	0.40	0.80	3.0										
180~315				0.20	0.50	0.40	0.60	0.60	1.20	3.0										
315~800				0.30	0.80	0.70	1.10	0.80	1.50	4.0										
SCALE		1.000		UNITS		MM		USED ON						Treatment:	A4 SIZE	DWG NO.: 109-CSN11-001NZ				REV. R02
																SHEET 1 OF 1				
DWING NAME				XXXXXXXXXXXX				DWG NO.		XXX-XXXXX-XXXXX				DATE		2017/03/22				

1 2 3 4 5 6