



TRANSFER MACHINE

Operation Manual

(Full Version)



Please read this operation manual carefully before
installing and using this product

Declaration

Thank you for choosing TOEC products.

Please read the information included in the product package thoroughly and carefully before using. TOEC will not be liable for any damages caused by your failure to follow the instructions herein or by any misoperation of this product due to your misunderstanding of this guide, but not including damages which occur during operation and installation caused by our qualified maintenance personnel.

TOEC has emended and checked this document carefully, but we do not ensure that there is no error or oversight.

TOEC devotes itself to improving products and promoting service quality. Thus, TOEC reserves the right to improve and modify the description and the software of this product without any future notice.

This operation manual is aimed at helping you to use TOEC products properly, but doesn't intend to do any description for the software and hardware configuration of this product. For the configuration, please check the related contract (if you have) or consult your dealer. The pictures in this document are for your reference purpose only. If any of them are different from the actual product, please ignore the pictures.

Contents

Safety Guide	1
NOTE	3
1. Overview	4
1.1. Packing List.....	4
1.2. Appearance.....	4
1.3. KEY and LED	5
1.4. USB Connection	6
1.5. Power Connection.....	6
1.6. Turning on the Machine	6
2. Load Paper	7
2.1. Paper Size and Type.....	7
2.2. Load Paper.....	7
3. Load Document.....	10
3.1. Document Size and Type.....	10
3.2. Load document	10
4. Install Printer Driver	11
4.1. Install Windows Printer Driver.....	11
4.2. Install MacOS Printer Driver	13
5. Use the Printer	17
5.1. Start the Printer	17
5.2. Print via USB from Windows.....	17
5.3. Print via USB from MacOS	18
6. Use the Copier	20
6.1. Start the Copier	20
6.2. Calibrate Image Sensor	20
6.3. Adjust scanner gamma and printer heat.....	21
6.4. Adjust dither pattern for halftone.....	22
7. LowPower Function	23
8. Overheat Function	23
9. Troubleshooting	24
9.1. Alarm Information.....	24
9.2. Problem and Solution.....	25
10. Specifications.....	26

Safety Guide

1. Please read all the instructions and keep this operation manual in a handy place for future reference.
2. Before cleaning the machine, please unplug the power adaptor, and cut off the power.
3. Do not use the machine near the water.
4. Do not place the machine in the unstable vehicle, on the unstable table or desk. Otherwise, the machine may not work normally or even fall, which will cause serious damage.
5. This machine has been equipped with a three-phase plug for power adapter, which has a grounding pin. This plug is only suitable for grounding type electrical outlet. This is a safety precaution. If the plug fails to fit, contact your electrician to change it. Do not remove or alter the grounding pin in any manner.
6. Do not put anything onto the power cord. Do not place the machine in an area where people might step on the power cord
7. If you use an extension cord with the machine, make sure the total ampere rating of the devices plugged into the extension cord does not exceed the cord's ampere rating.
8. Do not spill any liquid on the machine. Do not insert anything into the machine through the groove of the machine shell. Otherwise, these things may drop onto the circuit board and cause short-circuits. This may lead to fire or electric shock.
9. Use only a slightly damp cloth to clean the external of the machine. Do not clean the machine with benzene, alcohol, paint thinner or any corrosive, alkaline solvents. These solvents could

cause the damage of the shell of machine.

10. Don't try to fix the machine by yourself without any instructions. Please send all the parts needed to repair to the professional maintenance personnel

11. When the following conditions occur, please pull out the plug from socket, remove the battery, and send the machine to professional maintenance personnel:

- The power cord is damaged or worn
- There is liquid in the machine
- The machine is exposed to the rain or water
- The machine falls off or the shell is damaged

NOTE

1. This device complies with Part 15 of the FCC Rules.

Operation is subject to the following two conditions:

- (1) This device may not cause harmful interference, and
- (2) This device must accept any interference received, including interference that may cause undesired operation.

2. Changes or modifications not expressly approved by the party responsible for compliance could void the user's authority to operate the equipment.

NOTE: This equipment has been tested and found to comply with the limits for a Class B digital device, pursuant to Part 15 of the FCC Rules. These limits are designed to provide reasonable protection against harmful interference in a residential installation. This equipment generates, uses and can radiate radio frequency energy and, if not installed and used in accordance with the instructions, may cause harmful interference to radio communications. However, there is no guarantee that interference will not occur in a particular installation. If this equipment does cause harmful interference to radio or television reception, which can be determined by turning the equipment off and on, the user is encouraged to try to correct the interference by one or more of the following measures:

- - Reorient or relocate the receiving antenna.
- - Increase the separation between the equipment and receiver.
- - Connect the equipment into an outlet on a circuit different from that to which the receiver is connected.
- - Consult the dealer or an experienced radio/TV technician for help.

1. Overview

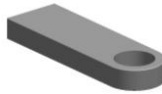
This section is an illustration of the appearance of the machine and the functions of every component.

1.1. Packing List

Please make sure all the following items contains in the package.



Machine

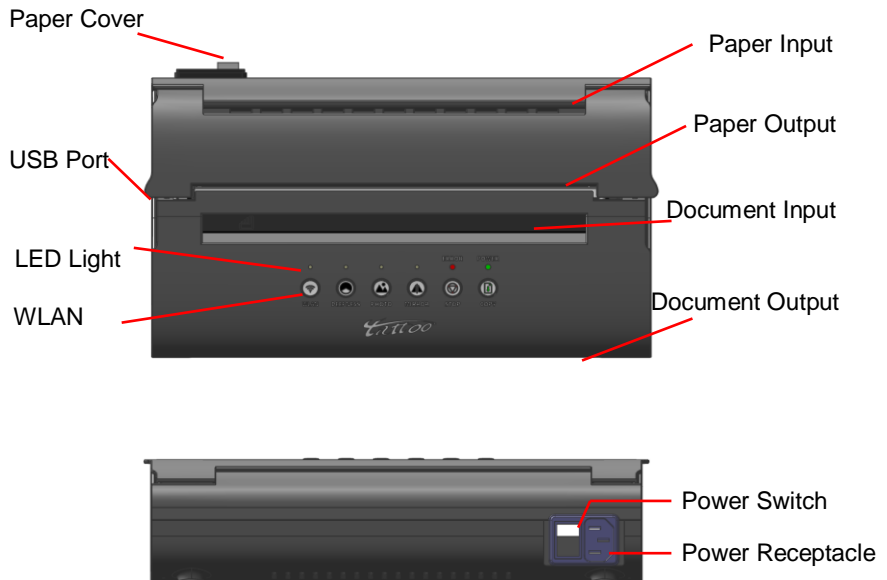


Installation U Disk



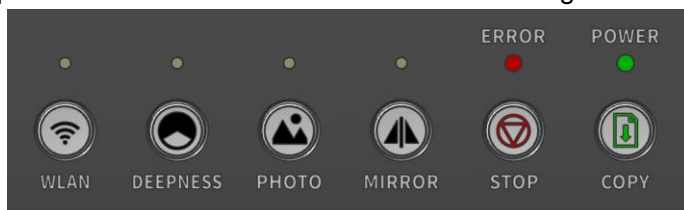
USB Cable

1.2. Appearance



1.3. KEY and LED

The panel consists of 6 KEY buttons and 6 LED Lights.



Please operate and understand this machine according to the following functions.

Symbol	KEY Function
WLAN	The key is set to enable or disable WLAN
DEEPNESS	The key is set to deepen the light documents.
PHOTO	The key shifts between PHOTO and TEXT scan mode. When the PHOTO mode works, the photo light goes on.
MIRROR	The key shifts between MIRROR and NORMAL print mode. When the MIRROR mode works, the mirror light goes on.
STOP	The key is to stop the copy function, or finish to print the current image.
COPY	The key is to start the copy function, or continue to print the next image.

Symbol	LED Function
POWER	The light indicates the machine is powered on and prepared for working.
ERROR	The light indicates something wrong occurred to the machine. When the printer is overheated, the light goes on.

After installing the driver, your computer will pop up more details and warnings of the machine for your convenience.

1.4. USB Connection

Using the WLAN and USB (TYPE-C) cable provided with the machine to connect the machine with computer. The machine can receive files from this computer and print them out.

1.5. Power Connection

Using a three-phase power cord prepared by user self to connect the machine with electricity supply [AC100~240V 50Hz/1.2A].

1.6. Turning on the Machine

Toggle the power switch from O to I to turn on the machine. After the power light goes on and one beep sound, the machine is prepared for working.

2. Load Paper

This section will describe the paper type and size, then introduce the method of loading paper.

2.1. Paper Size and Type

Note: using unsuitable paper will cause problems like image degradation, paper jam or over wearing of the printer, even will damage the printer. However, our warranty or service agreement doesn't cover damage like this. To get the best performance of this printer, we suggest you to use the type and the size of paper described in this section.

Paper Type	Tattoo Paper and Thermal Paper
Paper Size	MAX size is A4 (210mm×297mm)

Note: weight, ingredient, texture and humidity of the paper are all important factors which will influence the performance of the printer and the image quality.

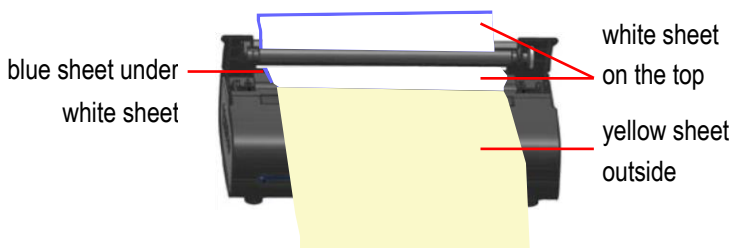
2.2. Load Paper

Feeding paper properly will effectively prevent paper jam and wrinkles, please make sure that there is no fault in using. When insert the paper into the printer, make sure the image needed to print faces down, and the paper need to be put in the right place manually by user self. Please try to vertically load the paper in the center of paper slot. Do not put it slant or near the side of slot. Be sure that the bottom of the paper is parallel with paper slot. Otherwise, the quality of printing image will degraded, and the paper will damaged.

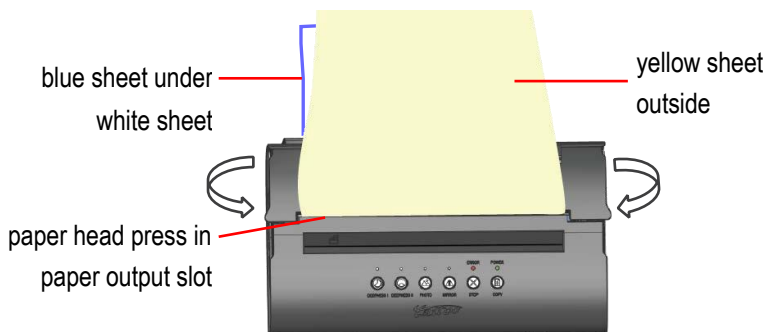
STEP1 : Open the paper cover



STEP2 : Take the Tattoo Paper for example. Keep the yellow sheet faces down, the white sheet faces top. Insert the tattoo paper into paper cover from input slot to output slot, until the paper head emerges from the output slot. Then pull out the yellow sheet from bottom, remain the blue sheet and the white sheet together.



STEP3 : Close the paper cover. Keep the entire yellow sheet outside. Then press and fix the head of blue sheet and white sheet together in the paper output slot.



Note:

Paper storage need to avoid high temperatures and humidity.

Before loading paper, do not fold, crease or wrinkle it.

Before putting the tattoo paper into the printer, please reserve the adhesive tape on the top of the paper, and remove the cover sheet below the adhesive tape (Do not tear the adhesive part on the top. Otherwise, the paper will be loosened and cannot be printed).

3. Load Document

This section will describe the document type and size, then introduce the method of loading document.

3.1. Document Size and Type

Note: using unsuitable document will cause problems like image degradation, doc jam or over wearing of the scanner, even will damage the scanner. However, our warranty or service agreement doesn't cover damage like this. To get the best performance of this scanner, we suggest you to use the type and the size of document described in this section.

Doc Type	art paper, coated paper, carbon paper
Doc Size	MAX size is A4 (210mm×297mm)

Note: transmittance, ingredient, pattern and humidity of the document are all important factors which will influence the performance of the scanner and the image quality.

3.2. Load document

Feeding document properly will effectively prevent doc jam and wrinkles, please make sure that there is no fault in using. When insert the document into the scanner, make sure the image needed to scan faces down, and the scanner will lead the document reaching to the right place automatically. Please try to vertically load the document in the center of scanner slot. Do not put it slant or near the side of slot. Be sure the bottom of the document is parallel with scanner slot. Otherwise, the quality of scanning image will degraded, and the document will damaged.

4. Install Printer Driver

Please log on your computer as administrator, for the driver installation requires the administrator access authority. Terminate all running applications, and close the security software. Before installing, use the matched USB cable to connect the printer with your computer, then turn on the printer. When installing, if a window "Found the new hardware wizard" pops up, just click "Cancel". If a warning "A problem occurred during hardware installation. Your new hardware may not work properly" appears, just close it.

Note: please do not to change the user name of computer after installing the driver. Otherwise, it will cause problems when uninstalling or reinstalling the driver.

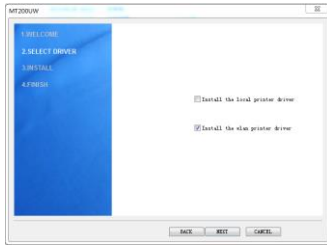
4.1. Install Windows Printer Driver

The Windows printer driver provides two printing modes: USB and WLAN. If you select a WLAN printer, ensure that the WLAN connection between the PC and the printer is normal before installing the driver.

1. Insert the installation U Disk into the computer's USB interface.

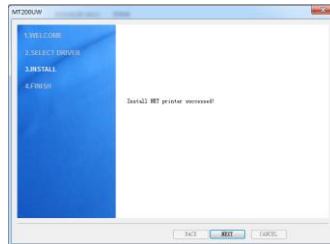
2. Read the files in the U Disk.
Double click [Setup.exe]. Then the window "Install/uninstall wizard" pops up, click [NEXT].



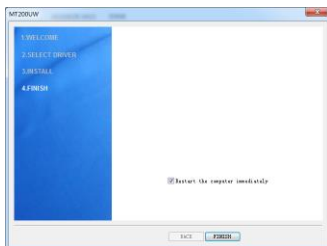


4. Click [NEXT] after the installation is successful.

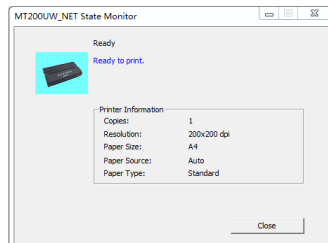
3. Check "Install local printer driver", then click [NEXT].
Note: you can install the USB driver or WKAN driver as required.



5. Click [NEXT] to finish the installation. (restart the computer is recommend)



6. Click the [State Monitor] button from [start menu] to view the current status of the printer.



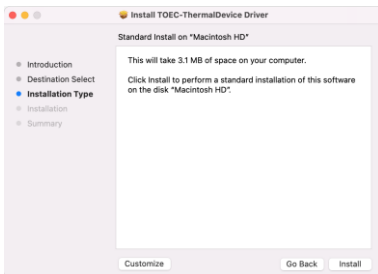
Note: If the driver installation failed, please try to turn off the antivirus software and related computer protection temporarily, then turn them on again after the driver installation completed.

4.2. Install Mac OS Printer Driver

The MAC printer driver supports USB and WLAN printing modes. If you select a WLAN printer, ensure that the WLAN is properly connected between the PC and the printer before installing the driver.

1. Insert the installation U Disk into the computer's USB interface.

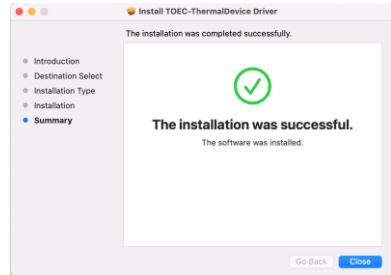
2. Read the files in the U Disk. Double click [MT200UW.pkg] corresponding to the OS version. Click [Continue].



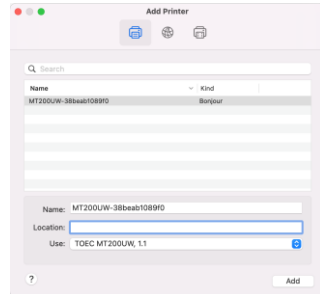
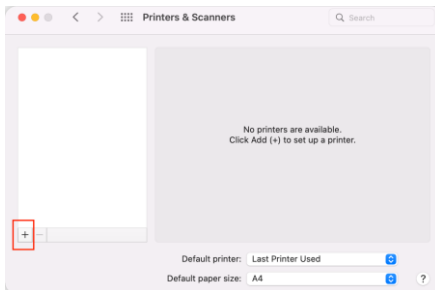
3. Make sure all contents of the license agreement, then click [Continue], [Agree] and [Install] to install the driver.

Due to different certificate issuance dates, a warning may pops up. This is not a problem. Please continue with the installation. If a verification window appears, please enter the password, and click [install software] or [OK].

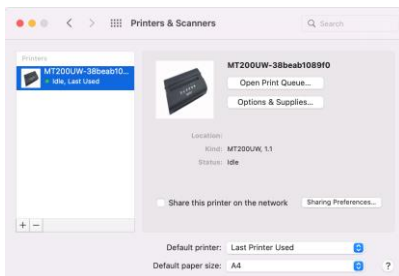
4. After the installation is completed, click [Close].



5. Click [System Preferences] from [Apple menu], and click [Printers & Scanners], then click [+] button and [Default] icon. Click name "TOEC MT200UW" to select printer, then click [Add] button to add printer.



PPD file will be installed in the following folder on the startup disk.
[Library] - [Printers] - [PPDs] - [Contents] - [Resources]
If the printer is automatically added, skip to step 6.



6. Click printer icon, then click [Options & Supplies] button

7. Click [State Monitor] icon from [Application] to view the current status of the printer.



4.3. External device printing

Users using external devices to print the mobile device operating system requirements of IOS9.0 and above, Android4.0 and above. Users need to download the corresponding mobile printing application on their mobile devices first.

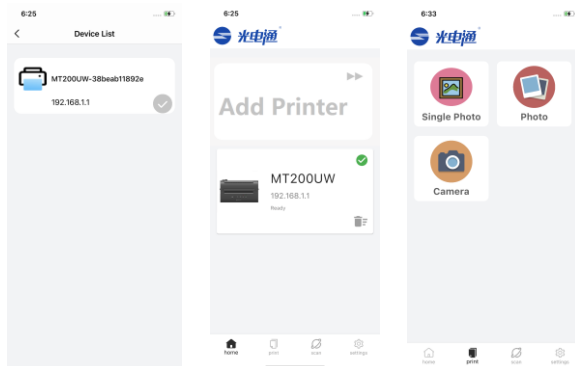


Search and download "TOEC Printer" APP from APP Store.



Scan the QR code on the left to download it.

After the installation is complete, open the application software, connect the mobile device to the printer through the WLAN, click" Quick Add Printer", select "WLAN hotspot mode", the application automatically searches for connected devices, and click the device of the corresponding model to add the device.



After the printer is successfully added, the home page of the APP will display the information of the added device, such as the device name, IP address, and device status.

After entering the APP, you can switch to "print" through the bottom TAB. The print function supports photograph printing, photo printing, print preview, and finally print according to the selected print parameters.

5. Use the Printer

This section will introduce how to print images from computer. Before printing, please read the Section One to Section Four carefully and install the driver of the printer.

5.1. Start the Printer

1. Make sure the USB connection is correct. (Section 1.4)
2. Make sure the power connection is correct. (Section 1.5)
3. Turn on the printer. (Section 1.6)
4. Connect the printer to PC via USB. Confirm the USB port has been identified correctly.
5. Install the driver of the printer. Confirm both the driver and state monitor work normally. (Section 4)
6. Insert the paper into the printer manually. Confirm the paper is Loaded in the right place. (Section 2)

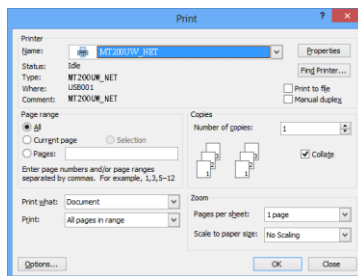
Note: please make sure to start the computer first, then the printer later, or it may lead to the printer unrecognizable by the computer. If so, please restart the printer or reinsert the USB cable.

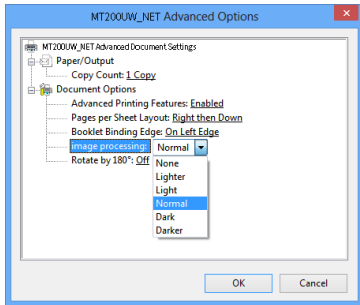
5.2. Print via USB from Windows

Take the Microsoft Word App in Windows OS as an example.

1. Open the file need to print, and select "Print" in the "File" menu.

2. In the "Print" dialog box, click the "Name" list and select "MT200UW".

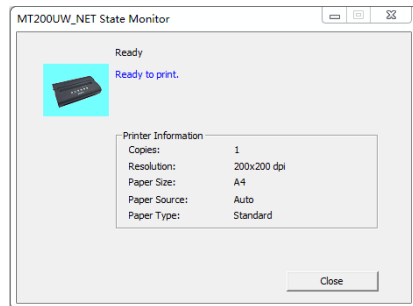




3. Click "Properties" button, select "advanced" option in the "Paper/Quality" tab, change the "Image Processing" item to effect the image deepness. "None" item represents no effect, other items will adjust the image deepness.

4. Click "Other Settings" tab. "Mirror Printing" item will flip the image horizontally.

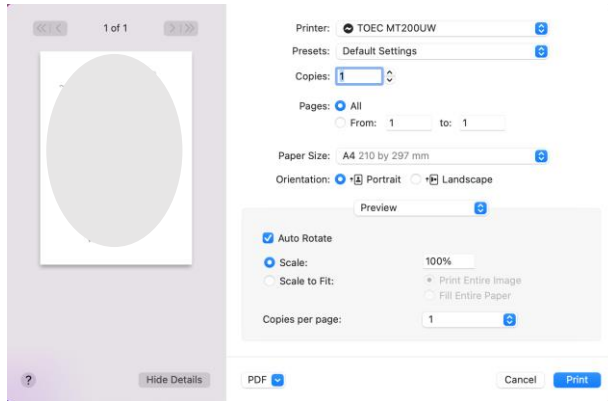
5. Setup the printing option and copies, then click "OK". The printer begins to print and the "Status Monitor" pops up on the computer.



6. If the current print job need to cancel, please press the "STOP" KEY on the printer's panel, or right click "Cancel" from computer's printer queue manager.

5.3. Print via USB from MacOS

1. Open the file need to print. Select printer "TOEC MT200UW".



2. The usage of Printer Features

Mirror Printing: Check it to flip the image horizontally.

Image Processing: There are 6 items under this menu.





"None" item represents no effect, other items will adjust the image deepness.

6. Use the Copier

This section will introduce how to copy images from document to paper. Before copying, please read the Section One to Section Three carefully.

6.1. Start the Copier

1. Power on the Copier according to Section 1.5 and Section 1.6.
2. Load paper according to Section 2.
3. Load document according to Section 3.
4. Select the appropriate copy mode by combination of "DEEPNESS", "PHOTO" and "MIRROR" KEY.

KEY COMBINATIONS		LIGHT PURE-BLACK IMAGE		DARK PURE-BLACK IMAGE	
PHOTO	OFF			OFF	
DEEPNESS	ON			OFF	
KEY COMBINATIONS		LIGHT GRAY-SCALE IMAGE		DARK GRAY-SCALE IMAGE	
PHOTO	ON			ON	
DEEPNESS	ON			OFF	

5. Press the "COPY" KEY to start copy.
6. If the current copy job need to cancel, please press the "STOP" KEY on the copier's panel.

6.2. Calibrate Image Sensor

The image sensor in the machine is sensitive to the sunlight exposure and naturally changes along with the temperature of the

surrounding environment over time. When there is a big difference in shade between the copied paper and the original document, please perform "calibration" in time.

The steps are as follows:

- ① Press the "STOP" KEY and hold for 3 seconds at least, the machine beeps a sound and all LED lights go on.
- ② Load a sheet of A4 smooth pure-white paper without any wrinkle or stain into the scanner, then Press the "MIRROR" KEY to perform the calibration.
- ③ The white paper is automatically fed during the calibration process, and completely ejected after the calibration finished.
- ④ Press the "STOP" KEY and hold for 3 seconds at least, the machine beeps a sound and all LED lights are restored.

6.3. Adjust scanner gamma and printer heat

The image sensor in the machine is sensitive to the reflectivity of different document material. Scanning gamma can adjust the luminance compensation. The TPH part in the machine is sensitive to the meltability of tattoo paper material. Printing heat can adjust the heat timing. You can adjust the scanning gamma and printing heat of the machine according to the actual needs.

The steps are as follows:

- ① Press the "STOP" KEY and hold for 3 seconds at least, the machine beeps a sound and all LED lights go on.
- ② Press the "COPY" KEY to adjust the scanning gamma with different beep sounds. The lightest beep 1 sound and the darkest beep 5 sounds.
- ③ Press the "STOP" KEY to adjust the printing heat with different beep sounds. The lightest beep 1 sound and the darkest beep 5 sounds.
- ④ Press the "STOP" KEY and hold for 3 seconds at least, the

machine beeps a sound and all LED lights are restored.

6.4. Adjust dither pattern for halftone

The dither pattern has an effect in photo mode during image process of halftone. You can adjust the density of dither pattern according to the actual needs.

The steps are as follows:

- ① Press the "STOP" KEY and hold for 3 seconds at least, the machine beeps a sound and all LED lights go on.
- ② Press the "Deepness" KEY to adjust the density of dither pattern with different beep sounds. The lower beep 1 sounds and the higher beep 2 sound.

Tattoo Paper suggest lower density.

Thermal Paper suggest higher density.

- ③ Press the "STOP" KEY and hold for 3 seconds at least, the machine beeps a sound and all LED lights are restored.

6.5. Enabling or Disabling WLAN

Press the [WLAN] button to switch WLAN status.

- ① When the LED light is on, the WLAN is enabled;
- ② When the LED light is off, the WLAN is disabled;

7. LowPower Function

When there is no document feeding, no data receiving and no operation, the machine will be in low-power mode to reduce the power consumption. At this moment, only KEYS and LEDs are working. However, the job data can still be received if the machine is connected with the computer via USB. The computer can also awake the machine automatically by sending a job. Then the machine begins to work normally.

8. Overheat Function

When the machine has been used for a long time, or a gray-scale image close to pure-black is copying, an Overheat Alarm may occur and the current job will be suspend temporarily. At this moment, the machine will beep alarm sound continuously, and its internal temperature can cool down naturally. After a moment, the machine will turn off the alarm sound, and resume the rest jobs automatically if its internal temperature is cool enough.

Note: when use the machine at the high altitude, the machine overheating may occur more frequently due to a lower air density available to cool the machine.

9. Troubleshooting

This section will introduce the alarm information and the suggested solution for problem.

9.1. Alarm Information

Alarm on PC	Reason	Suggested Solution
No paper	There is no paper in the printer	Please put the paper in the printer
Insufficient memory	The memory is full of stored files.	Cancel the current print job. Printing the stored files first.
Communication error	The USB port is not detected	Reinsert USB cable Restart the machine Restart the computer
Overheating	The temperature of the machine is too hot	Wait for a moment to print until the error light turns off

9.2. Problem and Solution

Problem	Suggested Solution
Breakdown of machine and failure of keys	<ul style="list-style-type: none">- Check that whether the power cord of the machine is connected or not;- Check that whether the power switch of the machine is turned on or not;- Restart the machine after power off 30 seconds.- Please contact the serviceman if the problem still exists.
The machine can't print documents	<ul style="list-style-type: none">- Check the USB cable is connected correctly or not;- Reinsert USB cable or restart the machine.- Check that whether the machine is in idle state or not;- Please contact the serviceman if the problem still exists.
The USB is off-line	<ul style="list-style-type: none">- Ditto;
The document can't be led to the right place	<ul style="list-style-type: none">- Reinsert the doc more deeper with a little force;- Check the size or thickness of doc is suitable or not;- Please contact the serviceman if the problem still exists.
The paper can't come out	<ul style="list-style-type: none">- If the paper jam occurs, please open the paper cover to pull out the jammed paper;- Check the size or thickness of paper is suitable or not;- Please contact the serviceman if the problem still exists.
The image on the printed paper is too light or too deep	<ul style="list-style-type: none">- Adjust scanner gamma and printer heat.

10. Specifications

Item	Description
Speed	48s/page
Resolution	200dpi×200dpi
Port	USB2.0
Driver Language	GDI
Printer Sensor	TPH
Paper Feeding	manual feeding
Paper Size	Maximum A4 (210mm×297mm)
Paper Type	tattoo paper, thermal paper
Scanner Sensor	CIS
Document Feeding	automatic feeding
Document Size	Maximum A4 (210mm×297mm)
Document Type	art paper, coated paper, carbon paper
Consumables	None
Operating System	Windows XP/7/8/10/11 MacOS 10.9-12.3 IOS (12/13/14/15) Android (10/11/12)
Power Supply	AC100~240V 50Hz/1.2A
Power Consumption	Maximum 90W
Noise LpA	Maximum 58dB(A)
Dimension of machine	293mm(W)×171mm(D)×72mm(H)
Weight of machine	1.20Kg
Operating temperature	5°C ~ 35°C
Operating humidity	20% ~ 80%
Storage temperature	-25°C ~ 40°C
Storage humidity	5% ~ 90%
Atmospheric pressure	86kPa ~ 106kPa

FCC Caution.

This device complies with part 15 of the FCC Rules. Operation is subject to the following two conditions:

- (1) This device may not cause harmful interference, and
- (2) this device must accept any interference received, including interference that may cause undesired operation.

Any Changes or modifications not expressly approved by the party responsible for compliance could void the user's authority to operate the equipment.

Note: This equipment has been tested and found to comply with the limits for a Class B digital device, pursuant to part 15 of the FCC Rules. These limits are designed to provide reasonable protection against harmful interference in a residential installation. This equipment generates uses and can radiate radio frequency energy and, if not installed and used in accordance with the instructions, may cause harmful interference to radio communications. However, there is no guarantee that interference will not occur in a particular installation. If this equipment does cause harmful interference to radio or television reception, which can be determined by turning the equipment off and on, the user is encouraged to try to correct the interference by one or more of the following measures:

- Reorient or relocate the receiving antenna.
- Increase the separation between the equipment and receiver.
- Connect the equipment into an outlet on a circuit different from that to which the receiver is connected.
- Consult the dealer or an experienced radio/TV technician for help.

This equipment complies with FCC radiation exposure limits set forth for an uncontrolled environment. This equipment should be installed and operated with minimum distance 20cm between the radiator & your body.



TOEC Technology Co., Ltd.

Address: No.6 Taishan Road
Hexi District Tianjin China

Hotline of Sales: 022-28262631
022-28260121
022-28268291

Hotline of After-sales Service: 022-28268471
17694866880 (7*24h)

Free Service Hotline: 400-615-1880
800-818-8080

Fax: 022-28261058

E-mail of Sales: marketing.department@toec.com

E-mail of After-sales Service: afterservice@toec.com

Website: <http://www.toec.com>

Version: June 2023, First Edition