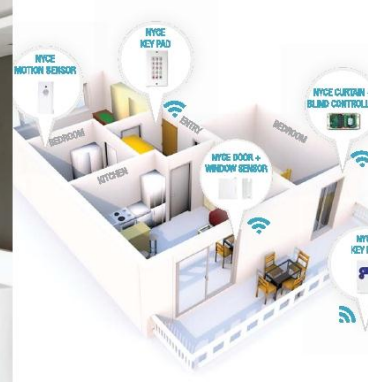




**NYCE  
CONTROL**

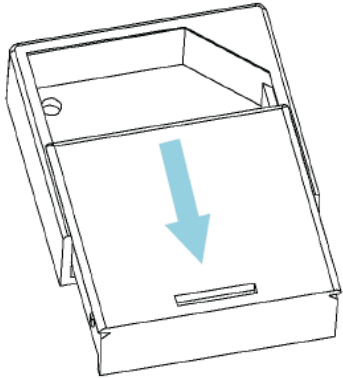
## How to Install a NYCE Control Garage Door Sensor



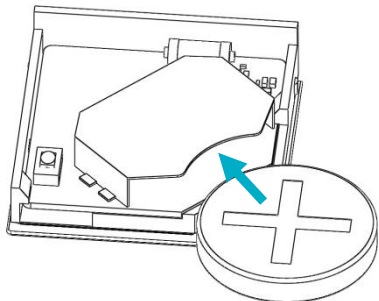
# INTRODUCING THE SMALLEST ZIGBEE HOME AUTOMATION DEVICES IN THE WORLD



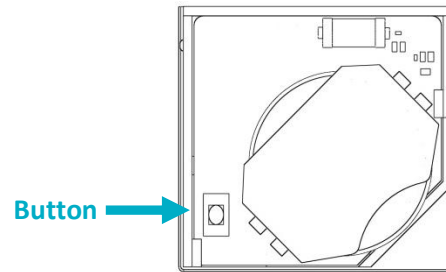
### STEP 1: INSTALL BATTERY



Slide open the Garage Door Sensor's housing. Install the CR2032 battery in the top part as shown below.



### STEP 2: INSTALL DRIVER + IDENTIFY



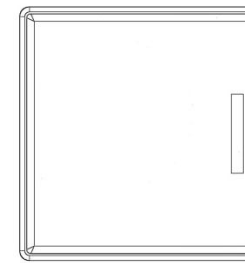
Install the Sensor's driver:

- **GarageSensor\_zb\_nyce\_3014.c4i**
- Download driver from: [www.nycecontrol.com/support](http://www.nycecontrol.com/support) or from Control4's online database
- Copy to My Documents\Control4\Drivers
- Open Composer and add the device to the project (Manufacturer = "Nyce Control")
- Identify the Sensor by pressing the button 4 times while its identify window is open.
- The Sensor's 64-bit address should appear in the identify window's text box.
- **Add a Generic Garage Door Driver to the project "My Drivers\Sensors\Garage Door (Sensor)" and bind the two drivers together in Connections -> Control/AV**

### STEP 3: PROPER LOCATION / ORIENTATION OF SENSOR

- Mount the Garage Door Sensor on a horizontal pane of the garage door. The Sensor should be mounted on the bottom pane (fully closed) or top pane (fully open), depending on the desired operation.
- A pair of sensors can be used on both bottom and top panes for full garage door reporting, if desired.
- Ensure that the Garage Door Sensor is oriented with the bar symbol vertically, parallel to the edge of the garage door, as shown in the diagram below on the left.

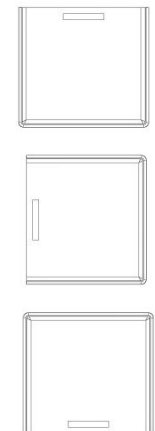
#### CORRECT ORIENTATION



Garage Door Sensor

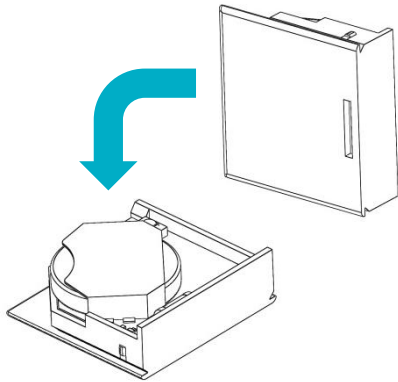
Right edge of Garage Door

#### INCORRECT ALIGNMENT



Right edge of Garage Door

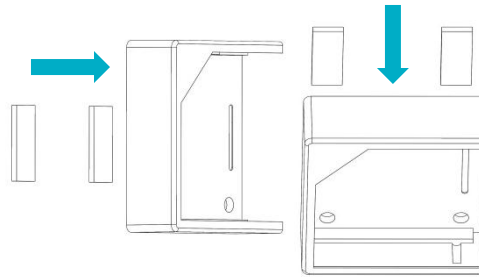
## STEP 4: TEST THE SENSOR



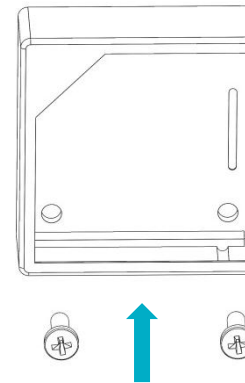
- Test the Sensor from the desired location before permanently installing it by flipping it forward as shown above, this is the same action as the garage door opening.
- Check that the icon in Navigator's or Composer's List View updates with a "Closed" and "Open" icon.

## STEP 5: INSTALL THE GARAGE DOOR SENSOR

### OPTION 1: DOUBLE-SIDED TAPE



### OPTION 2: #2 SCREWS



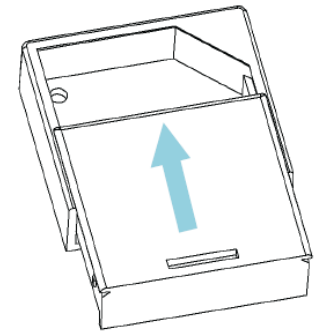
- Using the methods shown above, install the Garage Door Sensor bottom housing on a clean surface using the double-sided tape or the two #2 screws provided.

#### Notes:

- Installation on metal surfaces can reduce transmission range.
- Ensure that the device is installed in a dry location away from water, moisture and rain.



## STEP 6: CLOSE COVER



- Once you have installed the bottom housing and confirmed the Sensor is properly communicating, close the Sensor housing as shown in the diagram above.

## PRODUCT FUNCTION + LED INDICATORS

Button Press	LED w/Press	Action	LED Action	Description
2 Times	● ●	Network Status	● ● ● ●	Not Joined Joined
4 Times	● ● ● ●	Network Join	● ● ● ●	Join Successful Join Unsuccessful
6 Times	● ● ● ● ● ●	Network Leave	● ●	Leave Successful
10 Times	● ● ● ● ● ● ● ● ● ● ● ●	Restore Defaults	● ● ● ● ● ● ● ●	Leave (if joined) and Defaults Restored
		No Action	● ● ● ● ● ●	Unsupported Command Network Error, retry Device Busy

