

Internal Photos

The EKT-3000 circuit boards are a 2-layer board with ground floods on the outer layers. Most all components mounted on the top side of the boards. See Figures 7, 8, and 9 for images.

Fig 7 – EKT-3000 circuit boards.

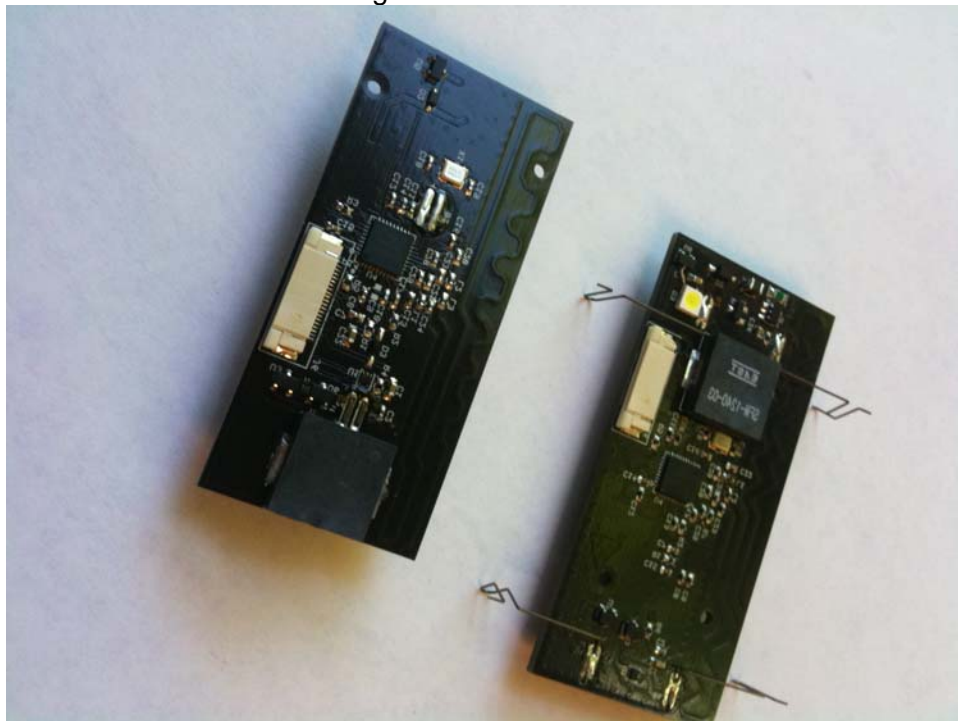


Fig 7 – Top side of EKT-3000 circuit boards

ADDRESS 425 WESTLAKE AVE N SEATTLE, WA. 98109
PHONE 206.297.7200 FAX 206.297.7201
WEB WWW.PRODUCTCREATIONSTUDIO.COM

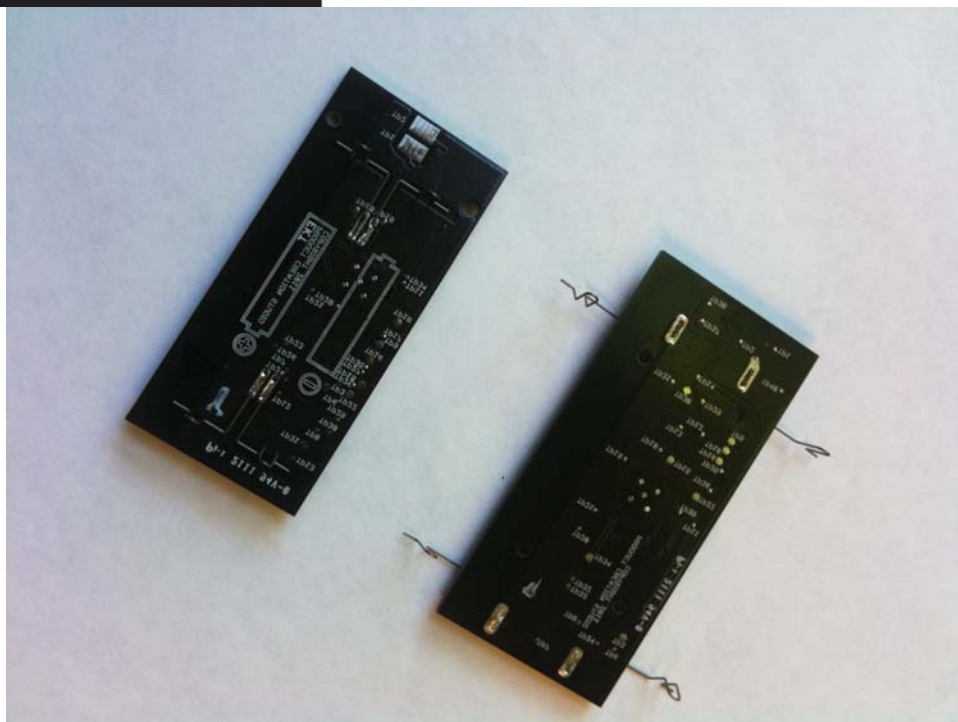
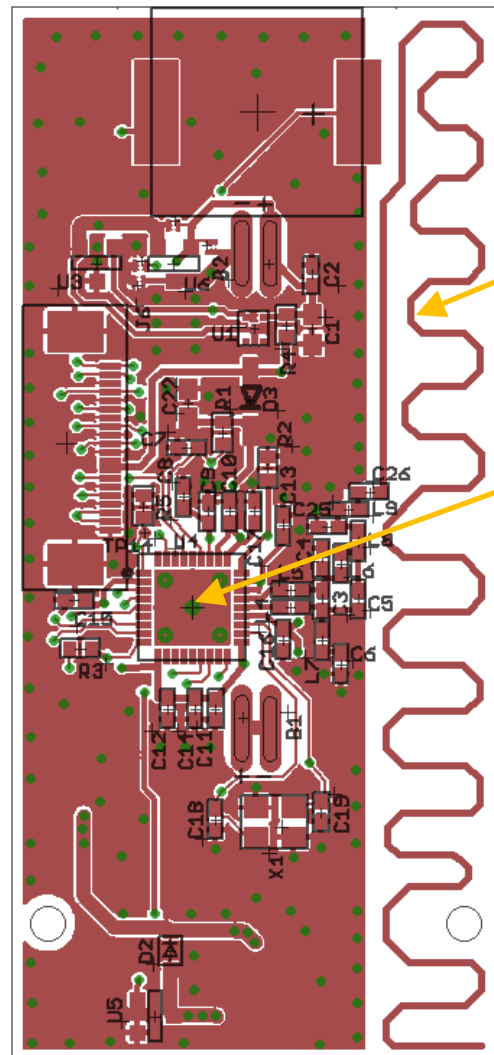
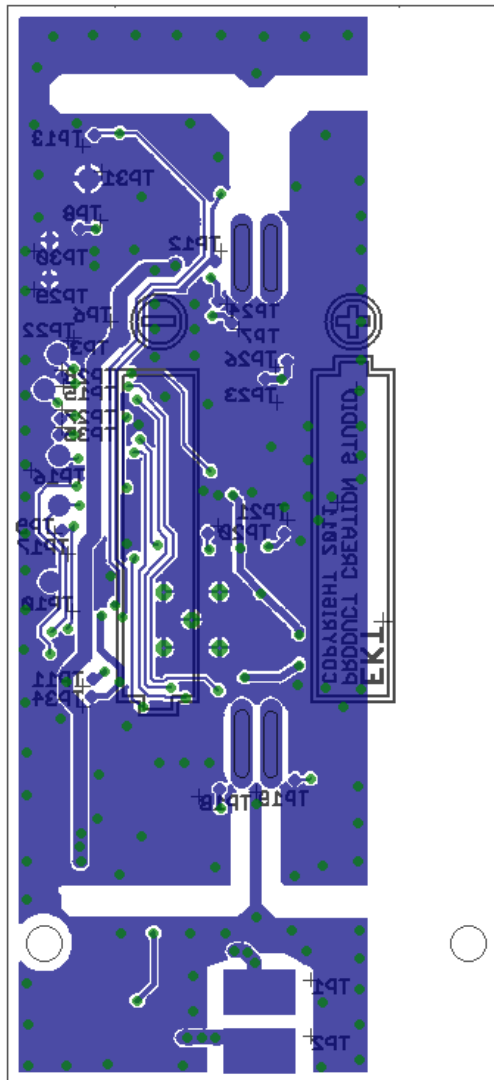


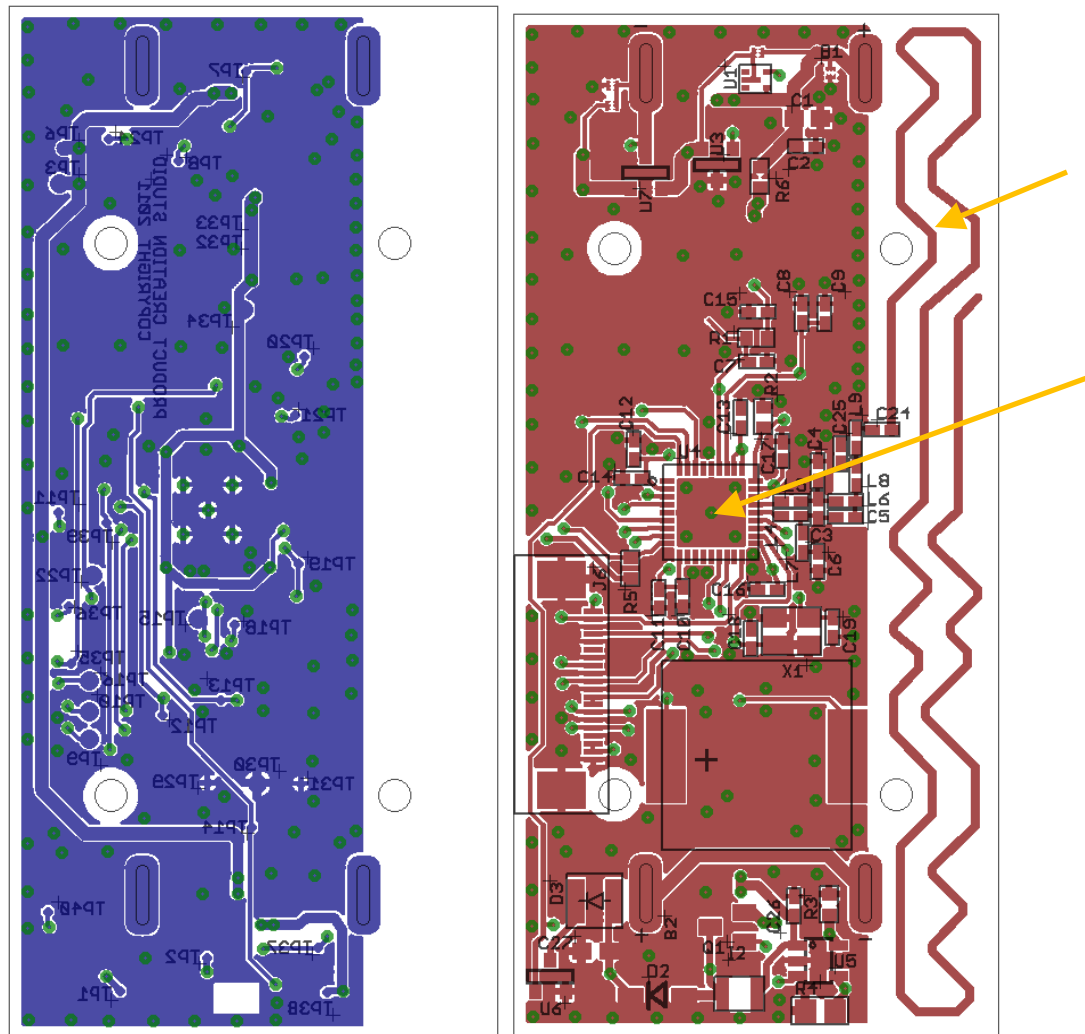
Fig 8 – Bottom Side of EKT-3000 circuit boards

ADDRESS 425 WESTLAKE AVE N SEATTLE, WA. 98109
PHONE 206.297.7200 **FAX** 206.297.7201
WEB WWW.PRODUCTCREATIONSTUDIO.COM

Included here are CAD snap shot of the board. The boards are hard to see as they are small and the LPI treatment on the boards is black, making it hard to see the radio and integrated antenna:



Belt Unit: The antenna is the serpentine trace. The radio is the IC U4 as shown.



Key Unit: The antenna is the serpentine trace. The radio is the IC U4 as shown.

ADDRESS 425 WESTLAKE AVE N SEATTLE, WA. 98109
PHONE 206.297.7200 FAX 206.297.7201
WEB WWW.PRODUCTCREATIONSTUDIO.COM