

Figure 3  
PCB of the EUT-Front View

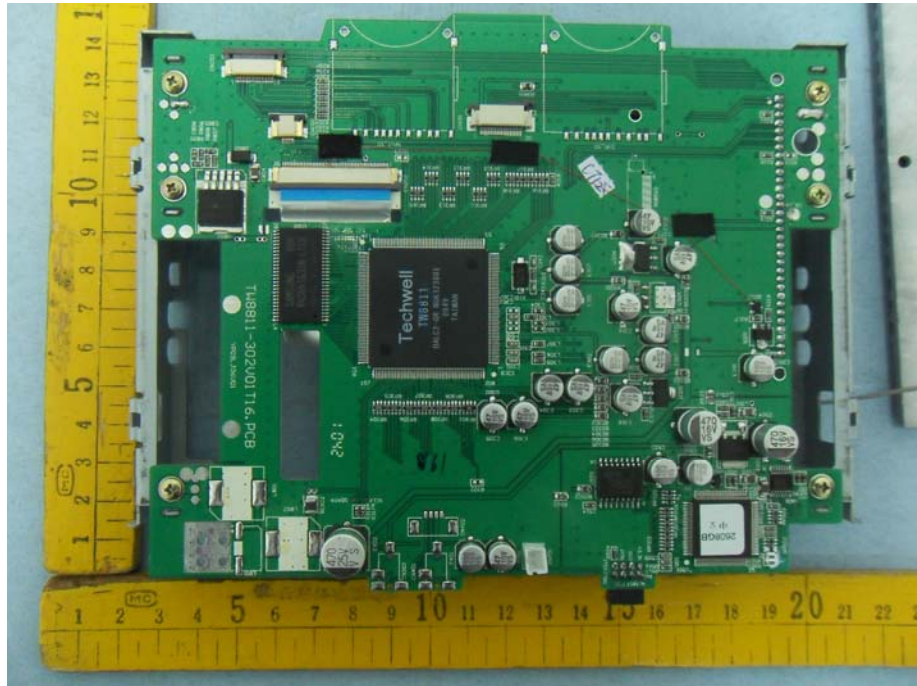


Figure 4  
PCB of the EUT-Back View

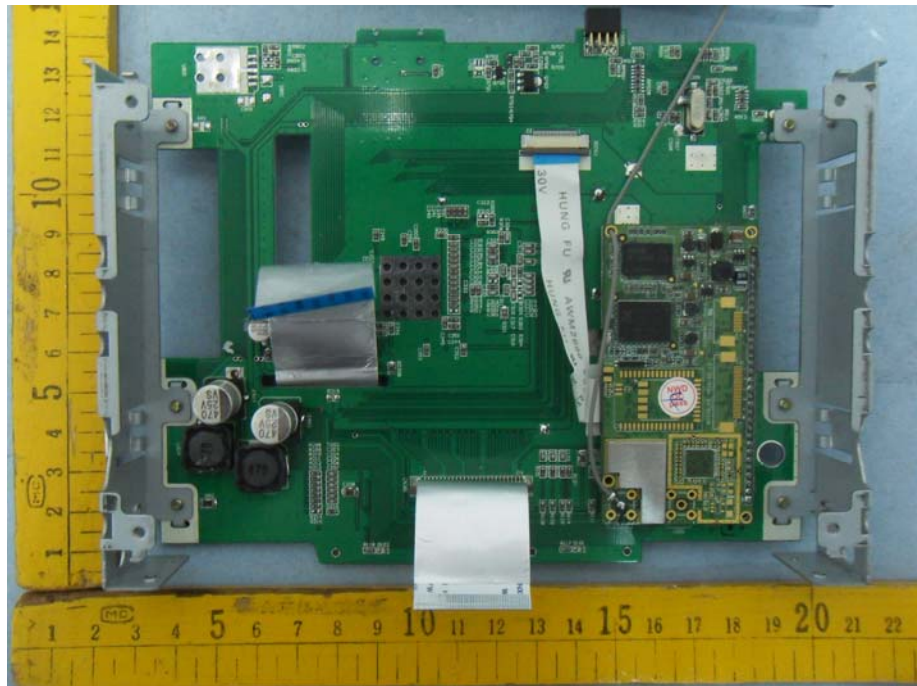


Figure 5  
PCB of the EUT-Front View

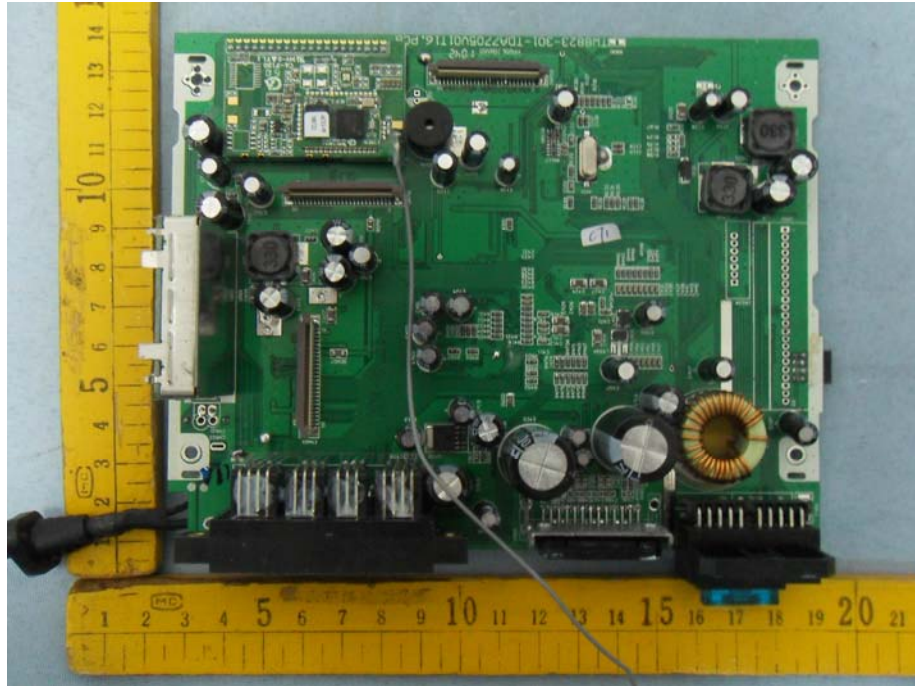


Figure 6  
PCB of the EUT-Back View

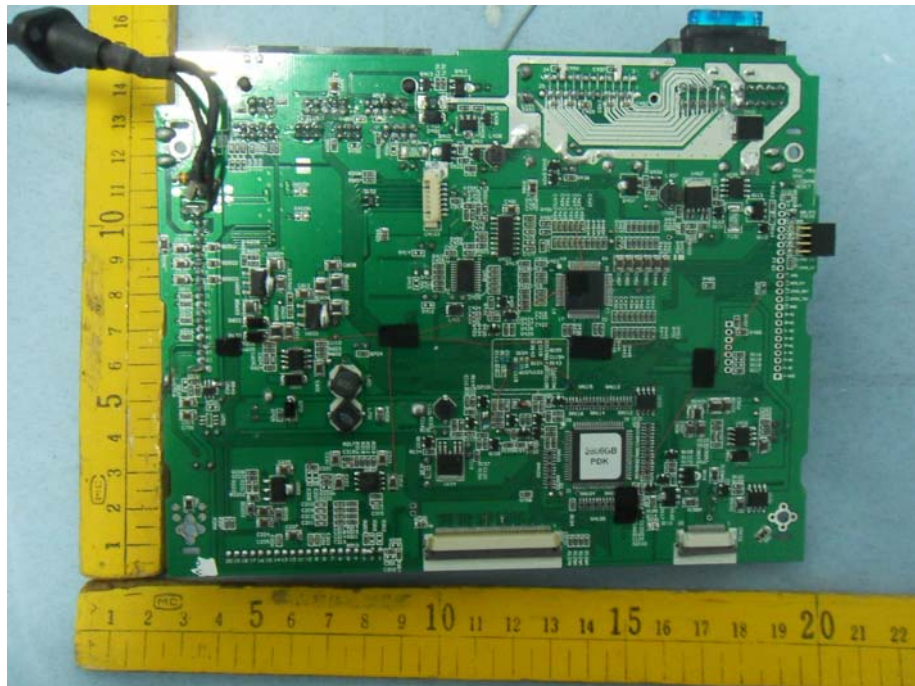




Figure 7  
PCB of the EUT-Front View (Bluetooth Module)

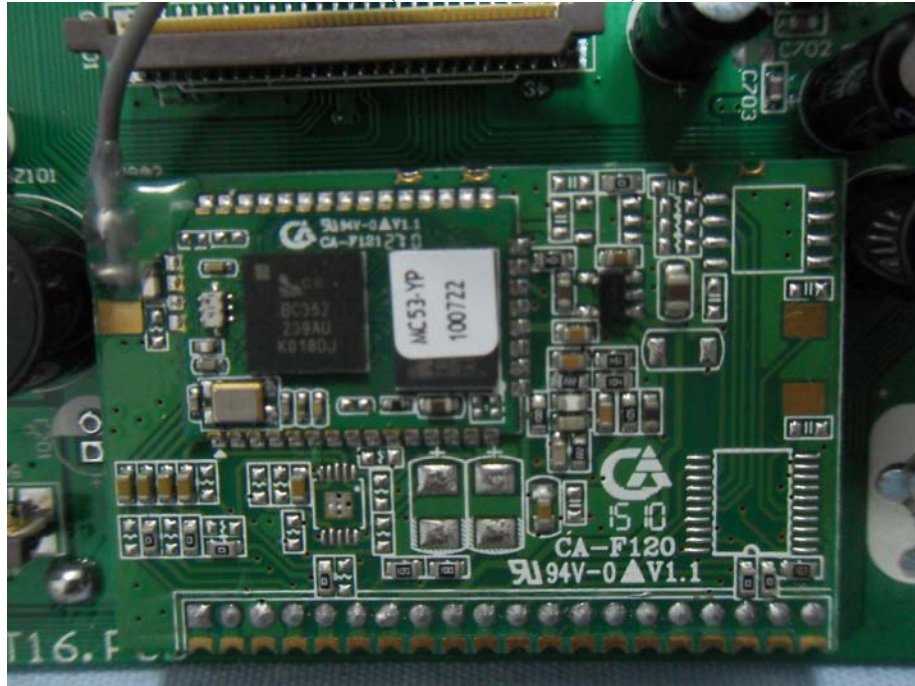


Figure 8  
Part of the EUT View

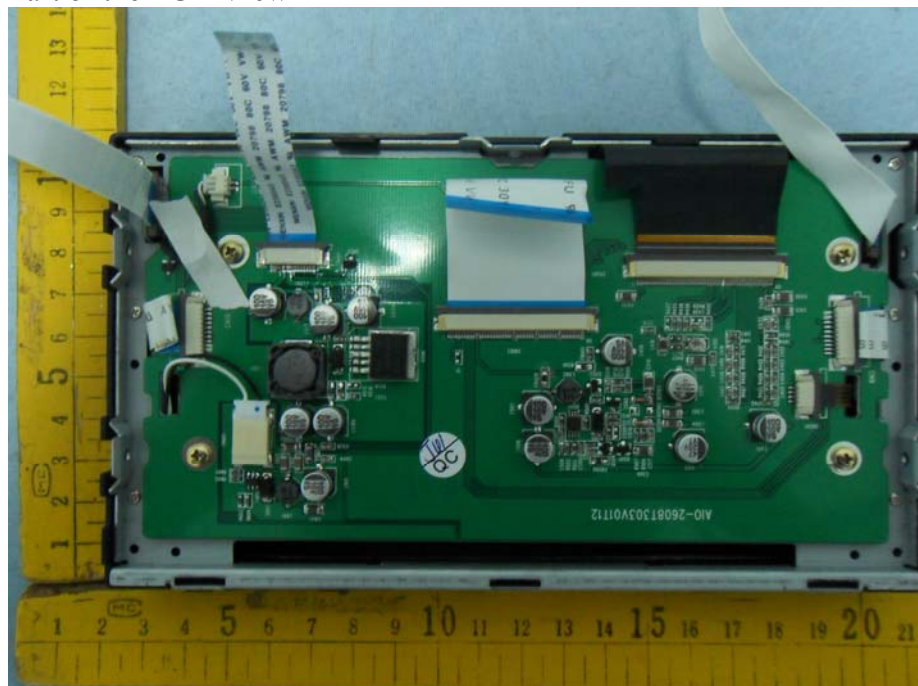


Figure 9  
Part of the EUT View

