

innuera U s e r G u i d e

WIRELESS HAND WRITE

TOUCHPAD DEVICES

RF Yo-pad (RF 2.4G DONGLE)

Table of Contents

1 Product Introduction p.2

- 1.1. Product Description p.2
- 1.2. Product Packaging p.2
- 1.3. Outlook Introduction p.3
- 1.4. Operating System Supported p.5
- 1.5. Cable(USB) Mode and Wireless Mode Supported p.5
- 1.6. Four Operating Modes Provided p.5
- 1.7. Five Power Managing Modes Provided p.5
- 1.8. Low Battery Warning and Use While Recharging p.6
- 1.9. Handwriting Input p.6

2 Program Installation p.7

- 2.1. Finger Sensing Pad Driver Installation p.7
- 2.2. Handwriting Software Installation p.11

3 Using Information p.15

- 3.1. Ways of Using Cable Mode p.15
- 3.2. Ways of Using Wireless Mode (RF 2.4G) p.16
- 3.3. Dead Battery and Battery Recharging p.19

4 Function Description p.20

- 4.1. Mouse Mode p.21
- 4.2. HandWrite Mode (Must Install driver and handwriting software) p.22
- 4.3. KeyPad Move Mode (Directional Key Function) p.22
- 4.4. KeyPad Numeric Mode (Numeric Key Function) p.22
- 4.5. Check before Use p.23

5 Driver Setting Introduction p.24

- 5.1. Setting Tool for the Sensing Pad p.24
- 5.2. Tray Icons p.25
- 5.3. Functions on the Sensing Pad p.26
- 5.4. Gestures p.28

6 Handwriting Using Information p.33

- 6.1. Handwriting Setting Introduction p.33
- 6.2. Using Information p.37
- 6.3. Often-asked Questions (Q&A) p.42

7 Specification p.44

1 Product IntroductionProduct Introduction

1.1 Product Description

The design of Yo-pad aims for solving the burden caused by the growing usage of computers, and it integrates and applies various sensing functions to provide users products that are simpler and closer to humanity. In brief, Yo-pad expects to bring computer users the most easy and convenient operation.

- **Mouse Board** : Yo-pad adopts capacitive sensing technology, and it is connected with Windows system through USB. Thus it can replace the standard mouse when using either Desktop computer or Notebook. Furthermore, it also possesses extended functions of horizontal scrolling, vertical scrolling and dragging
- **Multi-touch** : Multi-finger gesture application refers to drawing recognizable tracks on the finger Sensing Pad by fingers as a shortcut for carrying out commands when users execute the application programs. Multifarious operation modes can be reduced, which makes it get up to fast, simple, convenient and humanized operation interface. Functions like scrolling, zoom-in/out, paging and rotation can be the illustrations.
- **Handwriting Input** : As for non-English speaking (single-key input) countries, there are naturally some difficulties for keyboard input. But this product allows users to write on the touch board as the input tool directly to achieve the purpose of smoothness and swiftness. It supports multi-language handwriting input, in which traditional Chinese, simplified Chinese, Cantonese character set, Japanese, Korean, English characters, numeric symbols are included.
- **Numeric Pad** : The dimension of the sensing area of Yo-pad is equivalent to the average Key-pad, and through the printing and tactile vibration or voice feedback function of the board, correct input efficiency of operating numeric and directional keys can be provided to users.
- **Wireless Transmission** : Yo-pad can carry out information transmission with the host through three different interfaces: 1. USB Cable Wire Transmission 2. RF2.4G Radio Frequency Transmission. Users can easily select any of them according to the installation or operating distance of the host.

1.2 Product Packaging

When you get the packaging box of Yo-pad, please check if the following accessories are complete.

1.2.1 RF 2.4G Version

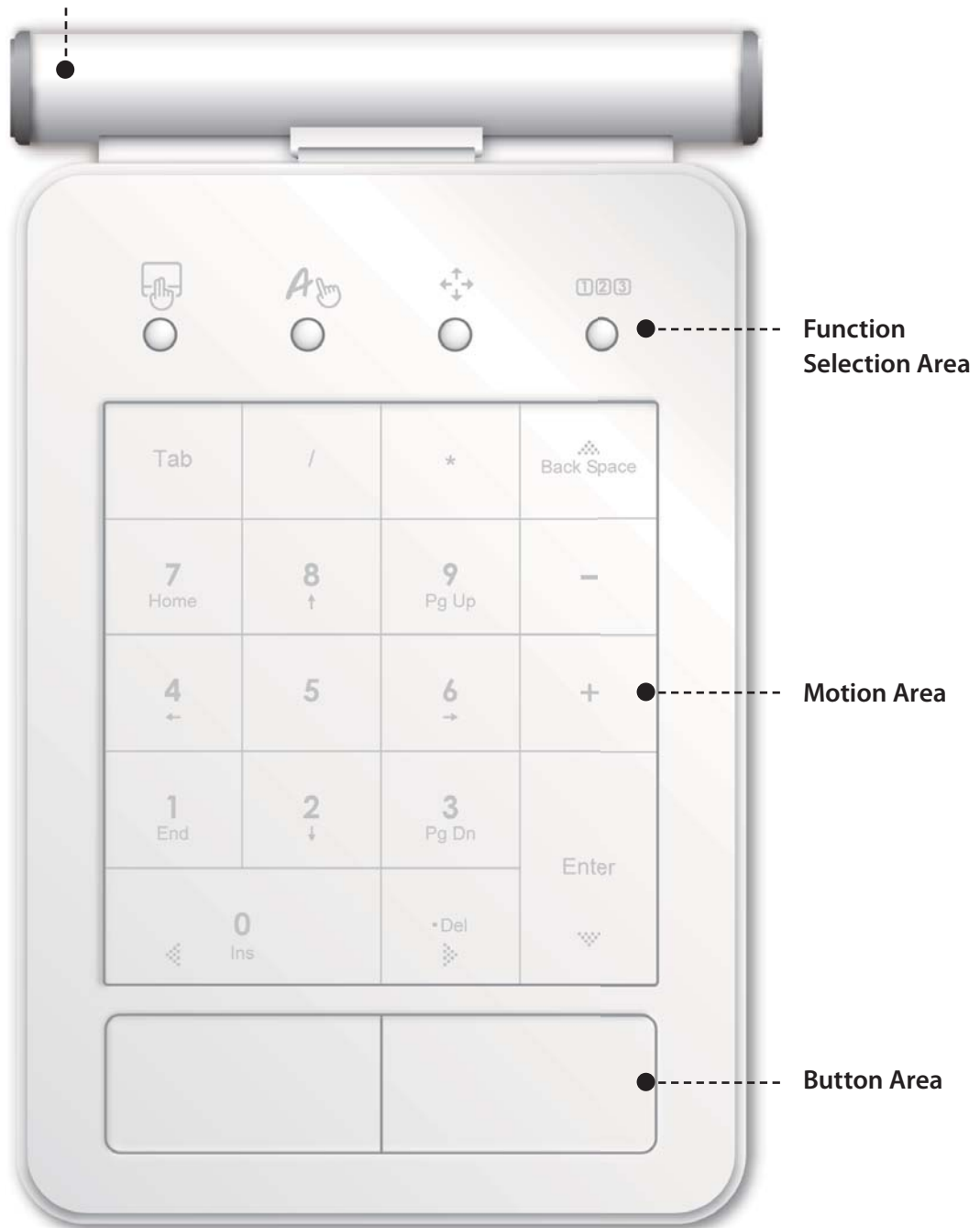
- Yo-pad Host
- USB cable
- USB 2.4G Dongle
- Battery Box
- AAA Battery x2
- Slip-proof Mat
- Driver CD (user guide included)
- Quick start guide

※ If any accessory is lacked or broken, please contact with the dealer you bought the product from.

1.3 Outlook Introduction

Battery Box

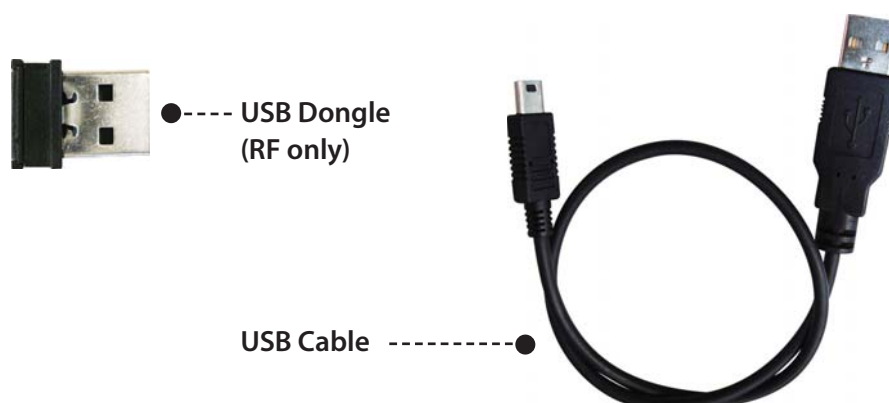
Can move the battery box to the location of the slip-proof on the backside.



The Front of Yo-pad Host



The Back of Yo-pad Host



1.4 Operating System Supported

- Microsoft Windows XP
- Microsoft Vista
- Microsoft Windows 7

1.5 Cable(USB) Mode and Wireless Mode Supported

1.5.1 Yo-pad supports common-used bus USB2.0, and also supports common-used USB1.1 at the same time.

1.5.2 Yo-pad also supports RF 2.4G, and its longest distance for use can be up to 5m.

※ **Although Yo-pad can support cable mode and wireless mode, only one mode can be used at a time. If you want to switch wireless mode to cable mode, please insert USB cable.**

1.6 Four Operating Modes Provided

- Mouse Mode(Mouse and Gesture Function)
- HandleWrite Mode(Handwriting Pad Function)
- KeyPad Move Mode(Directional Key Function)
- KeyPad Numeric Mode (Numeric Key Function)

Yo-pad acts as a multifunctional USB product. It can be used as a sensing pad or a handwriting pad, and function keys of the keyboard. If you want to use the mouse on Notebook or PC, you can connect it to Windows through USB or wireless mode. Any driver is not needed. You only have to slide single finger smoothly on the surface of Yo-pad, and the cursor can be easily moved.

If you need additional functions such as setting horizontal scrolling, two finger gestures or handwriting requirements, collocating Yo-pad driver and handwriting software can fulfill these demands.

Yo-pad provides four buttons (along with LED indicator light) for switching among Gesture Mode (Mouse and Gesture Function), Handwriting Mode (Handwriting Pad Function), KeyPad Move Mode (Directional Key Mode Num Lock off) and KeyPad Numeric Mode(Numeric Key Function Num Lock on).

1.7 Five Power Managing Modes Provided

1.7.1 **General Mode** : the mode used under general situations.

1.7.2 **Stand-by Mode** : When the general mode is not used after 10 seconds, this mode will be entered to save power.

1.7.3 **Sleep Mode** : When the stand-by mode is not used after 2 minutes, this mode will be entered to save more power.

1.7.4 **Shut Down Mode** : When the sleep mode is not used after 10 minutes, this mode will be entered to shut down the power completely

1.7.5 **Low Power Mode** : If the power is low, the LED light in the Function Selection Area of Yo- pad will blink to remind you.




※ **The five power managing modes mentioned above are only applicable while using wireless mode.**

1.8 Low Battery Warning and Use While Recharging

When the battery is low, the LED light in the Function Selection Area of Yo-pad host will blink or a warning window will jump out through the driver to remind you of the low power. Changing a battery is recommended to reach the best use.

If the battery you use is rechargeable, you can insert USB Cable into Yo-pad host, then the battery will be recharged, and it will not interfere with your use. (But please remember to remove the Dongle first.)

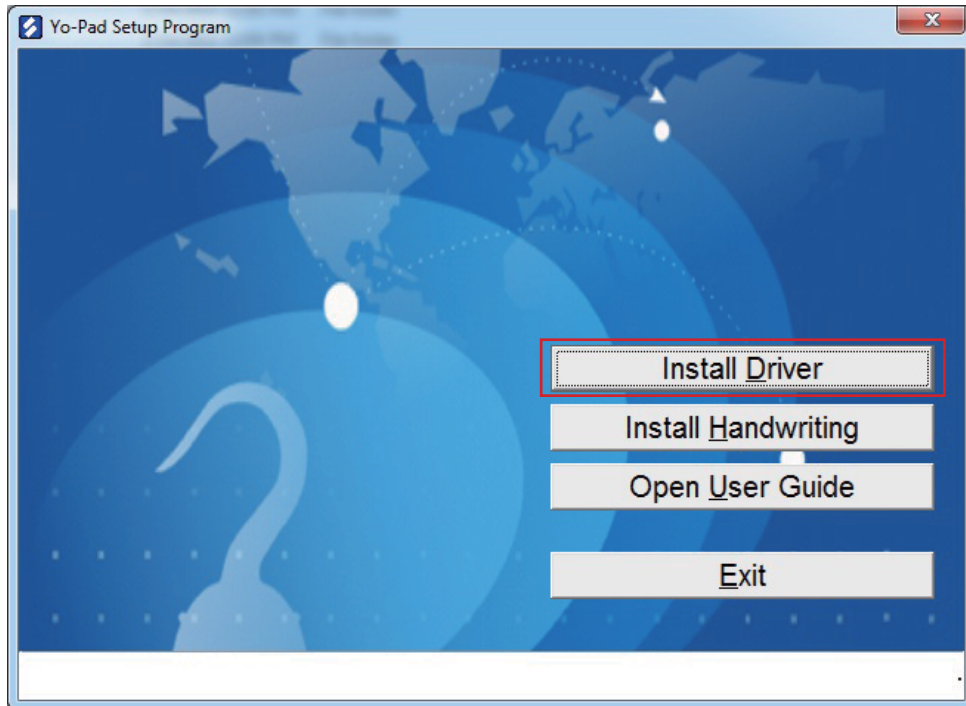
1.9 Handwriting Input

- Traditional Chinese(Big5) Supported : 13060 words
- Simplified Chinese(GB) Supported : 6763 words
- Cantonese(HKSCS-2001) Supported : 4818 words
- Japanese Supported : 169 words
- Japanese Kanji Supported : 6355 words
- Korean Supported : 2350 words
- Korean Hanja Supported : 4620 words
- English Characters Supported : 52
- KeyPad Symbols Supported : 32
- Numbers Supported : 10
- Built-in Gesture Function Supported :  Change lines ,  Delete ,  Space ; please refer to 6.2.4.3 Application of other functions

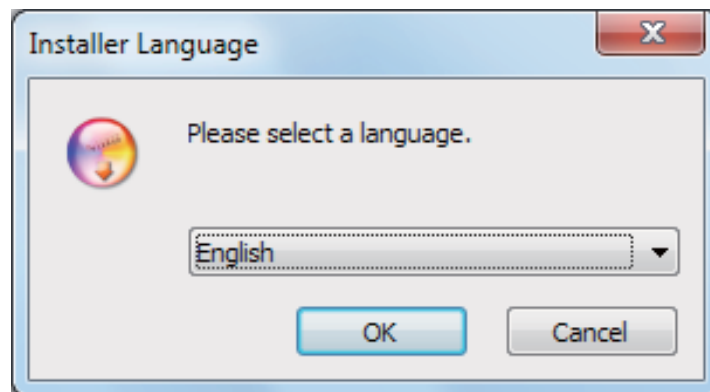
2 Program Installation

2.1 Finger Sensing Pad Driver Installation

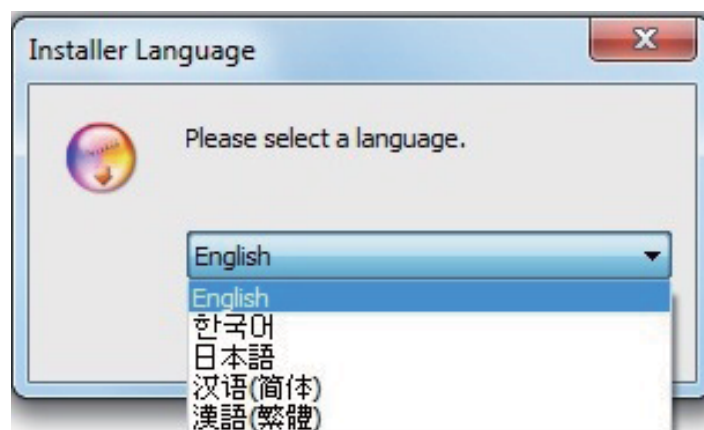
2.1.1 Insert a compact disk, and a program installation table will appear. Please choose "Install Driver (D)" to start the installation.



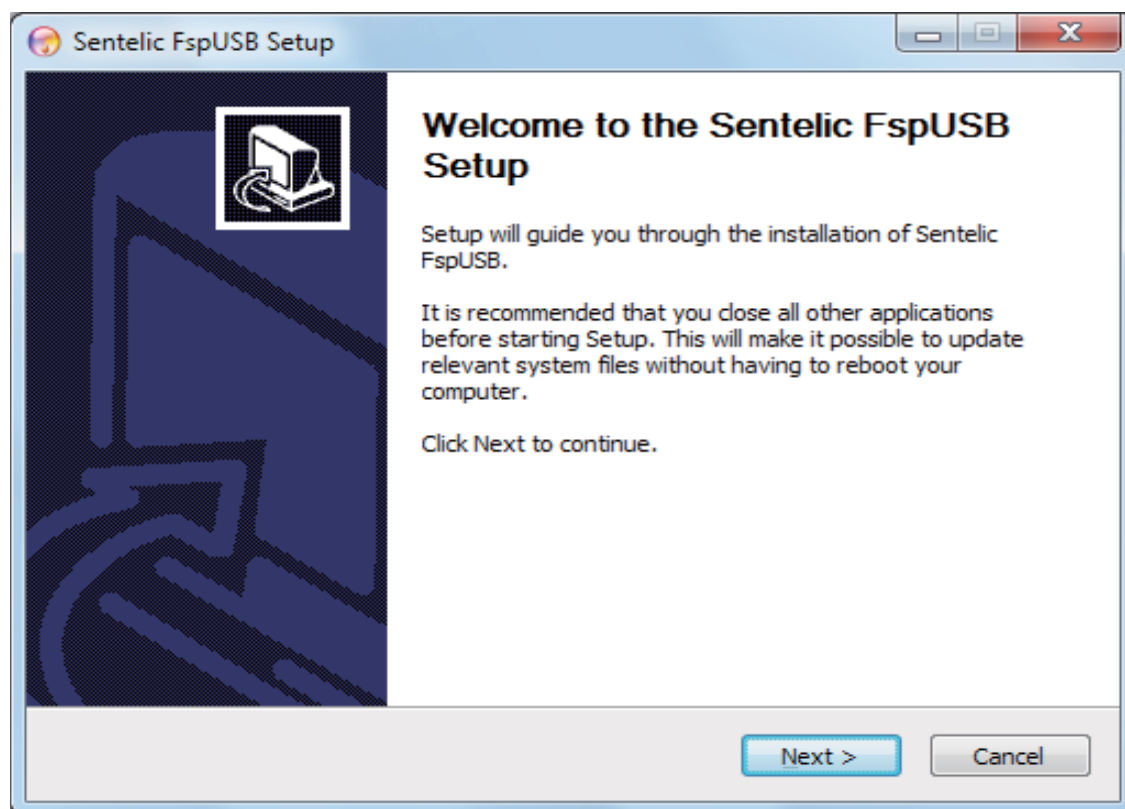
Choose the language you want to install, and click "OK".



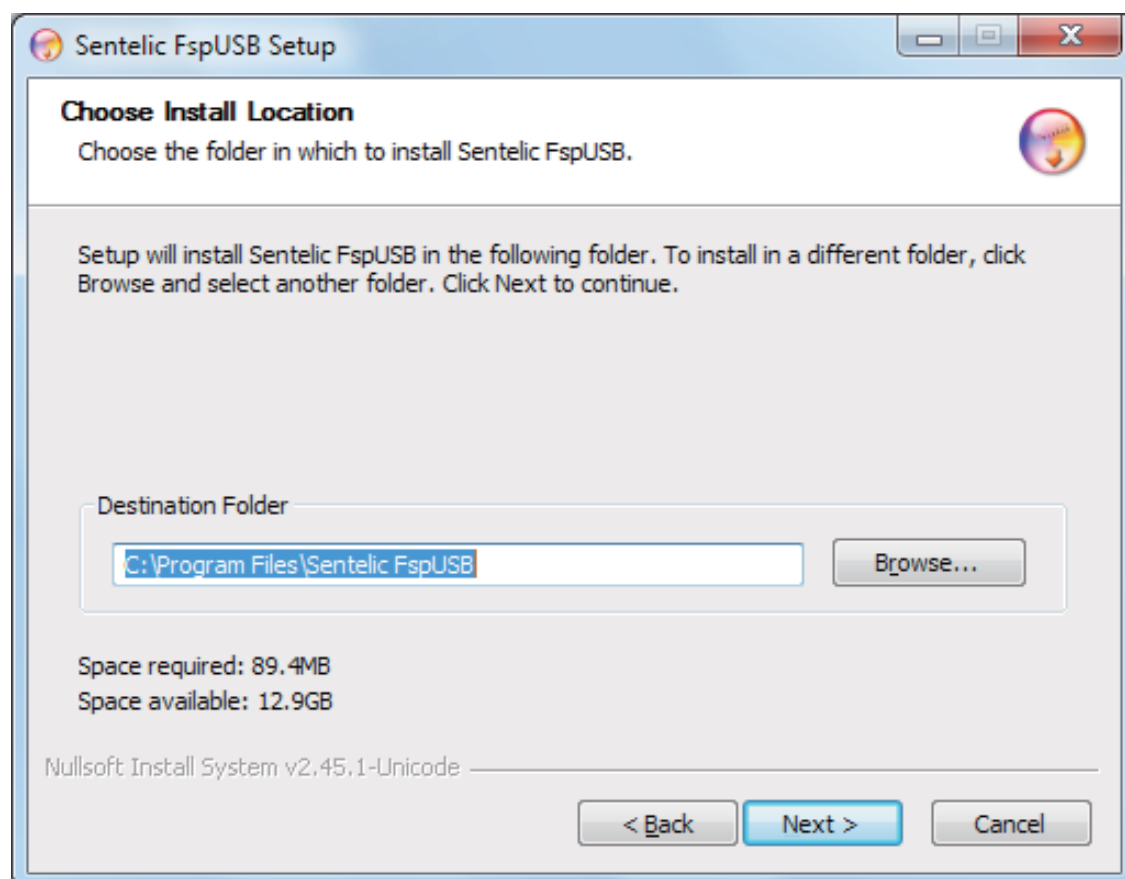
There are five languages provided.



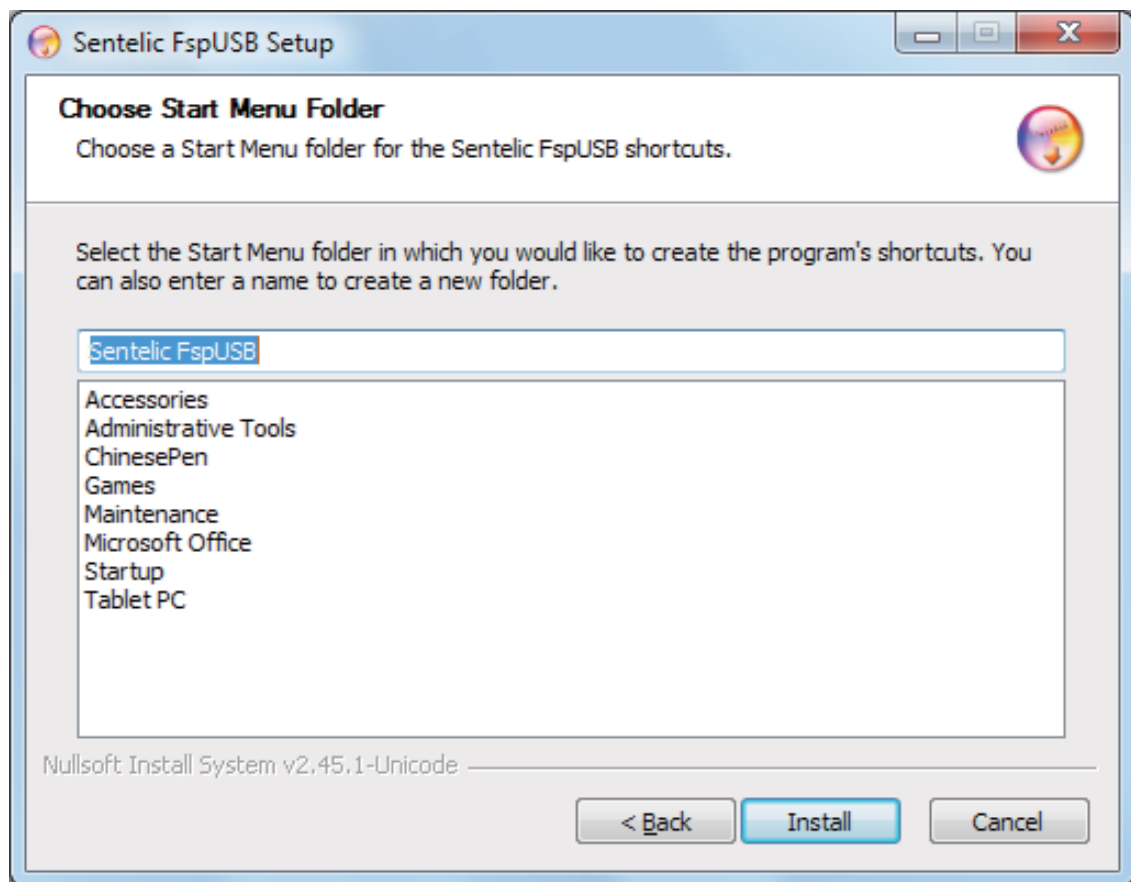
2.1.2 Click "Next" to continue



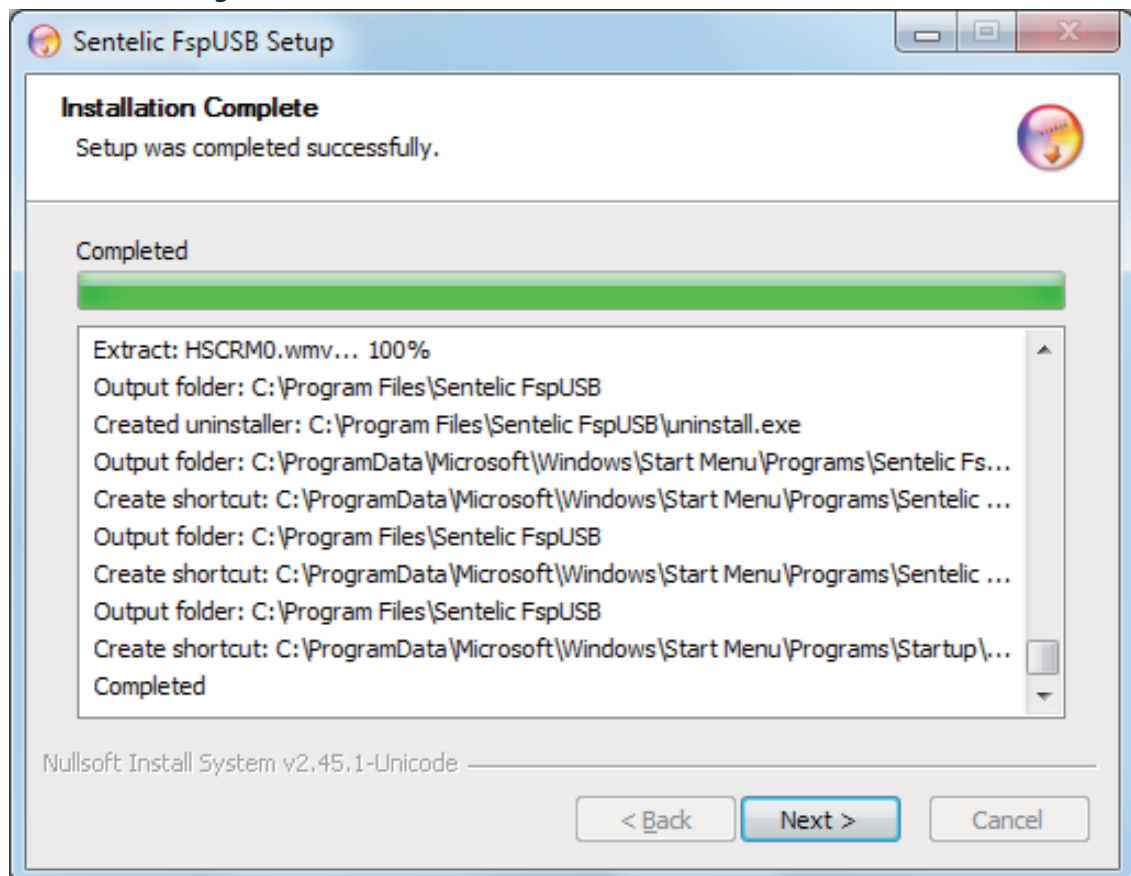
2.1.3 Choose the install location, set it as "C : \Program Files\Sentelic FspUSB", and click "Next" to continue.



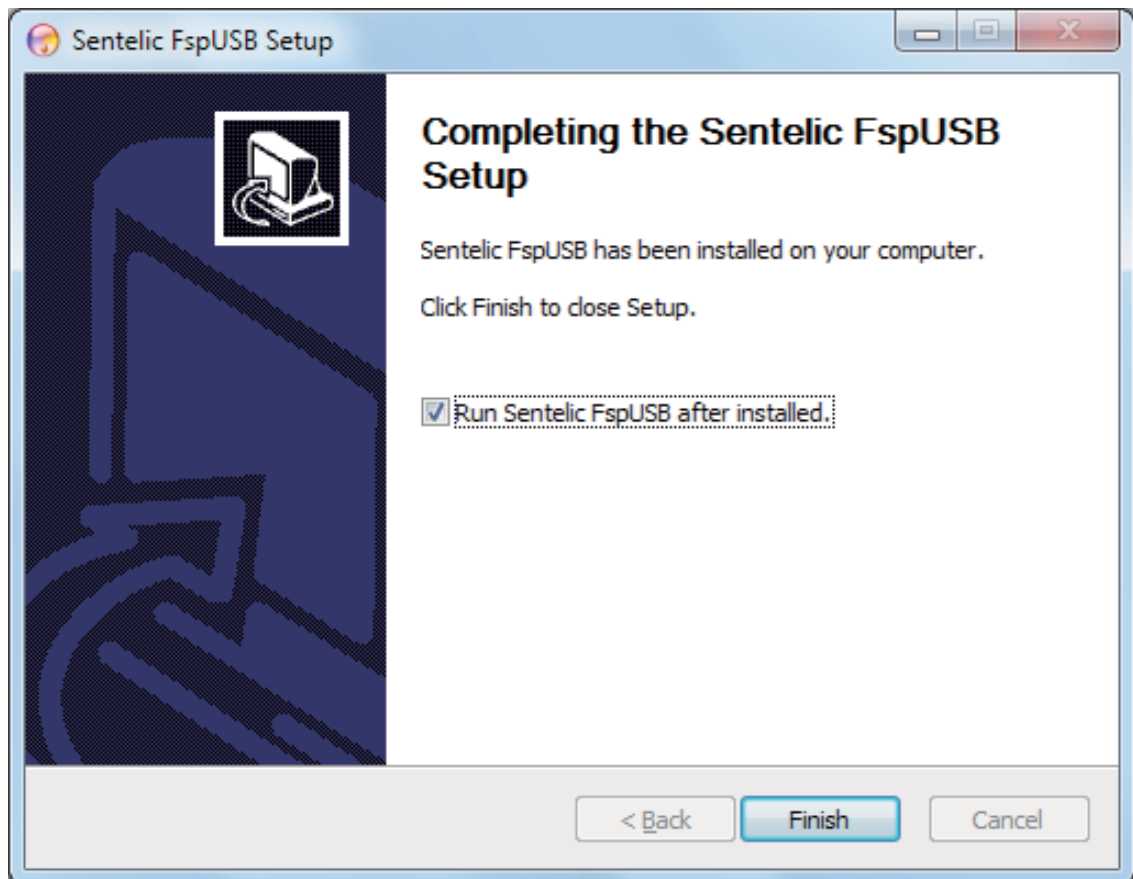
2.1.4 Choose the start menu folder in Programs (this is default value), and click "**Install**" to continue.



2.1.5 Click "**Next**" to begin the installation.

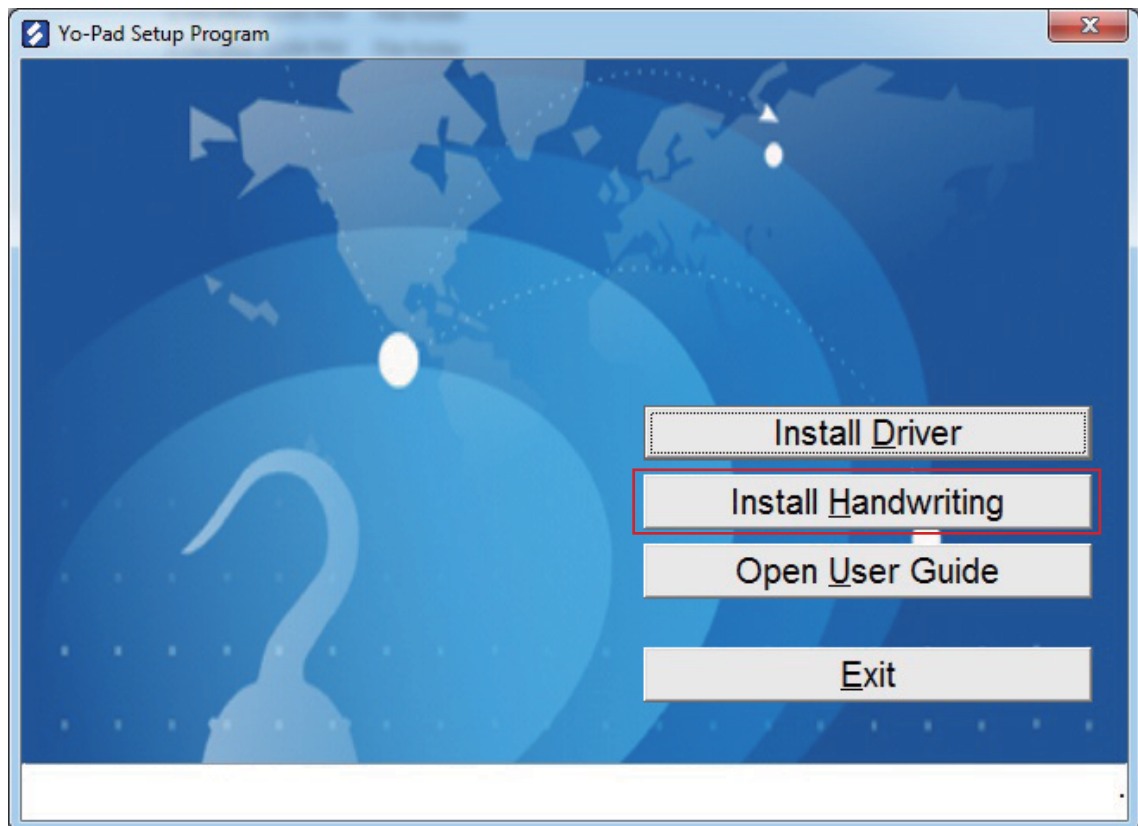


2.1.6 Click "**Finish**" to end the installation and start the program FspUSB.

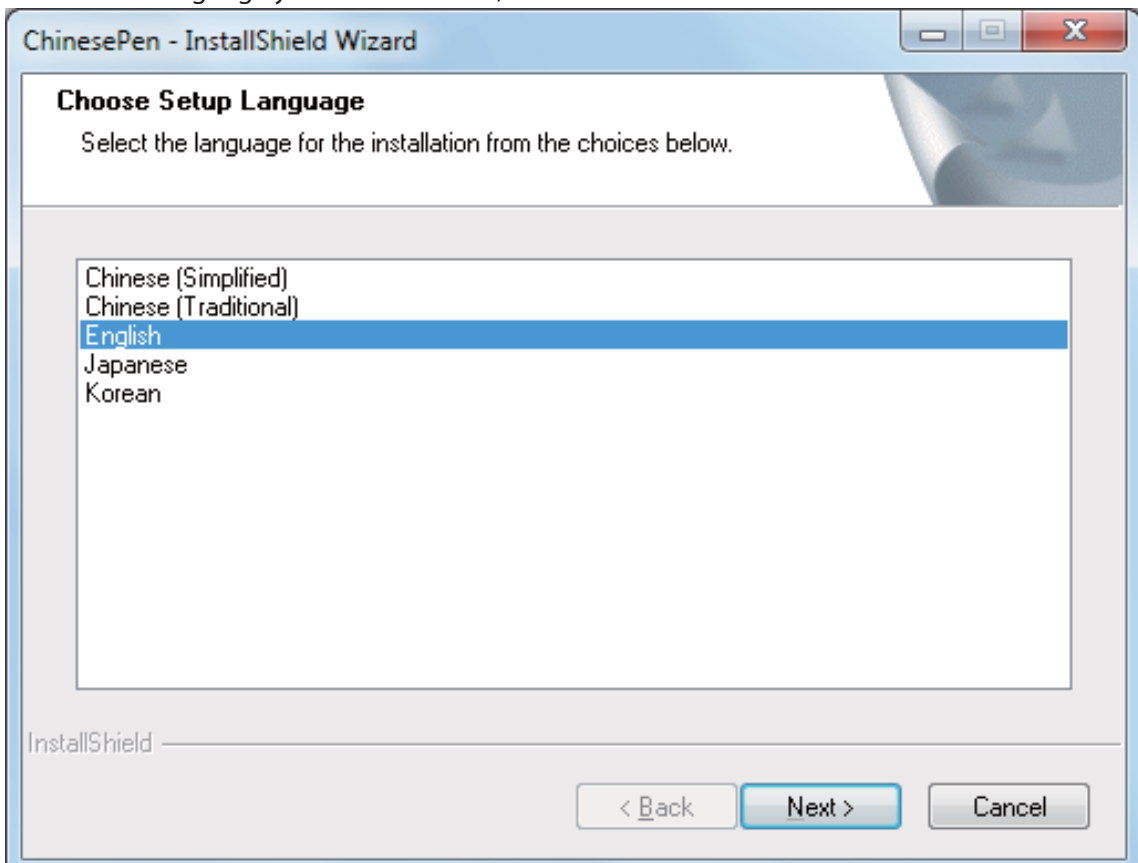


2.2 Handwriting Software Installation

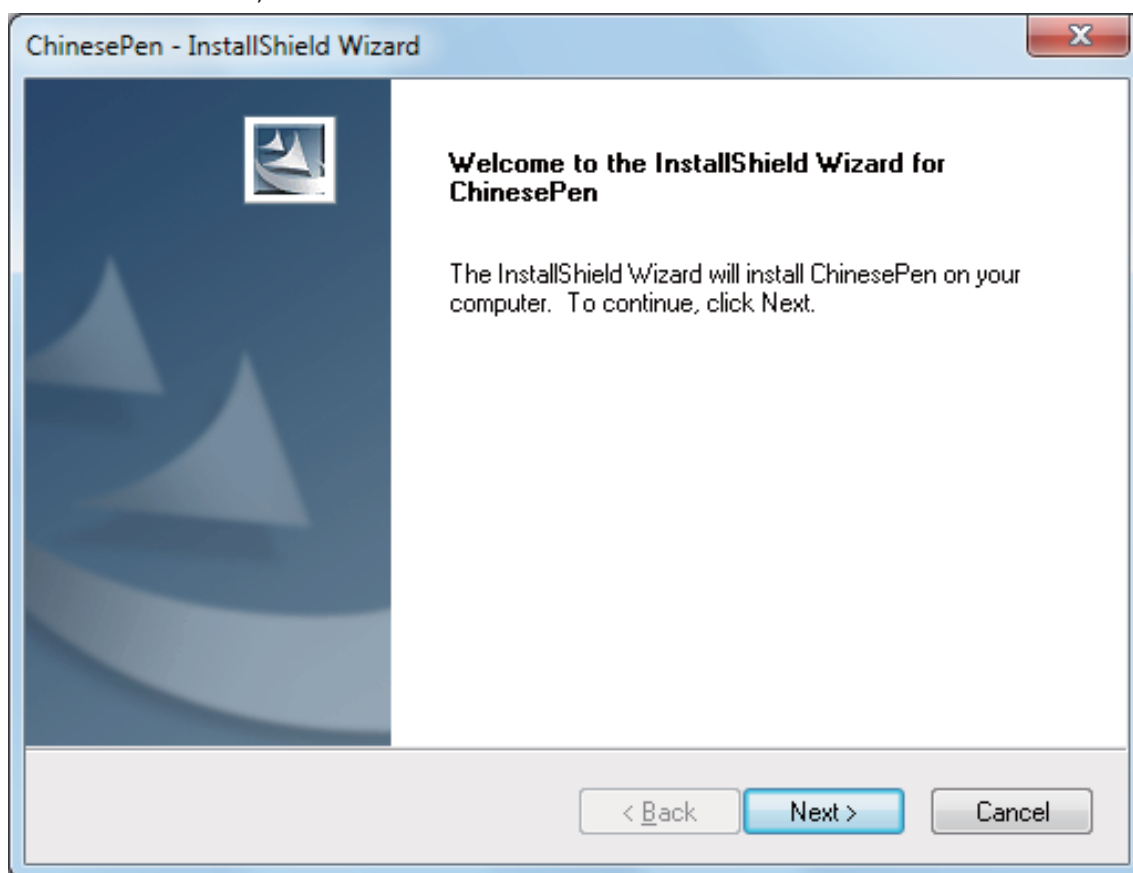
2.2.1 Insert a compact disk, and a program installation table will appear. Please choose "Install Handwriting (H)" to start the installation.



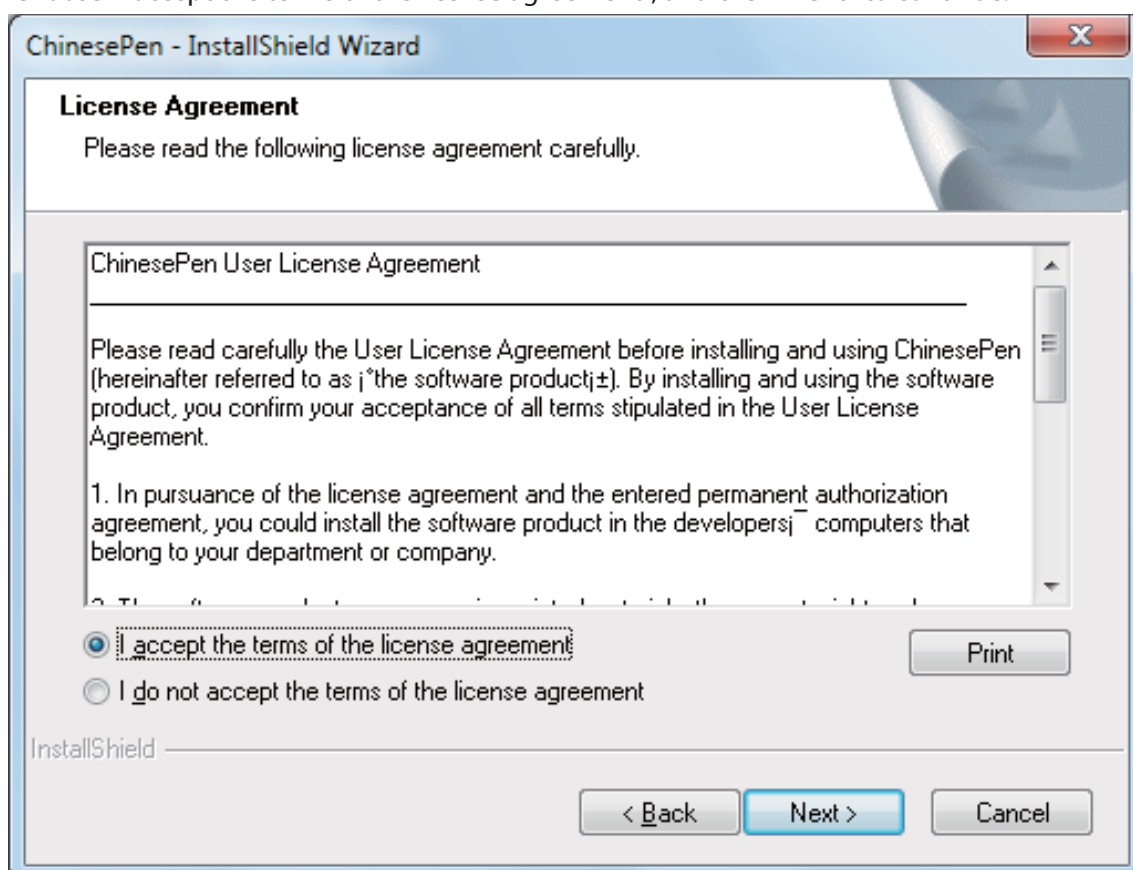
2.2.2 Choose the language you want to install, and click "Next" to continue.



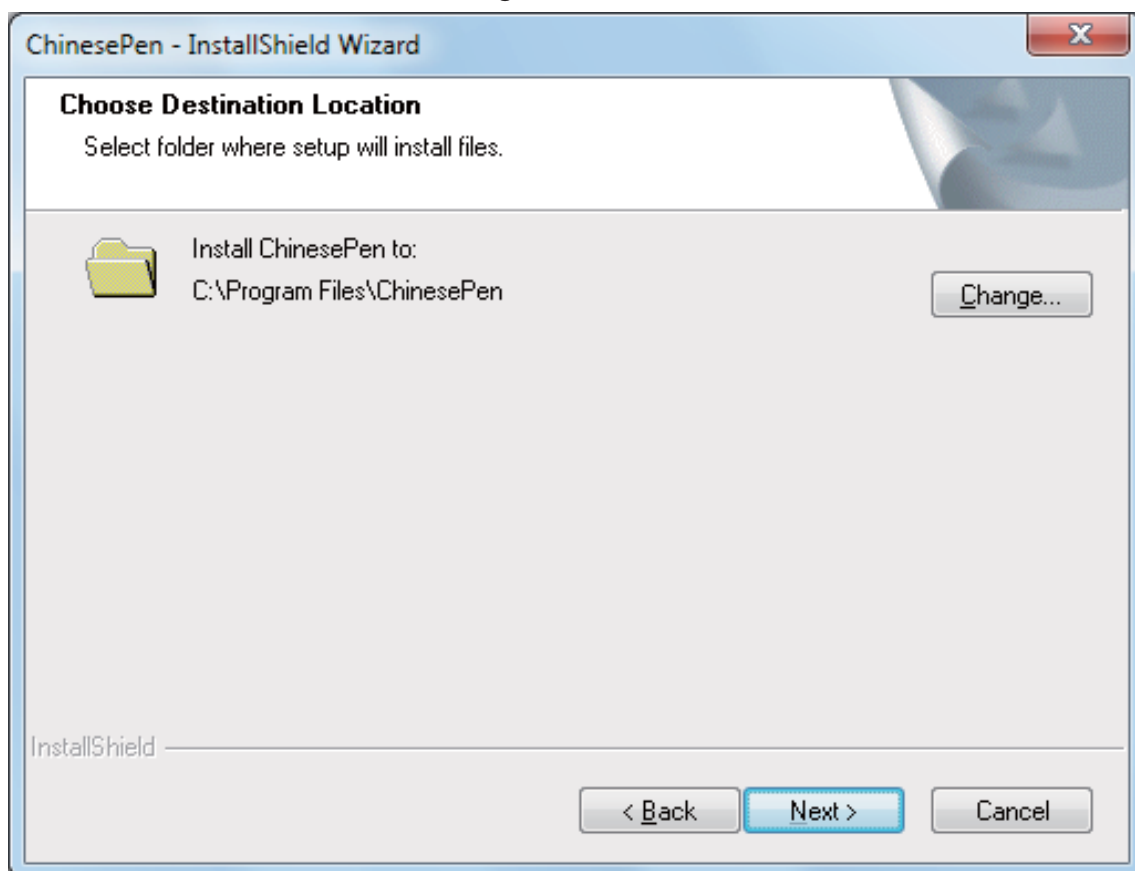
2.2.3 Start the installation, and click "Next" to continue.



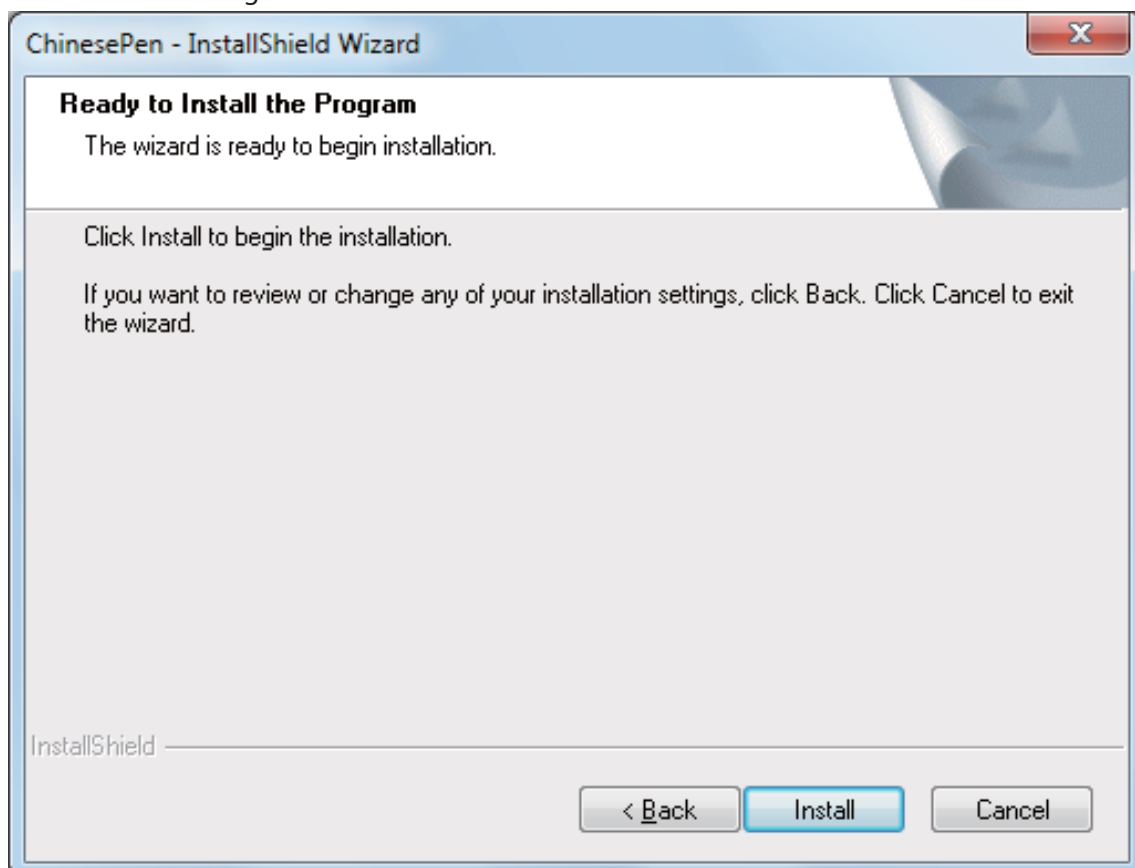
2.2.4 Choose "I accept the terms of the license agreement", and click "Next" to continue.



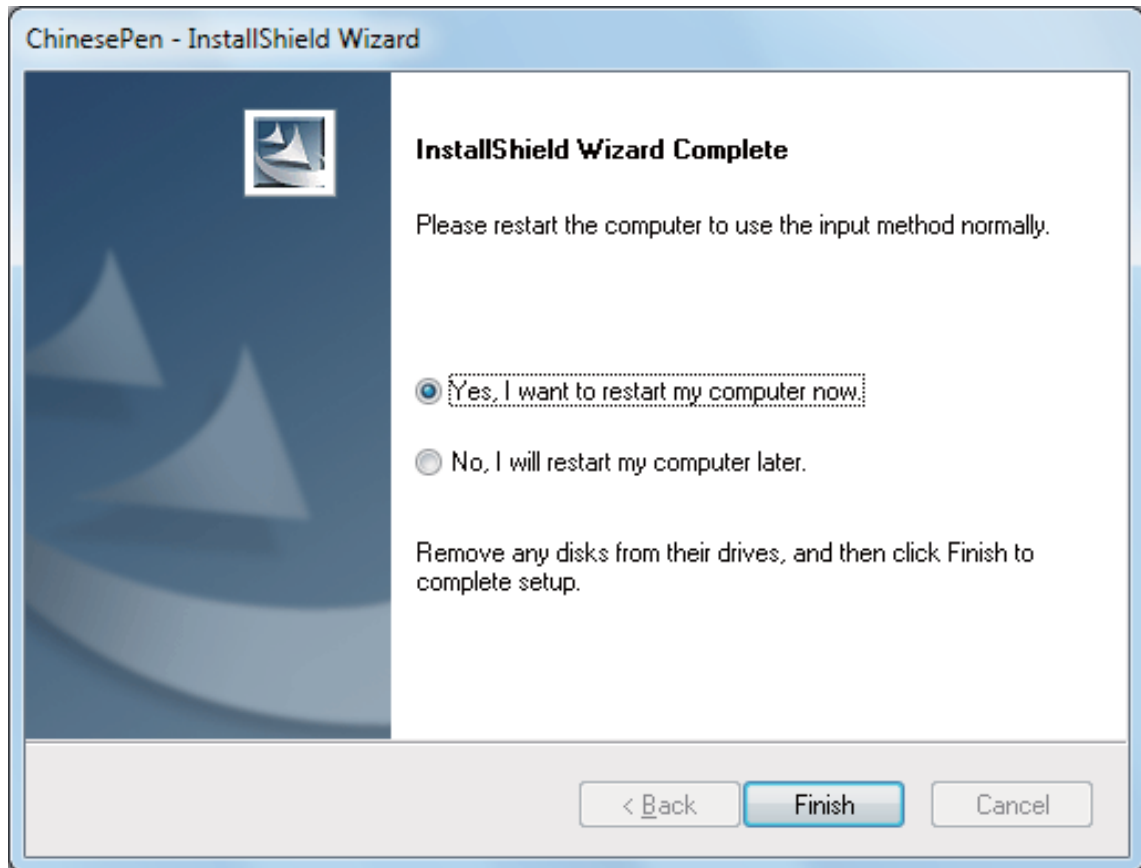
2.2.5 Choose install location, set it as "C : \Program Files\ChinesePen" and click "Next" to continue.



2.2.6 Click "Install" to begin the installation.



2.2.7 When the installation is complete, click "**Finish**" to end the installation and restart the operating system.



3 Using Information

3.1 Ways of Using Cable Mode

Connect Yo-pad host and the computer with USB Cable, at which the LED of Mouse Mode in Function Selection Area will be on, and Yo-pad can be used.

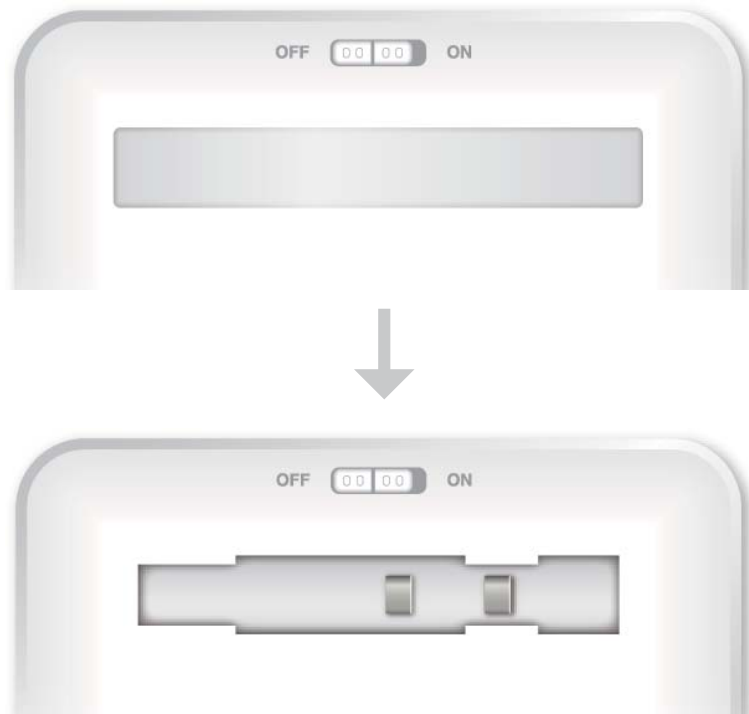


3.2 Ways of Using Wireless Mode (RF 2.4G)

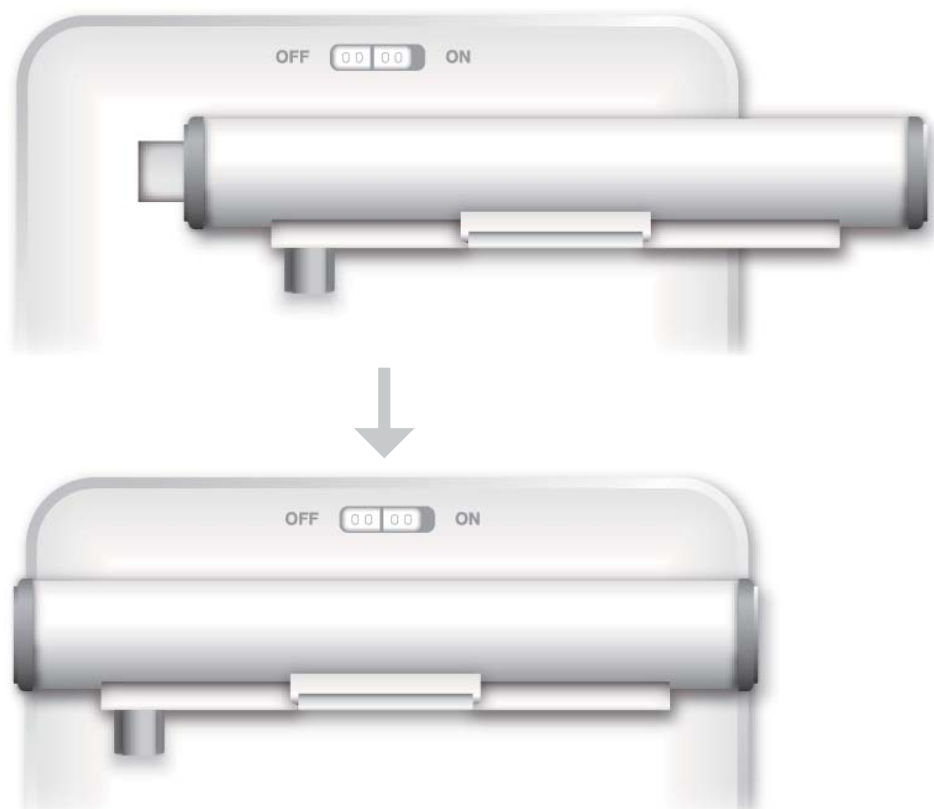
※ RF configuration is done while shipping from factory. The four LED lights will show in marquee mode when first turning on, and since Yo-pad host has not been matched and connected with the Dongle, please complete the match before use.

3.2.1 Ways of operation

3.2.1.1 Tear the sipproof pad behind Yo-pad host.



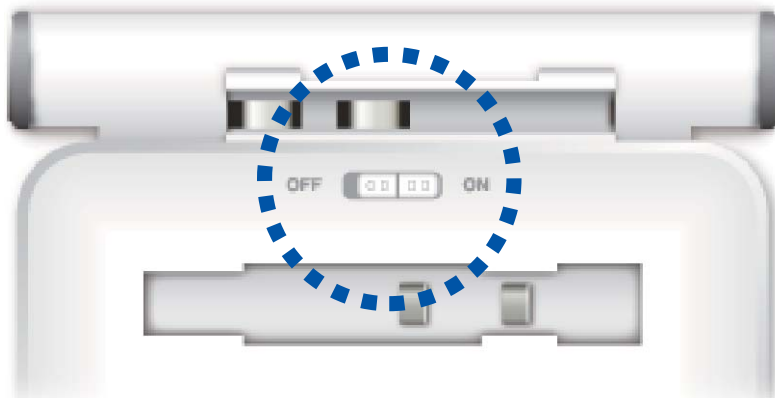
3.2.1.2 Mount the battery box in the position of the slipproof pad, then push the battery box to the left bottom and make it fastened.



3.2.1.3 Or insert the battery box from the front into the USB on Yo-pad.



3.2.1.4 Open the switch of Yo-pad.

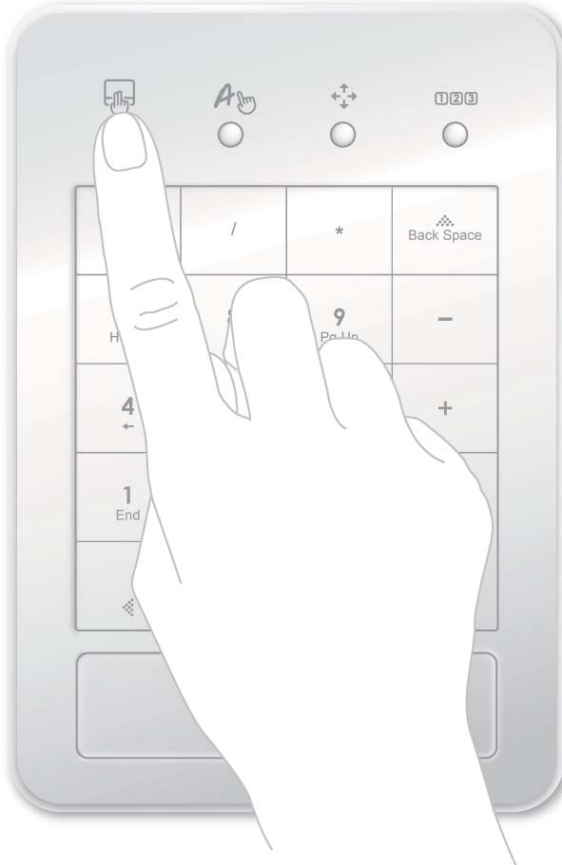


3.2.1.5 Insert the USB Dongle into the computer, and configure channels according to "**Wireless RF Channel Configuration**" (in the next page) before use.

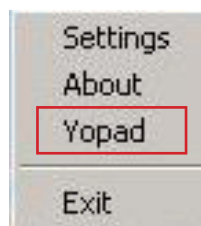


3.2.2 Wireless RF Channel Configuration

3.2.2.1 Press the first button in the Function Selection Area, and loose it after opening the power. All of the LED lights in the Function Selection Area will be on and then off; this is normal, which means the configuration is entered at this time.



3.2.2.2 Move the cursor to the tray icon of the driver at the bottom right corner, and choose "Yo-pad" with a right click of mouse.



3.2.2.3 Press the button "Add". If a channel configuration succeeds, an ID will be added into the SLOT 1 in the upper left corner, and the first light in the Function Selection Area on Yo- pad host will be on.

3.3 Dead Battery and Battery Recharging

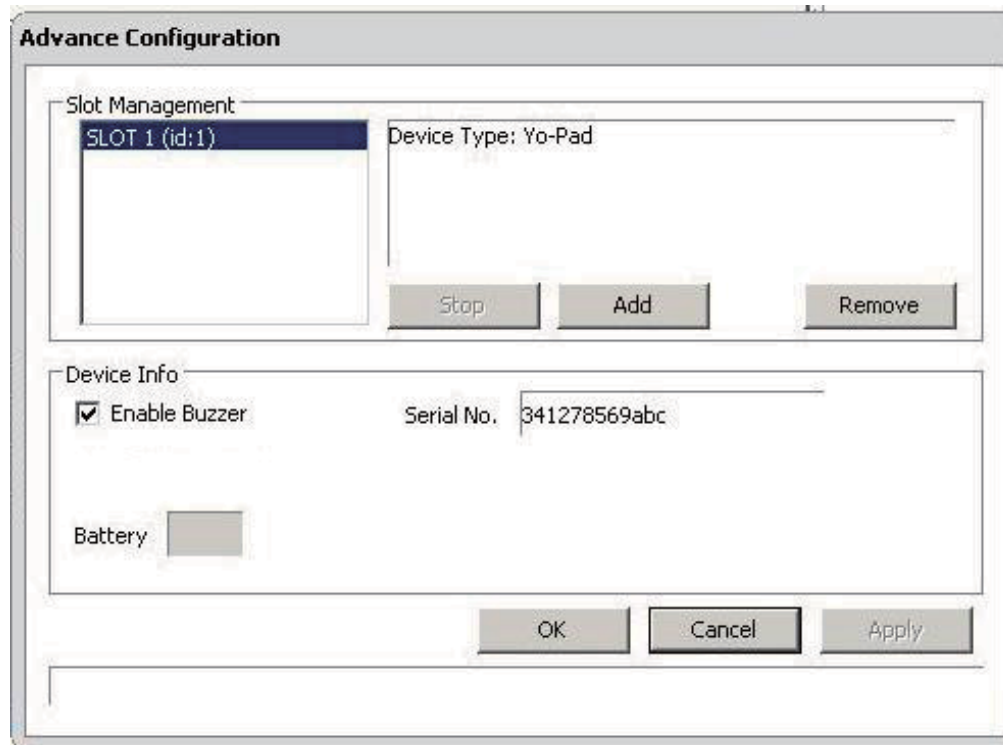
3.3.1 When Yo-pad has been used after turning on for a while and the battery is low, the LED light in the Function Selection Area will blink to remind you of changing a battery.

3.3.2 If the battery you use is rechargeable, you can insert USB Cable to recharge it.

※ **Never use un rechargeable batteries to do the recharging.**

※ **Instead of Carbon Zinc batteries, alkaline or Ni-MH rechargeable batteries are recommended to use for longer using time.**

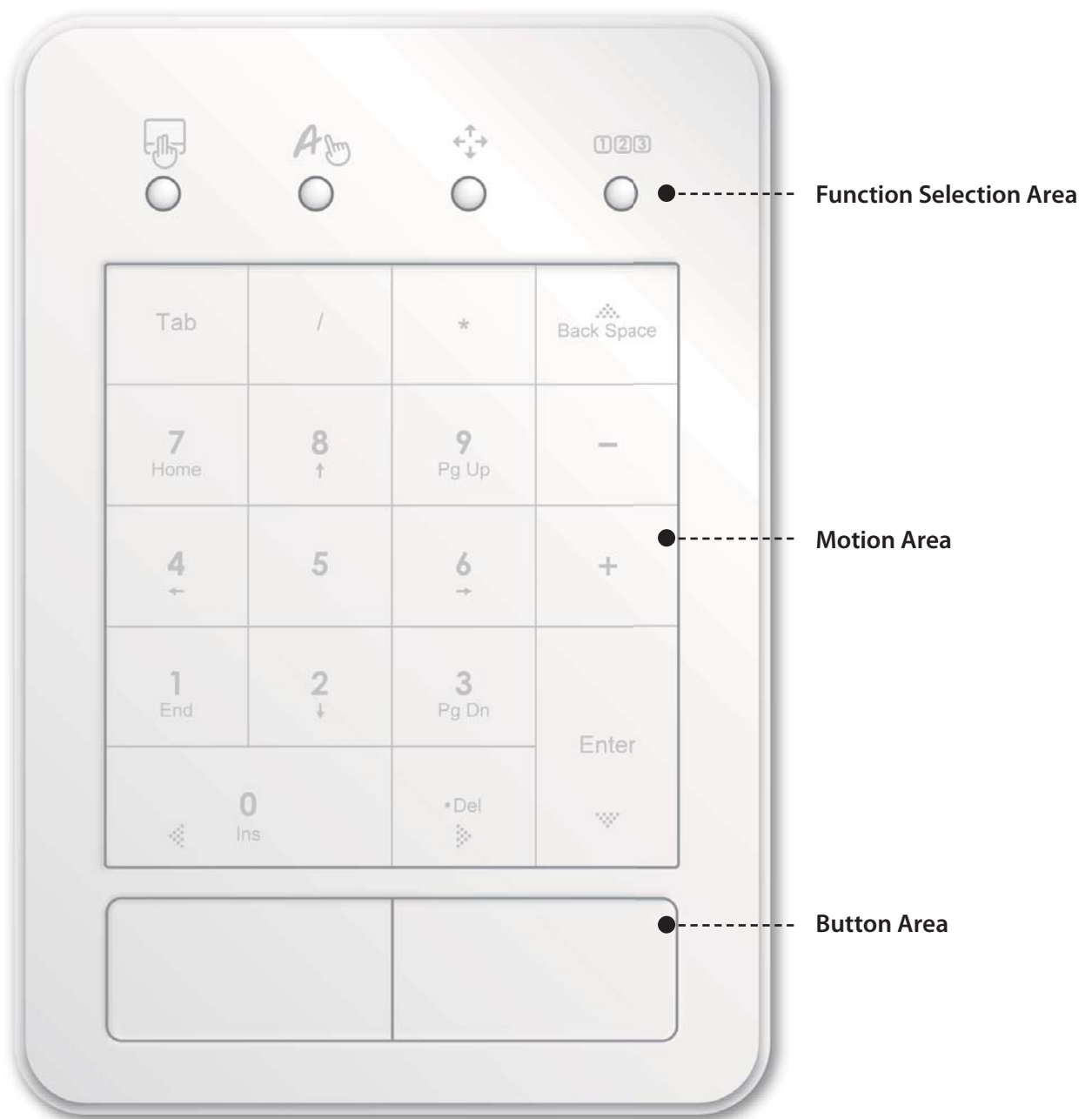
※ **Ni-MH rechargeable batteries are highly recommended to use for longer battery life.**



4 Function Description

This product can be divided into three areas :

- **The first area is Function Selection Area** : in which four modes are provided for users to choose: Mouse Mode (Mouse and Gesture Function), Handwriting Mode (Handwriting Pad Function), KeyPad Move Mode (Directional Key Function) and KeyPad Numeric Mode (Numeric Key Function).
- **The second area is Motion Area** : in which users can slide single finger to do cursor movements, or do the gestures with two fingers after enabling the application program as its shortcut function.
- **The third area is Button Area** : Its function is the same as the left and right button.



4.1 Mouse Mode

When this mode is selected, one-finger slide can be used to do cursor movements, while two-finger slide can be used to do gestures.







4.1.1 Mouse Function

- Cursor movements can be done when sliding single finger on Yo-pad.
- Left and right button functions are supported.
- Vertical scrolling can be used when driver is not installed.
- Vertical and horizontal scrolling can be supported through driver.

4.1.2 Gesture Function (Driver should be installed)

Basic gesture category is supported, in which 2F Straight up / down, 2F Straight left / right, 2F Curve and 2F Zoom(eight gestures in total) are included as the following table.

	2F Straight Up		2F Zoom In
	2F Straight Down		2F Zoom Out
	2F Straight Right		2F Curve CCW
	2F Straight Left		2F Curve CW

4.2 HandWrite Mode (Must Install driver and handwriting software)

- It only supports the handwriting software in the driver disk.
- Handwriting recognition of languages such as traditional Chinese/Simplified Chinese/English/Japanese/Korean/Cantonese is provided.



4.3 KeyPad Move Mode (Directional Key Function)

- When this mode is chosen, you can click any numeric key or function key in Motion Area to make it work.
- When Num Lock is off, function keys like up(↑), down(↓), left(←), right(→), insert and delete are supported.



4.4 KeyPad Numeric Mode (Numeric Key Function)

- When this mode is chosen, you can click any numeric key or function key in Motion Area to make it work.
- When Num Lock is on, buttons like numbers 0~9, +, -, *, /, Tab and ← are supported.



4.5 Check before Use

4.5.1 Make sure Yo-pad host is inserted into the computer.




4.5.2 Make sure the following icons appear in the toolbar which is in the bottom right corner of the window.

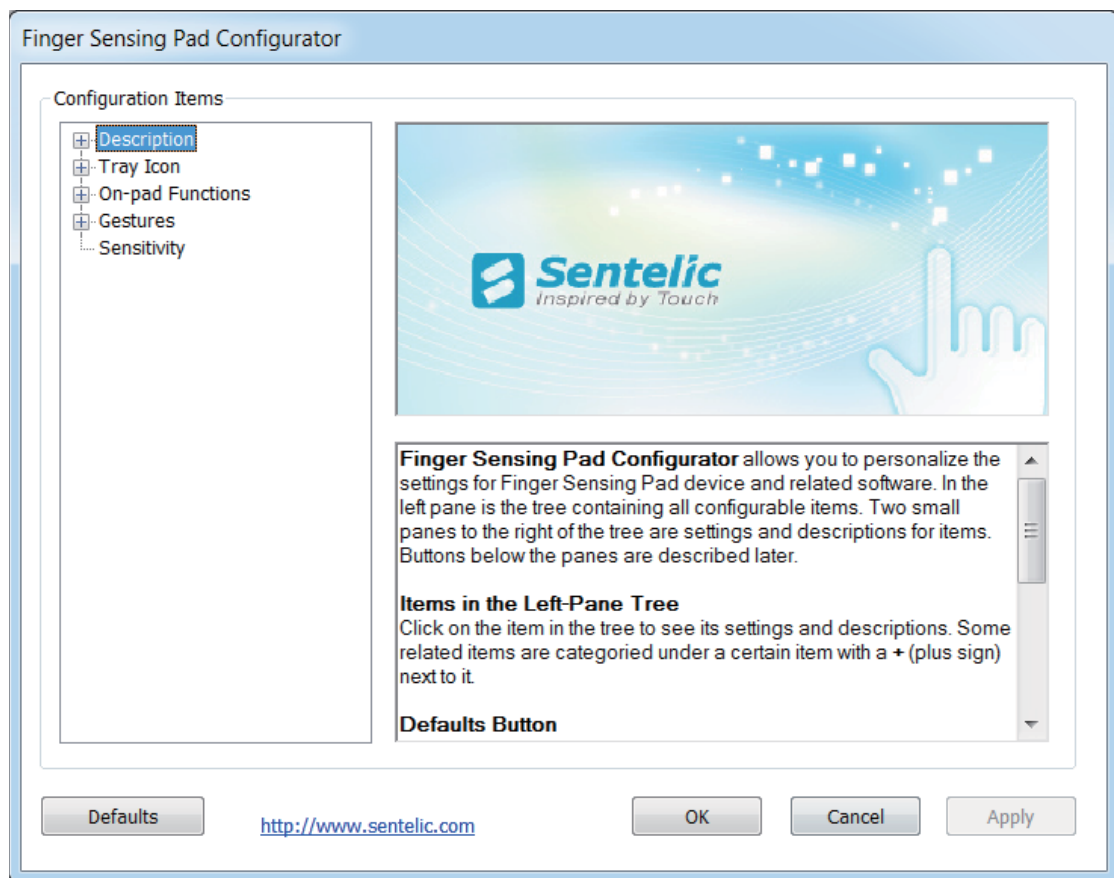


5 Driver Setting Introduction

Multi-finger gesture application refers to users' drawing recognizable tracks on the Finger Sensing Pad when executing application programs in order to replace keyboard, mouse, catalog, toolbar as a shortcut to execute demands. It can not only simulate hot keys on the keyboard, but can be used to define Scan code, Mouse wheel, Window message and simulate Mouse Button, thus bring users more body language and more humanized operating interface.

When users want to do the gesture settings, they only need to give two quick clicks on the  icon in the toolbar which is in the bottom right corner, and the setting table of driver will be open.

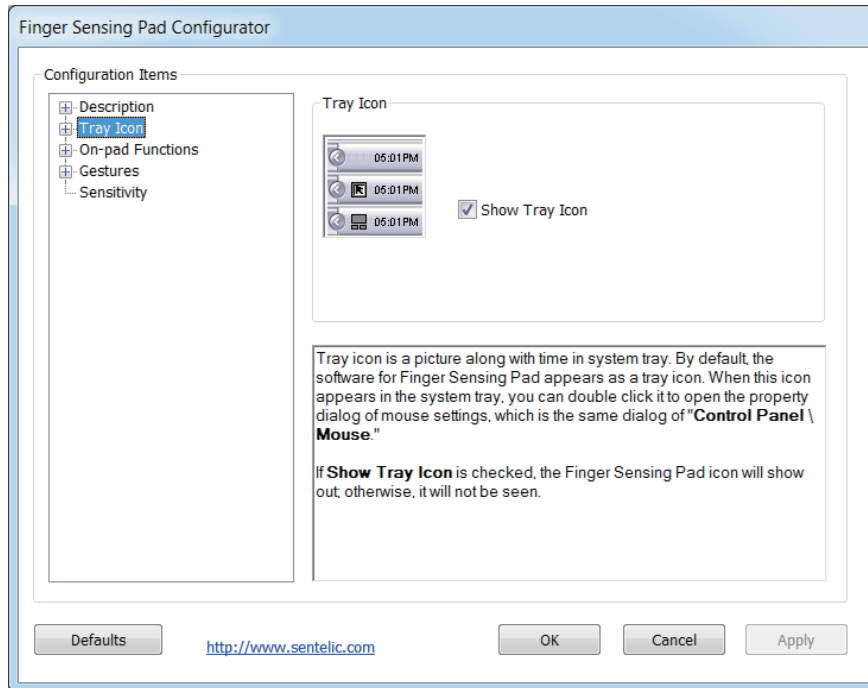
5.1 Setting Tool for the Sensing Pad



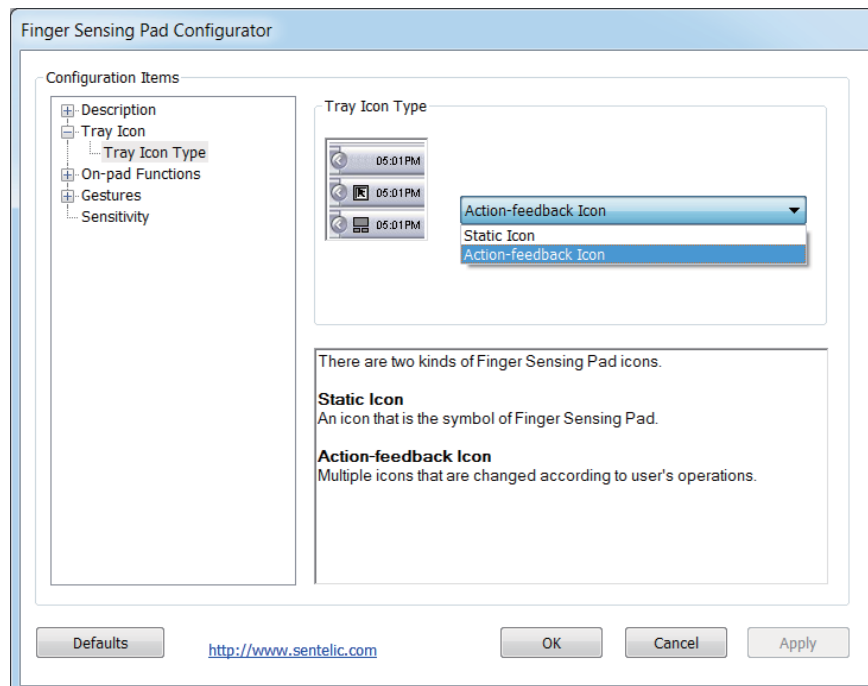
The functions of the buttons in the bottom row :

- **Defaults** : This button can make all the settings in the driver return to the default values (including gesture settings) which are shipped from the factory, and you don't need to click them one by one. After clicking Defaults, there will be a windows asking users to return to the default settings or not, click Y if yes, and click N if no.
- **OK** : After you make sure all the settings are complete, click OK; the system will determine that you have finish the operation and close the window directly.
- **Cancel** : If you do not want to save this setting, just click Cancel, and the driver will end the operation and cancel the setting automatically.
- **Apply** : When there are more than one function settings needing to be done, you can click Apply after any function setting is finished to save it first. The window will not be closed at this time, thus you can continue the next setting, and click OK after all of them are complete.




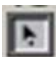
5.2 Tray Icons



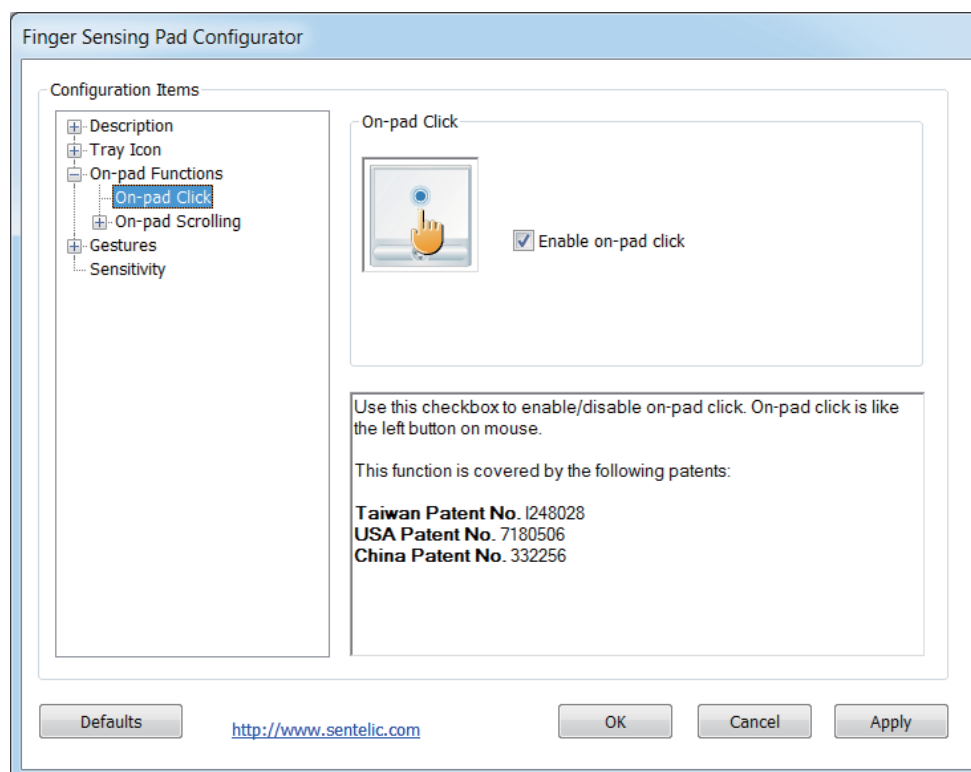
Choose to show the tray icons in the toolbar which is in the bottom right corner or not.



Choose the state of showing the tray icons in the toolbar which is in the bottom right corner.

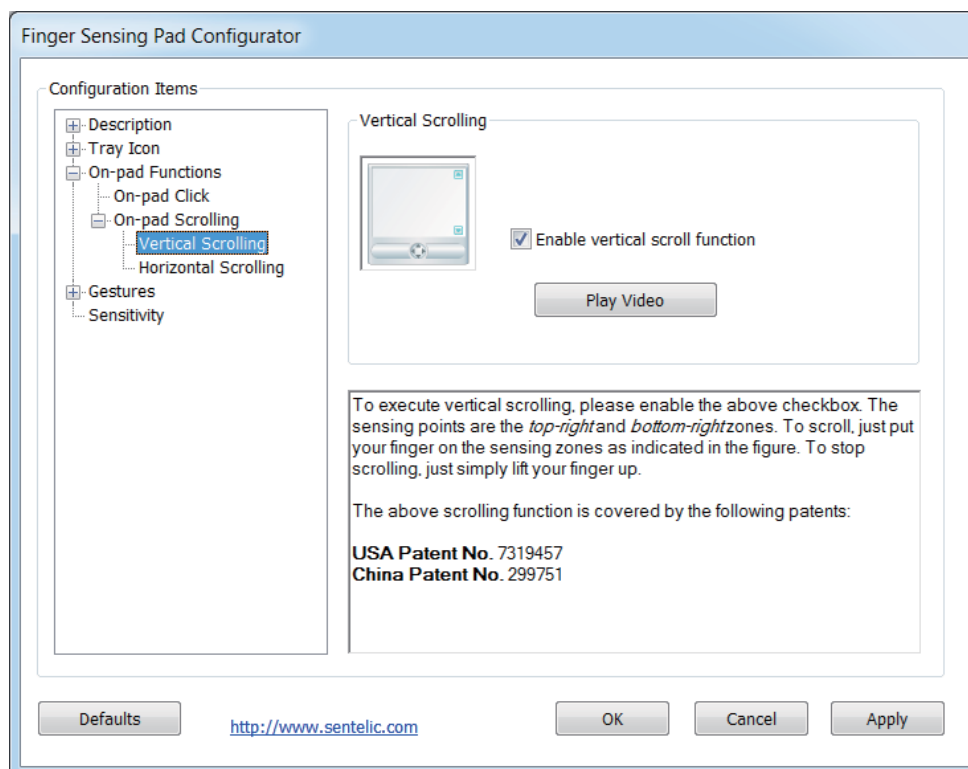
- When "Action-feedback Icon" is selected, the tray icons in the bottom right corner will switch to . (Or switch to  with a right click, or switch to  with a left click)
- If "Static Icon"  is selected, the tray icons in the bottom right corner will not have any changes while any motion is done.

5.3 Functions on the Sensing Pad

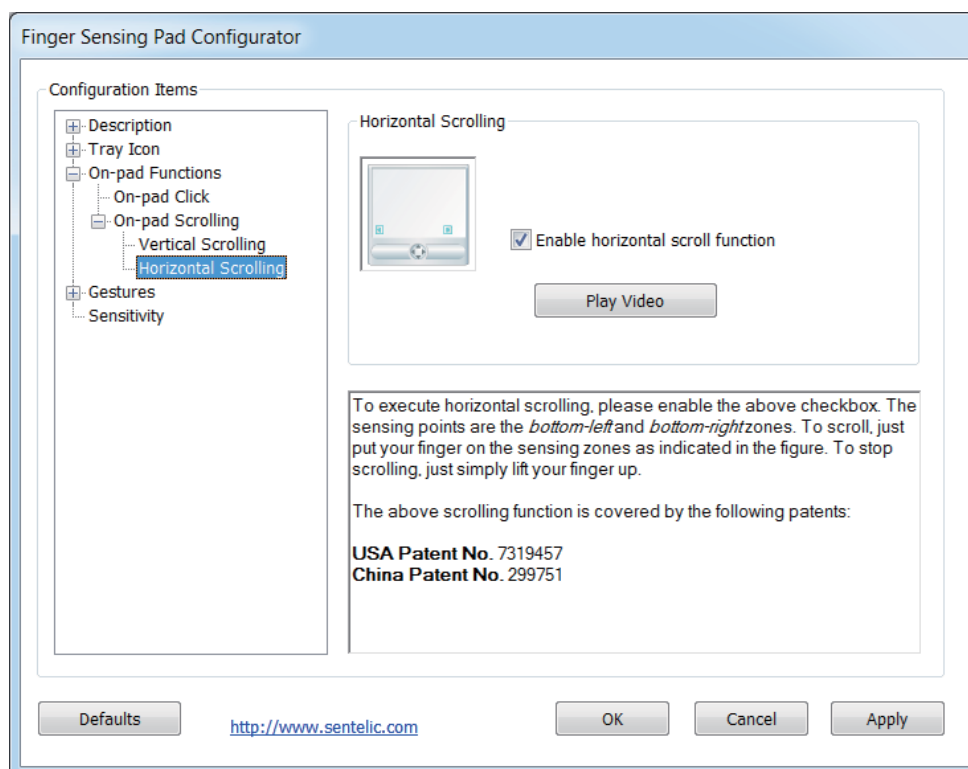


Choose to "**Enable on-pad click**" or not.

When this function is enabled, users can make clicks on the sensing pad. When this function is disabled, users cannot make clicks on the sensing pad.

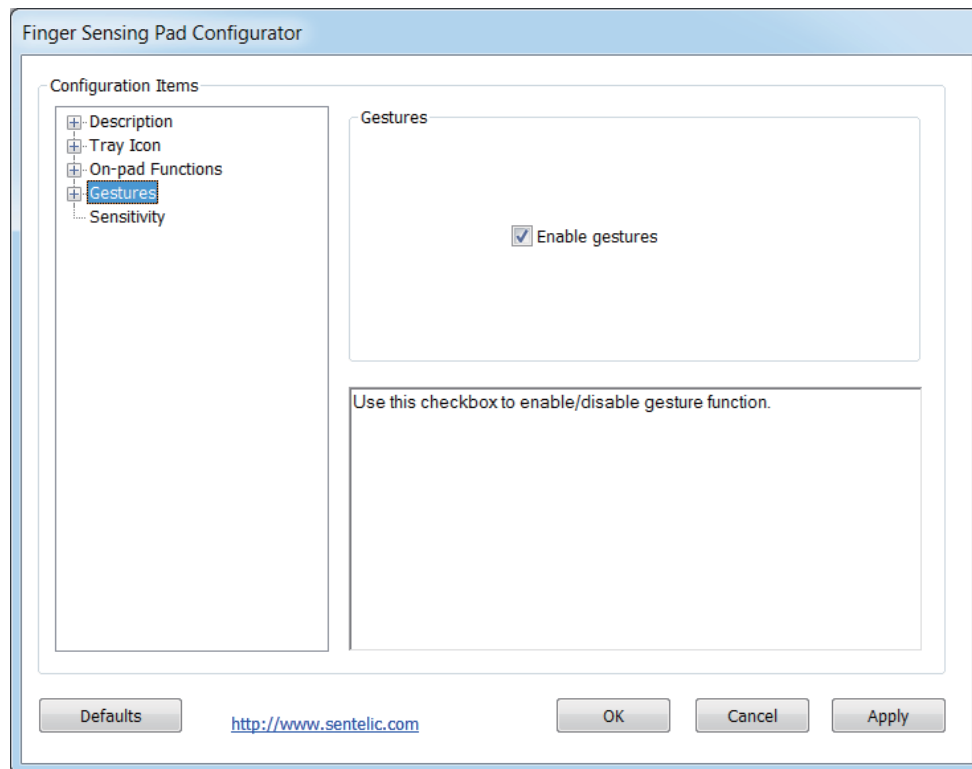


Choose to "Enable vertical scrolling" or not.

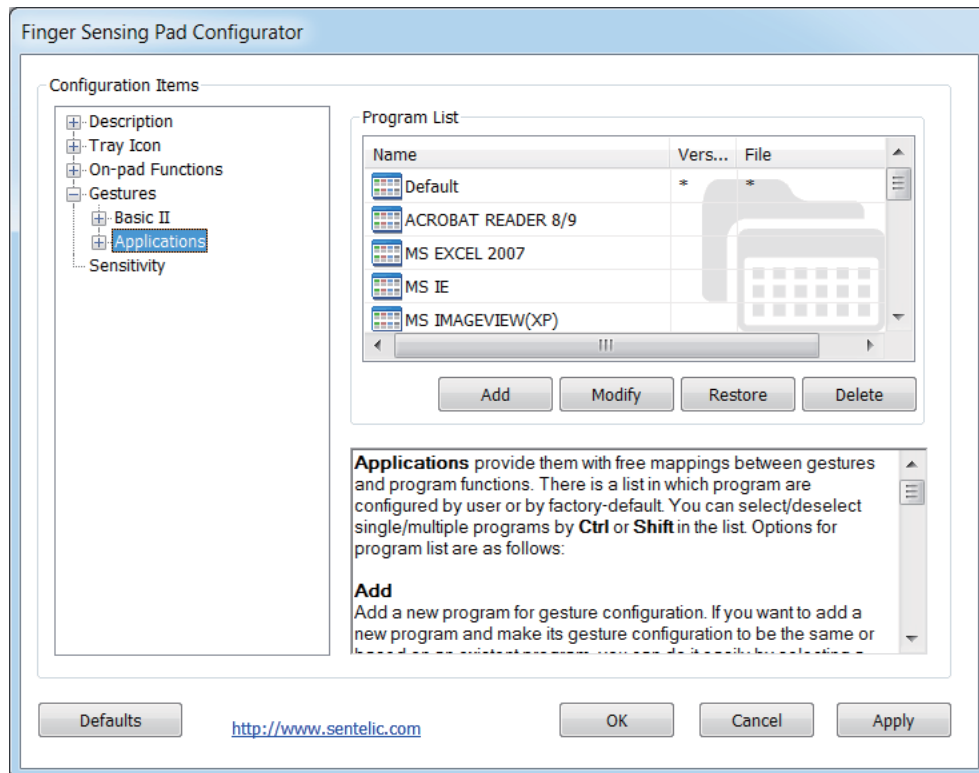


Choose to "Enable horizontal scrolling" or not.

5.4 Gestures

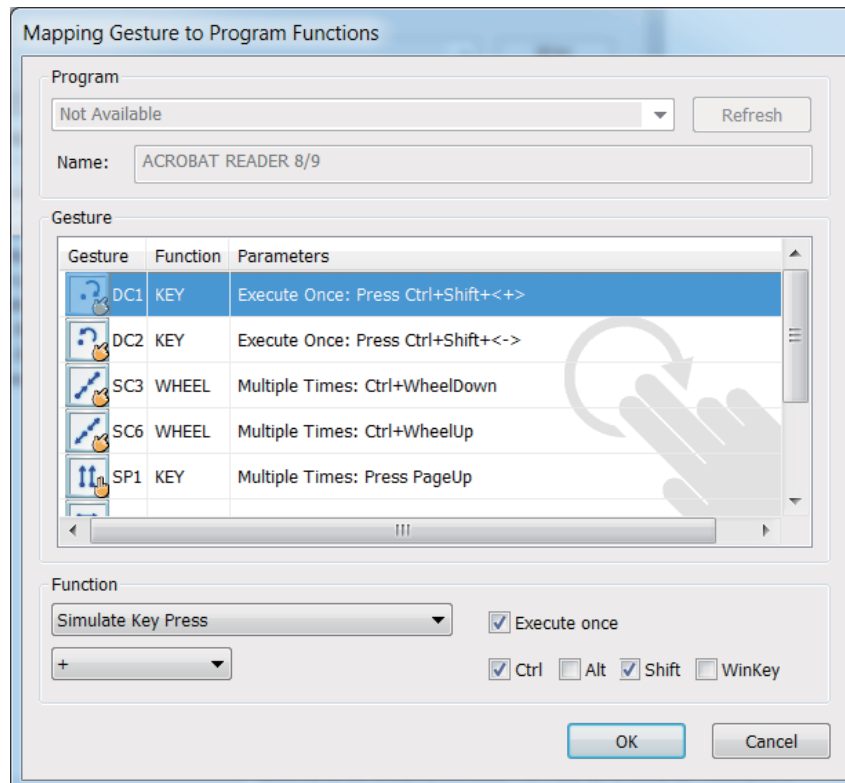


Choose to "**Enable gesture**" or not. If users do not want to use(need to disable) all of the gestures, they can cancel the 3 in "Enable gestures".

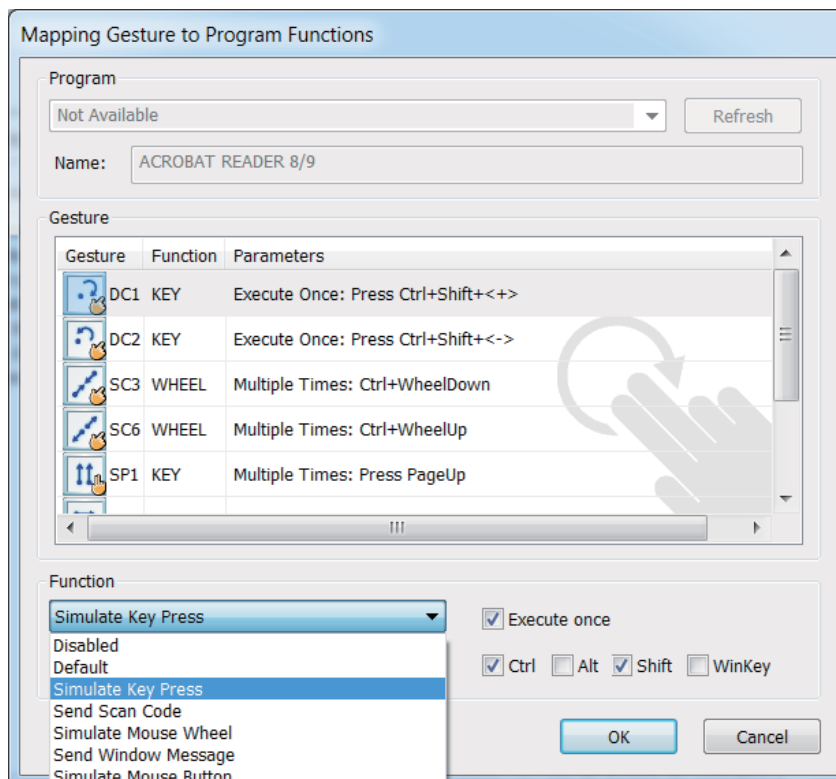


Gesture Application Program list set in this driver. The functions of the upper middle line are as follows:

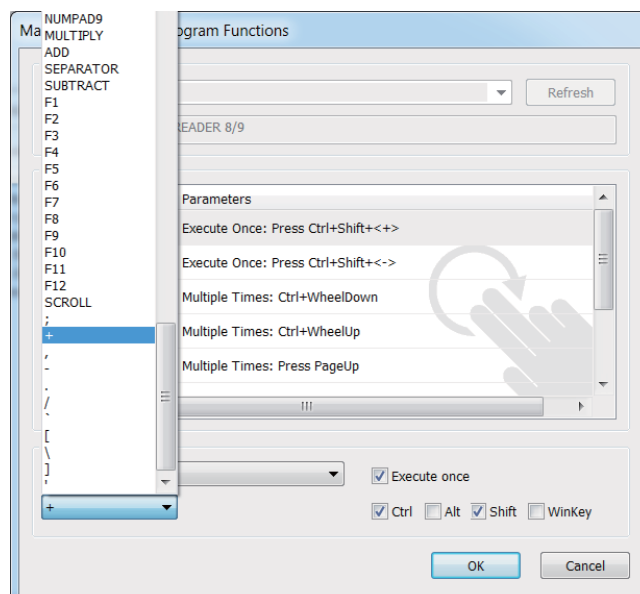
- **Add** : If the application program users want to set is not in the default settings, they can use "Add" to key in its name, but this is limited to the file that is already opened. After clicking the button "Add", users can select the program name in the window to set the gestures. And clicking "Update" can let them type other application program name to set the gestures. If this step is skipped, the driver will set the gestures as "default".
- **Modify** : If you want to change options set in the single application program, you only need to move the cursor to that application program and click "Modify". This button is only applicable for single application program, and its modification steps are the same as the setting methods.
- **Restore** : If users want to restore the functions set by single application program, click "Restore", and then click "Yes" when a little window appear. The default setting of that application program can be restored. And this button is only applicable for single application program.
- **Cancel** : When users don't need certain gestures in the application program, they can click "Cancel" to remove them from the system. The application program selected will be removed directly without entering the gesture mapping window.



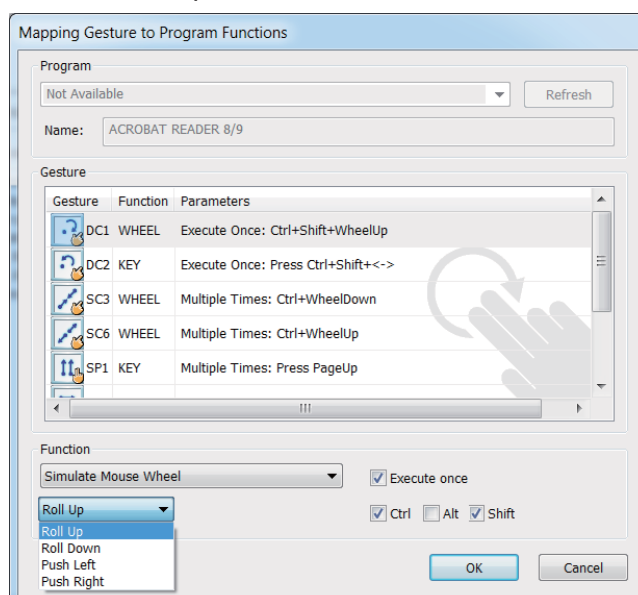
- You only need to choose the application program you want to set and click it twice, then the gesture setting table will be entered, which is shown in the figure on the upper left.(e.g. ACDSeePro2.5)



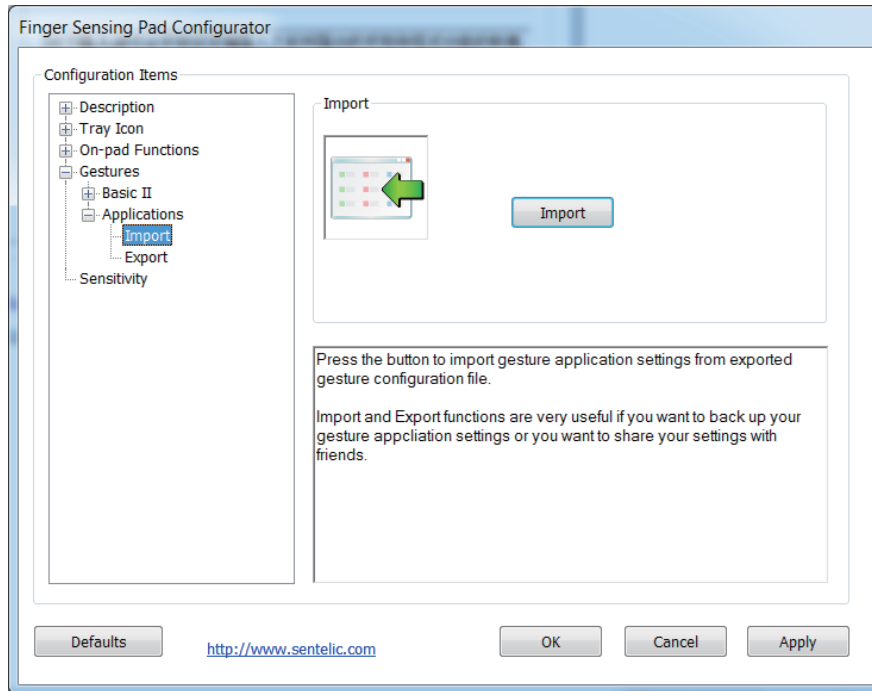
- Users can define the motions supported by the gestures and their effects from the options set by the gestures first, and then choose the related functions, which are shown in the figure on the upper right. The functions supported in the list include "Simulate Key Press", "Simulate Mouse Wheel", "Send Scan Code", "Send Window Message" and "Simulate Mouse Button", and the default functions can also be used.



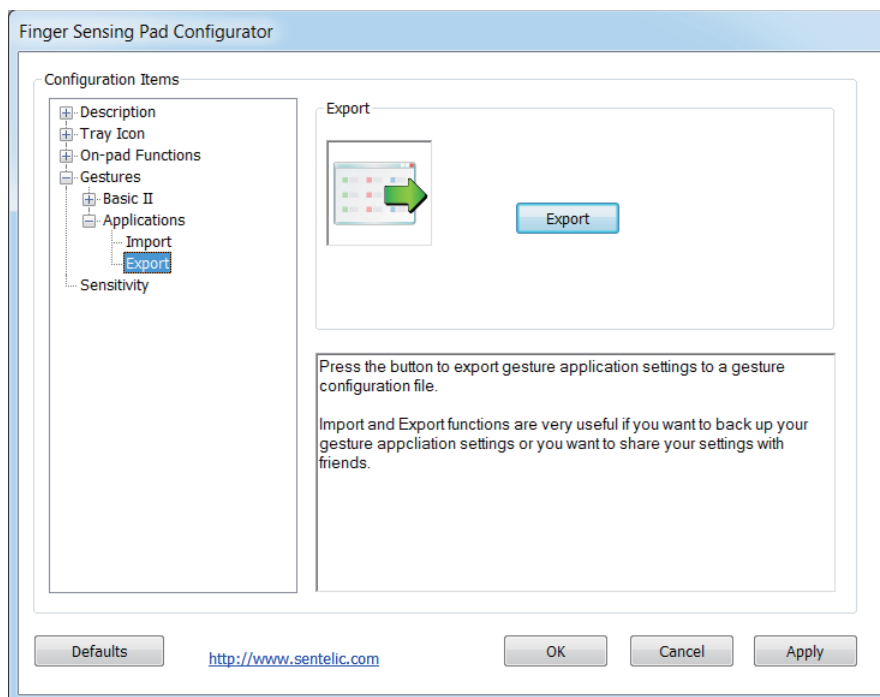
- **Simulate Key Press** : Different gestures can be used to represent keys and hot keys, such as: Ctrl, Alt, Shift, A, B, C, 1, 2, 3 or Ctrl+Backspace, Ctrl+ Alt+ A, etc., which can be define by the users.



- **Simulate Mouse Wheel** : Windows can be moved according to the direction of the gestures, including scrolling up, scrolling down, pushing leftward and pushing rightward.
- **Send Scan Code** : Different gestures can be used to represent the scan codes of buttons on the keyboard; the users want to use this function must know the scan code in advance.
- **Send Window Message** : Users can also set gesture codes to replace the window message.
- **Simulate Mouse Button** : Users can set the left, middle or right button corresponding to the gestures.
- If the setting of "Simulate Key Press" needs to be added, users can choose it from the list or the options in the bottom right corner. Click OK after the setting is complete, and the gestures can be used.
- **Do for only one time** : When users do a gesture, the application program might get more than one gesture code; maybe this is due to the difference of the breadth, length and time of the gesture. This function let users decide to do one gesture with single or continuous motions. For example, when doing page changing or rotation by 90 degrees, tick this button (Enable) to obtain simple motions. But when pictures need to be zoomed in or out successively, the button should not be ticked (Disable), then smooth motion and vivid visual effects can be carried out.



- **Import** : This function can import the gesture setting files saved into the system and allow other application programs to use. A little window and a button will appear after clicking "Import". When you press the button, the window will jump to the saving table, please click the gesture setting file you want to apply and click "Open", then a window will jump out to ask you if you want to cover the original setting. Every application program in the system will ask respectively, click "Y" if you want to cover it and click "N" if you don't want to.



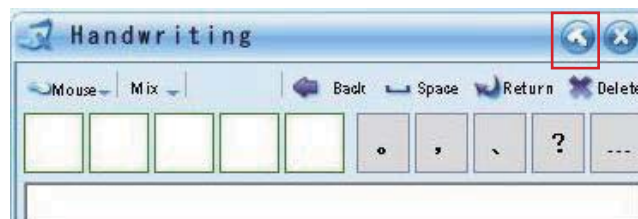
- **Export** : This function can save the set gestures into the computer files, and when other application program needs to use the same set of gestures, it can import the files into the system directly. After clicking "Export" under "Gesture Application", a small button "Export" will appear in the window. After you click this button, it will jump to the saving window, and you just need to key in the file name and click "Save"

6 Handwriting Using Information

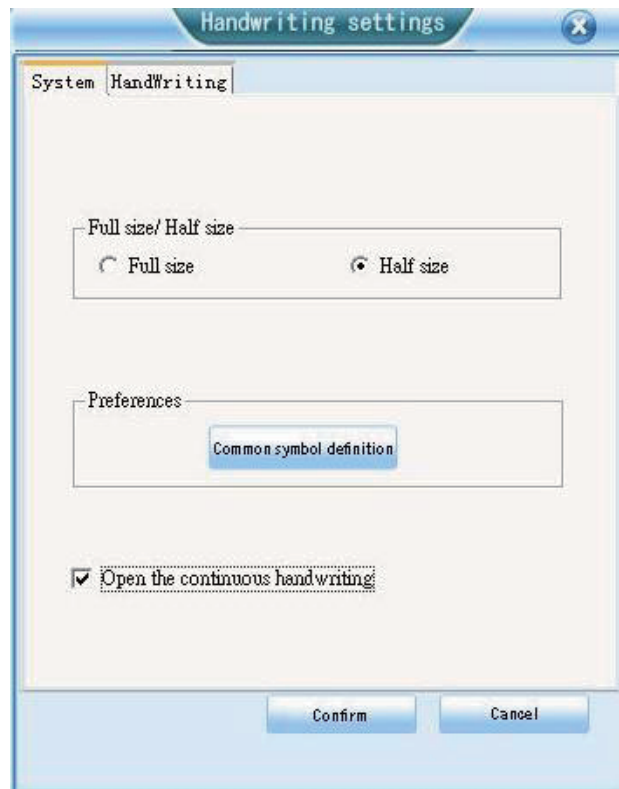
6.1 Handwriting Setting Introduction

6.1.1 Enter the Setting Table

Left click the icon "ChinesePen" twice, at which the following table will appear. Then click the setting section (with red frame) to enter the setting table.



Handwriting table is as follows :



Handwriting setting is divided into two sections: System and Handwriting. The related details are described as follows :

6.1.2 Handwriting Setting : System

Full Size/ Half Size and Preferences are included.

6.1.2.1 Full Size/ Half Size

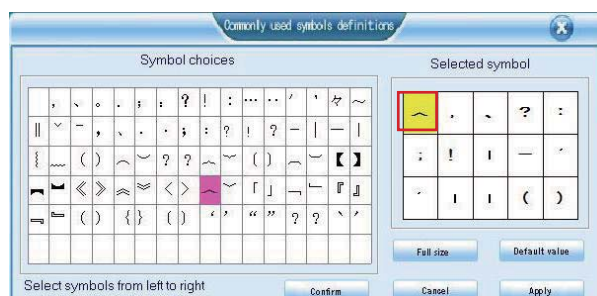
English words, numbers and punctuation marks can be set for full or half size in this section. As the following figure shows, if you want to set for full size, click Full size and click Confirm; if you want to set for half size, click Half size and click Confirm.



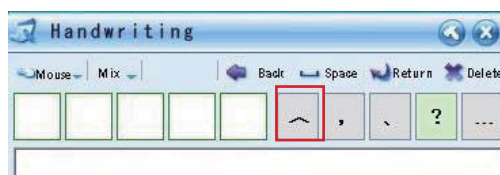
6.1.2.2 Preferences

Common Symbol Definition

- Click "Selected symbol" on the right side (yellow ground color in the following figure) to select the symbol you don't want.
- Make sure the handwriting setting is set at full size or half size. If it is set at full size, remain the full angle; if it is set at half size, click the button "full angle" (red frame in the following figure) to switch to half size.
- Click "Symbol choices" on the left side to choose the symbol you want, and then the "Selected symbol" on the right side will become the same with what you choose.



- Click Confirm. You can see the symbol you have just chosen when coming back to the setting table

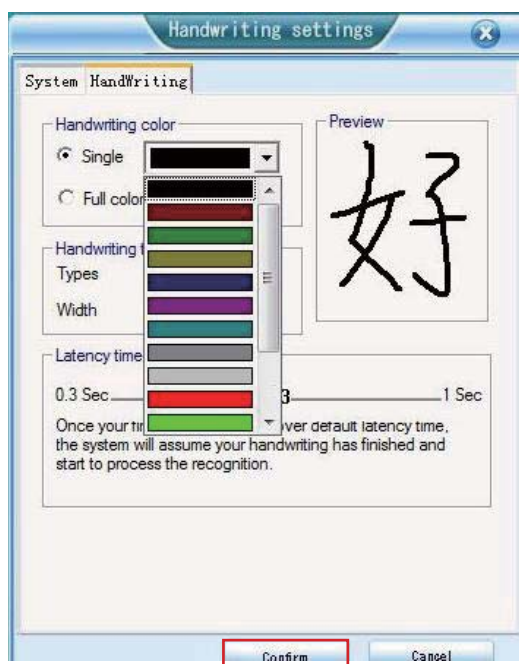


6.1.3 Handwriting Setting: Handwriting

Handwriting Color, Handwriting Type and Latency Time for Finger up are included.

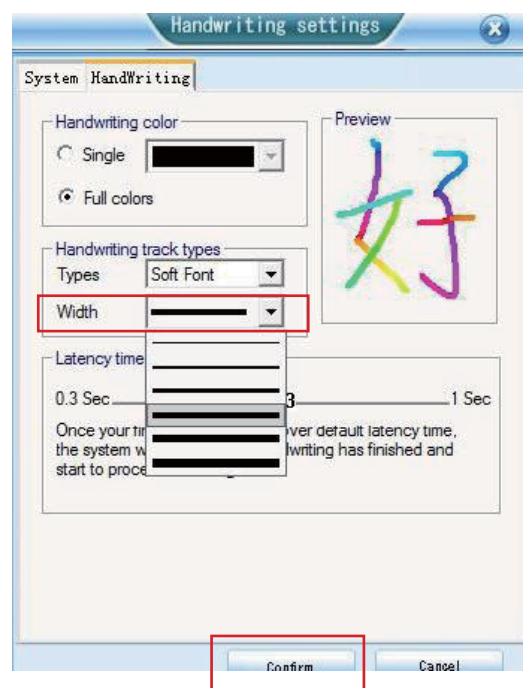
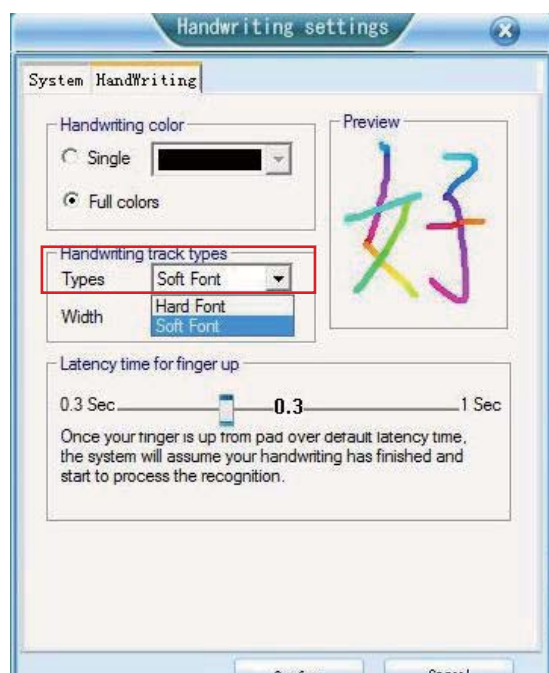
6.1.3.1 Handwriting Color

You can choose the script color when using handwriting; single color and full color can be chosen. If you want to choose single color, you can click the color you need in the following figure and click Confirm.



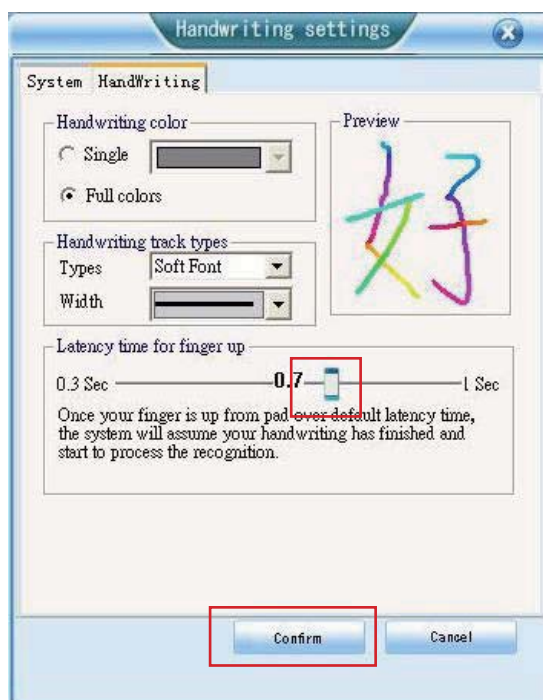
6.1.3.2 Handwriting Type

There are Types (Soft Font and Hard Font) and Width for you to choose. Type let you choose the script type when using handwriting (Soft Font has the effect of spreading out), while Width let you choose the script width. After selecting the setting you want, please click Confirm.



6.1.3.3 Latency Time for Finger up

Latency Time for Finger up refers to the time period of the finger leaving from the handwriting interface. The software will determine whether you end the input according to this time period and choose the closest word from the work bank. You can set Latency Time for Finger up according to your familiarity to handwriting or personal favor, and the time range is from 0.3 to 1 second. (The default value is 0.3 second.) You can move the cursor to the control sluice (with red frame in the following figure), hold the left button, then drag it to the position you want and click Confirm.




6.2 Using Information

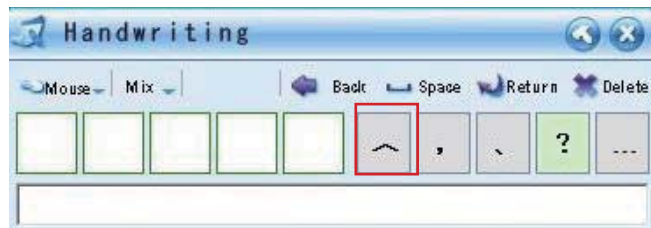
You can start to use handwriting after complete the program installations and settings according to the steps mentioned in the former sections.

6.2.1 Open the Program

You can open it in two ways :

6.2.1.1 Open by the Icon "ChinesePen" on the table

Move the cursor to the Icon "ChinesePen"  on the desk top first, and then give a double click on the left button , the operation table will jump out automatically.



6.2.1.2 Open from "The Programs"

Clicking the icon "ChinesePen" from "Start" → "The Programs" → "ChinesePen" can also open the operation table



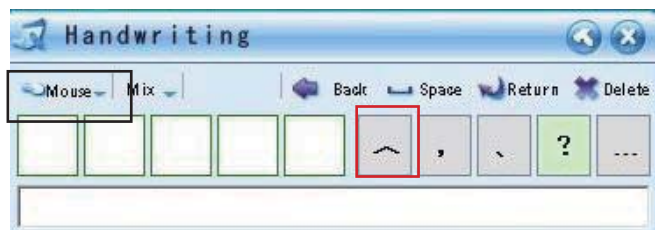
6.2.2 Switch by Mouse/Pen

If the table is in Mouse Mode, the Finger Sensing Pad only supports general mouse functions; you need to switch to Pen Mode for it to support handwriting functions.

There are three switching methods of Mouse/Pen as follows :

6.2.2.1 Switch by Mouse

Move the cursor to "Mouse/Pen"(with red frame in the following figure), and give a left click to do the function switches of "Mouse/Pen".



6.2.2.2 Switch by Keyboard

Press the hot key "Shift"+"F1" on the keyboard (hold "Shift" and then press "F1"), the function switches of "Mouse/Pen" can be done.

6.2.2.3 Switch by Yo-pad

If you use Yo-pad, you can also use the Function Selection Area/ Handwriting button to do function switches of "Mouse/Pen".



6.2.3 Language Switches

The software will run according to the language you choose to install when it is open at the first time. If you want to switch to other languages, please switch the function state to Pen Mode first, and use the hot keys Alt+(1~6) (hold Alt and press numeric key 1~6).

What languages do 1~6 stand for respectively? Please refer to the following table:

Hot Keys	Languages	Table Icons
Alt + 1	Simplified Chinese	
Alt + 2	Traditional Chinese	
Alt + 3	English	
Alt + 4	Japanese	
Alt + 5	Korean	
Alt + 6	Cantonese	

6.2.4 Do the Handwriting

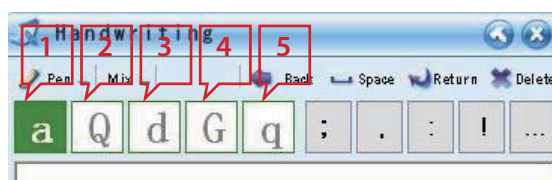
After we choose the language we want, the handwriting can be started!

Open the coverall software that you want to use (e.g. MS Word, Excel, PowerPoint, etc), start the handwriting program, and make sure the handwriting table is in Pen Mode not Mouse Mode, then you can write on the Finger Sensing Pad or Yo-pad with your finger directly. After the writing, (1) recognition results (2) associative words will be shown on the table.

In the next section, we will not only explain how to select recognition results and associative words, but introduce other functions and using methods.

6.2.4.1 Select recognition results

The recognition results will be shown directly in the position of the cursor. If the words the software recognizes are not what you want, and you want other words the table shows, you can choose them by numeric key 1~5, then the software will change the words by what you have chosen. For example, the word recognized in the following figure is "a", and the word "a" will appear at the place where the cursor stays. If it is not the word you want, please press numeric key directly, then the words staying at the cursor will be changed to what you have chosen immediately. Take the following figure for example, select 2 for Q, select 3 for d, select 4 for G, and select 5 for q.

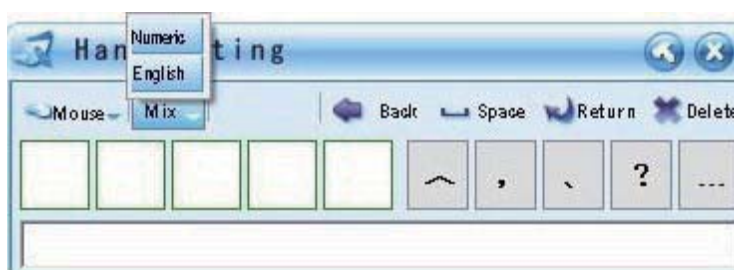


※ **Application of Backspace** : If all of the words you want are in the recognition results, like the example mentioned above, you want to input "ad", and the word "a" has already appeared in the position of the cursor, please press Backspace on the keyboard and select "3", then you can get the word "ad". But if you choose "3" directly, the original "a" will be replaced by "d", and you will get the word "d" instead!

6.2.4.2 Switch between English/Numeric/Mix

There is a switching interface on the table (as shown in the following figure), and if you only want the software to recognize English, number or Chinese, you can use this to improve the recognition rate.

Click the place with red frame first, and the mode choices will appear, then left click the mode you want.



If you switch to English Mode, no matter what you write, English characters will be recognized, in the same way, if you switch to Numeric Mode, only numbers will be recognized. Only when you switch to Mix Mode, all the possible words, numbers or punctuation marks will be recognized.

※**The effect of this function** : Since the words like English character "l" and number "1" are similar, recognition failure may be caused easily. And with this function, this kind of inconvenience can be avoided, thus the recognition rate can be enhanced.

6.2.4.3 Application of other functions

- **Back** : It has the same effect with Backspace on keyboard, which means deleting the character on the left side of the cursor and moving a space backward.
- **Space** : It has the same effect with Space on keyboard, which means moving a space forward.
- **Return** : It has the same effect with Enter on keyboard, which means switching to the next line.
- **Delete** : It has the same effect with Delete on keyboard, which means deleting the character on the right side of the cursor.
- **Punctuation Mark** : There are five often-used punctuation marks provided for you to choose on the right side of the recognition results.

※ These functions do not have hot keys; please move the cursor to the related button and give it a left click when you want to use them.

6.3 Often-asked Questions (Q&A)

6.3.1 Can't open the "ChinesePen"

- (1) If the table "Please check if the Finger Sensing Pad has been fully connected", this means the hardware is not installed or there is something wrong with the hardware installation. Please check if Yo-pad host and the driver are installed well.

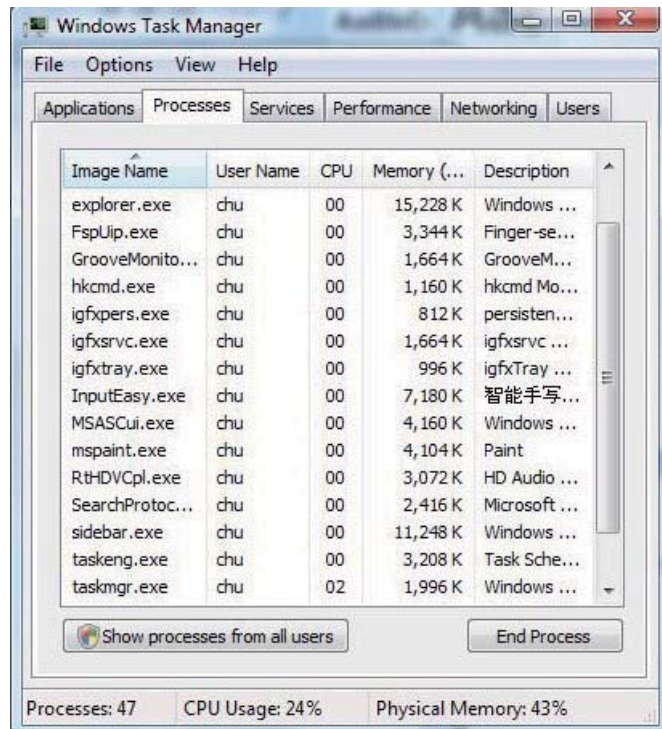
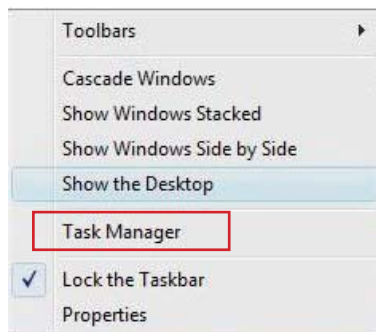


- (2) If the handwriting table can't be opened when clicking the icon "ChinesePen" on the desktop, please check if the tray icon exists in the toolbar. If so, you can move the cursor to the icon and give a double click on the left button to open it

6.3.2 Can't close the "ChinesePen"?

If the "ChinesePen" can't be closed according to the normal procedures, please follow the following steps to close it compellingly :

- (1) Move the cursor to the toolbar and give a right click, then click "Task Manager" after the following options appears.



- (2) Click "Processes" and choose the program "InputEasy.exe", then click "End Process" to close it compellingly.

6.3.3 Can handwriting and keyboard input be used at the same time?

Since enabling handwriting and keyboard input might cause input disorder, we don't recommend using handwriting and keyboard at the same time. Please disable handwriting input first before switching back to keyboard input.

6.3.4 Can't choose word types in Word and Outlook?

Due to the recognition problems of this two coverall programs, only the word type "simsun" can be shown when using handwriting. Please finish the input first and then change to other word types manually.

6.3.5 Are associative words only provided in Chinese?

Yes, associative words are provided only in Chinese.

6.3.6 The cursor disappears while using handwriting?

Even if the cursor disappears, the handwriting can be used under most of the situations. If the words you input appear on the handwriting table but aren't imported into the application program (e.g. MS-WORD), you can switch back to the mouse mode first and click the place you want the input to be, then the cursor should appear.

6.3.7 Can users choose Japanese installation under Chinese or Korean language system?

We only recommend the installation of default language and English, which means choosing language by the system itself or choosing English installation. This installation process will reduce the occurrence of decoding characters

6.3.8 Why can't some of the recognition results of simplified Chinese be shown under Korean language system?

Please install corresponding word type files of simplified and traditional Chinese in non-Chinese system, which can avoid the occurrence of decoding characters.

6.3.9 Is enabling multi-word writing effective?

Yes. If you want to use multi-word writing, please tick "enable multi-word writing" in the handwriting setting.

6.3.10 Why can't some Cantonese words be input?

Please set in accordance with (1) word type: "PMingLiU HKSCS" (2) Choose "Get simplified when choosing simplified, get traditional when choosing traditional" in the recognition center, and the words should be shown normally.

6.3.11 Why do the recognition results appear before the handwriting is done?

Maybe this is because the latency time for finger up is too short; you can change its setting.

6.3.12 How to distinguish among Chinese, English and numbers when using handwriting?

You can improve the recognition effects by using the "English/Numeric/Chinese/Mix switches"

6.3.13 Why can't users switch languages by hot keys?

Please make sure the table is in the Pen Mode. If it is under the Mouse Mode, the hot key can't work.

6.3.14 Why can't hot keys be used to select "recognition results" and "associative words"?

Please make sure the table is in the Pen Mode. If it is under the Mouse Mode, the hot key can't work.

6.3.15 Why can't the symbols I choose in the "Common symbol definition" appear on the table?

Maybe this is due to the selection of Full size/ Half size. Full size/ Half size state of the often-used symbols are set individually. (The settings are done after switching through "Full size/ Half size" button.)

7 Specification

7.1 Product Name: Wireless Hand Write Touchpad Devices

Model : RF Yo-pad

Trademark : Yomore

7.2 Function Description

7.2.1 USB2.0 Supported : It supports common-used bus USB2.0, and is also compatible with common-used bus USB1.1 at the same time.

7.2.2 Wireless Transmission Supported : RF2.4G transmission.

7.2.3 Left and Right Button Supported : It supports left and right button in Mouse Mode.

7.2.4 Scrolling Function Supported : It can support vertical and horizontal scrolling function at the same time.

7.2.5 Function Modes Supported : It provides four buttons for function switching.

- **Mouse Mode :** mouse function and multi-finger function can be used under this mode; in multi-finger function, eight gestures are provided.
- **Hand-Writer Mode :** It supports ChinesePen handwriting software, and provides handwriting recognition in traditional Chinese/Simplified Chinese/English/Japanese/Korean.
- **Keypad Mode :** It supports functional keys such as up, down, left, right, insert and delete.
- **Numlock Mode :** It supports keys such as number 0~9, +, -, *, /, Tab and →.

7.3 Operating System Supported

7.3.1 Microsoft Windows XP

7.3.2 Microsoft Vista

7.3.3 Microsoft Windows 7

7.4 Electric Features

Item	Specification
Battery Size	AAA x 2
Battery Type	NiMH or Alkaline
Input Voltage Range	3.2V~5V
Working Temperature	0~50°C
Connection Type	USB2.0 full speed support(12Mbps)
RF BAND	2.4GHz ISM Band
RF transmission distance	5m

7.5 Federal Communications Commission Interference Statement

This equipment has been tested and found to comply with the limits for a Class B digital device, pursuant to part 15 of the FCC Rules. These limits are designed to provide reasonable protection against harmful interference in a residential installation. This equipment generates, uses and can radiate radio frequency energy and, if not installed and used in accordance with the instructions, may cause harmful interference to radio communications. However, there is no guarantee that interference will not occur in a particular installation. If this equipment does cause harmful interference to radio or television reception, which can be determined by turning the equipment off and on, the user is encouraged to try to correct the interference by one or more of the following measures:

- Reorient or relocate the receiving antenna.

- Increase the separation between the equipment and receiver.
- Connect the equipment into an outlet on a circuit different from that to which the receiver is connected.
- Consult the dealer or an experienced radio/ TV technician for help.

※ **CAUTION:**

Any changes or modifications not expressly approved by the grantee of this device could void the user's authority to operate the equipment.

This device complies with Part 15 of the FCC Rules. Operation is subject to the following two conditions: (1) this device may not cause harmful interference, and
(2) this device must accept any interference received, including interference that may cause undesired operation.