

HICELLER100 instruction manual

This product is not designed for end user. This product is used as a part of construction machinery. Therefore, this manual shows the technical information for engineers.

1. Overview

Input voltage	:	DC+8 to +32 V
Current consumption	:	Standby : 36 mA
	:	Transmission : 120 mA
Operating temperature/humidity ranges	:	-20°C to 70°C 5 to 95%
Storage temperature/humidity ranges	:	-30°C to 85°C 5 to 95%

2. External terminal

- GPS antenna terminal : BNC-J (50 Ω)
- External interface : MX23A34NF1 (JAE)

3. Operation overview

- 1) Positioning by the GPS
- 2) Data I/O with the external interface (serial communication/external terminal)
- 3) Transmission of the data 1) and 2) through the mobile communication network

4. Configuration diagram of a mobile communication terminal

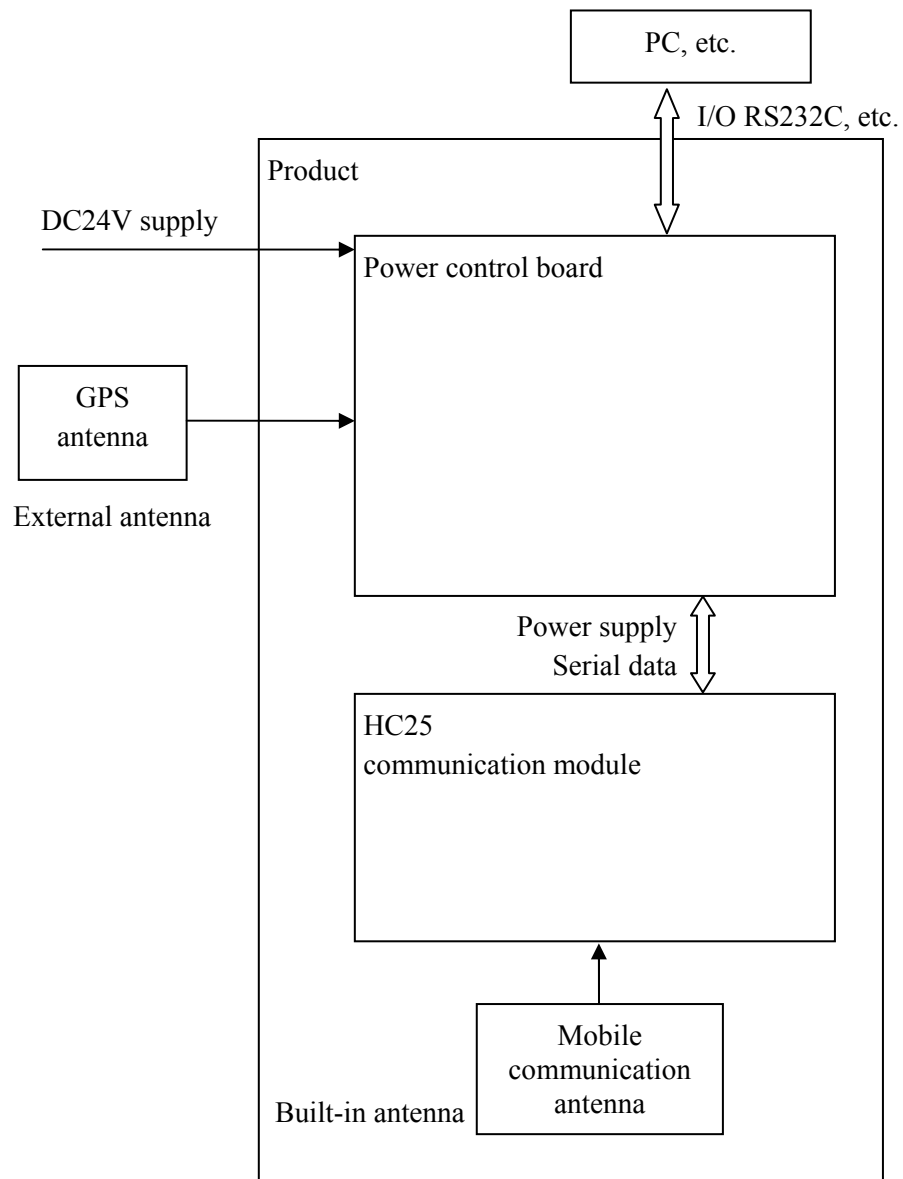
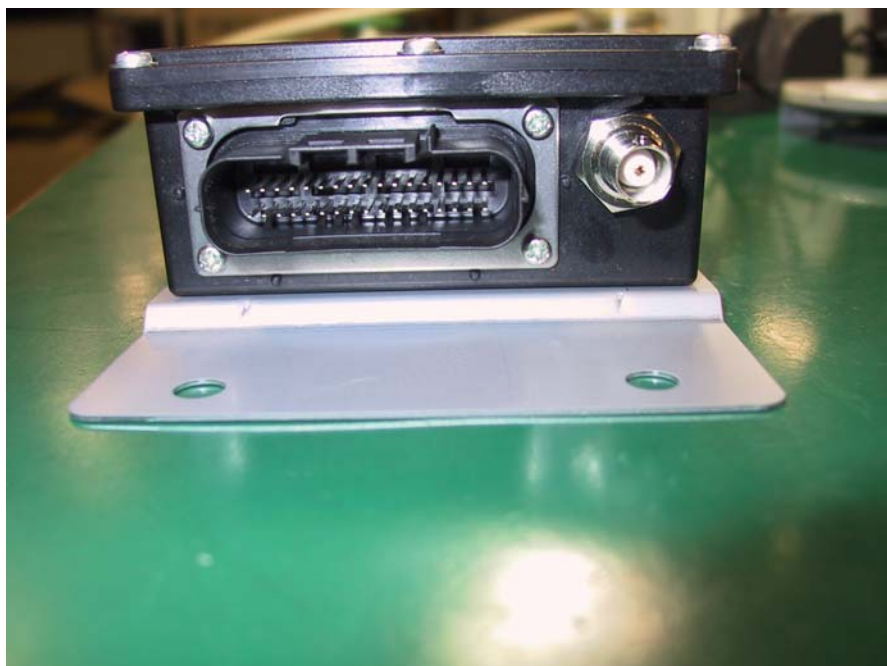
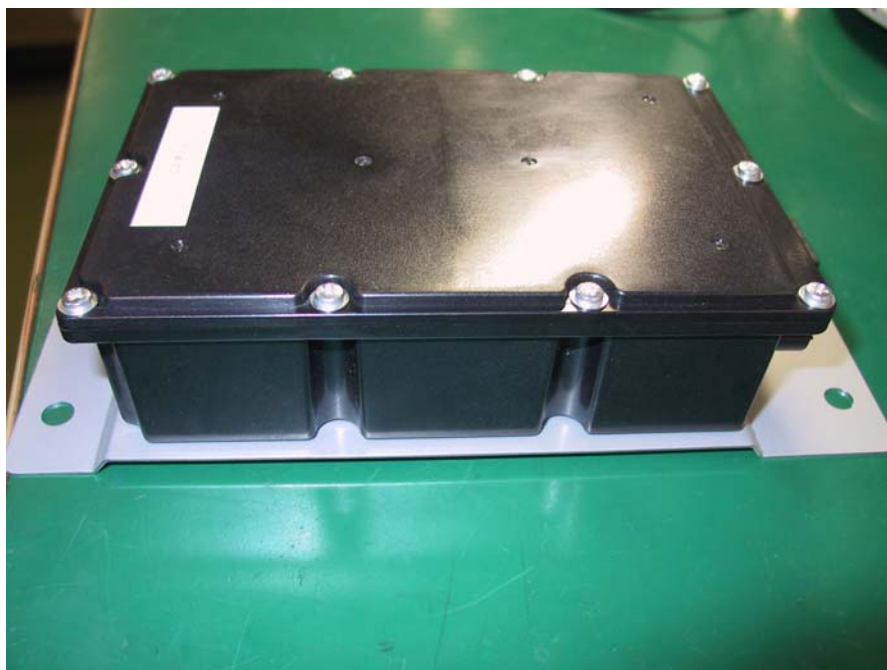
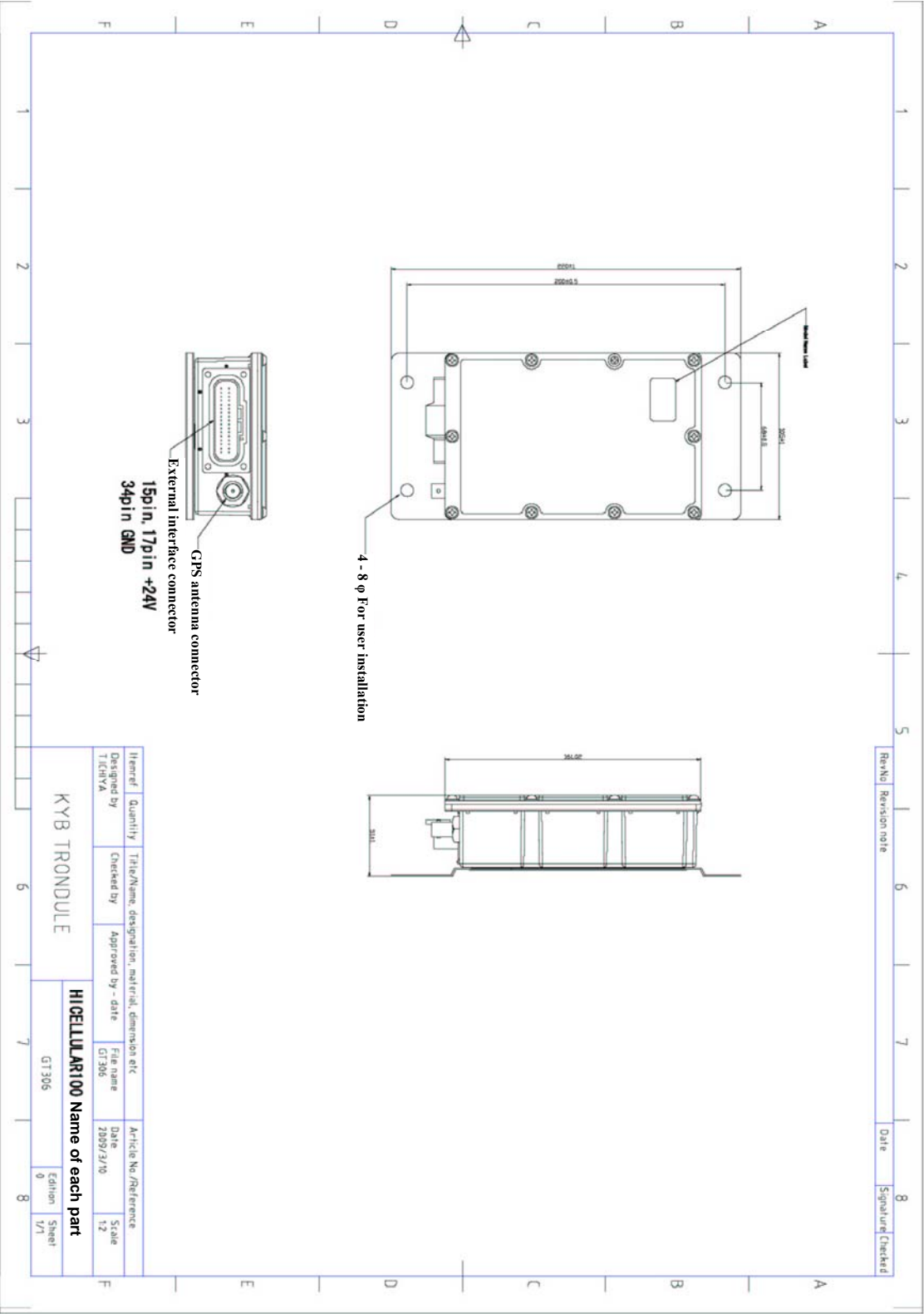


Photo of HICELLER100



Outline drawing of HICELLER100



1. **Statement according to Part 15.105**

This equipment has been tested and found to comply with the limits for a Class B digital device, pursuant to Part 15 of the FCC Rules. These limits are designed to provide reasonable protection against harmful interference in a residential installation. This equipment generates, uses and can radiate radio frequency energy and, if not installed and used in accordance with the instructions, may cause harmful interference to radio communications. However, there is no guarantee that interference will not occur in a particular installation. If this equipment does cause harmful interference to radio or television reception, which can be determined by turning the equipment off and on, the user is encouraged to try to correct the interference by one or more of the following measures:

1. Reorient or relocate the receiving antenna.
2. Increase the separation between the equipment and receiver.
3. Connect the equipment into an outlet on a circuit different from that to which the receiver is connected.
4. Consult the dealer or an experienced radio/TV technician for help.

2. **Statement according to Part 15.19 and Canada RSS-210**

This device complies with Part 15 of the FCC Rules and with RSS-210 of Industry Canada. Operation is subject to the following two conditions:

- (1) this device may not cause harmful interference, and
- (2) this device must accept any interference received, including interference that may cause undesired operation.

3. **Statement according to Part 15.21**

Changes or modifications made to this equipment not expressly approved by Hitachi Construction Machinery Co., Ltd. may void the FCC authorization to operate this equipment.

4. **Statement according to RF Exposure**

Radiofrequency radiation exposure Information:

This equipment complies with FCC radiation exposure limits set forth for an uncontrolled environment. This equipment should be installed and operated with minimum distance of 10 cm between the radiator and your body and at least 20 cm between the radiator and the head of all persons.

This transmitter must not be co-located or operating in conjunction with any other antenna or transmitter.