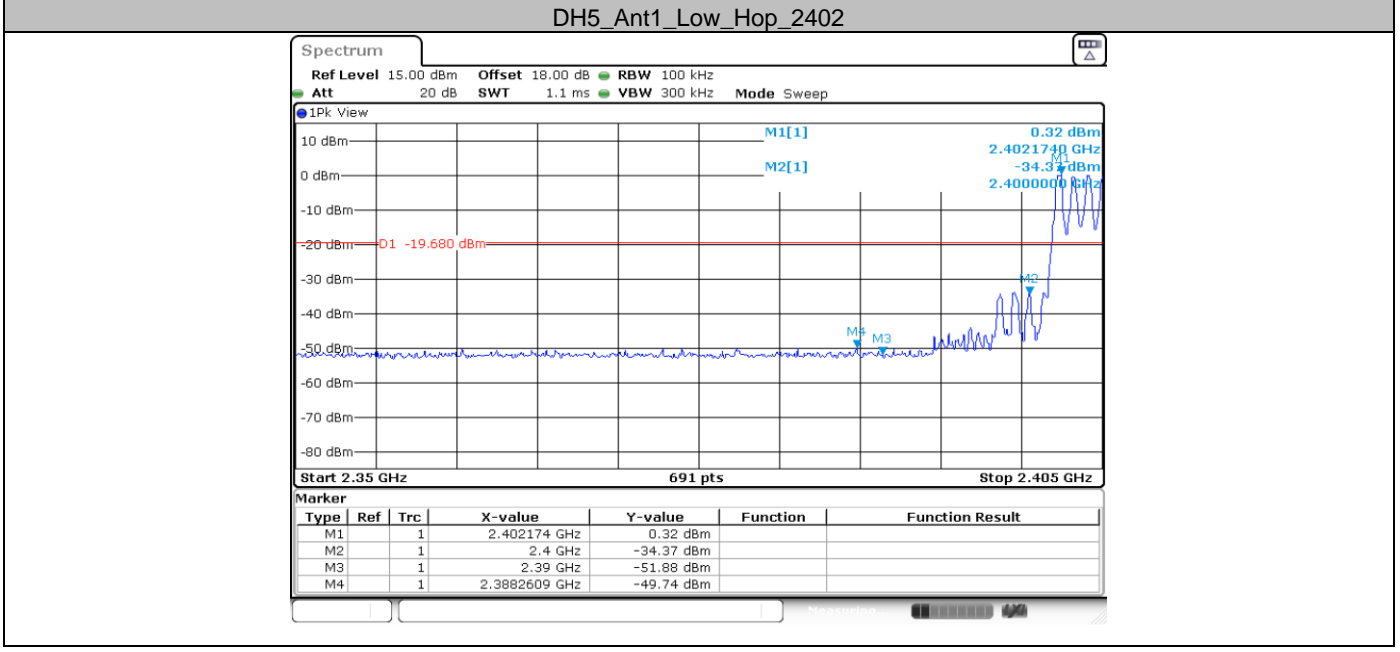
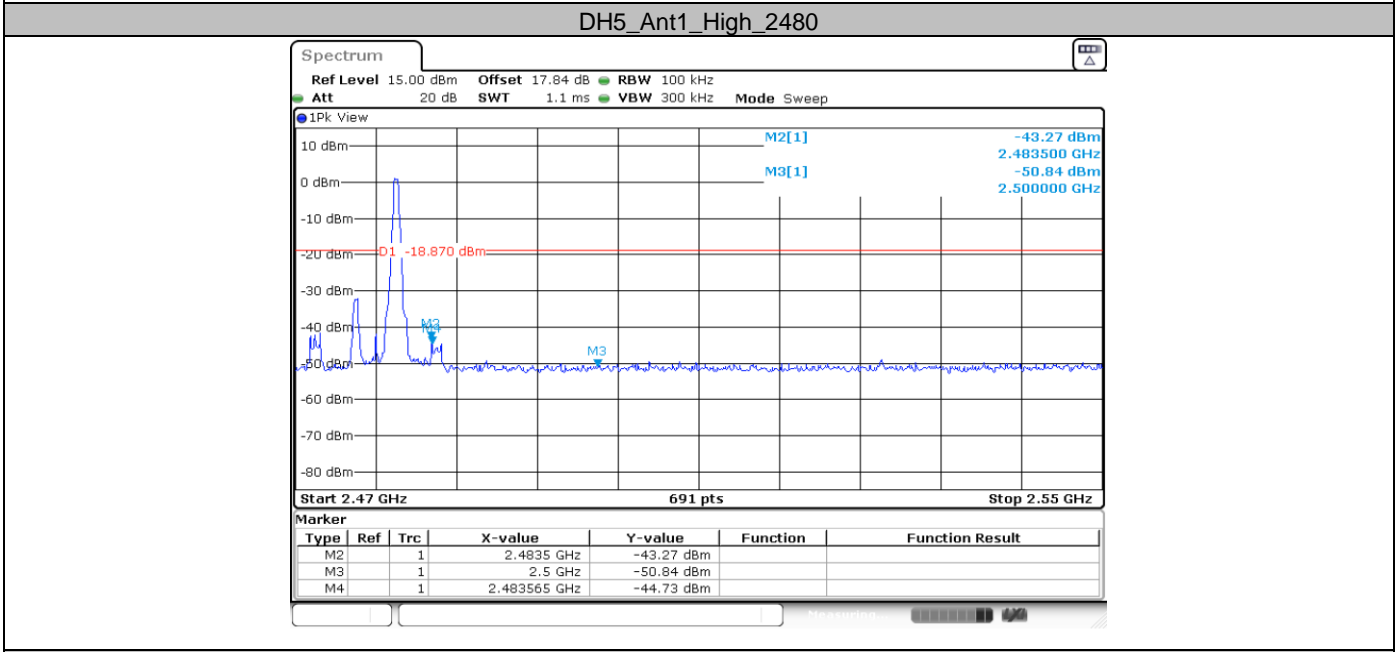
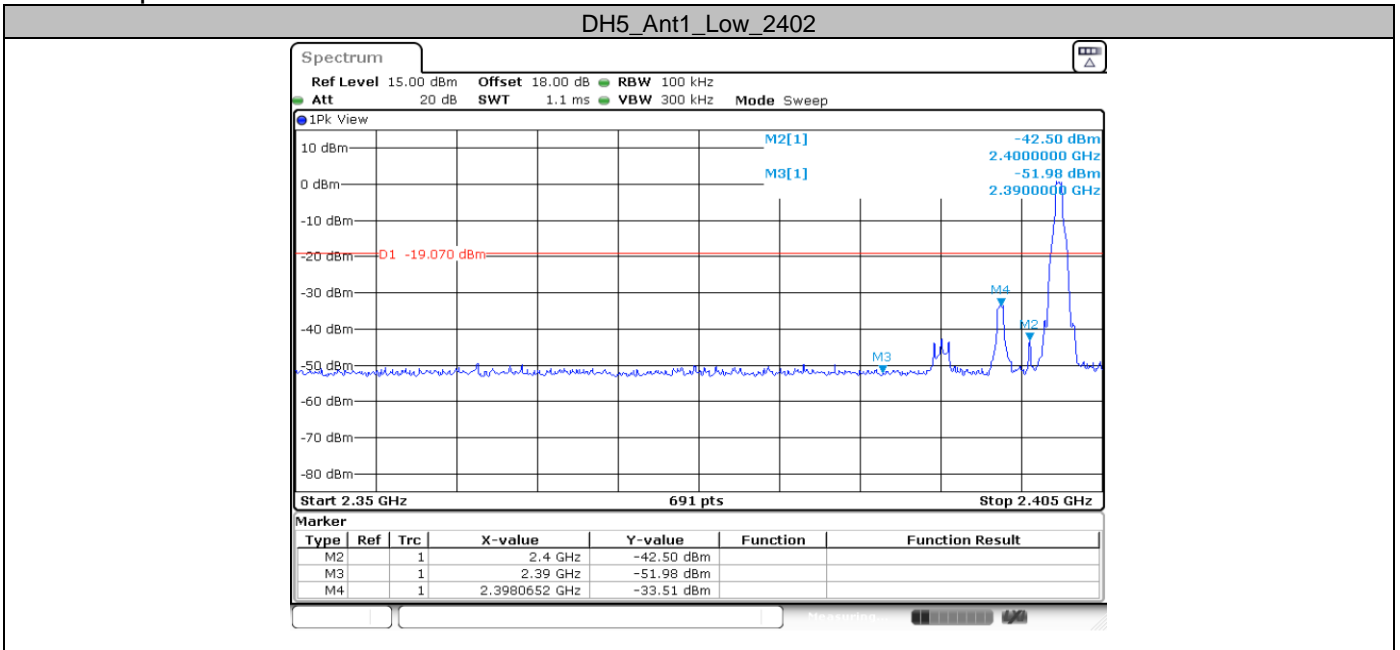


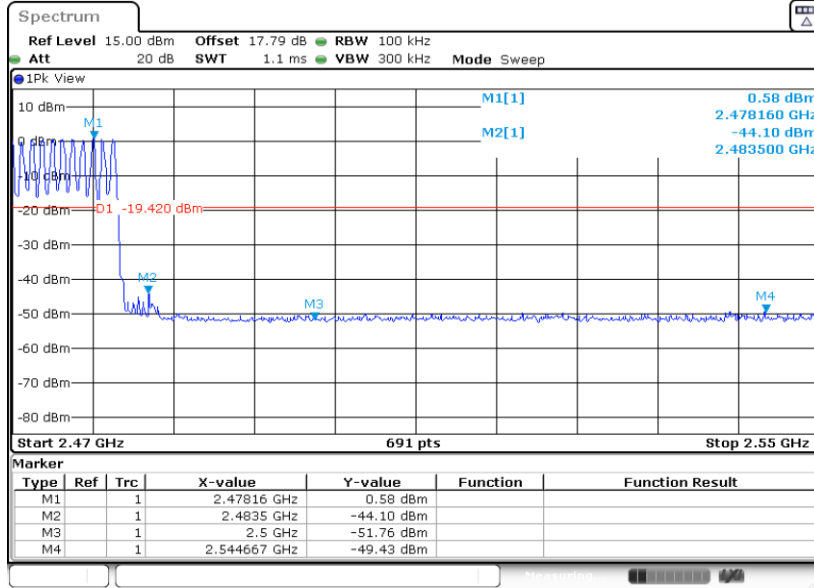
Appendix G: Band edge measurements  
 Test Result

Test Mode	Antenna	Ch Name	Freq(MHz)	Ref Level [dBm]	Result [dBm]	Limit [dBm]	Verdict
DH5	Ant1	Low	2402	0.93	-33.51	≤-19.07	PASS
		High	2480	1.13	-44.73	≤-18.87	PASS
		Low	Hop_2402	0.32	-49.74	≤-19.68	PASS
		High	Hop_2480	0.58	-49.43	≤-19.42	PASS
2DH5	Ant1	Low	2402	0.69	-33.87	≤-19.31	PASS
		High	2480	0.99	-43.21	≤-19.01	PASS
		Low	Hop_2402	-0.25	-50.22	≤-20.25	PASS
		High	Hop_2480	0.60	-49.39	≤-19.4	PASS

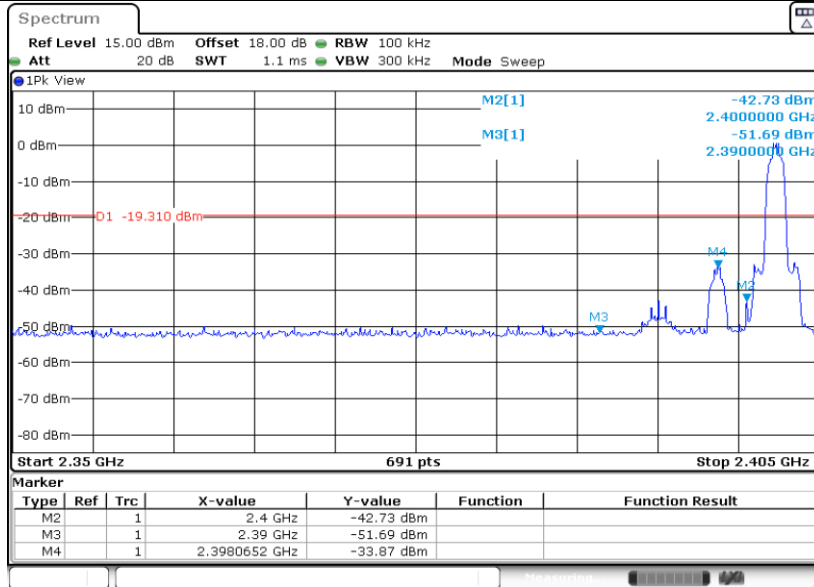
Test Graphs



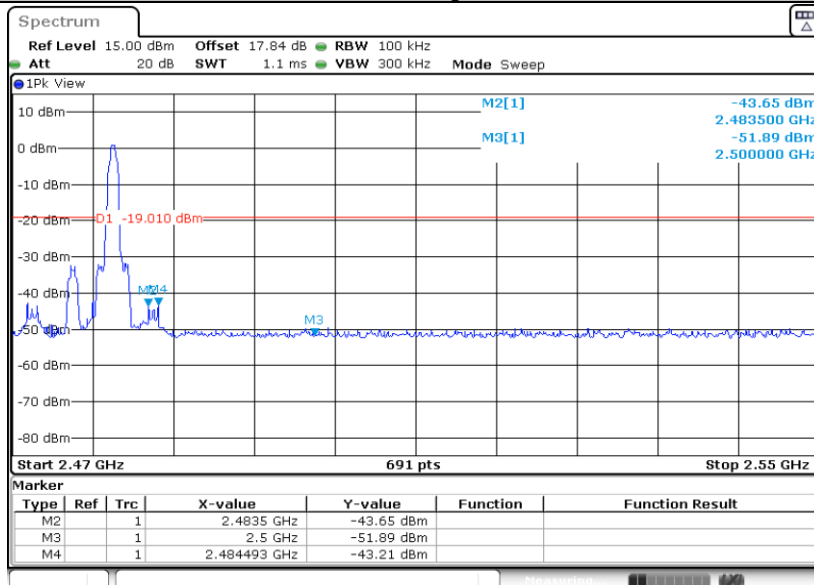
DH5\_Ant1\_High\_Hop\_2480



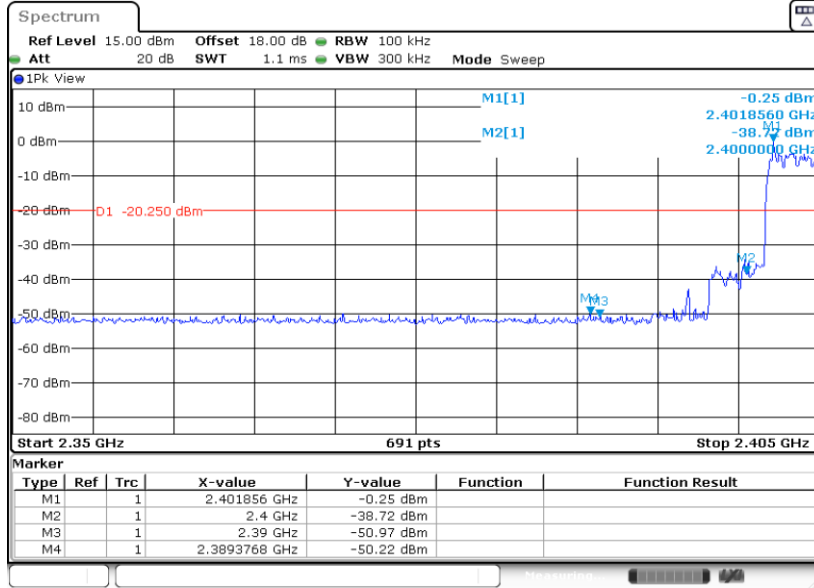
2DH5\_Ant1\_Low\_2402



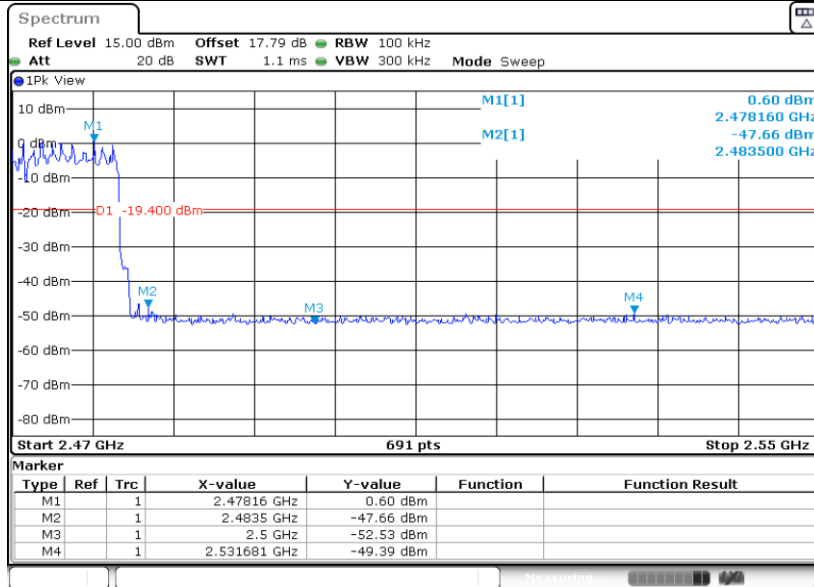
2DH5\_Ant1\_High\_2480



2DH5\_Ant1\_Low\_Hop\_2402



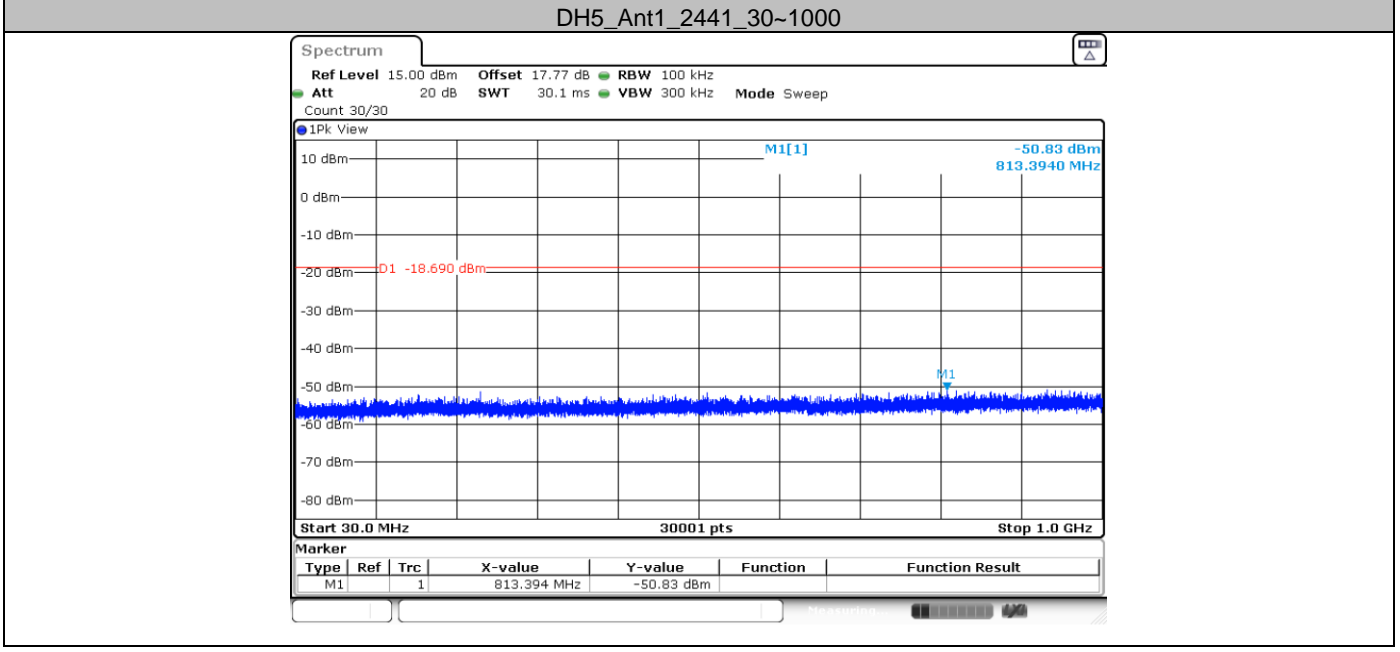
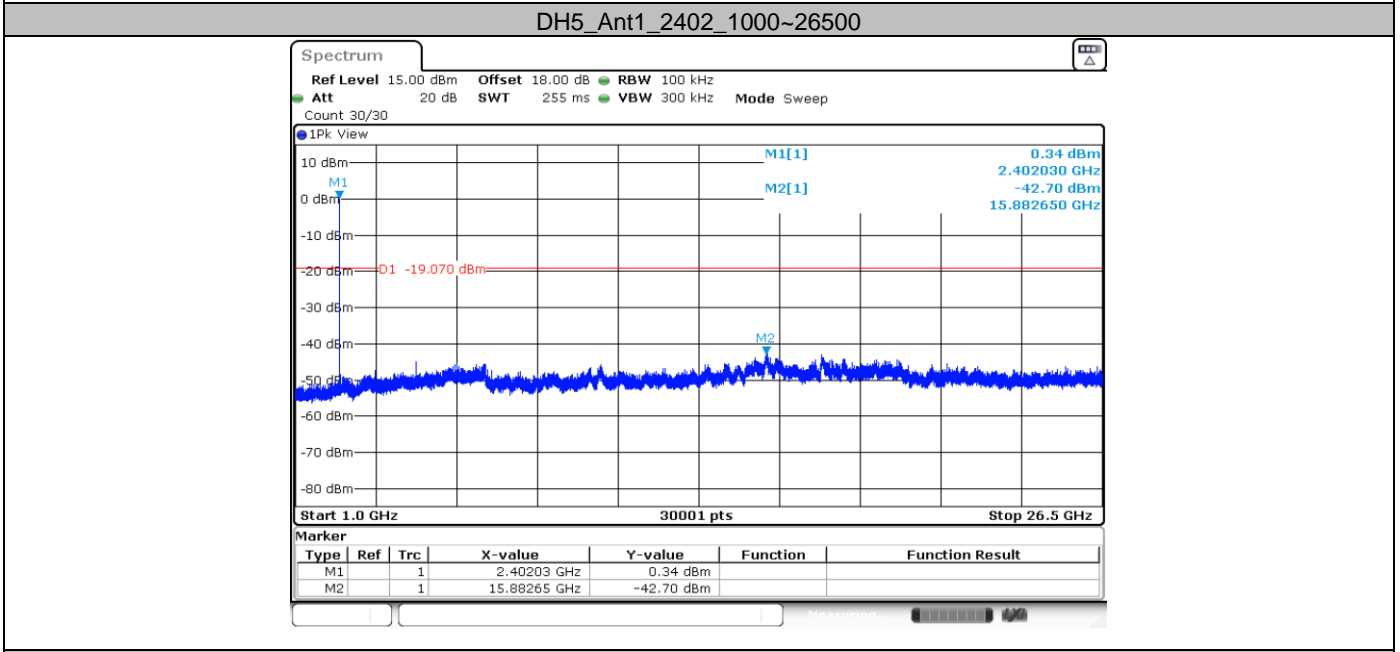
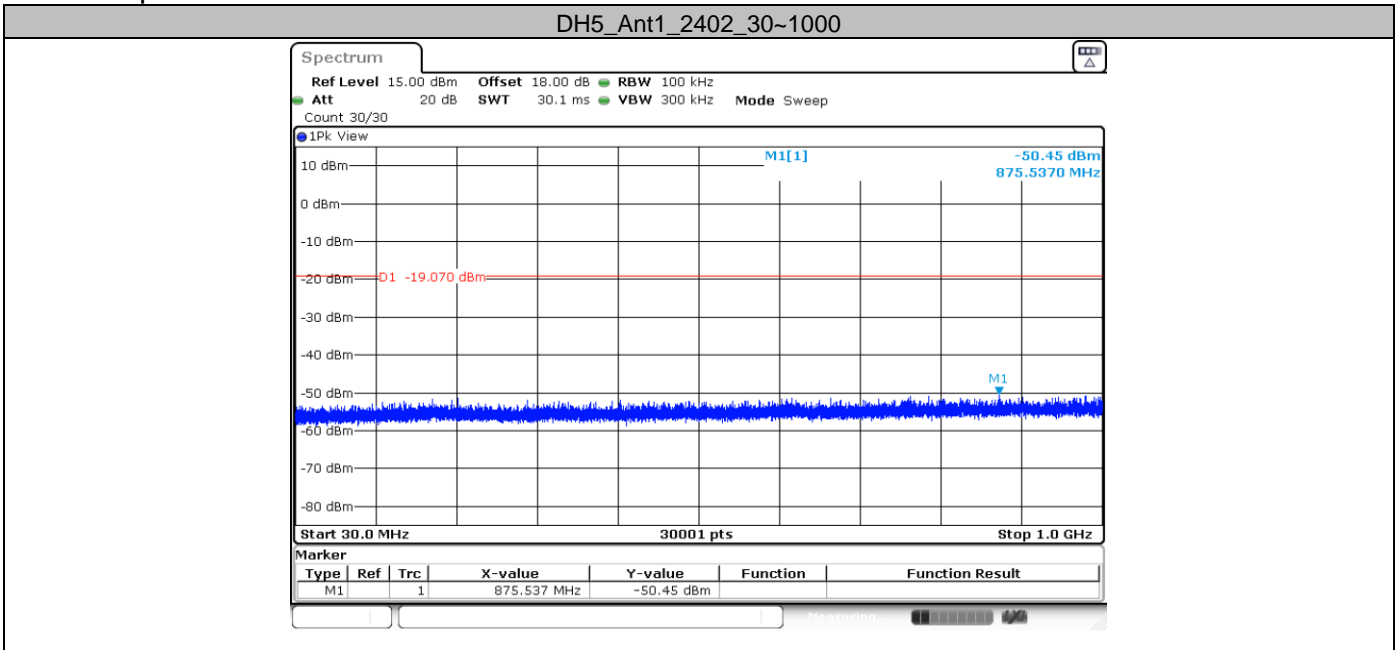
2DH5\_Ant1\_High\_Hop\_2480



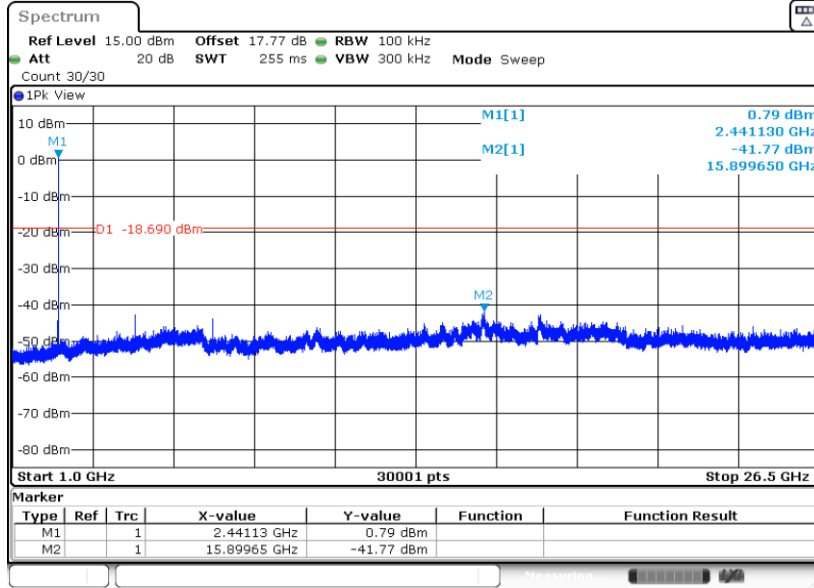
Appendix H: Conducted Spurious Emission  
Test Result

Test Mode	Antenna	Freq(MHz)	Freq Range [MHz]	Ref Level [dBm]	Result [dBm]	Limit [dBm]	Verdict
DH5	Ant1	2402	30~1000	0.93	-50.45	≤-19.07	PASS
			1000~26500	0.93	-42.7	≤-19.07	PASS
		2441	30~1000	1.31	-50.83	≤-18.69	PASS
			1000~26500	1.31	-41.77	≤-18.69	PASS
		2480	30~1000	1.13	-50.87	≤-18.87	PASS
			1000~26500	1.13	-42.47	≤-18.87	PASS
2DH5	Ant1	2402	30~1000	0.69	-50.25	≤-19.31	PASS
			1000~26500	0.69	-42.74	≤-19.31	PASS
		2441	30~1000	1.13	-50.77	≤-18.87	PASS
			1000~26500	1.13	-42.26	≤-18.87	PASS
		2480	30~1000	0.99	-50.47	≤-19.01	PASS
			1000~26500	0.99	-41.48	≤-19.01	PASS

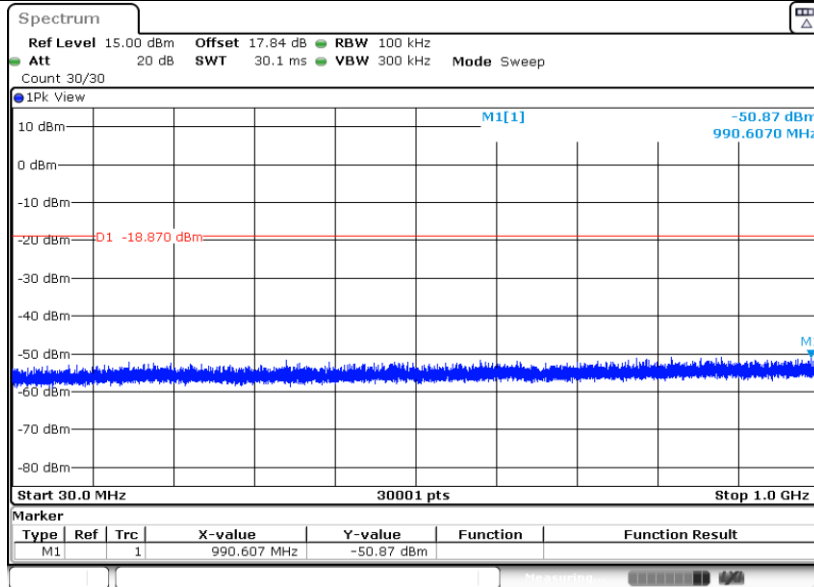
Test Graphs



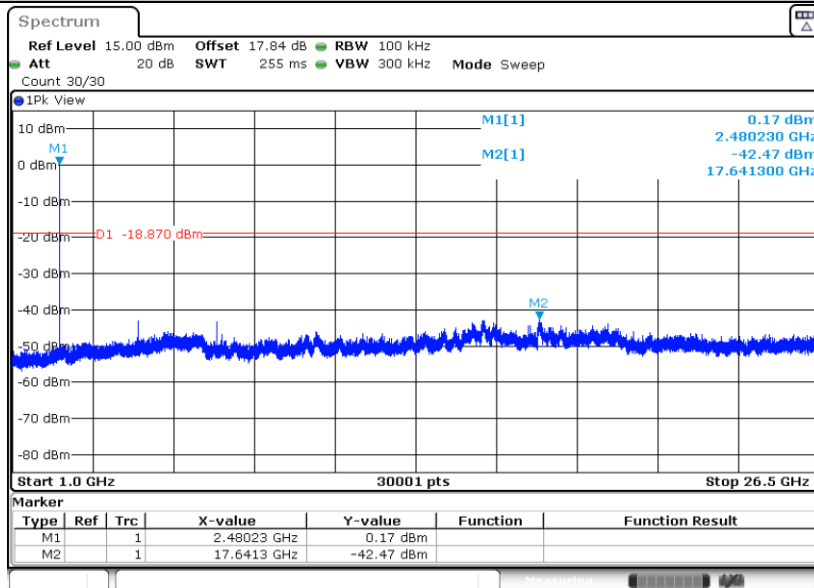
DH5\_Ant1\_2441\_1000~26500



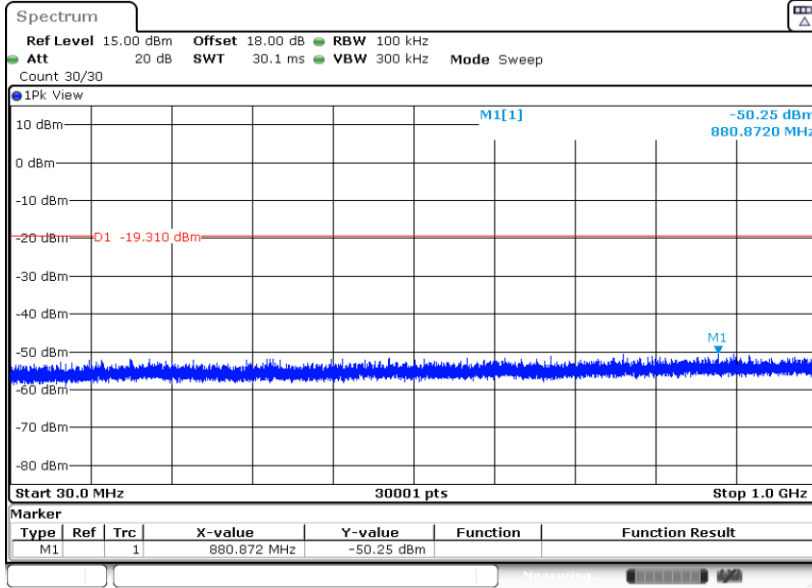
DH5\_Ant1\_2480\_30~1000



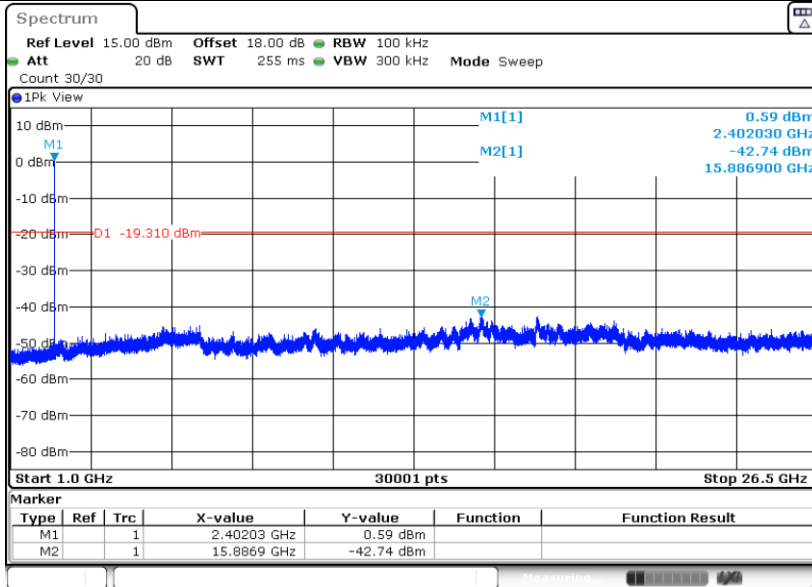
DH5\_Ant1\_2480\_1000~26500



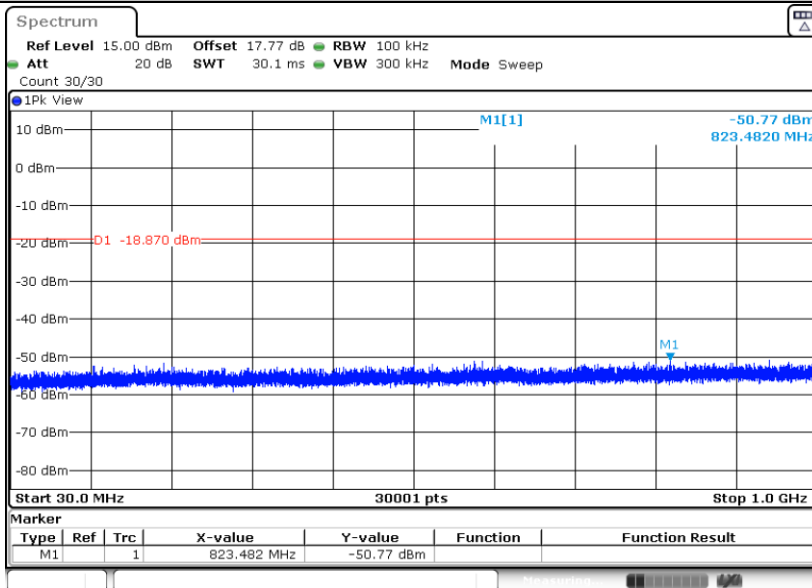
2DH5\_Ant1\_2402\_30~1000



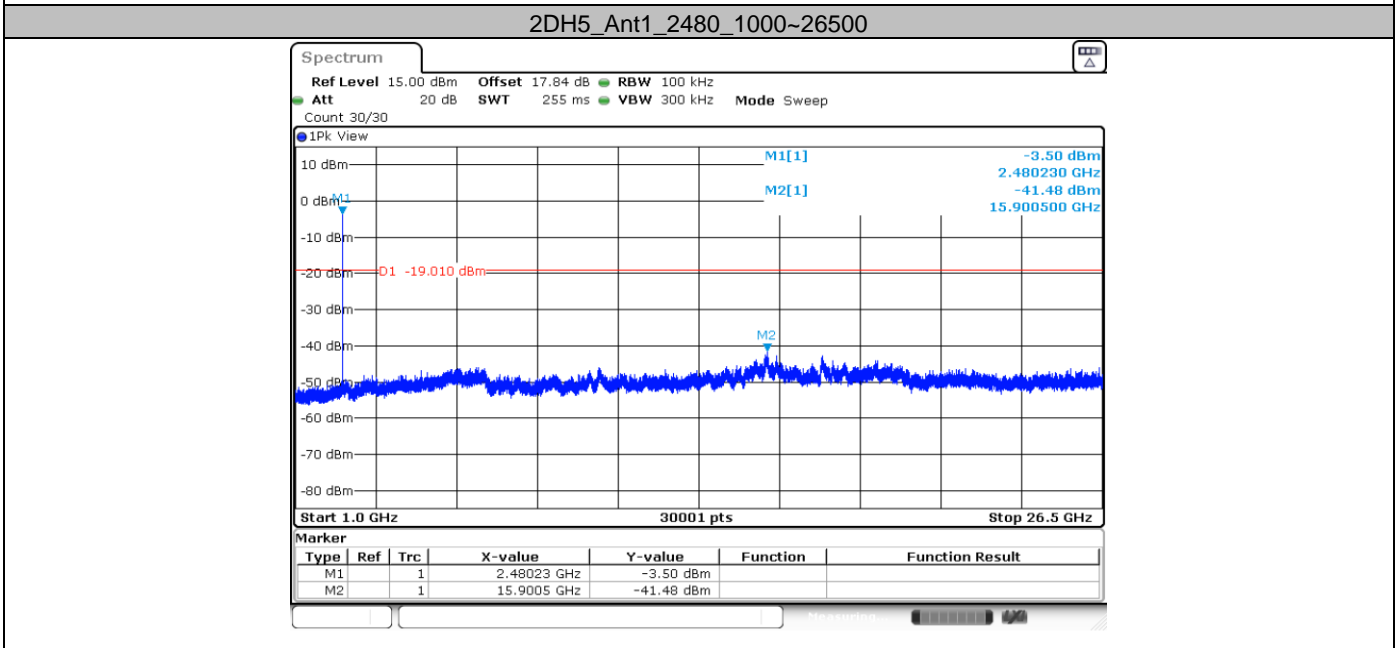
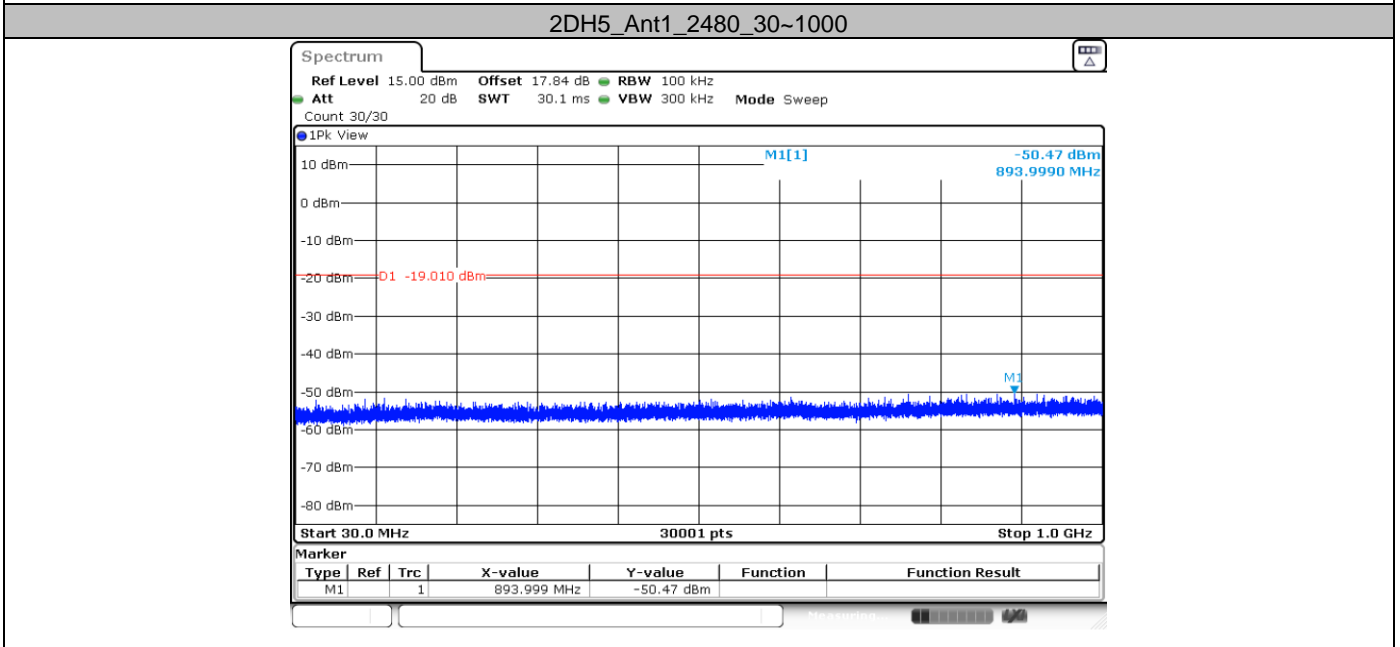
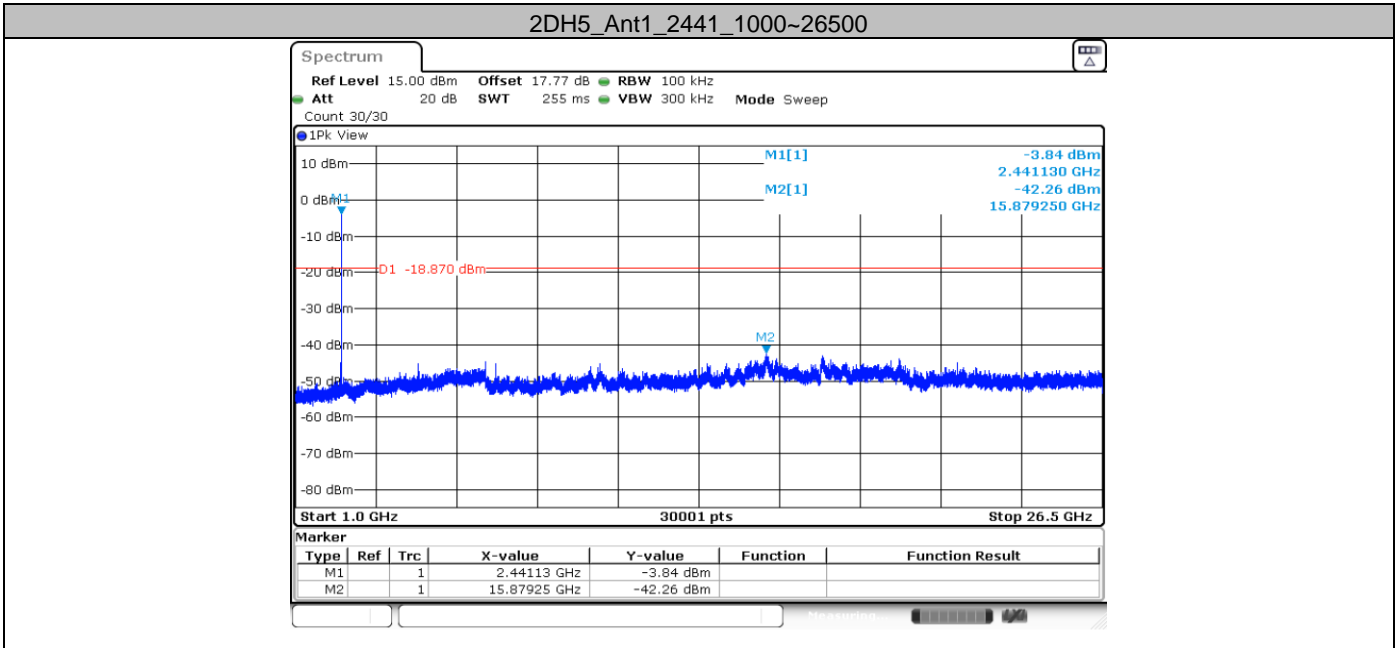
2DH5\_Ant1\_2402\_1000~26500



2DH5\_Ant1\_2441\_30~1000

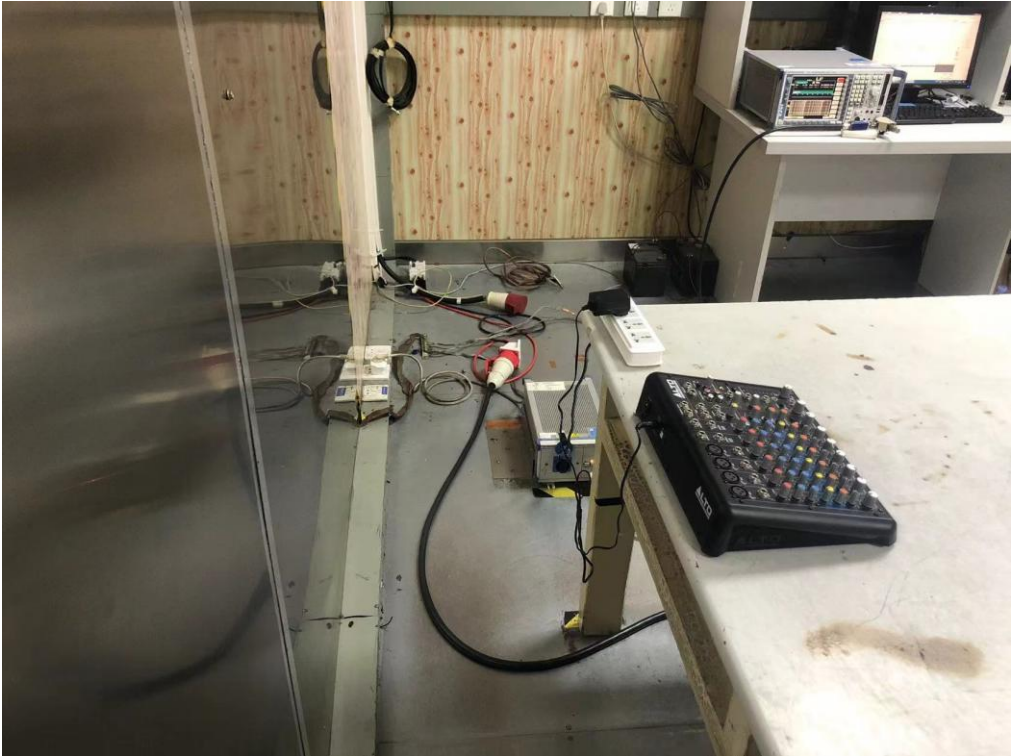




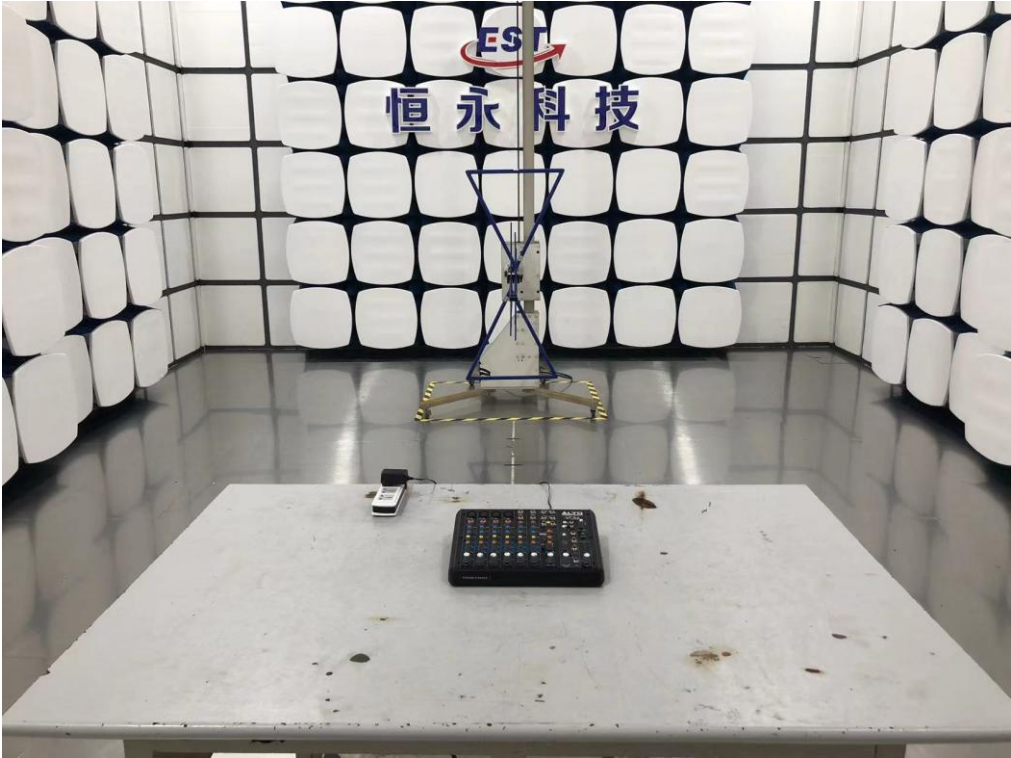


# 14. TEST SETUP PHOTO

Conducted Test



Radiated Test (Below 1GHz)



Radiated Test (Above 1GHz)



# 15. EUT PHOTO

External Photos  
M/N: TRUEMIX 800 FX



**External Photos**  
M/N: TRUEMIX 800 FX



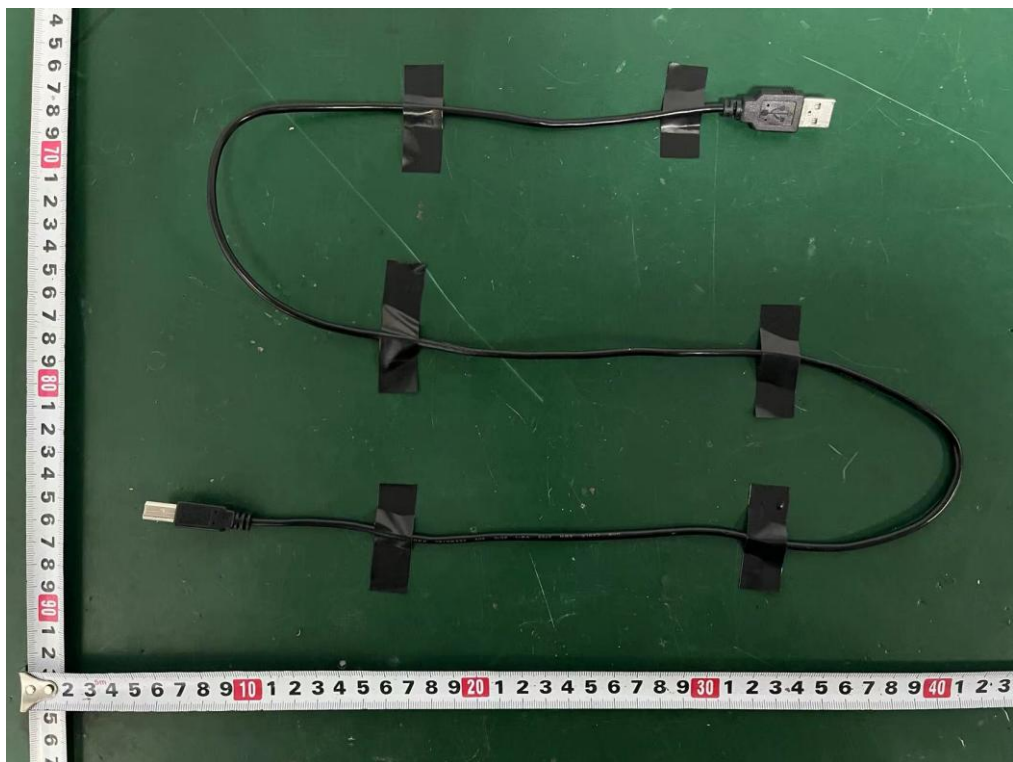
**External Photos**  
M/N: TRUEMIX 800 FX



**External Photos**  
M/N: TRUEMIX 800 FX

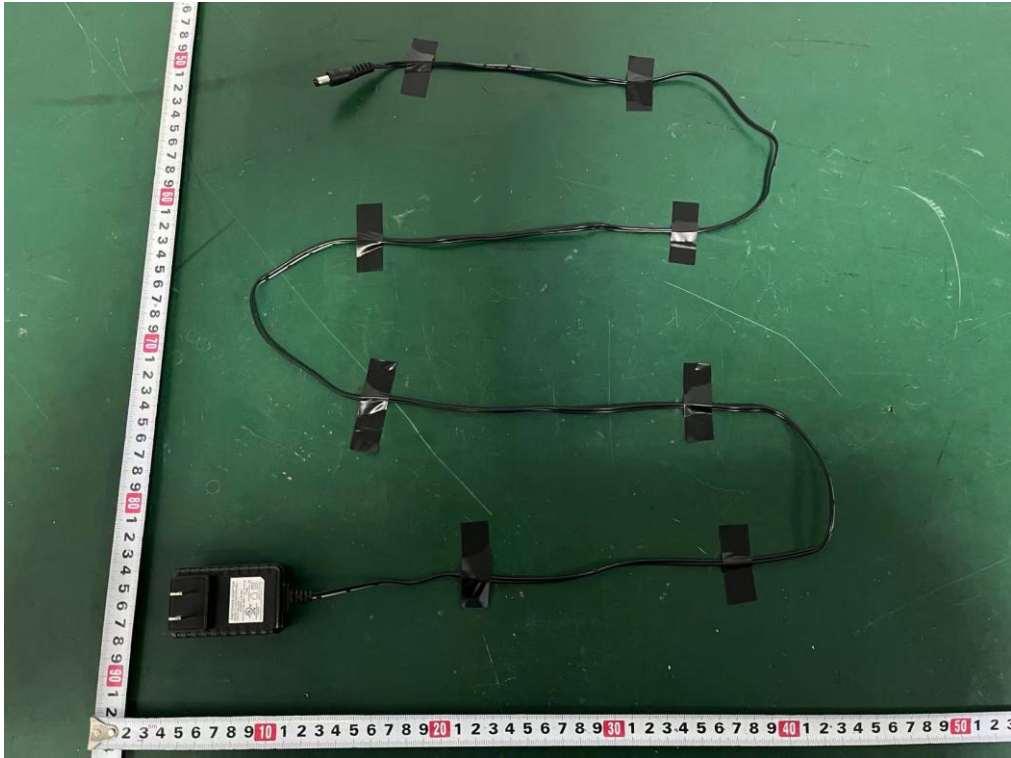


**External Photos**  
M/N: TRUEMIX 800 FX

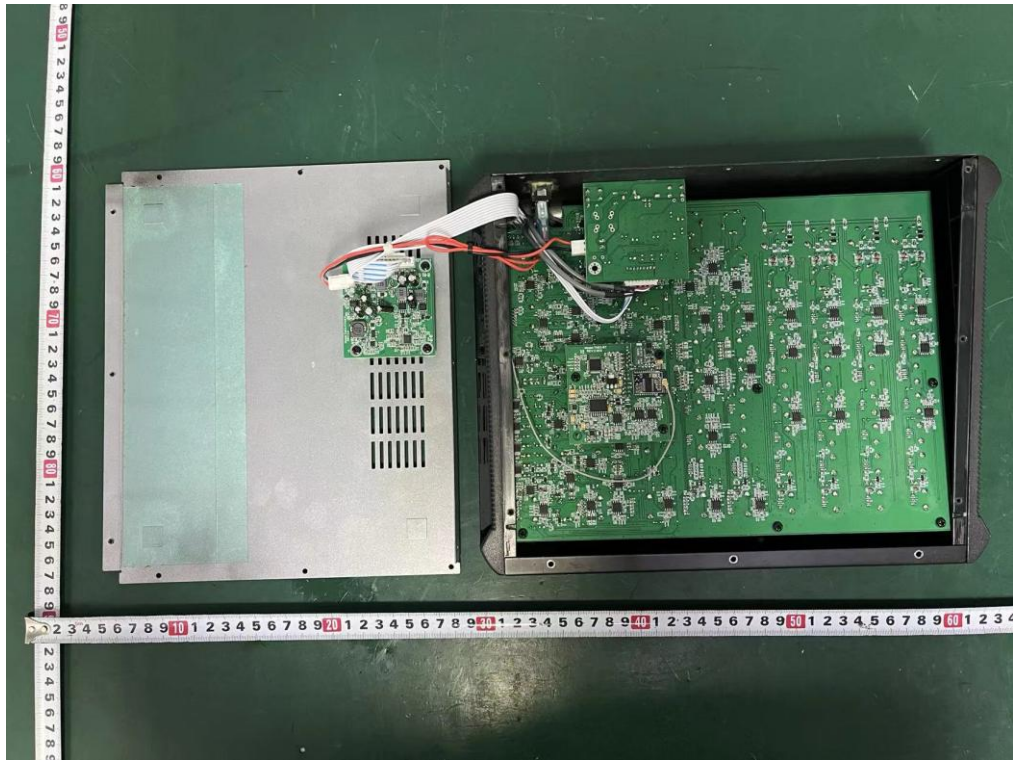




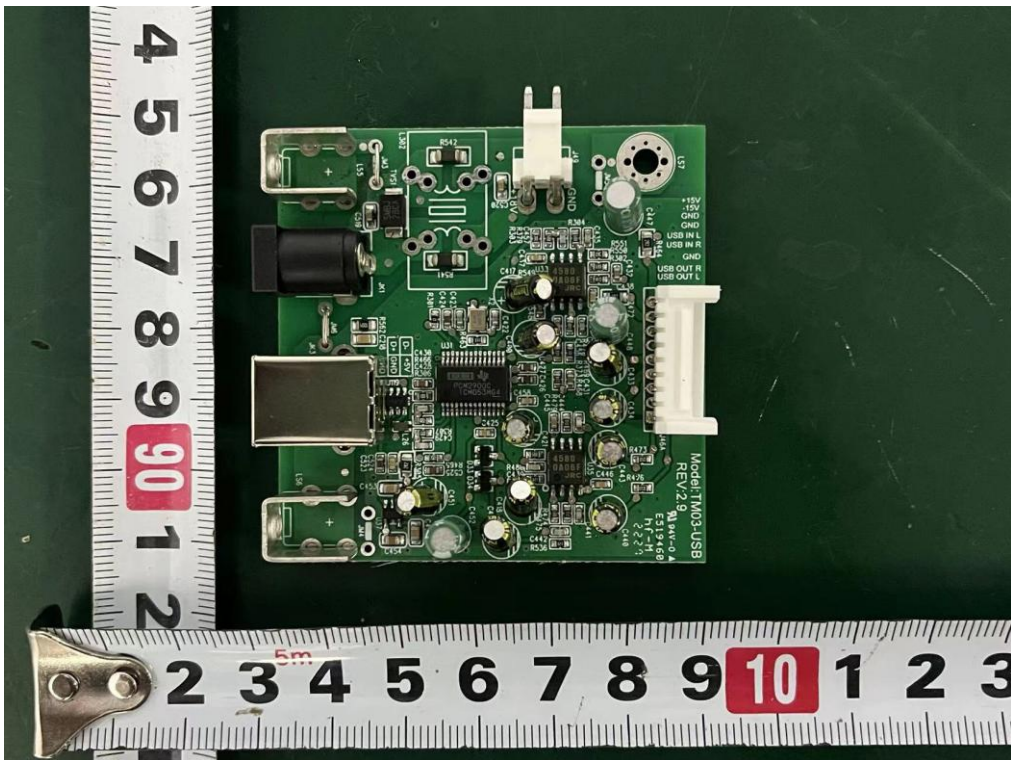
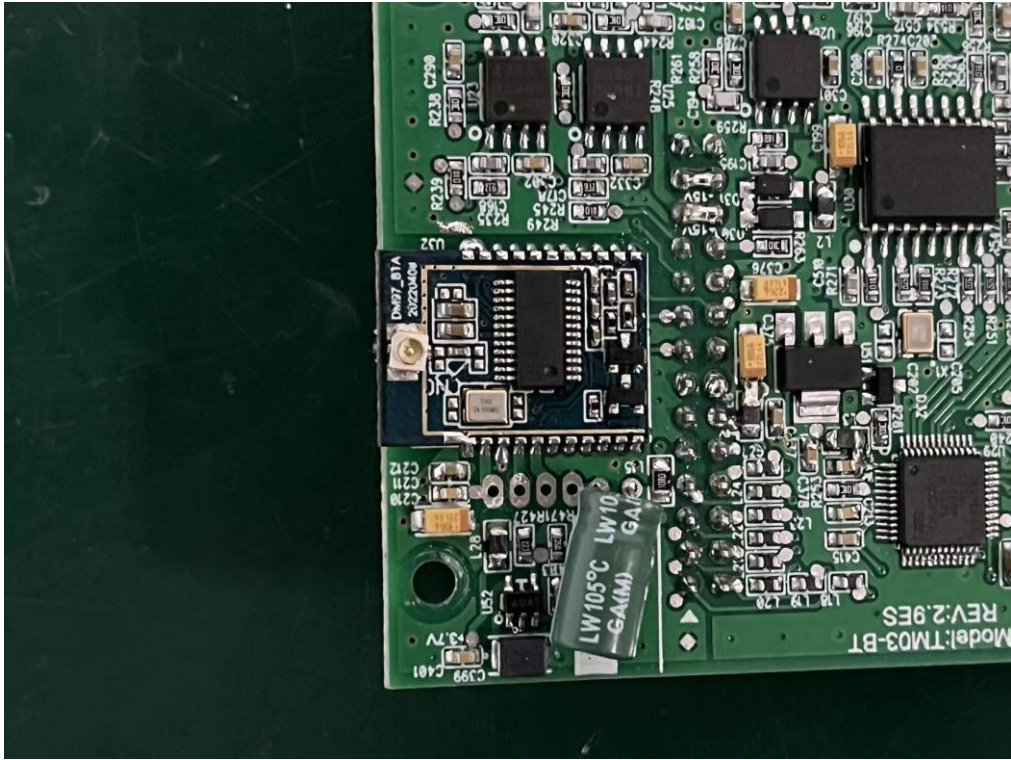
**External Photos**  
M/N: TRUEMIX 800 FX



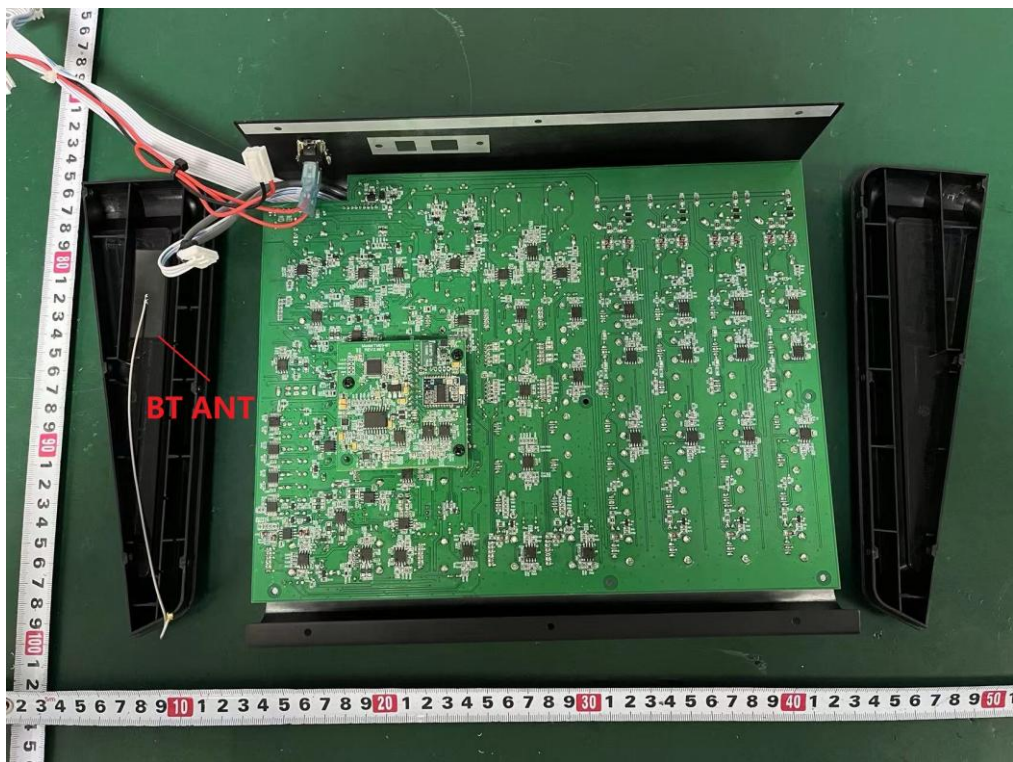
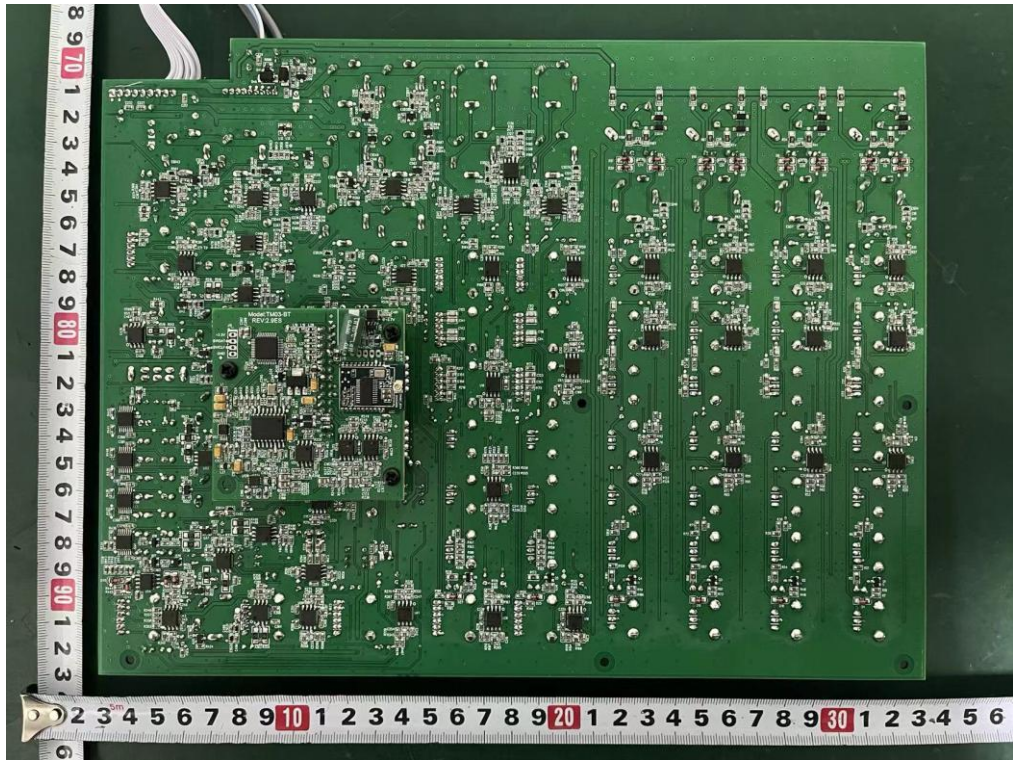
**Internal Photos**  
M/N: TRUEMIX 800 FX



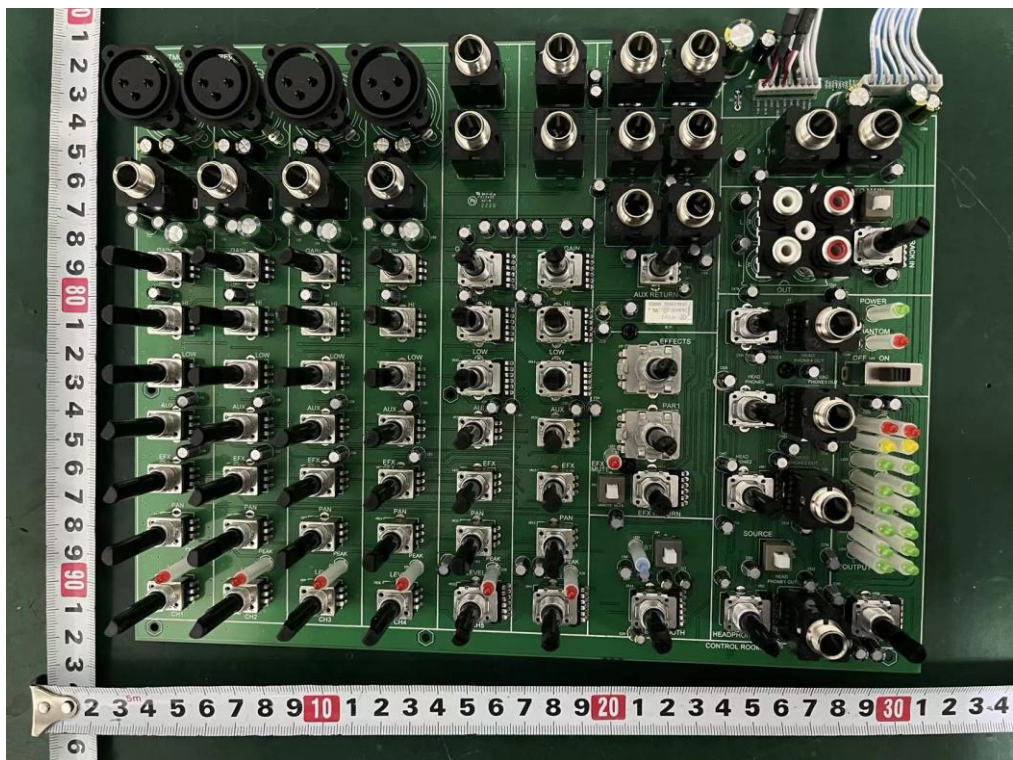
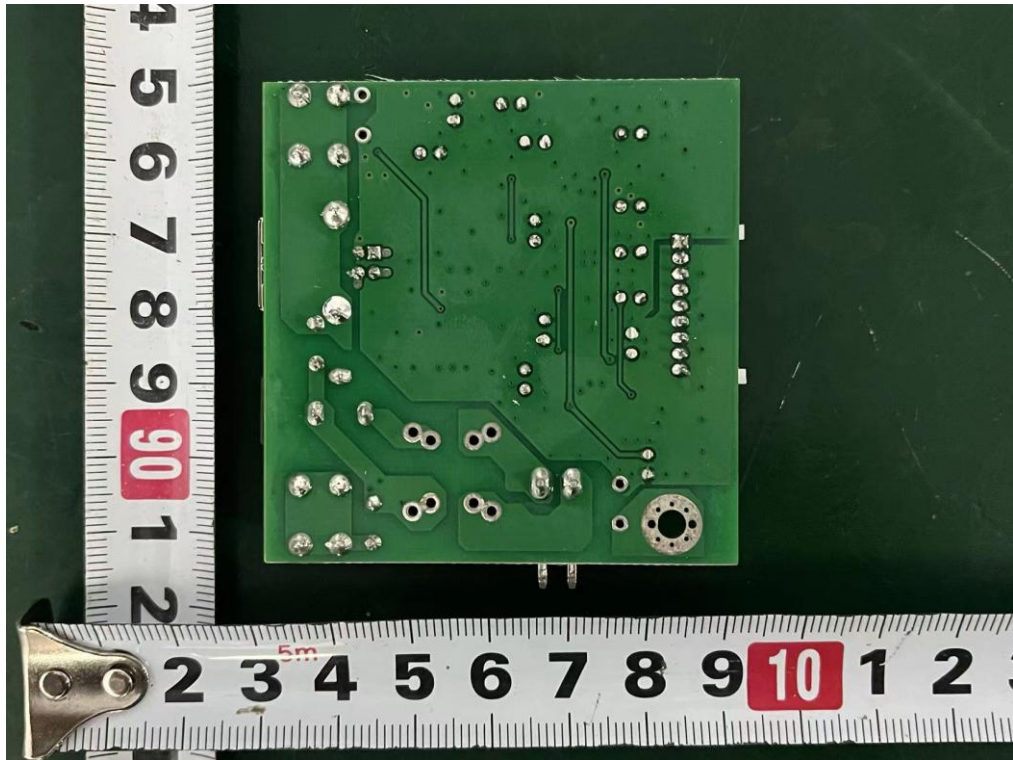
**Internal Photos**  
M/N: TRUEMIX 800 FX



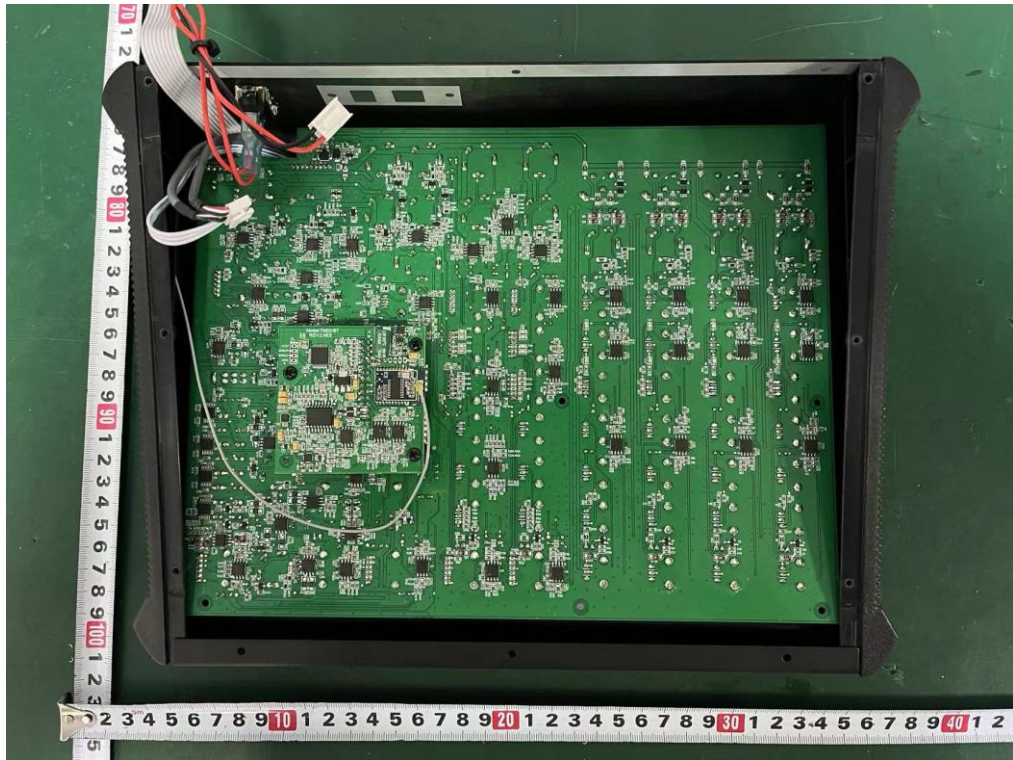
**Internal Photos**  
M/N: TRUEMIX 800 FX



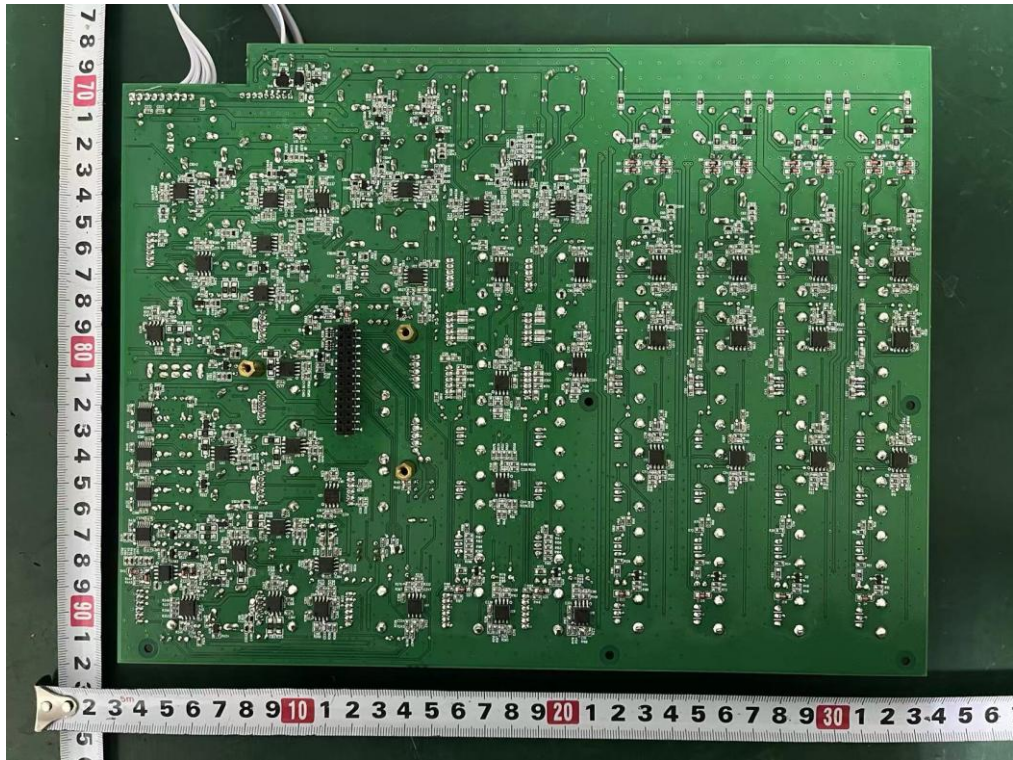
**Internal Photos**  
M/N: TRUEMIX 800 FX



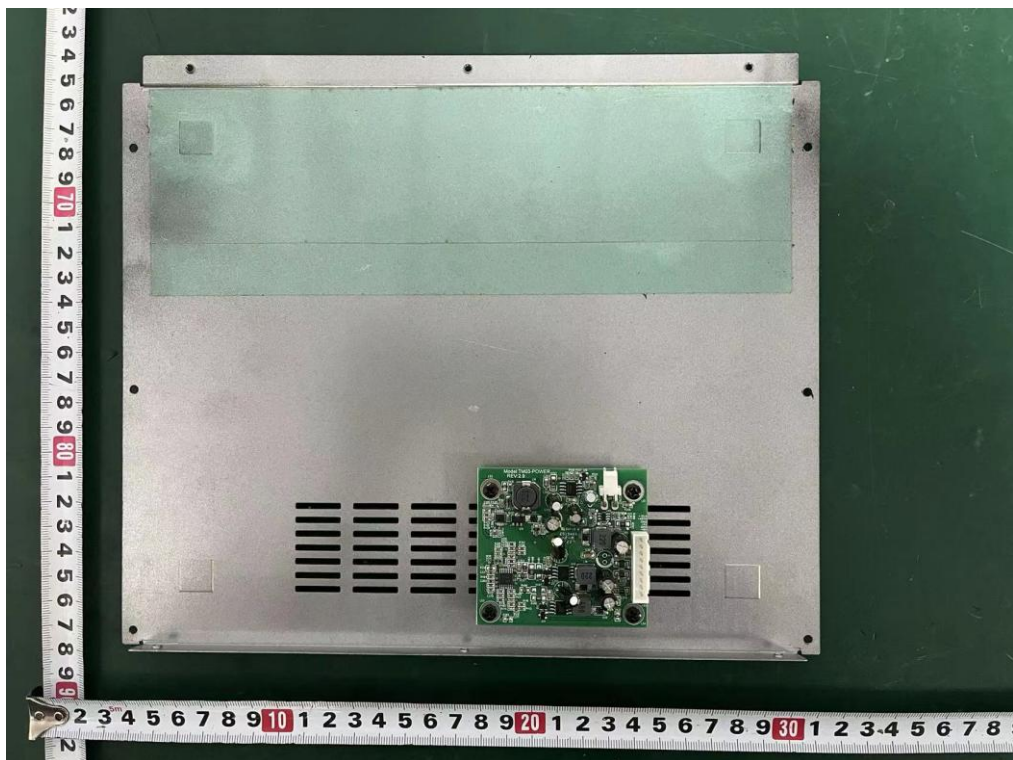
**Internal Photos**  
M/N: TRUEMIX 800 FX



**Internal Photos**  
M/N: TRUEMIX 800 FX

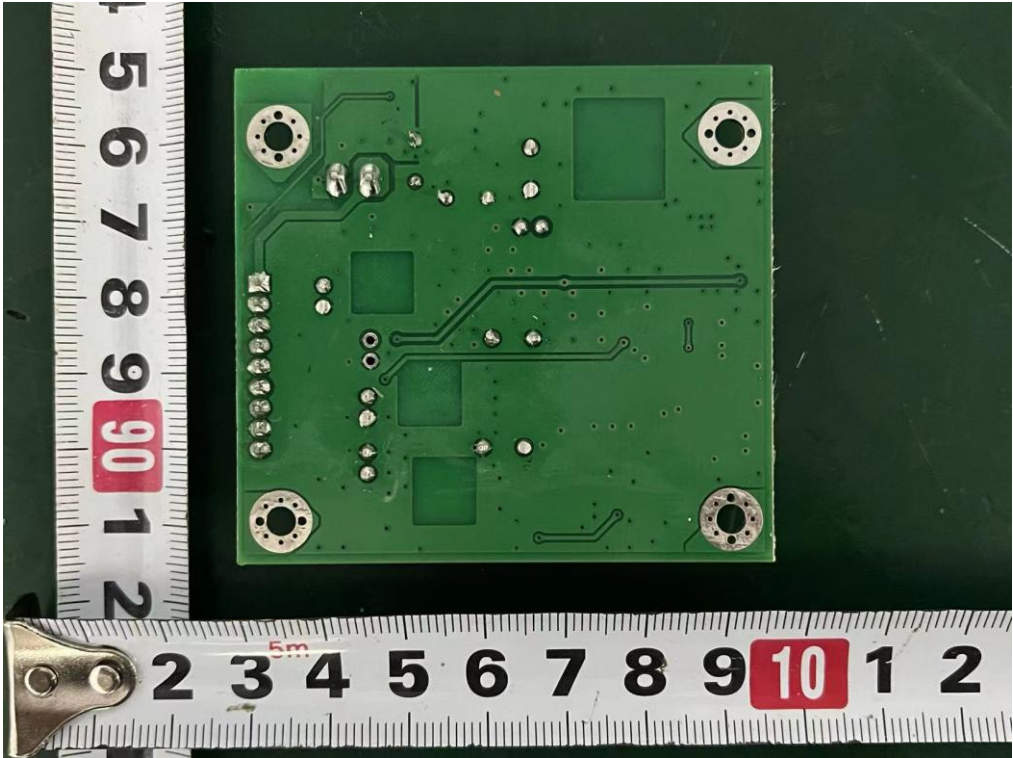


**Internal Photos**  
M/N: TRUEMIX 800 FX





**Internal Photos**  
M/N: TRUEMIX 800 FX



**End of Test Report**