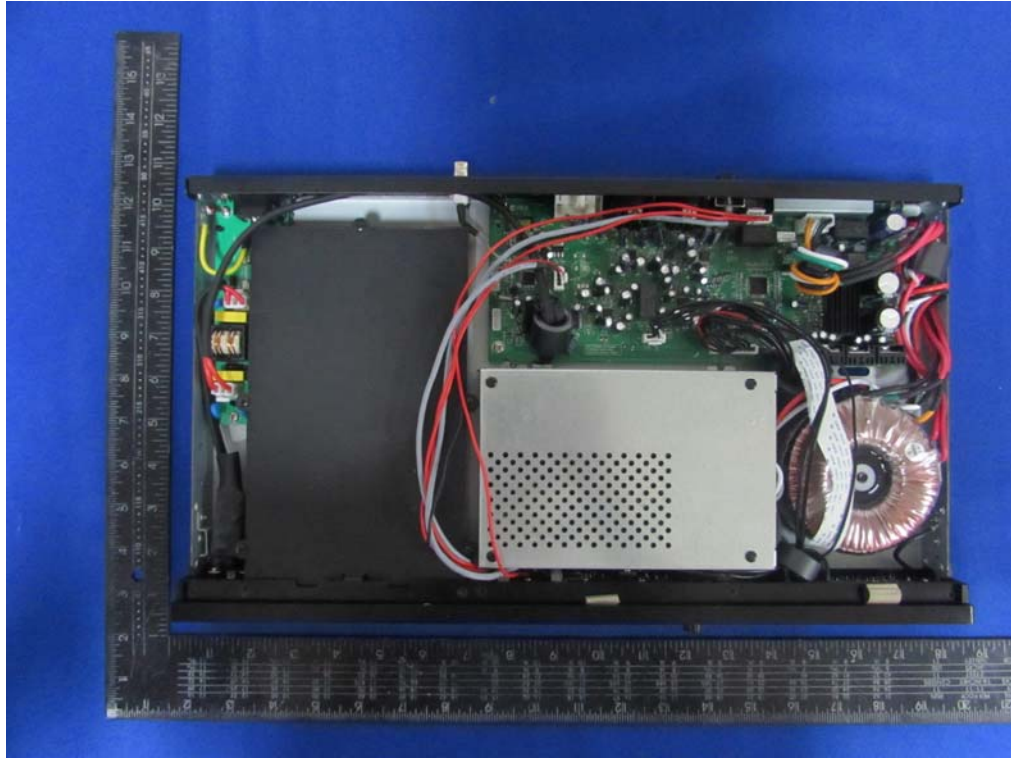
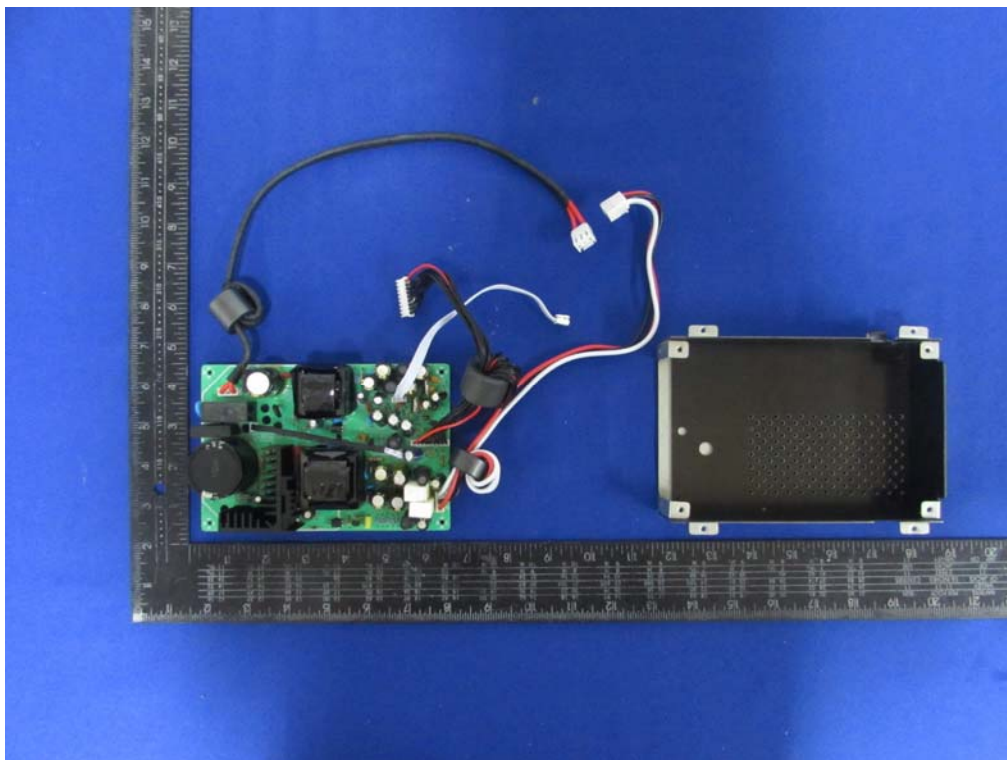
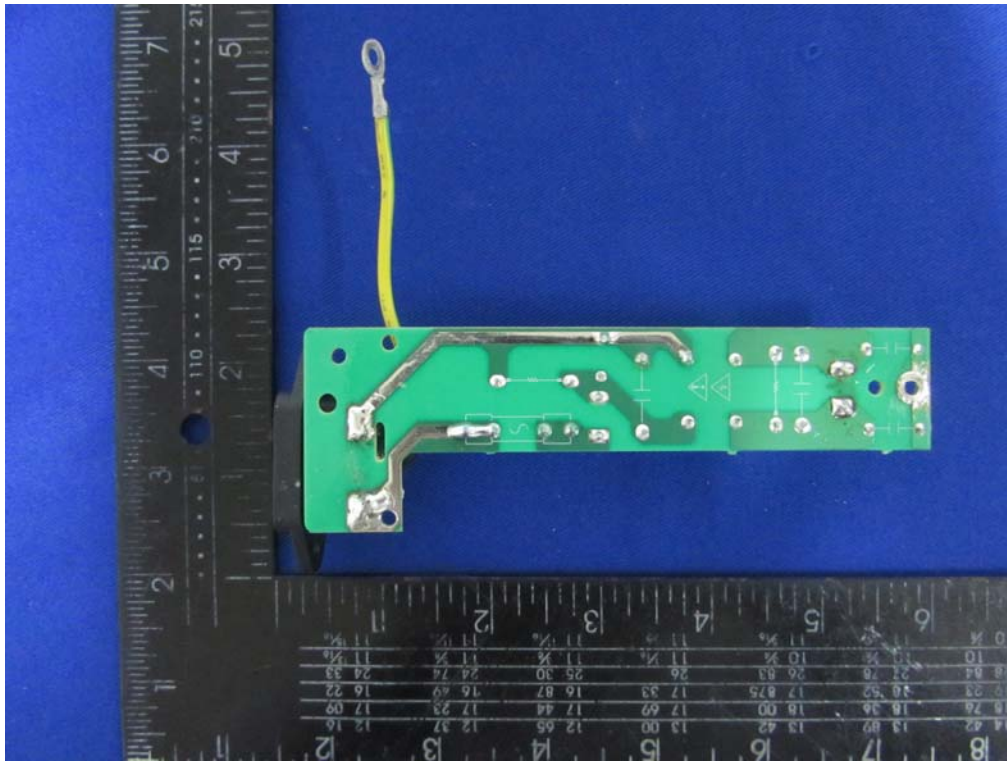


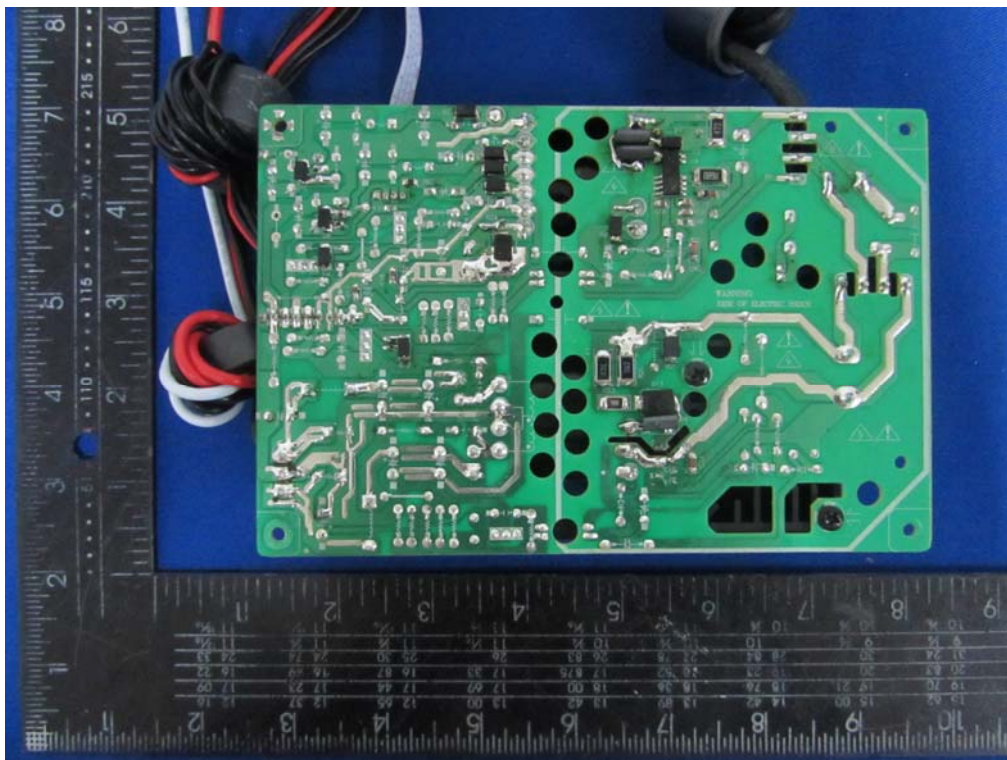
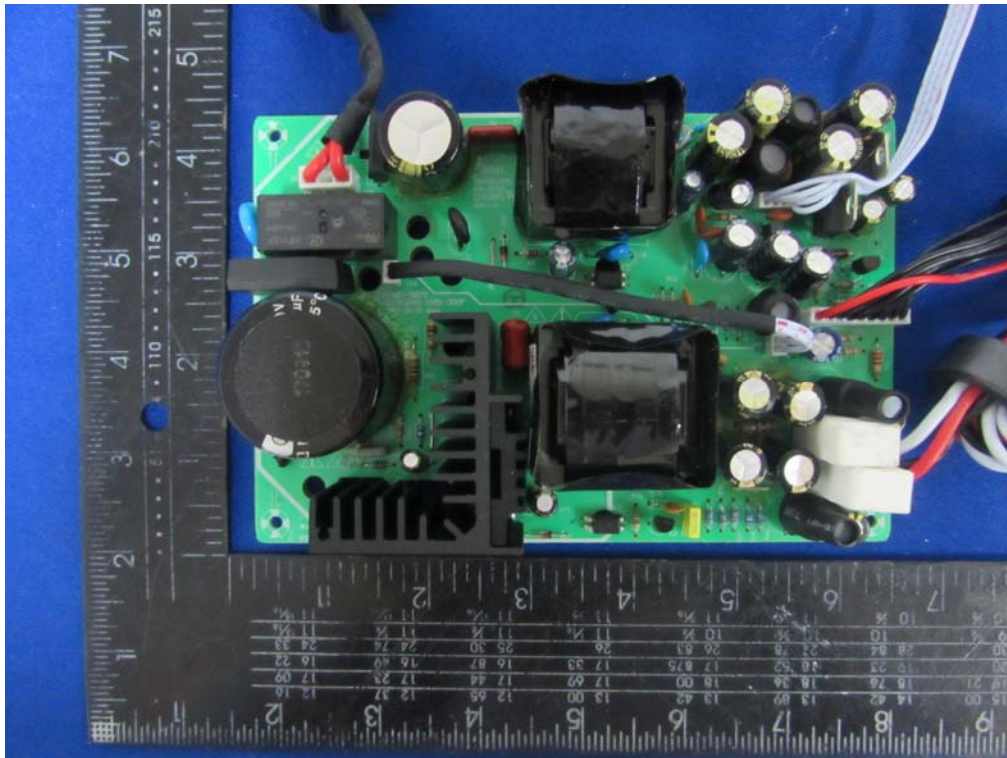
Internal Photos
M/N: DN-350MP



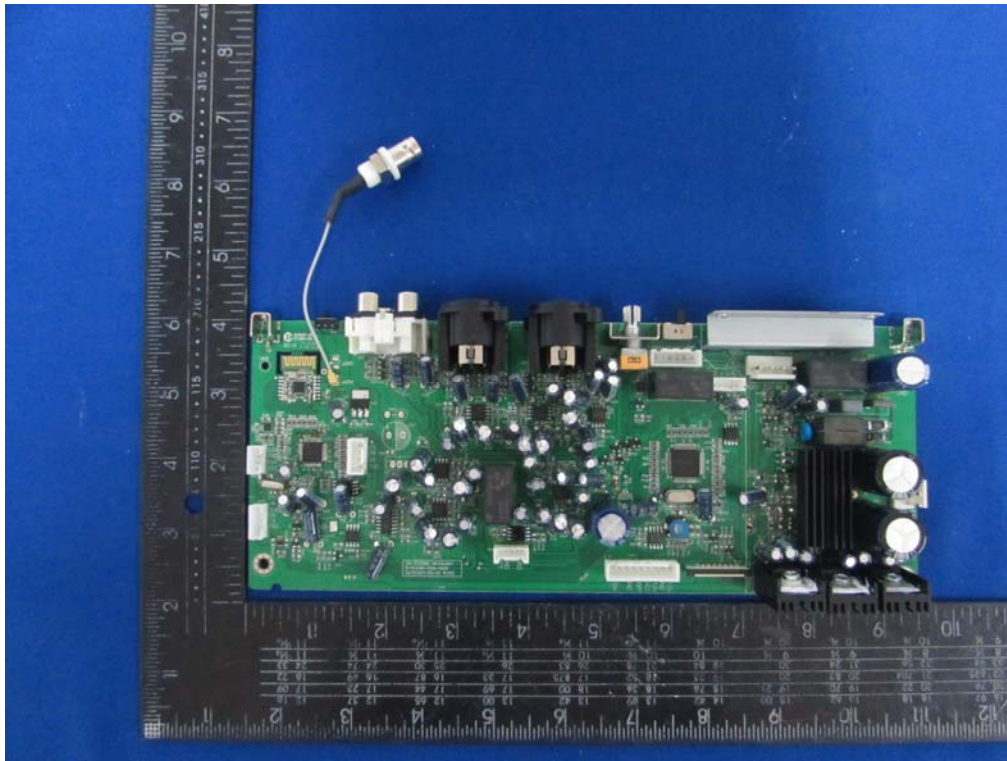
Internal Photos
M/N: DN-350MP



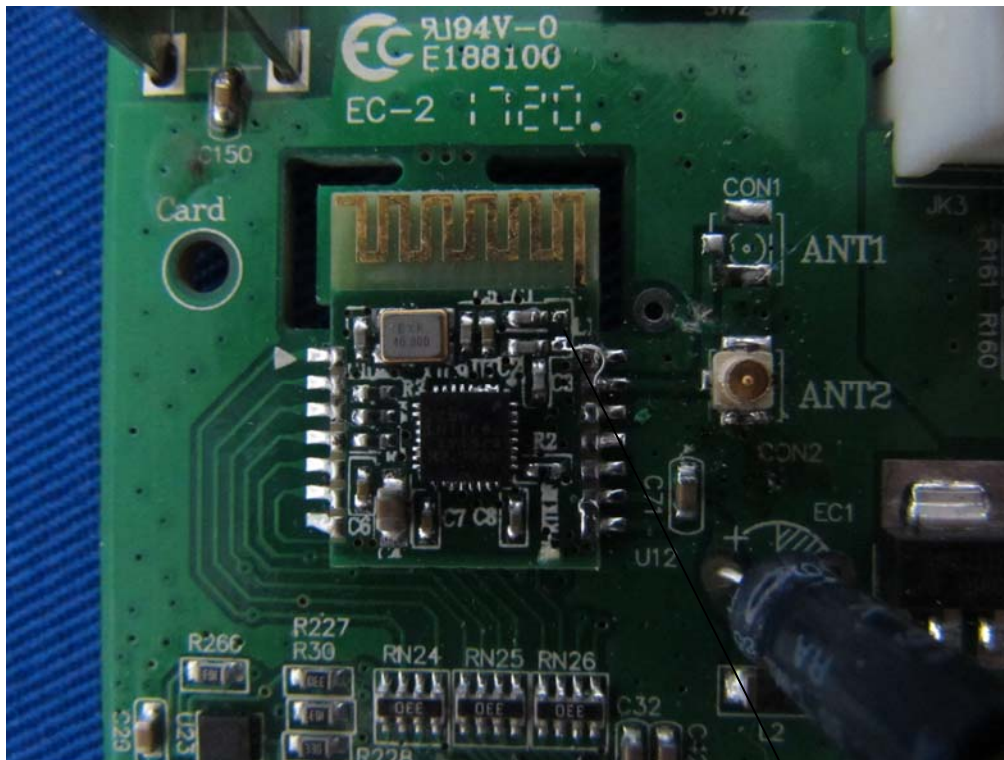
Internal Photos
M/N: DN-350MP



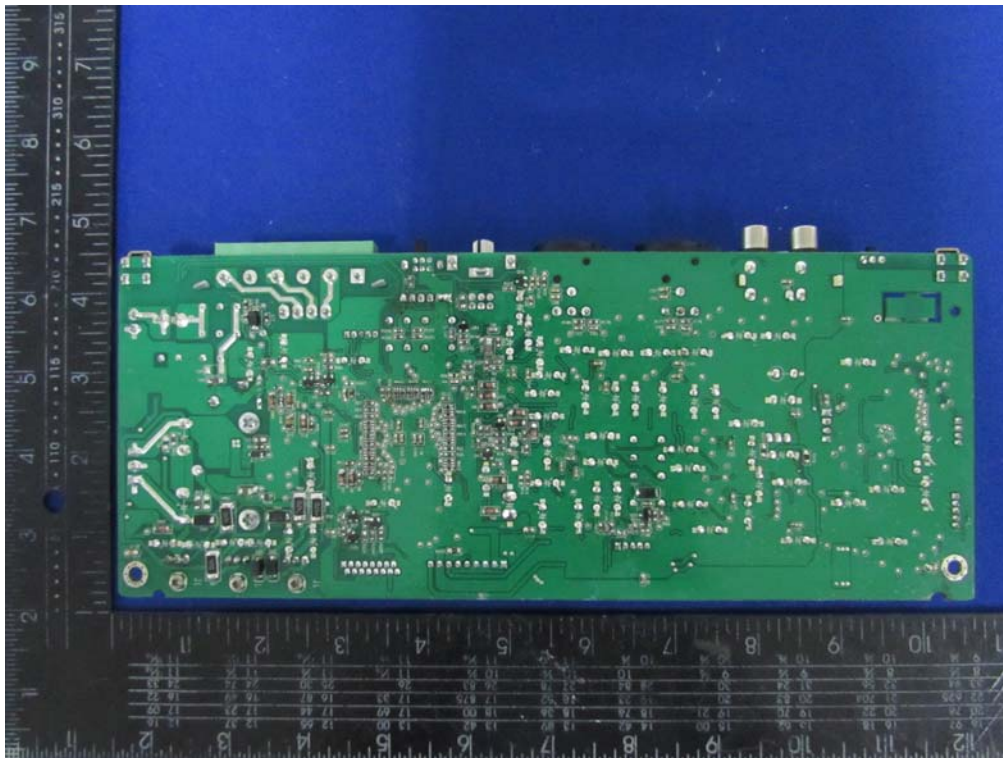
Internal Photos
M/N: DN-350MP



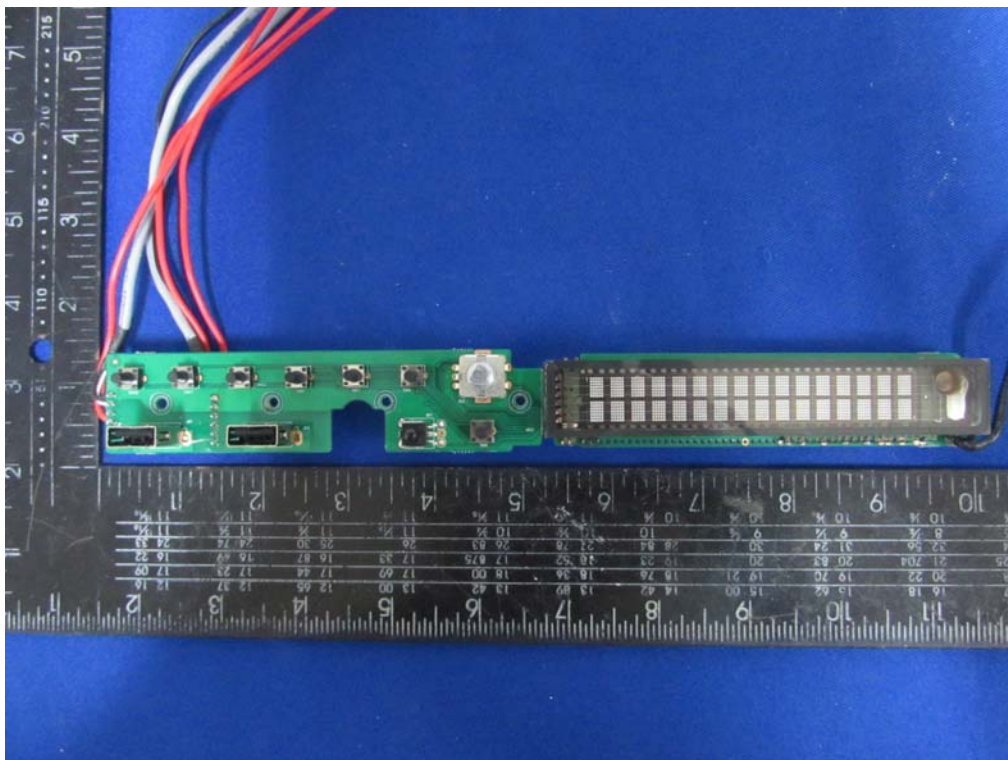
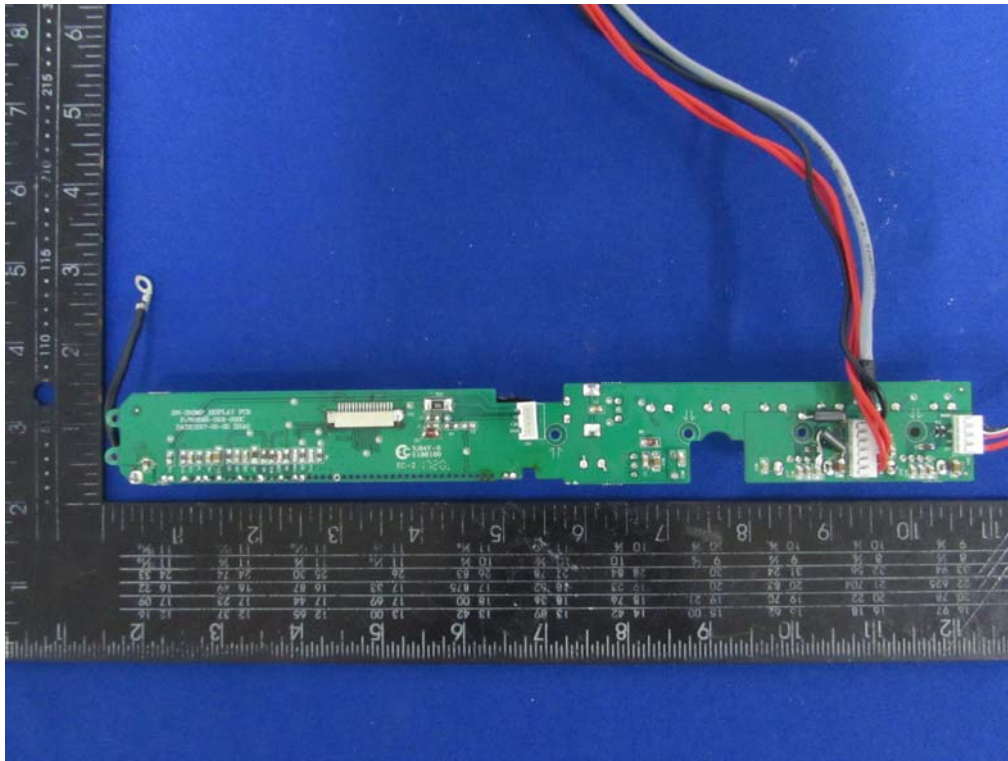
Internal Photos
M/N: DN-350MP



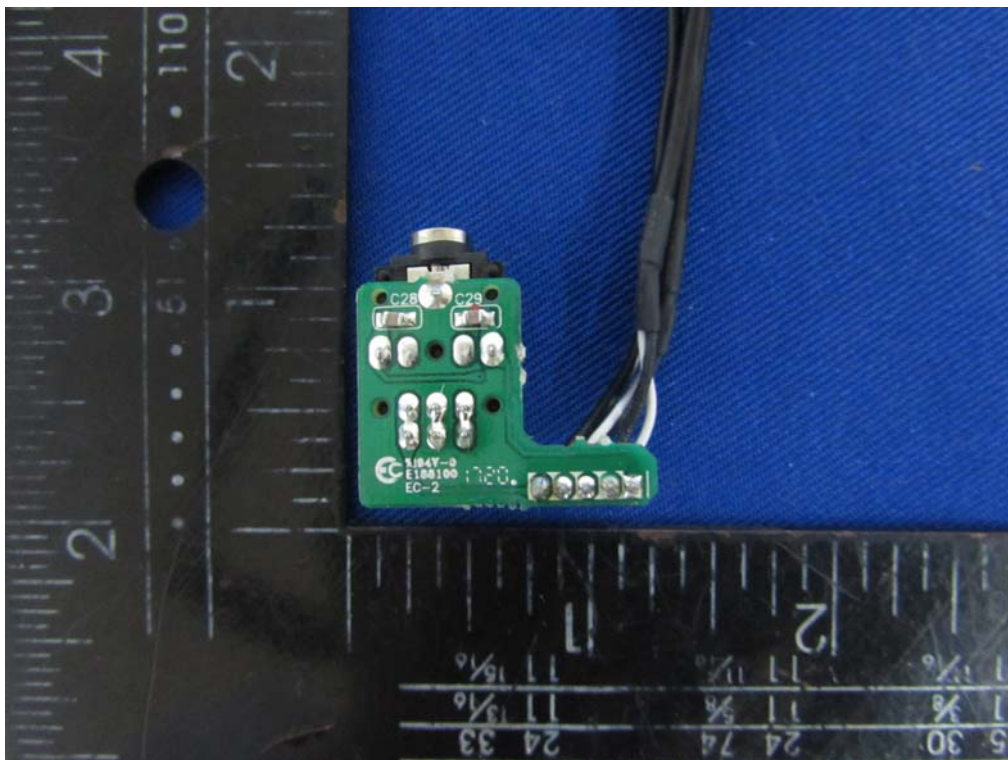
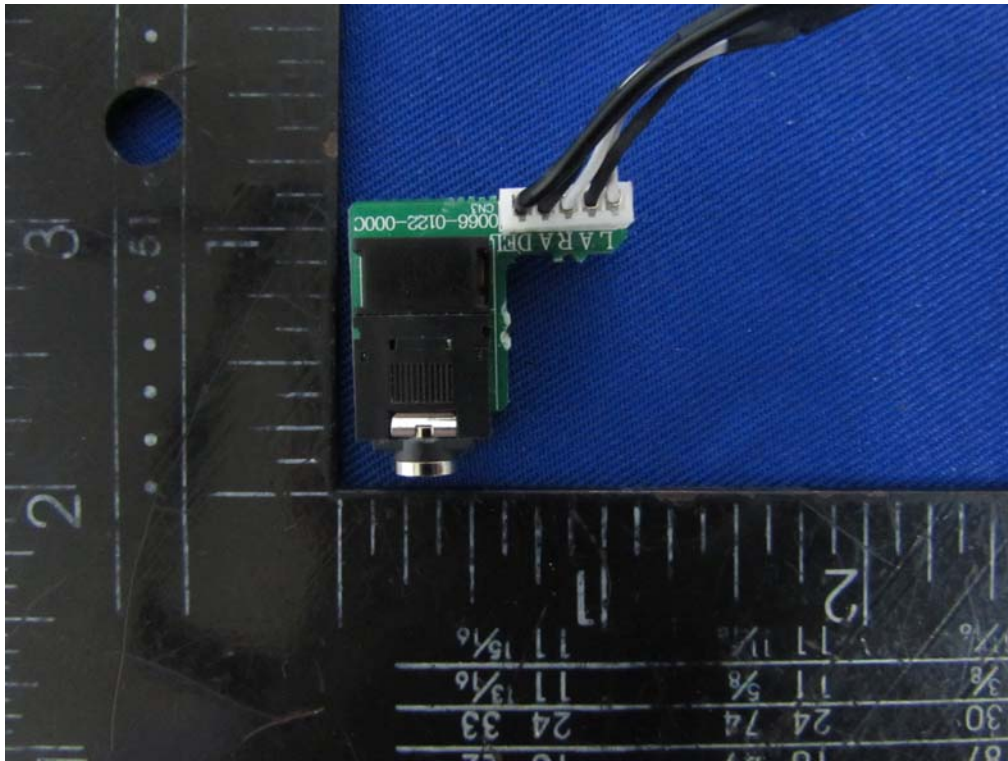
L1 chip inductor has been deleted, so the PCB antenna has not been used.



Internal Photos
M/N: DN-350MP



Internal Photos
M/N: DN-350MP



Internal Photos
M/N: DN-350MP

