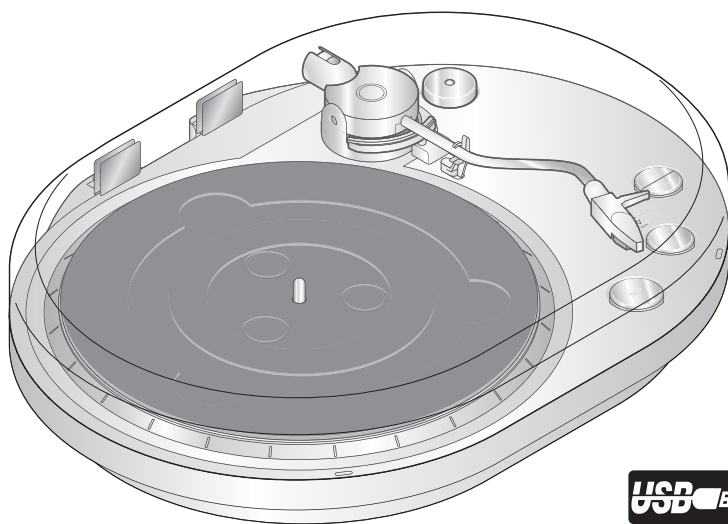


# CROSLEY®

2 SPEED BELT DRIVE USB TURNTABLE

**TURNTABLE**

## L-79



**OPERATING INSTRUCTIONS / MANUEL D'UTILISATION /**

## Safety information

### Mains supply

This equipment is designed to operate from a 230 Volt, 50Hz AC mains supply. Other power sources may damage it.


Check that the rating label on the back of the equipment states 230V AC before you plug it in for the first time.

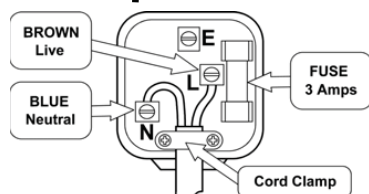
### Mains plug

We have fitted this equipment with a standard mains plug.

- If the mains lead gets damaged it must be replaced by a qualified service agent with an approved lead of the same type and rating to avoid an electrical hazard.
- If you cut off the mains plug, for example to fit a different type, please destroy the old plug, as it would be dangerous if inserted into a live power outlet. Carefully follow the wiring instructions supplied with the new plug.
- If a fuse is fitted to the plug, remove the fuse before throwing the plug away.
- Carefully follow the wiring instructions supplied with a new mains plug.
- Never use a fused mains plug without the fuse cover.

### Mains plug wiring for the

- In a re-wirable plug the wires in the mains lead of this equipment must be connected as follows.
- The wire-coloured brown must be connected to the terminal that is marked with the letter L.
- The wire-coloured blue must be connected to the terminal that is marked with the letter N.
- Do not connect anything to the earth terminal which is marked E, or .



- You must make sure the mains lead is firmly secured under the cord clamp.

### Mains fuse

UK standard (BS1363) plugs must have a 3 amp (BS1362 type) fuse fitted. Replace the plug or have the power lead assembly replaced if the fuse cover is lost.

### Symbols



This equipment is double insulated and an earth connection is not required.



Dangerous voltage constituting a risk of electric shock is present inside this equipment.



This mark is applied to show the equipment conforms to European safety and electromagnetic compatibility standards.



There are important operating and maintenance instructions in the literature accompanying this equipment.

### Safe use and care of your equipment

We have designed and made this product to meet European safety standards, but as with any electrical equipment you must take care to get the longest working life from it and stay safe. Here are a few tips to help you do this.

**Read** these instructions carefully before you try to use the equipment.

**Protect the mains lead.** You must ensure the mains lead cannot be walked on, crushed, chafed or cut.

**Avoid harsh conditions** such as wet or damp places, high humidity, strong vibration, extremely high or low temperatures, strong sunlight and places which are very dusty.

**Never** push objects into holes and ventilation slots.

**To save power**, switch off mains power or pull out the mains power plug when you are not using the equipment, unless the function of the equipment requires a continuous power supply.

**Don't** continue to use this equipment if you have spilt liquids in it, if it is damaged in any way or if it does not work normally. Immediately unplug the equipment and get expert advice.

**Pull** the mains plug out of the wall socket during thunderstorms.

**This product is designed for domestic use only. Any other use may invalidate the guarantee and might be dangerous.**

#### **Ventilation**

Place the equipment on a hard flat surface away from direct sunlight and heat sources. If it is in a cabinet, allow at least a 10cm gap all around. Don't obstruct the ventilation slots, including those underneath, with soft furnishings. Overheating will shorten the life of the equipment and increase the risk of fire.

#### **Cleaning**

Disconnect the mains supply and use only a lightly dampened soft cloth. Do not use chemical solvents or strong detergents as these may damage the cosmetic finish.

#### **Disposal**

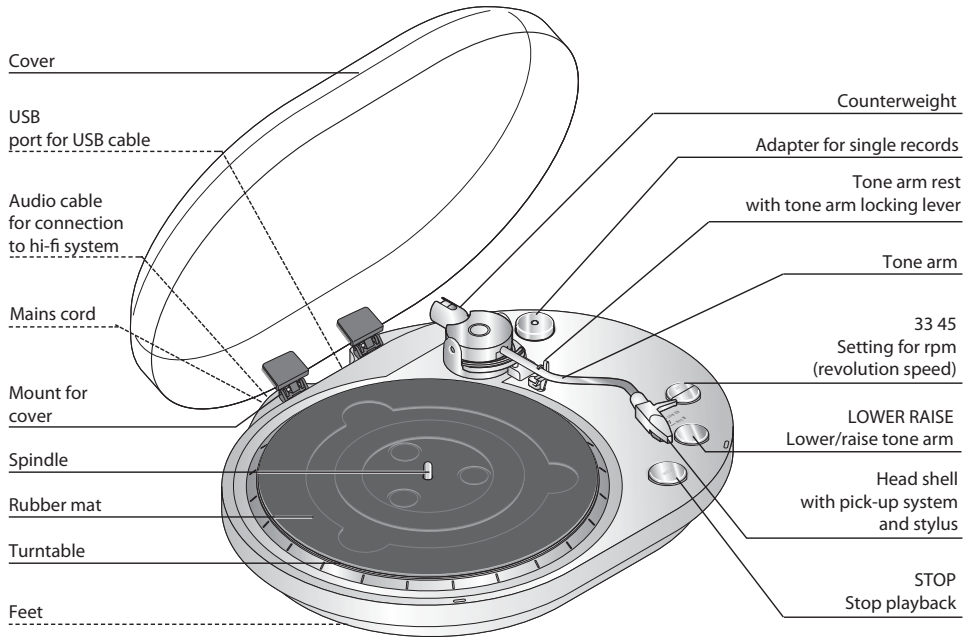


Waste electrical and electronic products must not be disposed of with household waste. Please refer to the retailer from whom you purchased this item for disposal instructions.

#### **Important Safety warnings**

- **To prevent electric shock, do not remove any cover.**
- **If anything goes wrong, don't try and fix it yourself, get a qualified service agent to look at the product.**
- **Do not expose this equipment to dripping or splashing or place any objects filled with liquids, such as vases, on the equipment.**
- **Never put a naked flame source on or near this equipment.**
- **Small parts. Do not let young children play with the equipment.**

## At a glance (features)



### Accessories (not illustrated):

USB cable  
CD with software  
Instructions for use

## First-time use

### Unpacking



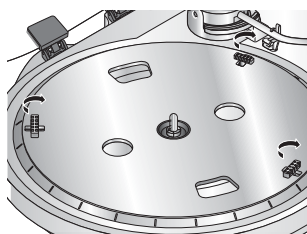
**DANGER** to children - danger to life due to suffocation/swallowing

- Keep the packing material out of the reach of children. Dispose of it immediately.

- Remove the record player and rubber mat from the packaging and remove all packing material.

### Setting up and preparing the device

- Place the device on an even and stable surface.



- Turn the white transport braces on the turntable until you can remove them. Store them carefully.
- Place the rubber mat on the turntable so that the spindle on the turntable pokes through the opening in the mat.

- Remove the protective cap from the pick-up system by pulling it downwards. If the turntable does not turn, check that the belt is correctly fitted around the turntable rim (Underneath the turntable) and motor spindle. To do this remove the rubber turntable mat and look through the holes on top of the turntable and refit the belt if required.

### Connecting the device

#### Audio connection

The record player has an inbuilt preamplifier and can therefore be connected directly to the Line In / Aux input on a hi-fi system.

#### **CAUTION** - material damage

- Do not connect the device to the PHONO input of your hi-fi system. Your receiver/amplifier could be damaged.

- Connect the audio cable to the Line In / Aux input on your hi-fi system (red plug = right channel; white plug = left channel).

#### USB port

You will find information on connecting the record player to a PC in the section "Converting records to digital files".

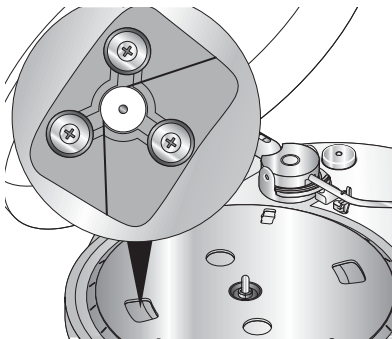
#### Mains connection

- Connect the device by means of the mains plug to an easily accessible wall socket.

## Repositioning the driving belt

Severe jolts (during transport, for example) may cause the record player's driving belt to slip off. To put it back into position, do as follows:

1. Remove the mains plug from the wall socket.



2. Take the rubber mat off the turntable.
3. Turn the turntable to the position illustrated.
4. Pull the driving belt out slightly and place it on the drive wheel as shown in the illustration.

---

## Playing records

To achieve the best quality when playing or converting your records to digital files you should observe the following information:

- Check the stylus regularly. You can brush off fluff and small bits of dirt with a soft brush, brushing from the back to the front. For more stubborn dirt, add a little cleaning spirit to the brush.

For information on how to change the stylus refer to "Changing the stylus".

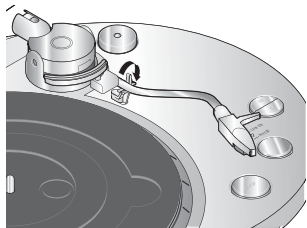
- Secure the tone arm and turntable when transporting the device.
- The adapter must always be used when playing singles.
- Check the connection to your hi-fi system before playing a record.
- Clean your records with an antistatic cloth before playing them.



1. Lift the cover until it clicks into place.

2. Place the record on the turntable.

3. Set the required rpm by pressing the **33** or **45** button.



4. Remove the protective cap from the pick-up system, if necessary, by pulling it downwards.

5. Push the tone arm locking lever to the right.

6. Press the **LOWER RAISE** button to raise the tone arm.

7. Guide the tone arm across the record to the track you wish to play. The turntable starts to turn.

8. Press the **LOWER RAISE** button to lower the tone arm. Playback begins. After the last track on the record, the tone arm returns automatically to the tone arm rest. The turntable stops.

9. Push the tone arm locking lever to the left.

10. Close the cover.

#### Pausing playback

- Press the **LOWER RAISE** button to raise the tone arm and pause playback.
- Press the **LOWER RAISE** button again to lower the tone arm and continue playing the record.

#### Stopping playback

- Press the **STOP** button to end playback. The tone arm automatically returns to the tone arm rest. The turntable stops.

## Converting records to digital files



- Your record player can work together with all audio recording programmes that support USB audio devices. The “Audacity” programme is included with the record player. This programme is free of charge and distributed under the GNU General Public License (GPL).
- Information about enclosed software (Version 1.2.6) may be found in the (English) programme help function and in the manual on the enclosed CD.
- Further information concerning software, new versions, manuals and a forum for users' questions is available on the Internet at <http://audacity.sourceforge.net>.
- **As "Audacity" is continuously updated, versions available on the Internet may differ not only in appearance, but also in the menu structure and in individual functions.**

### System requirements

- Windows XP or Vista
- Pentium 300 MHz or higher (XP) or 1 GHz or higher (Vista)
- At least 128 MB RAM (XP) or at least 512 MB RAM (Vista)
- USB port
- 500 MB free memory on the hard disk (for programme and data)
- CD-ROM drive
- Sound card



The processor, main memory and magnetic disk requirements depend on the size of the music files you wish to edit.

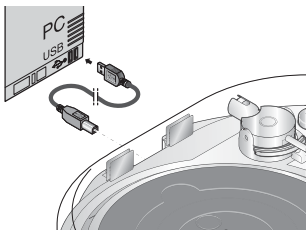
### Connecting to a PC



You can connect the record player simultaneously to a hi-fi system and a PC. You can then listen in during the recording if your PC does not have speakers or a headphone connection.

1. Connect the record player to an easily accessible wall socket by means of the mains plug.
2. Boot your PC.





3. Plug the square-shaped plug on the supplied USB cable into the USB port on the back of the record player.
4. Plug the rectangular plug on the cable into a USB port on your PC.  
Depending on the operating system, your computer might display a message saying that the record player has been recognised as a new device and is available to use.

You can now install the enclosed software.

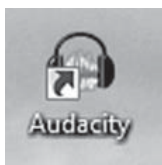
### Installing software

1. Insert the enclosed CD in your CD-ROM drive.
2. Launch the software by double clicking on the "audacity-win-1.2.6.exe" file on the CD.  
Or: Under "Start" open the "Run" function and enter "D:\audacity-win-1.2.6.exe". The "D" is an example for the identification of your CD drive.
3. During installation, follow the instructions on the screen.

### Basic settings



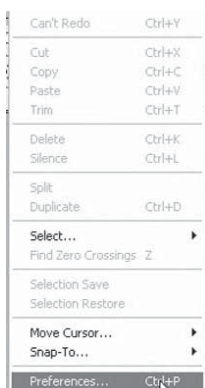
Depending on the version of the operating system and your PC's configuration, devices might be identified differently on your PC.



1. Launch "Audacity" by double clicking on the programme icon.

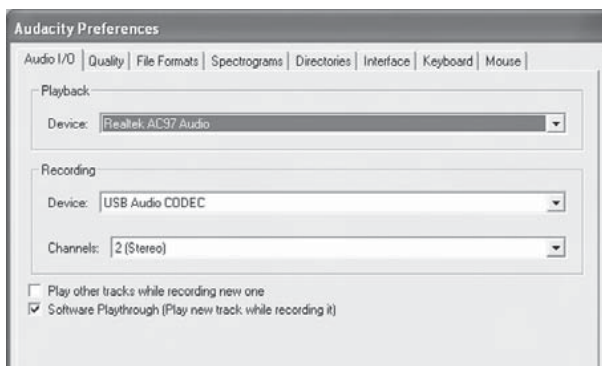


The first time you launch "Audacity" you can select a language for the programme interface.



2. Select "Preferences..." in the "Edit" menu. The "Audacity Preferences" window appears.

3. Make the following settings in this window:  
**Under "Audio I/O"**



"Playback" / "Device":

Here you need to select your sound card, e.g. "Speaker (Realtek)".

"Recording" / "Device":

"Microphone (USB Audio CODEC)"; this selects the record player as the input device.



"USB Audio CODEC" only appears as a setting option when the record player is connected to the PC.

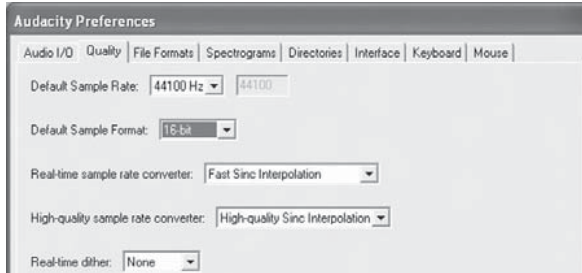
"Recording" / "Channels":

"2 (Stereo)"; to obtain stereo recordings.

"Software Playthrough (Play new track while recording it)":

must be activated (insert tick) to enable you to listen in during the recording.

## Under "Quality"



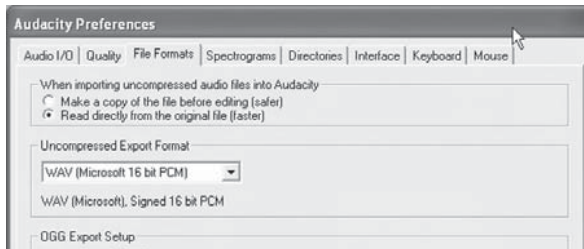
"Default Sample Rate":

"44100 Hz"; the sample frequency used for CDs.

"Default Sample Format":

"16 bit"; the sample format used for CDs.

## Under "File Formats"

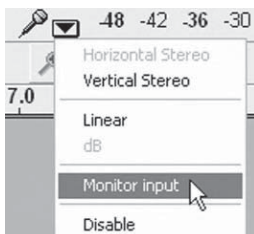


"Uncompressed Export Format":

"WAV (Microsoft 16bit PCM)"; the format with which audio CDs can be created later.

4. Click on "OK" to save the settings.

## Listening to Monitor input via PC speakers



5. In the main Audacity window you will find a microphone icon beneath the output level indicators and next to it a button with a black arrow pointing downwards.

Click on the arrow and select "Monitor input" in the dropdown menu.

Green or red bars appear in the display above.

You can now start recording.



You must select the setting "Monitor input" each time you record. The other settings are stored, although they may be lost when you disconnect the record player from the PC.

## Recording



Check the system settings if you are unable to record despite making the correct settings under Audacity:

For **Windows XP** the record player ("USB Audio CODEC") must be selected in the "Control Panel" under "Sounds and Audio Devices" / "Voice" / "Voice recording".

Your sound card must be selected under "Sounds and Audio Devices" / "Voices" / "Voice playback" (not: "USB Audio Codec").

The same settings must be selected under "Sounds and Audio Devices" / "Audio" / "Sound recording" or "Sound playback".

For **Windows Vista** the record player ("Microphone USB Audio Codec") must be selected in the "Control Panel" under "Hardware and Sounds" / "Sound" / "Recording".

Your sound card must be selected under "Hardware and Sounds" / "Sound" / "Playback" (not: "USB Audio Codec").

You will find further information about the "Control Panel" in the Help for your operating system.

1. Lift the cover until it clicks into place.
2. Place the record on the turntable.
3. Set the required rpm by pressing the **33** or **45** button.
4. Remove the protective cap, if necessary, by pulling it downwards from the pick-up system.
5. Push the tone arm locking lever to the right.
6. Press the **LOWER RAISE** button to raise the tone arm.
7. Guide the tone arm across the record to the track you wish to record. The turntable starts to turn.
8. Click on the record button. The recording begins.



9. Press the **LOWER RAISE** button to lower the tone arm. Playback begins.

The waveform of the recording is displayed on the screen. You can also listen

to the recording over headphones, speakers or your hi-fi system, depending on the setting.



If the recording is not displayed or you cannot hear it, check the cable connections and settings. You will find some hints under "Fault/Remedy".

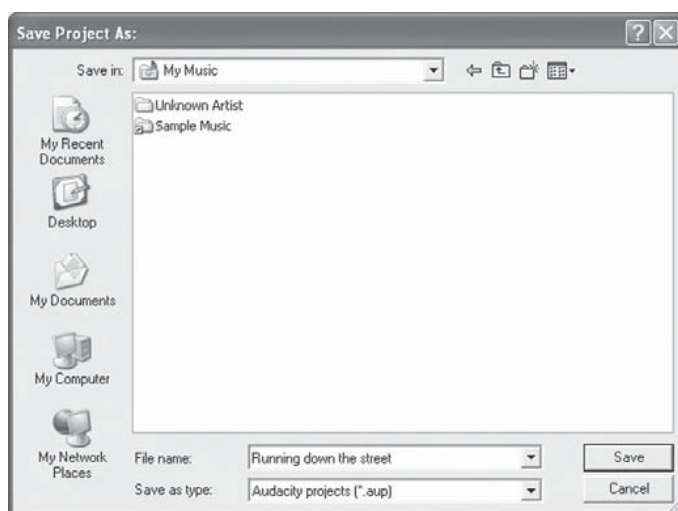


10. Click on the stop button. The recording ends.

11. Select "Save project" in the "File" menu. The "Save Project As" window appears.



The project file can only be read by Audacity. For further editing or playback with another programme the recordings need to be converted (see "Exporting tracks").



12. Select a storage location, enter a file name and click on "Save" to store the project file.
13. Press the **STOP** button on the record player, if necessary, to end the playback. The tone arm automatically returns to the tone arm rest. The turntable stops.
14. Push the tone arm locking lever to the left.
15. Close the cover.

## Listening to a recording



- Click on the playback button to play back the recording. The playback is controlled via the buttons in the menu bar.

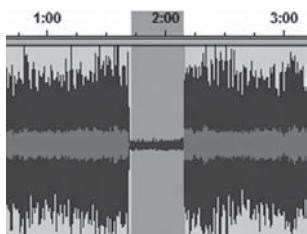
## Editing an audio signal (optional)



In the "Effect" menu you will find a series of functions with which you can edit your recordings. This allows you to change the volume ("Amplify"), balance deviations in volume ("Normalize...") or fade recordings in or out ("Fade In" or "Fade Out"). You will find further information about the individual effects in Help in Audacity or at <http://audacity.sourceforge.net>.

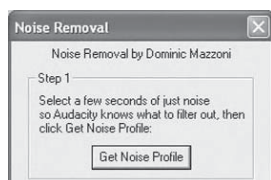
When records are converted to digital files a certain amount of background noise is also digitalised, e.g. the crackling and hiss of older records in particular. Audacity helps reduce these background noises.

## Removing noise

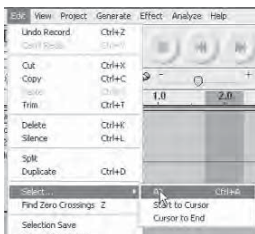


1. Mark with the cursor an area in your recording in which there is no music but only background noise heard. Areas between the tracks of a long playing record are especially suitable for this.

2. Select "Noise removal..." in the "Effect" menu. The "Noise Removal" window appears.



3. Click on "Get noise profile". The window closes and Audacity creates a noise profile with the background noises that are to be removed.



4. Mark with the cursor the part of the recording that is to be edited, or select "All" under "Select..." in the "Edit" menu.

5. Select "Noise Removal..." again in the "Effect" menu. The "Noise Removal" window appears.



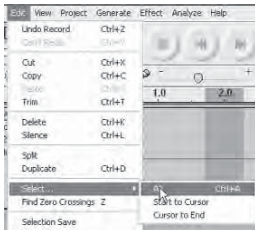
6. Use the slider to set the strength of the effect.

7. Click on "Preview" to check the effect.

**Attention:** Only use Effect with great care, otherwise parts of the recording will also be erased with the noise.

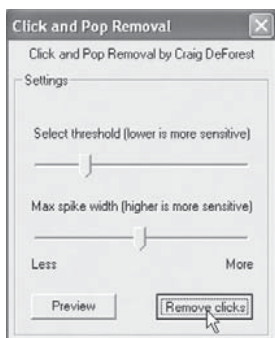
8. Click on "Remove Noise". The window closes and Audacity removes the noise. This may take several minutes, depending on the length of the recording.

## Removing clicks



1. Mark with the cursor the part of the recording that is to be edited, or select "All" under "Select..." in the "Edit" menu.

2. Select "Click Removal..." in the "Effect" menu. The "Click and Pop Removal" window appears.



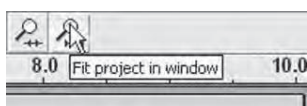
3. Use the slider under "Select threshold" to set the sensitivity of the filter.
4. Use the slide control under "Max. spike width" to set the maximum length of the click that is to be removed.
5. Click on "Preview" to check the effect.

**Attention:** Only use Effect with great care, otherwise parts of the recording will also be erased with the click.

6. Click on "Remove clicks". The window closes and Audacity removes the clicks. This may take several minutes, depending on the length of the recording.

### Splitting a recording into separate tracks

If you wish to convert all the tracks on a record into digital files it is worth recording each side of the record "in one piece" first and then splitting it into separate tracks.



1. Click on the "Fit project in window" tool. The whole recording is now shown in the editing window.

If there are still unwanted gaps before, in or after your recording you should remove them before splitting the recording.



2. Mark unwanted gaps, if applicable, with the cursor and click on the "Cut" tool.

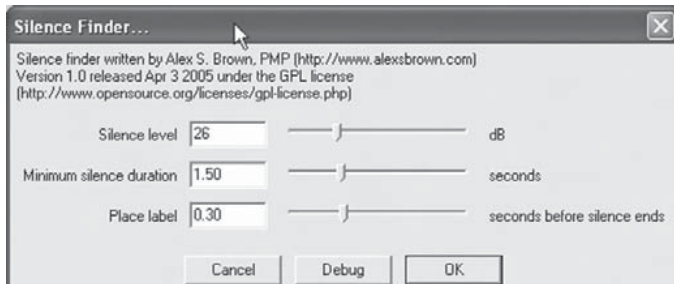
3. Then again mark with the cursor the whole recording that is to be edited, or select "All" under "Select..." in the "Edit" menu.

You can split the recording manually or do it automatically.

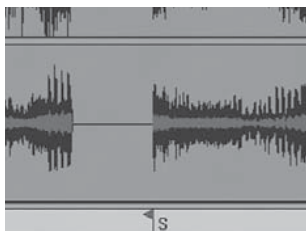


## Automatically splitting your recording

1. Select "Silence Finder..." in the "Analyze" menu. The "Silence Finder" window appears.



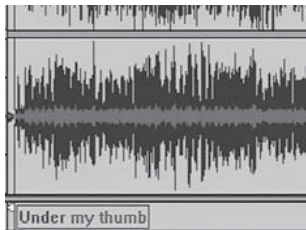
2. Enter "15" after "Silence Level" and click on "OK". The recording will then be analysed.



A label track will appear underneath the recording containing markers (vertical lines) representing the beginning of each recognised new track.



If the "Silence Finder" inserts too few, too many or wrong markers, you can undo the operation and repeat using a different setting. Select "Undo Silence Finder" in the "Edit" menu and repeat steps 1 and 2 with different values in the "Silence Finder..." window. If you cannot obtain good results, split your recording into tracks manually, as described under "Manually splitting your recording".



3. Enter the name of the track in the text field next to the markers. This entry will later be used as the file name.

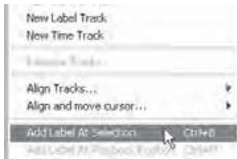
4. Select "Save Project" in the "File" menu. The project file is stored.

## Manually splitting your recording

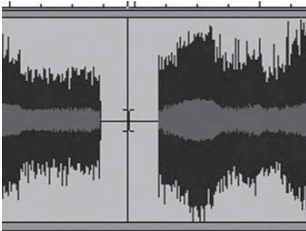
1. Click on the "Skip to Start" button.



2. Select "Add Label at Selection" in the "Project" menu to determine the starting point of the first track.

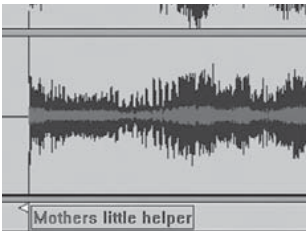


3. Position the cursor at a point between the first and second track where there is no visible waveform.



4. Right click on this point. A vertical line appears.

5. Select "Add Label at Selection" in the "Project" menu to determine the starting point of the second track.
6. Repeat steps 3,4 and 5 until the starting points have been determined for all of the tracks.



7. Enter the names of the tracks in the text fields next to the markers. These entries will later be used as file names.

8. Select "Save Project" in the "File" menu. The project file is stored.

## Exporting tracks



Audacity can export the files in different formats, e.g. as a WAV, OGG or MP3 file.

WAV is a standard Windows format played by the Windows Media Player and many MP3 players. WAV files are needed to create audio CDs. The music quality is very good, but the files do become very big.

OGG and MP3 are compressed and so they use less memory.

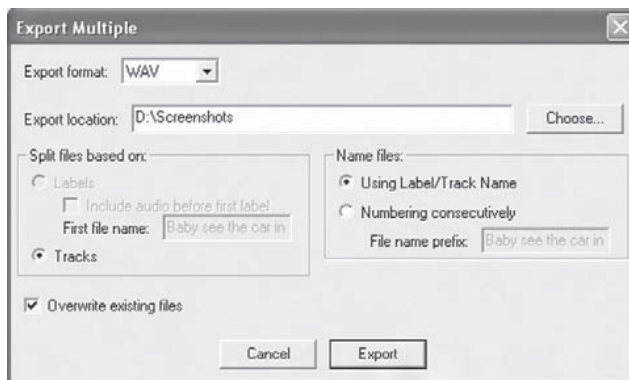
Compression may detract from the sound quality.

To export MP3 files you need a separately available encoder (see "Exporting as an MP3 file").

## Exporting as WAV files

As soon as you have split your recording into tracks (and named them) you can export the tracks as separate files.

1. Select "Export Multiple..." in the "File" menu. The "Export Multiple" window appears.
2. Select the following options in the "Export Multiple" window:



"Export format": "WAV",

"Export location":

the storage location for your file, e.g. a folder with the title of the converted record,

"Split files based on" :

"Labels", to import your split tracks,

"Name files":

"Using Label/Track Name" to import the names you gave them as file names.  
3. Click on "Export". The files are created and stored in the selected directory.

### Exporting as an MP3 file

If you wish to export your recordings as MP3 files you will need a separately available MP3 encoder. Audacity uses the freely available LAME MP3 library. You will find details on how to download the file and how to install it on the Internet at <http://audacity.sourceforge.net>.

### Burning WAV files to a CD / Copying MP3 files to your player

You will find details on burning an audio CD and copying files to an MP3 player in the instructions accompanying your burn programme or your MP3 player.

---

## Cleaning



### **DANGER** - risk of fatal electric shock

- Remove the mains plug from the wall socket before cleaning the appliance.
- The appliance must not be exposed to moisture. Also protect it from water drops or splash water

### **CAUTION** - material damage

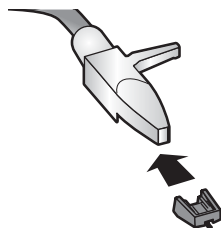
- Do not use any caustic, aggressive or abrasive cleaning products for cleaning.

- Whenever necessary, use a soft, slightly dampened cloth to clean the housing.
- Clean the stylus regularly. You can brush off fluff and small bits of dirt with a soft brush, brushing from the back to the front. For more stubborn dirt, add a little cleaning spirit to the brush.

## Changing the stylus

You should replace the stylus on the pick-up after about 250 operating hours in order to maintain the playback quality and avoid damage to your records.

1. Push the tone arm locking lever to the left.
2. Remove the protective cap, if necessary, by pulling it downwards from the pick-up system.
3. Pull the stylus together with its holder forwards and away from the pick-up system.



4. Push the new stylus together with its holder onto the pick-up system from the front.



If the pick-up system needs to be replaced, please contact the Service Centre.

---

### FCC NOTICE

NOTE: This equipment has been tested and found to comply with the limits for a Class B digital device, pursuant to Part 15 of the FCC Rules. These limits are designed to provide reasonable protection against harmful interference in a residential installation. This equipment generates, uses and can radiate radio frequency energy and, if not installed and used in accordance with the instructions, may cause harmful interference to radio communications. However, there is no guarantee that interference will not occur in a particular installation. If this equipment does cause harmful interference to radio or television reception, which can be determined by turning the equipment off and on, the user is encouraged to try to correct the interference by one or more of the following measures:

- Reorient or relocate the receiving antenna.
- Increase the separation between the equipment and receiver.
- Connect the equipment into an outlet on a circuit different from that to which the receiver is connected.
- Consult the dealer or an experienced radio/TV technician for help.

#### NOTE:

THE MANUFACTURER IS NOT RESPONSIBLE FOR ANY RADIO OR TV INTERFERENCE CAUSED BY UNAUTHORIZED MODIFICATIONS TO THIS EQUIPMENT. SUCH MODIFICATIONS COULD VOID THE USER AUTHORITY TO OPERATE THE EQUIPMENT.