

Xtreme Quick Installation Guide

FCC Statement

*This equipment complies with FCC radiation exposure limits set forth for an uncontrolled environment. End users must follow the specific operating instructions for satisfying RF exposure compliance. This transmitter must not be co-located or operating in conjunction with any other antenna or transmitter. **Notice: Any changes or modification not expressly approved by the party responsible could void the user's authority to operate the device.***

This device complies with part 15 of the FCC Rules. Operation is subject to the following three conditions: (1) This device may not cause harmful interference, (2) this device must accept any interference received, including interference that may cause undesired operation. —

This device operates at a transmission rate of 1Mbps, and only use the GFSK modulation.

Product Introduction

The xtreme Bluetooth Module allows a computer with a parallel port to communicate with other Bluetooth-enabled devices. When used with the Bluetooth application software, it can perform wireless network applications such as information exchange, file transfer, network access, dial-up networking, headset, audio gateway, printer application, and so on.

Package Contents

- Installation CD ROM
- Bluetooth Module interface SPI
- Quick Installation Guide

System Requirements

- PC with Pentium Processor 1GHz or higher
- RAM 512M or above
- Screen: 800*600 or above
- Display: adapter True Color 16bits or above.
- Microsoft Window XP or above

Installation Steps

Step 1: Insert CD into the CD rom of a computer.

Step 2: Double click on Xtool Advance Setup v0112.exe file. The following screen will show up.

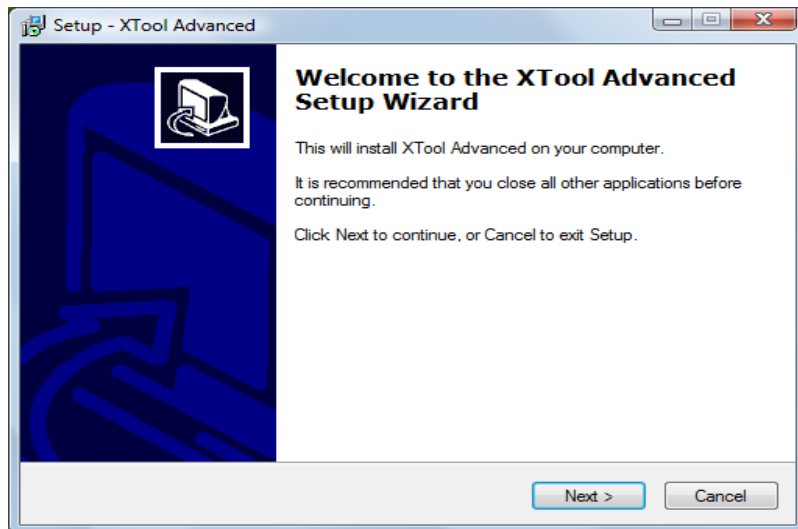


Figure 1. Xtool welcome screen

Step 3: Click on Next, then select if you want to create a desktop icon.

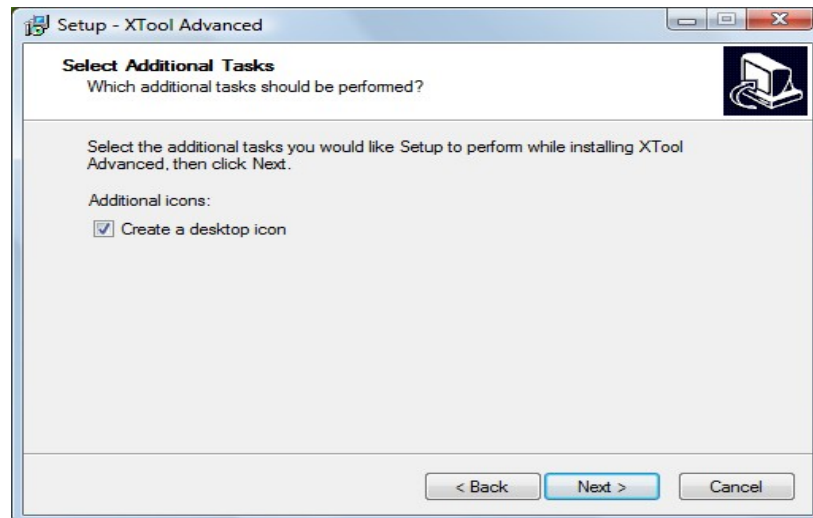


Figure 2 Xtool setup procedure 2

Step 4: Follow the on screen instruction to install Xtool. Choose reboot computer to make sure Xtool installed properly.

Running Xtool Advance

Step 1: Double-click on the Xtool Advance icon on desktop to run the software as shown below.

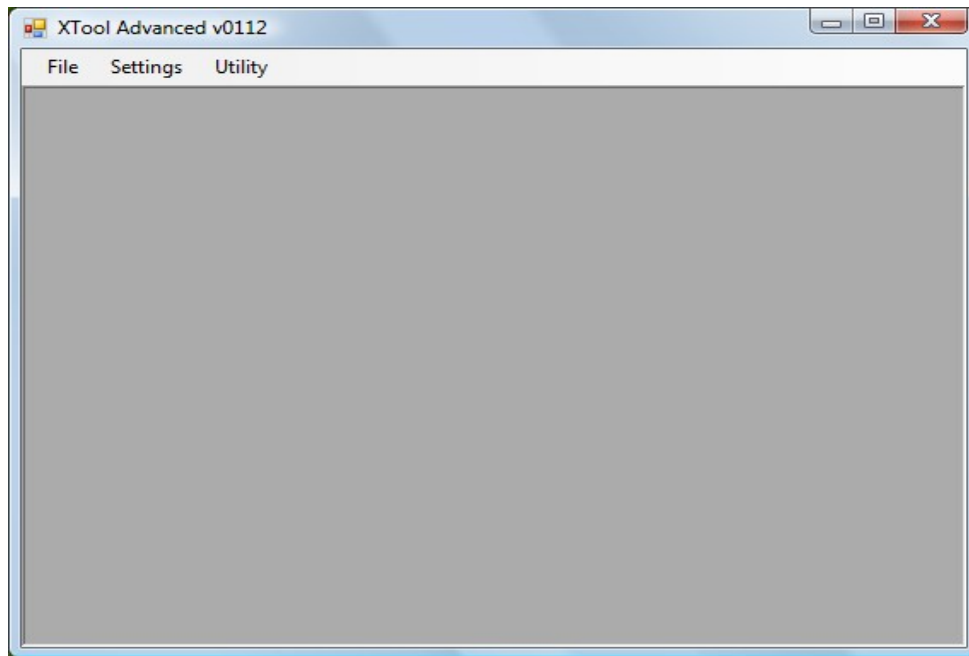


Figure 3. Xtool running

Step 2: Make sure your interface board is connected to computer and bluetooth module correctly. After completing the connection, click on "Utility", and choose "Bluetooth Tester". The following screen will show up.

Note: If you don't have the bluetooth module connected properly, you will get an error message.

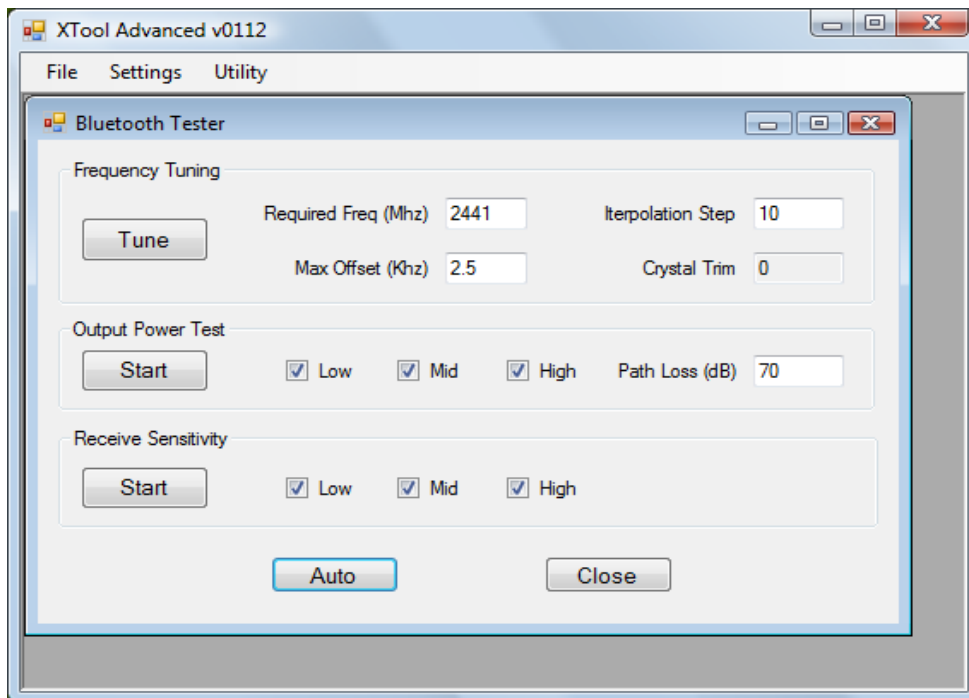


Figure 4 Bluetooth Tester

Step 3: By combining with other RF equipment, such as CSR DEV-SYS-1455-2A,, you can tune the bluetooth module, put it into transmit mode or receive mode.

This equipment has been tested and found to comply with the limits for a Class B digital device, pursuant to Part 15 of FCC Rules. These limits are designed to provide reasonable protection against harmful interference in a residential installation. This equipment generates, uses, and can radiate radio frequency energy. If not installed and used in accordance with the instructions, it may cause harmful interference to radio communications. However, there is no guarantee that interference will not occur in a particular installation.

If this equipment does cause harmful interference to radio or television reception, which can be determined by tuning the equipment off and on, the user is encouraged to try and correct the interference by one or more of the following measures:

- Reorient or relocate the receiving antenna
- Increase the distance between the equipment and the receiver.
- Connect the equipment to outlet on a circuit different from that to which the receiver is connected.
- Consult the dealer or an experienced radio/TV technician for help.

TO OEM installer:

1. FCC ID label on the final system must be labeled with "Contains FCC ID: Y3TE05" or "Contains transmitter module FCC ID: Y3TE05".
2. In the user manual, final system integrator must be ensure that there is no instruction provided in the user manual to install or remove the transmitter module.
3. Transmitter module must be installed and used in strict accordance with the manufacturer's instructions as described in the user documentation that comes with the product. This device complies with the following radio frequency and safety standards.

The user manual of the final host system must contain the following statements:
USA-Federal Communications Commission (FCC)

This device complies with Part 15 of the FCC Rules. Operation is subject to the following two conditions: (1) this device may not cause harmful interference, (2) this device must accept any interference received, including interference that may cause undesired operation and (3) this device operates at a transmission rate of 1Mbps.

Any changes or modifications not expressly approved by the party responsible for compliance could void the user's authority to operate the equipment.

Caution: Exposure to Radio Frequency Radiation.

This device must not be co-located or operating in conjunction with any other antenna or transmitter.

The modular transmitter will be labeled with its own ID. Also the OEM host computer manufacturer will be informed to display a label referring to the enclosed module. The label on the final system must be labeled with "Contains IC: 8324A-E05".

This device complies with RSS 210 of Industry Canada.

"Operation is subject to the following two conditions: (1) this device may not cause interference, and (2) this device must accept any interference, including interference that may cause undesired operation of the device."

"This Class B digital apparatus complies with Canadian ICES-003."

Cet appareil numérique de la classe B est conforme à la norme NMB-003 du Canada.