

PENNINGTON

pond monsta

**the complete pond
cleaning system**

PRODUCT GUIDE

GUARANTEE

This product is guaranteed against defects in material and workmanship for 2 years from the date of purchase, under normal usage. The guarantee DOES NOT APPLY in case of improper use, negligence, lack of maintenance or accidental damage to either the Pond Monsta or the Pond Monsta collector. If the Pond Monsta or the Pond Monsta collector fails due to a manufacturing fault within this period it will be either repaired or replaced free of charge. Liability is limited to replacement of the faulty product only; no other costs will be reimbursed.

The guarantee is not transferable and does not affect your statutory rights. This guarantee does not confer any rights other than those expressly set out above. Excludes consumable parts (batteries, filter mesh, impellers and hose). If any parts are needed, spares are available from your retailer. Please see getting to know your Pond Monsta on pages 2 to 5 for spares codes and part descriptions.

CONSUMER ADVICE CONTACT DETAILS

1-800-285-7333

Pennington
1280 Atlanta Hwy.
Madison, GA 30650

Attn: Customer Marketing Department

www.penningtonseed.com/pondmonsta

IMPORTANT

**Please attach proof of purchase to this manual
and file in a safe place.**

CONTENTS

	Page
Getting to know your Pond Monsta	2-3
Electrical Information	2
Radio Frequency Receiver	2
Parts Description	3-4
Spare Part Codes	3-4
 Getting to know your Monsta Collector	 5-6
Parts Description	5
Spare Part Codes	6
Technical Specification	6
 How to use Pond Monsta	 7-10
Minimum Start Depth	7
Handle Activation and Battery Installation	8
Clearing Blockages	9
Monsta Collector Recycling Water Options	9
Cleaning Collected Waste	10
Storage	10
 Maintenance	 11
Removing and Fitting Impeller	11
Troubleshooting	12
Faults and Problems Procedure	12
Consumer Contact Information	12
Guarantee	Back Cover

ELECTRICAL INFORMATION

Electrical Information



The power supply must meet the specifications on the product.

The electric cable is permanently connected and sealed in the motor body. If the supply cable is damaged the pump must not be used.

Do not use the supply cable to lift the Monsta pump as this may cause damage.

Pennington Pond Monsta must not be used in swimming pools, or areas where people are in contact with the water.



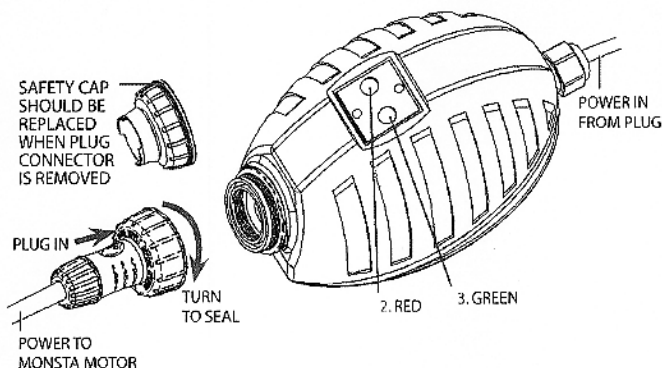
Warning - The Monsta pump is provided with a thermal cut out that temporarily switches off the pump in case of overheating and the pump may automatically restart.



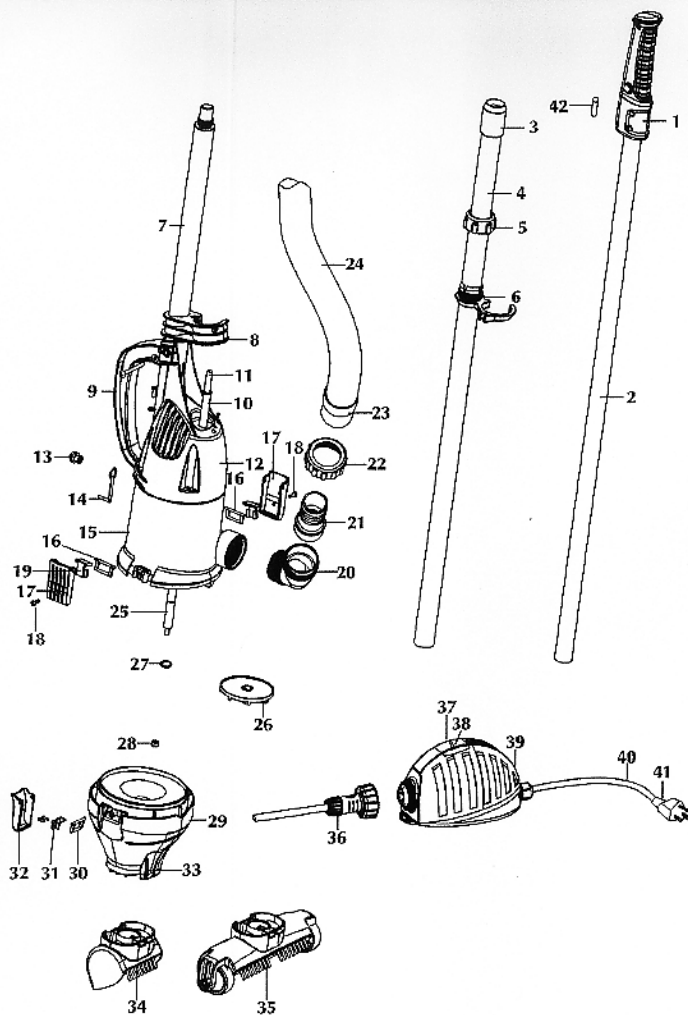
Never run the Monsta out of water for prolonged periods as this may cause irreparable damage.

RADIO FREQUENCY RECEIVER

1. NO LIGHTS - Check to see if Pondmonsta is plugged in and receiving power.
2. RED LIGHT - Receiver is on stand-by. Power is received. Handle lever not compressed.
3. GREEN LIGHT - Power on. Monsta motor receiving power. Handle lever compressed.



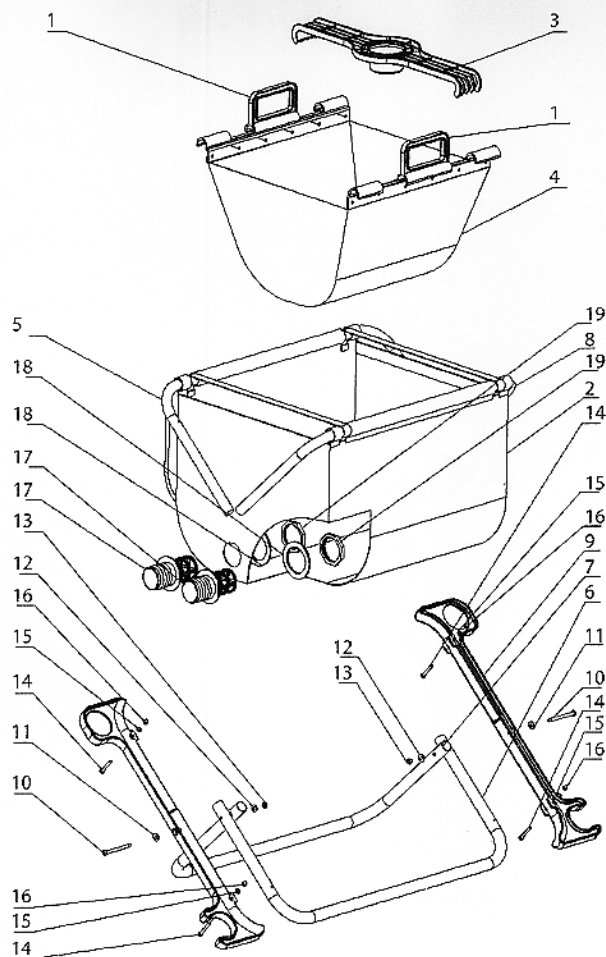
GETTING TO KNOW YOUR POND MONSTA



GETTING TO KNOW YOUR POND MONSTA

Part	Description
1.	Handle
2.	Extendable pole, top section
3.	Pole cap
4.	Extendable pole, base section
5.	Locking nut, hose / cable clip
6.	Hose/cable clip
7.	Fixed pole section
8.	Hose guide
9.	Carry handle
10.	Rubber cable guide
11.	10m rubber cable
12.	Motor housing
13.	Air outlet
14.	Air outlet cleaning spike
15.	Clear impeller housing
16.	Impeller cover clip spacers
17.	Impeller cover clips
18.	Impeller cover clips screws
19.	Stainless steel clip spacer retainer
20.	Outlet clear elbow
21.	Outlet clear hoesail
22.	Outlet locking nut
23.	Optional hose clip fixing point
24.	19'6" (6m) 1½" Hose supplied
25.	Impeller shaft
26.	Medium pond, 3.15" (80mm) impeller
27.	Impeller washer
28.	Impeller lock nut
29.	Impeller cover
30.	Monsta head clip, spacer & screws
31.	Monsta head clip, spacer retainer
32.	Monsta head clip
33.	Monsta head back clip
34.	3.9" (10 cm) Power brush head
35.	7.9" (20cm) wheeled brush head
36.	Power connector plug
37.	Red power on standby indicator light
38.	Green Power on indicator light
39.	Radio frequency receiver
40.	9'9" (3m) rubber cable
41.	Three pin plug
42.	Remote control handle battery

GETTING TO KNOW YOUR MONSTA COLLECTOR



GETTING TO KNOW YOUR MONSTA COLLECTOR

Part	Description
1.	Filter net handles
2.	Collector water tight body
3.	Monsta waste inlet locator, support clip
4.	Filter mesh
	Spare filter mesh
5.	Top left Collector pole
6.	Bottom right Collector pole
7.	Bottom left Collector pole
8.	Top right Collector pole
9.	Hose reel
10.	Center screw
11.	Center washer
12.	Center back washer
13.	Center nut
14.	Hose reel screws
15.	Hose reel washers
16.	Hose reel nuts
17.	Collector outlets
18.	Rubber outlet washer
19.	Outlet back nuts

TECHNICAL SPECIFICATIONS & PERFORMANCE

Voltage	120V
Hertz	60Hz
Watts	387
Safety Rating	ETL/CE
Cable fitted	32.8' + 9.8' (10m + 3m)
Remote control handle battery	GA 23A Alkaline Battery
Maximum flow impeller	2060.541 gal/hr (7800 lt.hr)
Maximum lift impeller	12' 5.60" (3.8m)

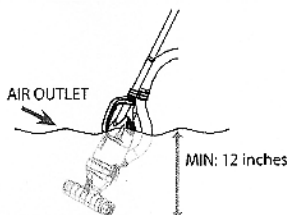
HOW TO USE POND MONSTA



MINIMUM START DEPTH

Water level **MUST** cover the
Air Outlet before starting Monsta.

Minimum water depth = 12 inches



**TURN OFF AND ALLOW AIR TO EXIT
AIR OUTLET BEFORE RESTARTING.**

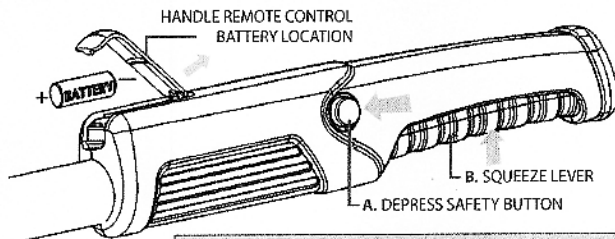
HOW TO USE POND MONSTA

Ensure that the remote control handle battery is installed. (see diagram below)

NOTE: Remove large objects over 1 1/4 inches in size with a net to prevent excessive blocking of Pondmonsta during operation. It is normal for Pondmonsta to require clearing of blockages occasionally. Pond Monsta has been designed so that this requires a minimum of time and effort (see 'Clearing Blockages' page 9)

1. Plug in.
2. Plug in RF receiver connector plug.
3. Connect hose to outlet elbow on vacuum firmly (a hose clip may be used to secure not supplied)
4. Choose Collector recycling option / position for Collector outlet returns. (see page 9)
5. Insert hose into Recycling Collector.
6. Connect hose and cable to hose cable clips.
7. Adjust pole by twisting and locking to a comfortable height.
8. Plug into wall outlet, standby light will show red on the RF receiver.
9. Submerge Monsta fully until air stops releasing from air outlet (the Monsta will not pump effectively until all air is released)
10. To start PondMonsta compress yellow safety button and squeeze green lever to activate pumping
11. To stop PondMonsta compress yellow safety button and squeeze green lever to cease pumping
12. Waste will now start to flow into the Collector, it is recommended that the higher shelf areas are cleaned first. Always move the Pond Monsta in a slow back and forth action to prevent disturbing the sediment and waste.
13. Clean the base of the pond, in a slow back and forth motion using the clear hose as a visual guide to indicate which areas have been cleaned.
14. When the Collector basket is full, turn off the Pondmonsta by compressing yellow safety button, squeeze the handle and remove the collected debris.

HANDLE ACTIVATION & BATTERY INSTALLATION TO START STEP A AND B, TO STOP REPEAT STEP A AND B



**WARNING: DO NOT SUBMERGE THE HANDLE IN THE POND
DO NOT RUN THE PUMP WITHOUT WATER**

NOTE: THE MANUFACTURER IS NOT RESPONSIBLE FOR ANY RADIO OR TV INTERFERENCE CAUSED BY UNAUTHORIZED MODIFICATIONS TO THIS EQUIPMENT. SUCH MODIFICATIONS COULD VOID THE USER AUTHORITY

REMINING This device complies with Part 15 of the FCC Rules. Operation is subject to the following two conditions: (1) this device may not cause harmful interference, and (2) this device must accept any interference received, including interference that may cause undesired operation

Changes or modifications not expressly approved by the party responsible for compliance could void the user's authority to operate the equipment.

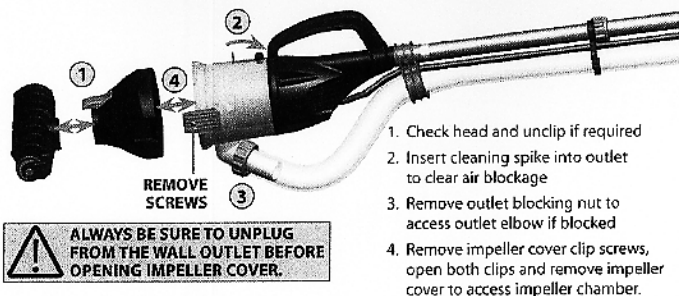
This equipment has been tested and found to comply with the limits for a Class B digital device, pursuant to part 15 of the FCC Rules. These limits are designed to provide reasonable protection against harmful interference in a residential installation. This equipment generates uses and can radiate radio frequency energy and, if not installed and used in accordance with the instructions, may cause harmful interference to radio communications. However, there is no guarantee that interference will not occur in a particular installation. If this equipment does cause harmful interference to radio or television reception, which can be determined by turning the equipment off and on, the user is encouraged to try to correct the interference by one or more of the following measures:

- Reorient or relocate the receiving antenna.
- Increase the separation between the equipment and receiver.
- Connect the equipment into an outlet on a circuit different from that to which the receiver is connected.
- Consult the dealer or an experienced radio/TV technician for help.

HOW TO USE POND MONSTA

CLEARING BLOCKAGES

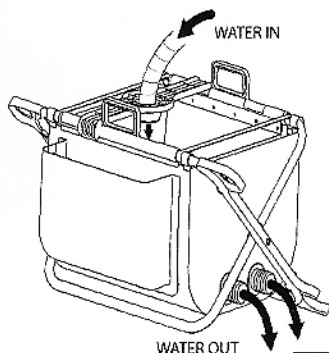
It is normal for your Pond Monsta to require clearing occasionally during operation. Pond Monsta has been designed so that this will require a minimum of time and effort.



MONSTA COLLECTOR RECYCLING WATER OPTIONS

With the use of the Monsta collector you can either recycle your pond water back into the pond, or it can go directly into your plant beds. Pond water is an excellent food source for your plants to grow tall and healthy.

Pond Monsta is completely safe to all adult healthy pond fish.



TO POND

If there is a low sludge content - recycle water back into pond.

TO GARDEN

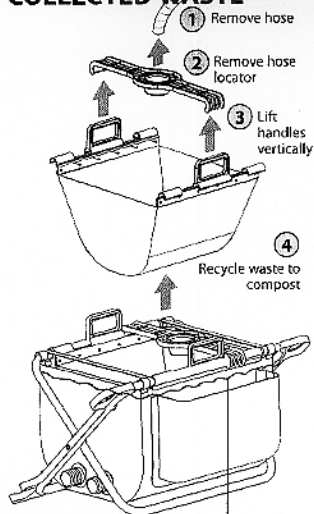
If there is a high sludge content or a beneficial partial water change is required- pump water into garden border.

TO DRAIN

If there is an excessively high sludge content - water can be filtered of large solids and pumped into waste or drain.

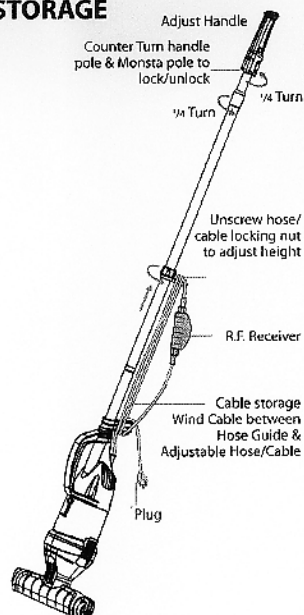
HOW TO USE POND MONSTA

CLEANING COLLECTED WASTE



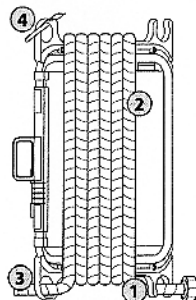
MAX FILL LEVEL
Empty Collector Filter when required

STORAGE



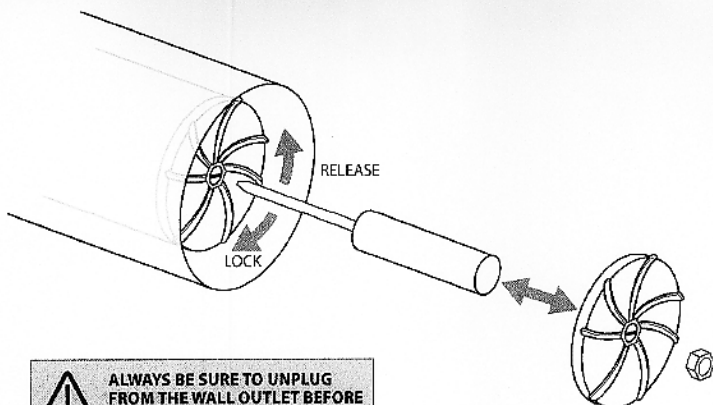
STORAGE

1. Clip in hose locking nut to start
2. Wind hose around reel
3. Insert hose to finish
4. Hanging hook



MAINTENANCE

REMOVING AND FITTING SPARE IMPELLER



- Step 1. Remove impeller cover.
- Step 2. Place flat-head screwdriver into center of the impeller.
- Step 3. Using your other hand, twist the impeller counter-clockwise.
- Step 4. After twisting the impeller six times counter-clockwise, the impeller will be free from the shaft.
- Step 5. Place spare impeller onto shaft with the grooves facing towards you.
- Step 6. Turn the impeller clockwise six times and it will be fitted correctly.

TROUBLESHOOTING

POOR FLOW FROM THE POND MONSTA

- Follow clearing blockages procedure page 9 check the hose attachment, the motor housing and the brush head inlet for blockages like large clumps of blanket weed, large stones, sticks or any other large pond debris.
- If the impeller has been changed, check that it has been correctly fitted. (see page 11)
- Ensure the outlet hose is not kinked or crushed.
- Only use smooth bore hose as hose with edges on the inside will restrict flow massively.
- Check that all air is released from air outlet.

NO POWER TO THE MOTOR

- **The LED is glowing red on the RF receiver but there is no action when activating the handle lever?** Check to see that the batteries are correctly fitted in the remote control handle and the handle doesn't have any water inside the casing. If it does place inside a warm area to let the water evaporate.
If the Monsta has been in used for prolonged periods, the battery will need replacing.
- **The Led's on the receiver are not glowing when plugged into the wall.** Check your house fuse box.
- **The Led's are glowing red on the receiver and turning green when the trigger on the handle is compressed but still no action from the motor?** This may mean the motor has overheated, the motor will reset when cooled after 15 minutes.

IMPORTANT

FAULTS - PROBLEMS PROCEDURE

Before returning your Pond Monsta to your dealer or contacting our Consumer Advice Department, please carry out the following steps. This will solve most problems quickly and easily.

1. Ensure electrical procedure has been followed fully. Check fuse and any cable connectors/switch boxes.

NOTE: If the pump has overheated the thermal overload will temporarily switch off the pump.

2. (a) Follow "Clearing Blockages" on page 9. (b) Follow "Troubleshooting" guide above.

CONSUMER ADVICE CONTACT DETAILS

1-800-285-7333

Pennington
1280 Atlanta Hwy.
Madison, GA 30650
Attn: Customer Marketing Department

www.penningtonseed.com/pondmonsta