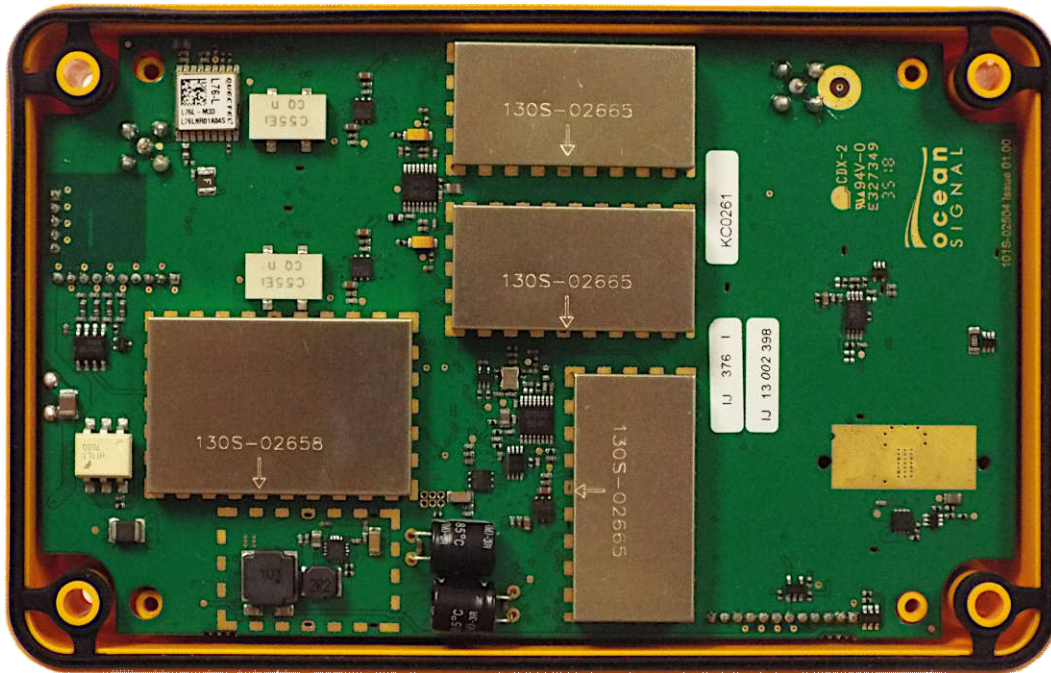


## Ocean Signal

### ***ATB1 Class B AIS Transponder - Internal Photographs***

Internal photos of the ATB1 showing internal construction and PCB assembly.



**Figure 1: Inside case view with PCB**



**Figure 2: Inside Case view**

**Note:** ACR CB2 case construction identical except for black colour of plastics

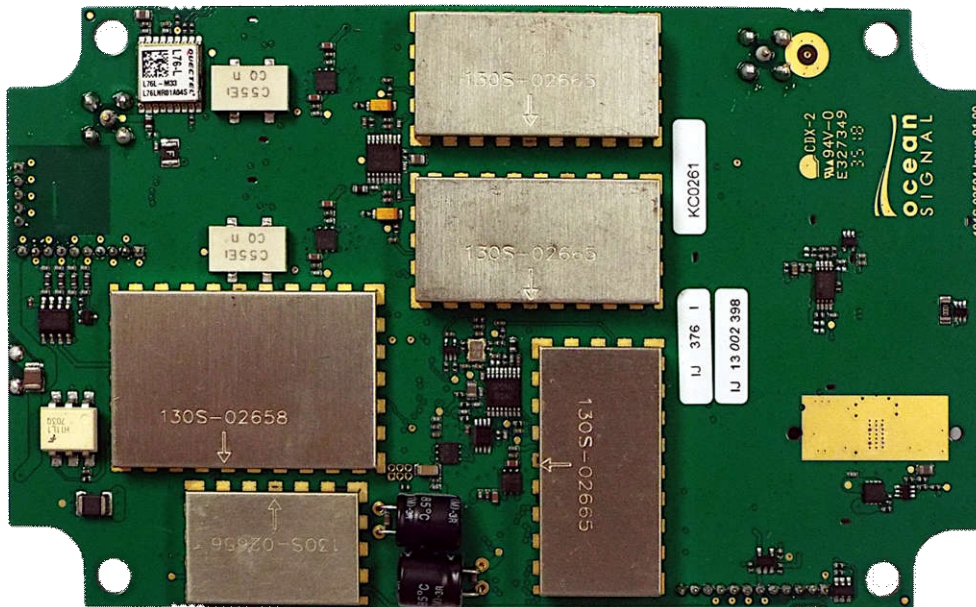


Figure 3: ATB1 Main PCB – Bottom side

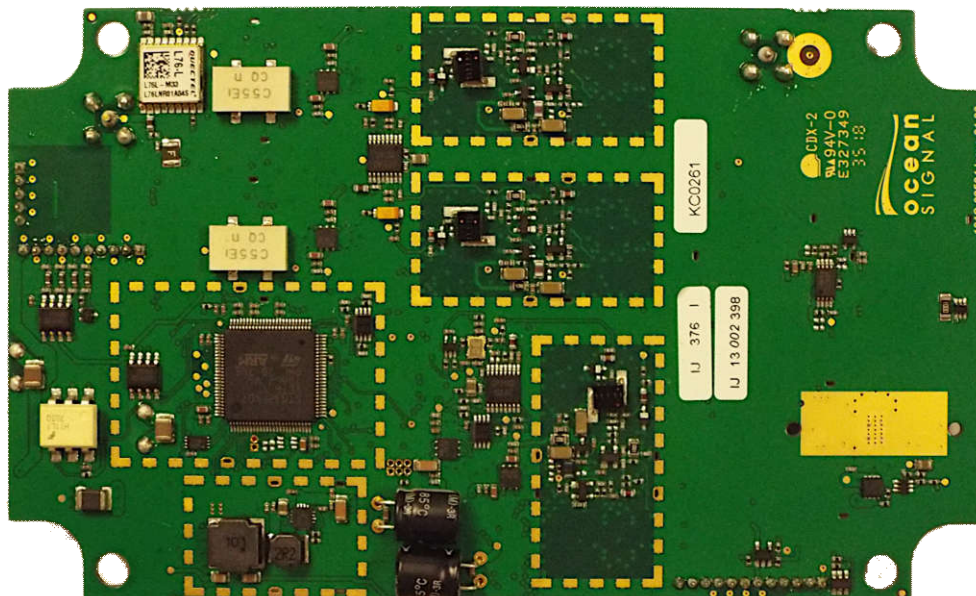


Figure 4: ATB1 Main PCB – Bottom side, screening cans removed



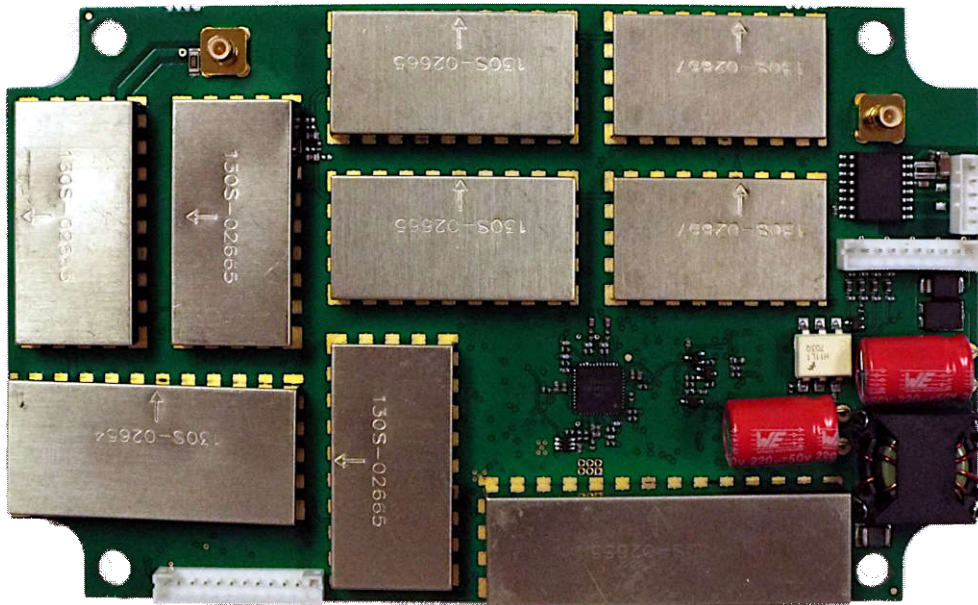


Figure 5: ATB1 Main PCB – Top Side

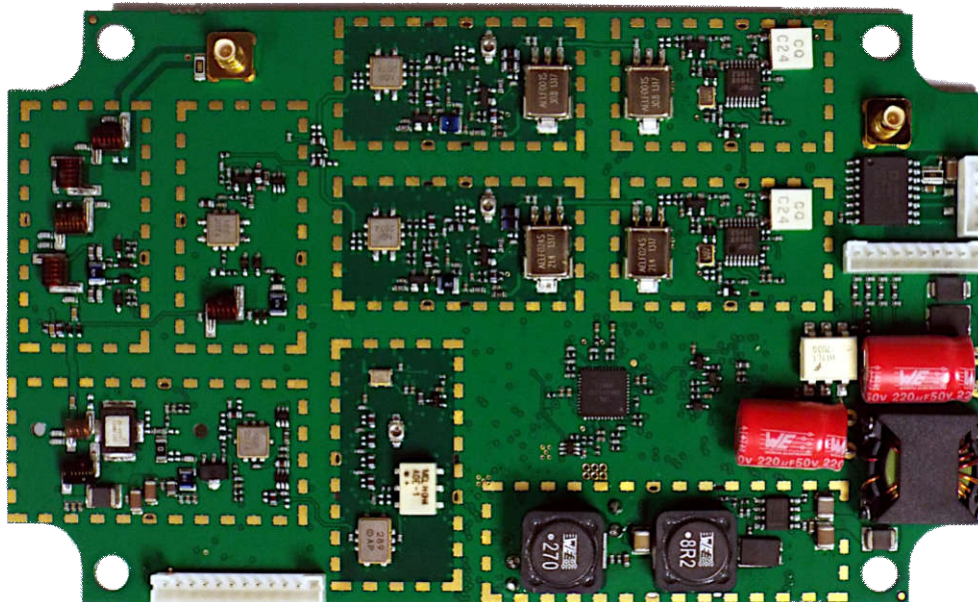
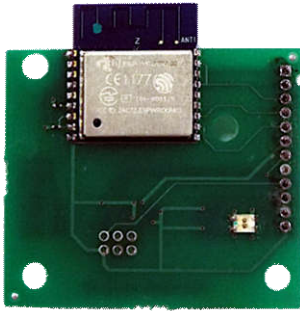
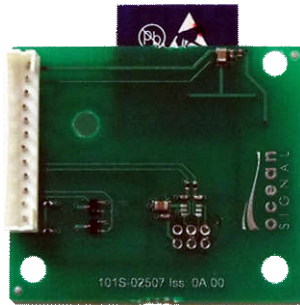


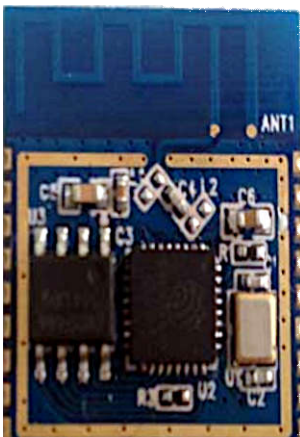
Figure 6: ATB1 Main PCB – Top side, screening cans removed



**Figure 7: ATB1 USB / WiFi PCB – Top Side**



**Figure 8: ATB1 USB / WiFi PCB – Bottom Side**



**Figure 9: Wi-fi module PCB with can removed** (Photo taken from FCC OET application for 2AC7Z-ESPWROOM02)