

## Ocean Signal

### ***ATA100 Class A AIS Transponder - Internal Photographs***

Internal photos of the ATA100 showing internal construction and PCB assembly.

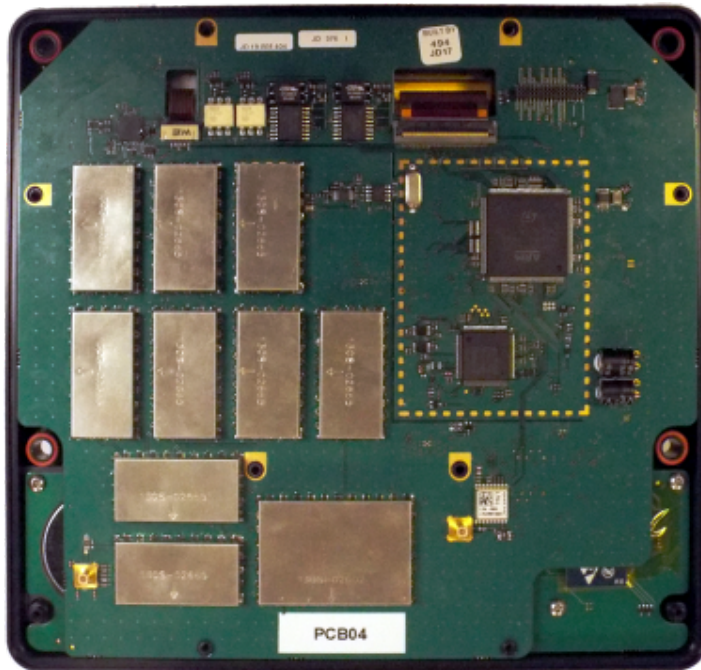


Figure 1: Inside case view with PCB and screen

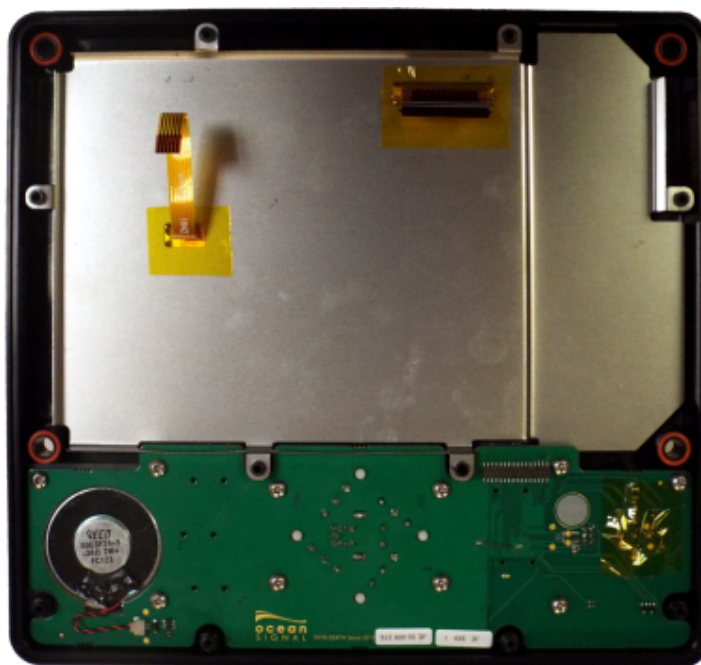


Figure 2: Inside Case view with main PCB removed Showing LCD and screen and Keypad PCB.

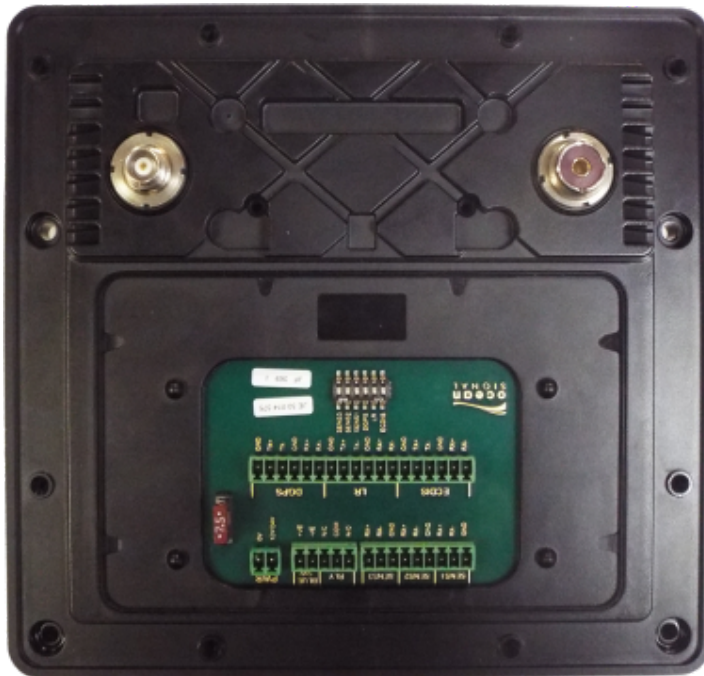


Figure 3: Inside Rear Case view with connector PCB installed.

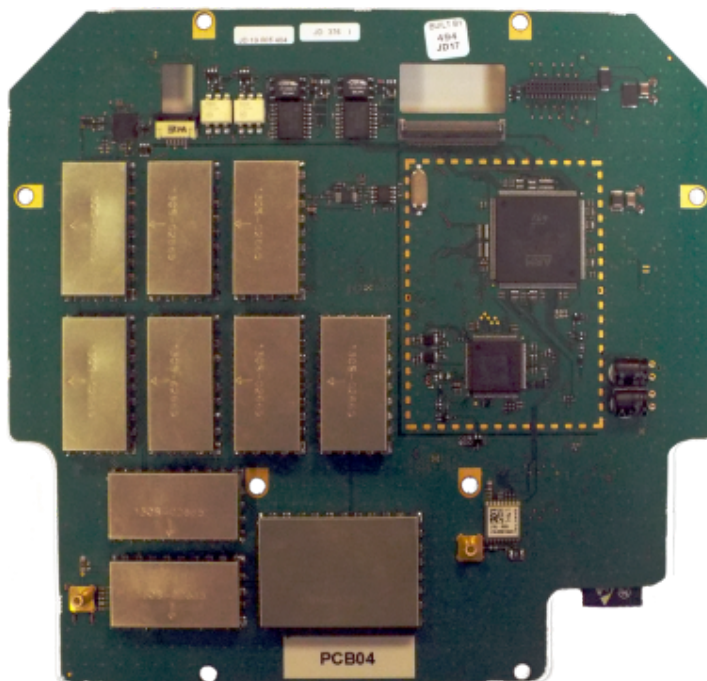


Figure 4: ATA100 Main PCB – Bottom side

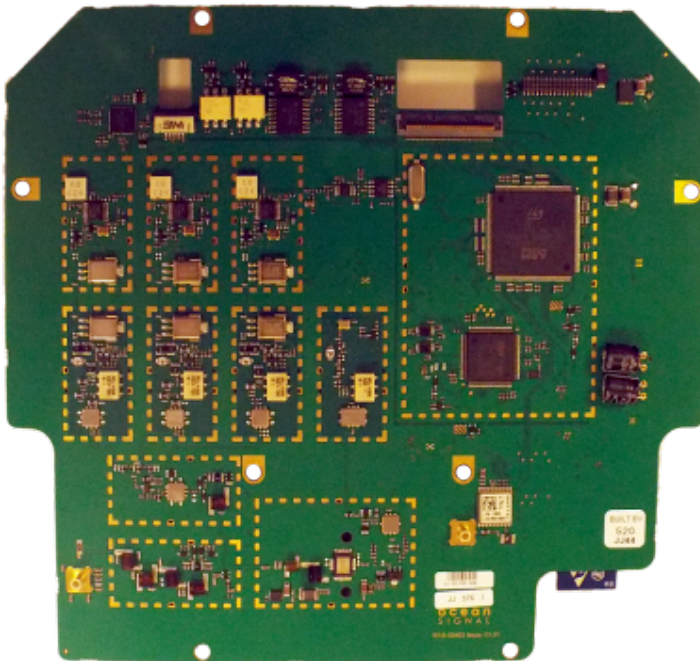


Figure 5: ATA100 Main PCB – Bottom side, screening cans removed

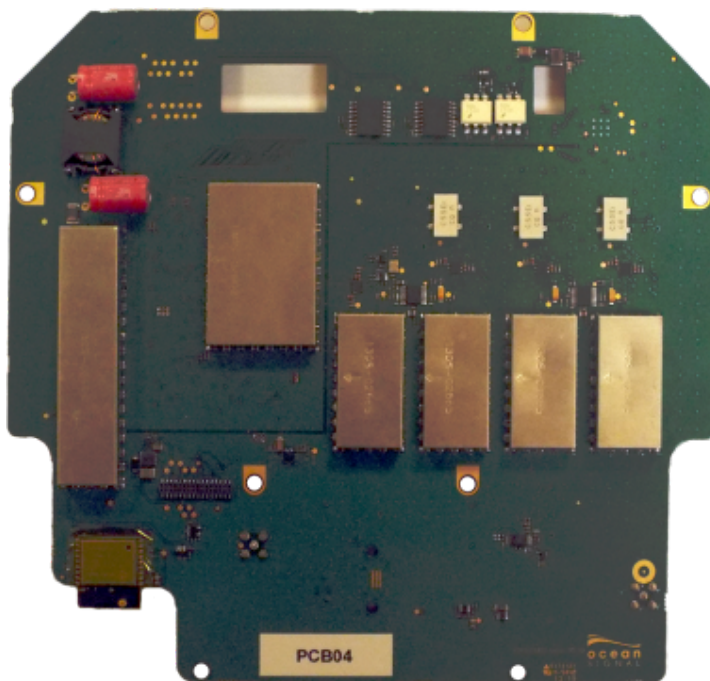


Figure 6: ATA100 Main PCB – Top Side



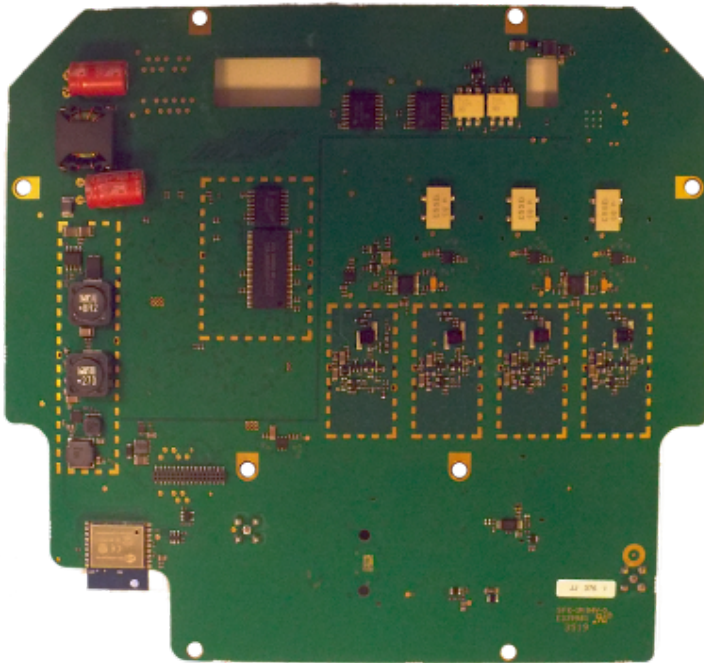


Figure 7: ATA100 Main PCB – Top side, screening cans removed

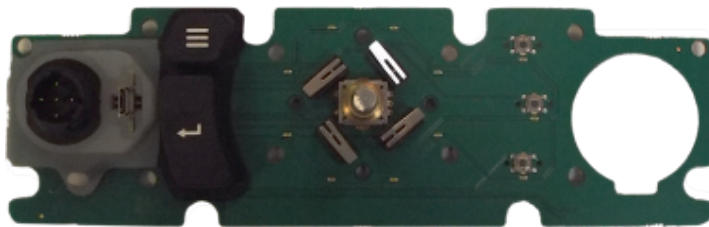
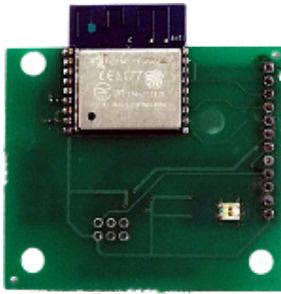


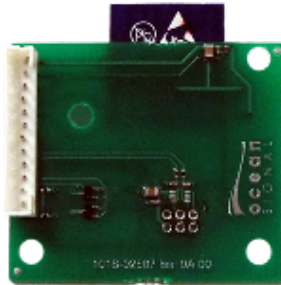
Figure 8: ATA100 Keypad PCB Front side



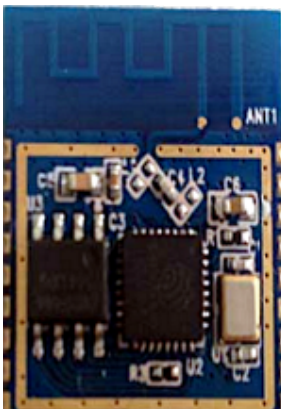
Figure 9: ATA100 Keypad PCB Rear side



**Figure 10: ATA100 USB / WiFi PCB – Top Side**



**Figure 11: ATA100 USB / WiFi PCB – Bottom Side**



**Figure 12: Wi-fi module PCB with can removed** (Photo taken from FCC OET application for 2AC7Z-ESPWROOM02)