

USB2.0 ATSC TV STICK USER'S MANUAL

Part 1 Product Instruction

Thank you for choosing USB 2.0 ATSC TV Stick!

The TV Stick adopts the latest digital audio-video multimedia processing chipset, supports ATSC/QAM HDTV signal receiving. It's built-in multinomial digital audio-video upgrading technology, with high anti-interfere ability, and the chroma is vivid. It is fully compatible with USB2.0 Hi-speed and Plug & Play standard, easy to install and use. The shape is delicate for carrying on conveniently. The shell is made of thick aluminum alloy materials, with anti-deformation, anti-fall, wear-resisting characteristics. Using the product, you can capture and record video of ATSC digital TV, which makes your computer a multimedia audio-video center. Enjoy your new digital audio-video life!

USB2.0 ATSC TV STICK USER'S MANUAL

1.1 Features

- ◆ Hi-speed USB2.0 port, Plug & Play
- ◆ Powered via USB without adaptor device
- ◆ Watch ATSC&QAM TV program and listen to radio on your PC
- ◆ Support up to 1920x1080(HDTV)
- ◆ Dolby Digital AC3 Audio Output
- ◆ Auto & manually scan all available channels
- ◆ Support Time-Shift and scheduled recording function
- ◆ Support EPG (Electronic Program Guide)/Subtitle/Teletext
- ◆ Capture images in JPEG format
- ◆ With Infrared Remote Control

1.2 Product Specification

- ◆ Support Windows2000 SP4 / XP SP2 / Vista
- ◆ Window / full-screen show
- ◆ Support 8-VSB & QAM demodulation (ATSC)
- ◆ Support overlay show
- ◆ Support video-background function

USB2.0 ATSC TV STICK

USER'S MANUAL

Part 2 System Requirements

Basic allocation	Recommended allocation
CPU P4 1.7G	P4 2.0G or higher
RAM 128M	RAM 256M or higher
VGA Card 32M Memory	VGA Card, 64Memory or higher
Win2000 SP4	Windows XP SP2/Vista
Directx9.0	Directx9.0C

Part 3 Product list

◆USB2.0 TV Stick	1 piece
◆Antenna Cable	1 piece
◆Remote Controller	1 piece
◆User's Manual	1 piece
◆Driver & Application CD	1 piece

USB2.0 ATSC TV STICK USER'S MANUAL

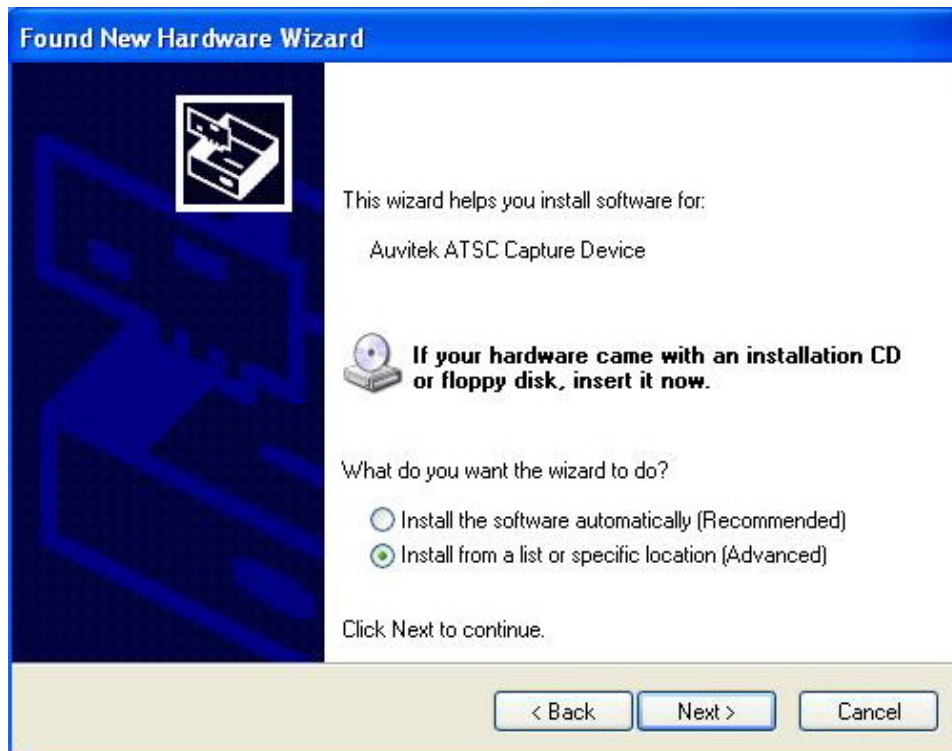
Part 4 Driver installation

- Before the Driver installed, please insert the CD into CD-ROM and connect the USB TV Stick to your PC. When the following window appears, please choose “No, not this time” and click “Next”:

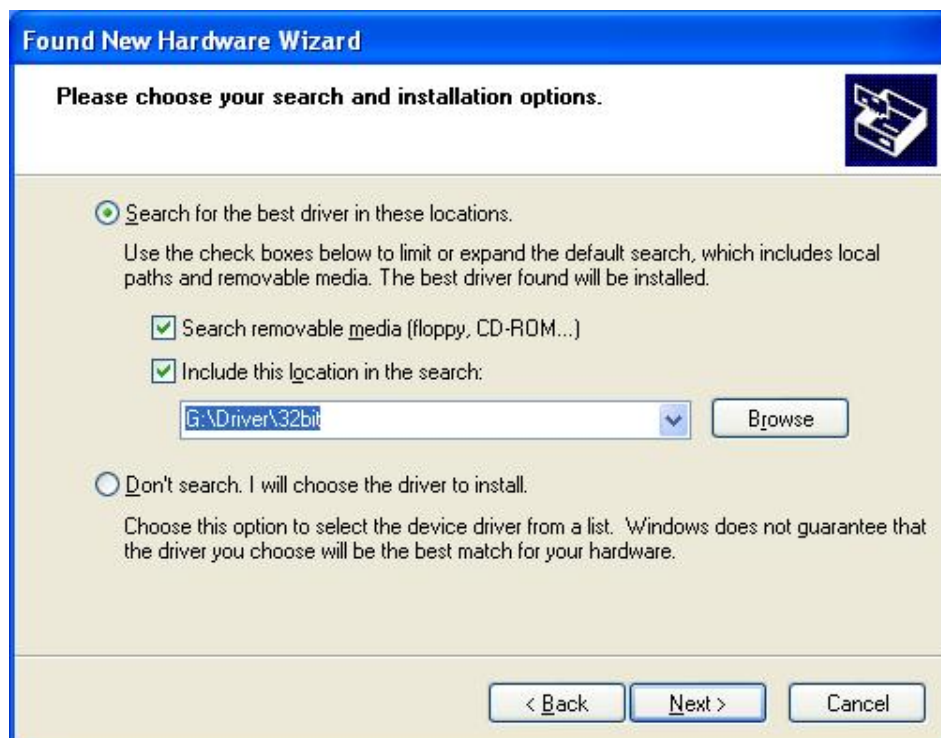


- When the following window appears, please choose the second option and click “Next”

USB2.0 ATSC TV STICK USER'S MANUAL



- Then choose the path of driver in CD, and click “Next”:



USB2.0 ATSC TV STICK USER'S MANUAL

- Window will prompt the flowing dialogue box, please click “Continue Anyway”:



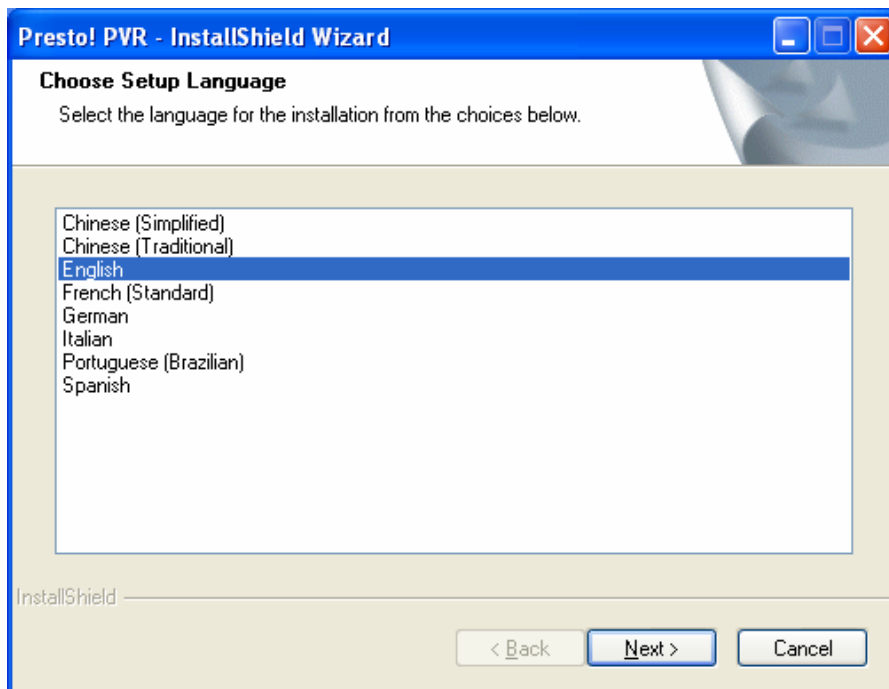
- Please click “Finish”:



USB2.0 ATSC TV STICK USER'S MANUAL

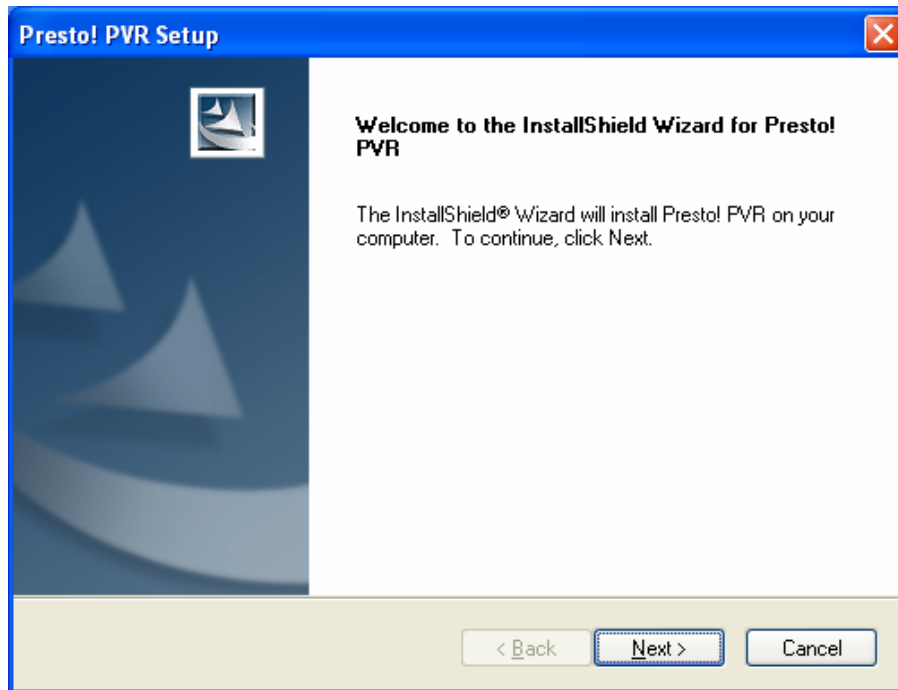
Part 5 Application installation

- Click “Setup.exe” file under the Application list in the CD, when the following window appears, select the language and click “Next”:

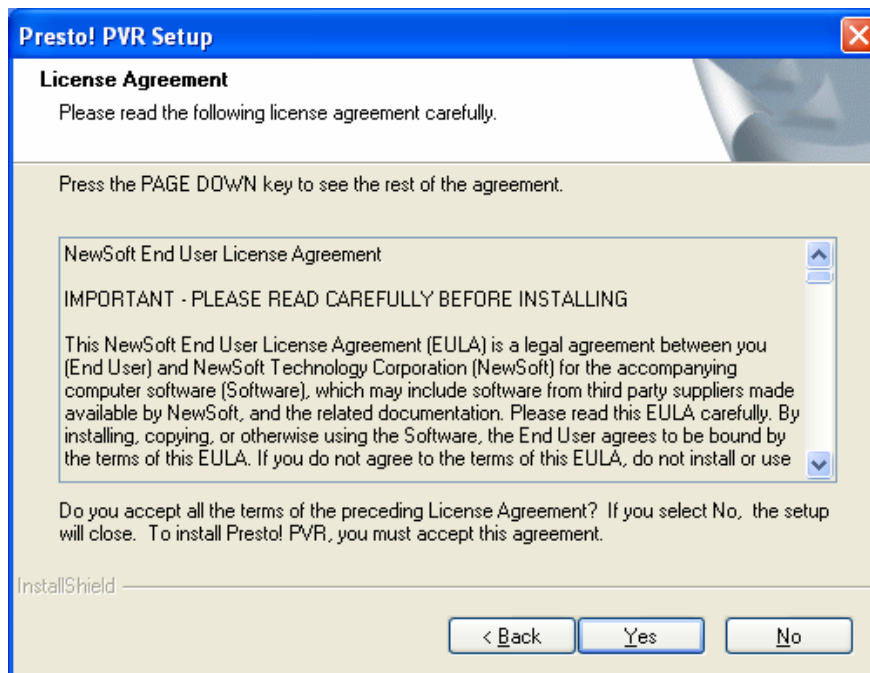


USB2.0 ATSC TV STICK USER'S MANUAL

- When the following window appears, please click “Next”:

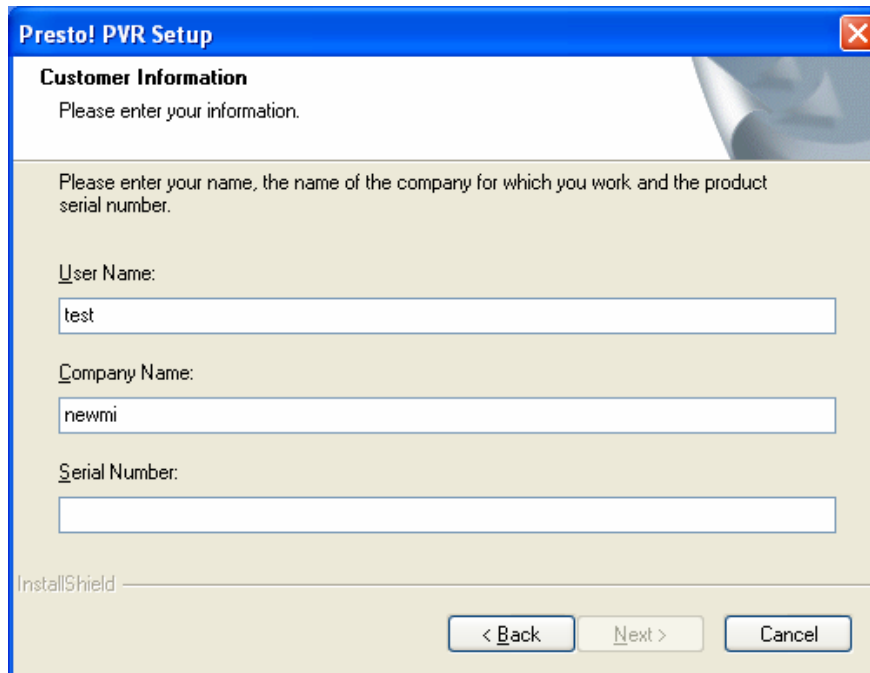


- Please click “Yes”:



USB2.0 ATSC TV STICK USER'S MANUAL

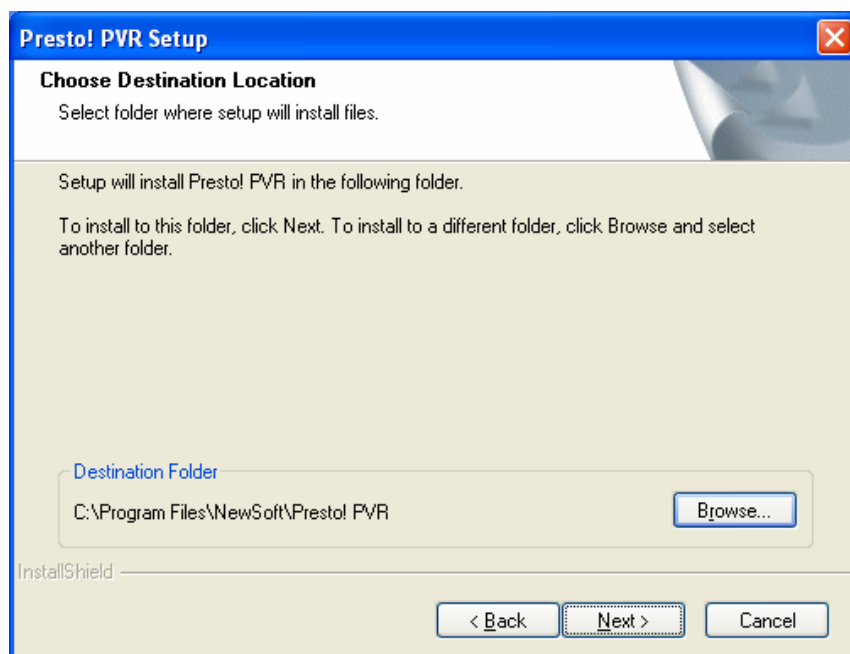
- Enter Serial Number and click “Next”:



The screenshot shows the 'Presto! PVR Setup' window with the 'Customer Information' tab selected. The window has a blue title bar and a standard Windows XP-style border. The main area is light beige. It contains the following elements:

- Customer Information** (Section Header)
- Please enter your information.
- Please enter your name, the name of the company for which you work and the product serial number.
- User Name:** A text box containing 'test'.
- Company Name:** A text box containing 'newmi'.
- Serial Number:** An empty text box.
- InstallShield logo in the bottom left.
- Navigation buttons at the bottom right: '< Back', 'Next >', and 'Cancel'.

- Choose the path to install (default as system disk C:\Program Files\NewSoft\Presto! PVR), click “Next”:

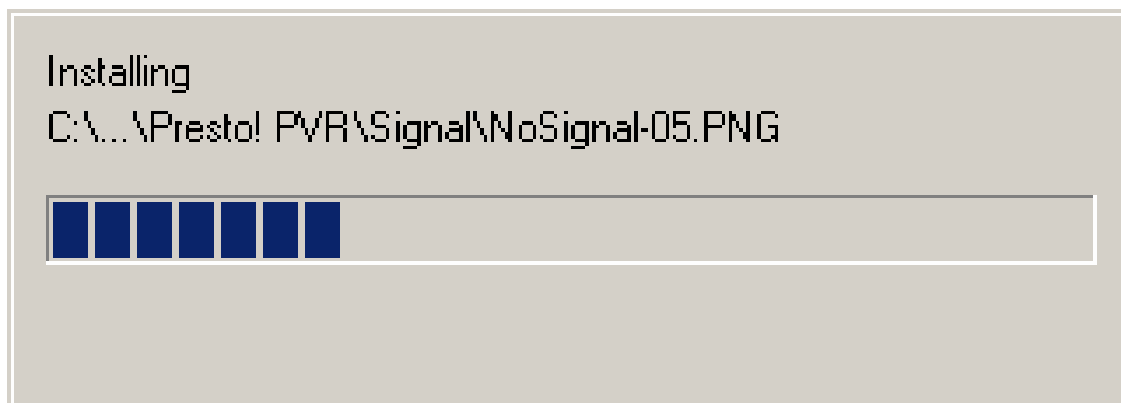
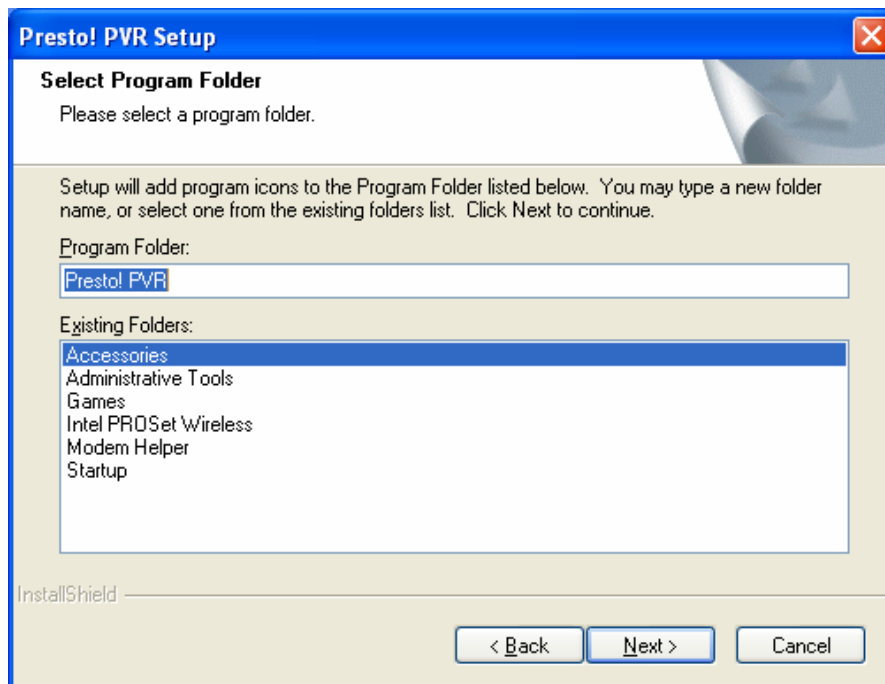


The screenshot shows the 'Presto! PVR Setup' window with the 'Choose Destination Location' tab selected. The window has a blue title bar and a standard Windows XP-style border. The main area is light beige. It contains the following elements:

- Choose Destination Location** (Section Header)
- Select folder where setup will install files.
- Setup will install Presto! PVR in the following folder.
- To install to this folder, click Next. To install to a different folder, click Browse and select another folder.
- Destination Folder:** A text box containing 'C:\Program Files\NewSoft\Presto! PVR'.
- A 'Browse...' button to the right of the text box.
- InstallShield logo in the bottom left.
- Navigation buttons at the bottom right: '< Back', 'Next >', and 'Cancel'.

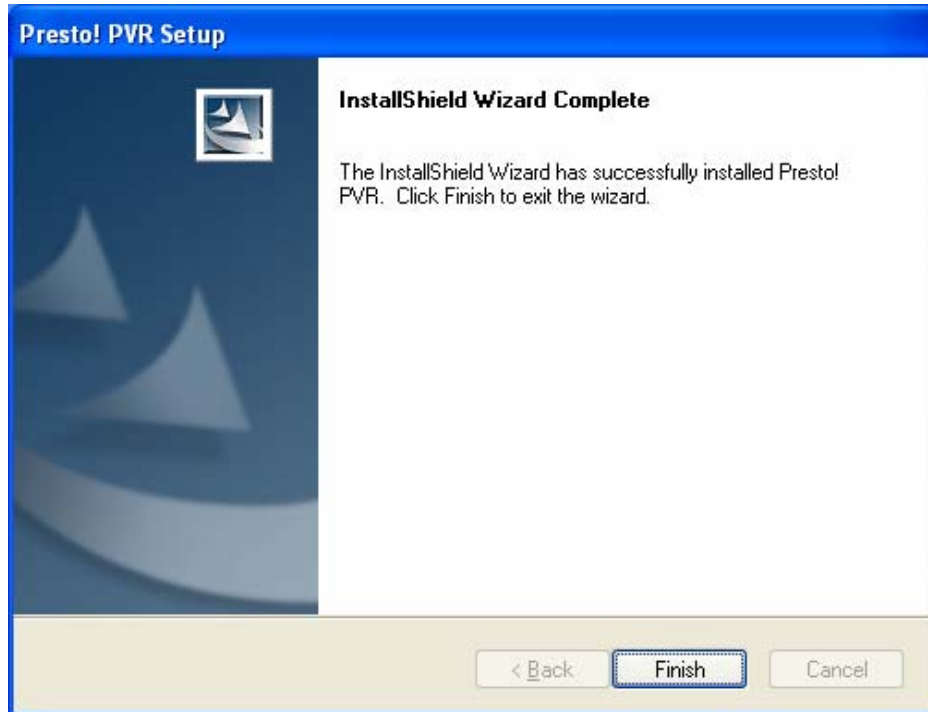
USB2.0 ATSC TV STICK USER'S MANUAL

- Please click “Next”:



USB2.0 ATSC TV STICK USER'S MANUAL

- Click “Finish” button and finish the installation:



FCC WARNING

This device complies with Part 15 of the FCC Rules. Operation is subject to the following two conditions:

- (1) this device may not cause harmful interference, and
- (2) this device must accept any interference received, including interference that may cause undesired operation.

NOTE: This equipment has been tested and found to comply with the limits for a Class B digital device, pursuant to part 15 of the FCC Rules. These limits are designed to provide reasonable protection against harmful interference in a residential installation. This equipment generates, uses and can radiate radio frequency energy and, if not installed and used in accordance with the instructions, may cause harmful interference to radio communications. However, there is no guarantee that interference will not occur in a particular installation. If this equipment does cause harmful interference to radio or television reception, which can be determined by turning the equipment off and on, the user is encouraged to try to correct the interference by one or more of the following measures:

- Reorient or relocate the receiving antenna.
- Increase the separation between the equipment and receiver.
- Connect the equipment into an outlet on a circuit different from that to which the receiver is connected.
- Consult the dealer or an experienced radio/TV technician for help.

NOTE: The manufacturer is not responsible for and radio or TV interference caused by unauthorized modifications to this equipment. Such modifications could void the user's authority to operate the equipment.