

Annex B

1-2201/20-01-02_AnnexB

[Internal photos of the Equipment Under Test](#)

This addendum is electronically signed and valid without handwritten signature.
For verification of the electronic signatures, the public keys can be requested at the testing laboratory.

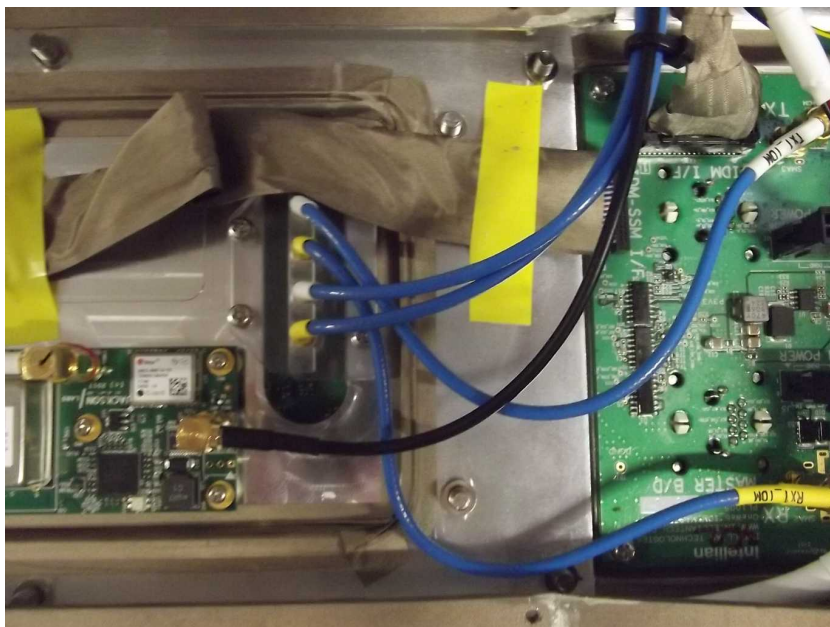
Document authorized:

Thomas Vogler
Lab Manager
Radio Communications & EMC

Photos



MIM, SSM and EGR of primary antenna installed



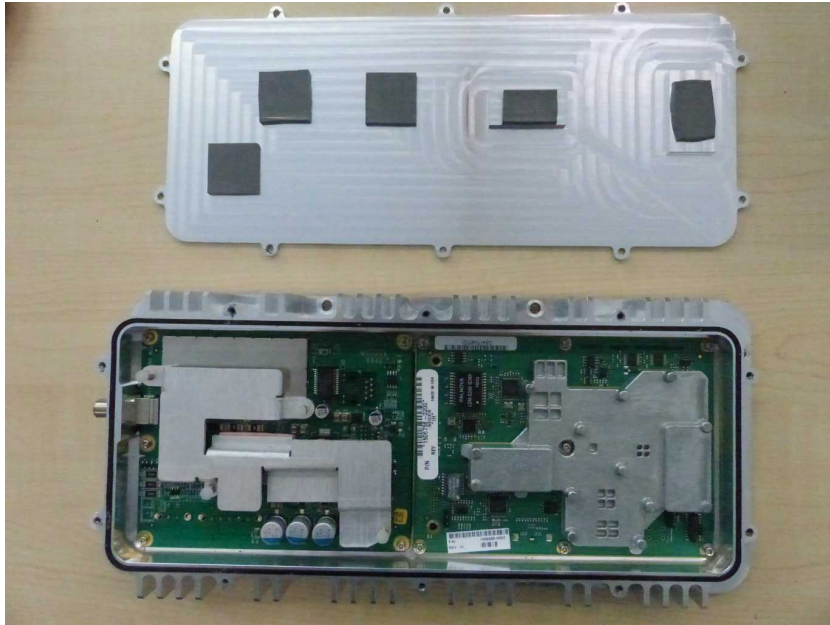
interconnection cables



IDM of primary antenna



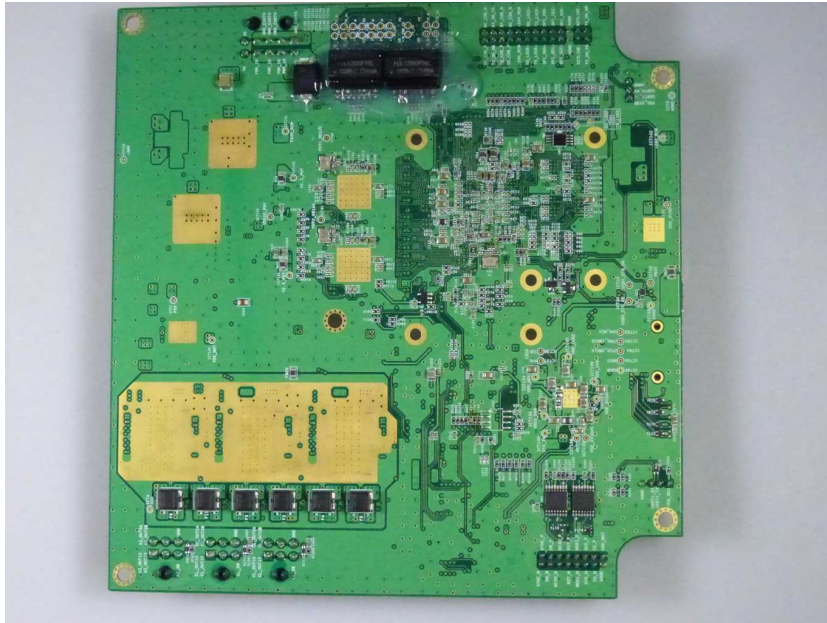
IDM of secondary antenna



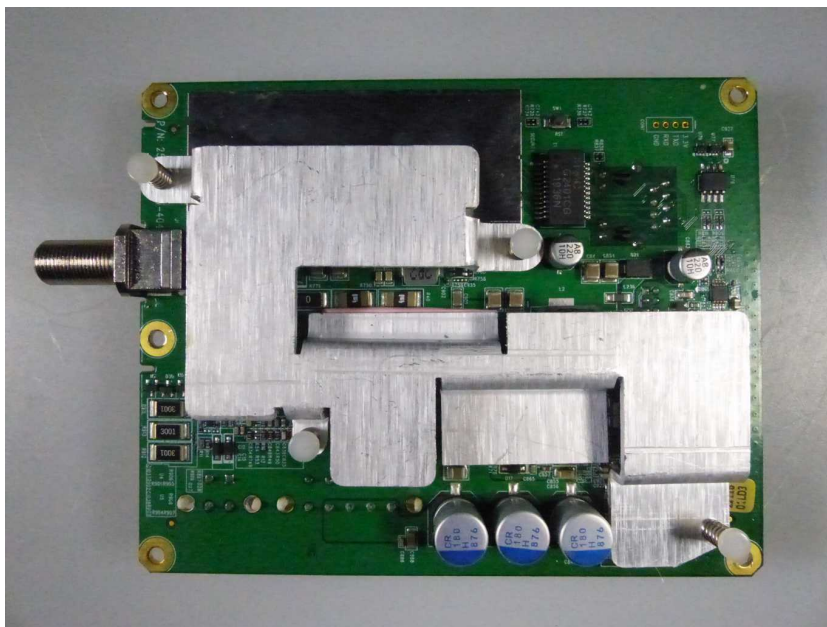
box with MIM and SSM opened



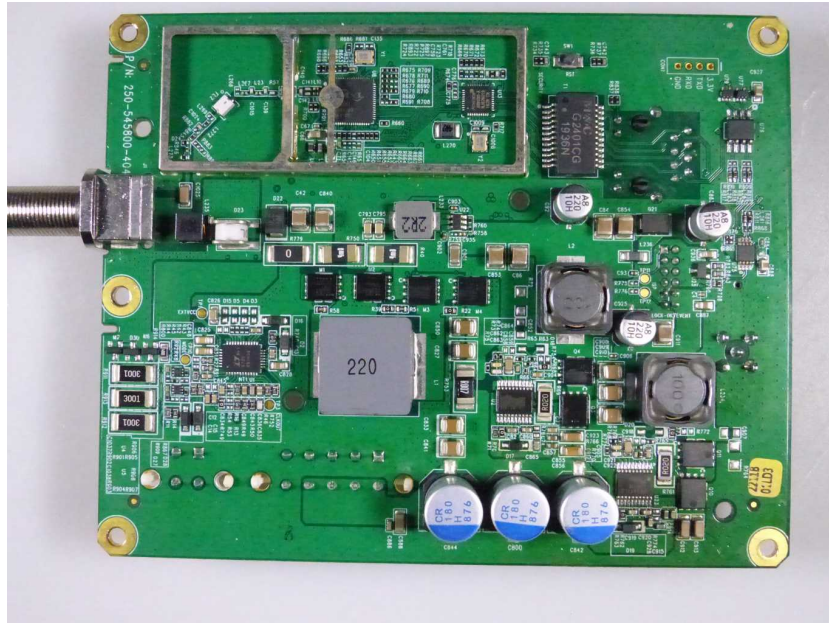
AIM front



AIM rear



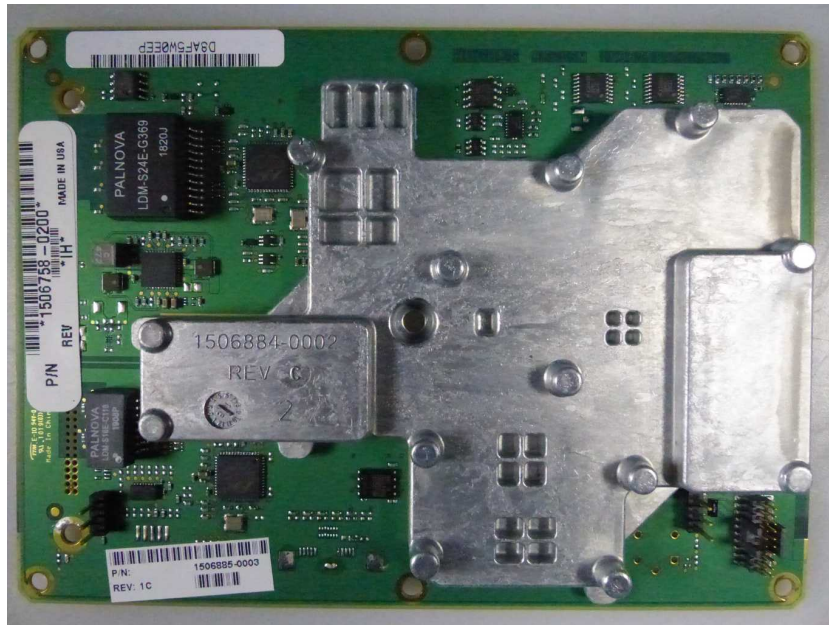
MIM front



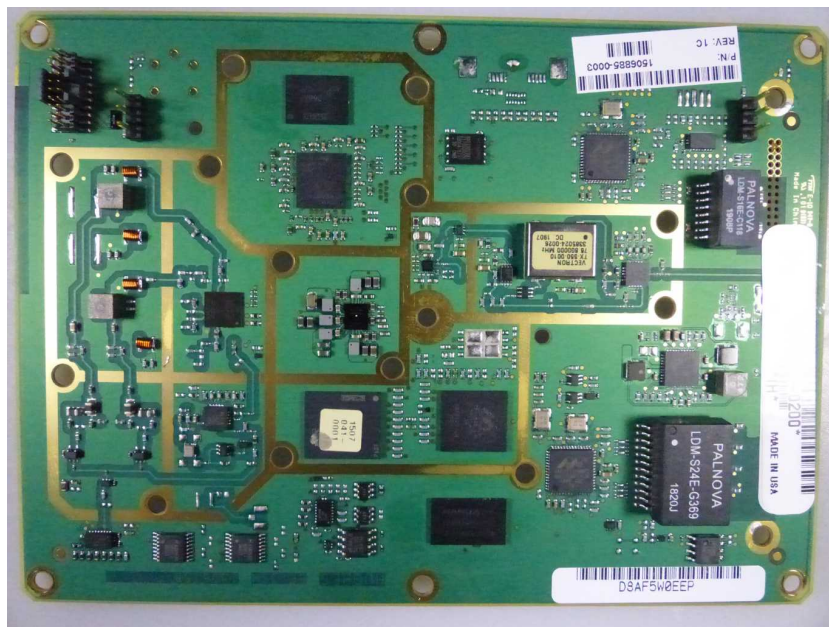
MIM front



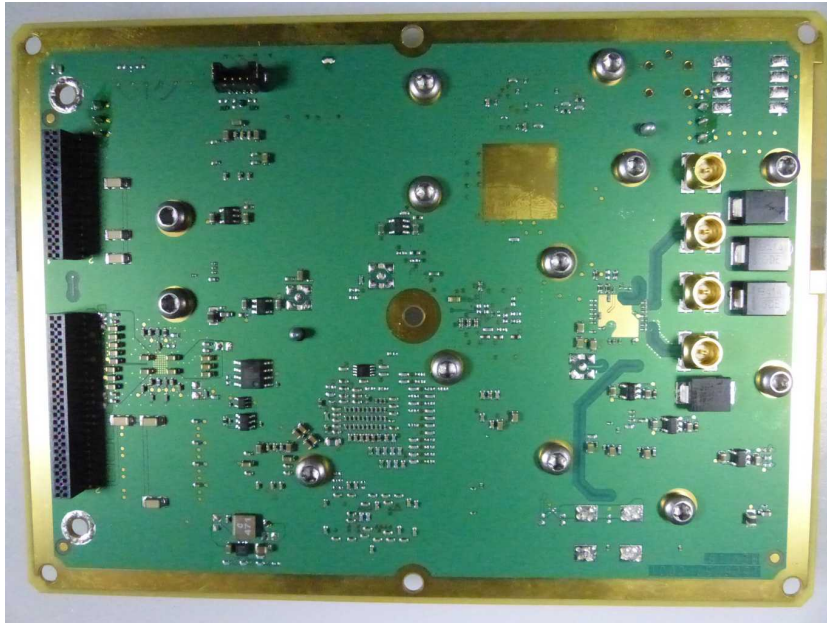
MIM rear



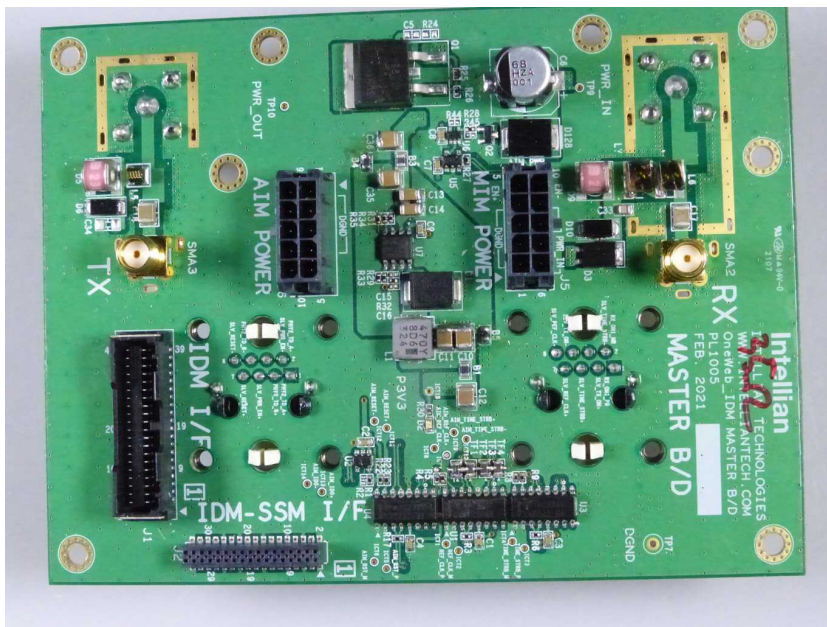
SSM front



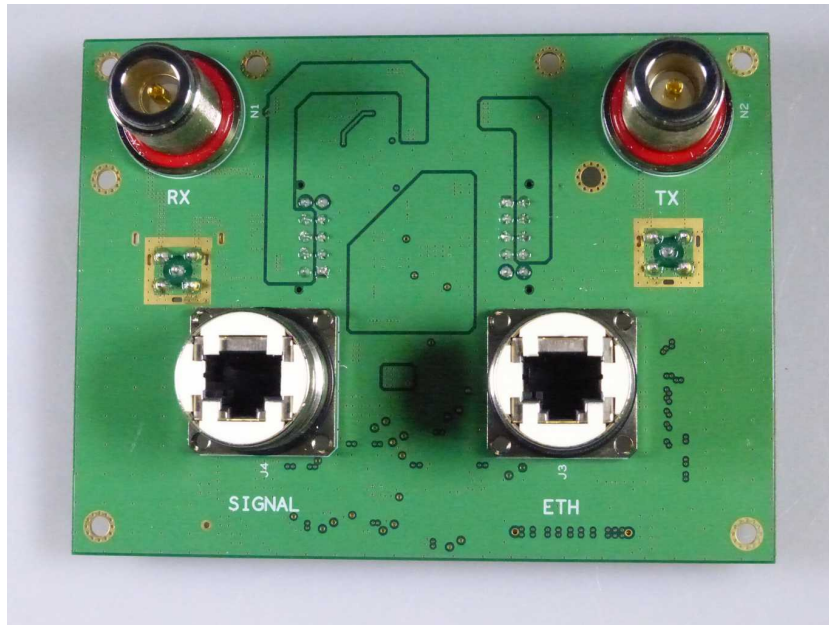
SSM front



SSM rear



IDM of primary antenna (front)



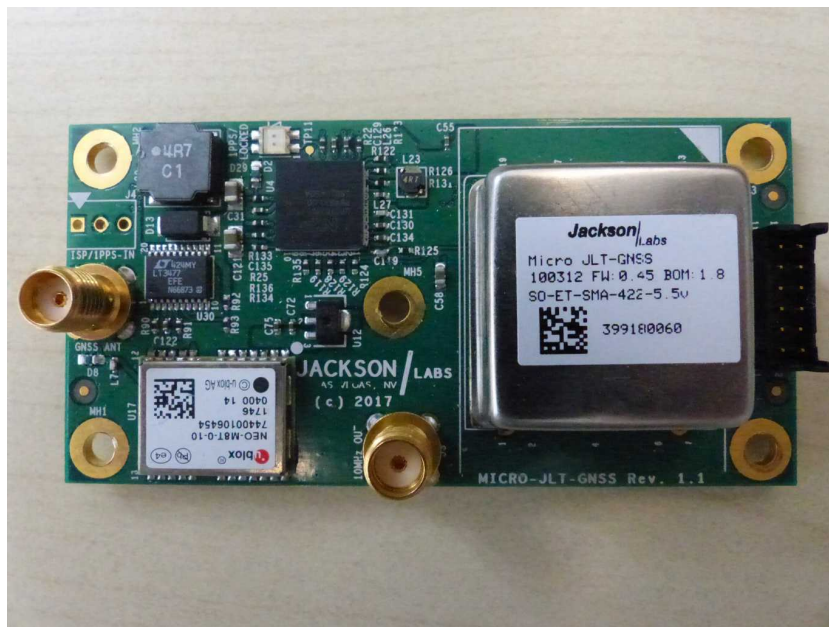
IDM of primary antenna (rear)



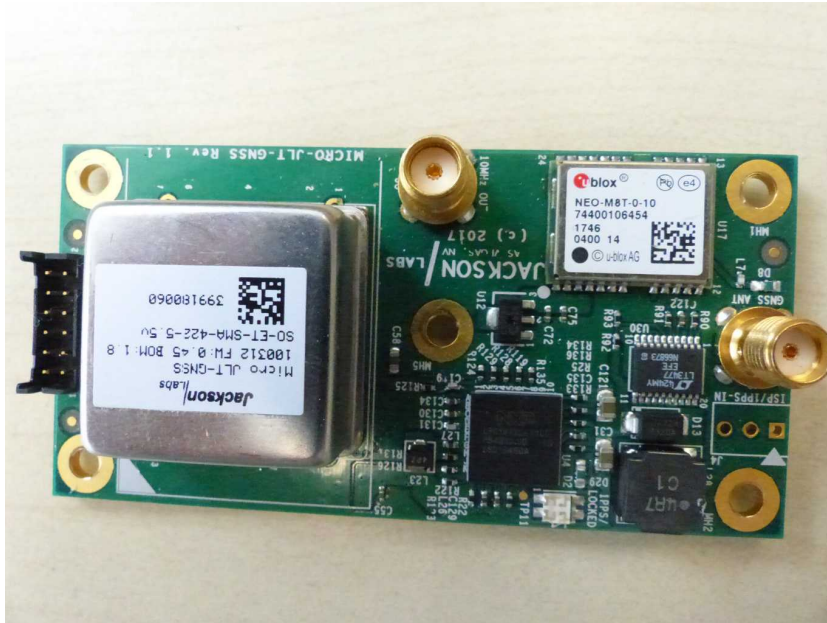
IDM of secondary antenna (front)



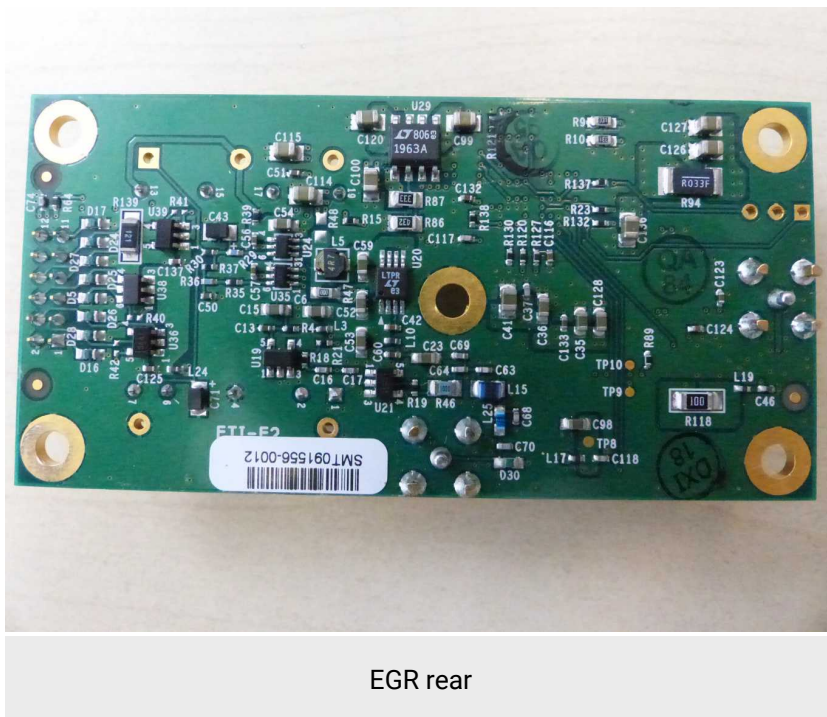
IDM of secondary antenna (rear)



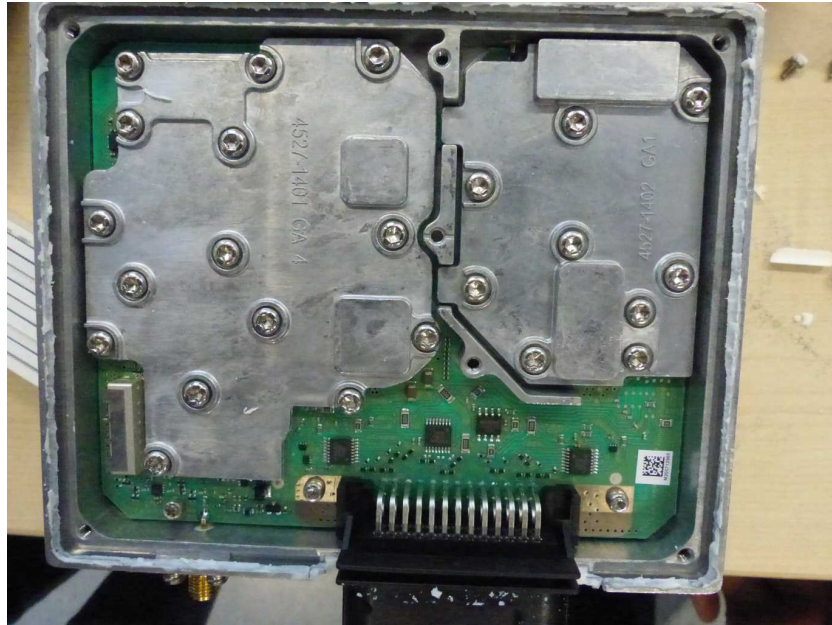
EGR front



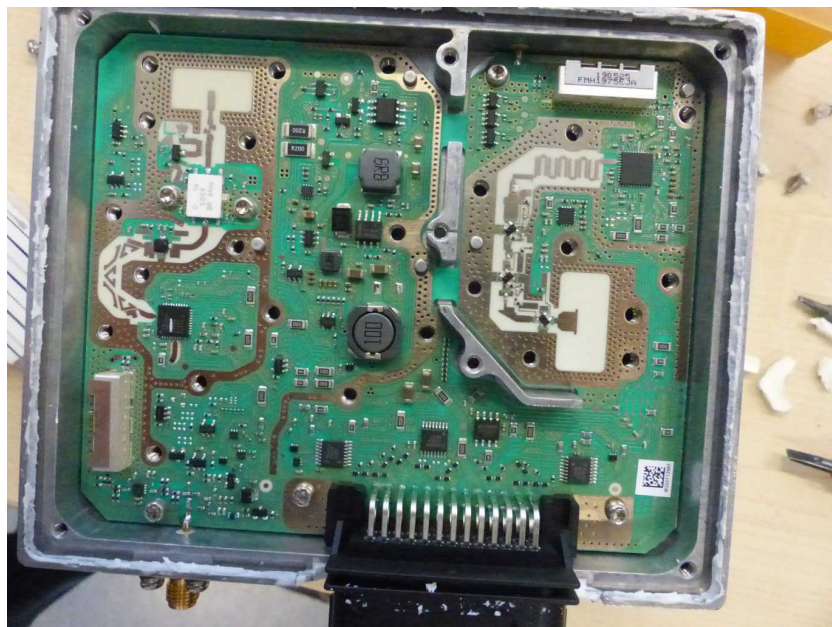
EGR front



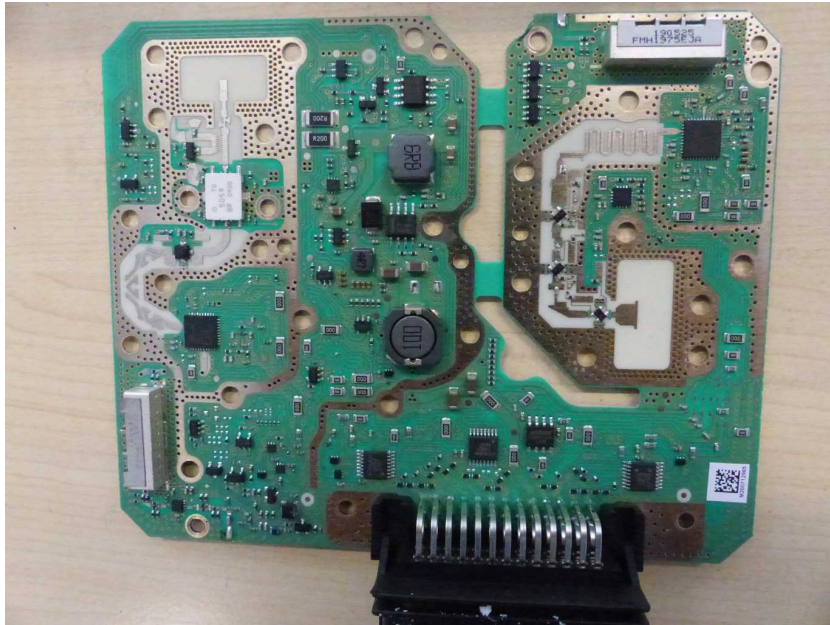
EGR rear



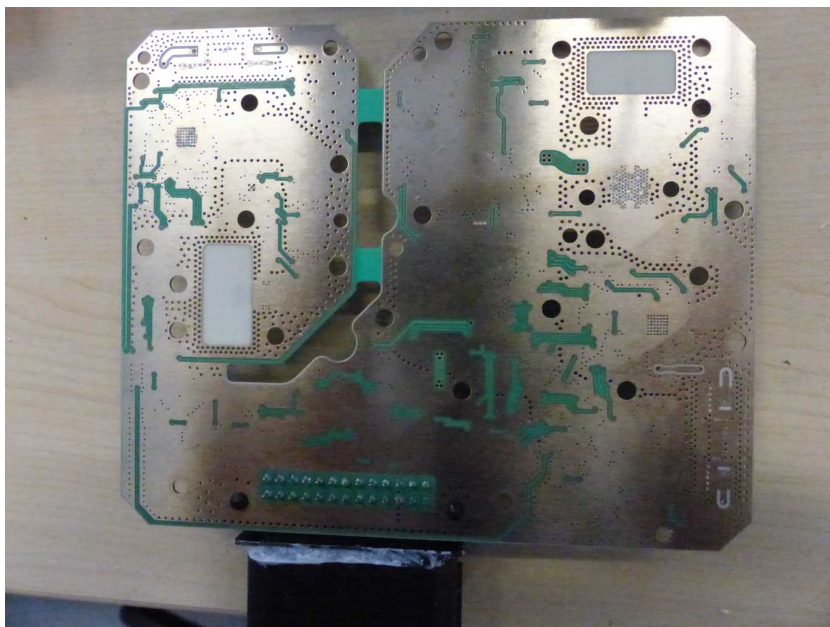
RCM front



RCM front



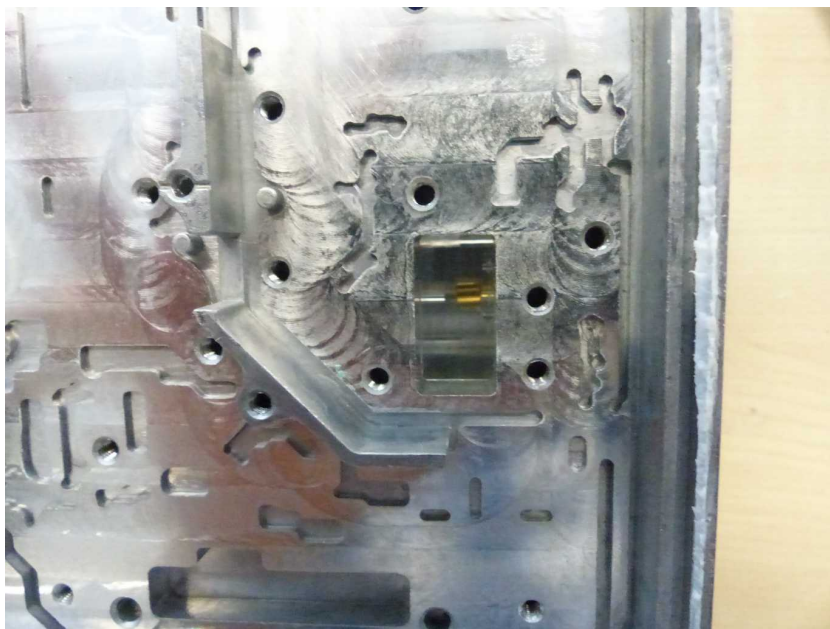
RCM front



RCM rear



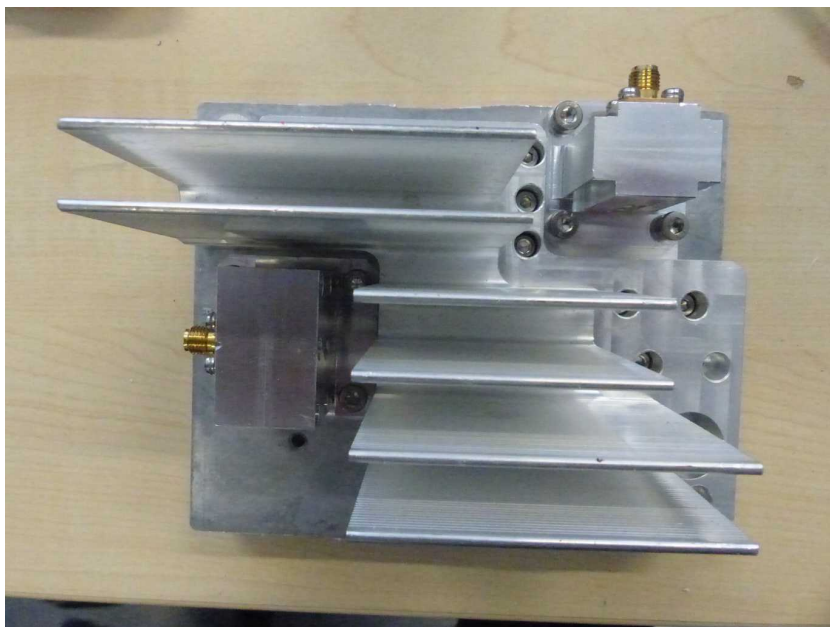
RCM (waveguide flanges without PCB)



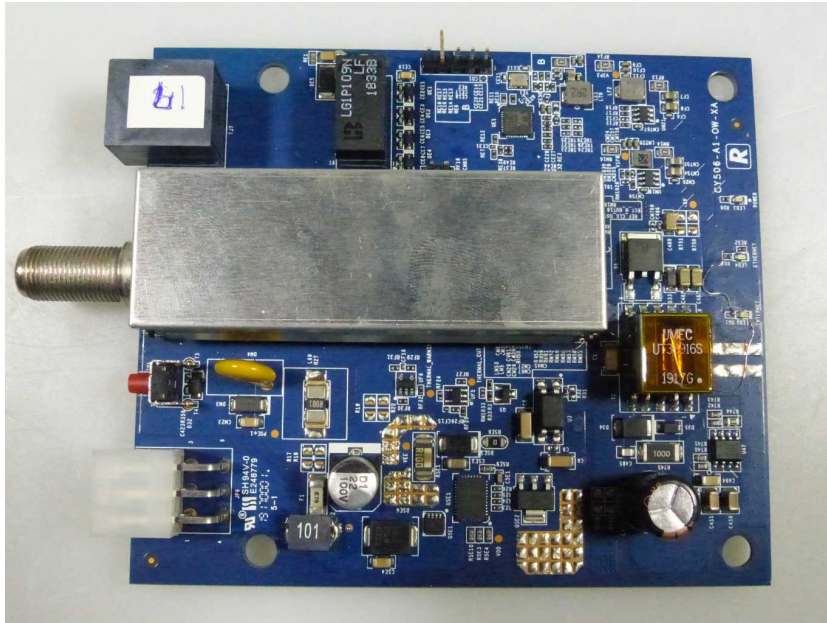
RCM (waveguide flanges without PCB)



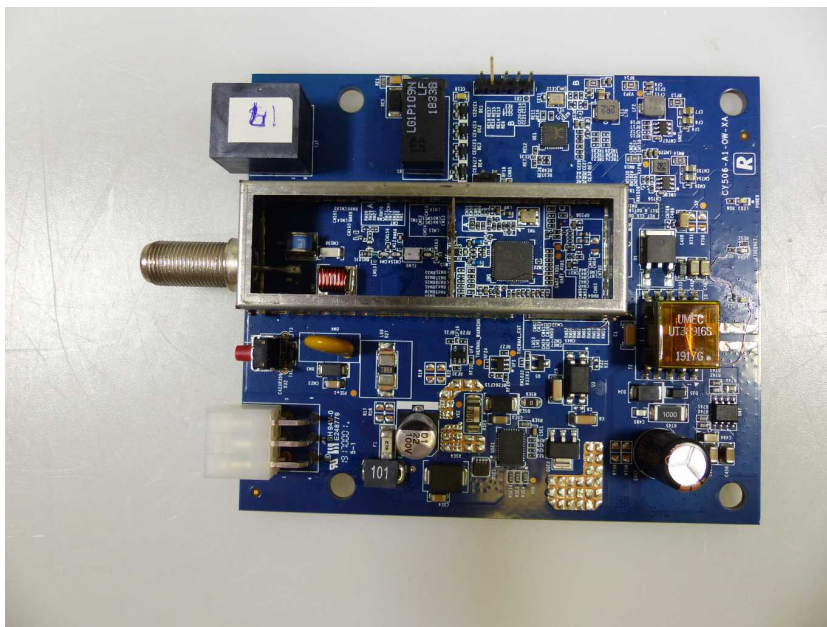
RCM (waveguide flanges without PCB)



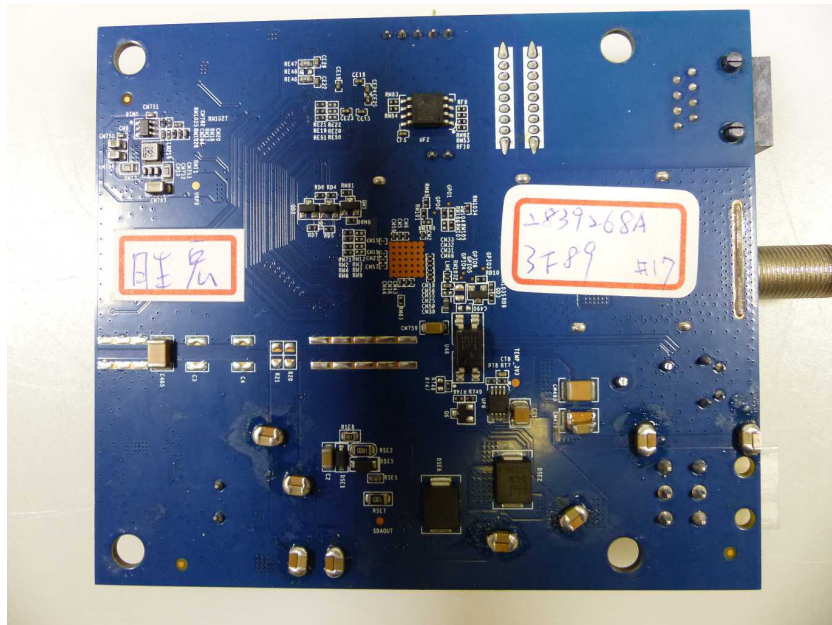
RCM (top view) with waveguide adaptors



CNX_BB (front)



CNX_BB (front)



CNB-BB (rear)



CNX_BB (opened)



CNX_BB

Document history

Version	Applied changes	Date of release
	initial release	2021-07-13

- END OF DOCUMENT -
