

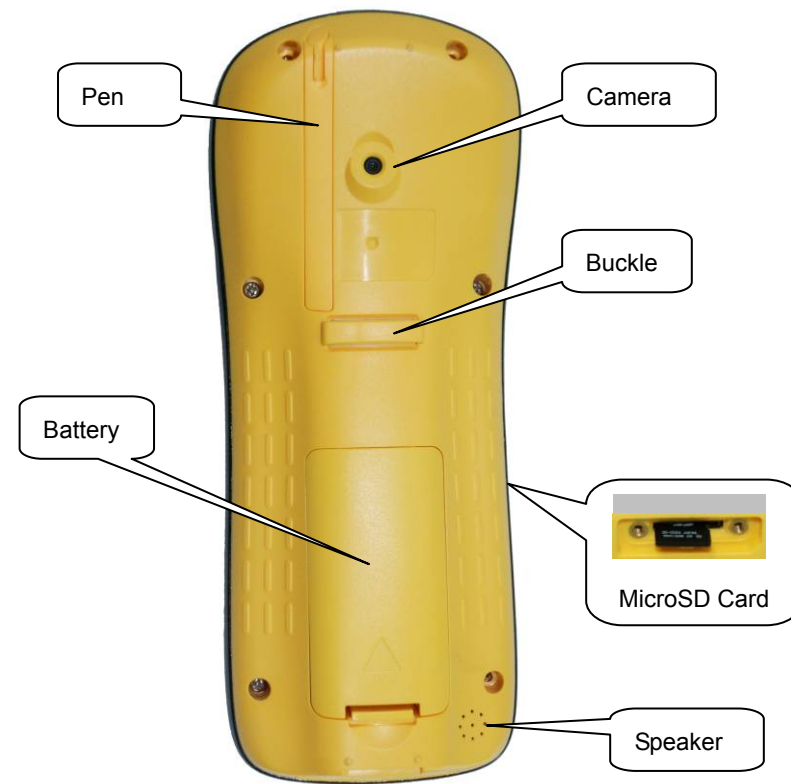
## Catalogue

<b>Chapter 1</b>	<b>Brief Introduction of Q Series GIS Handset.....</b>	<b>0</b>
<b>Chapter 2</b>	<b>Battery Installation and uninstall.....</b>	<b>4</b>
<b>Chapter 3</b>	<b>Pen Installation and Uninstall .....</b>	<b>5</b>
<b>Chapter 4</b>	<b>Turn On Handset.....</b>	<b>6</b>
<b>Chapter 5</b>	<b>How to Transfer Data to Computer.....</b>	<b>7</b>
<b>Chapter 6</b>	<b>How to Install and Uninstall MicroSD Card.....</b>	<b>10</b>
<b>Chapter 7</b>	<b>How to Charge and Battery Operation.....</b>	<b>11</b>

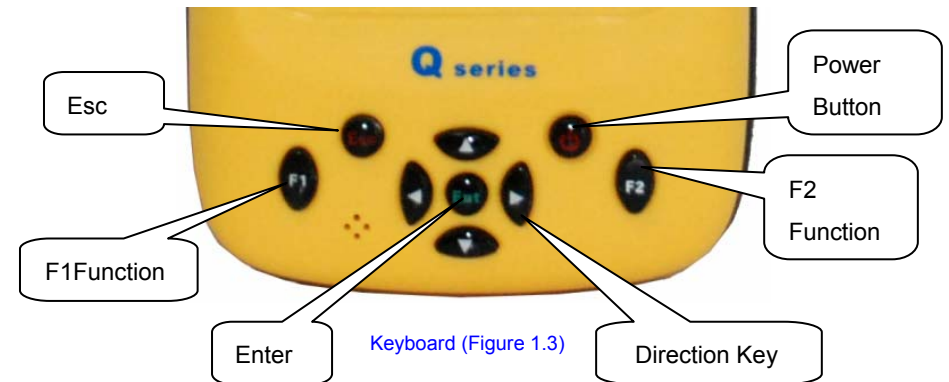
### Chapter 1 Brief Introduction of Q Series GIS Handset



Front Side (Figure 1.1)



Reverse Side (Figure 1.2)




F1: Function Key

F2: Function Key

Esc: Cancel operation on current interface

Ent: Enter button

Direction Key: Change icon you will press on the screen

 : Power Button/back lighting control

(Caution: Press Power Button for more than 2 seconds to turn off system. Quick press for less than 1 second on the Power Button to turn on/off back lighting. When you do need back light, turn it off can save battery live)

## Chapter 2 Battery Installation and uninstall

1. Uninstall: Follow triangle instruction on the battery, light press on spring piece and draw out battery.
2. Installation: put one end of battery which do not have spring piece into battery slot. And press the other side to lock spring piece.



Uninstall (Figure 2.1)



Installation (Figure2.2)

### Chapter 3 Pen Installation and Uninstall



1. Find the pen on reverse side of handset. Draw the pen by Plastic Piece to gain the pen.
2. Press pen into slot and keep plastic piece on gap.

**Caution: Light press and draw when install and uninstall pen**

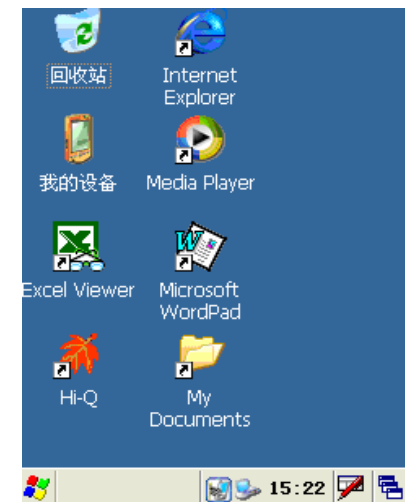


Figure 3.1

## Chapter 4 Turn On Handset

1. Press “

BIOS (Figure 4.1)



WinCE System Desk (Figure 4.2)

## **Chapter 5 How to Transfer Data to Computer**

### **1. Install Microsoft ActiveSync**

Please find this software from CDs in the package. Double click MSASYNC45.exe and install software following instruction. After successful installation, find the software on your Windows 'Start' → 'All Program' → 'Microsoft ActiveSync'. Tick 'Allow USB connections' under 'Connection Setting' of this software. As Figure 5.1 show.

### **2. Hardware Connection**

Turn on Q series GIS data collector and enter WinCE system. Use data cable to connect port of handset, and connect to PC by USB end. As Figure 5.2 shows.

### **3. Software Connection**

Finish cable connection, Microsoft ActiveSync will inform you its running, and ask you if you want to start the connection, click 'OK' to successfully connect. If you connect the GIS for the first time, PC will inform you to install driver for GIS, just follow PC instruction to install WinCE driver. Please find the driver file in CD "GIS Handset Driver".

### **4. Download Data**

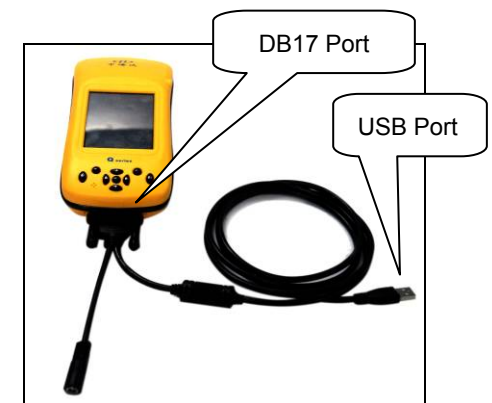
Click Microsoft ActiveSync 'Explore' button to enter 'Mobile Device' of GIS. As Figure 5.3 shows. You can enter 'NandFlash' to copy data you need to the PC.



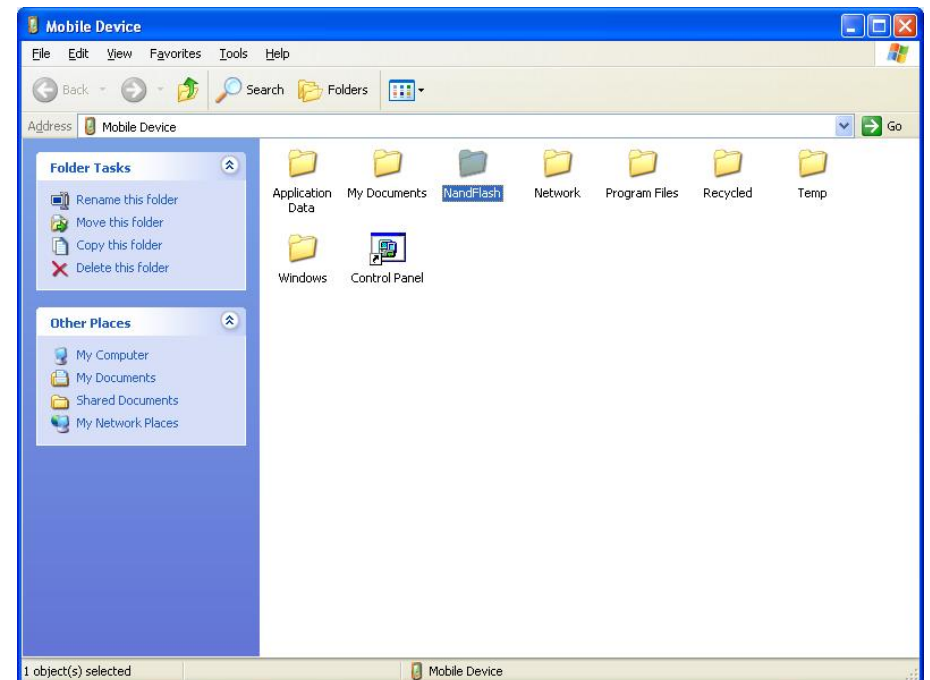
(Caution: Please save data collected in 'NandFlash' or MicroSD card, or data will be deleted if you reboot the handset)



USB Connection Setting (Figure 5.1)



Cable Picture (Figure 5.2)



WinCE 'NandFlash' (Figure 5.3)

## Chapter 6 How to Install and Uninstall MicroSD Card

1. Please open the cover on the left side of handset. It's the card slot for MicroSD card.
2. Install MicroSD into this slot. (Show front side of card upwards and metal side downwards)



Figure 6.1

MicroSD Card

3. If you need to uninstall MicroSD card, light press the card into slot, the card will be pop-up part of it. Then draw the card out of slot.

(Caution: MicroSD card (TF card) is small external flash storage card, usually used in cell phone and PDA, please distinguish it from common SD card when you purchase one for GIS. Common SD card has larger size compare with MicroSD, it would be not feasible to use on Q GIS handset. Q GIS now can support MicroSD card storage from 32MB to 32GB)

## Chapter 7 How to Charge and Battery Operation

Please charge the battery using the charger we supply under operational temperature, and assure certain charge time.

Detail requirement: Use Cable Charger to charge battery; Charge under 10C to 40C operational degree; Make sure you already use up the battery; Need to charge battery for 12 hours at the first three times, then you can charge for 4 hours; If the battery is not usually used, need to be charged once per month.



Figure 8.1

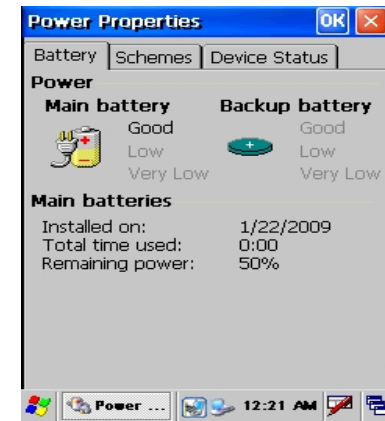



Figure 8.2

When you are charging the battery, you can click 'Start' → 'Settings' → 'Control Panel' → 'Power' to check current battery. If remaining power is 100% and it's showing 'Charging', and mission bar of WinCE system

there are still icon showing:  (A flash beside battery) please

keep on charging. Until the icon shows  with out a flash symbol, the charging is finish.

(Caution: Charging is very important for battery life, please complete the entire charging follow our instruction to assure your work hours)

## **FCC WARNING**

This device complies with Part 15 of the FCC Rules. Operation is subject to the following two conditions:

- (1) this device may not cause harmful interference, and
- (2) this device must accept any interference received, including interference that may cause undesired operation.

This device must be installed to provide a separation distance of at least 2.5 cm from all persons and must not be collocated or operating in conjunction with any other antenna or transmitter.

NOTE 1: This equipment has been tested and found to comply with the limits for a Class B digital device, pursuant to part 15 of the FCC Rules. These limits are designed to provide reasonable protection against harmful interference in a residential installation. This equipment generates, uses and can radiate radio frequency energy and, if not installed and used in accordance with the instructions, may cause harmful interference to radio communications. However, there is no guarantee that interference will not occur in a particular installation. If this equipment does cause harmful interference to radio or television reception, which can be determined by turning the equipment off and on, the user is encouraged to try to correct the interference by one or more of the following measures:

- Reorient or relocate the receiving antenna.
- Increase the separation between the equipment and receiver.
- Connect the equipment into an outlet on a circuit different from that to which the receiver is connected.
- Consult the dealer or an experienced radio/TV technician for help.

NOTE: The manufacturer is not responsible for and radio or TV interference caused by unauthorized modifications to this equipment. Such modifications could void the user's authority to operate the equipment.