

Internal Photographs

SC2021 Hand-portable radio

Applicable to SC2021 Variant with BT/Wi-Fi

FCC: XX6SC2021M

IC: 8739A-SC2021M HVIN: 1-1V10-0-03-12

Original Instructions: ENGLISH
Document Number: CON-REP-00332
Issue: 6
Date of Issue: 21/11/2024

Copyright

© Sepura Limited. 2002– 2024 All rights reserved.

No part of the information contained herein and the other referred documents may be copied, distributed or transmitted by any means to any other party without prior written permission of Sepura Limited. The distribution of this document may require a Non-Disclosure Agreement (NDA) between Sepura Limited. and their agents or customers. This document, the referred documents and the described product are considered protected by copyright according to the applicable laws.

Disclaimer

Although every reasonable effort has been made to ensure the accuracy of the information contained herein and any other referred document, this should not be construed as a commitment on the part of Sepura Limited. and the liability of Sepura Limited. for any errors and omissions shall be limited to the correction of such errors and omissions. Sepura Limited. welcomes any comment and feedback as a way to improve any delivered documentation. The information contained herein has been prepared for the use of appropriately trained personnel, and it is intended for the purpose of the agreement under which the information is submitted. Any party using or relying upon this information assumes full responsibility for such use and in no event shall Sepura Limited. be liable to anyone for especial, collateral, incidental, or consequential damages in connection with or arising out of the use of this information. The information or statements given in these documents regarding the suitability, capacity or performance of the mentioned hardware or software products cannot be considered binding but shall be defined in the agreement made between Sepura Limited. and the customer.

Trademarks

The Sepura logo and some product branding logos and names are registered trademarks of Sepura Limited. All other trademarks appearing in this document are the property of their respective owners.

Contact Details

Sepura Limited.
9000 Cambridge Research Park
Beach Drive, Waterbeach
Cambridge, CB25 9TL
United Kingdom
www.seapura.com

Contents

1. Document History	4
2. Scope	5
3. Photographs	6

Figures

Figure 1. SC2021 Front with Keypad Removed	6
Figure 2. SC2021 Front with Keypad Removed showing the backs of the keypad and bezel	7
Figure 3. SC2021 with Bluetooth/Wi-Fi Module Fitted.....	8
Figure 4. SC2021 with Bluetooth/Wi-Fi Module Removed	8
Figure 5. SC2021 Rear Cover	9
Figure 6. SC2021 Main PCB Top View	9
Figure 7. SC2021 Main PCB Bottom View	10
Figure 8. SC2021 Main PCB Top View with Cans Removed	10
Figure 9. SC2021 Main PCB Bottom View with Cans Removed	11
Figure 10. SC2021 LCD Side	11
Figure 11. SC2021 LCD Side Rear View.....	12
Figure 12. SC2021 LCD Side Front View	12
Figure 13. SC2021 Front Cover.....	13
Figure 14. SC2021 Front Cover with Speaker Removed	13
Figure 15. SC2021 Bluetooth/Wi-Fi Module	14
Figure 16. SC2021 Bluetooth/Wi-Fi Module with Can Removed.....	14

1. Document History

Table 1. Document History

Issue	Notes
1	First Release.
2	Red and yellow borders added to indicate location of TETRA, Bluetooth, Wi-Fi and GNSS areas.
3	Added Figure 1. Separated off non-BT/Wi-Fi variant into separate document CON-REP-00378. Added scope section and HVIN added as 1-1V10-0-12.
4	Updated figures 1 and 2 to show grey bezel specific to SC2021.
5	C2 model. Updated document template. Main PCB updated to PCB-0218 Rev 3. Added indication of location of GNSS antenna.
6	D model. Main PCB updated to PCB-0283 Rev 1. HVIN changed to 1-1V10-0-03-12.

2. Scope

SC2021 with BT/Wi-Fi feature.

This variant of the SC2021 has the following IDs:

FCC: XX6SC2021M

IC: 8739A-SC2021M HVIN: 1-1V10-0-03-12

3. Photographs

Figure 1. SC2021 Front with Keypad Removed



Figure 2.

SC2021 Front with Keypad Removed showing the backs of the keypad and bezel



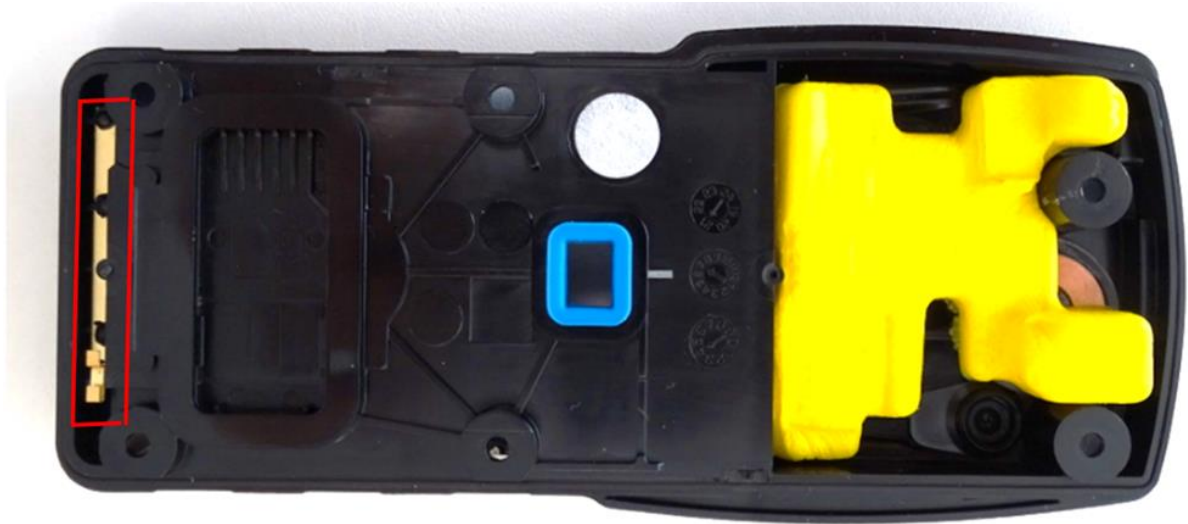
Figure 3. SC2021 with Bluetooth/Wi-Fi Module Fitted



Figure 4. SC2021 with Bluetooth/Wi-Fi Module Removed



Figure 5. SC2021 Rear Cover



Area enclosed in red box shows the GNSS Antenna.

Figure 6. SC2021 Main PCB Top View

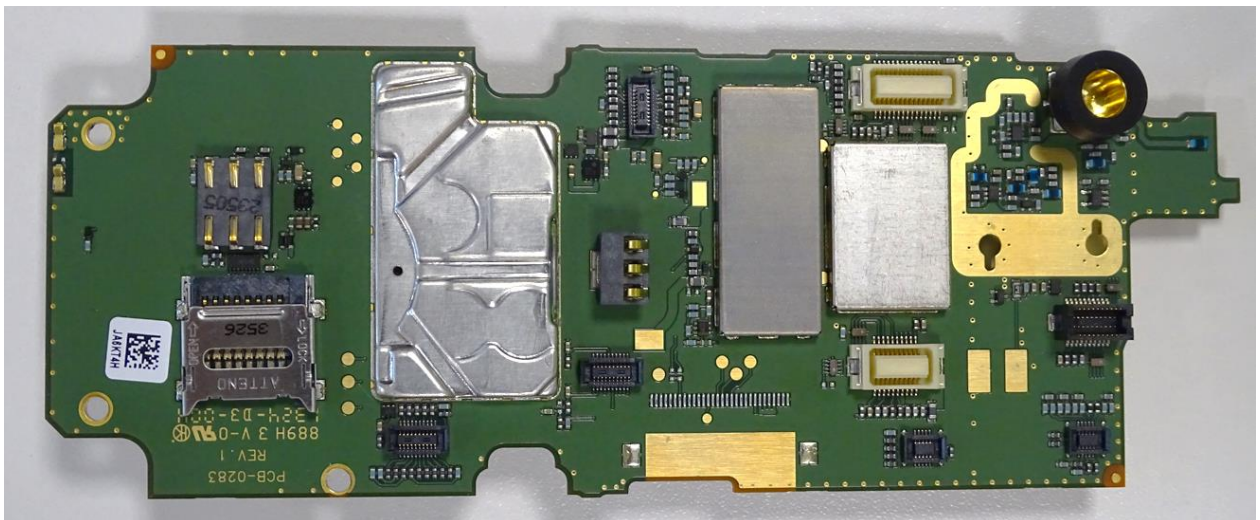
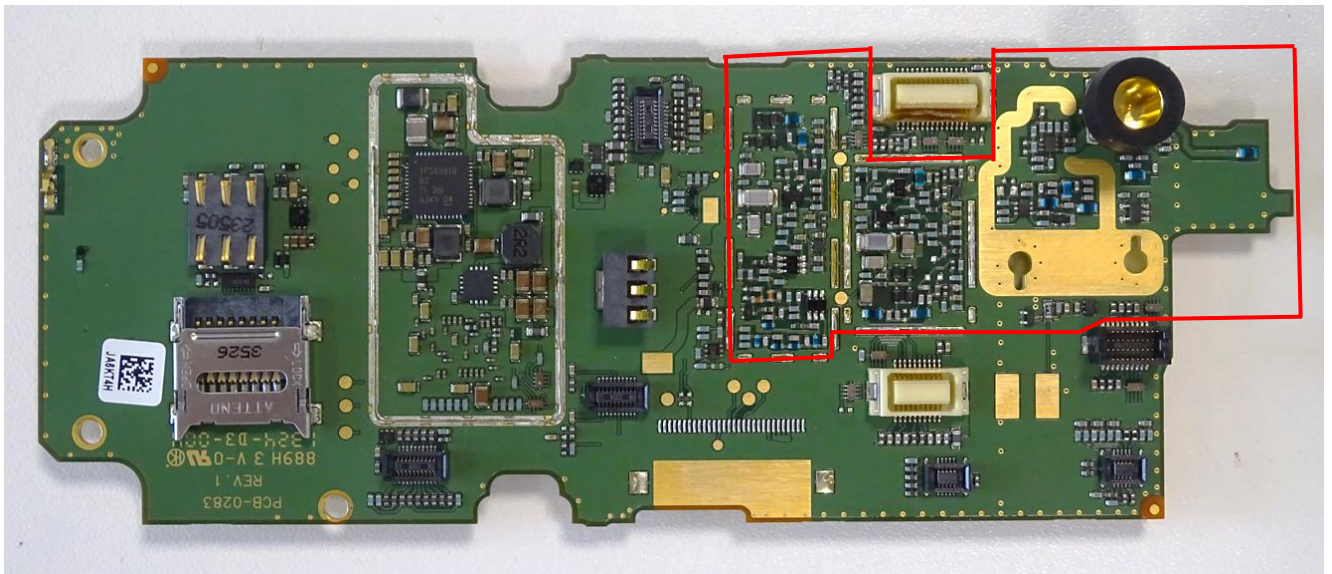


Figure 7. SC2021 Main PCB Bottom View

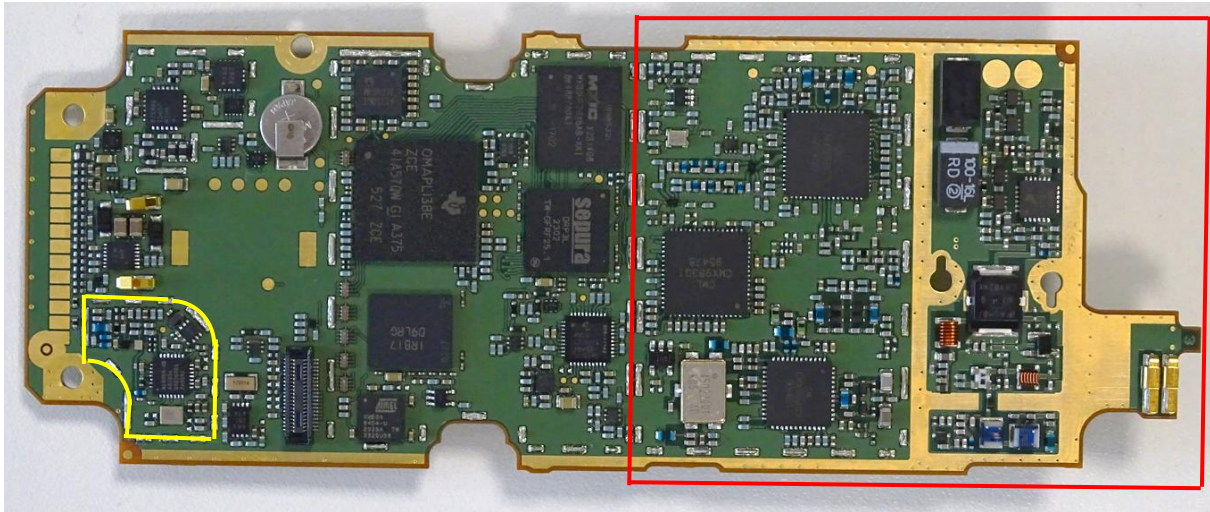


Figure 8. SC2021 Main PCB Top View with Cans Removed



Area enclosed in red box relates to TETRA.

Figure 9. SC2021 Main PCB Bottom View with Cans Removed



Area enclosed in red box relates to TETRA.

Area enclosed in yellow box relates to GNSS.

Figure 10. SC2021 LCD Side

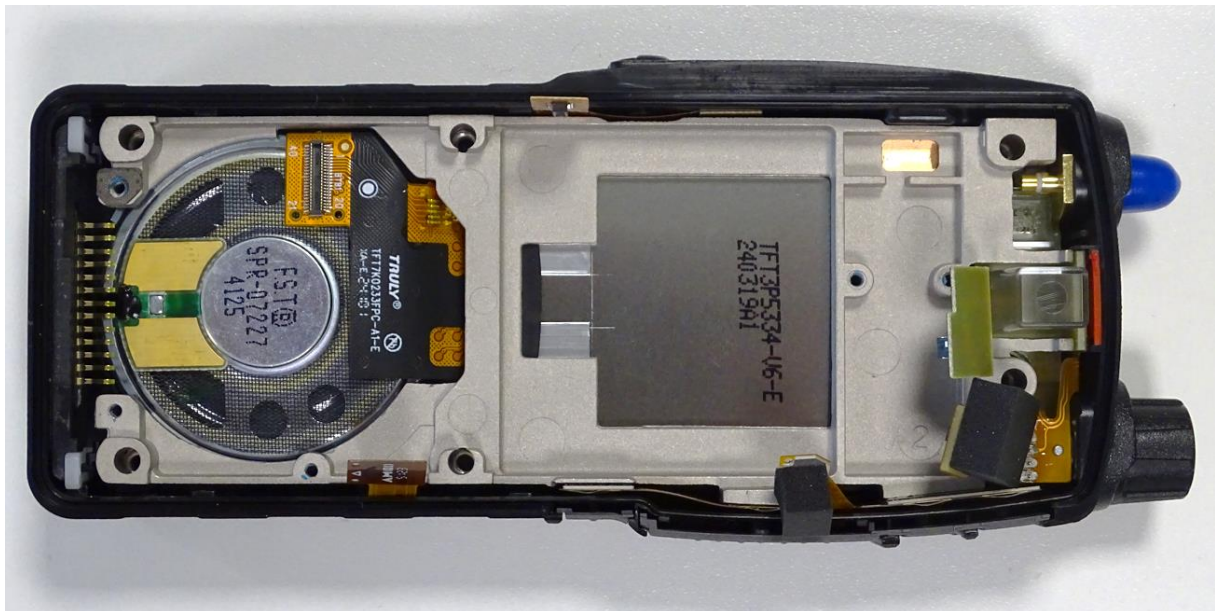


Figure 11. SC2021 LCD Side Rear View

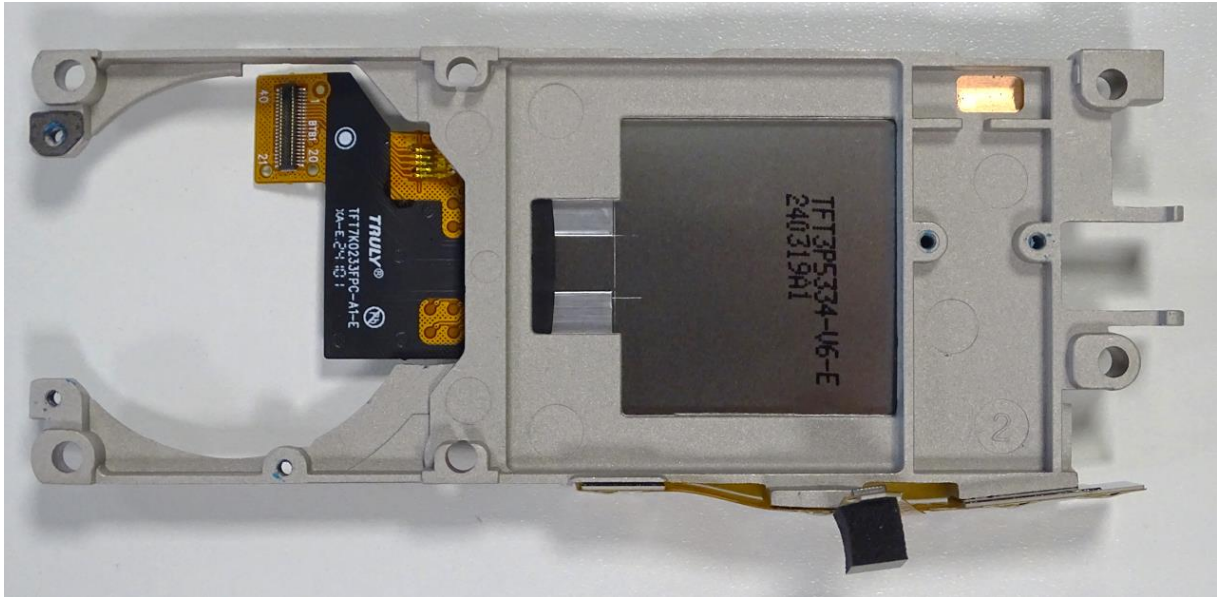


Figure 12. SC2021 LCD Side Front View

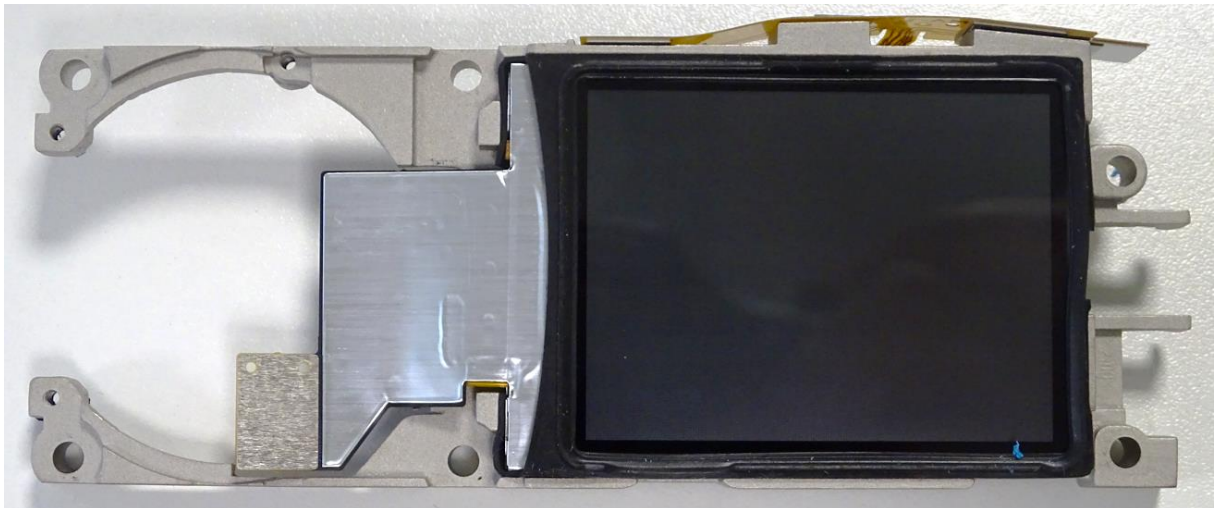


Figure 13. SC2021 Front Cover

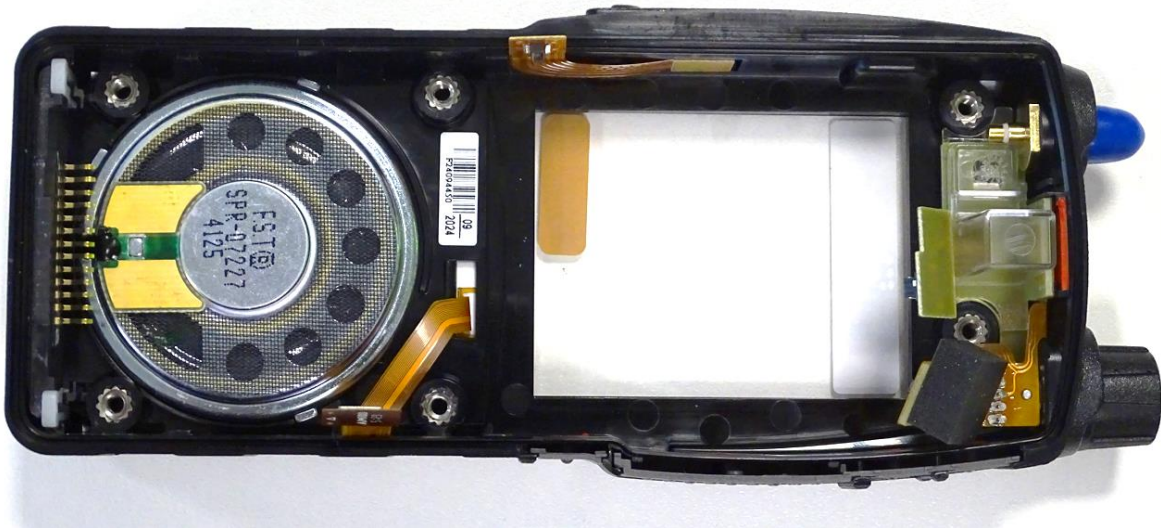


Figure 14. SC2021 Front Cover with Speaker Removed

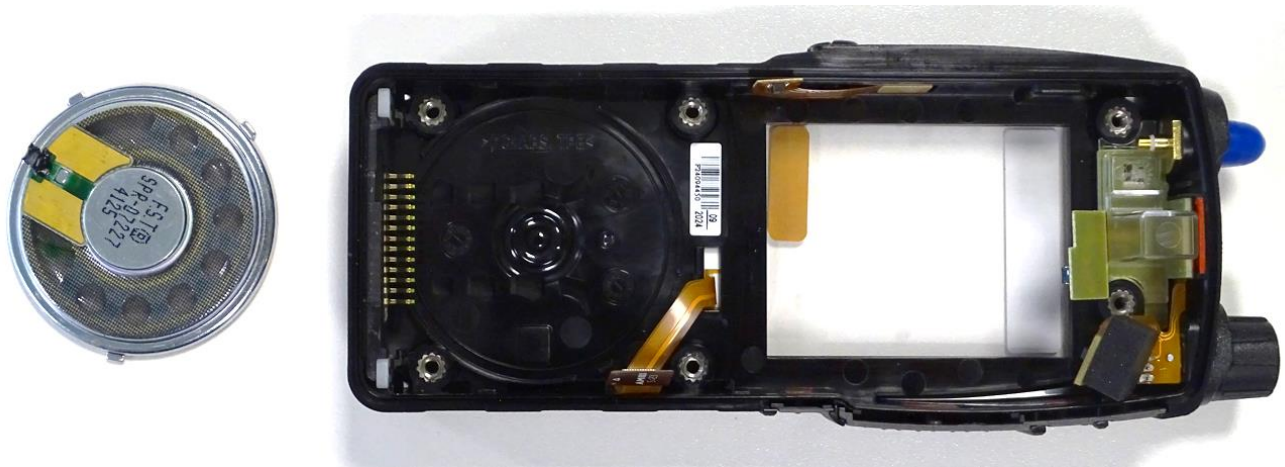
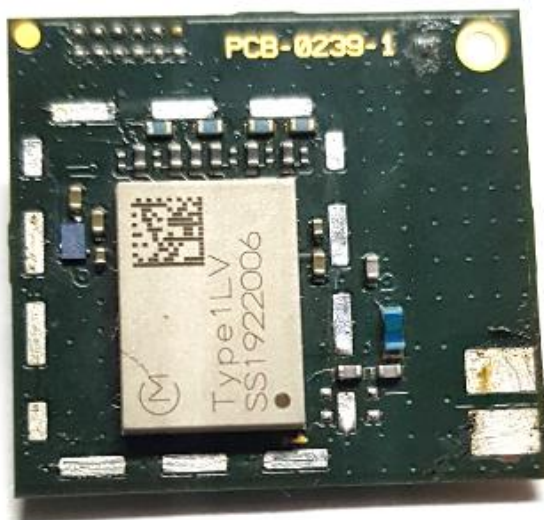


Figure 15. SC2021 Bluetooth/Wi-Fi Module



Area enclosed in red box is the BT WiFi Antenna.

Figure 16. SC2021 Bluetooth/Wi-Fi Module with Can Removed



END OF DOCUMENT