

Quick Start Guide



MED500X

High Definition Multimedia Player

mede8ar

INDEX

page 1	Index
page 2	Introduction
page 3	General Overview
page 4	Installing a Hard Drive
page 5	Connections
page 6	Connections continued
page 7	Formatting the Hard Drive
page 8	Remote Functionality
page 9	Home Network Samba Server
page10	Wired Network Connection and Setup
page11	Wireless Network Setup / Firmware Update
page12	Media Library
page13	Media Library continued
page14	Cover Art Preview
page15	File Manager
page16	Internet Radio
page17	Specifications

FCC Information:

This device complies with Part 15 of the FCC Rules. Operation is subject to the following two conditions:

this device may not cause harmful interference, and this device must accept any interference received; including interference that may cause undesired operation.

This Equipment has been tested and found to comply with the limits for a Class B digital device, pursuant to Part 15 of the FCC rules. **These limits are designed to provide reasonable protection against harmful interference in a residential installation.** This equipment generates uses and can radiate radio frequency energy and, if not installed and used in accordance with the instructions, may cause harmful interference to radio communications. However, there is no guarantee that interference will not occur in a particular installation. If this equipment does cause harmful interference to radio or television reception, which can be determined by turning the equipment off and on, the user is encouraged to try to correct the interference by one or more of the following measures:- Consult the dealer or an experienced radio/TV technician for help.

Changes or modifications to this unit not expressly approved by the party responsible for compliance could void the user authority to operate the equipment.

Thank you for purchasing the Mede8er Multimedia Player.

The MED500X is the latest generation multimedia player specially developed by Sanji for today's demanding media enthusiast. The Mede8er has been designed for good solid media playback from a hard drive, USB device, SD Card, Internet or Local Network source. The User Interface is neat and intuitive without being complicated. Sanji has more than achieved their design goals by offering a media player that supports most of the popular media formats at a very affordable price.

Due to the ever changing nature of Multimedia Players features and functions, Sanji has decided to only include a Quick Start Guide with the product. An up-to-date User Manual will be available for download from www.mede8er.com

Warranty

Mede8er products carry a 24 month from date of purchase warranty. In the event of warranty service please provide proof of purchase. Return your product to the store that it was purchased from or return it directly to Sanji Electronics (Pty) Ltd 106, 16th Rd Midrand, Gauteng, South Africa.

Warranty does not cover damage by

- a) Lightning or over voltage
- b) Water damage or liquid spill
- c) Misuse or abuse
- d) User tampering

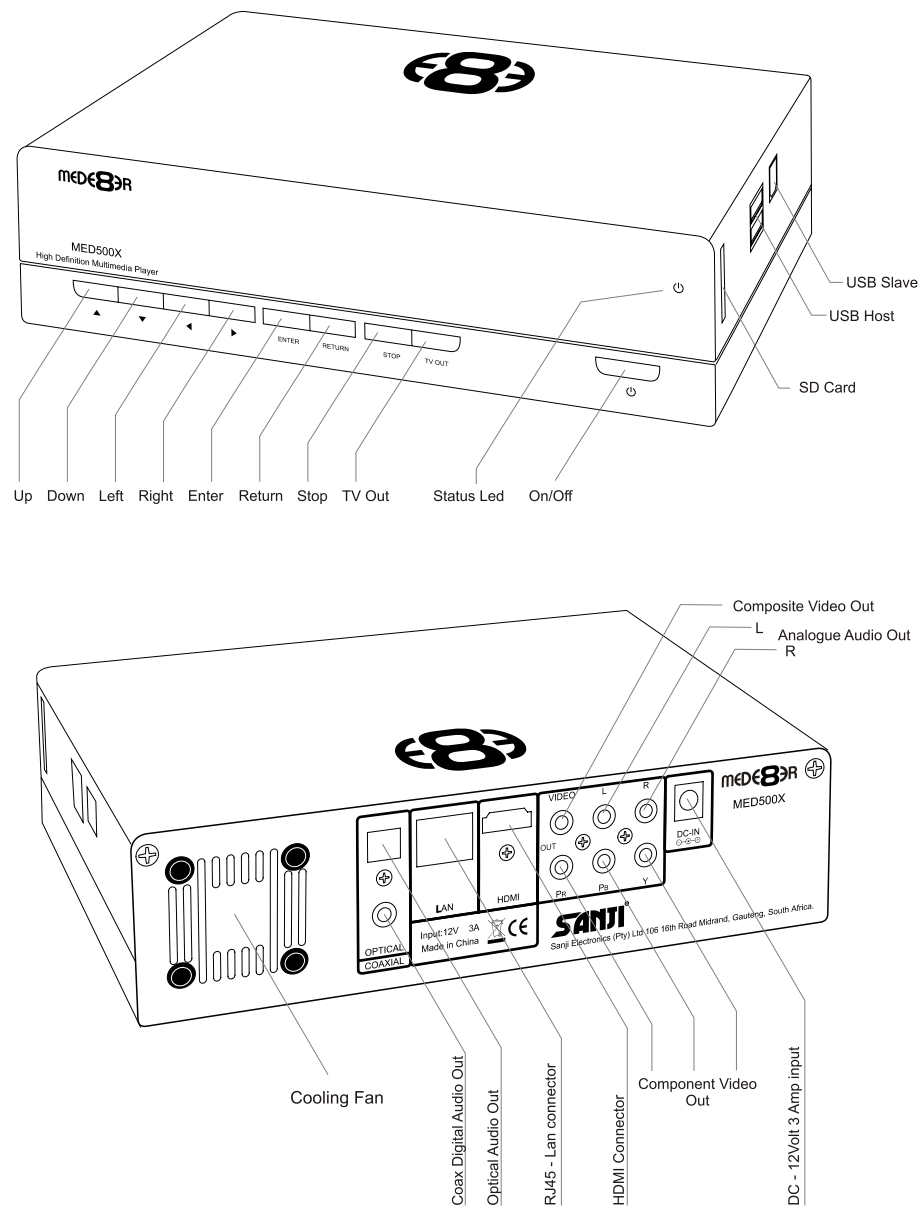
Sanji Electronics is not responsible for any loss of data irrespective of the cause.

Important Safety Instructions

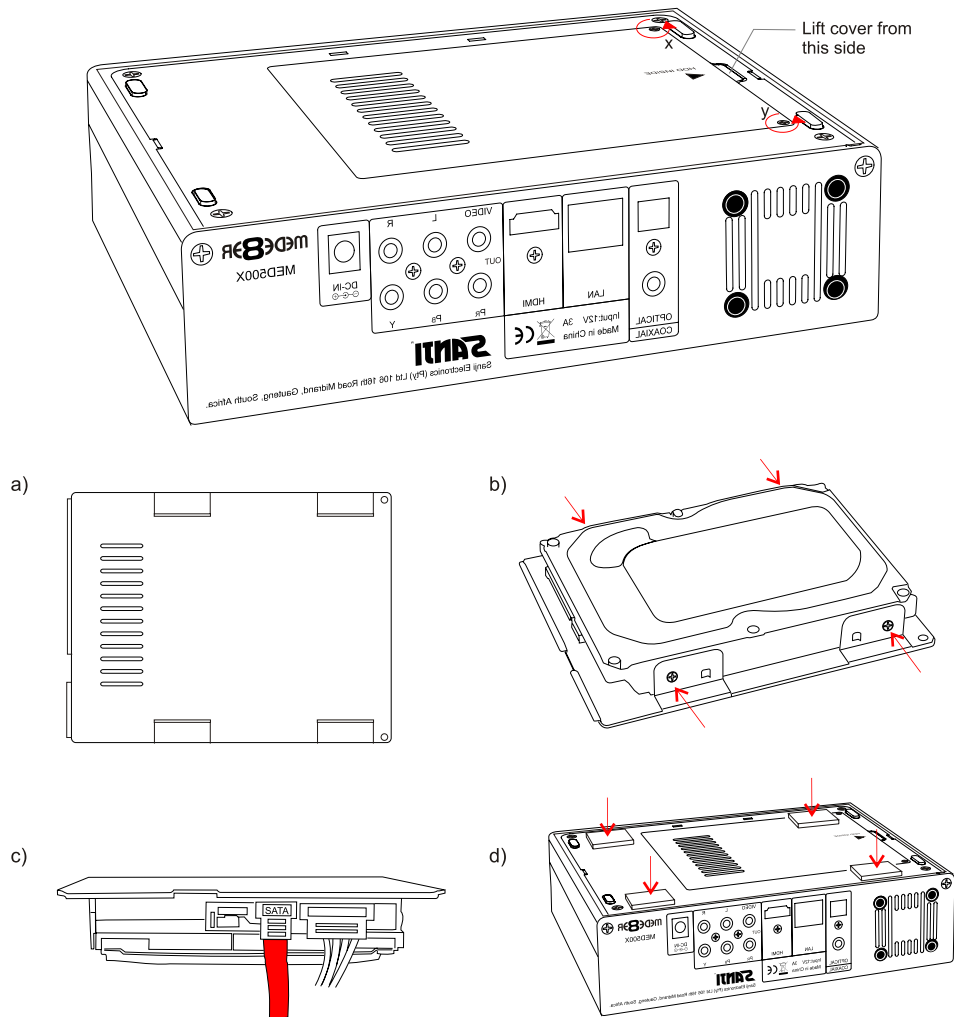
- Read these instructions for all components before using this product.
- Do not use this apparatus near water or moisture. Do not use this product near a bathtub, washbowl, kitchen sink, laundry tub, in a wet basement, near a swimming pool, or anywhere else that water or moisture are present.
- Clean only with a soft dry cloth and as directed by the manufacturer. Unplug this product from the wall outlet before cleaning.
- Do not block any ventilation openings. Install in accordance with the manufacturer instructions. To ensure reliable operation of the product and to protect it from overheating, put the product in a position and location that will not interfere with its proper ventilation. For example, do not place the product on a bed, sofa, or similar surface that may block the ventilation openings. Do not put it in a built-in system, such as a bookcase or a cabinet that may keep air from flowing through its ventilation openings.
- Do not install near any heat sources, such as radiators, heat registers, stoves or other apparatus that produce heat.
- Protect the power cord from being walked on or pinched, particularly at plugs, convenience receptacles, and the point where they exit from the apparatus.
- Only use attachments or accessories specified by the manufacturer.
- Unplug this apparatus during lightning storms or when unused for long periods of time to prevent damage to this product.

Refer all servicing to qualified service personnel

GENERAL OVERVIEW



INSTALLING A HARD DRIVE



Make sure that the DC cable is unplugged. Turn the Mede8er upside down and unscrew the hard drive cover screws x and y. Lift the hard drive cover and remove it, place it on a flat surface with the mounting tabs facing upright. Fit a compatible SATA hard drive into place with the label facing upwards and the connectors facing the side with the air vents. Secure the hard drive with the four screws provided.

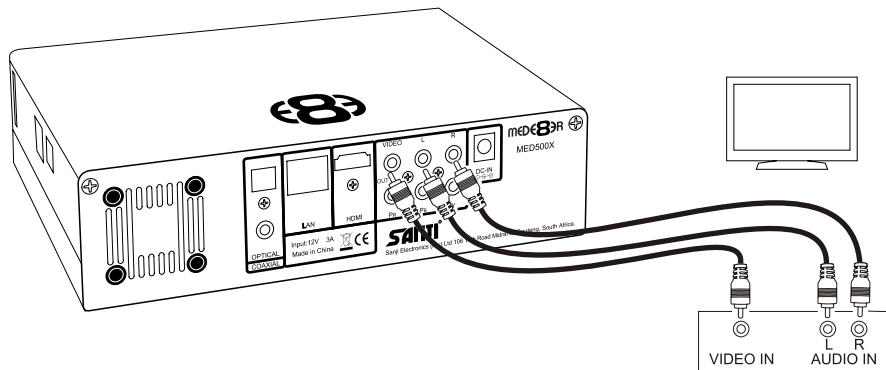
Connect the hard drive power connector and the red SATA data connector from the player to the hard drive diagram c. Re fit the hard drive cover into the Mede8er body and tighten the two securing screws x and y.

To reduce hard drive vibration noise you can use the supplied Neoprene pads. Just peel of the adhesive side and stick onto the base as indicated in diagram d.

CONNECTIONS

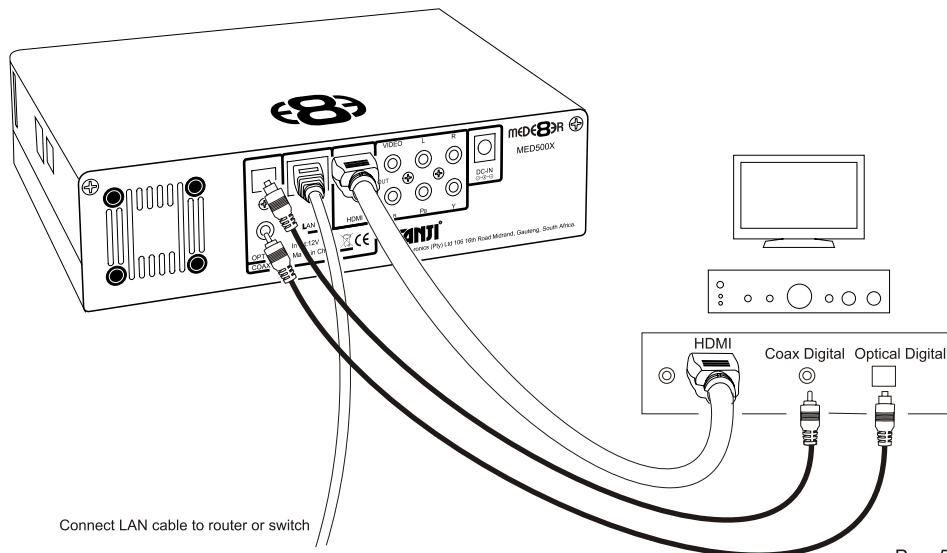
Analogue Audio and Composite Video connection to TV.

Composite Video offers the most basic picture quality connection and should only be used if your TV does not have a HDMI or Component input. Use RCA analogue audio outputs in the absence of HDMI or Digital Audio inputs on your TV or Home Theatre system. RCA analogue outputs will output a downmix from multi-channel to stereo.



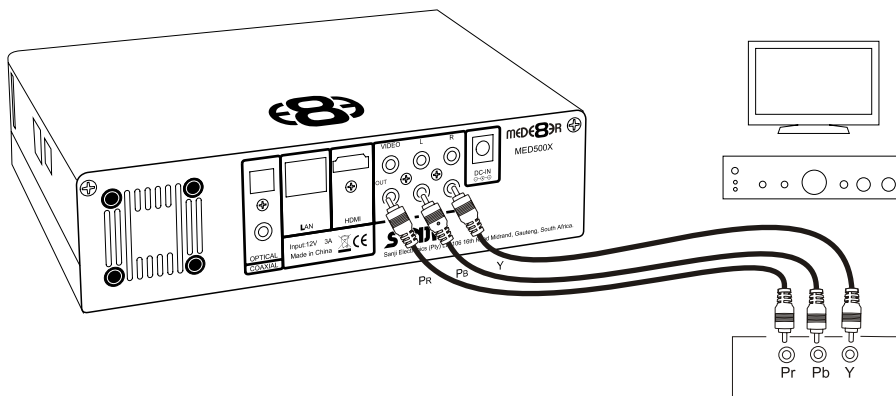
HDMI - RJ45 Network - Coax Digital - Toslink Connection to a TV or Amplifier

For digital audio connection to your Home Theatre System you can either use the TOSLINK Optical or the Coax Digital output. The MED500X supports both Passthrough and Downmix for both Dolby Digital and DTS signals. If you want your Home Theatre Amplifier to decode the surround sound stream you should use either Digital Audio output and set the Audio Output to SPDIF RAW in the Setup menu.



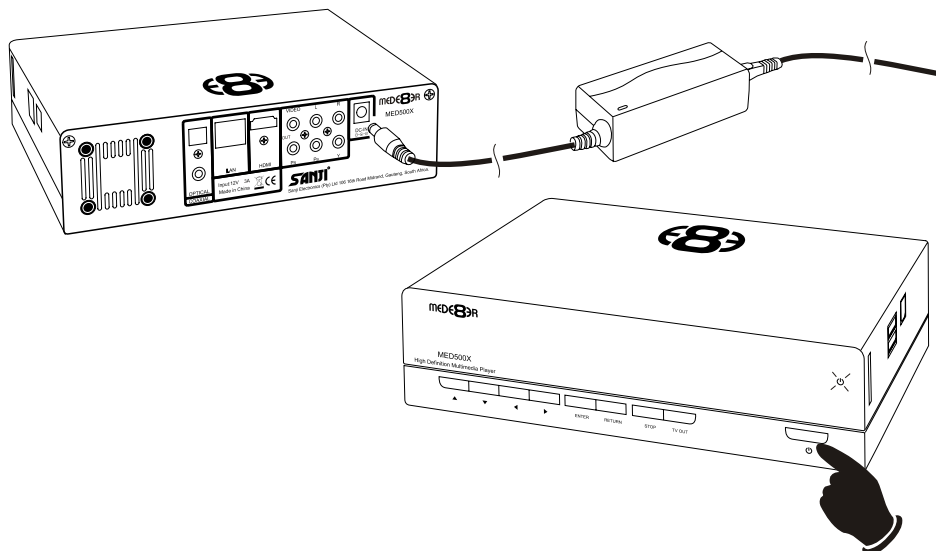
Component Video Connection to Amp or TV

Component Video offers the next best picture quality to HDMI so if your system does not have a HDMI input we suggest you use the Component Video Connection.



Power up and Standby

Plug the AC/DC adapter into the mains outlet and plug the DC Jack into the DC IN at the rear of the MED500X. DO NOT USE ANY AC/DC ADAPTER AND ONLY USE THE ONE SUPPLIED otherwise you may cause damage to the unit. Press the On/ Off button on the Mede8ers front panel and front facia LED will turn on Blue. You can put your Mede8er into standby by pressing the On/ Off button on the remote. When in standby the front facia LED will turn Red.

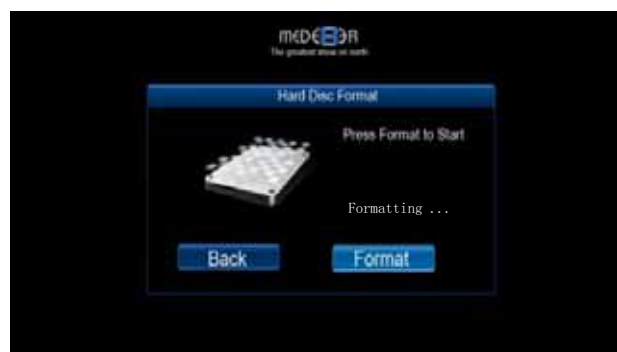
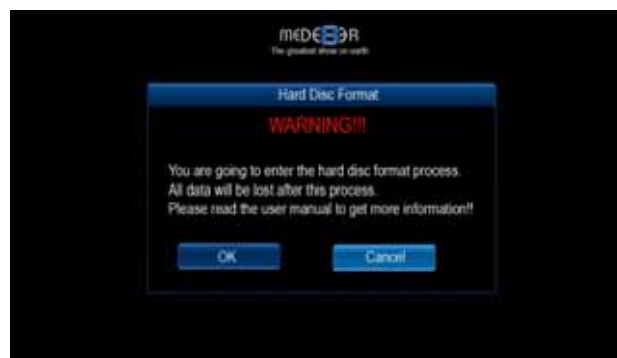


FORMATTING THE HARD DRIVE

The MED500X has a built in Hard Drive format feature that formats the hard drive with a main NTFS partition and other small internal partitions for propriety use.

The Hard Drive should be formatted in the Mede8er MED500X to ensure full functionality. A pre formatted Hard Drive can be used but you may not be able to use all the internal features of the MED500X.

To Format the internal Hard Drive select SETUP menu and then HDD Format.



WARNING: FORMATTING THE HARD DRIVE WILL ERASE ALL DATA

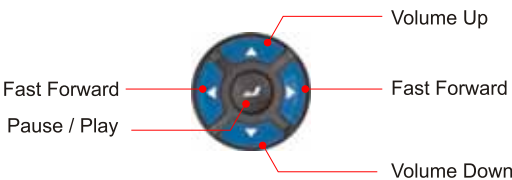
REMOTE FUNCTIONALITY



Navigation Buttons Additional Functionality

To assist ease of use operation - The Mede8er remote has been designed to be ergonomic and simple to use. Now while watching your Videos you can intuitively navigate and change certain function without the need to look down at the remote control.

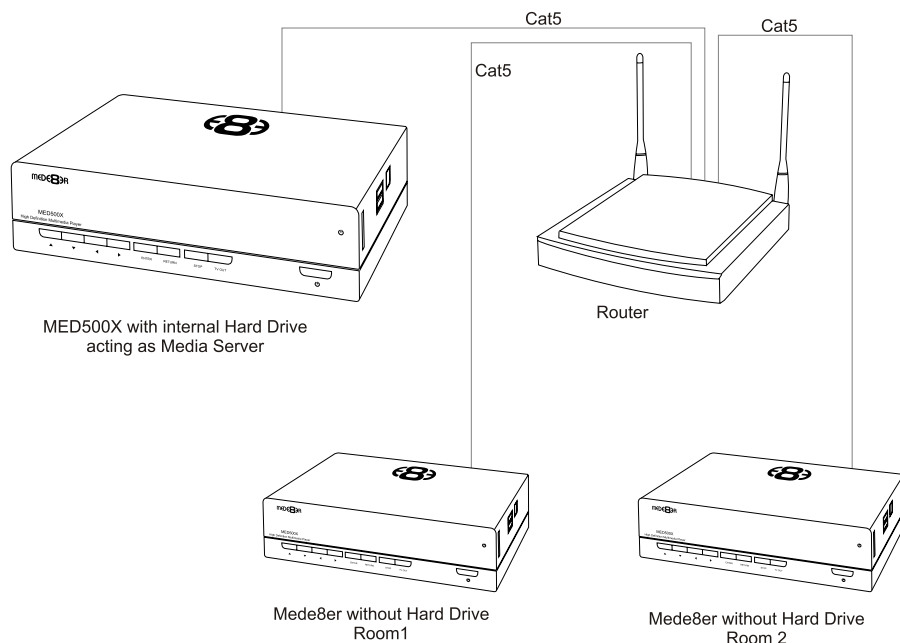
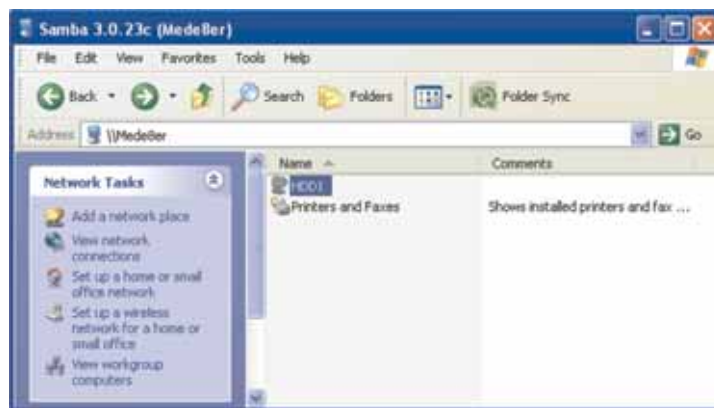
During Video Playback (excluding DVD files) you can use the navigation buttons for operational functions like Fast Forward, Rewind, Pause, Stop, Volume Up and Volume Down.



HOME NETWORK SAMBA SERVER

The Mede8er has NAS (Network Attached Storage) functionality built in. And although it is limited in transfer speed compared to standalone NAS servers it performs very well if speed is not your major requirement. You can also use the MED500X as a Media Server and stream content to other Mede8er's on your home network.

The Samba function is enabled or disabled via the Extension Info in the System menu. Should the Samba stop working for any reason we suggest you re-boot the Mede8er ie Disconnect the DC Jack at the rear and re connect and press the on/off button on the front panel.



WIRED NETWORK CONNECTION AND SETUP

The Mede8er MED500X can be connected to your local network by means of a RJ45 CAT5 cable. The Mede8er is supplied standard with a UPnP facility and a Samba Client that allows connection to your local area network via a router or switch. You can share media files from your PC and stream media content to the Mede8er and you can use the Mede8er as a Media Server to stream media content to other Mede8er's on your network.

Press the "setup" button on the Mede8er Remote or select "setup" tab on the home page. Select "Network" option in the setup window and press "OK" to confirm. Network configuration allows for either automatic or manual IP setup.

Follow the on-screen instructions to complete the network setup.
If you connect to a wired Ethernet network using DHCP, Mede8er automatically detects your network. Alternately you may have to enter your IP address, subnet mask, router, and DNS addresses manually.

DHCP IP (AUTO)
Choose this option if you want your router to assign a dynamic IP address to Mede8er. This option is easy to use and recommended for normal users.

FIX IP (MANUAL)
This option allows you to assign a static IP address to Mede8er. This option requires modifying network settings of the Mede8er and is recommended for advanced users. To set a Static IP for your Mede8er, enter the information IP Address, Subnet Mast and Gateway and DNS Server Address as relevant to your router as in the screen below.

The IP address, Gateway information shown below is for reference purposes only. Do NOT copy these

DHCP IP Auto



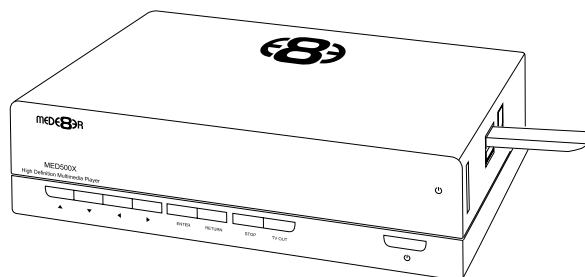
Fixed IP Manual



WIRELESS NETWORK SETUP

The Mede8er MED500X is only compatible with the Mede8er Wireless Dongle 802.11n (Other brands will not work) Refer to User Instructions supplied with the Mede8er dongle for wireless connection setup.

FIRMWARE UPDATE



Due to continual progress the Firmware will be updated from time to time. Pls check the website www.mede8er.com for the latest updates. You can update your Mede8er to the latest firmware by following these simple instructions.

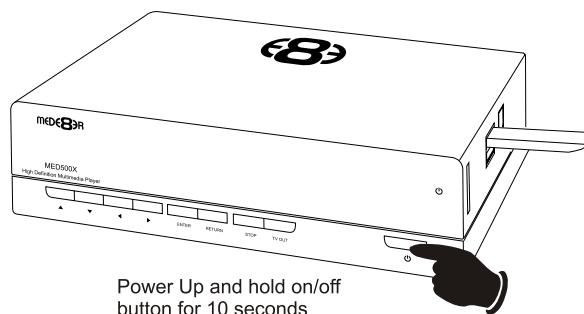
Download the latest Firmware from the Mede8er website. Unzip the file and you will find two files ie install.img and logo_pal.bmp. Copy both these files to the root directory of a Flash Drive. Plug the flash drive into the Mede8er. Go to the Setup menu and then System and select System Update. Now select System Reinstall. The Mede8er will now proceed to upgrade the firmware. The front facia LED will flash Red and Blue during the update procedure.

DO NOT REMOVE POWER DURING THE UPDATE PROCESS.

Emergency Recovery Procedure

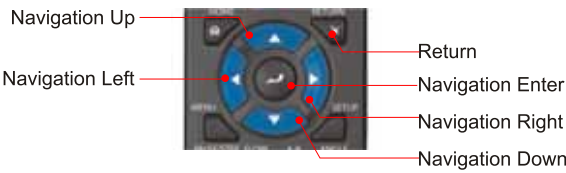
Download the latest Firmware from the Mede8er website. Unzip the file and you will find two files ie install.img and logo_pal.bmp. Copy both these files to the root directory of a Flash Drive. Plug the flash drive into the Mede8er. Power the Mede8er down. Power up again and hold the on/off button for 10 seconds and the unit will automatically re install the Firmware.

DO NOT REMOVE POWER DURING THE EMERGENCY RECOVERY PROCEDURE.



MEDIA LIBRARY

Select Media Library from the home page and a new screen will load then select the source option you require. You can choose between USB device, Local HDD, SD Card, Network, Upnp and Playlist.



Once you have selected your source input you can browse to the folder or file you want to view by using the navigation buttons on the remote control. The top tabs filters the files by All, Music, Photo and Movies. All files and folders are displayed on the left hand side and a preview window is located on the right of the screen. When you play music files a music window will appear at the bottom left of the screen.



Media Library Continued

The Media Library also offers a simple file Rename and Delete facility. Select a file that you want to rename or delete and press the MENU button on the remote control. A dialogue window will open with options to Return, Rename or Delete.



Menu Button

System Setup

The Mede8er had a comprehensive setup area where functions and features can be optimized to suit your individual needs. The System Setup is arranged under the following tabs : Audio, Video, Network, System and Miscellaneous.

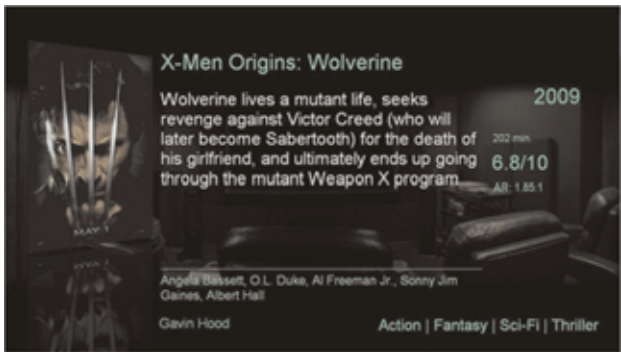


COVER ART PREVIEW

Mede8er has the built in facility to preview cover art and about.jpg inside a folder. All you need to do in order to use this very useful feature is to arrange your collection with each video, in its own folder. Place a JPEG picture together with each movie in the folder and you will be ready to go. You can easily download DVD cover art for your picture or you can use a program like Movie GUI Builder to make your about.jpg picture that will contain additional content information such as Synopsis, Cover, Rating, Year, Actors etc etc



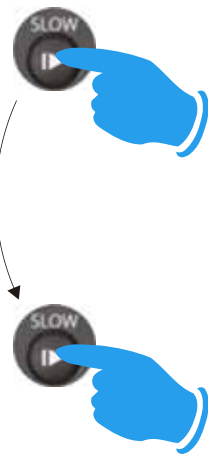
Navigate to a folder. The JPEG picture inside will be displayed in the preview window.



To view the preview in full screen press the SLOW button.



To minimize back to the preview window press the SLOW button again.



FILE MANAGER

Select File Manager from the home page and the File Manager screen will load. Now select the source option you require to copy or move files or folders from. After selecting the Source the focus will automatically change to the Destination window. Now select the destination option you require to copy or move files to.

The focus will now change back to your Source drive and you can now navigate to the files or folders you want to move or copy. Select the files or folders by pressing the SELECT button on the remote control and a red tick will appear next to the file or folder (multiple files can be selected). To de-select just press the SELECT button. Once you have completed selecting the files or folders you want to copy or move press the right navigation button.

Now you can navigate the destination option you selected earlier. You can choose to copy or transfer to an existing folder or make a new folder. If you choose "new folder" then a keyboard will open on-screen allowing you to type the new folders name. Now navigate to the new folders name and press the right arrow navigation button on the remote.

A screen will appear asking if you want to move or copy the files or folders. Once you select your option a file transfer screen will open showing you the file transfer progress.



Press SELECT to select a file or folder



INTERNET RADIO

The Mede8er has a built in Internet Radio that allows you to listen to live Shoutcast radio stations on your TV or Home Theatre System. The Mede8er must be connected to the Internet in order to use the Internet Radio function. Choose the Station icon and a Station screen will open with a list of available stations. You can view the next page by pressing the right navigation arrow on your remote control and view the previous pages by pressing the left navigation arrow on your remote control.

To listen to a station press the Enter button on the remote and the Channel screen will load. Choose a Channel and the station and content information will appear on the right panel and the station will play.

Press the Select button on the remote control to save a Station to Favorites (Channels cannot be saved). To delete a station in the Favorite folder -- Open Favorites and select the station and press the SELECT button on the remote. You can also search stations by Genre eg Top 25 Streams, Alternative, Classical, Comedy, Country etc etc



WARNING - Streaming Live Internet Radio uses bandwidth so use it with caution.



SPECIFICATIONS

Processor: Realtek RTD1073 - 16M SPI Flash - 128MB DDR2 SDRAM

Video Codec Supported: MKV, H264, DVD (VOB - IFO - ISO), DIVX, XVID, DAT, AVI, MPEG, HD MPEG-2, TS, HD MPEG-4, SP, ASP, AVCD (H.264), MTS, M2ts, WMV9, FLV, VC-1, Real Networks (RM/RMVB) 8/9/10, up to 720p

Audio Codec Supported: MP3, MP2, OGG Vorbis, PCM, LPCM, AAC, RA, Dolby AC3, DTS, FLAC, WAV, WMA

Standard (DRM, & Advanced Profile not supported)

Photo format Supported: JPEG, BMP

File System Supported: FAT32, NTFS - UI Format Feature

Input / Output

- HDMI 1.3, Component video, Composite Video
- Stereo RCA audio for analog audio connection
- SD Card Slot
- S/PDIF optical Output / Coaxial Digital RCA Output
- Video output resolution - NTSC, PAL, 480p, 576p, 720p, 1080i, 1080p
- USB - 2.0 HOST port x 2 (compatible to USB 1.1)
- USB - 2.0 SLAVE port

General

- 3.5" SATA Internal Hard Drive Bay up to 2TB compatible
- Built in 40mm cooling fan
- Playlist creation from remote
- Screensaver – Selectable in GUI setup
- Resume playback feature
- Photo slide show with background music
- Network - Ethernet 10/100 Mbps
- Optional Wi-Fi (802.11b/g/n up to 300Mbps)
- Samba server - NAS storage
- A/V streaming via UPnP Media Server
(CNN - YouTube etc via optional program such as PlayOn, Tversity etc)
- Internet Radio (SHOUTcast)
- File Copying - Card, USB, HDD and Network
- Subtitle: SRT, SSA, SUB, SMI format

Contents

MED500X Player, Remote Control, AC/DC Adapter, AV cable, HDMI cable, USB cable, USB extension cable, Carry Bag.

Specifications subject to change without notice



High Definition Multimedia Player

www.mede8er.com

Sanji Electronics (Pty) Ltd 106 16th Rd Midrand, Gauteng, South Africa.
Tel: 2711 2667500 Fax: 2711 2667501 Email Info@mede8er.com