

Car Audio

DV-9812 CIRCUIT OPERATION PRINCIPLE DESCRIPTION

Main control Circuit (fig1) deal with DSP (Digital Signal Process) and power control.
Fig1a

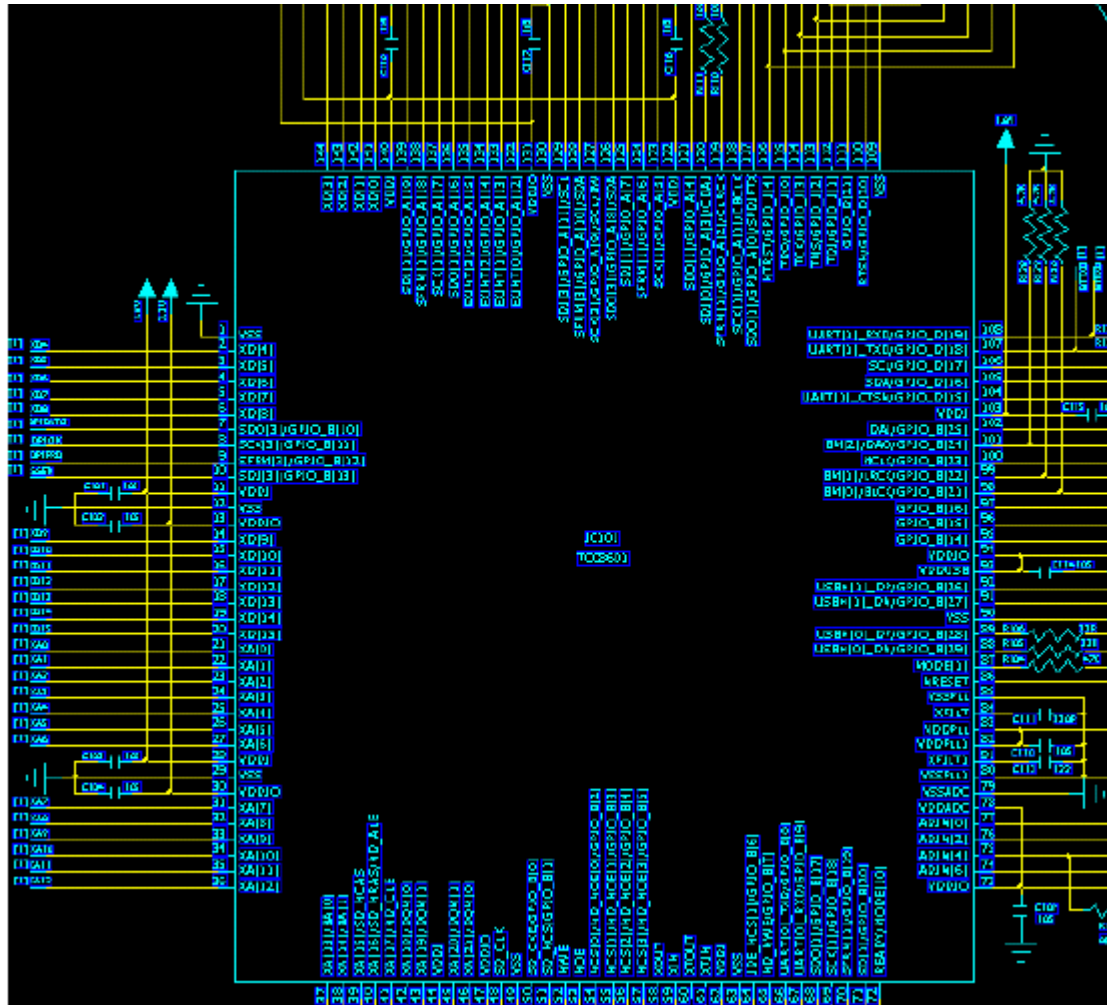
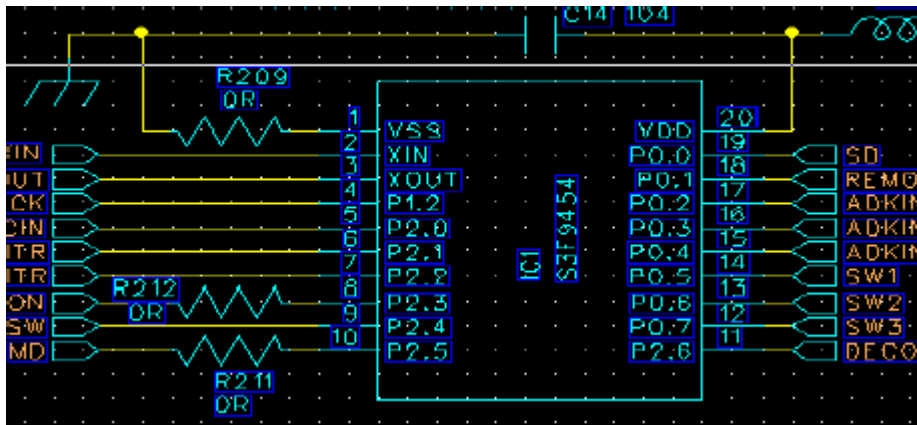
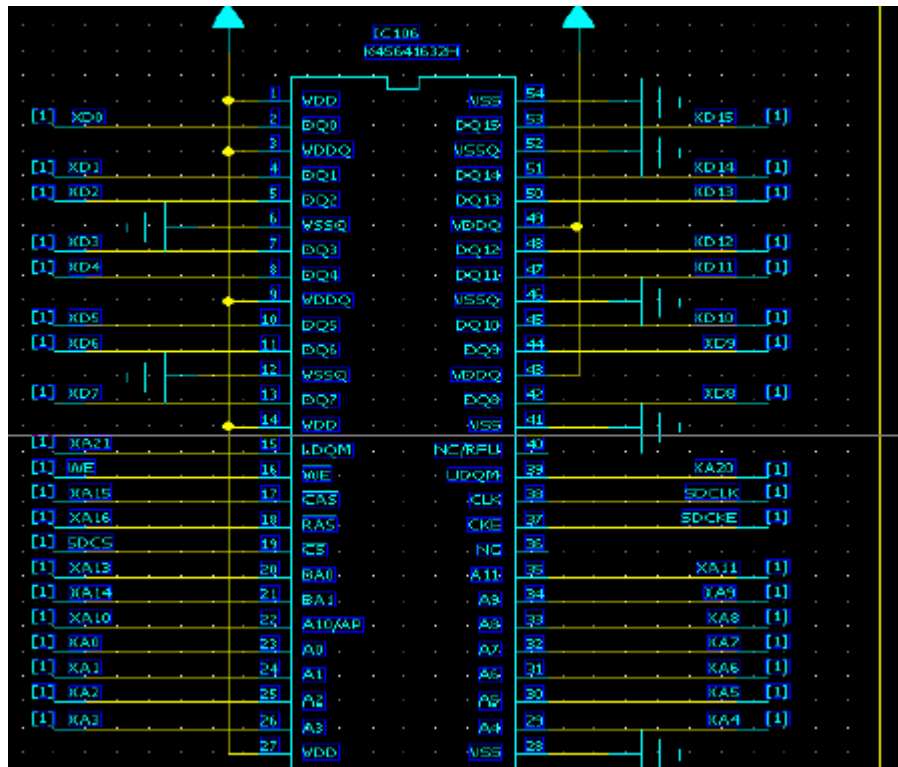


Fig1b



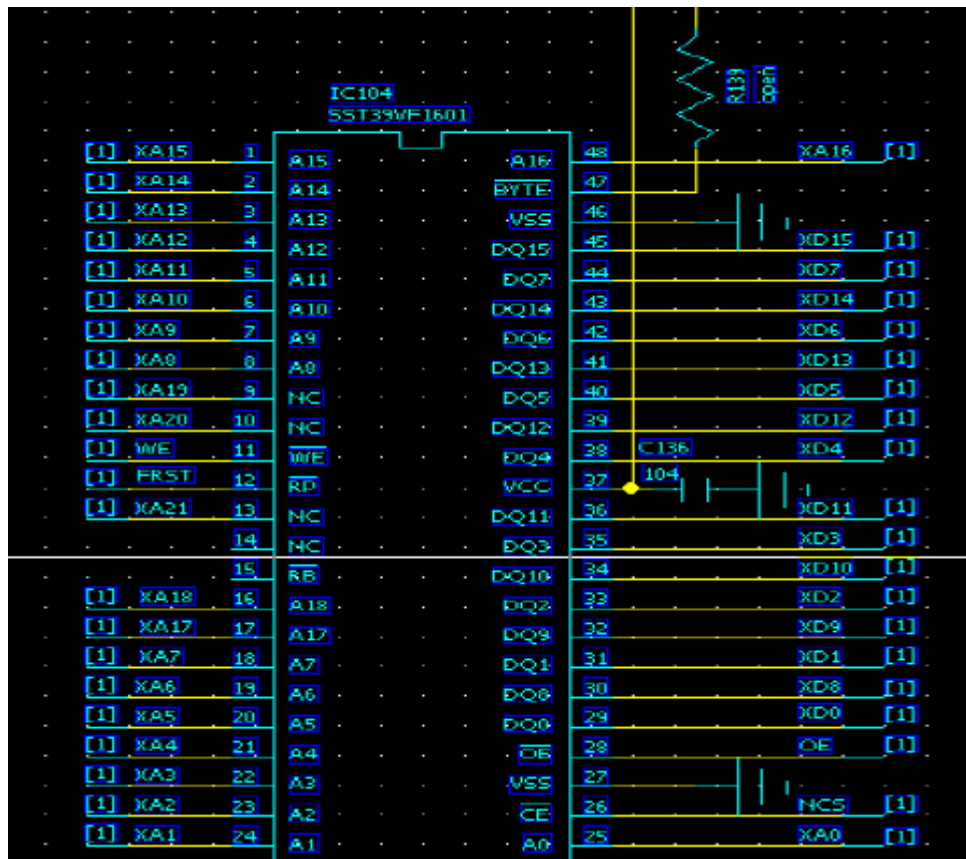
SDRAM circuit (fig2) used for store un-processed digital signal.

Fig2



NOR-FLASH circuit (fig3) used for store the system software and last memory data.

Fig3



Audio Process (fig4) used for audio amplifier. (fig5) used for sub-woofer amplifier.

Fig4a

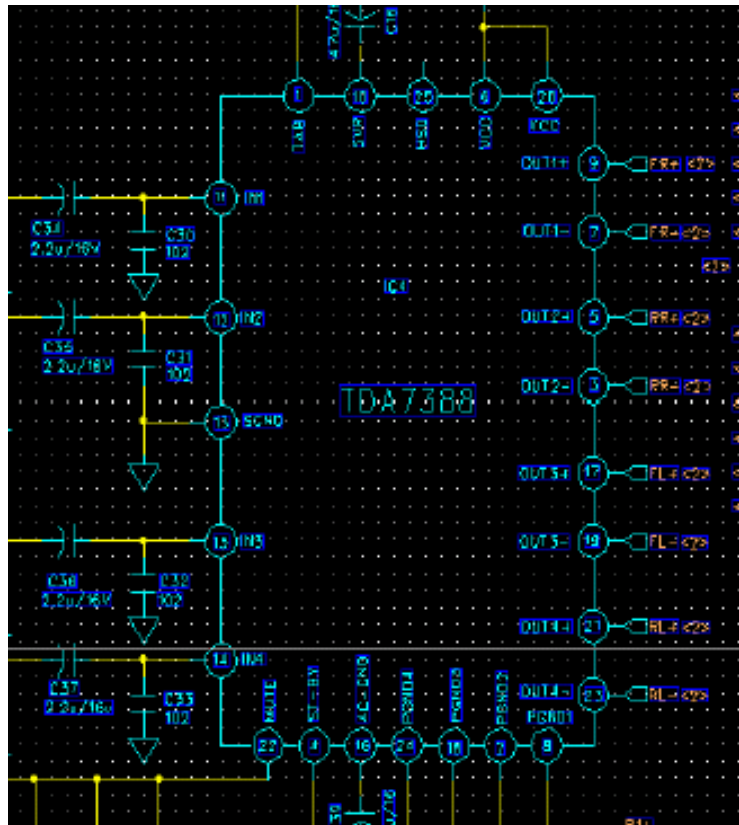


fig4b

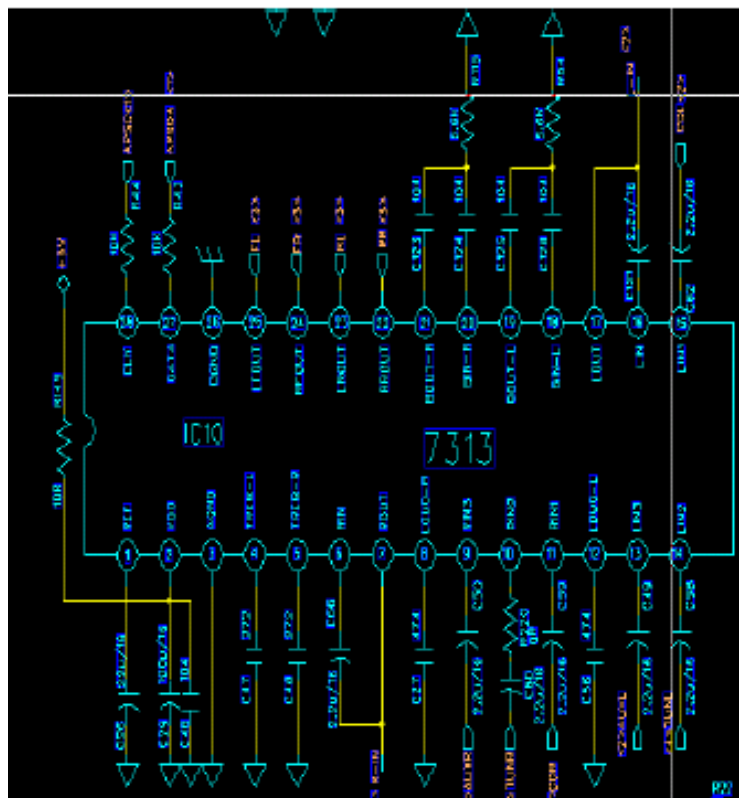


Fig4c

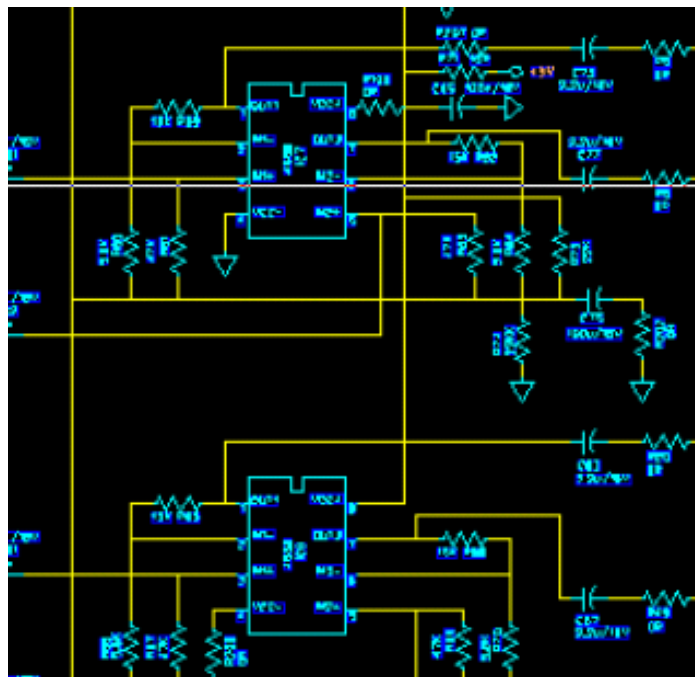


fig5

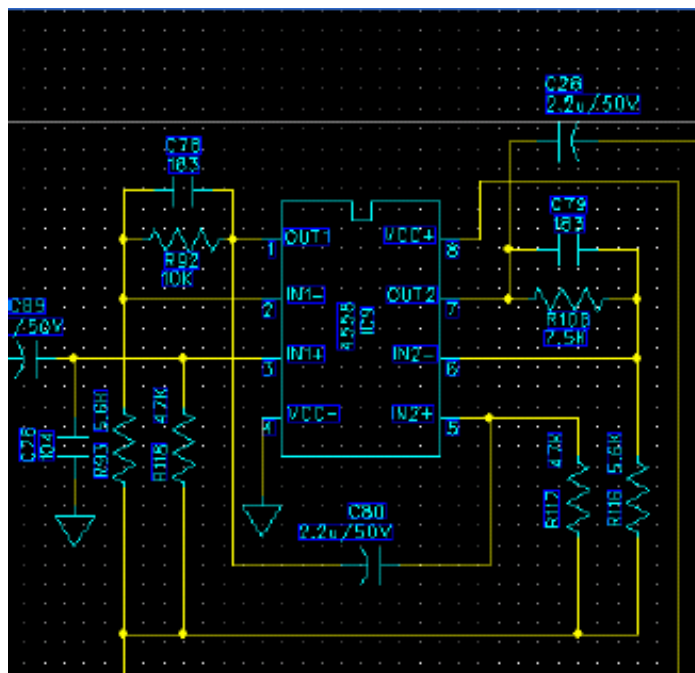


Fig6

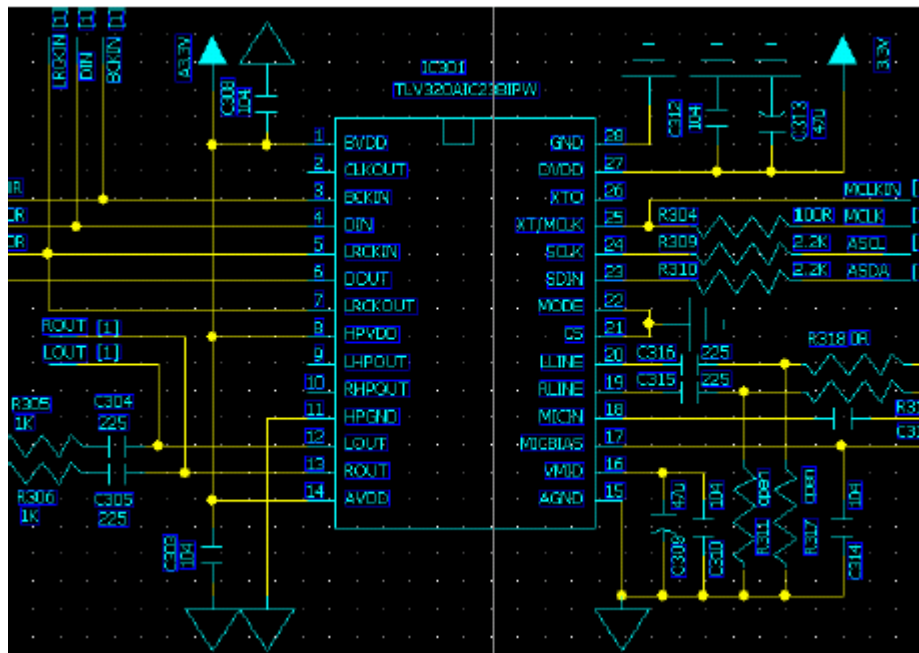


Fig7

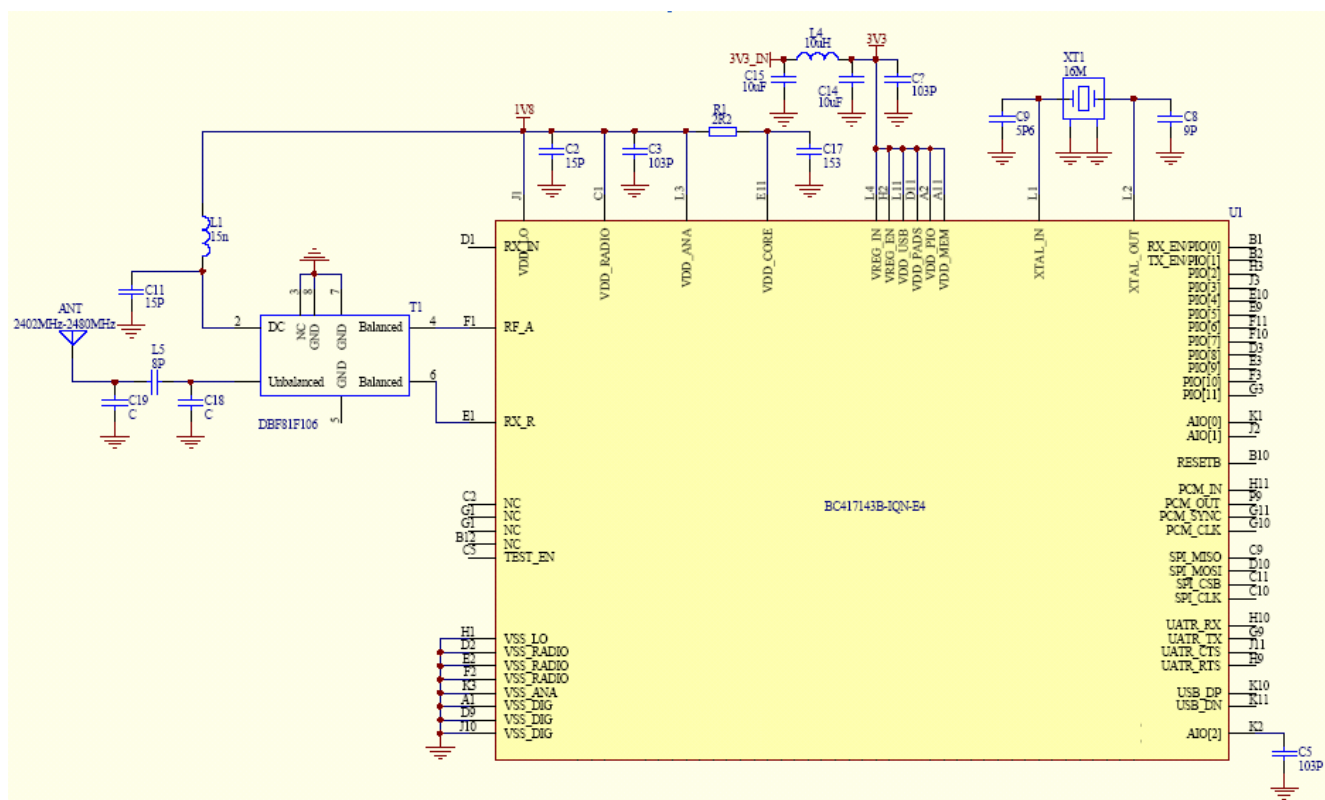


Fig8

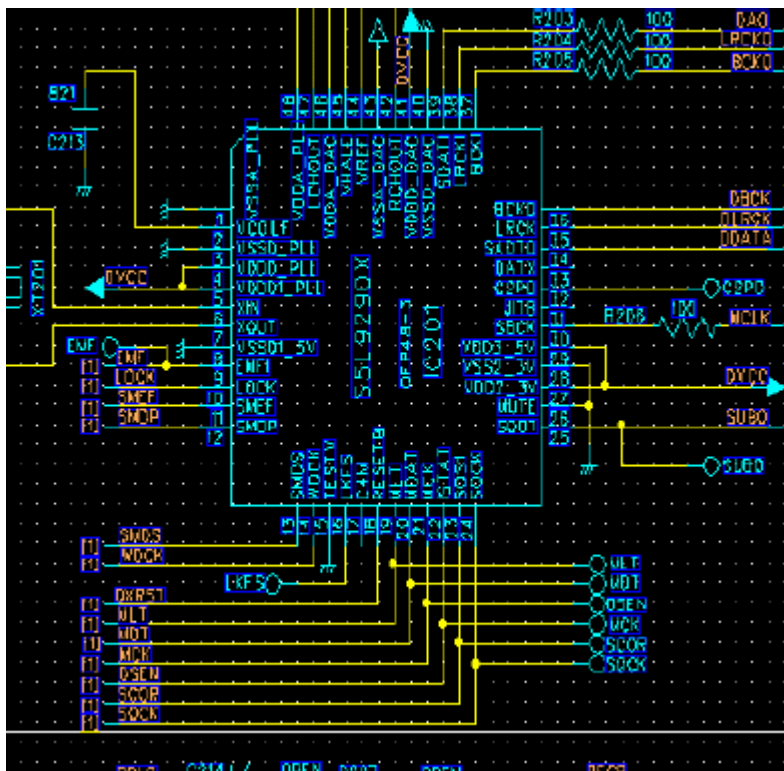
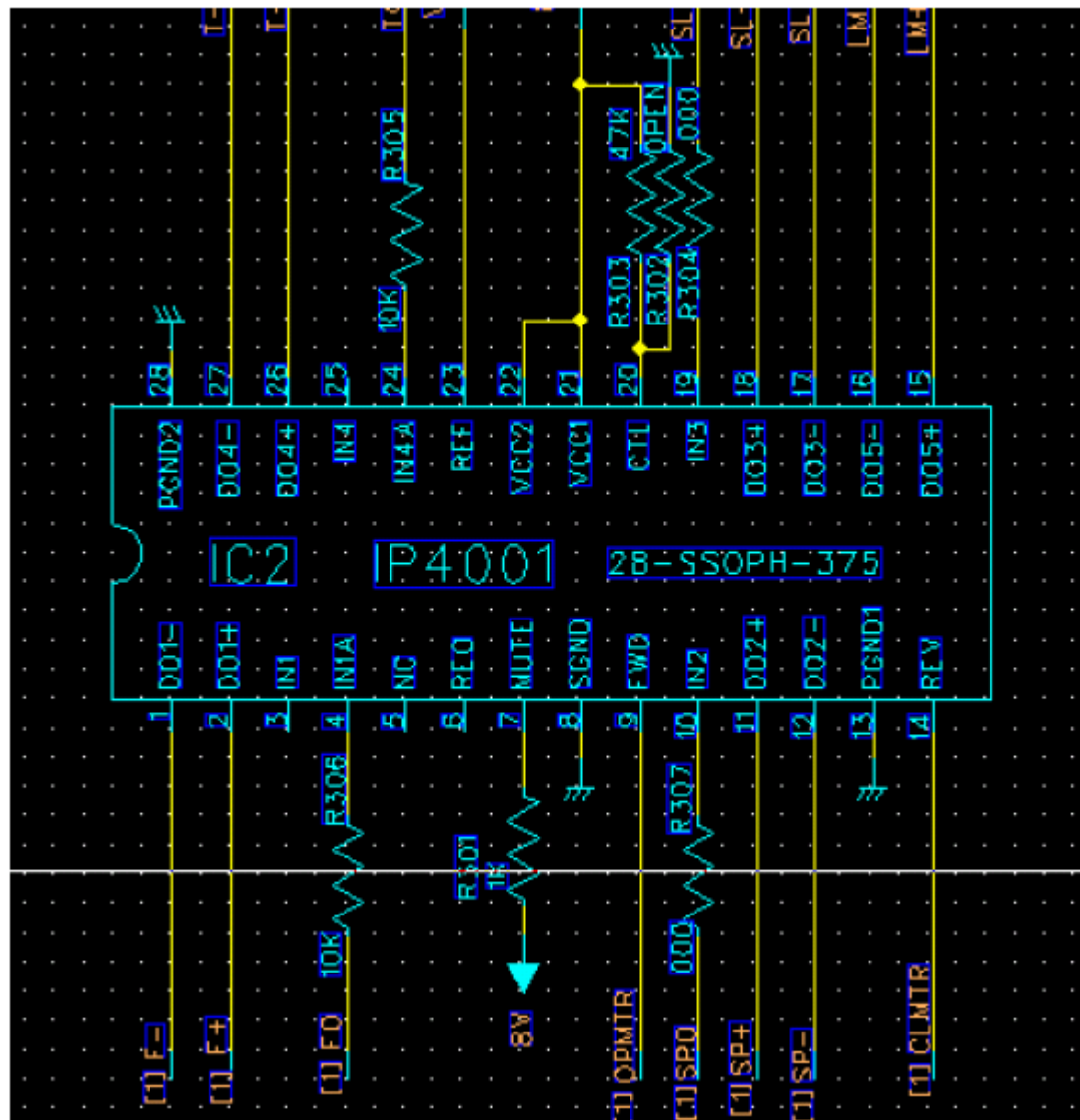
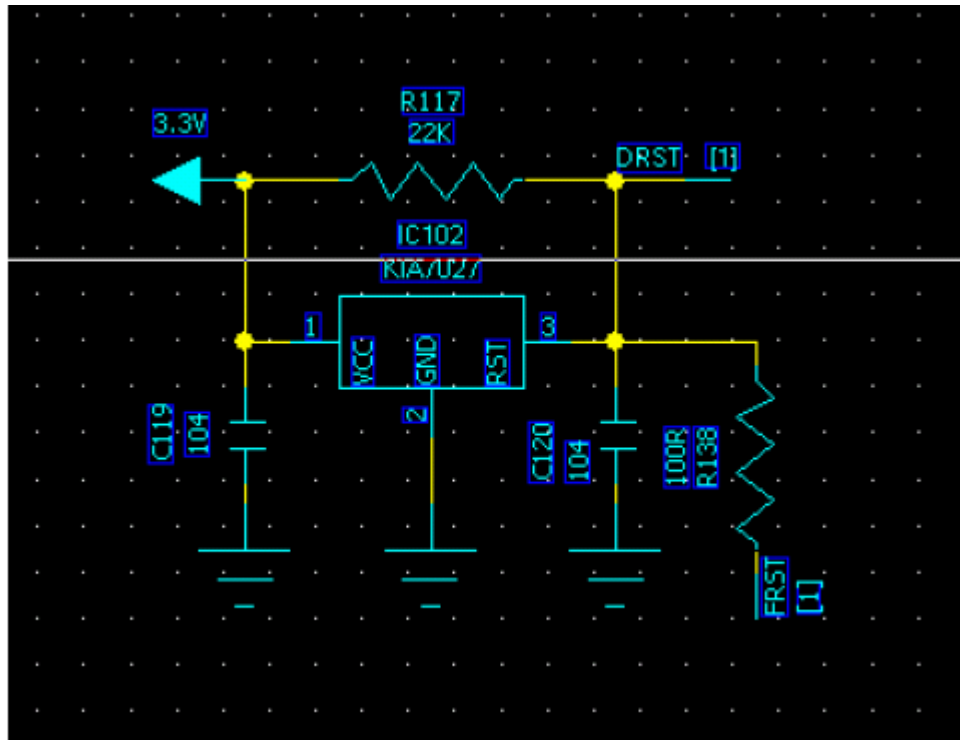


Fig10



Reset circuit (fig11) used for reset when power on.

Fig11



Power (fig12) used for supply power.

Fig12a

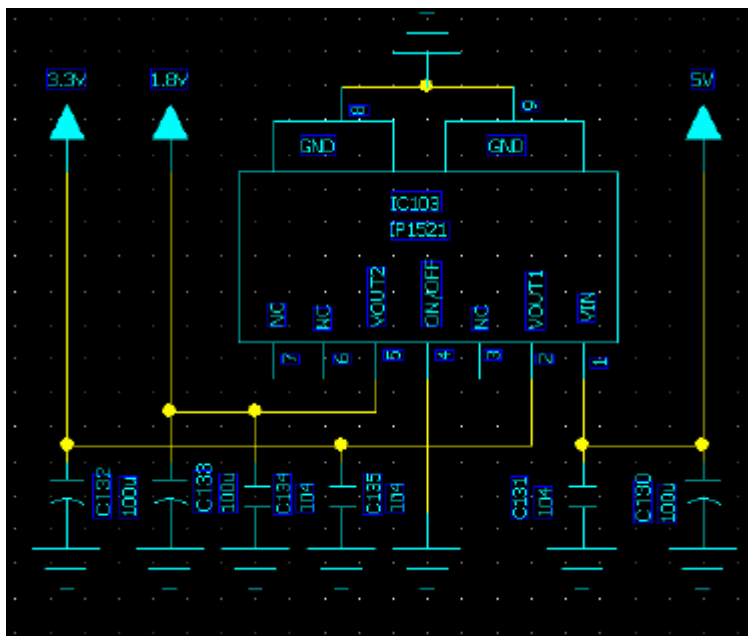


Fig13

