

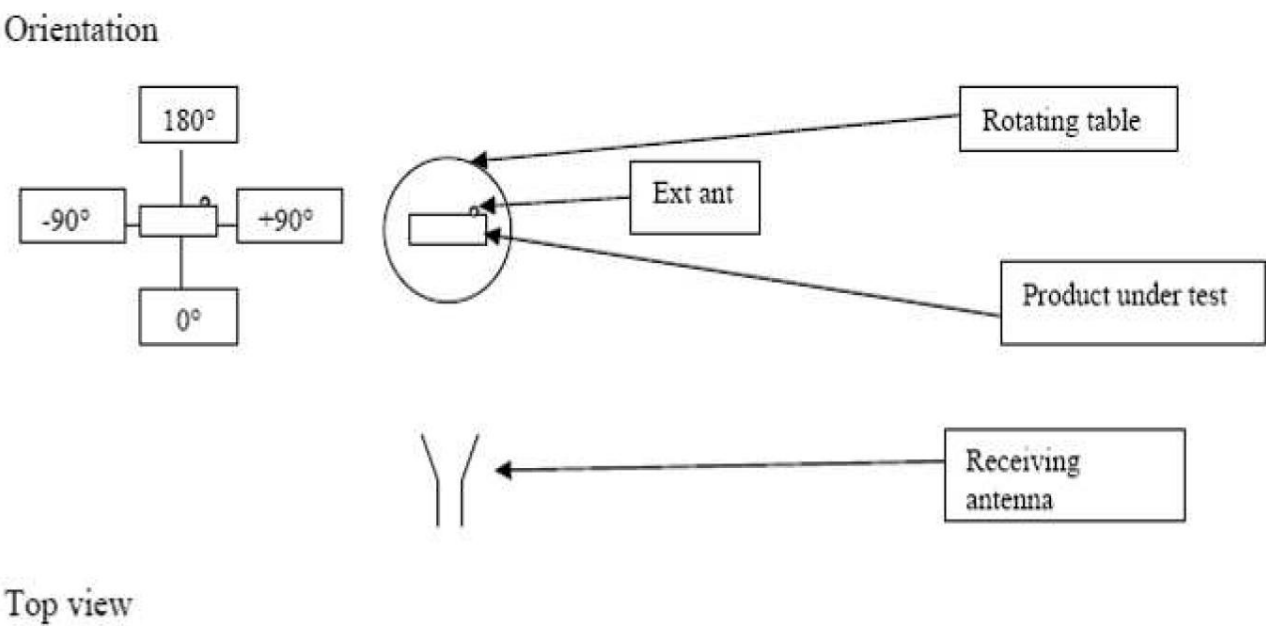
ANTENNA TEST REPORT

Applicant	
Address	

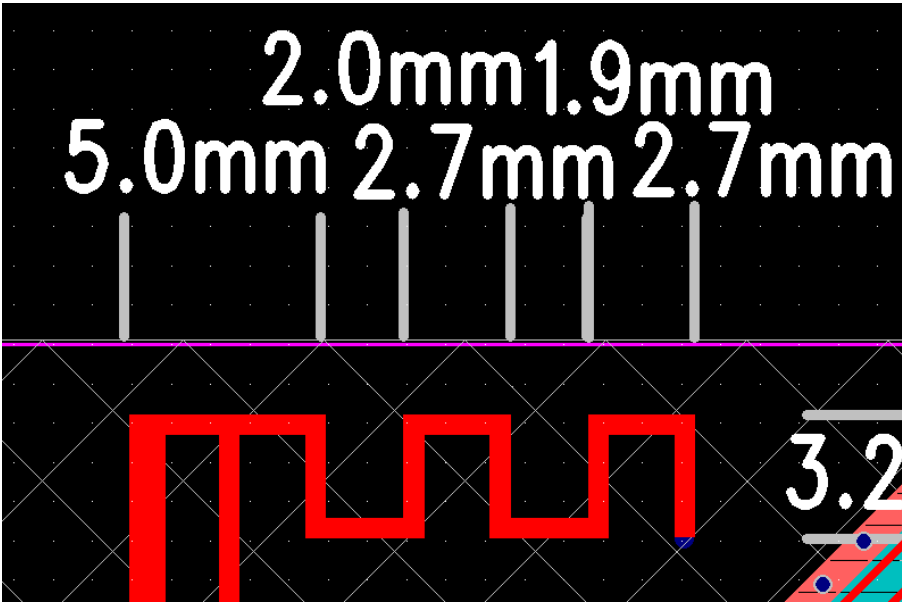
Manufacturer or Supplier	ZHUHAI JIELI TECHNOLOGY CO.,LTD
Address	Texas Instruments, Post Office Box 655303, Dallas, Texas 75265
Product	Antenna
Brand Name	
Model	
Max. Peak Gain	-1.17 dBi
Data of test	July 26, 2023

Test by EMC Department	Approved by EMC Department
钟红胜	钟红胜

1. MEASUREMENTS SETUP



2. SIZE OF THE ANTENNA



3. TEST INSTRUMENTS

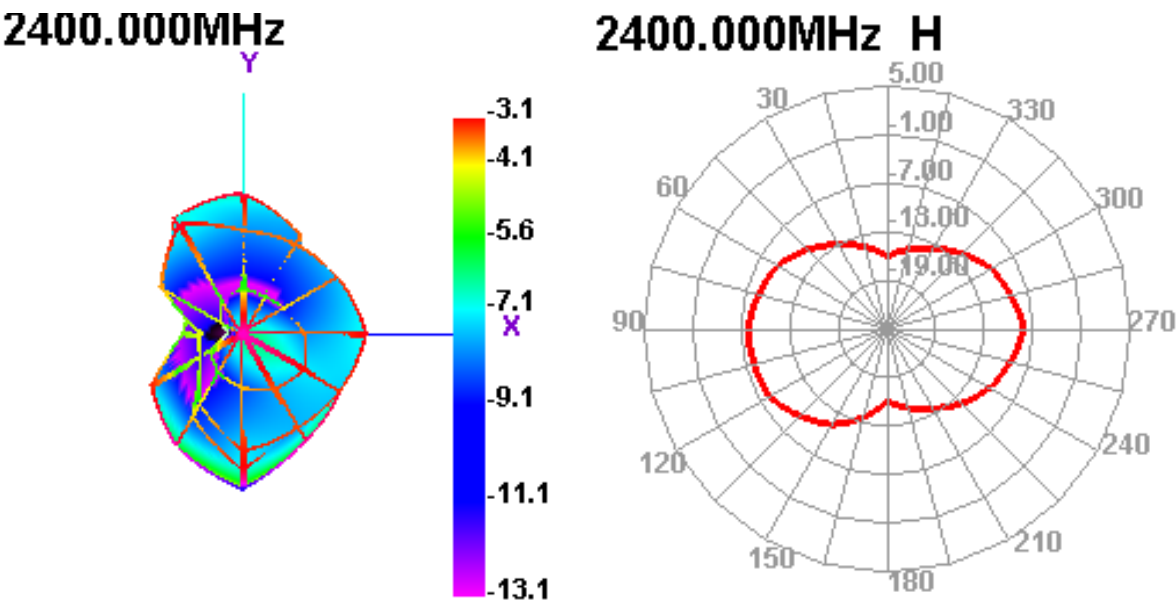
Equipment	Manufacturer	Model No	Next Cal
Radio Communication Analyzer	Anritsu	8820c	July. 26,23
Network analyzer	Agilent	E5071B	July. 26,23

4. TEST RESULTS

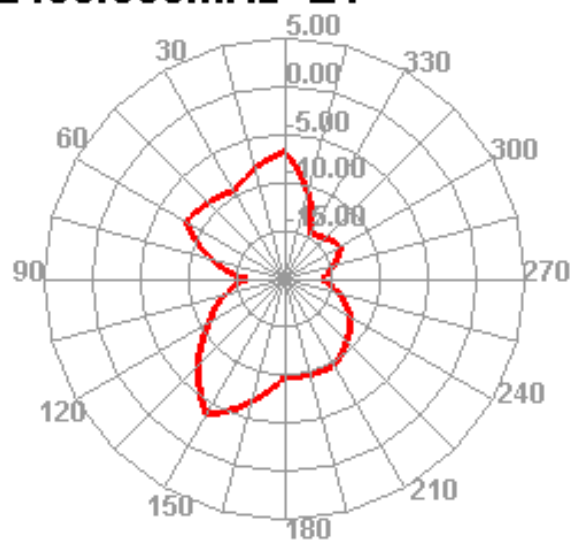
ANTENNA	Freq	Effi (dB)	GAIN(dBi)
PCB	2400	0.98	-1.17
	2420	-0.58	-2.56
	2440	-2.06	-4.21
	2460	-2.86	-5.01
	2480	-3.11	-5.26
	2500	-4.26	-6.41



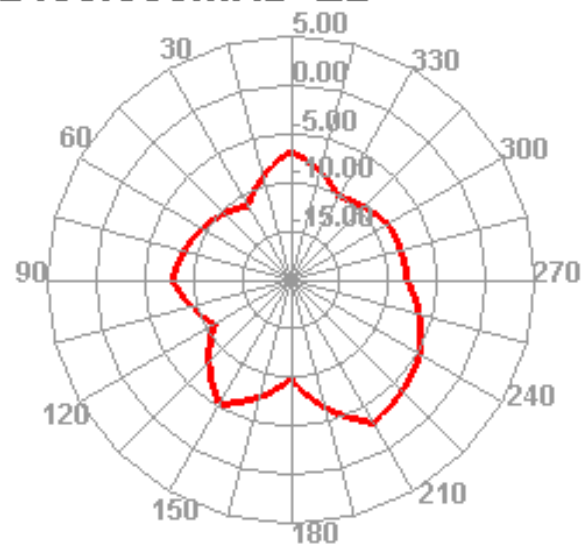
5. Different radiation patterns are related to the positioning of the antenna



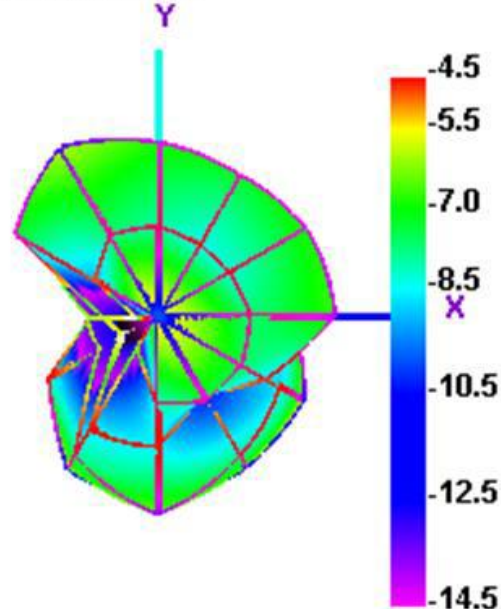
2400.000MHz E1



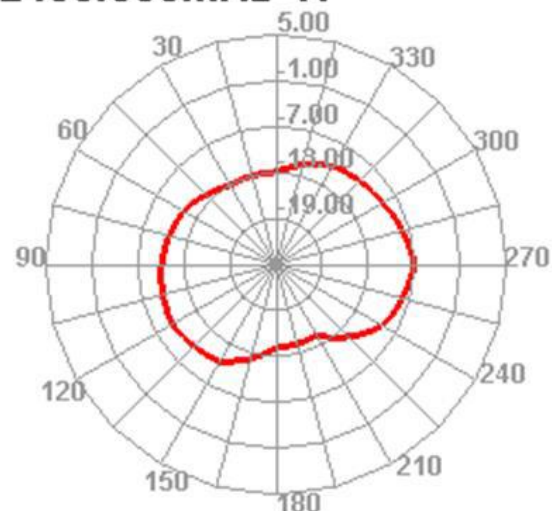
2400.000MHz E2



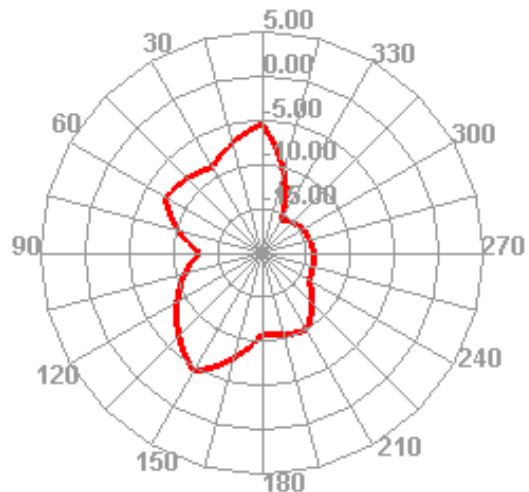
2450.000MHz



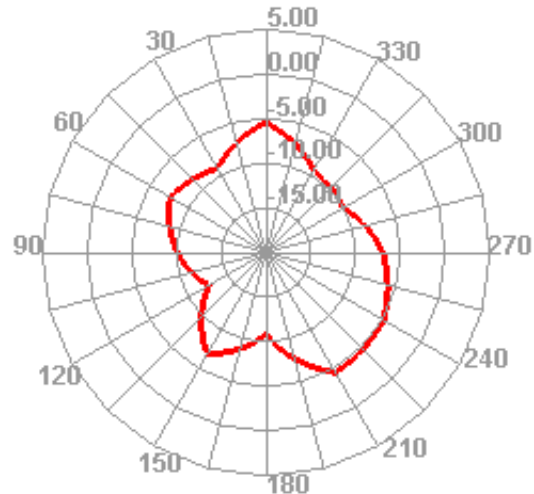
2450.000MHz H



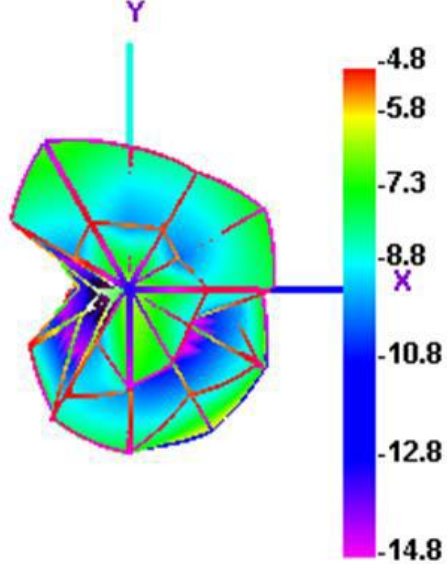
2450.000MHz E1



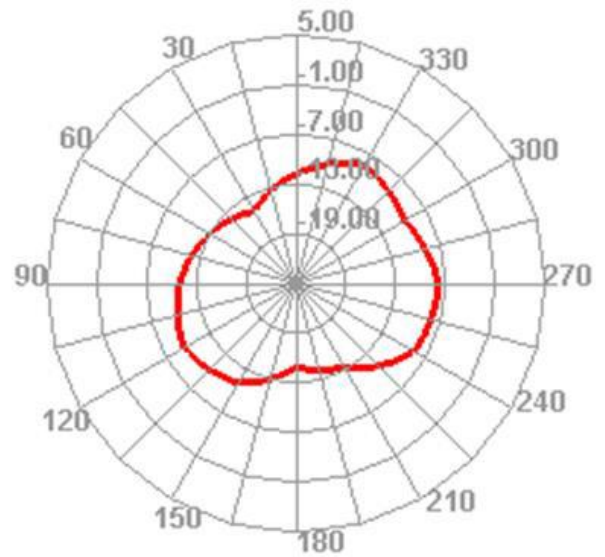
2450.000MHz E2



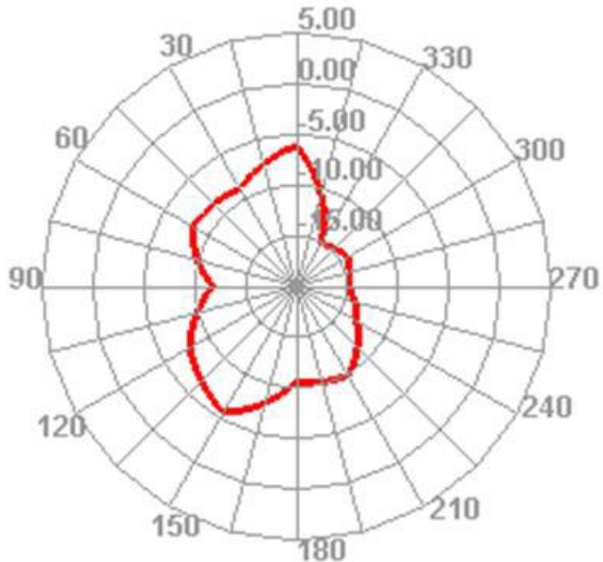
2500.000MHz



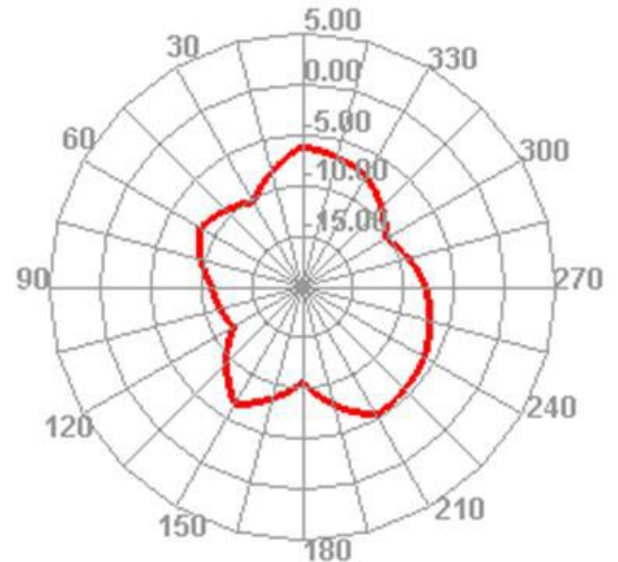
2500.000MHz H



2500.000MHz E1



2500.000MHz E2



6. PHOTOGRAPHS OF THE CONFIGURATION

