

X ROCKER

LED CONTROLLER TYPES FURNITURE CONTROLLER



	Light return key	Touch this key to return to the previous light color
	Power button	Long Press to tum on/off the lights. Short Press: 1. Single Colour Modes 2. Dynamic RGB Modes 3. Sound Reactive control modes
	Light forward button	Touch this button to select the ne t colour/light in sequence

Attention

Please note that a separate USB 2.0 5V/2A power supply is needed to power the desk for operation. Ensure that the maximum voltage output of your chosen power source does not exceed 5V. Exercise caution when plugging the cable into your gaming desk to avoid damaging the socket and/or cable. Please be advised that the power supply is not included.

# X ROCKER

## LED CONTROLLER TYPES FURNITURE CONTROLLER

### DOWNLOADING THE APP/ GETTING STARTED

1. Download the "LED SMART" APP with your mobile phones by scanning the QR code on user manual or search the "LED SMART" APP in iPhone APP store or Google play store.
2. After the APP is downloaded, please ensure that Bluetooth and Location settings are switched on for LED Smart.
3. Power on your Neo Motion™ Sync product.
4. Open the LED Smart App, The Neo Motion (Sync) App should automatically be discovered and ready to use.



App Store Icon



X Rocker products in app

### Unable to Connect Troubleshooting

1. Please ensure that power is correctly being provided to the Neo Motion™ Sync product
2. Check that location settings and Bluetooth is switched on.
3. If other devices have been used with Neo Motion Sync, the app on that device needs to be closed before another can control the LED.
4. If devices do not show in the pairing screen, please refresh the screen by pressing the refresh button.
5. If paired but no light showing - press the power button in the app to switch the lights on.
6. Please ensure App is up to date by checking Google Play or Apple iOS stores

### INSTRUCTIONS

1. Allow Location settings if not done so already
2. Allow the App to connect to nearby devices
3. On the main screen - press the refresh icon to search for nearby Neo Motion™ Sync devices
4. To control a single device - select the Devices menu and click the icon for the device you want to control
5. To control a group of devices - select 'groups' from the top of the screen
6. On the left side of the screen, click on all devices you want to control together, then select 'Add Device'
7. Rename the group of devices and click 'Confirm'
8. Click on the group name to enter control for all

### ADDING CUSTOM COLOURS/PATTERNS

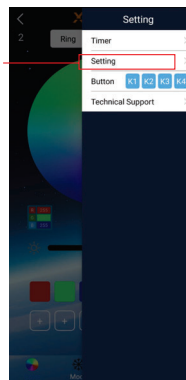
Short press on the [+] boxes and select a colour or pattern to add.

To remove the colour or pattern, long press on the button to delete the selection.



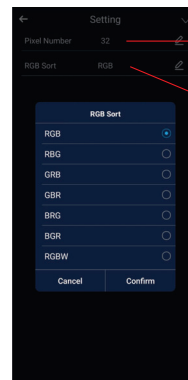
**Setting:** You can set RGB sorting, timing, shake, and change skin.

Set RGB sort



Adjust pixels

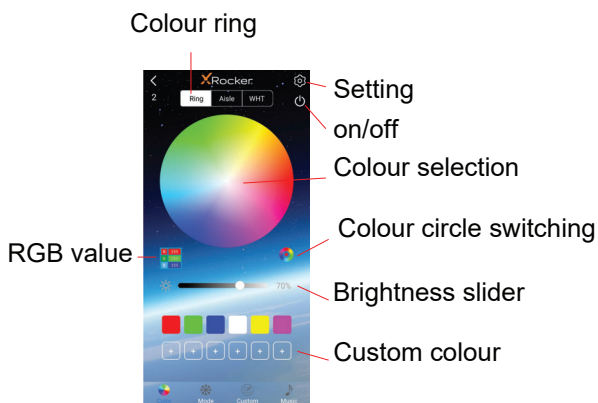
Adjust RGB order



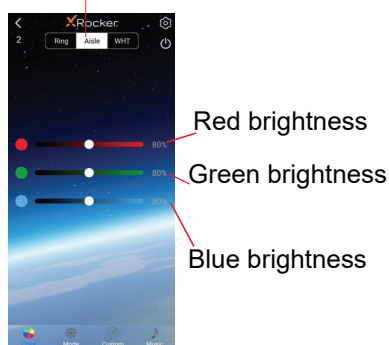
# X ROCKER

## LED CONTROLLER TYPES FURNITURE CONTROLLER

**Colour interface:** This interface has controls single colour. 'Ring' uses a colour ring for control, 'Aisle' lets you set RGB values and 'WHT' controls White LED and brightness.

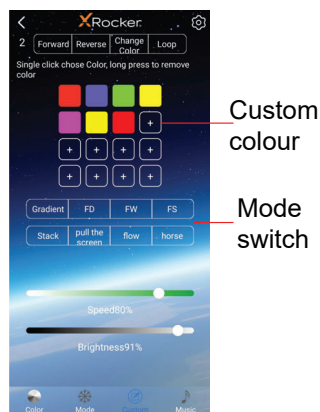
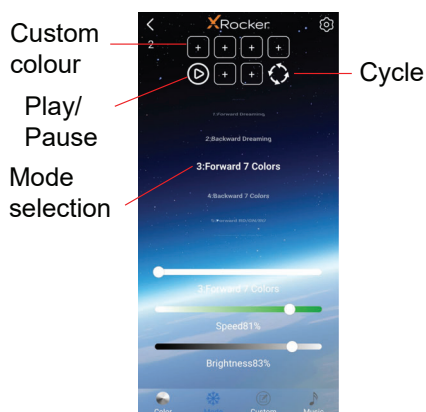


Aisle

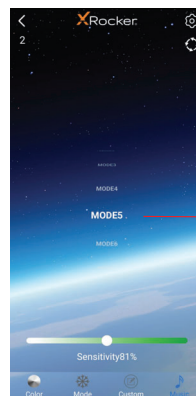


**Mode interface:** Use this to choose from over 200 pattern modes. adjust the speed and brightness and store your favourite

**Custom interface:** Select your favourite colours in sequence and animate your own custom pattern.

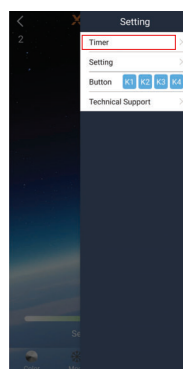


**Music Mode:** The voice control interface has hundreds of voice control modes to choose from. These react to sounds that happen near the Control bo .



### (Settings)-Timer Mode:

1. Press [+] To create a new timer.
2. Set the function to either turn on/ turn off or a pattern
3. Set the date you would like the instruction to run
4. Once set, click 'Send', the device will flash twice to confirm to send the instruction to the Neo Motion™ Sync devices. NB. If you set a turn off function without a turn on then please ensure you turn the lights back on using the app.



## FCC RADIATION EXPOSURE STATEMENT/IC RADIATION EXPOSURE STATEMENT

**Caution:** The user is cautioned that changes or modifications not expressly approved by the party responsible for compliance could void the user's authority to operate the equipment. **FCC NOTE:** This equipment has been tested and found to comply with the limits for a Class B digital device, pursuant to Part 15 of the FCC Rules. These limits are designed to provide reasonable protection against harmful interference in a residential installation. This equipment generates, uses and can radiate radio



frequency energy and, if not installed and used in accordance with the instructions, may cause harmful interference to radio communications. However, there is no guarantee that interference will not occur in a particular installation. If this equipment does cause harmful interference to radio or television reception, which can be determined by turning the equipment off and on, the user is encouraged to try to correct the interference by one or more of the following measures:

- Reorient or relocate the receiving antenna.
- Increase the separation between the equipment and receiver.
- Connect the equipment into an outlet on a circuit different from that to which the receiver is connected.
- Consult the dealer or an experienced radio/TV technician for help.

### FCC Radiation Exposure Statement:

This equipment complies with FCC radiation exposure limits set forth for an uncontrolled environment.

This transmitter must not be co-located or operating in conjunction with any other antenna or transmitter.

**Attention :** L'utilisateur est averti que les changements ou modifications non expressément approuvés par la partie responsable de la conformité pourraient annuler l'autorité de l'utilisateur à utiliser l'équipement. **FCC NOTER:** Cet équipement a été testé et déclaré conforme aux limites d'un appareil numérique de classe B, conformément à la partie 15 des règles de la FCC. Ces limites sont conçues pour fournir une protection raisonnable contre les interférences nuisibles dans une installation résidentielle. Cet équipement génère, utilise et peut émettre de l'énergie de fréquence radio et, s'il n'est pas installé et utilisé conformément aux instructions, peut causer des interférences nuisibles aux communications radio. Cependant, il n'y a aucune garantie que des interférences ne se produiront pas dans une installation particulière. Si cet équipement cause des interférences nuisibles à la réception de la radio ou de la télévision, ce qui peut être déterminé en éteignant et en rallumant l'équipement, l'utilisateur est encouragé à essayer de corriger l'interférence par une ou plusieurs des mesures suivantes:

- Réorienter ou déplacer l'antenne de réception.
- Augmenter la distance entre l'équipement et le récepteur.
- Connectez l'équipement à une prise sur un circuit différent de celui auquel le récepteur est connecté.
- Consultez le revendeur ou un technicien radio/TV expérimenté pour obtenir de l'aide.

### Déclaration de la FCC sur l'exposition aux rayonnements:

Cet équipement est conforme aux limites d'exposition aux rayonnements de la FCC établies pour un environnement non contrôlé.

Cet émetteur ne doit pas être co-localisé ou fonctionner en conjonction avec une autre antenne ou un autre émetteur.

**Precaución:** Se advierte al usuario que los cambios o modificaciones no aprobados expresamente por la parte responsable del cumplimiento podrían anular la autoridad del usuario para operar el equipo. **FCC NOTA:** Este equipo ha sido probado y se encontró que cumple con los límites para un dispositivo digital de Clase B, de conformidad con la Parte 15 de las Reglas de la FCC. Estos límites están diseñados para brindar una protección razonable contra interferencias dañinas en una instalación residencial. Este equipo genera, usa y puede irradiar energía de radiofrecuencia y, si no se instala y usa de acuerdo con las instrucciones, puede causar interferencias dañinas en las comunicaciones por radio. Sin embargo, no hay garantía de que no se produzcan interferencias en una instalación en particular. Si este equipo causa interferencias dañinas en la recepción de radio o televisión, lo que se puede determinar apagando y encendiendo el equipo, se recomienda al usuario que intente corregir la interferencia mediante una o más de las siguientes medidas:

- Reorientar o reubicar la antena receptora.
- Aumente la separación entre el equipo y el receptor.
- Conectar el equipo a una toma de un circuito diferente al que está conectado el receptor.
- Consulte al distribuidor o a un técnico de radio/TV experimentado para obtener ayuda.

### Declaración de exposición a la radiación de la FCC:

Este equipo cumple con los límites de exposición a la radiación de la FCC establecidos para un entorno no controlado.

Este transmisor no debe ubicarse ni operarse junto con ninguna otra antena o transmisor.