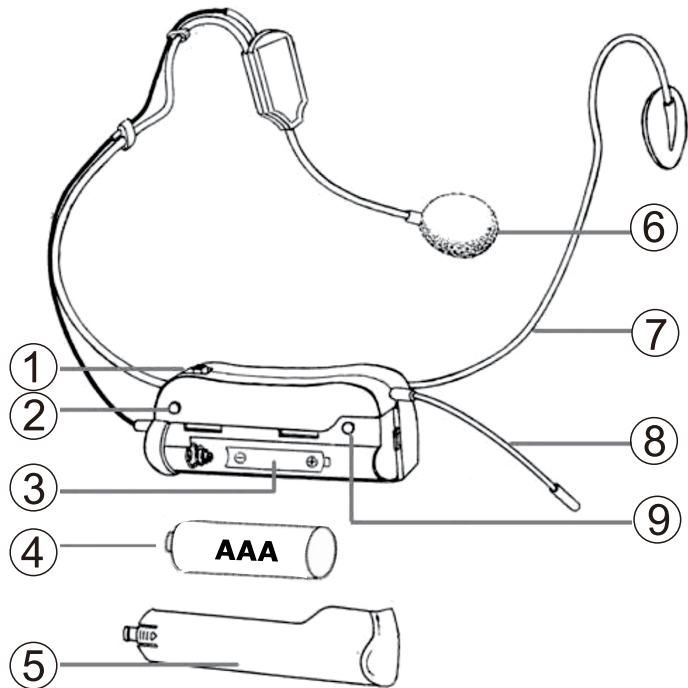


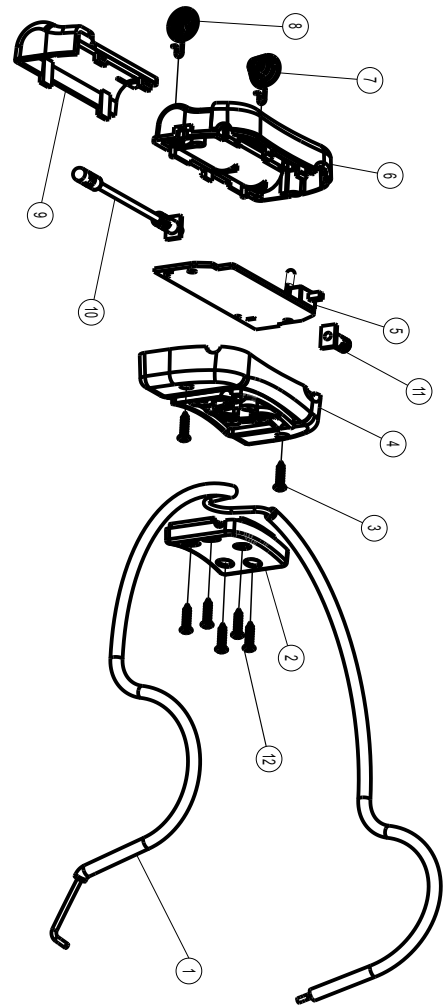
HD-1 SYSTEM USER CONTROLS/CONNECTIONS GUIDE

HD-1 Head-Worn Transmitter

1. **POWER SWITCH** Slide in arrow direction to power transmitter On
2. **POWER & LOW BATTERY LED** Flashes once at power up, continuous flashing indicates battery needs replacement
3. **BATTERY COMPARTMENT** Insert one AAA battery, observing correct polarity
4. **BATTERY** Single AAA alkaline or NiMH battery required for operation
5. **BATTERY COMPARTMENT COVER** To cover AAA battery, slide to open
6. **INPUT MIC** Unidirectional pickup for vocals
7. **FLEXIBLE HEADBAND** For mounting over the ears
8. **ANTENNA** Permanently attached flexible antenna
9. **IR RECEPTOR SENSOR/WINDOW** Infrared LED sensor for linking the TX to the RX during IR frequency download



No	Name	Specification	material	Qty	Remark
1	wire			1	
2	Linking piece		ABS	1	
3	screw1	PA2X10		2	
4	Cover under		ABS	1	
5	PCB 1			1	
6	cover		ABS	1	
7	negative spring			1	FO00028
8	positive spring			1	FO00028
9	Battery cover		ABS	1	
10	antenna			1	2.1X77
11	Connections to the microphone			1	
12	screw2	PA2X6		5	



FCC STATEMENT

1. This device complies with Part 15 of the FCC Rules. Operation is subject to the following two conditions:

(1) This device may not cause harmful interference.

(2) This device must accept any interference received, including interference that may cause undesired operation.

2. Changes or modifications not expressly approved by the party responsible for compliance could void the user's authority to operate the equipment.

NOTE: This equipment has been tested and found to comply with the limits for a Class B digital device, pursuant to Part 15 of the FCC Rules. These limits are designed to provide reasonable protection against harmful interference in a residential installation.

This equipment generates uses and can radiate radio frequency energy and, if not installed and used in accordance with the instructions, may cause harmful interference to radio communications. However, there is no guarantee that interference will not occur in a particular installation. If this equipment does cause harmful interference to radio or television reception, which can be determined by turning the equipment off and on, the user is encouraged to try to correct the interference by one or more of the following measures:

- Reorient or relocate the receiving antenna.

- Increase the separation between the equipment and receiver.

- Connect the equipment into an outlet on a circuit different from that to which the receiver is connected.

- Consult the dealer or an experienced radio/TV technician for help.

RF warning statement:

The device has been evaluated to meet general RF exposure requirement. The device can be used in portable exposure condition without restriction.