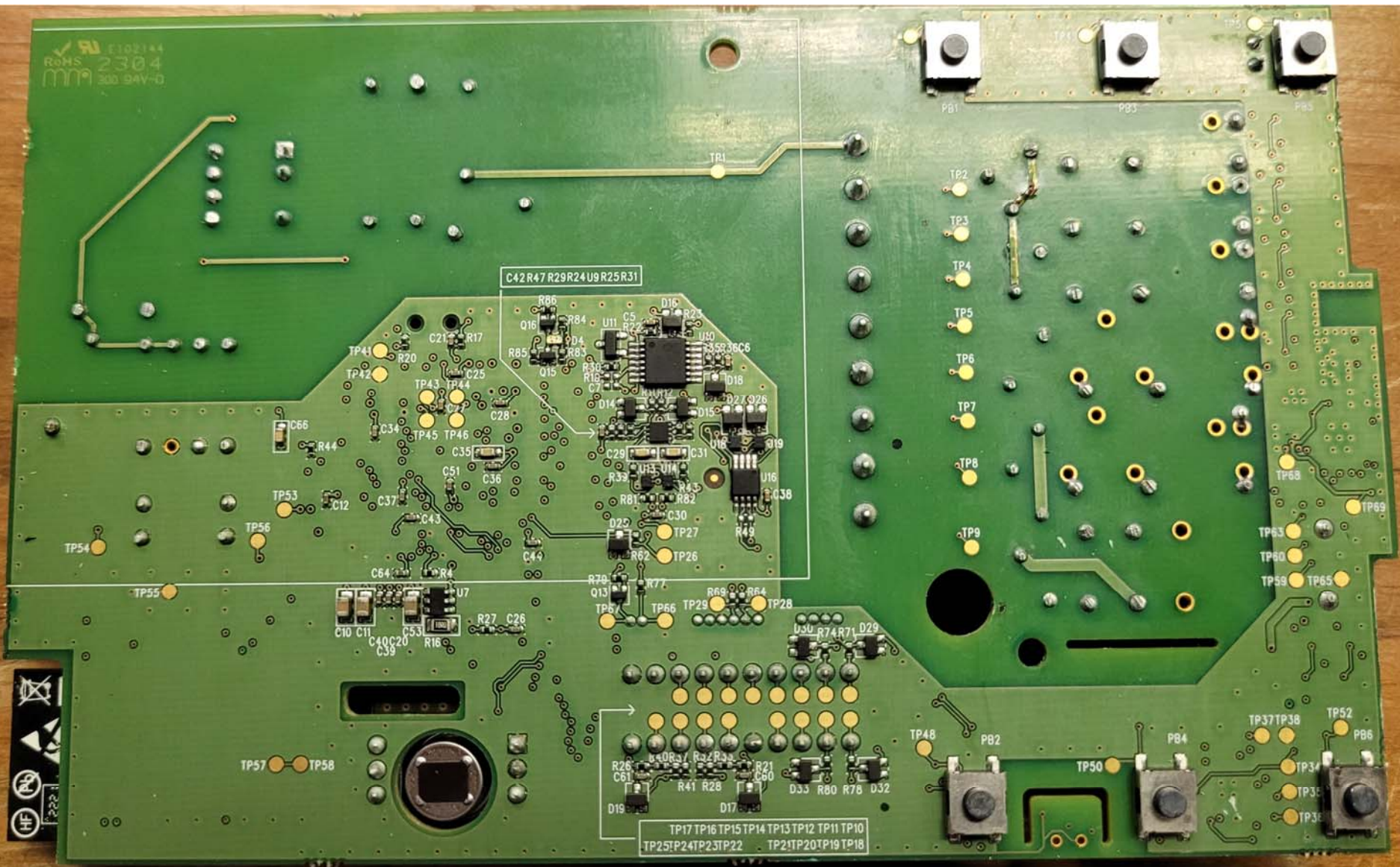


Inside View #1 - With Display

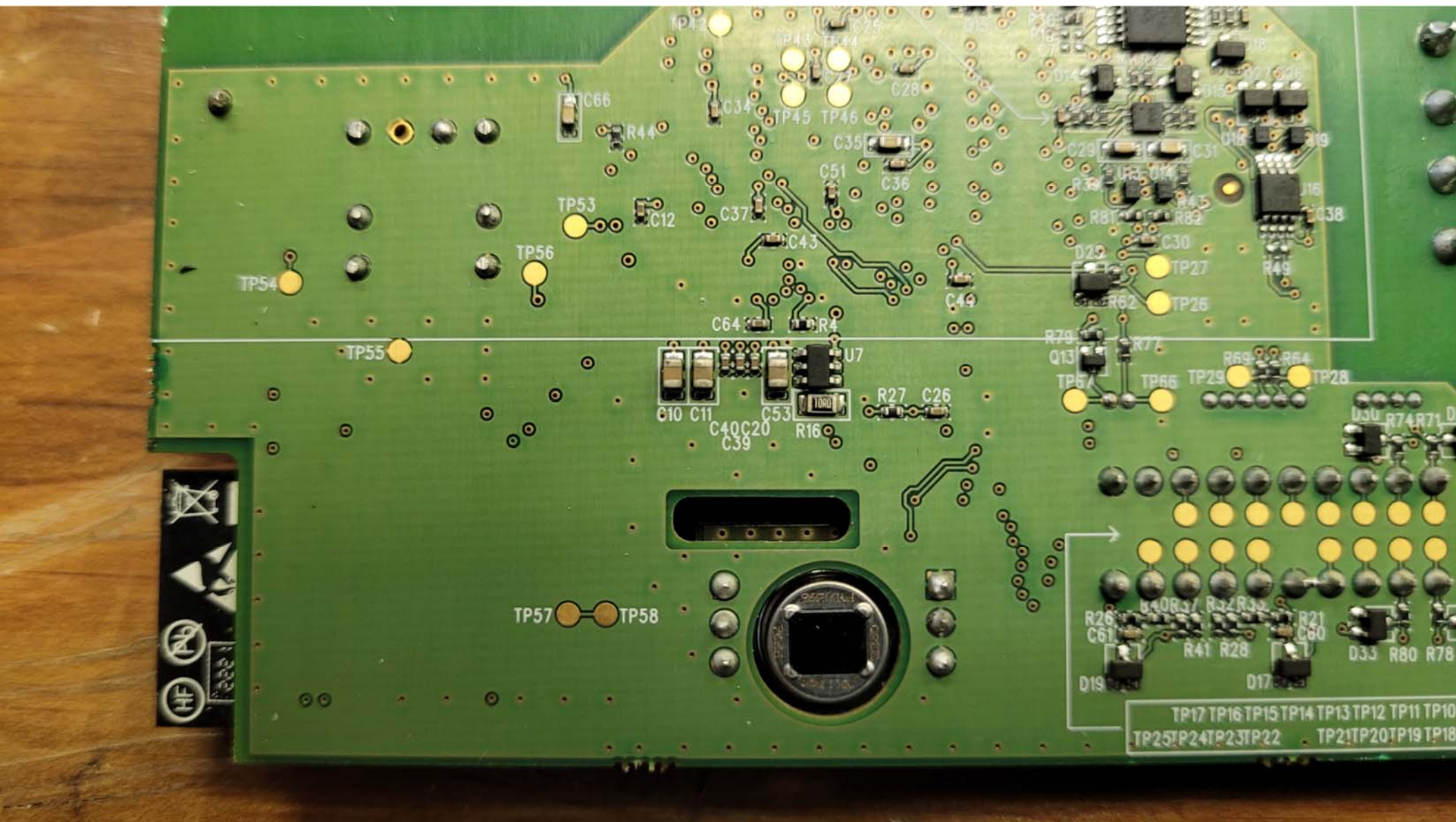




Inside View #3 - With Display



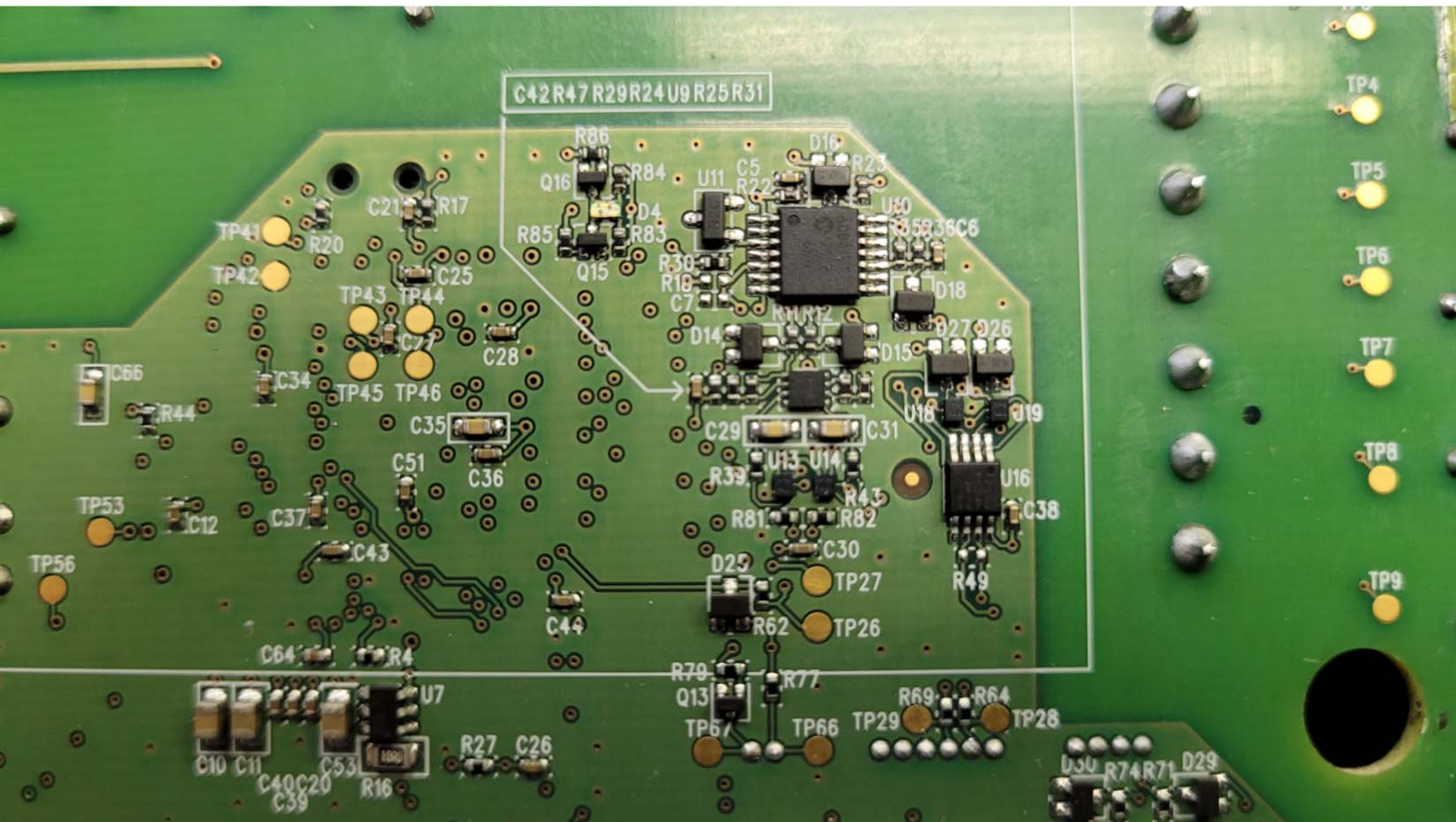
With Display - Bottom View of the PCB



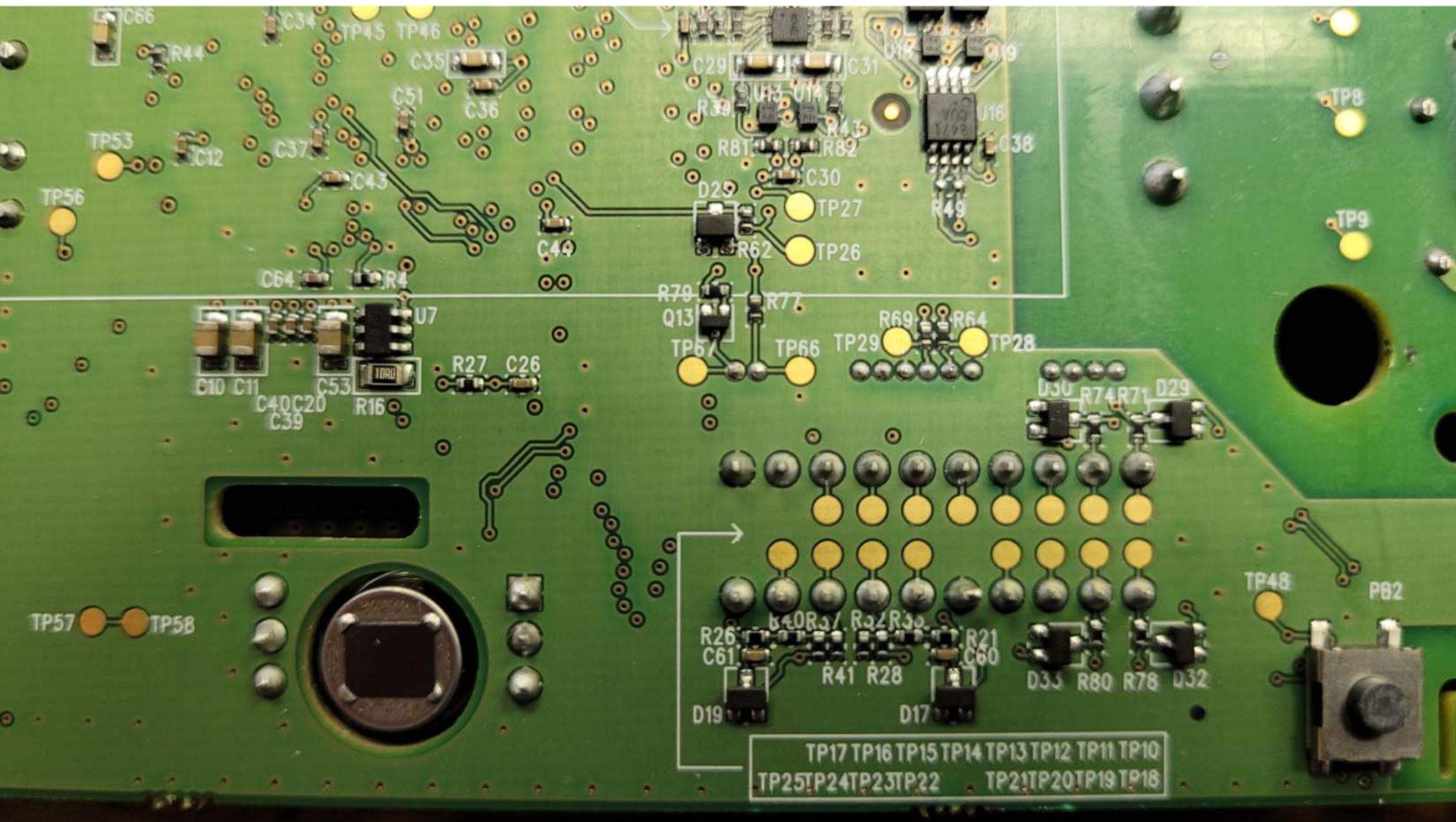
With Display - Bottom View of the PCB - Closeup #1



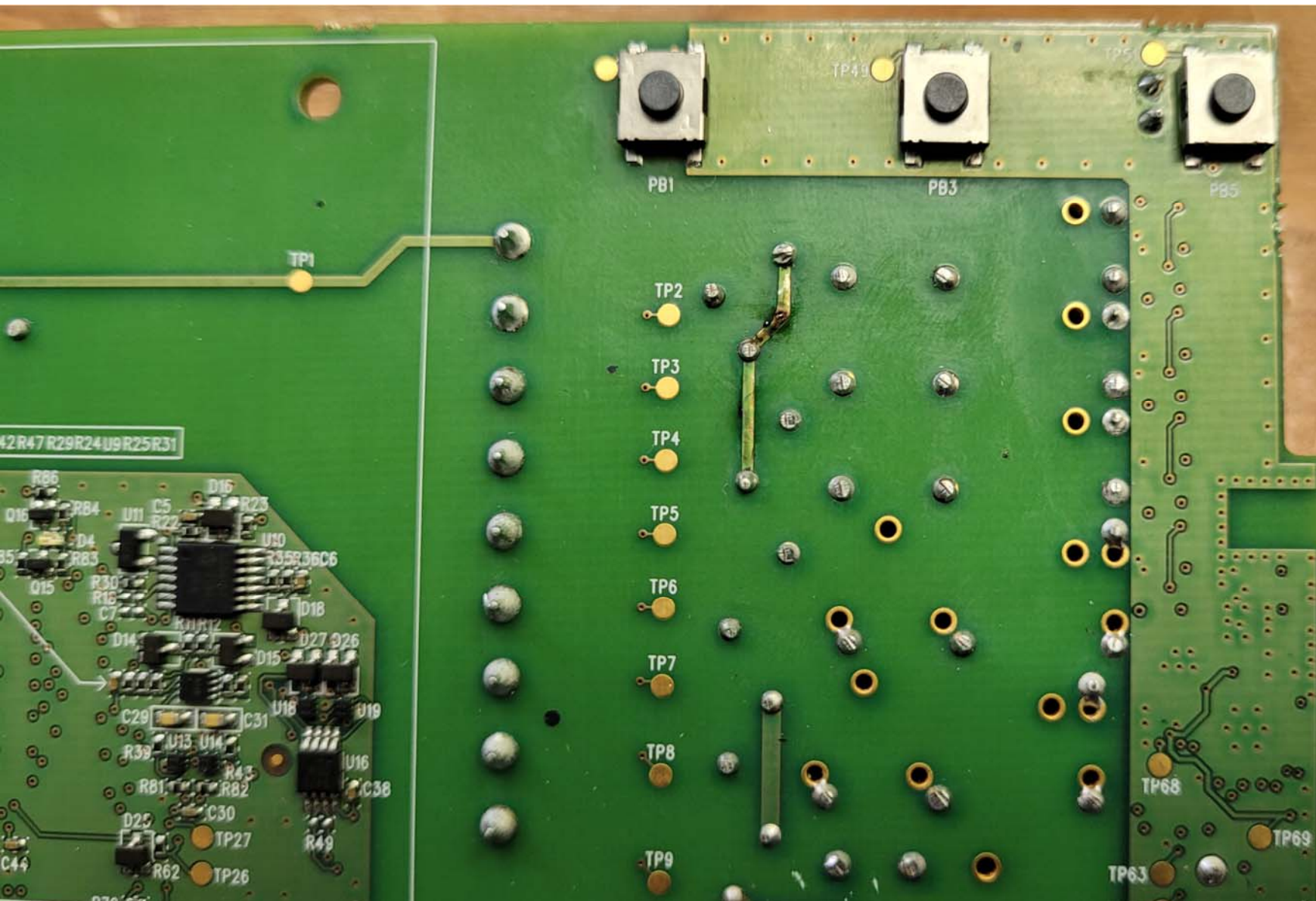
### With Display - Bottom View of the PCB - Closeup #2



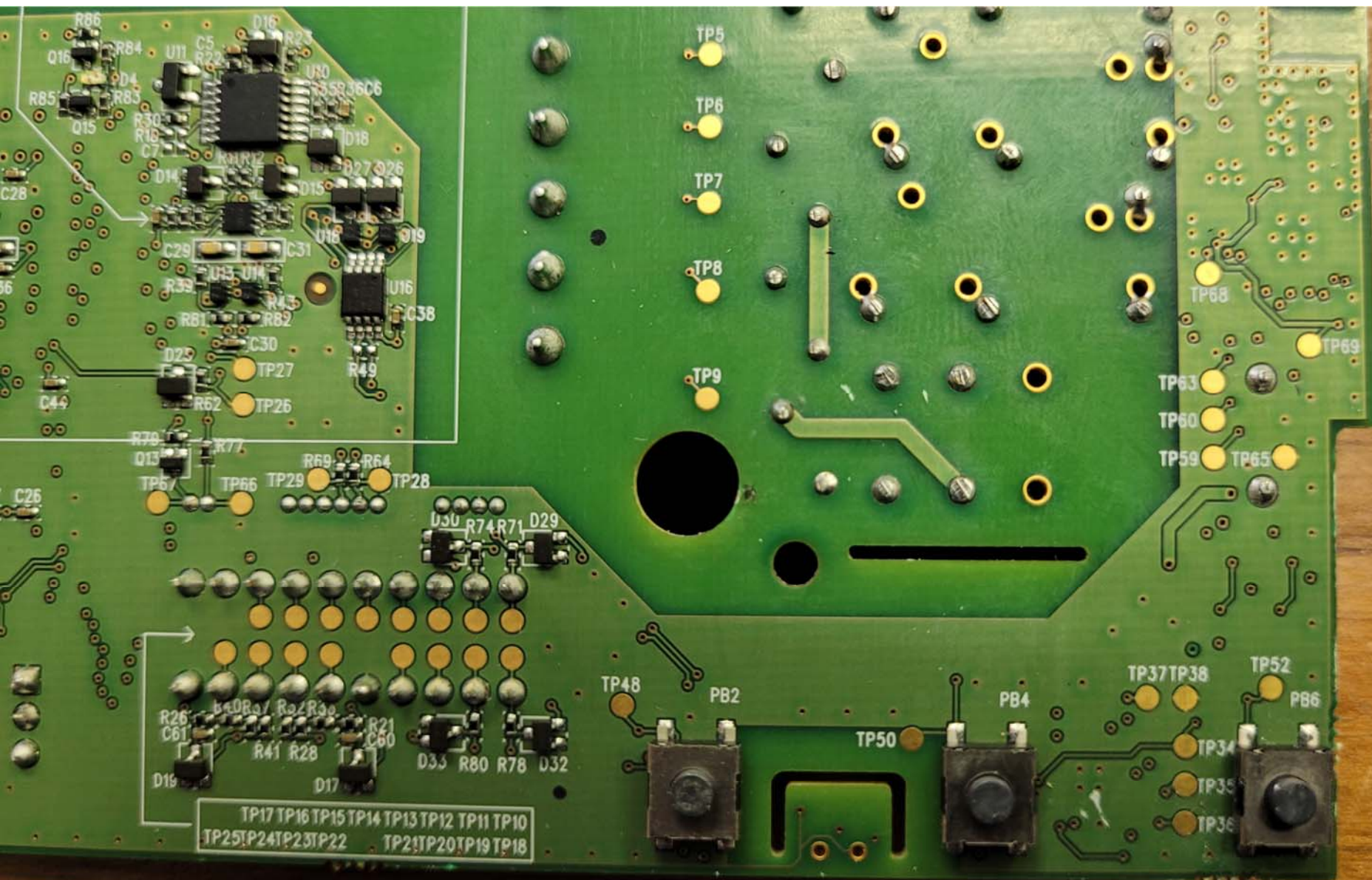
With Display - Bottom View of the PCB - Closeup #3



With Display - Bottom View of the PCB - Closeup #4



With Display - Bottom View of the PCB - Closeup #5



With Display - Bottom View of the PCB - Closeup #6